

PROTÉGER L'ÉLÉGANCE

Adela Iordache Platis

[click here for video](#)



PROTÉGER L'ÉLÉGANCE

About 50% of the motorcycle riders choose not to wear protective gear because of a style choice. My project intends to create protective garments that allow riders to keep their style.

[video presentation](#)

#vintage motorcycle jackets
#elegant on a bike
#protection
#leather motorcycle sleeves



PROTÉGER L'ÉLÉGANCE A/W23





White leather motorcycle jacket with red and black accents. 1970s.



Front view of a dark brown leather motorcycle jacket. 1970s.



Advertisement for Bell Helmets. 1970s.



Leather togs
Leather togs, or leather togs, were a common type of clothing for motorcycle riders in the 1970s and 1980s. They were made of the highest quality leather and were designed to provide protection and durability. They were also known for their style and were often worn by motorcycle enthusiasts.

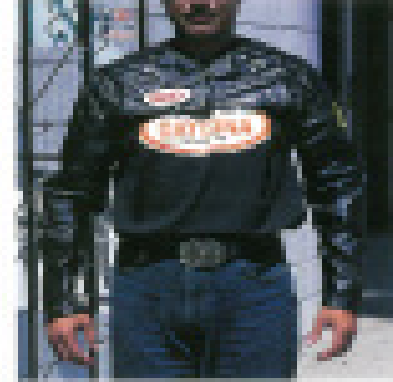
Front view of a dark leather motorcycle jacket. 1970s.



Leather togs, or leather togs, were a common type of clothing for motorcycle riders in the 1970s and 1980s. They were made of the highest quality leather and were designed to provide protection and durability. They were also known for their style and were often worn by motorcycle enthusiasts.



Front view of a dark leather motorcycle jacket. 1970s.



LEATHER SUITS

Leather suits were a popular choice for motorcycle riders in the 1970s and 1980s. They were made of the highest quality leather and were designed to provide protection and durability. They were also known for their style and were often worn by motorcycle enthusiasts.

Advertisement for leather suits. 1970s.

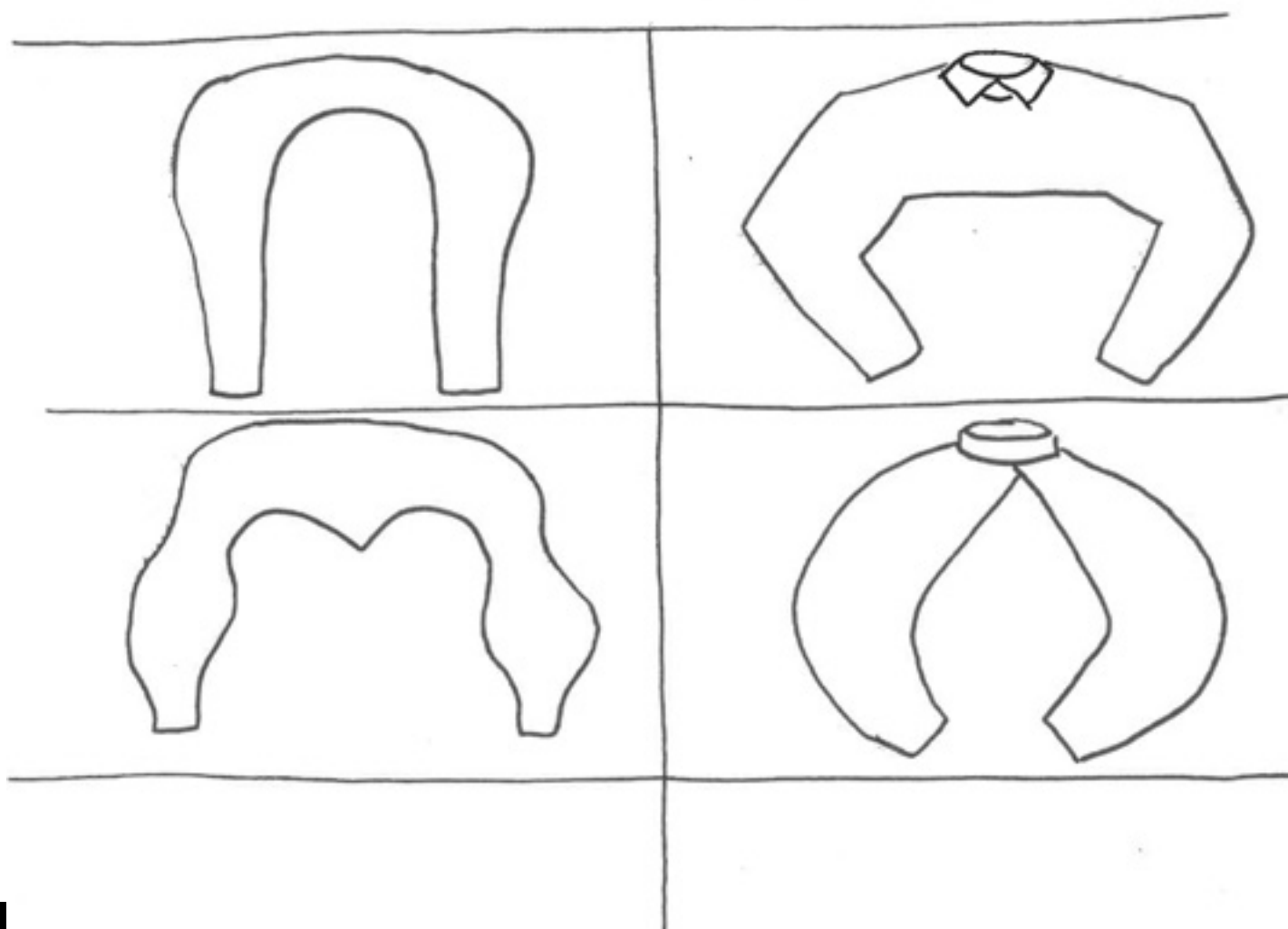
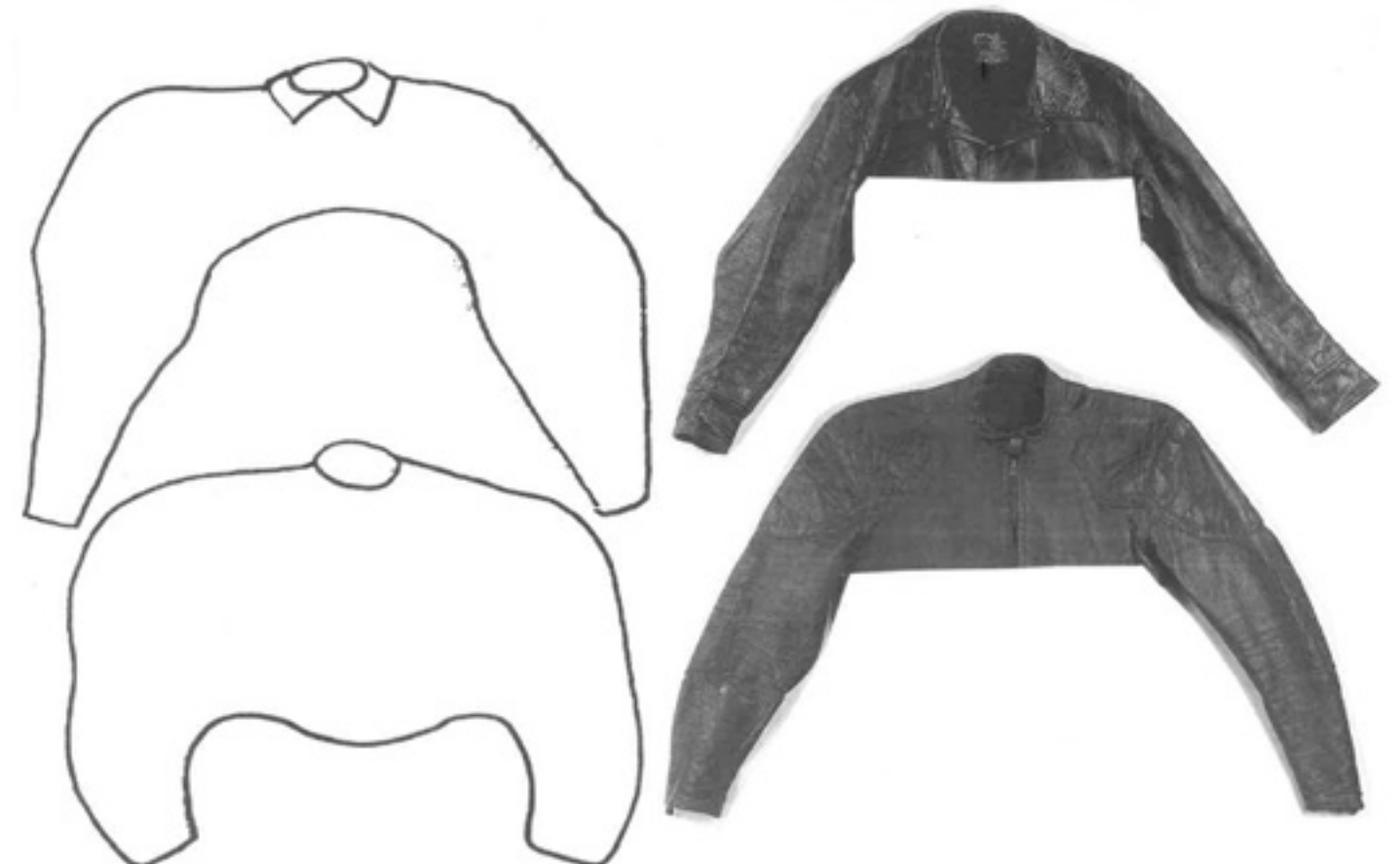
Advertisement for leather suits. 1970s.



Leather Sleeves Shapes



Leather sleeves, maker unknown, cowhide, mid-1960s-70s. Cooperation of Yoshi Kasaka of Garage Company. \$100-200



TROJAN LEATHER SPORTSWEAR
FACTORY TO YOU SINCE 1922

The TROJAN NERDY BEAR



Size 34 to 44, longer sleeve at slight additional cost. When ordering give height and weight. Suitable Ladies' trade under \$1.00 extra.

MSRP \$1.99
Special reduced on all orders \$25.00 and over \$2 in California. MSRP savings on prepaid orders.

Top grade front-zipper bikerstyle by OLYMPIAN 100% water fending quilted cowhide. Leather patches, built-in breast pocket, built-in leather button bands, zipper sleeves and pockets, built-in knee pads. All our leathers are individually selected—no mass-produced cowhide. Guaranteed to fit or money back. The price is factory to you—no dealer. We make 'em!

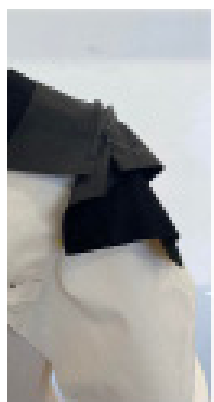
\$34.95

The TROJAN CHAMPION



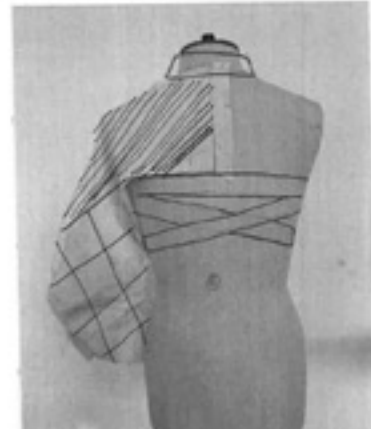
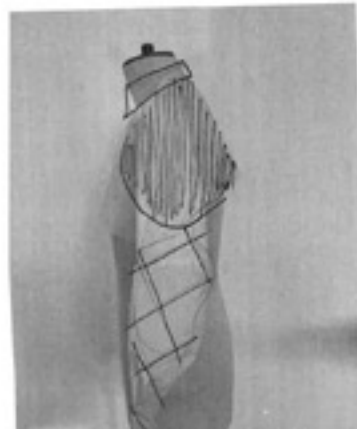
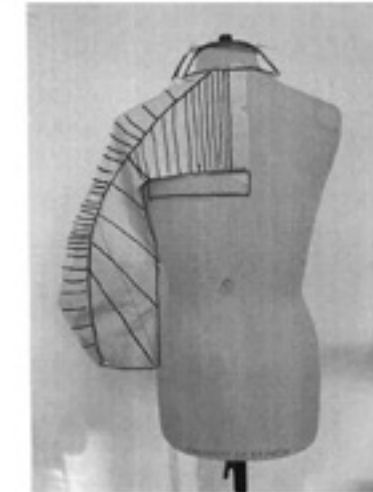
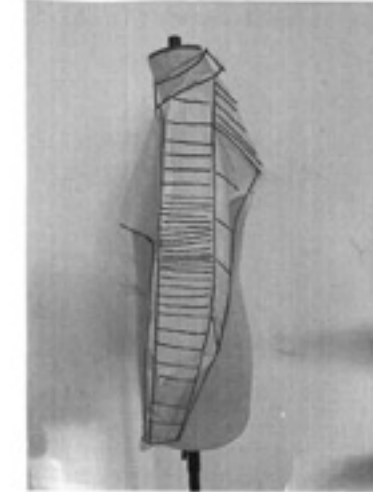
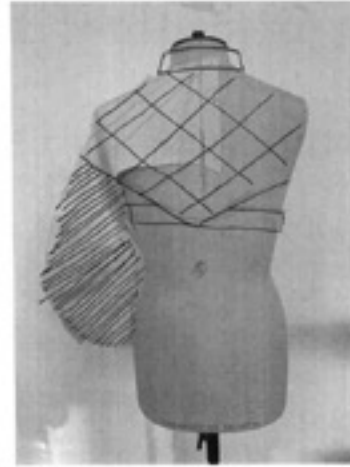
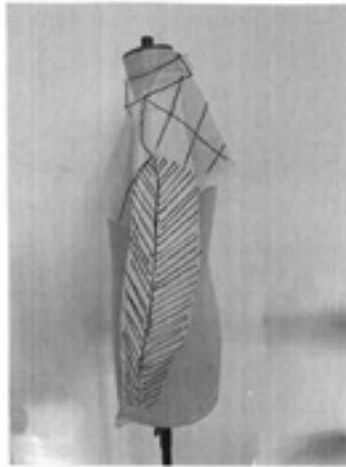
LADIES' JACKET
Top grade cowhide
\$22.95

1024 SOUTH LA BREA, INGLEWOOD, CALIFORNIA



Designs

PROTÉGER L'ÉLÉGANCE A/W23

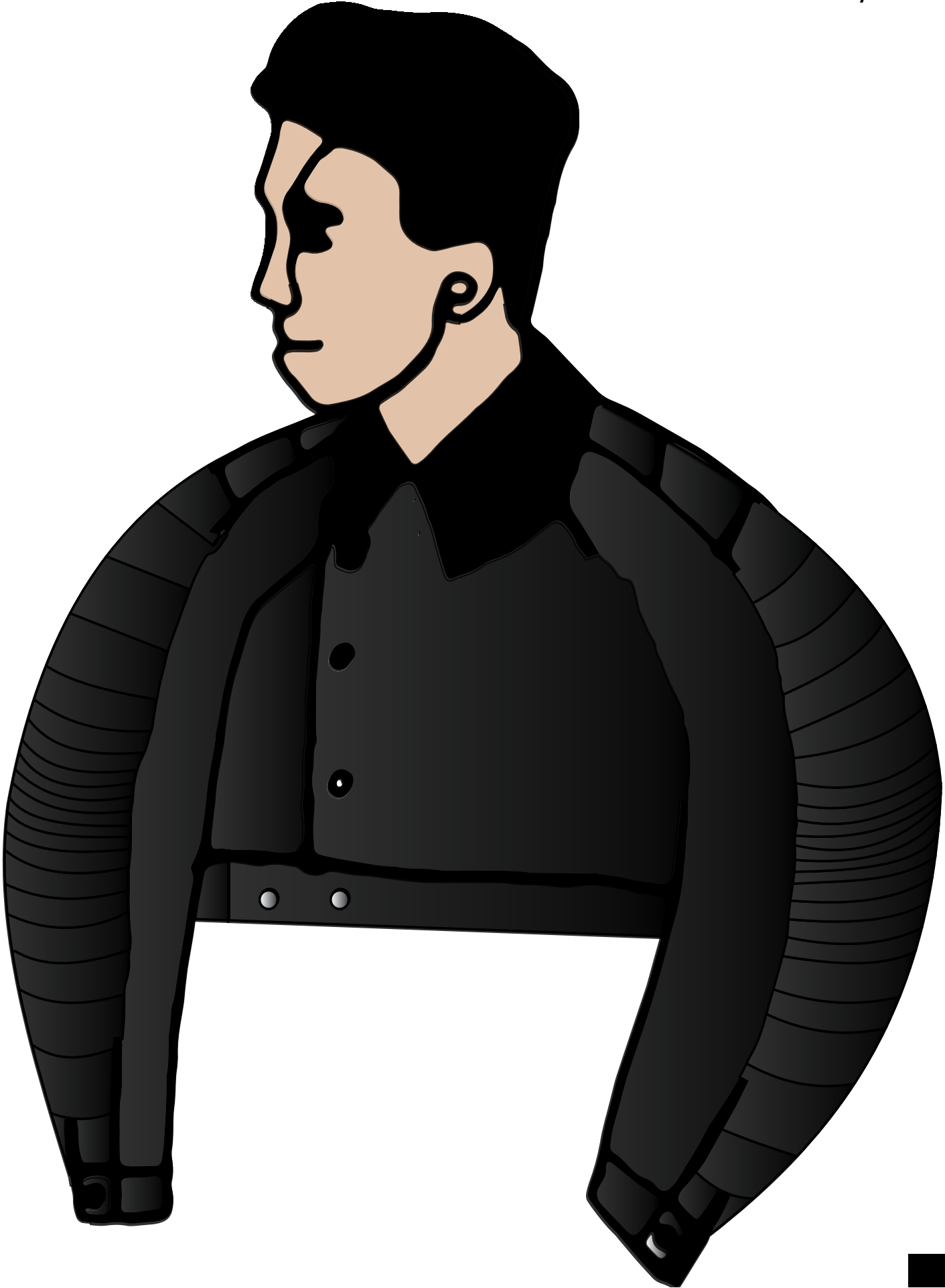


Leather Samples



Final design

PROTÉGER L'ÉLÉGANCE A/W23



PRODUCT DEVELOPMENT CONSTRUCTION

COLLECTION		STYLE			
PRIMARY FABRIC	cow hide	COLOUR	Black	SUPPLIER	J T Batchelor
SECONDARY FABRIC	Taffeta lining	COLOUR	Black	SUPPLIER	Dugdale Bros
TRIM / HARDWARE	Poppers	COLOUR	Silver	SUPPLIER	J T Batchelor
Third Fabric	cotton	COLOUR	Black	SUPPLIER	Dugdale Bros

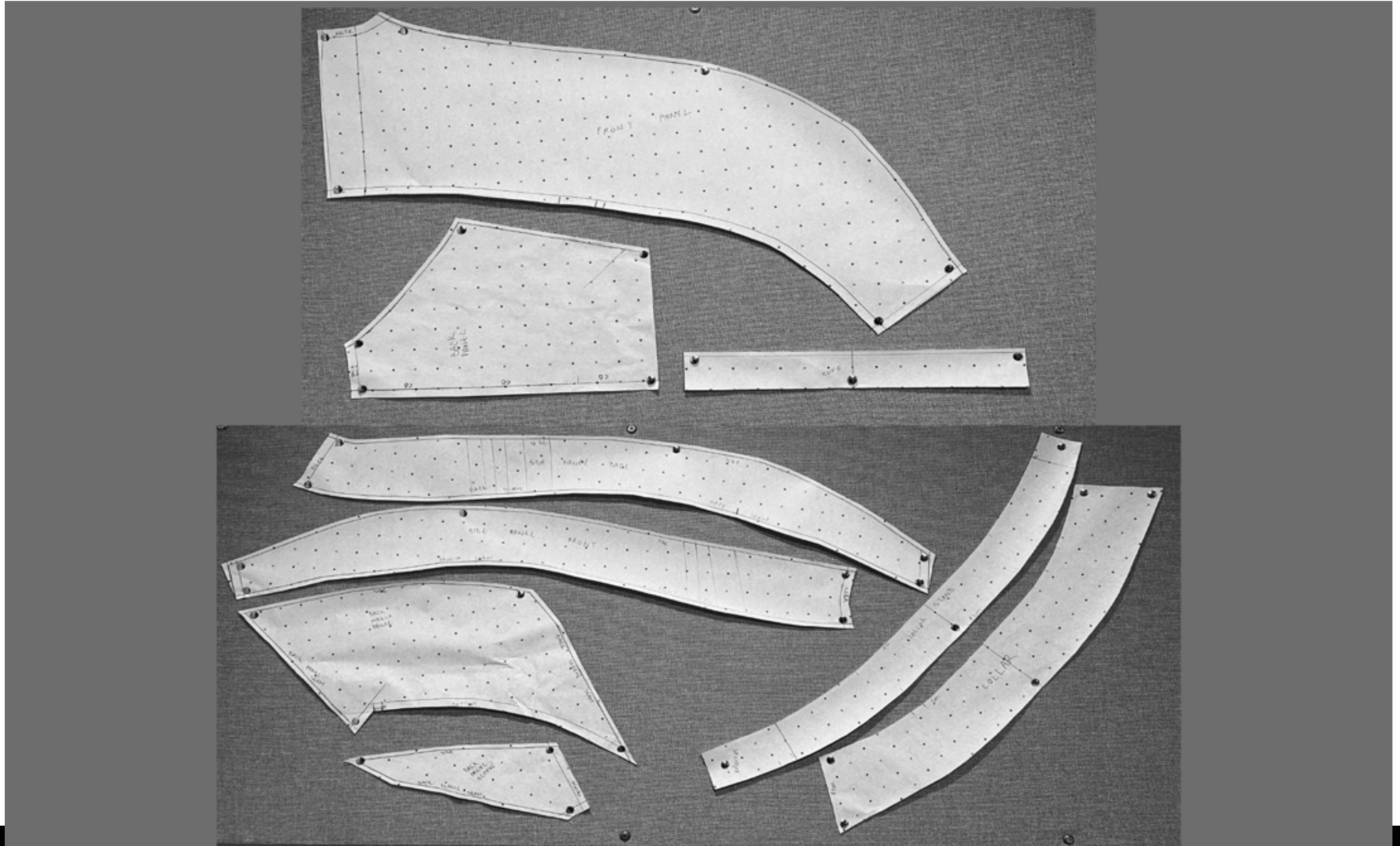
SKETCH



PRIMARY FABRIC	SECONDARY FABRIC	SEAM AND TOP-STITCHING INFORMATION	
		CONSTRUCTION SEAMS	leather cord and foam insertion in protection panels
		DARTS	no darts, shaping through panelling
		COLLAR	Shirt collar- turning the collar inside out before stitching to undercollar
		WAISTBAND	turn inside out, the same as with the cuffs, attach popper through
		CUFFS	cotton and leather
		HEM	

Layplan

PROTÉGER L'ÉLÉGANCE A/W23



Manufacture instruction

Cut patterns out x2, the protective patterns(side sleeve patterns front and back and back middle sleeve) to be cut out with 2 inch inlay
The lining to be cut when the main jacket is made up
The leather cord and foam to be inserted in the protective panels with a layer of cotton to secure the position of the cords
Sewing up the sleeve patterns the sides first to match up the stitching lines of the cords, then the rest of the sleeve
Sew the back panel to the front, then attach the sleeve to the main body
Make up the collar as a shirt collar(collar and undercollar made of leather)
Make up the cuffs and waistband with a under layer of cotton lining
Cut the sleeve and body lining with almost 2 inch inlay
Attach the cotton lining to the main body and the taffeta lining to the sleeves
Attach the collar, cuffs and the waistband, topstitch to finish
Once the sleeve jacket is made up, attach the poppers to the front, waistband and cuffs