

RE:HOME

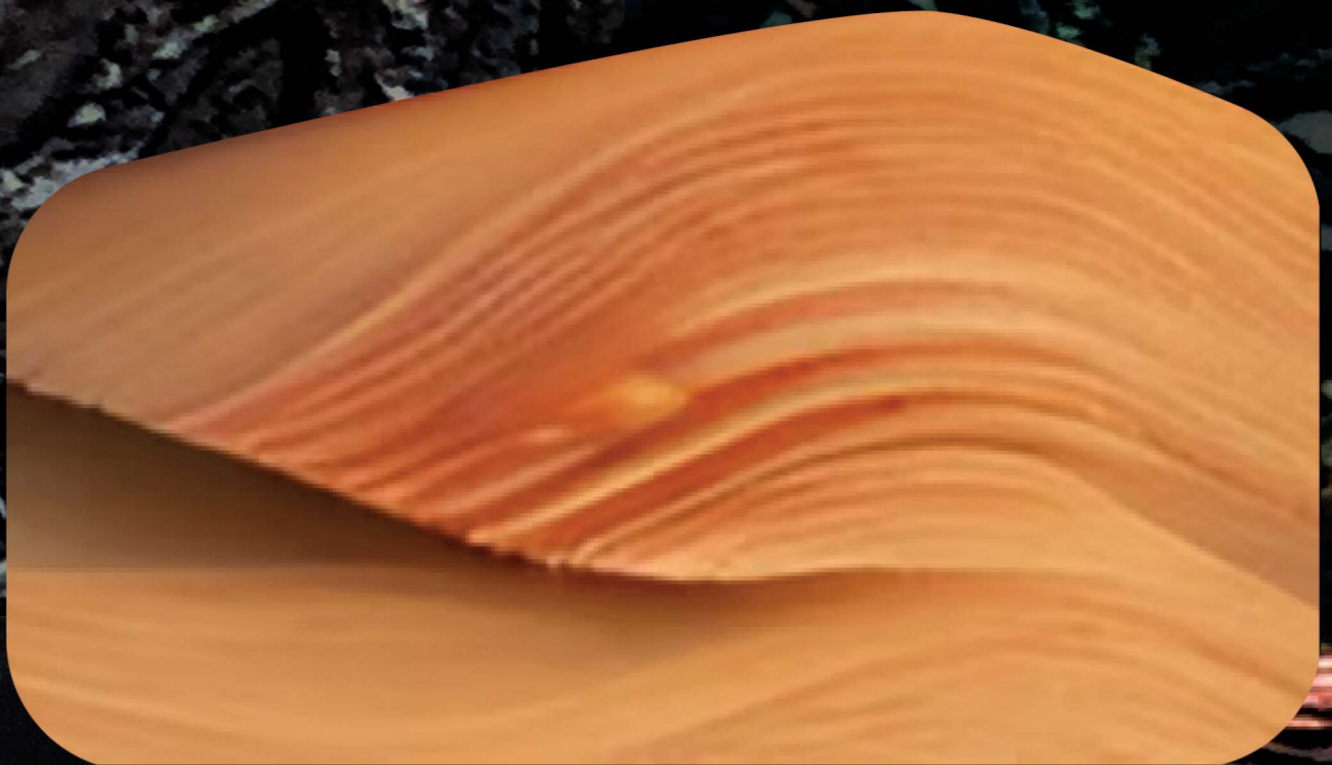
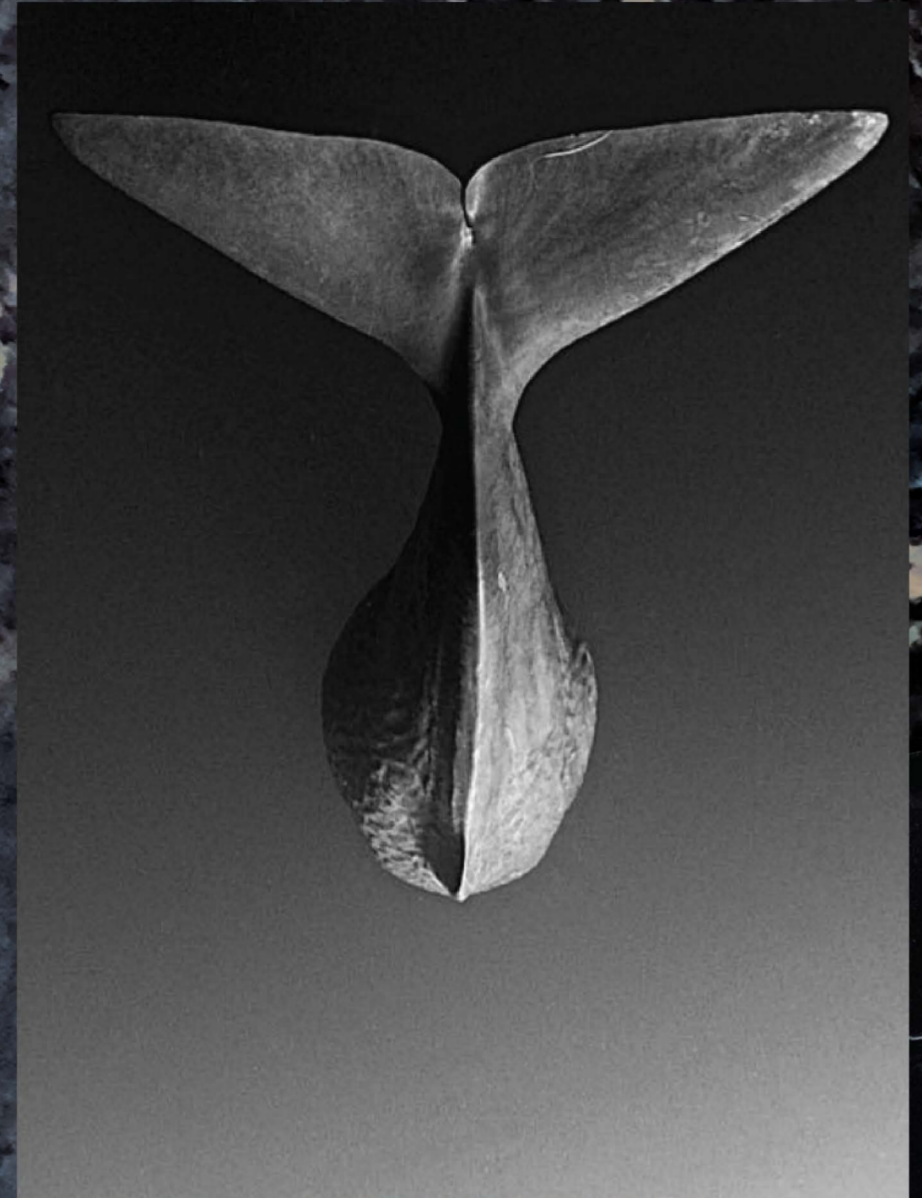
The Remnants of Identity

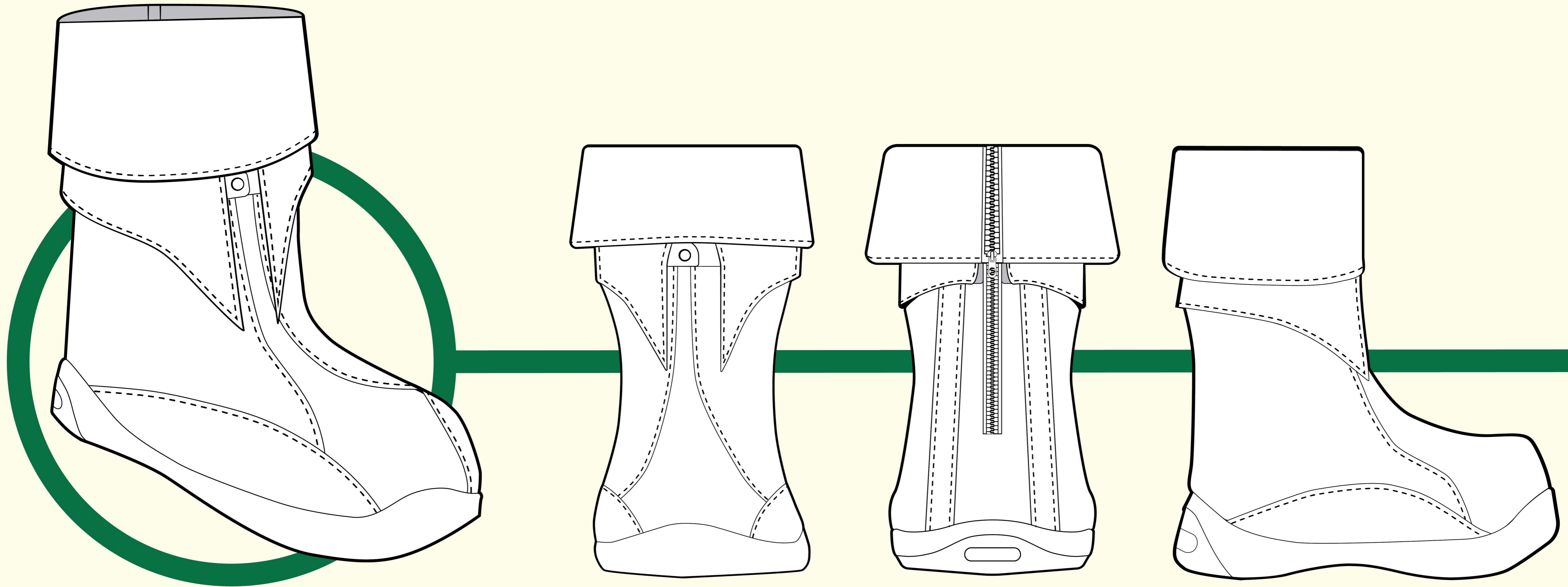
The school uniform serves as an identity marker on two levels. It both challenges individualism and promotes conformity to a group. Re:Home takes traditional elements of the school uniform, like the Eton collar and button-down shirt, and reimagines them.

I draw inspiration from the natural surroundings of my hometown, Vancouver, B.C. Through exploring form, function, and color, I aim to revive the identities that can get lost in the collective nature of uniforms

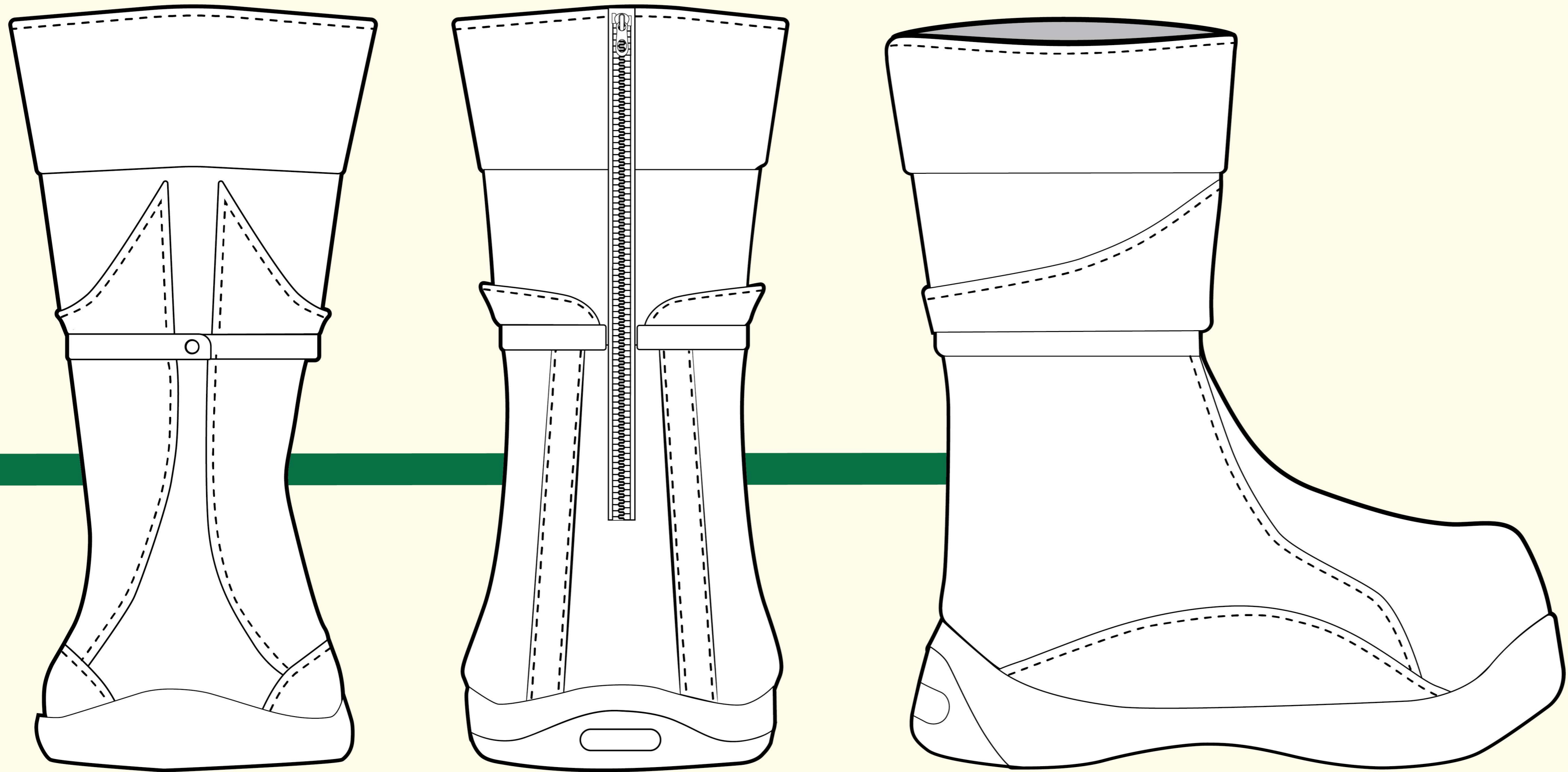






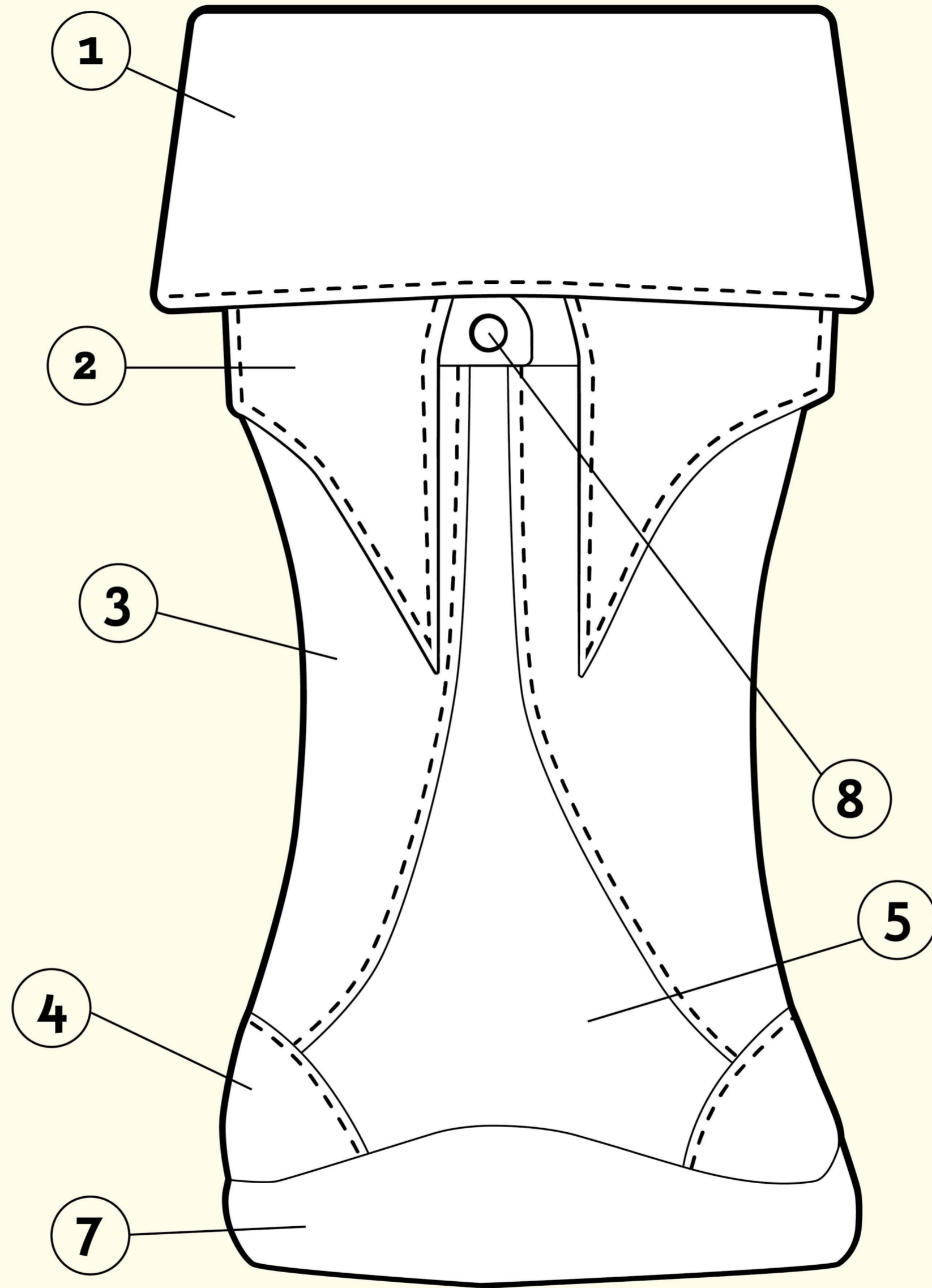


folded view - 3/4, front, back, side

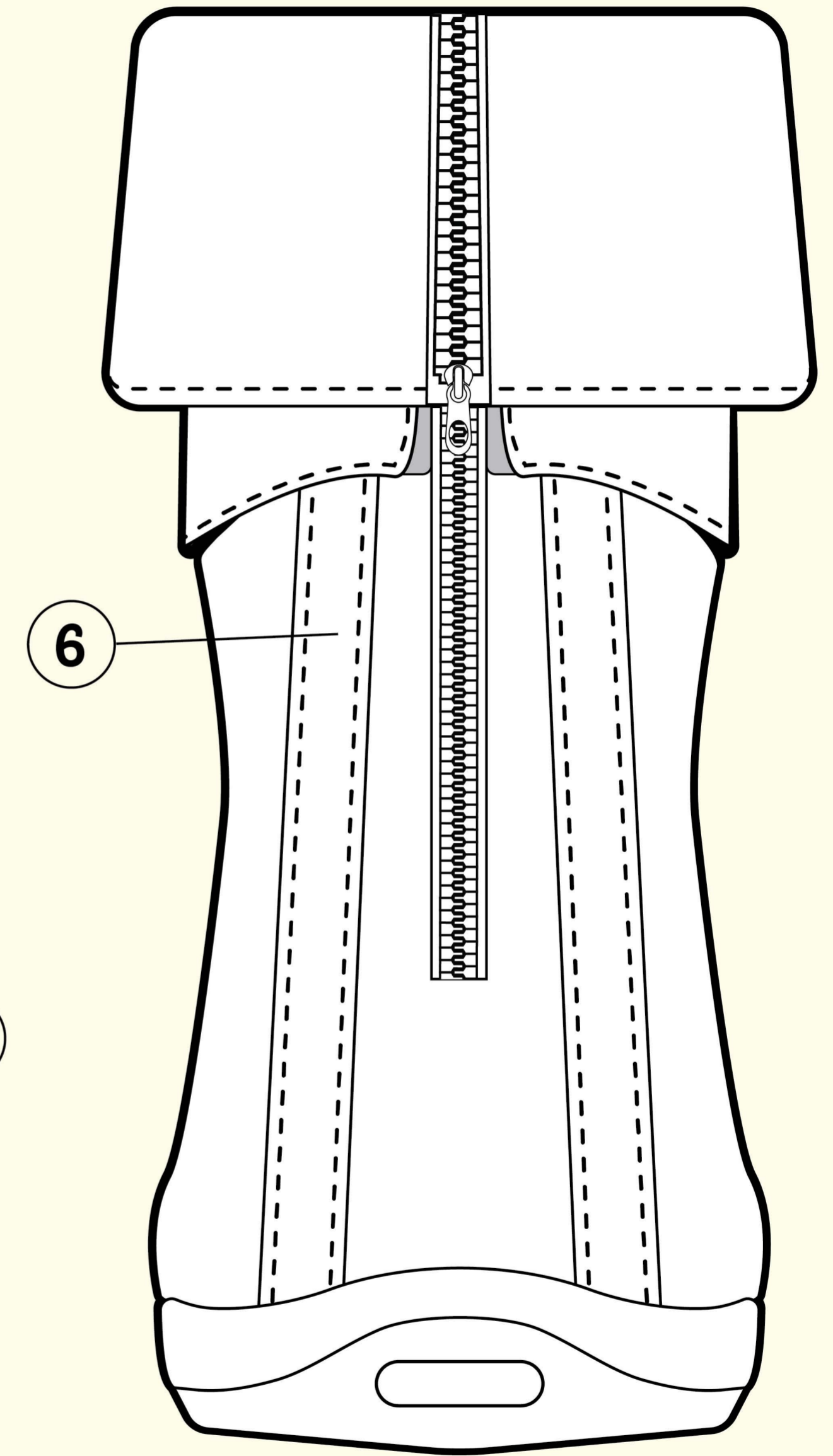


unfolded view - front, back, side

MATERIALS	
1. Upper 1	nubuck leather
2. Upper 2	nubuck leather
3. Upper 3	full grain pebble leather - oil tanned calf skin
4. Upper 4	nubuck leather
4. Upper 5	nubuck leather
5. Upper 6	nubuck leather
6. Lining	full grain calf skin
7. Outsole	vulcanized recycled rubber tires
HARDWARE	
9. Snap	brush finish antique brass
10. Zipper	double sided zipper
11. Thread+Size	bonded nylon in hunter green and black Tex 135

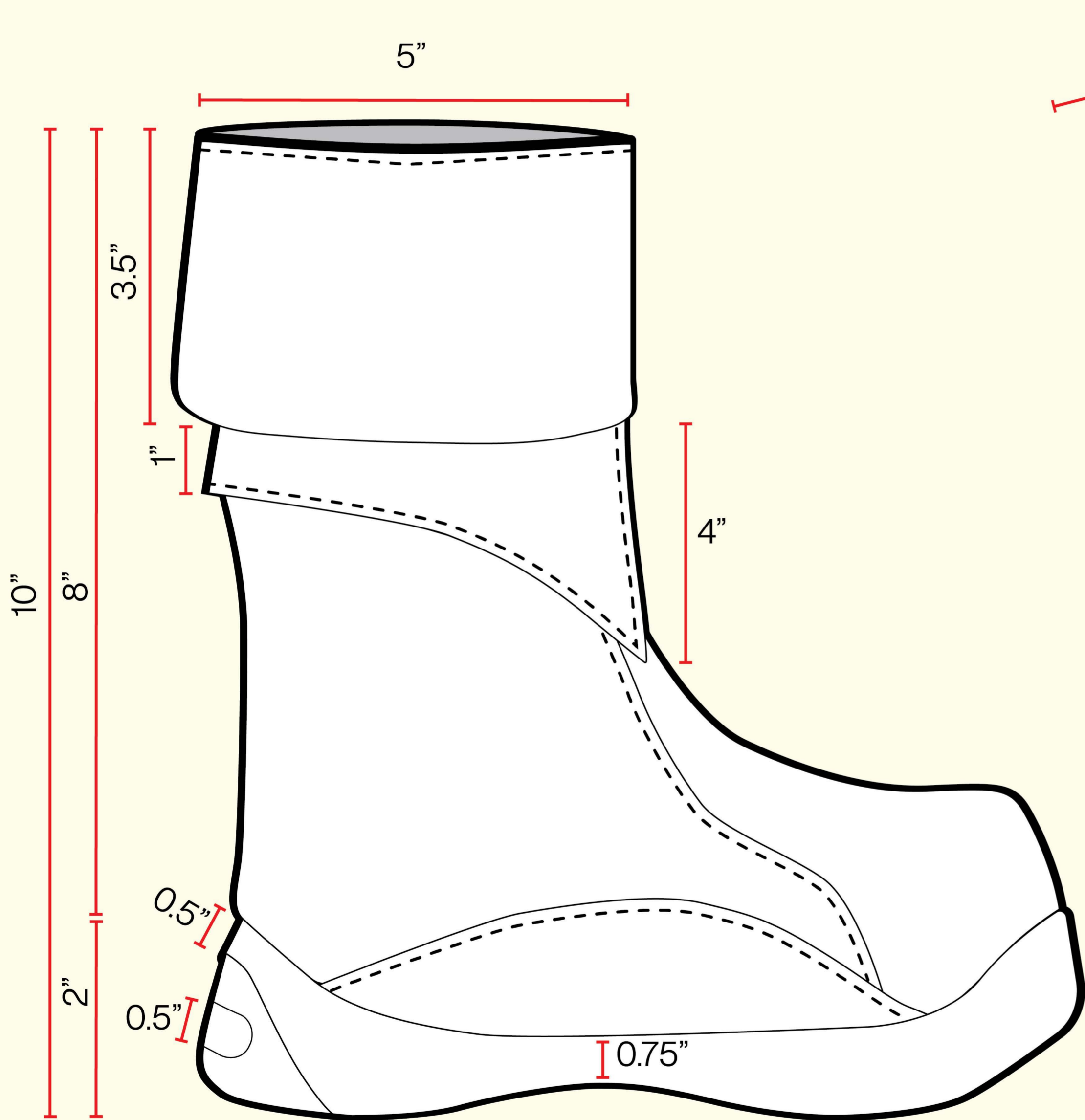


front

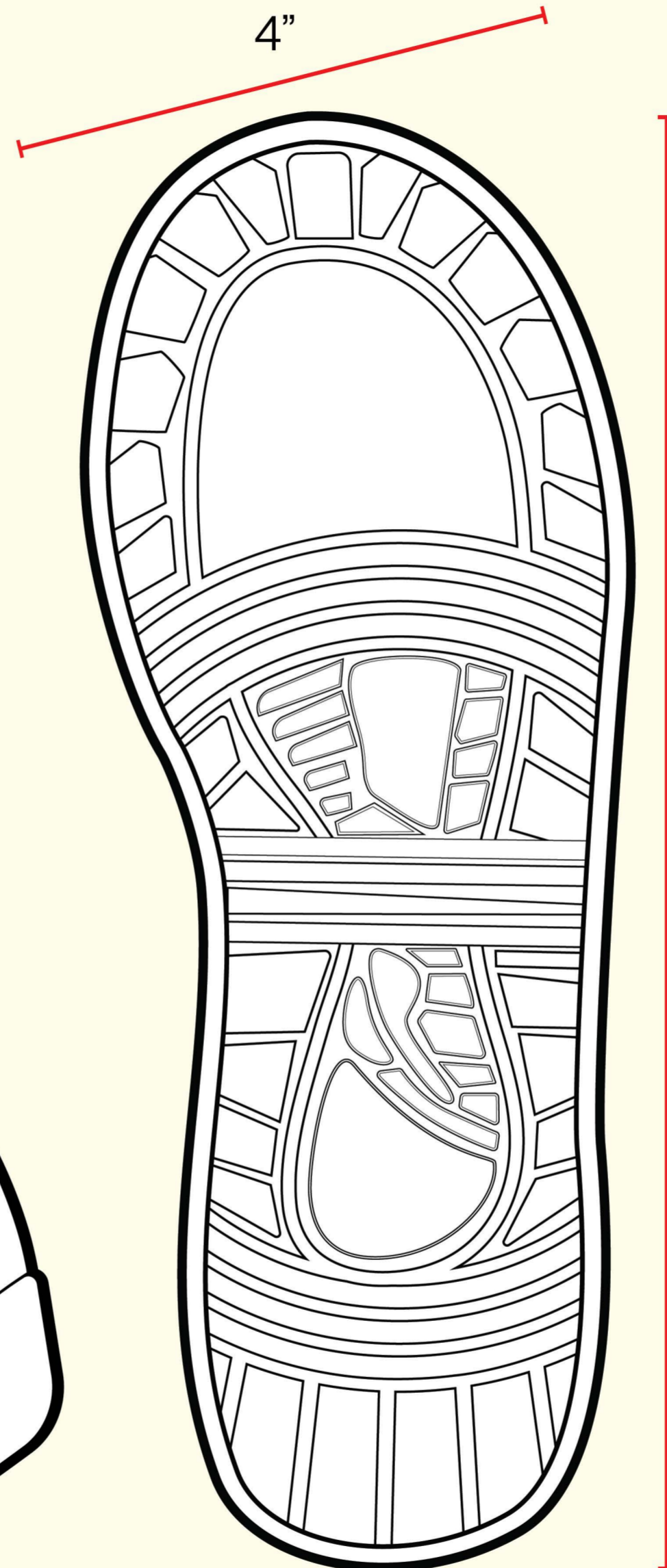


back

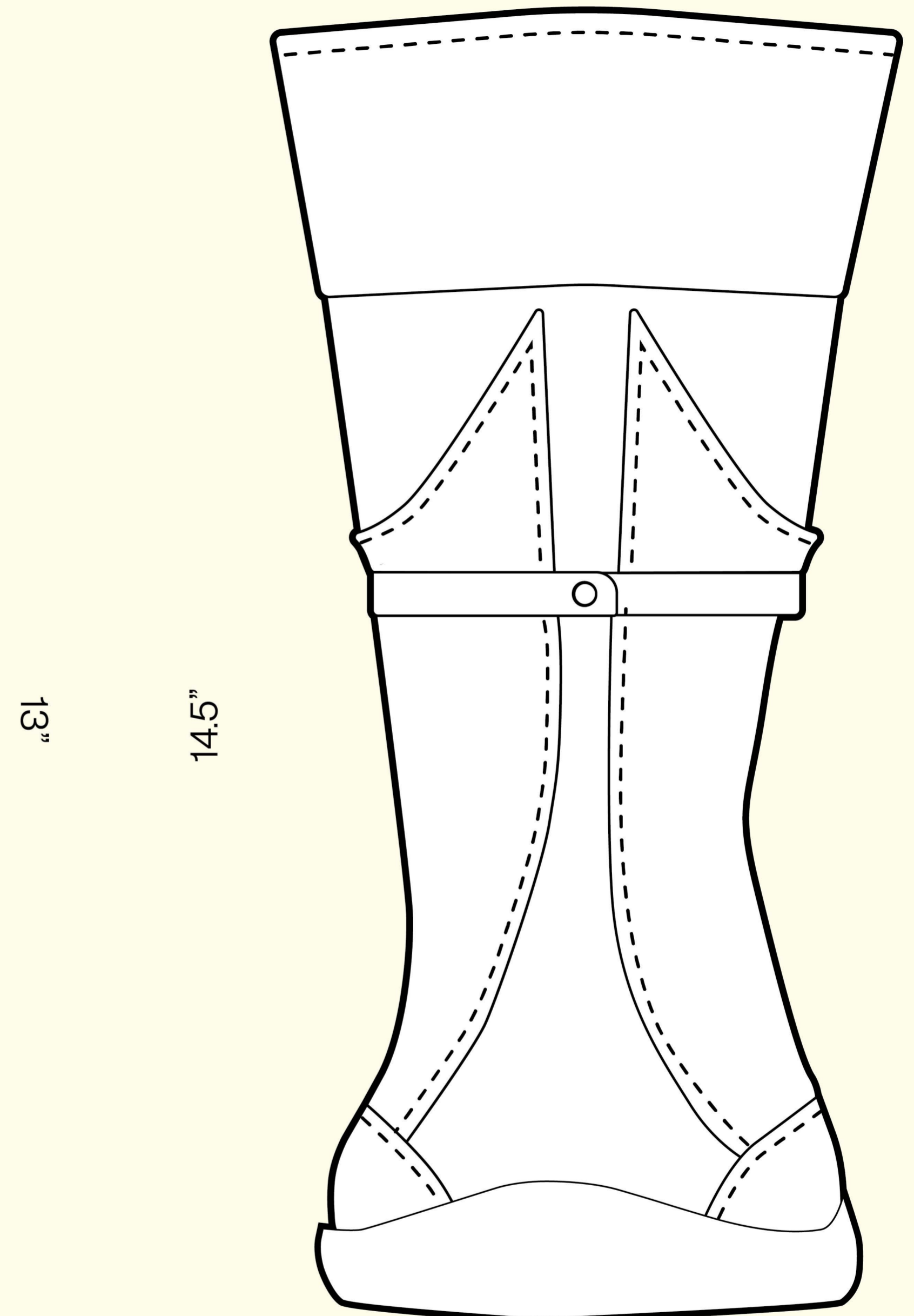
*measurements in inches



side

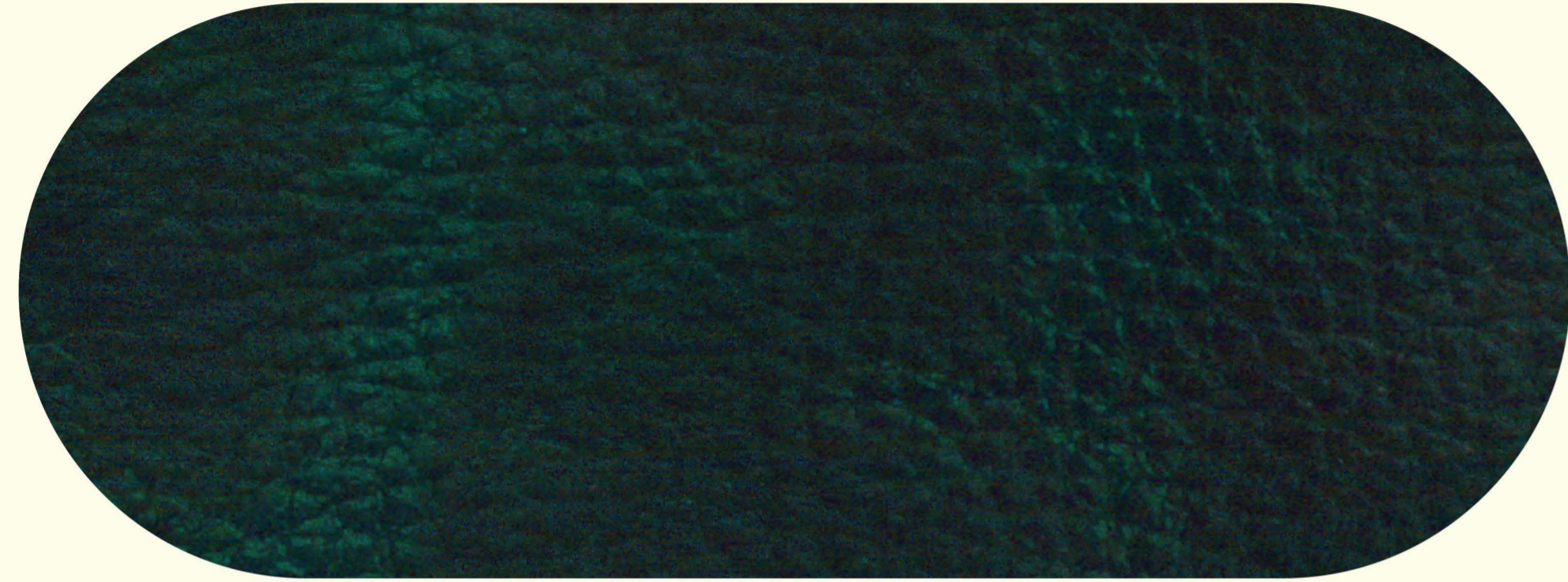


outsole



front (unfolded)

MATERIALS + HARDWARE



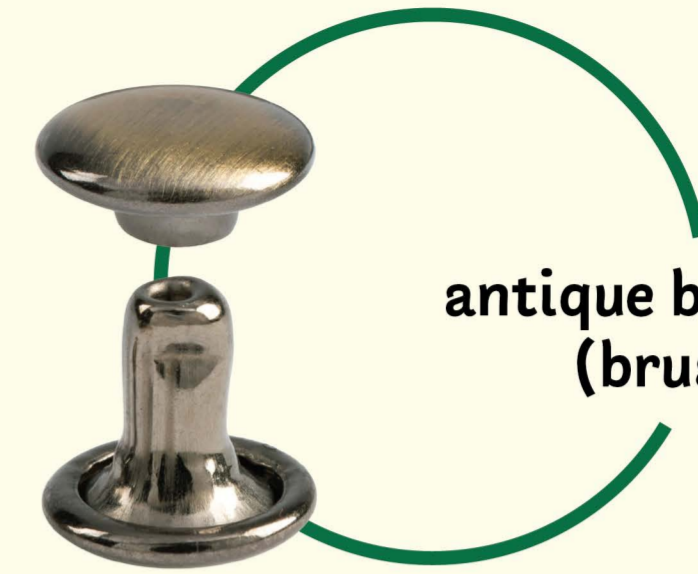
full grain pebble leather - oil tanned calf skin



nubuck leather



Bonded nylon
Tex 135



antique brass rivet
(brush finish)

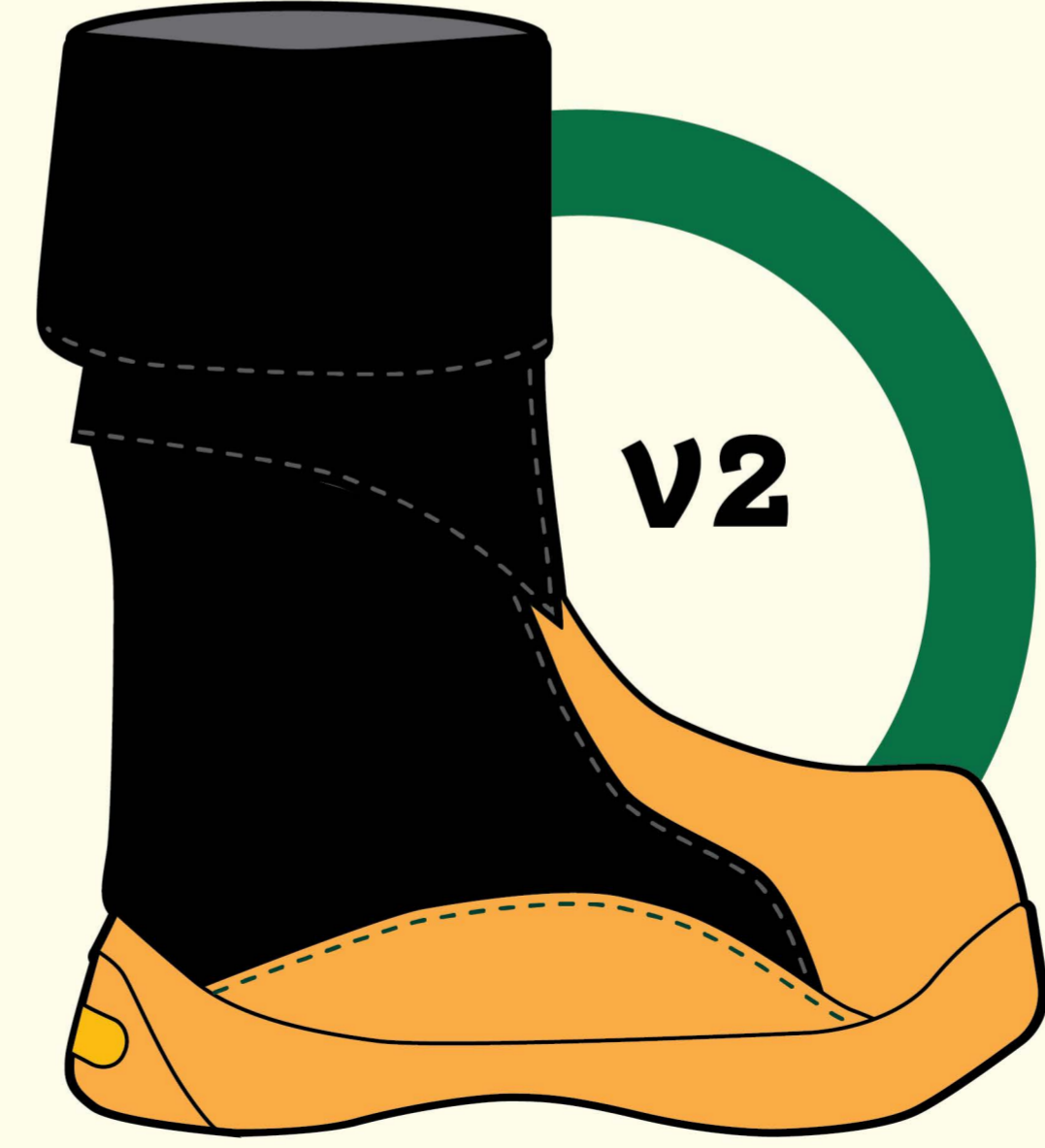


double sided zipper



recycled rubber tires

ex 1.



COLOURWAYS

- black
#1f1e20
- white
#ffffff
- huntergreen
#133e37
- honeycombyellow
#fbac47

- 1. Upper 1 ●
- 2. Upper 2 ●
- 3. Upper 3 ●
- 4. Upper 4 ●
- 5. Upper 5 ●
- 6. Upper 6 ●
- 7. Outsole ●

VARIATIONS

*upper 4 and 6 must correspond to each other



RE:HOME



RE:HOME