



SIPHON!

TYPE 1 DIABETES THROUGH FASHION

Siphon

SS:23

Empowering young people with Type 1 Diabetes through fashion.
Womenswear pattern cutter exploring Avant Garde shapes and tailoring.

My concept is inspired by my brother and aunty's lived experience with Type 1 Diabetes (T1D). I explore, through fashion, their experience in form, fabric and detail represented through mechanical element how it feels to have a hypoglycaemic incident and to have to inject or use a pump, often in front of others, in order to survive. Insulin is a hormone that diabetics can no longer produce. We need insulin to regulate blood sugars, therefore a diabetic must self-administer insulin through an injection every time they eat. The dramatic 'red carpet' mood of the work represents awareness-raising opportunities and celebrates their resilience by coming to terms with living with this life-threatening condition to the point of acceptance and being at peace. My garment is equipped with clear, functioning tubes which the model will showcase when she simulates an injection that starts a flow of water and air pumping through the tubes to represent insulin travelling in the bloodstream. Additionally, the print on the bag is inspired from a photo of my brother's hand holding an injection pen with my mum's hand reaching out to help him. It is covered in hydro chromic paste that reveals the colour of the insulin when water is added to create a visual effect. Hypoglycaemia means low blood sugar that, for a Type 1 Diabetic, could lead to a coma or possibly death if not treated immediately. My second garment silhouette is influenced by the stages of going through a 'hypo' and how that person feels. The garment is inspired by my artefact paddling pool skirt gives the effect of dizziness when the model spins around, with a contrast of masculine tailoring on the female form creating structure with the high raised shoulder that is inspired by sugar levels going up and down.

A hypoglycaemia is when a type one diabetic experiences a dangerous low blood sugar that could lead to a coma or possibly death if not treated immediately. My second garment silhouette is influenced by the stages of going through a hypo and how that person feels.



The garment is inspired by my artefact paddling pool skirt gives the effect of dizziness when the model spins around, with a contrast of masculine tailoring on the female form creating structure with the high raised shoulder that is inspired by sugar levels going up and down.



Siphon
SS:23
Look One

Siphon

SS:23

Look Two



My garment is equipped with clear, functioning tubes which the model will showcase when she simulates an injection that starts a flow of water and air pumping through the tubes to represent insulin travelling in the bloodstream.



Additionally, the print on the bag is inspired from a photo of my brother's hand holding an injection pen with my mum's hand reaching out to help him. It is covered in hydro chromic paste that reveals the colour of the insulin when water is added to create a visual effect.



Siphon
SS:23
Look Three



Leather moulded Shoes



Leather moulded dress inspired by one of the symptoms of having a hypoglycaemia (hypo) shaking.

Siphon

SS:23

Look Four



Siphon SS:23
Hollie Lesley Haughin

Look four is inspired by a symptom of a hypo sweating. The garment has 4 light up fans attached to the tailored jacket which moves the skirt fabric around.



250

200

150

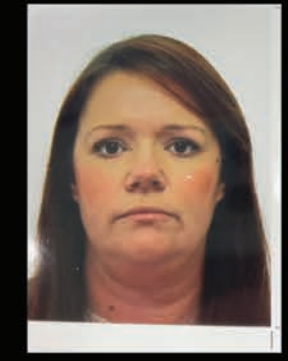
100

50

SS:23

Concept

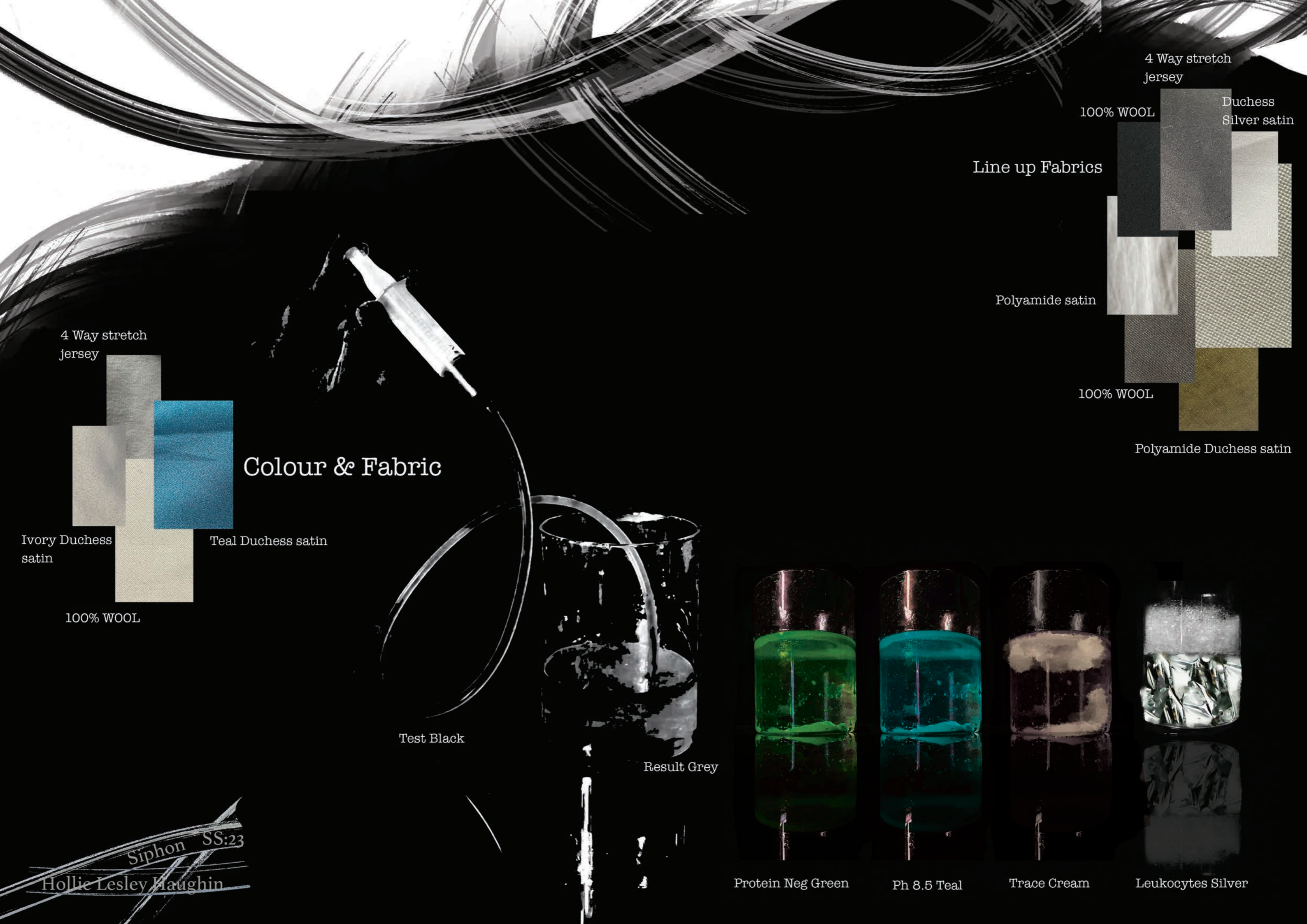
I explore, through fashion, their experience of how it feels to have a hypoglycaemic incident (hypo), and to have to inject or use a pump, often in front of others, in order to survive. I represent this through fashion form, fabric and detail, combined with the mechanical elements of the process.



Ryan and Gail were both diagnosed with Type one diabetes aged 13.

Siphon SS:23
Hollie Lesley Naughin

I am inspired by my brother getting his bloods taken and the liquid filling up the tube.



Colour & Fabric

4 Way stretch jersey



Ivory Duchess satin

Teal Duchess satin

100% WOOL

Line up Fabrics

4 Way stretch jersey

100% WOOL

Duchess Silver satin

Polyamide satin

100% WOOL

Polyamide Duchess satin

Test Black

Result Grey

Protein Neg Green

Ph 8.5 Teal

Trace Cream

Leukocytes Silver

Siphon SS:23
Hollie Lesley Naughin

Market Level & Muse

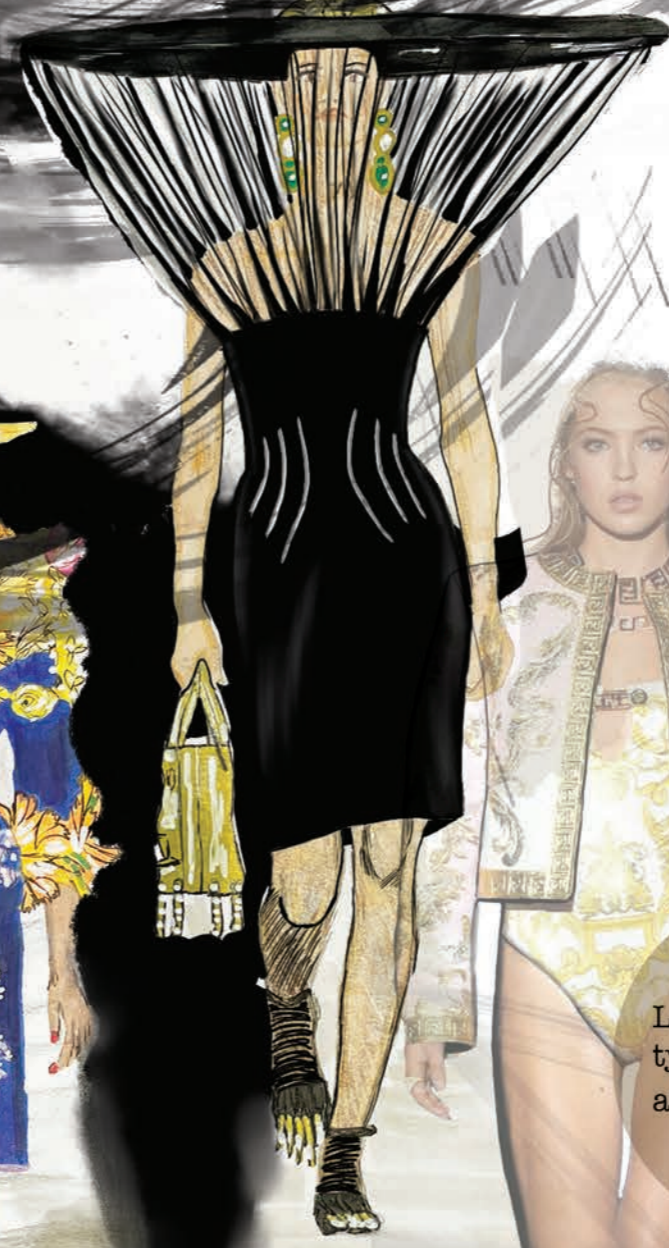
Contemporary challenging garments with meaningful and curious fabrics, shapes and forms.



Schiaparelli



Couture Fall 2022



Couture Spring 2022



Lila Moss diagnosed with type 1 diabetes at the age of 8.

Sophisticated, forthcoming, unique, unstoppable, hard working and confident.

Muse

Fendi-Versace catwalk showing off the insulin pump on her thigh while modelling.



Siphon SS:23

Hollie Lesley Haughin



Interview Research

I decided to interview my brother and aunty. This inspired my project as I really got to understand what it is like living with type one diabetes.

‘It’s life - threatening’

‘I have a fear of needles’

‘If you don’t have your insulin you will eventually die’

‘My pancreas just stopped working’



Type 1 Diabetes is where your pancreas stops working properly, consequently your body no longer produces insulin.

Humans need insulin to live

Deconstructed Tailor Jacket

250
200
150
100
50

Collar and under collar

I have deconstructed a Richard James Mayfair and an Antique Rogue Tailors Jacket to understand every key area and how this is made.

Deconstructed piece including pocket opening.

Canvas shoulder showing multiple layers.

The Canvas shoulder attached is a sleeve head roll and under arm.

520 500 120 100 20

High Rise Jacket Development

Development stages of the Jacket.

High Rise Jacket is inspired by symptoms of having a hypo.

Design was changed to have the collar standing up.

First, the shoulder started with a structured shoulder piece.

Cut the jacket short with a curve around the waist.

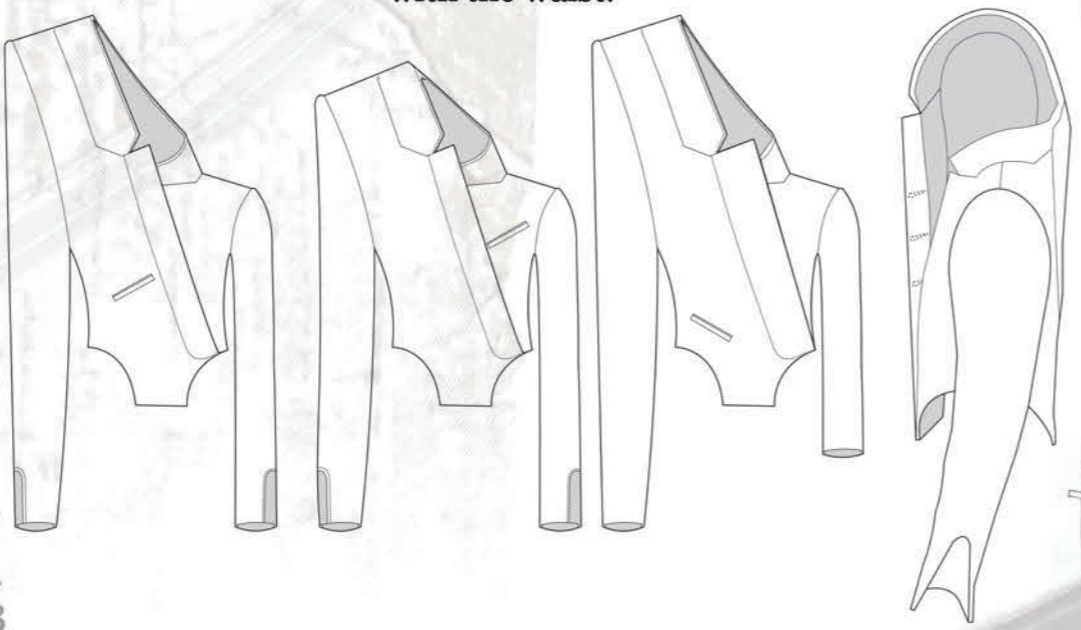
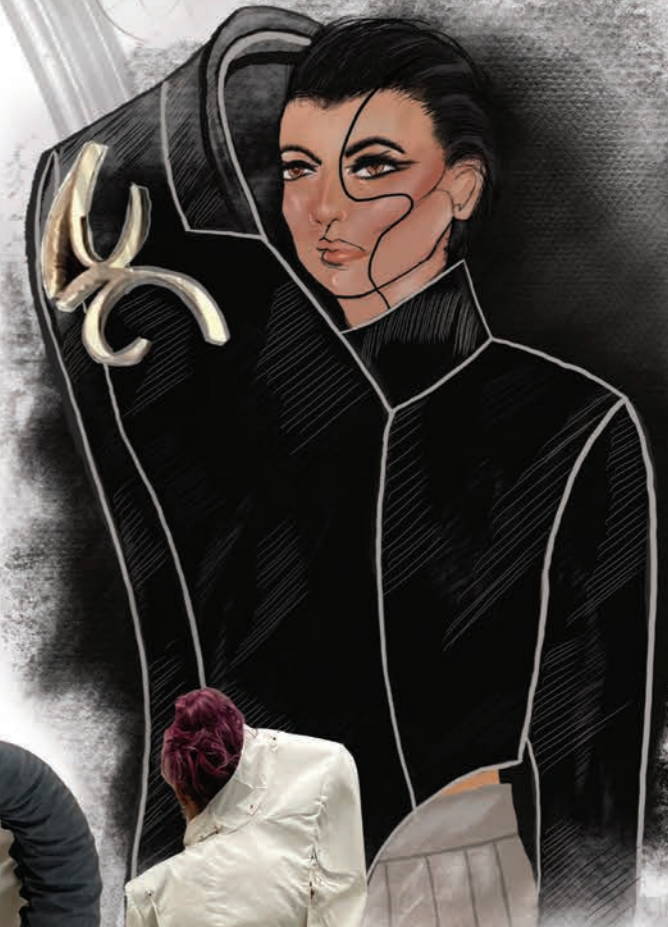
Curve around the sleeve to correspond with the waist.

Third Toile made in wool, developed into foam shoulder pad and padded front right side.

Changed the Jacket block to create a more fitting shape.

Look One Fitting

Foam shoulder pad with layers built up attached with tailoring tags.



Skirt Development

250

200

150

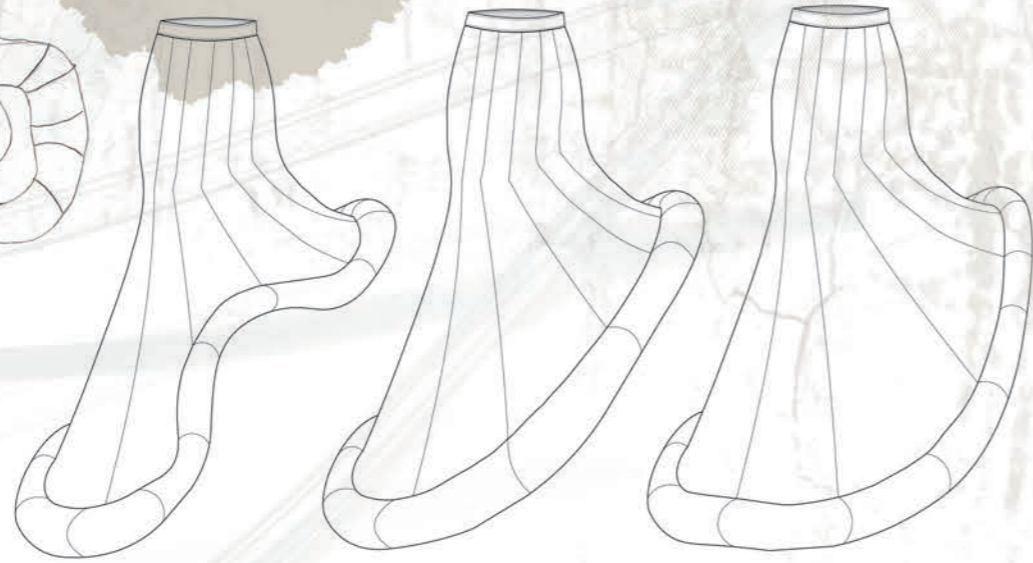
100

50

The Skirt shape has been inspired by the paddling pool skirt I made for my artefact.



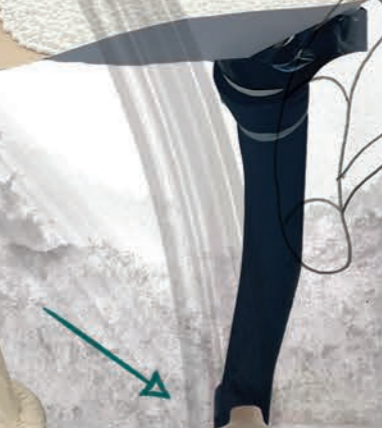
Started adding panels into the skirt.



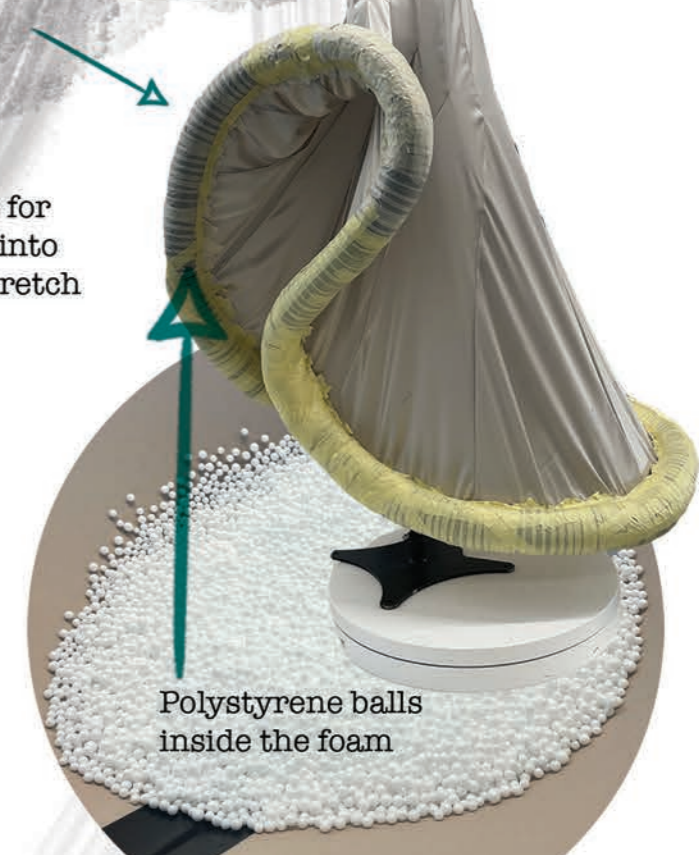
I first of all tested out the shape in calico, then I tested the shape out in Duchess satin to see how this reacts.



To fill up the insulation foam, I used polystyrene balls to fill the tube.



Creating a new pattern for the bottom of the skirt into panels using a 4 way stretch jersey.



Polystyrene balls inside the foam

Siphon SS:23

Hollie Lesley Haughin

Second Look Development with Mechanical Elements

250
200
150
100
50



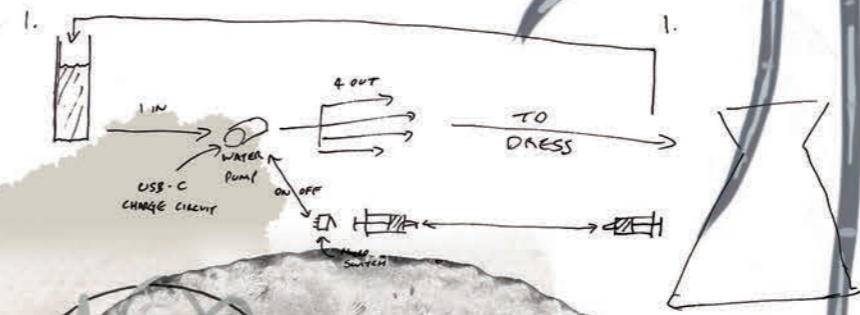
I wanted to create an experience garment. Water and air will be running through the clear tubes and the model will use a syringe to start the water. The idea behind this is to show an example of injecting insulin into the body that people have to do on a daily basis. As we need insulin to survive.

Development seam placement

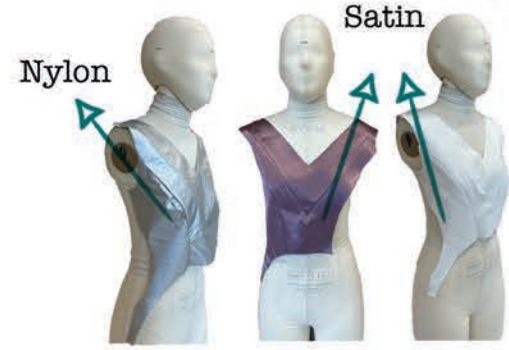
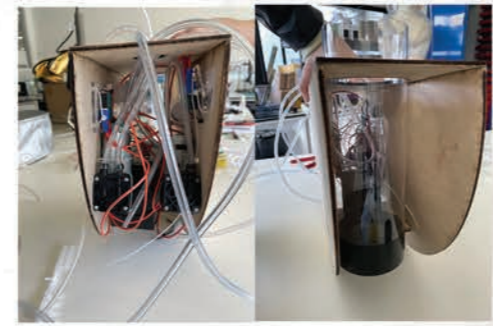


The tubes will be delicately sewed into the seams with velvet ribbon.

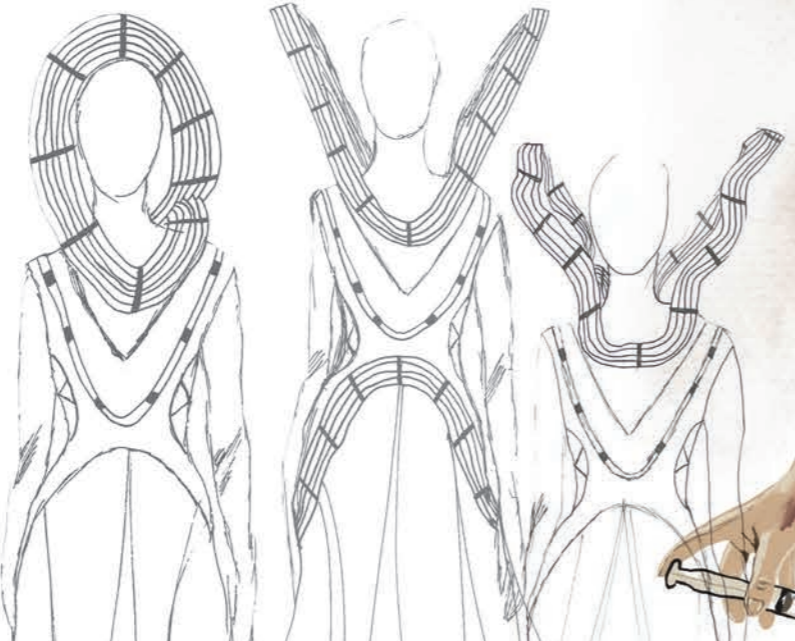
Diagram One - Water running around the tubes



water and air running through the clear tubes. I used a Vacuum pump, which is the power to run the water and air around the tubes.



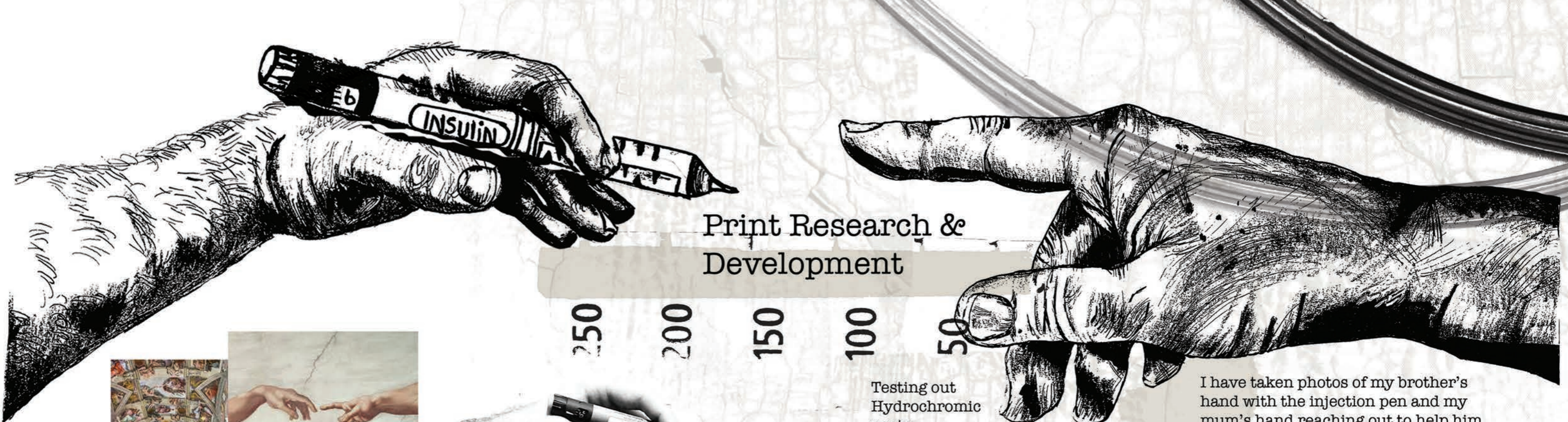
Fabric development from nylon to satin



Water runs around the tubes

Siphon SS:23

Hollie Lesley Haughin



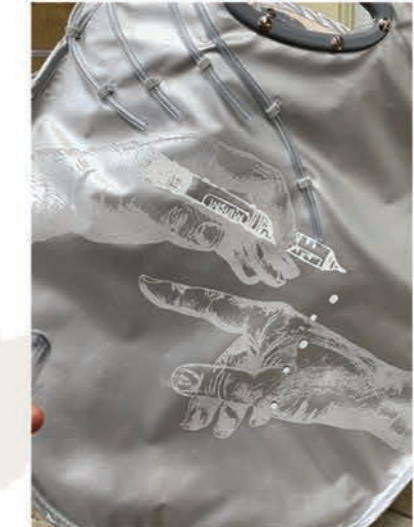
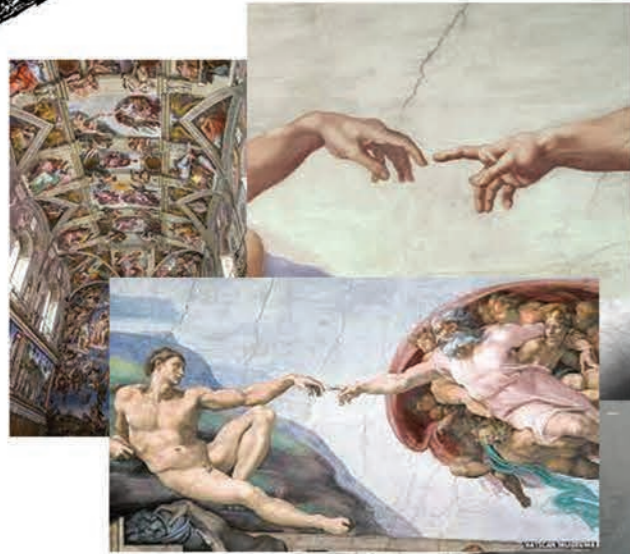
Print Research & Development

250 200 150 100 50

Testing out Hydrochromic paste

I have taken photos of my brother's hand with the injection pen and my mum's hand reaching out to help him. I have then drawn from this to create a screen print.

Water reactive print



No water



Print changes colour when wet

My print is inspired by Sistine Chapel Ceiling painted in Fresco by Michelangelo between 1508 - 1512.

The creation of Adam is the hands of God and Adam being reproduced in countless limitations. This relates to my print as it is my mum's and brother's hand coming together.

Photograph of my development screen print and fabrics.

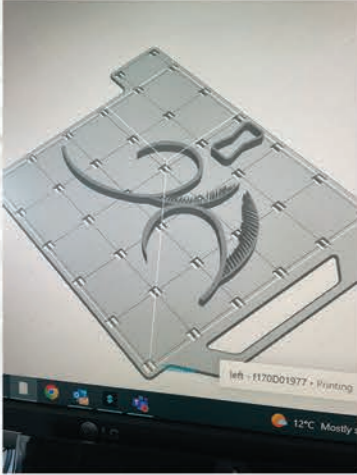
Development of screen print for handbag accessory.



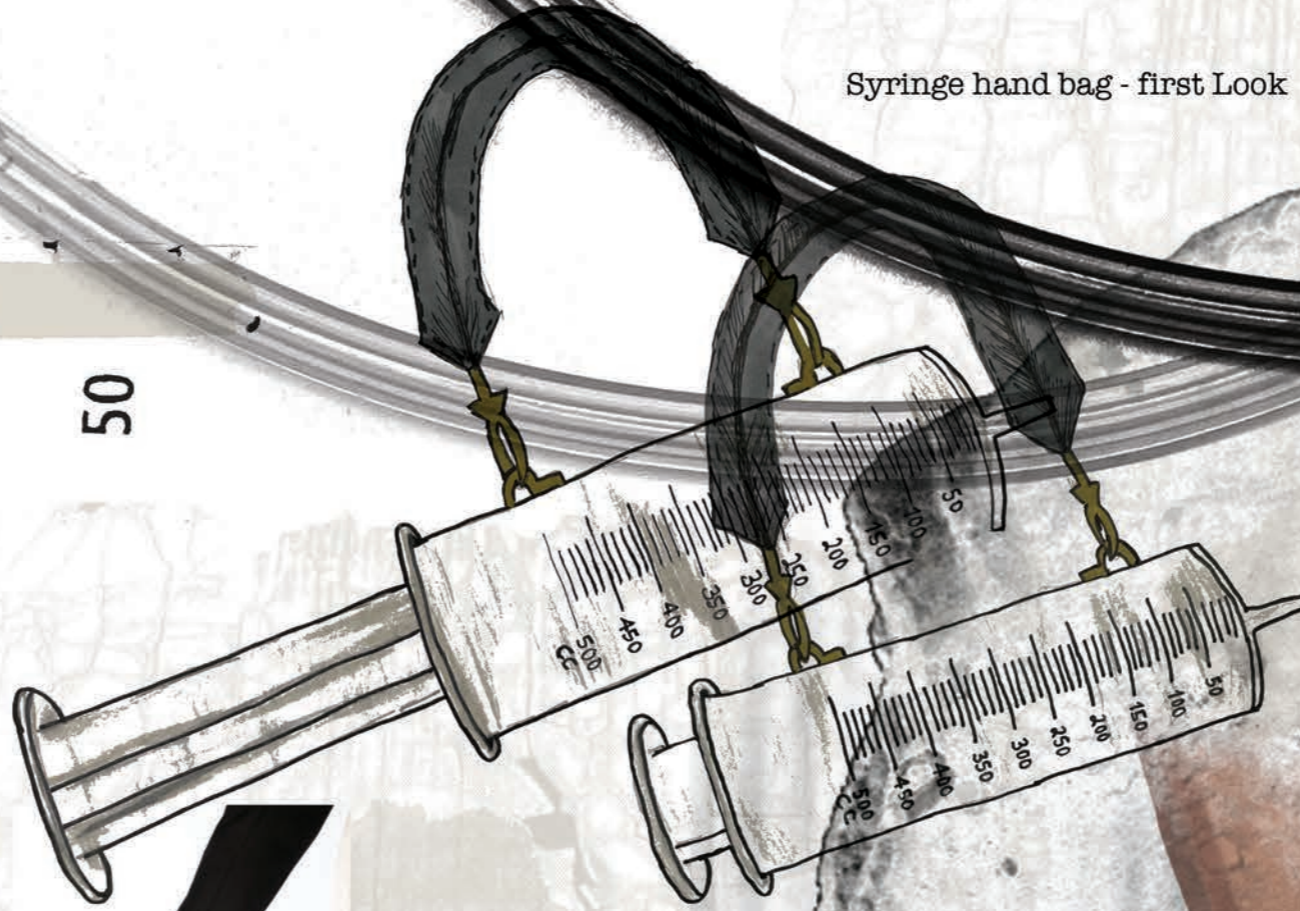
Syringe hand bag - first Look

Accessories & Styling

I designed a brooch in Illustrator and use a 3D printer to print my design - First Look



Black leather gloves to go around the heel and hold onto the ankle - First Look



Second Look print shoes



Print hand bag - Second Look



Final Shoe





Siphon
Hollie Lesley Haughin

Look One



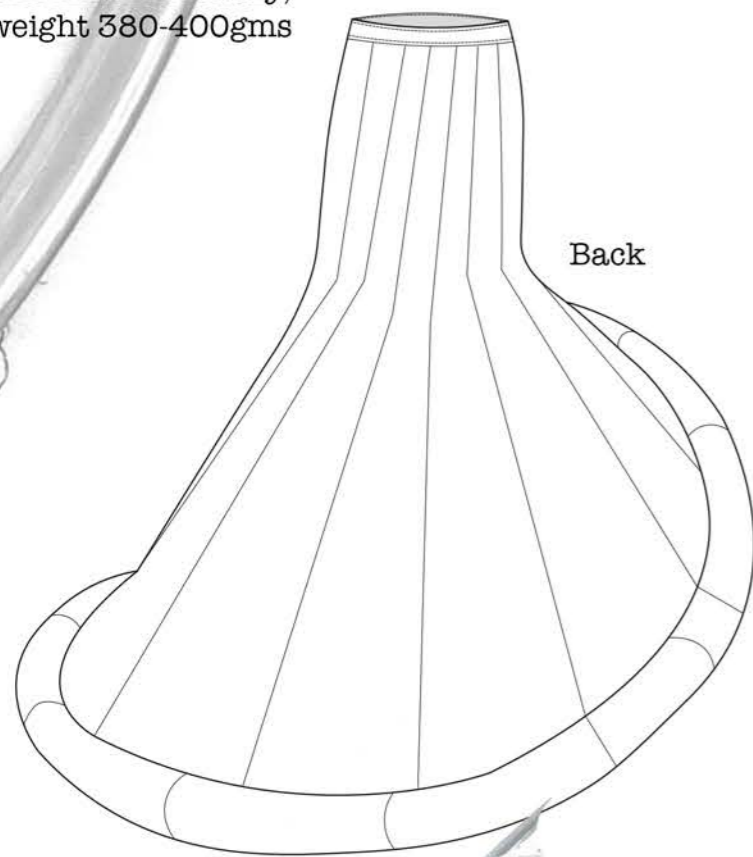
Fabric
Class O Insulation tube
and Polyester foam balls

54' All Cupro
Deluxe Satin Lining
- Onyx, Black,

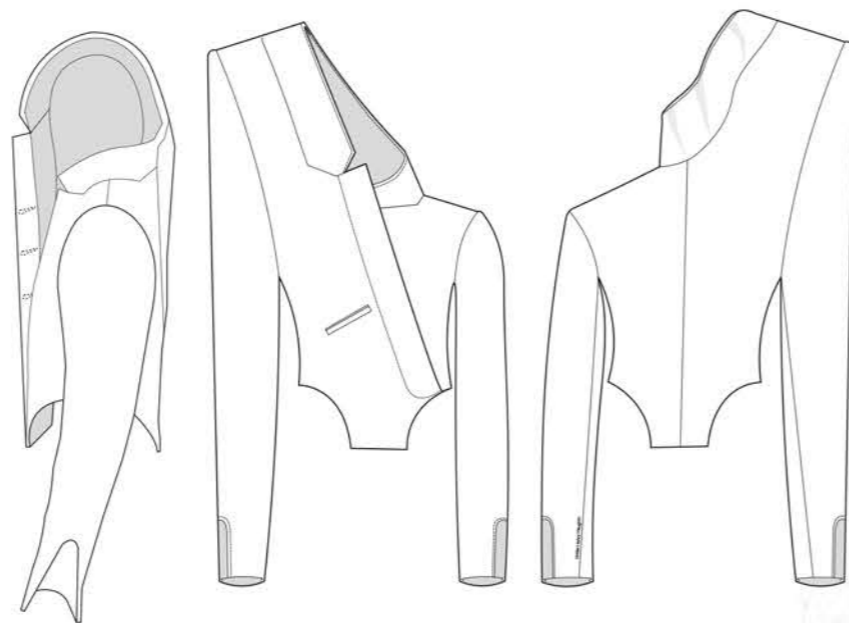
Black Four Way Stretch Jersey,
Composed 95% polyester 5% Spandex.

Polyester Duchess Satin Contessa,
Silver

Black 100% wool woven
and finished locally,
weight 380-400gms



Back



Side

Front

Back

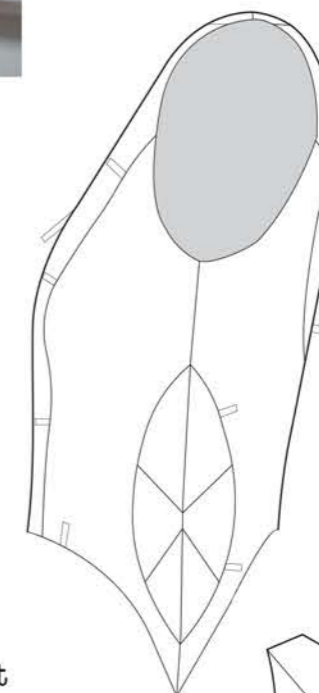
Look Two



Fabric

Satin Polyamid Stone
100% Polyamide Weight 265 g/m
Circular Fabric Standard

54" Acetate/Viscose Satin
Lining cream.
Width 150cm

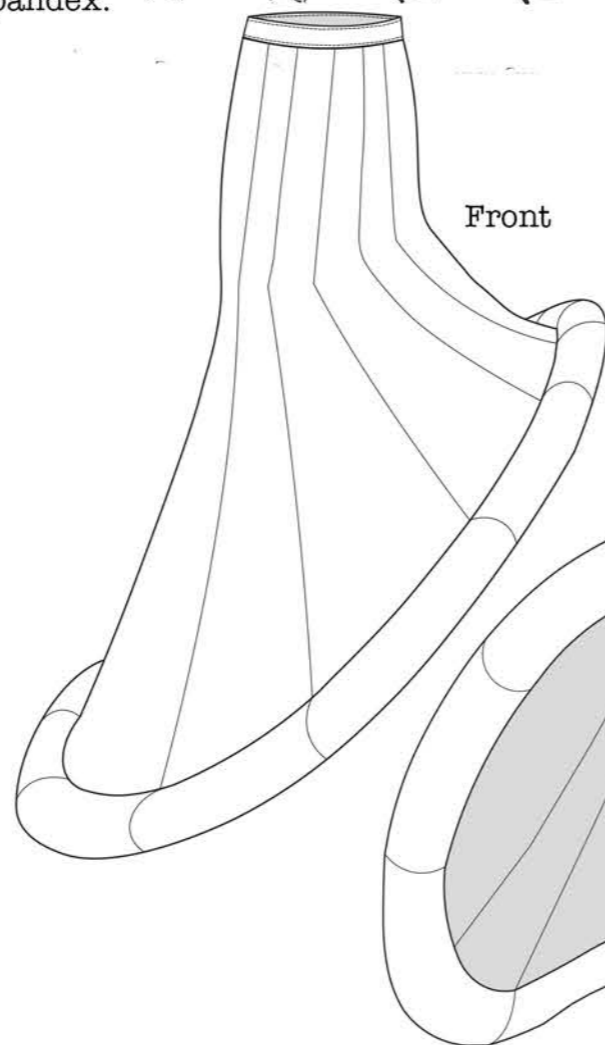


Close up
Side view

Technical Flats

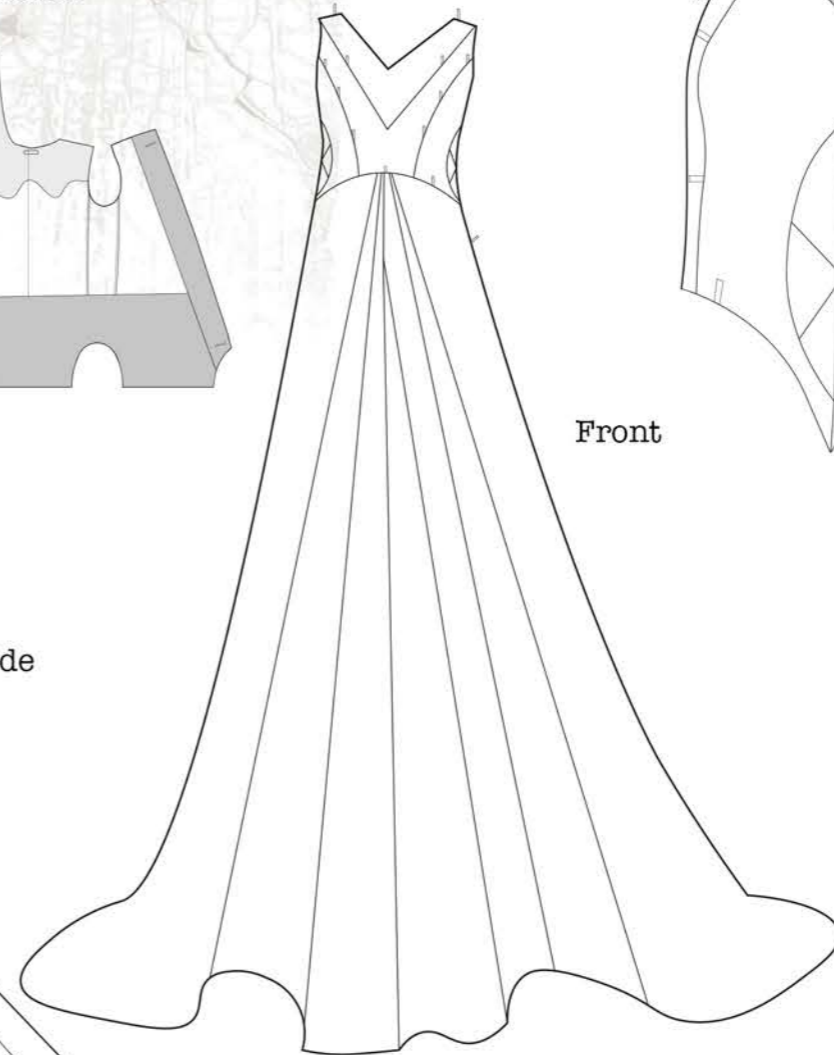
250
200
150
100
50

Inside of Jacket



Front

Side



Front



Back

Siphon SS:23

Hollie Lesley Haughin