



KAYA- Research

Leather Work

- **Leather work** was the main occupation of the **Regar community**. They live in the drought prone areas around the town **Beawar, Rajasthan**. Traditionally, they have been experts in the **tanning of hides and making strong leather products like mojaris (shoes), saddles and harnesses for animals**. This 300 year old leather craft was given a new lease of life by the efforts of Ravi Matthai of IIM and Ashoke Chatterjee of NID, Ahmedabad, in 1975. **Jawaja Leather Association** was formed, craftsmen were given training in **new techniques of processing leather** and designs for new products, and then, there was no looking back.
- From processing of **raw skins to the finishing of the product**, every process is done **without the use of any machines**, in the houses of the craftsmen. The use of **new techniques** considerably **reduced** the **odour of leather** while it is prepared; therefore the craftsmen are able to **work at their homes from start to finish**.



- **Raw buffalo skins** that are sourced from nearby towns of Nasirabad and Raipur, are **first soaked in a solution of lime (choona) and sodium sulphate** for about **15 to 20 days**. This **removes hair** from the raw skin and prepares it for further processing. The **hides are stitched at the edges** with a **local grass, known as moonj, and filled with salt water and babool bark powder** for the process of **veg-tanning**. This **solution is changed** around **10 to 15 times**, until the hide becomes **stable and watertight**. The hides are then **sun dried** and **polished with oil**. After some **scraping of the underside and dyeing**, the hide is ready to be turned into the **most desirable products**.
- Bags and accessories, some in **new designs and some in old ones**, are **handcrafted by the men and women**, who divide their work equally. The beauty of **Jawaja leather** work is that it is not just **handcrafted from start to finish**, the leather products are **evenstitched with leather strips instead of threads**.
- Two **layers of leather** are first **stuck** together and then **stitched by punching holes with awls, or large needle like tools, and leather strips** are made to **pass through the layers, binding** them together.

- The **leather stitches have a characteristic diamond shape** that adds to the understated elegance of these leather products.
- Even though one medium sized bag can be stitched in one day, with the involvement of two people, the processing of hides for preparation takes up one month and a lot of involvement. The outcome is **sturdy leather, which lasts years and ages beautifully**. While some of the **classic designs** created at the beginning of Jawaja project are still popular, craftsmen have developed **products like laptop bags and accessories** for a newer market.
- The craft that was revived with the formation of Artisans' Association of Jawaja now prospers, but also faces new challenges. While **environmental pollution** continues to be an **important issue**, the **younger generation** may be losing interest in this **traditional craft**. Many now have salaried jobs in nearby towns. Yet, as **exports of these classy leather products rise, growing international acclaim** will make this craft thrive for many more years.



Choli, Kanchali, Angia

- Indian women either left the upper half of their bodies bare or covered their breasts with a strip of unstitched fabric knotted at front in different ways.
- Choli was designed to support bust
- Choli was first introduced to the subcontinent in the first century AD by the Shakas and Kushans.
- Tight fitted, Brassiere like garment held in place strings tied around the neck and under bust at the back.
- Variations:
 1. Knotted at front
 2. Long and short sleeves
 3. With Flaps
 4. Covered back
 5. Uncovered back (backless)
 6. Embroidered



Provenance: Bikaner, Rajasthan
Kanchali

Date: 1997- 2001

Measurements: length 49 cm, width 31.5 cm

Culture: Meghwal

Process: Cutting, Dyeing, Embroidering.

- The cups were made of small triangular pieces of fabric, known as purdah. Fit snugly over the breast.
- Both bodice and sleeves are highly ornamented.
- Whether a stitched choli or an unstitched breast band was erotic and decorative nature of upper garment.
- Royal cholis were made of cotton, silk, gold, and woven brocades.
- They were embroidered with zardozi and patched in gota.
- While in Western India, Kutch and the Deccan cholis ere thread embroidered with traditional flowering motifs and variety of stylized birds and animal patterns.
- Cholis were considered an important part of a bride's trousseau (Traditional hand embroidered by female members of family)



- In eighteenth century, halter neck version of choli, known as angia, became fashionable in Muslim courts.
- Angia was paired with different variety of pajamas.
- Fabric used was thin semi-transparent cloth - Gauze, Net and fine Muslin
- Closely fitted garment, a single wrinkle or perceptible seam in it is a defect.
- It is made to fit the bust with great exactness, and to fasten behind with strong cords, the sleeves are very short and tight
- Angia is usually worn with tunics and waistcoats (sadri)





Choli
19th century, Indian
Source: The Met Museum



Choli

Late 19th and early 20th
century, Indian

Source: The Met Museum



Choli
20th century, Indian
Source: The Met Museum



Source: British Museum

Object type: Blouse

Description: A woman's blouse, a 'chaubandicholo'

Production place: Nepal

Fabric: Cotton

Dimensions Length: Length: 51 centimetres

Width: Width: 147 centimetres (across arms) (across arms)

Short embroidered 'choli' (blouse)

mid 20th century-late 20th century

This blouse is a fine example of the court embroidery and metal weaving associated with the Kutch princely house in Gujarat, India.



Place where the work was made

Bhirandiyara →
Banni → Kutch →
Gujarat → India

Date

mid 20th
century-late 20th
century

Materials used

embroidered
cotton; long sleeves

Dimension

47.0 x 83.0 cm

Source: Art gallery of New South Wales

Mirror work 'choli' (blouse)

20th century



Place where the work was made

Kutch- Gujarat- India

Date

20th century

Materials used

embroidery on cotton and appliqué; dusty red ground with bright red and orange work

Dimensions

63.0 x 53.0 cm

Source: Art gallery of New South Wales

'Casual' choli (blouse) worn by queen

late 19th century



Place where the work was made Kutch- India

Date late 19th century

Materials used embroidered silk

Dimensions 28.0 x 92.0 cm

Source: Art gallery of New South Wales

Marriage blouse 'chola' (blouse)

Early 1900s

Front and sleeves closely embroidered with mirrors and small patterns in black, tan and other colours



Medium / Support: silk, silk threads,
mirrors, sequins
Dimensions: L: 27 in.
Source: Indianapolis Museum of Art at
Newfields, United States

Choli (Blouse)

20th century CE

The choli (blouse) is beautifully **embellished with zardozi work**. The **sleeves have a sun and floral creeper design**. The **bodice is heavily embroidered with floral creeper designs**. This type of choli was worn along with an equally rich ghagara and odhani. The **choli has silk cords at the back for fastening**. Such cholis were worn on festive occasions.



Details

Title: Choli (Blouse)

Date created: 20th century CE

Location: India

Type: Blouse

Medium: Silk with zari embroidery

Region: Rajasthan

Source: Chhatrapati Shivaji Maharaj Vastu Sangrahalaya- Mumbai



Blouse

Mid-20th century

Source: Peabody Essex Museum



Details

Title: Blouse

Date created: Mid-20th century,
Gujarat- India

Location created: Gujarat, India

Physical Dimensions: Width: 91 cm x

Height: 49 cm

Type: Blouse

Medium: Cotton, glass, enamel, and silk

Blouse with Figures and Sceneries



This women's blouse, **which originates from India**, features **embroidered beige patterns of horses, geese, chickens, bamboo**, and other lively imagery on a purple weft knitted gauze background.

The **small measurements of the blouse suggest that it was made for a young girl**. After weaving in three or more odd-numbered plain wefts, the strands of bound warp and ground warp thread are twisted once, creating gauze with holes arranged horizontally across the surface, called weft knitted gauze.

Details

Title: Blouse with Figures and Sceneries

Medium: Silk

Length: Garment: 31cm
Shoulder width: 31.5cm



Provenance: Sind
(Victoria and Albert Museum)

Date: 1855

Measurements:

Kanchali: length 73cm, width 44 cm

Choli: length 18cm, width across sleeve 58cm

Description:

This is made of very fine woven silk. The lahariya effect is achieved through the use of different coloured yarns. Each wide coloured strip is separated by a narrow gota ribbon. Small butis, gota, badla, zardozi is used.



Provenance: Jaipur
(Jaipur City Palace Museum)

Date: 1880

Measurements:

Choli: length 24cm



Provenance: Jaipur
(Jaipur City Palace Museum)

Date: 1880

Measurements:

Kanchali: length 71cm

Description:

This is made of very fine woven muslin, Coloured with vegetable dyes and decorated with simple floral and geometric gota designs



Provenance: Jaipur
(Jaipur City Palace Museum)
Date: 1880
Measurements:
Kanchali: length 70cm
Choli: 31cm

Description:

Both the kanchali and the choli worn underneath it are made of fine cotton decorated with gota flowers and embroidered with kalabattun and blue and green silk thread.



Provenance: Jaipur
(Jaipur City Palace Museum)

Date: 1880

Measurements:

Choli: length 31cm, Kanchali:
length 71cm

Description:

This choli and Kanchali set is made of red cotton embellished with gota. The kanchali has been sewn with diagonal gota stripes, and on the choli sleeves horizontally. With movement, the play of light on these shiny stripes would have made the ensemble shimmer and glow.



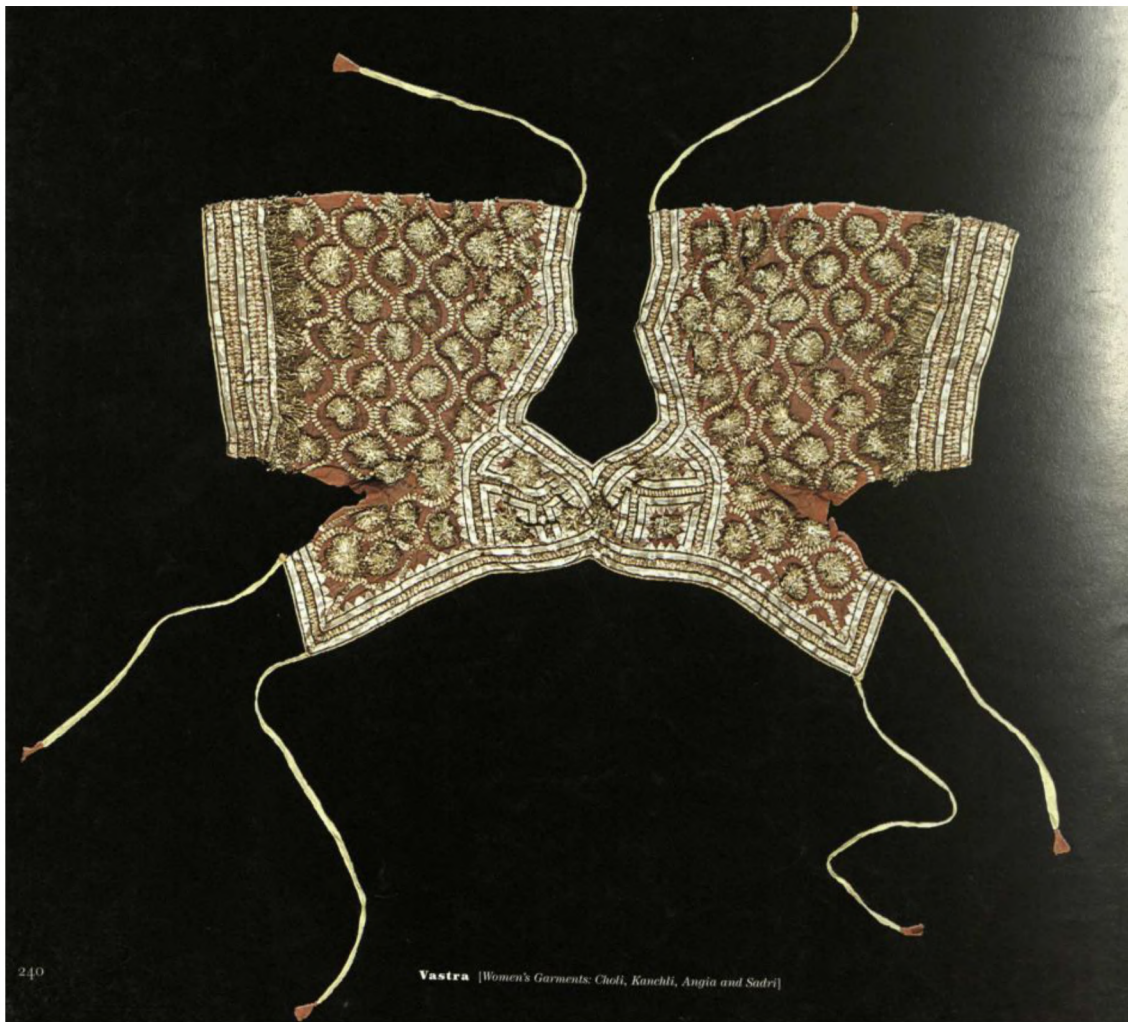
Provenance: Unknown
(Victoria and Albert Museum)

Date: 1880

Measurements: length 18 cm (7 in);
width across sleeves 44cm (17 in)

Description:

This distinctively styled choli is made of dusty-green net fabric and embellished with crinkled gold against the muted colour of the vegetable dye gives the garment an understated elegance.



Provenance: Jaipur
(lent by Maharaja Sawai
Bhawani Singh)
Date: mid- nineteenth cent.
Measurements:
Choli: length 30cm

Description:
This rust cotton choli is
embellished with gold gotha.
The trellis pattern is made with
crinkled gotha ribbon stitched
on the fabric. The rosettes
within each lattice are made of
finely pleated gotha.

...within each lattice are made of finely
pleated *gota*.



Providence : Northern India (Victorian
and Albert Museum)

Date : Early 19th century

Measurements : length 48 cm (19
in.),width at bust - 42cm (16.5 in.)

This **angia** is made of fine transparent
fabric. The wave pattern on the main
body of the garment made of crinkled
gota and the armholes,hem and neck are
finished with rows of gota ribbon.The
bottom border is edged on the inside with
ganga- jamuna kiran.



Provenance: Gujarat (private collection)

Date: early 20th century

Measurements: length 27 cm (10.5 in); sleeve length 41 cm (16 in); waist 33 cm (13 in)

Description:

This thread embroidered orange satin choli has contrasting blue satin cups. The front purdah is dotted with small butis placed around an elaborate plant motif at the centre. Each cup is embroidered with a large round floral motif that is repeated on the top of each sleeve. The sleeves are also embroidered with a fine border. The ties of the blouse are tasselled.



Provenance: Rajmata of Kutch (private collection)

Date: 19th century

Measurements: length 28 cm (11 in); sleeve length 44 cm (17 in); waist 31 cm (12 in)

Description:

This elaborate purple silk choli is a fine example of Saurashtra mochi embroidery. The front bodice is made up of a contrasting pink silk embroidered with traditional round flower motifs which are repeated on the sleeves. All the seams are edged in fine chain embroidery, outlining the various sections of the garment. The tiny rectangles on either side of the bottom of the blouse are a unique decorative touch.



Provenance: Jamnagar, Northern India (Victoria and Albert Museum)

Date: 1867

Measurements: length 29cm (11.5 in), width across sleeve 95 cm (38 in), Cuff to armpit 32cm (12.5 in)

Description:

The olive green satin choli seen here from the back. Embroidered with Zardozi and the sleeves are decorated with a dense trellis and buti pattern.

Provenance: Rajmata of Kutch

Date: late 19th Century

Measurements: length 28cm (11 in), sleeve length 46 cm (18 in), waist 31 cm (12 in)

Description:

The long sleeve plum coloured silk choli. The bodice is adorned whereas the sleeves are densely embroidered with Zardozi and sleeves decorated with round floral motifs.



Province : Lucknow (AEDTA, Paris)

Date : late 19th century

Measurements : length 54cm
(21in.), width 44cm(17.5in.)

The sadri would have been worn over an angia or kurta. Its delicate white muslin is beautifully embroidered with chikankari (white - on - white embroidery). The traditional ambi motifs ,crescent moons,sprigs and oval motifs probably held some religious symbolism.

Choli - Keywords

1. Body fitted
2. Sensual
3. Resplendent
4. Sumptuous
5. Opulent
6. Erotic
7. Ornate
8. Sentimental
9. Artisanal
10. Historical
11. Sublime
12. Geometric
13. Radiant
14. Intricate
15. Gauzy
16. Clean cut
17. Aristocratic
18. Elegant
19. Embellished

1. Subtle
2. Meticulous
3. Flamboyant
4. Extravagant
5. Minimalistic
6. Traditional
7. Feminine
8. Contour
9. Heritage
10. Ostentatious
11. Bling
12. Bespangle

Fabric Texture	Colour	Silhouette	Mood	Details, trims surface ornamentation
1. Gauzy	1. Resplendent	1. Body fitted	1. Sensual	1. Ornate
2. Diaphanous	2. Radiant	2. Geometric	2. Sumptuous	2. Intricate
	3. Subtle	3. Clean cut	3. Opulent	3. Clean cut
	4. Minimalistic	4. Minimalistic	4. Erotic	4. Embellished
		5. Contour	5. Flamboyant	5. Meticulous
		6. Ostentatious	6. Sentimental	6. Contour
			7. Minimalistic	7. Flamboyant
			8. Traditional	
			9. Ostentatious	

CHOLI - FINAL KEY WORDS

Fabric

Texture

1. Gauzy
2. **Diaphanous**

Colour

1. Resplendent
2. **Radiant**
3. Subtle
4. Minimalistic

Silhouette

1. Body fitted
2. Geometric
3. **Clean cut**
4. Minimalistic
5. Contour
6. Ostentatious

Mood

1. **Sensual**
2. Sumptuous
3. Opulent
4. **Erotic**
5. **Flamboyant**
6. **Sentimental**
7. Traditional
8. **Ostentatious**

Details, trims surface ornamentation

1. **Ornate**
2. Intricate
3. Clean cut
4. Embellished
5. Meticulous
6. **Contour**
7. Flamboyant

Inspiration

Word definition- Choli (mood & inspiration)

1. **Ostentatious** - characterised by pretentious or showy display; designed to impress.
2. **Sentimental** - of or prompted by feelings of tenderness, sadness, or nostalgia.
3. **Flamboyant** - (of a person or their behaviour) tending to attract attention because of their exuberance, confidence, and stylishness.
4. **Erotic** - relating to or tending to arouse sexual desire or excitement.
5. **Sensual** - relating to or involving gratification of the senses and physical, especially sexual, pleasure.
6. **Ornate** - elaborately or highly decorated.
7. **Radiant** - sending out light; shining or glowing brightly.
8. **Clean Cut** - sharply outlined.
9. **Diaphanous** - (especially of fabric) light, delicate, and translucent.

Leather craft - key words

1. Structured
 2. Clean Cut
 3. Smooth
 4. Subtle
 5. Flattened
 6. Glazed
 7. Utilitarian
 8. Embellished
 9. Unblemished- not flawed / impeccable
 10. Caressing- soft, bland, smooth
 11. Sleek / Gleaming
 12. Malleable
 13. Sheen
 14. Earthy tones
 15. Sophisticated
1. Minimalistic
 2. Bequest
 3. Distinctive figures*

Fabric

Texture

1. Smooth
2. Flattened
3. Unblemished-
not flawed
4. Caressing- soft,
bland, smooth
5. Sleek-glistening,
smooth
6. Malleable-adapt
able,moldable
7. Sheen
8. glazed

Colour

1. Earthy
tones
2. subtle
3. Monochro
matic

Silhouette

1. Minimalistic
2. Structured
3. Clean cut

mood

1. Sophisticated
2. Minimalistic
3. Structured

Details trims surface ornamentation

1. clean cut
2. Embellished
3. Flattened-finish
4. glazed-finish

Leather Craft - FINAL KEY WORDS

Fabric Texture	Colour	Silhouette	mood	Details trims surface ornamentation
<ol style="list-style-type: none">1. Smooth2. Flattened3. Unblemished- (not flawed)4. Caressing- (soft, bland, smooth)5. Sleek-(glistening, smooth)6. Malleable-(adapta ble,moldable)7. Sheen8. glazed	<ol style="list-style-type: none">1. Earthy tones2. subtle3. Monochro matic	<ol style="list-style-type: none">1. Minimalistic2. Structured3. Clean cut	<ol style="list-style-type: none">1. Sophisticated- (revealing/involv ing a great deal of worldly experience and knowledge of fashion and culture)2. Minimalistic-(a person who advocates or practices minimalism)3. Structured-(cons truct or arrange according to the plan, give a pattern or organization)	<ol style="list-style-type: none">1. clean cut(sharply outlined)2. Embellished3. Flattened-finish4. Glazed-finish5. finesse(impressive delicacy and skill)

Inspiration

1.

Word definition - Leather (mood & inspiration)

1. **Sophisticated** - revealing/involving a great deal of worldly experience and knowledge of fashion and culture
2. **Minimalistic** - a person who advocates or practices minimalism
3. **Structured** - construct or arrange according to the plan, give a pattern or organization
4. Bequest - legacy
5. **clean cut**-(sharply outlined)
6. **Sleek**- (glistening,smooth)
7. **Finesse**- (impressive delicacy and skill)
8. **Caressing**- (soft, bland, smooth)

Fabric
Texture
1. Sheer

Colour

1. Monochromatic
2. Subtle
3. English color
4. Blush- hued
5. Multi- hued

Silhouette

1. Clean cut
2. Feminine
3. Voluminous hem
4. amalgamation of traditional Indian textiles with modern, Western-influenced silhouettes.
5. Versatile
6. Bridal
7. Fluid Drapes
8. Modern
9. Sophisticated

Mood

1. Chic
2. **Ostentatious(pretentious or showy display/ designed to impress)**
3. Vivacious
4. **Sentimental(feelings of tenderness,sadness or nostalgia)**
5. **Contemporary(occurring in the present)**
6. Elegant
7. **Feminine (qualities / appearances traditionally associated with women)**
8. Theatrical
9. **Flamboyant(attract attention because of their exuberance,confidence and stylishness)**
10. Avant Garde
11. Opulent

Details trims surface ornamentation

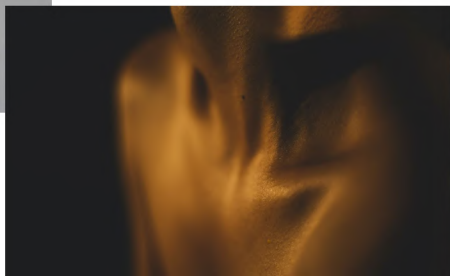
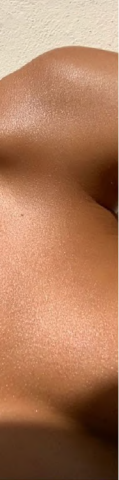
1. Embellished
2. Ornate
3. Experimental
4. Finesse
5. Sartorial
6. Bejeweled
7. Flamboyant

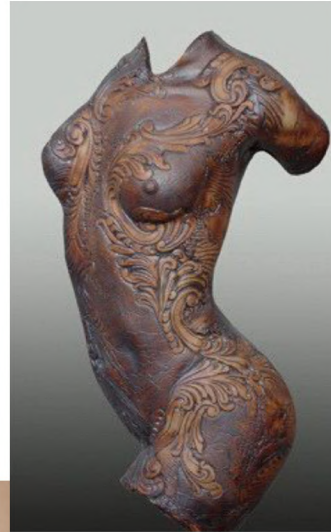
For Designer - Tarun Tahiliani



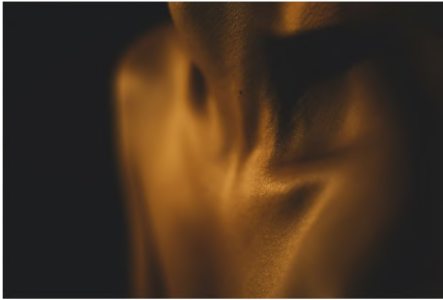
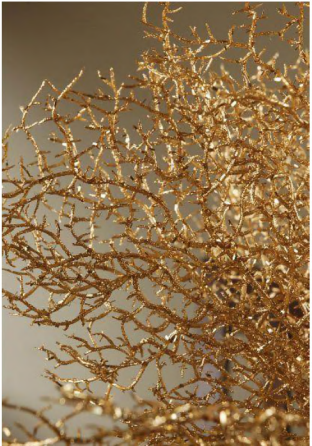
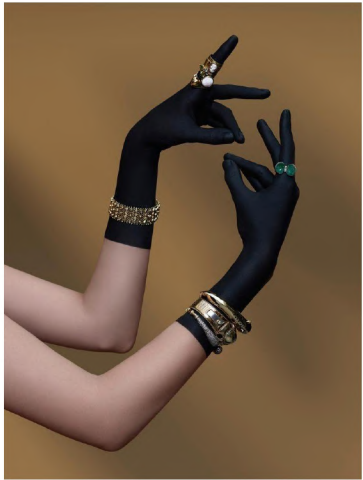


1. **Sentimental** - of or prompted by feelings of tenderness, sadness, or nostalgia. **MOOD**
2. Flamboyant - (of a person or their behaviour) tending to attract attention because of their exuberance, confidence, and stylishness.
3. Erotic - relating to or tending to arouse sexual desire or excitement.
4. **Sensual** - relating to or involving gratification of the senses and physical, especially sexual, pleasure. **MOOD**
5. Ornate - elaborately or highly decorated.
6. Radiant - sending out light; shining or glowing brightly.
7. **Clean Cut** - sharply outlined. (**silhouette**)
8. Diaphanous - (especially of fabric) light, delicate, and translucent.
9. Sophisticated - revealing/involving a great deal of worldly experience and knowledge of fashion and culture
10. Minimalistic - a person who advocates or practices minimalism
11. **Structured** - construct or arrange according to the plan, give a pattern or organization (**silhouette**)
12. **Bequest** - legacy **INSPIRATION**
13. **Sleek**- glistening, smooth- fabric texture
14. **Caressing**- (soft, bland, smooth)-fabric texture
15. Experimental - (of art or an artistic technique) involving a radically new and innovative style. (**silhouette/surface**)
16. Finesse - impressive delicacy and skill.
17. **Feminine** - having qualities or an appearance traditionally associated with women. **MOOD**
18. **Contemporary** - living or occurring at the same time. **INSPIRATION**
19. Versatile - able to adapt or be adapted to many different functions or activities.
20. Avant garde- introducing new and experimental ideas and methods (synonyms: innovative, trailblazing)
21. Modern - relating to the present or recent times as opposed to the remote past.
22. Meticulous- showing great attention to detail; very careful and precise
23. **Vivacious**- attractively lively (typically used of a woman. **MOOD**
24. **Ostentatious** - characterised by pretentious or showy display; designed to impress. (Synonyms: flamboyant, extravagant, gaudy, ornate) **MOOD**





Mood



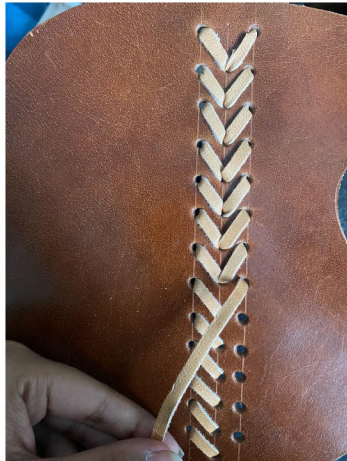
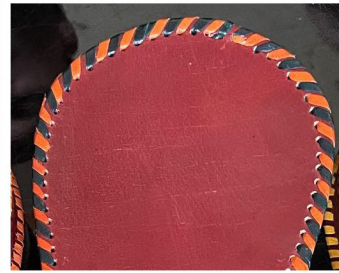
Inspiration

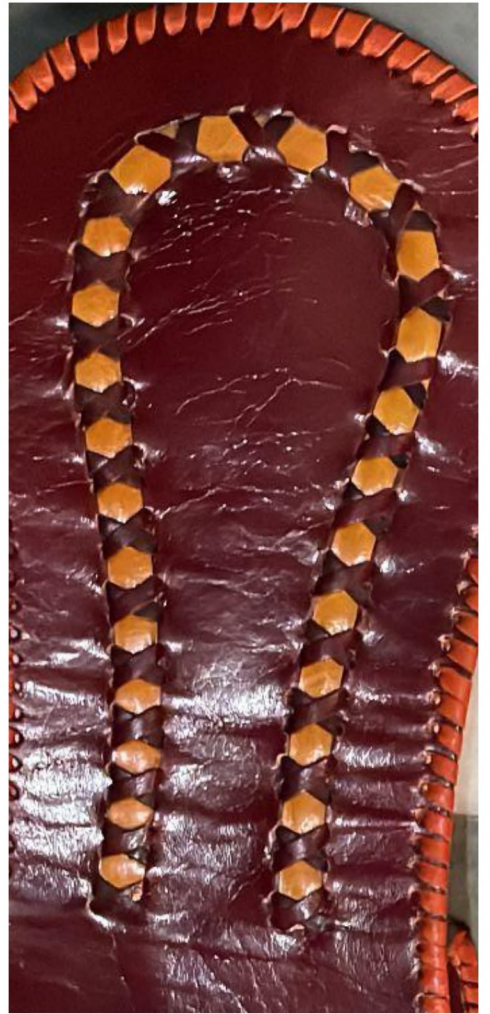


Silhouette structured



Details trims texture





#0A2A39



#0A2A39 


#40010D 

#3D1A18 

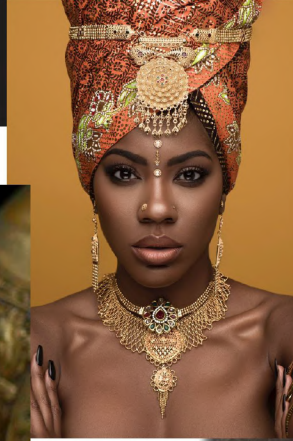
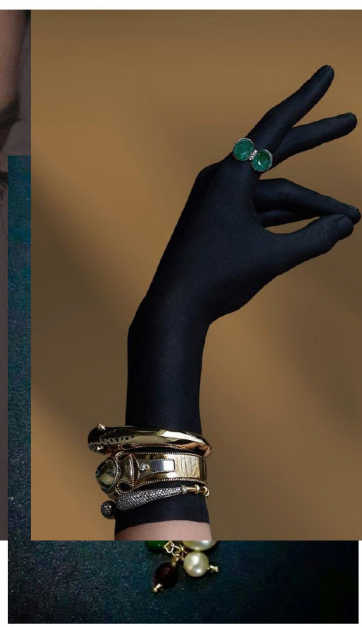
#



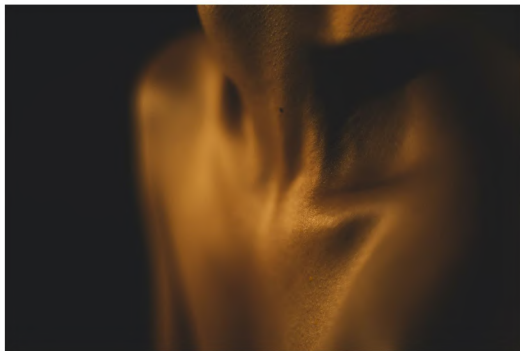
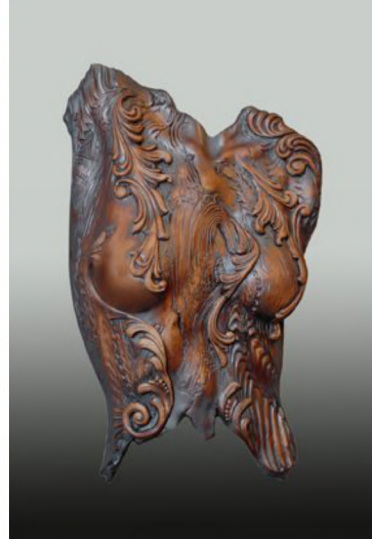
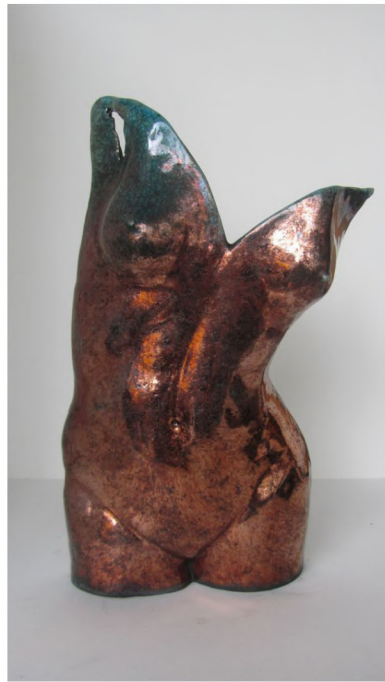
#402D22 

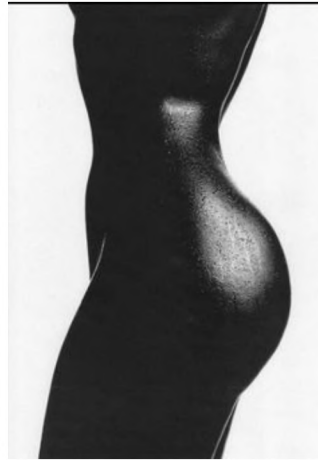
#B44D2E 

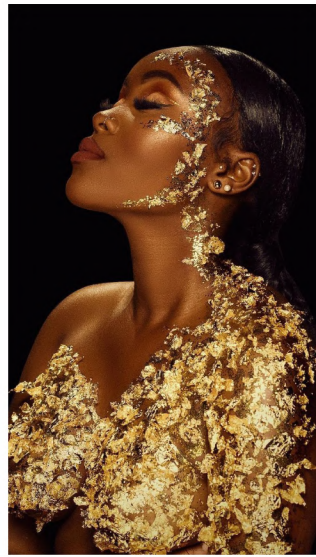
SENTIMENTAL



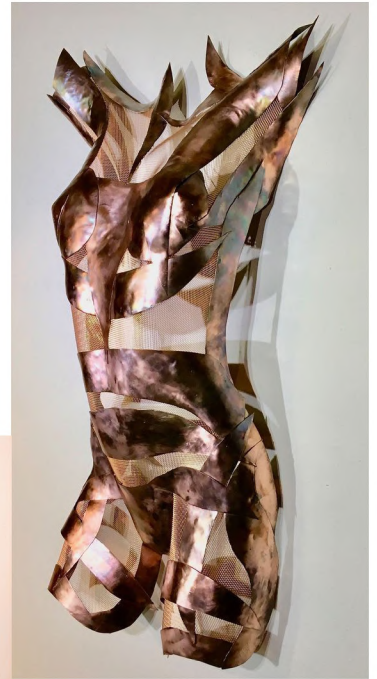
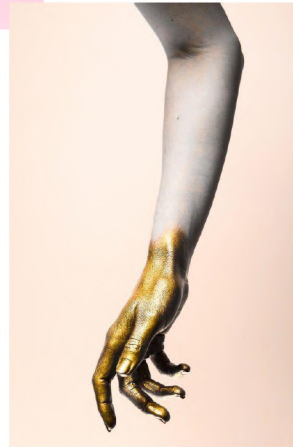
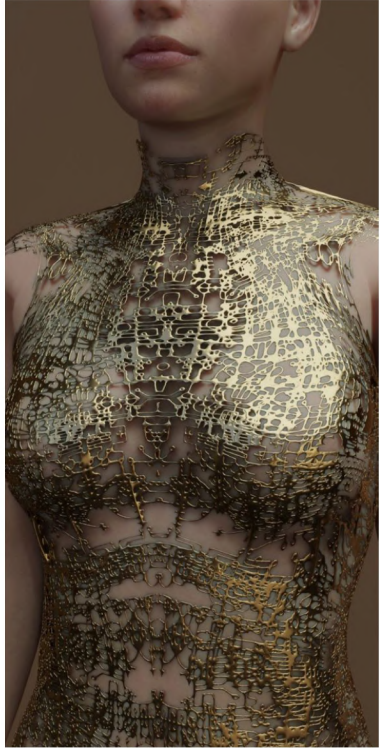
SENSUAL





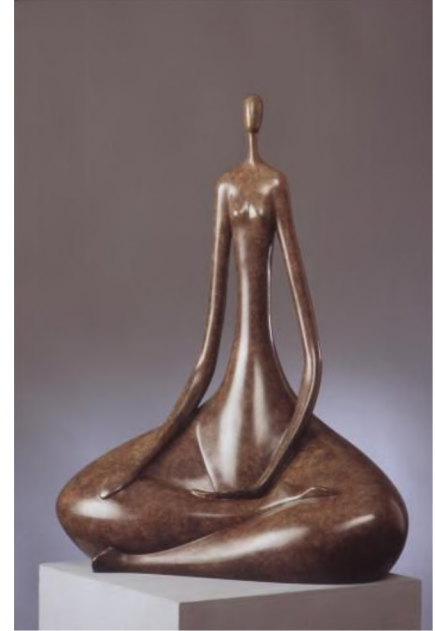


OSTENTATIOUS



SCULPTURED, CLEAN CUT, BODY FITTED

- to make figures or objects by **carving** or shaping wood, stone, **clay**, metal, etc.
- sculpt something to give something a particular shape



SLEEK / GLAZED



rick =



EARTHY TONES



Leather Craft mind map-words

1. Handcrafted
2. Dyed
3. Metal Tools (mogri,aari,pointer,prakar,phannar,silli,steel scale,navha,rapi,theпа)
4. Glue - Dudh / gondh
5. embellished
6. Surface ornamentation
7. Pattern making- xray sheets
8. Hammered - punching holes
9. Powder dye/ pigment
10. Machine/ hand Stitching
11. Zippers, Buttons
12. Mustard Oil - shine
13. Tanning
14. Finishes: Glazed - machine/by hand -glass used, edge painting
15. Precision
16. Exquisite craftsmanship
17. Skiving (method of shaving the edge)
18. embossing
19. moulding
20. Strong, Flexible,Durable, Soft- textures
21. Drying and Salting
22. Curing of leather

Choli mind map- words

1. Short sleeved- long sleeved, Midriff baring blouse
2. Intricate embroidery
3. Fine woven fabric
4. Unstitched fabric used in ancient times
5. Tight-fitting
6. Flap covering
7. Backless
8. Highly ornamented
9. Erotic/ Seductive
10. Intricate embroidery
11. Brassiere
12. Fastenings- knotting techniques
13. Upper garment- below breast ,above waist
14. Paired with - sari or lehenga
15. Deep necklines/Scooped neck
16. appliquéd with mirrors, tassels, beads, shells,
17. jari work, gota work
18. Dyed - vegetable dyes
19. Exquisite craftsmanship
20. Zardosi

1. Motifs- Traditional floral motifs, Stylized birds ,Auspicious motifs, Fertility symbols
2. Sensual
3. Resplendent
4. Sumptuous
5. Opulent
6. Lavish
7. Katori cups
8. Breast bands
9. Showed empowerment, and advancement of women
10. Kanchli- enhanced women's body
11. Geometrical shape (sleeve)
12. Material: Cotton, Silk, Satin, Brocade, Organza

Textures-Strong, Flexible,Durable,
Soft,

Metal Tools

Pattern making- xray sheets

Coarse

Embellishments

Curing of leather

Handcrafted

Powder dye/ pigment

Leather

Precision

Glue - Dudh / gondh

Surface ornamentation

.....
LEATHER CRAFT DOCUMENTATION
.....

Hammered - punching holes

Tanning

Drying and Salting

Mustard Oil - shine

Embossing

Machine/ hand Stitching

Zippers, Buttons

Moulding

Exquisite craftsmanship

Skiving (method of shaving the edge)

**Finishes: Glazed - machine/by
hand -glass used, edge painting**

Upper garment

Katri cups

Clean cut

Lavish

Fine woven fabric

Opulent

Brassière

Deep neck / scooped neck

Intricate embroidery

Erotic / Seductive

Fastened by knotting techniques

CHOLI

Unstitched fabric used in ancient times

Tight-fitting

Highly ornamented: Applied with mirrors, tassels, beads, shells, jari work, gota work, zardozi

Motifs: Traditional, stylized birds, auspicious motifs, fertility symbols

Flap covering

Vegetable Dyes used

Backless

Sensual

Brocade

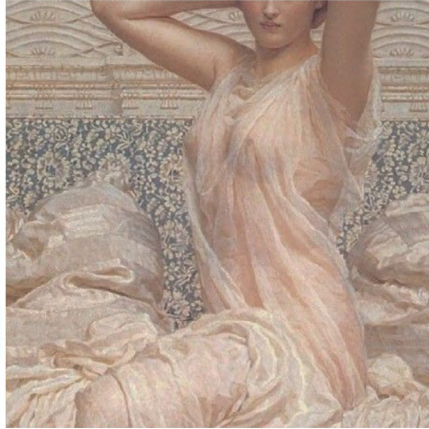
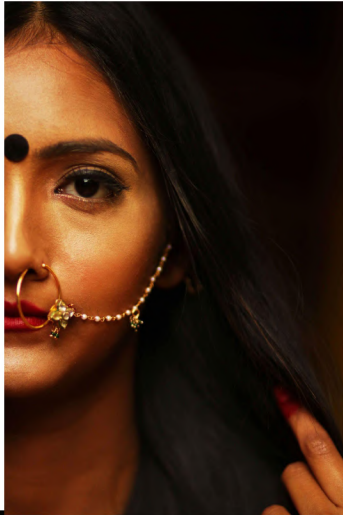
Sumptuous

Material : cotton, silk, satin, organza

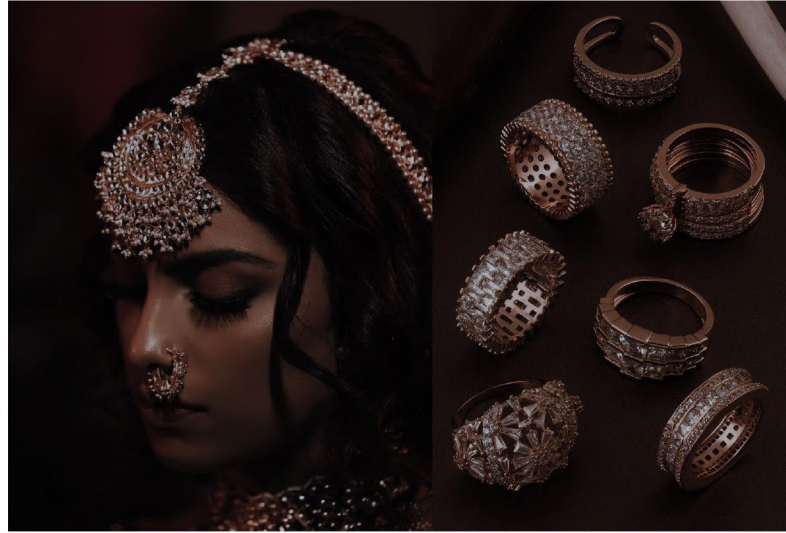


Final sensual Images

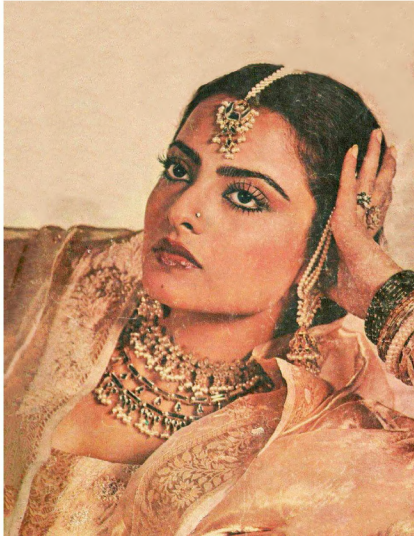
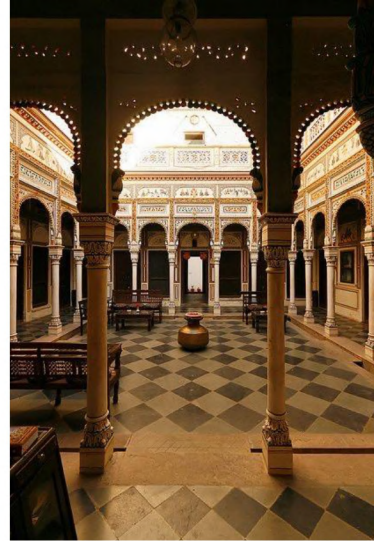
Feminine

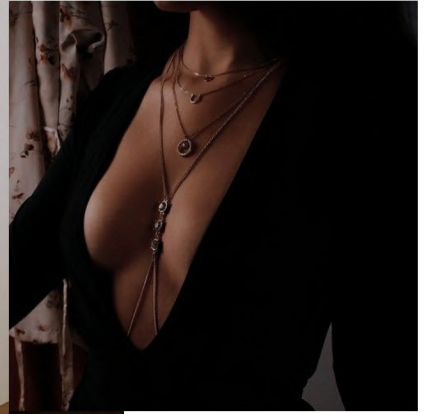


Sentimental/ Nostalgia



Final-Sentimental Images



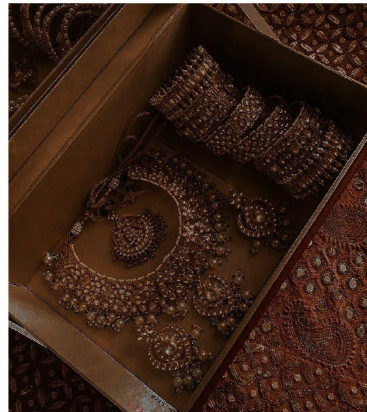


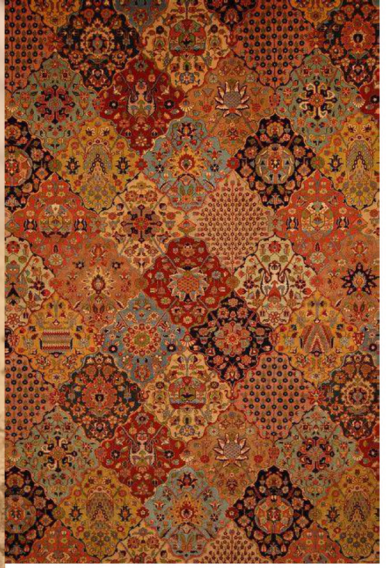
SENSUAL

Bequest



Ostentatious





Final Vivacious Images



Links for choli ref

- [blouse | British Museum](#)
- [Short embroidered 'choli' \(blouse\), mid 20th century-late 20th century :: | Art Gallery of NSW](#)
- ['Casual' choli \(blouse\) worn by queen, late 19th century :: | Art Gallery of NSW](#)
- [Mirror work 'choli' \(blouse\), 20th century :: | Art Gallery of NSW](#)
- [Choli \(Blouse\) — Google Arts & Culture](#)
- [Blouse — Google Arts & Culture](#)
- [marriage blouse \(chola\) — Google Arts & Culture](#)
- [Blouse with Figures and Sceneries — Google Arts & Culture](#)
- http://www.fashionencyclopedia.com/fashion_culture/The-Ancient-World-India/Choli.html
- https://wikimili.com/en/Gagra_choli
- <http://traditionalclothingindia.blogspot.com/2014/06/kanchi-traditional-rajasthani-costume.html>

- Choli

- http://www.fashionencyclopedia.com/fashion_costume_culture/The-Ancient-World-India/Choli.html
- https://wikimili.com/en/Gagra_choli
- <http://traditionalclothingindia.blogspot.com/2014/06/kanchli-traditional-rajasthani-costume.html>
-