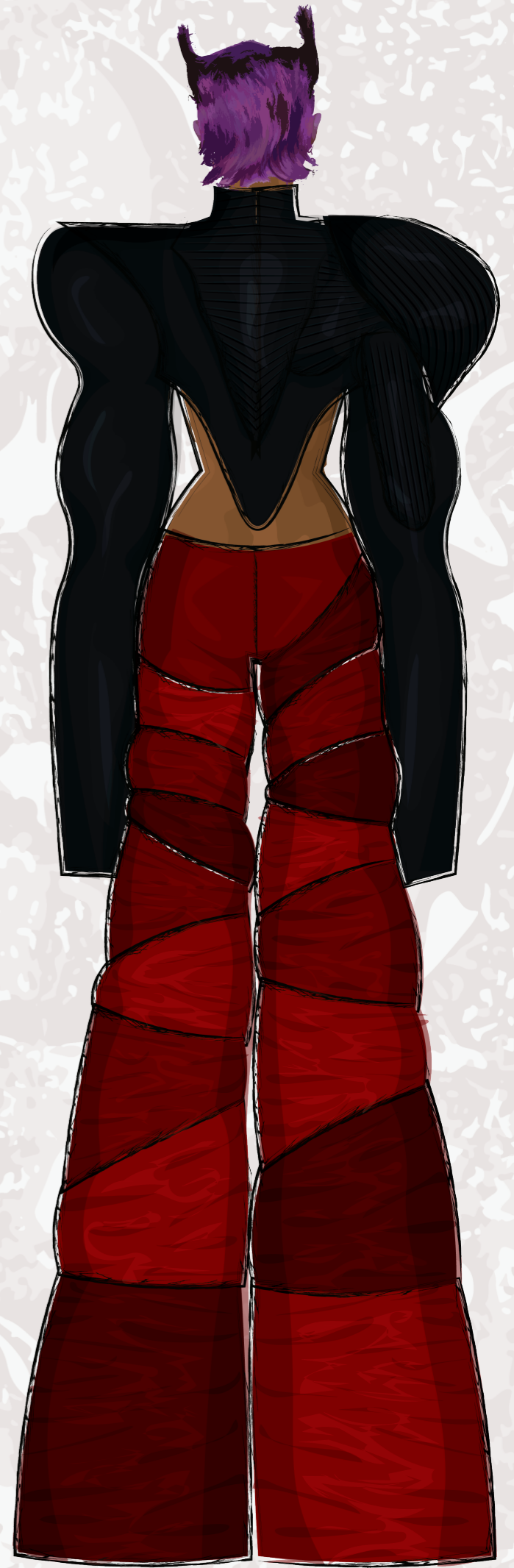
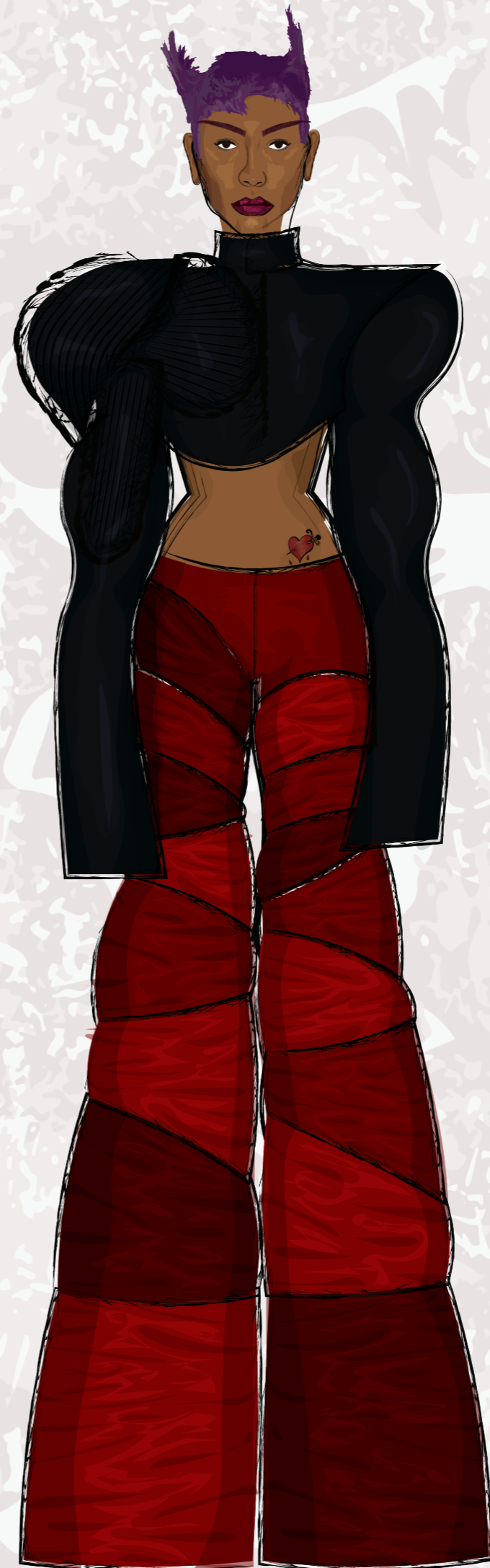
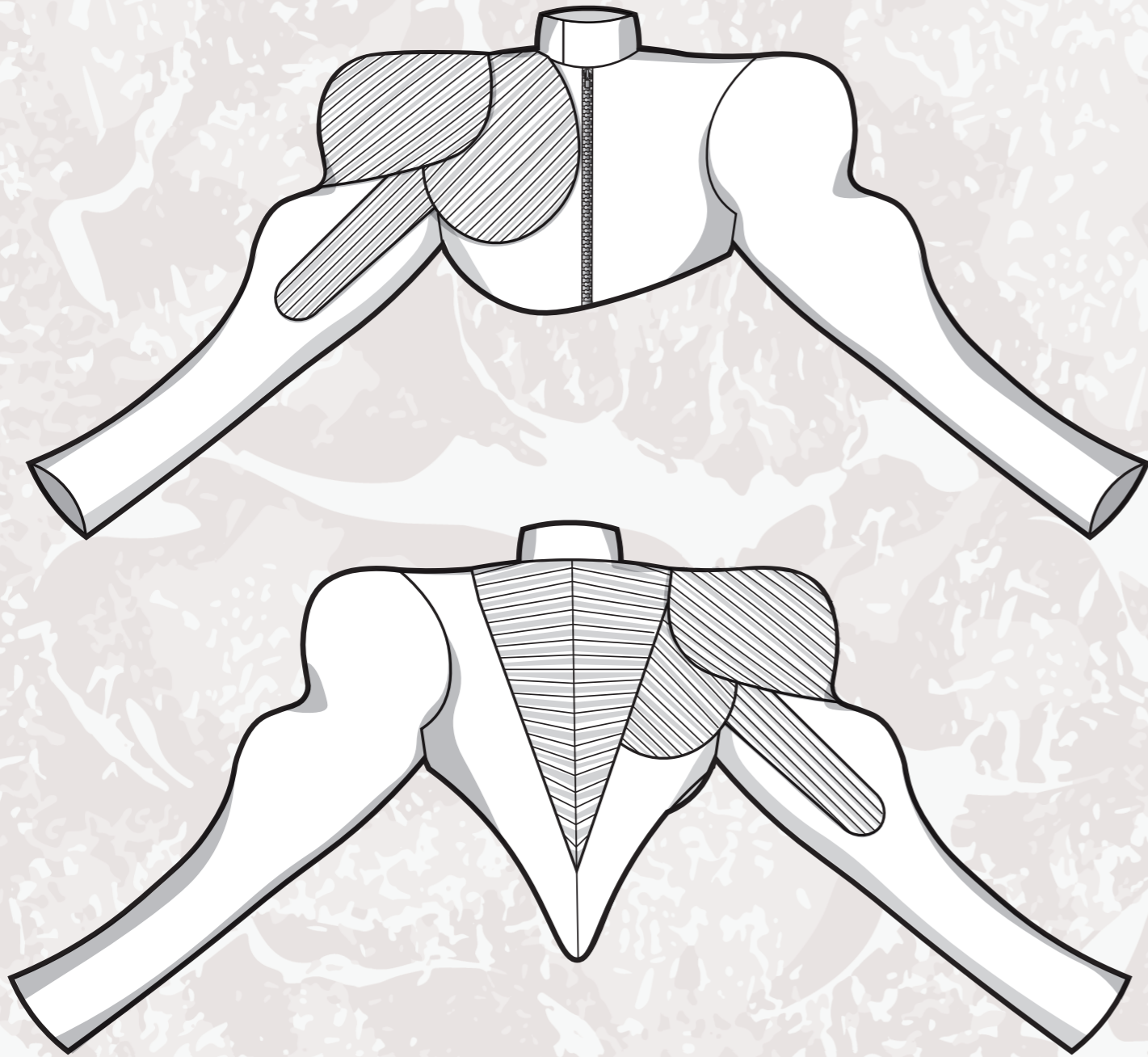


TRANSEASONAL '23/ '24

EATER

# EATER

TRANSEASONAL '23/24



# EATER

TRANSEASONAL '23/24

## TOP LAYER

### CONSTRUCTION

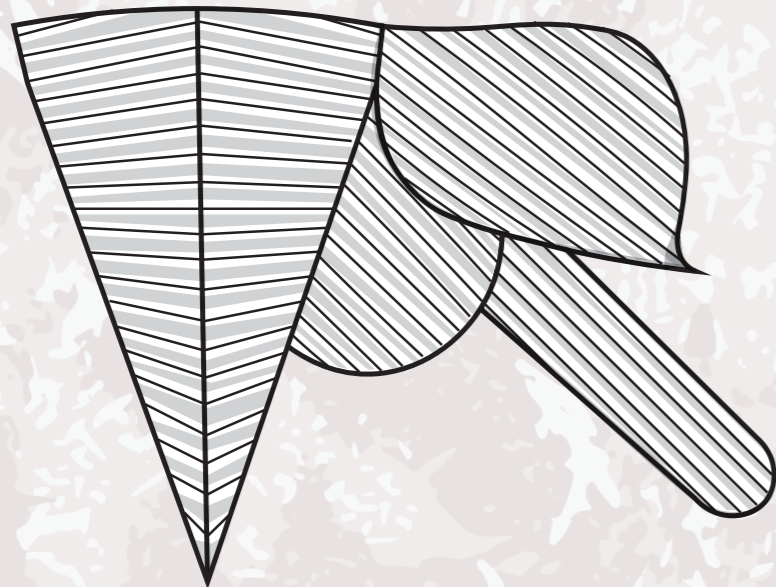
FRONT

- 1CM PINTUCKS WITH 1.5CM GAP



BACK

- 1CM PINTUCKS WITH 1.5CM GAP
- 40CM LONG CB
- CB CURVED FROM NECKLINE FOR 35CM



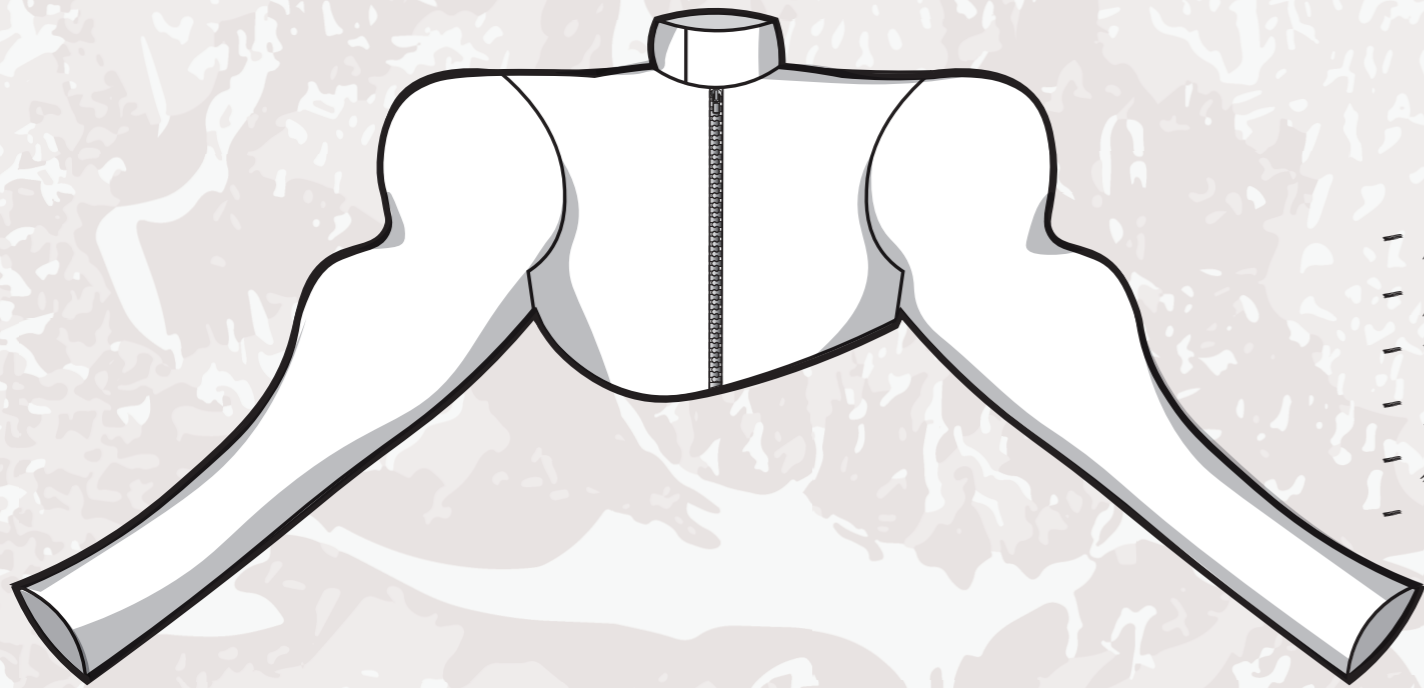
# EATER

TRANSEASONAL '23/24

## BOTTOM LAYER

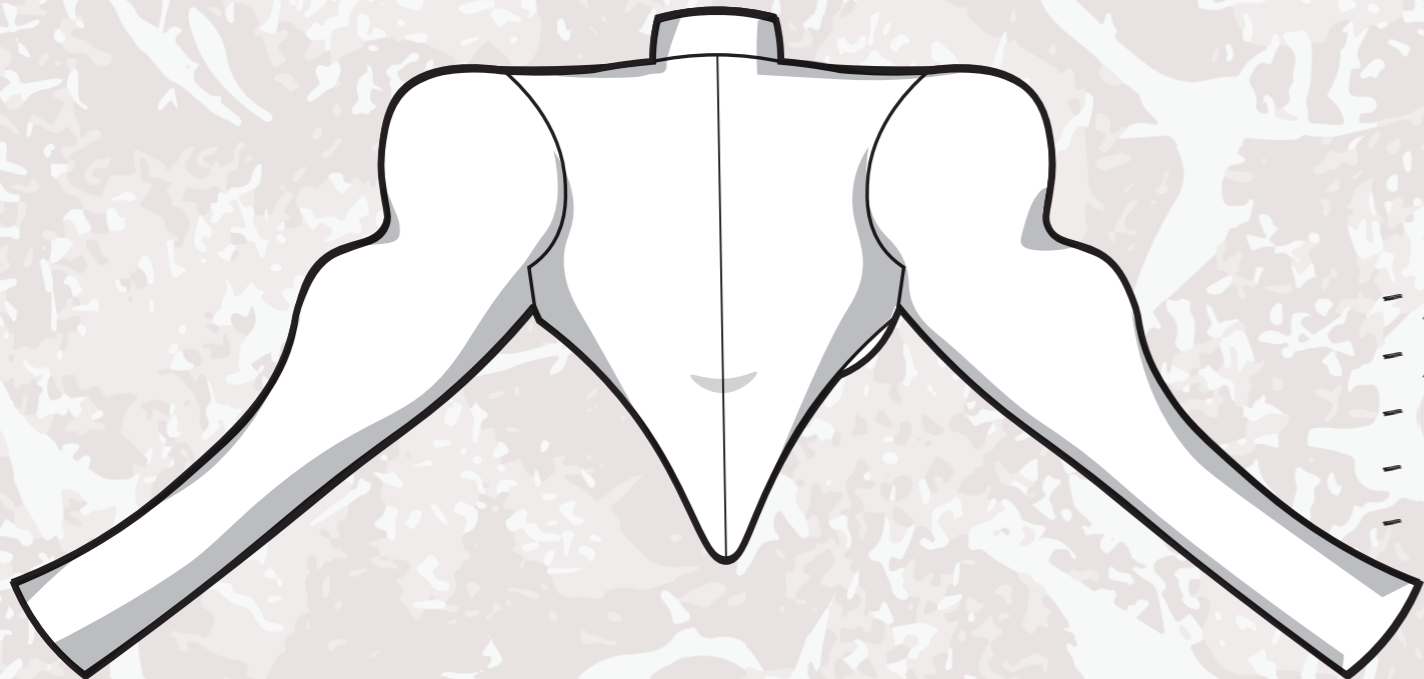
### CONSTRUCTION

#### FRONT

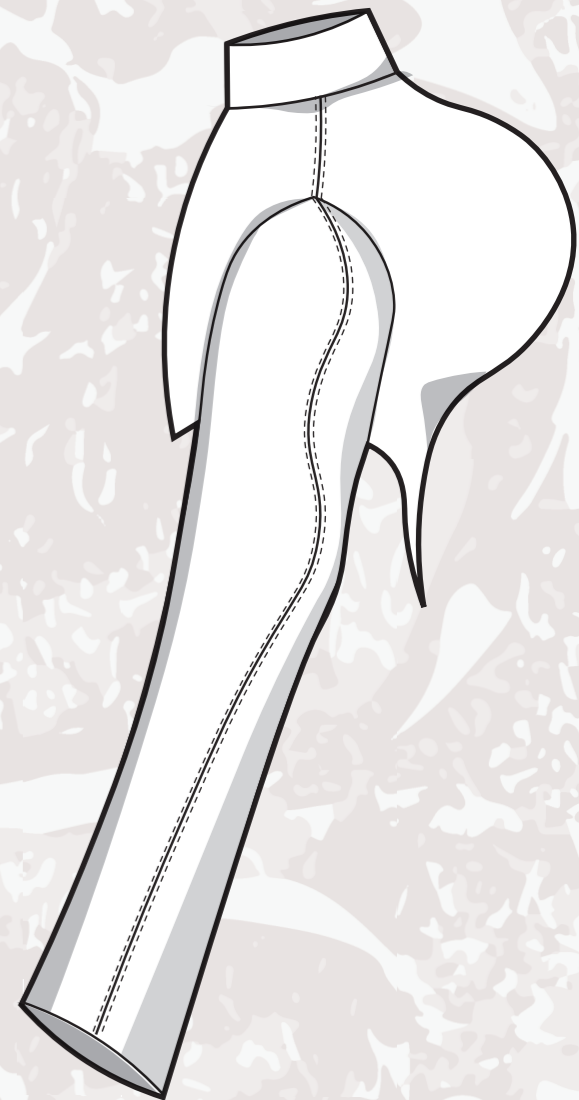


- 10CM RAISED MANDARIN COLLAR WITH 5CM OVERLAP
- 1CM PINTUCKS WITH 1.5CM GAP
- FULLY LINED
- 30CM SILVER METAL ZIP
- 7CM EXTENDED SLEEVES
- 4CM HEM

#### BACK

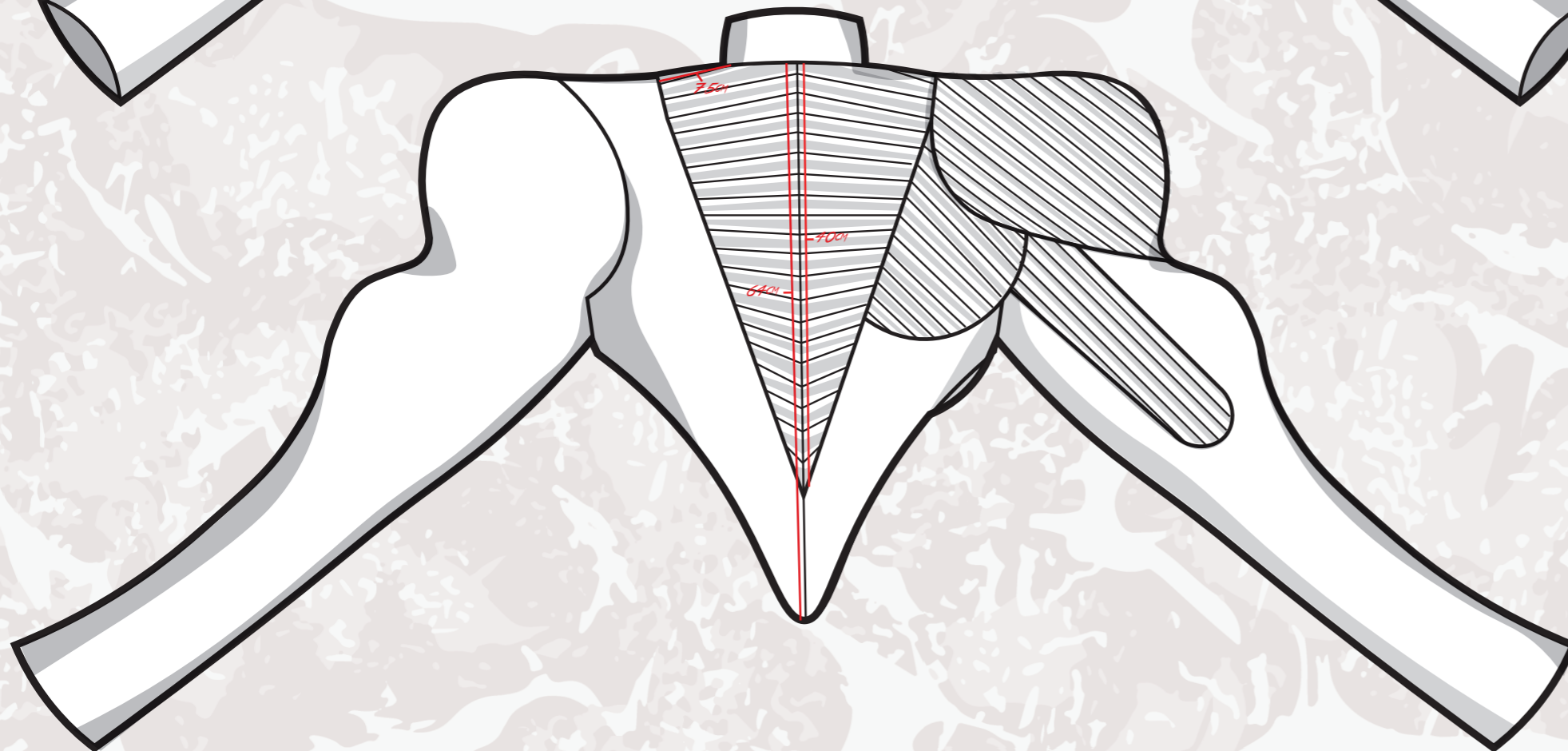
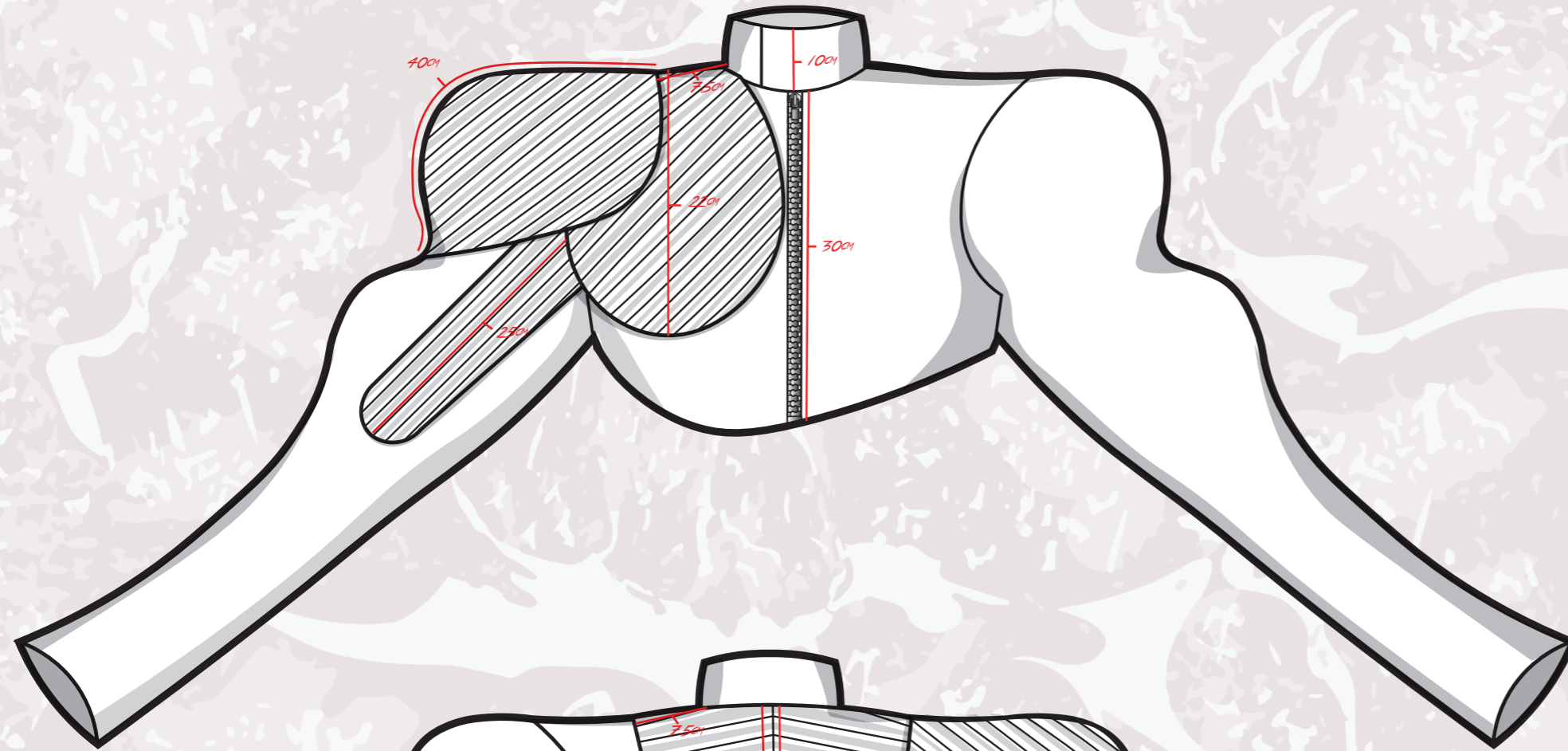


- 10CM RAISED MANDARIN COLLAR WITH 5CM OVERLAP
- 1CM PINTUCKS WITH 1.5CM GAP
- CB CURVED FROM 7CM BELOW NECKLINE FOR 35CM
- CB 64CM LONG
- 4CM HEM



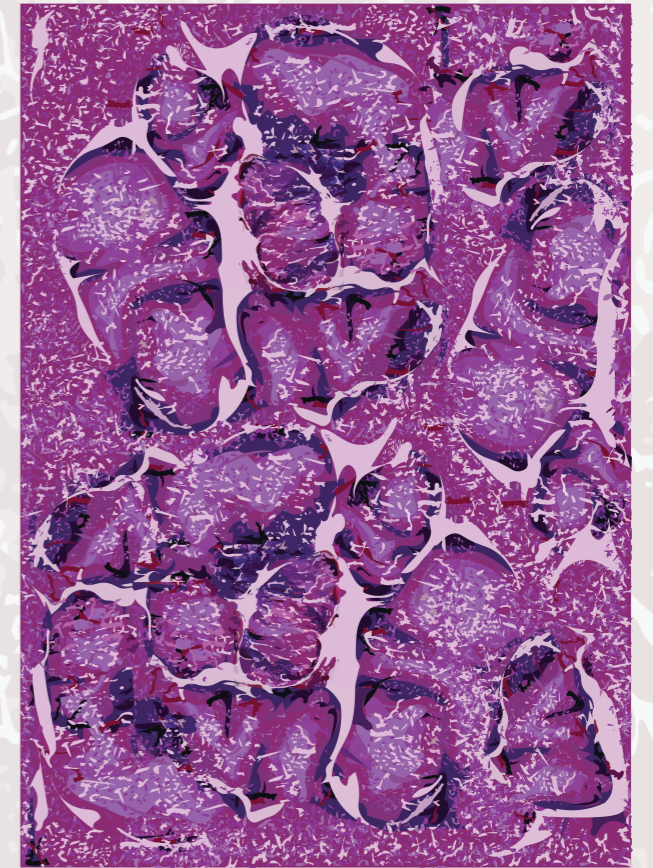
# EATER

TRANSEASONAL '23/24



FABRIC:

JACKET- BLACK BOVINE GENUINE  
LEATHER  
LINING- SATIN TWIST WITH MEAT  
PRINT



MEAT PRINT

FAIR