

A bouquet of pink flowers, possibly peonies, is centered in the image. The flowers are in various stages of bloom, with some showing multiple layers of petals. The stems are visible at the top. A red text overlay is positioned over the middle of the bouquet.

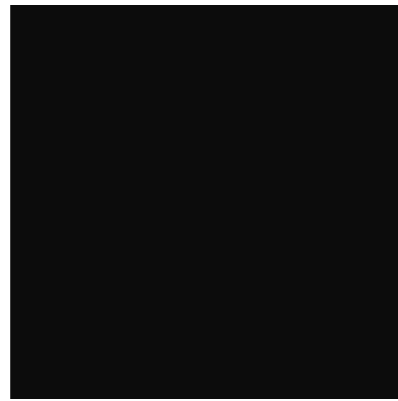
REAL

LEATHER.

STAY

DIFFERENT.

COLOUR PALETTE



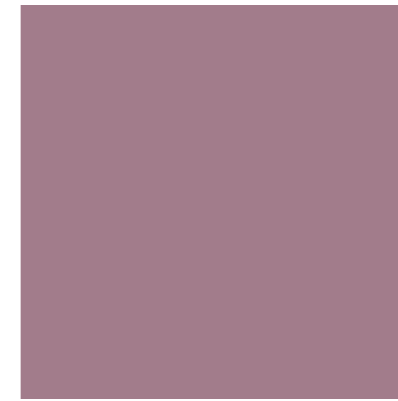
0c0c0c



8d0e4b



c61a45



a27c8b



e69772



8b095



b7d21f

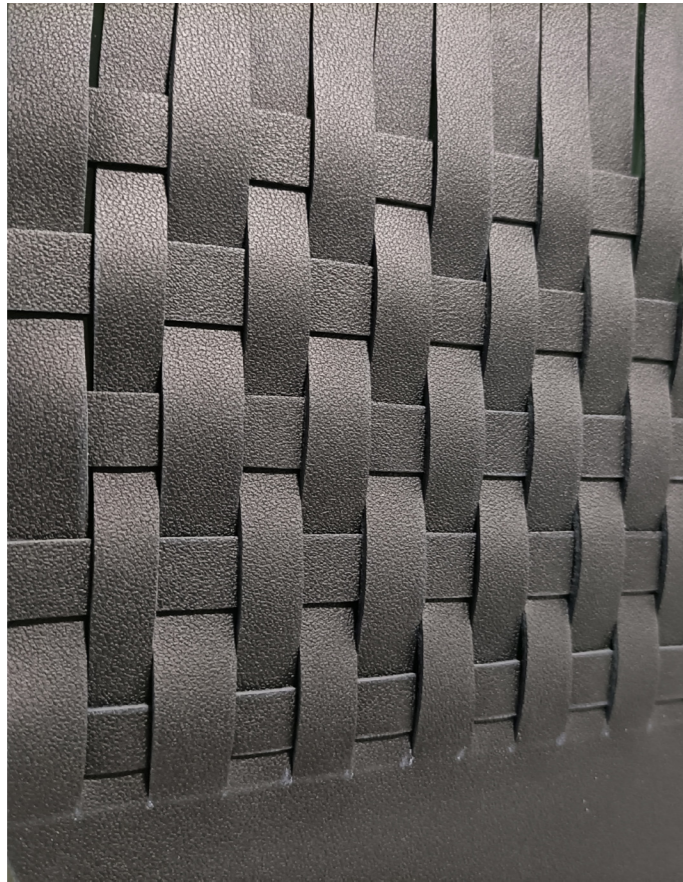


dba515

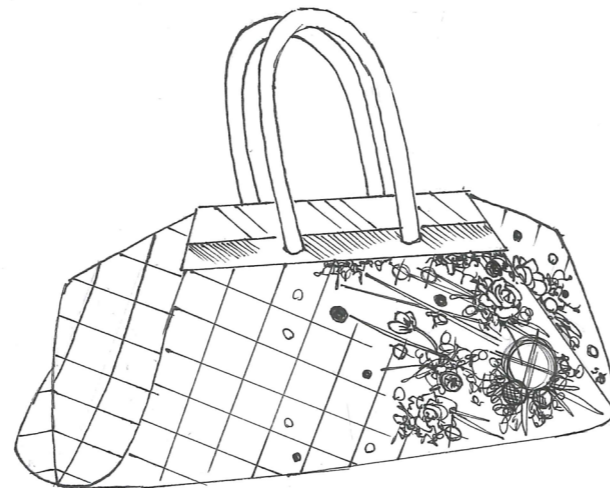
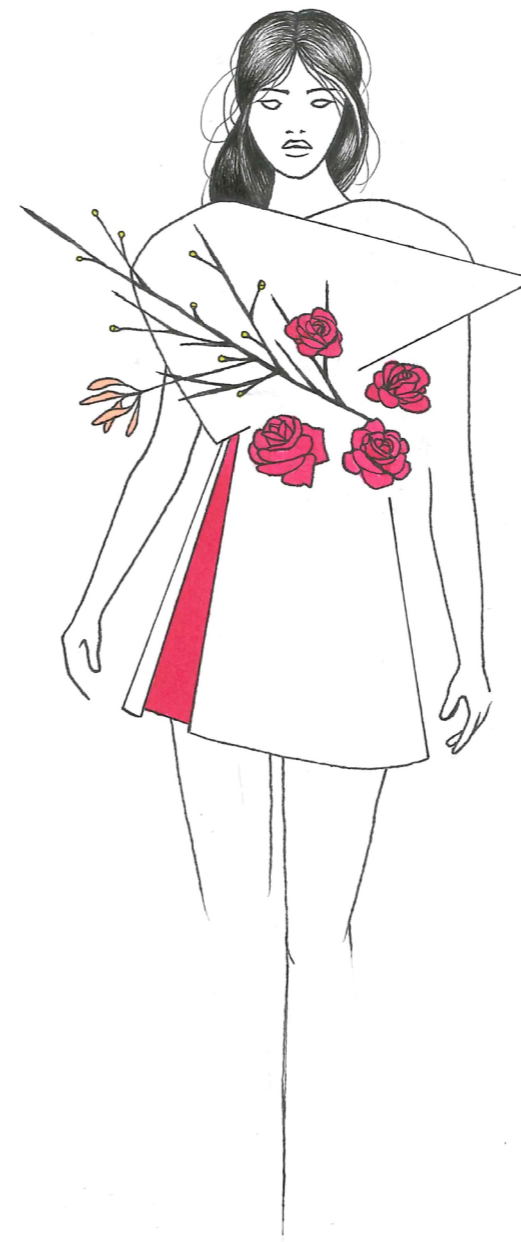
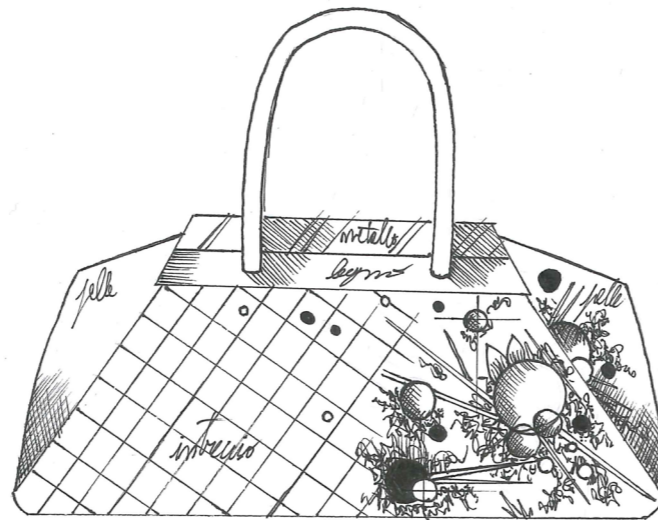
Leather can't harm the planet, it returns to the earth without polluting it and nothing of the animal from which it comes is wasted. Leather is alive, resistant and unique, any garment or accessory of this material allows you to celebrate its richness and elevate it to a higher level.

PROCESSING EXAMPLES

Interweaving with calf leather



SKETCHES AND INSPIRATION



FABBY BAG

The bag features alternating stripes of recycled leather and smooth leather.

The recovered leather section is worked with the interweaving technique, while the smooth section is enriched with hand-painted floral elements.

This choice embodies the concepts of leather's life, make coexist the part of recycling with the new part, to avoid waste and enhance nature (represented by flowers).

All this creates a rhythm of colours, shapes and sensations.

The cowhide handle is supported externally, starting from a section in wood and shiny metal, which reinforce the hem of the bag, providing a point of light.



THANKS

**REAL
LEATHER.
STAY
DIFFERENT.**