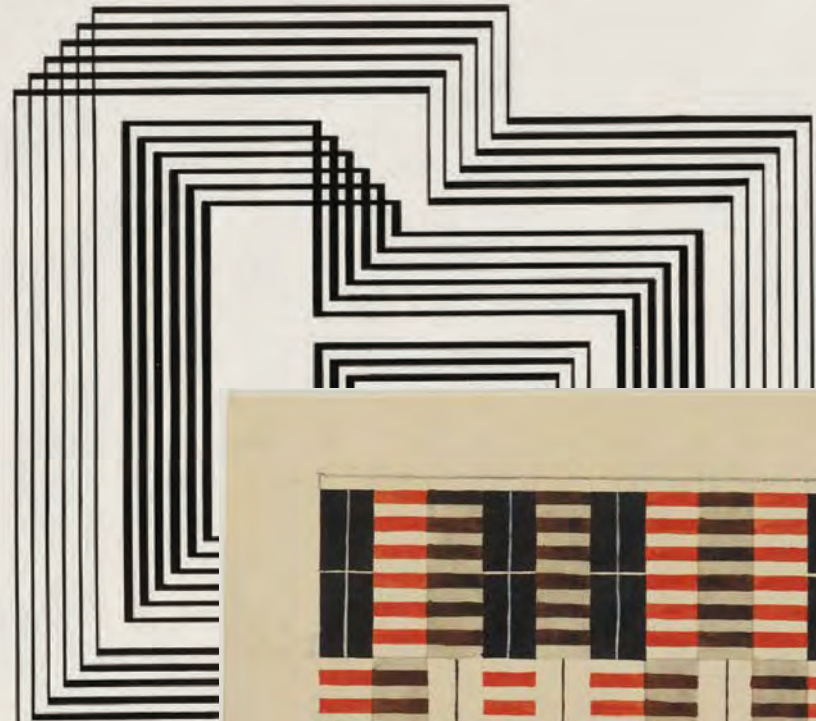


Beyond Bauhaus

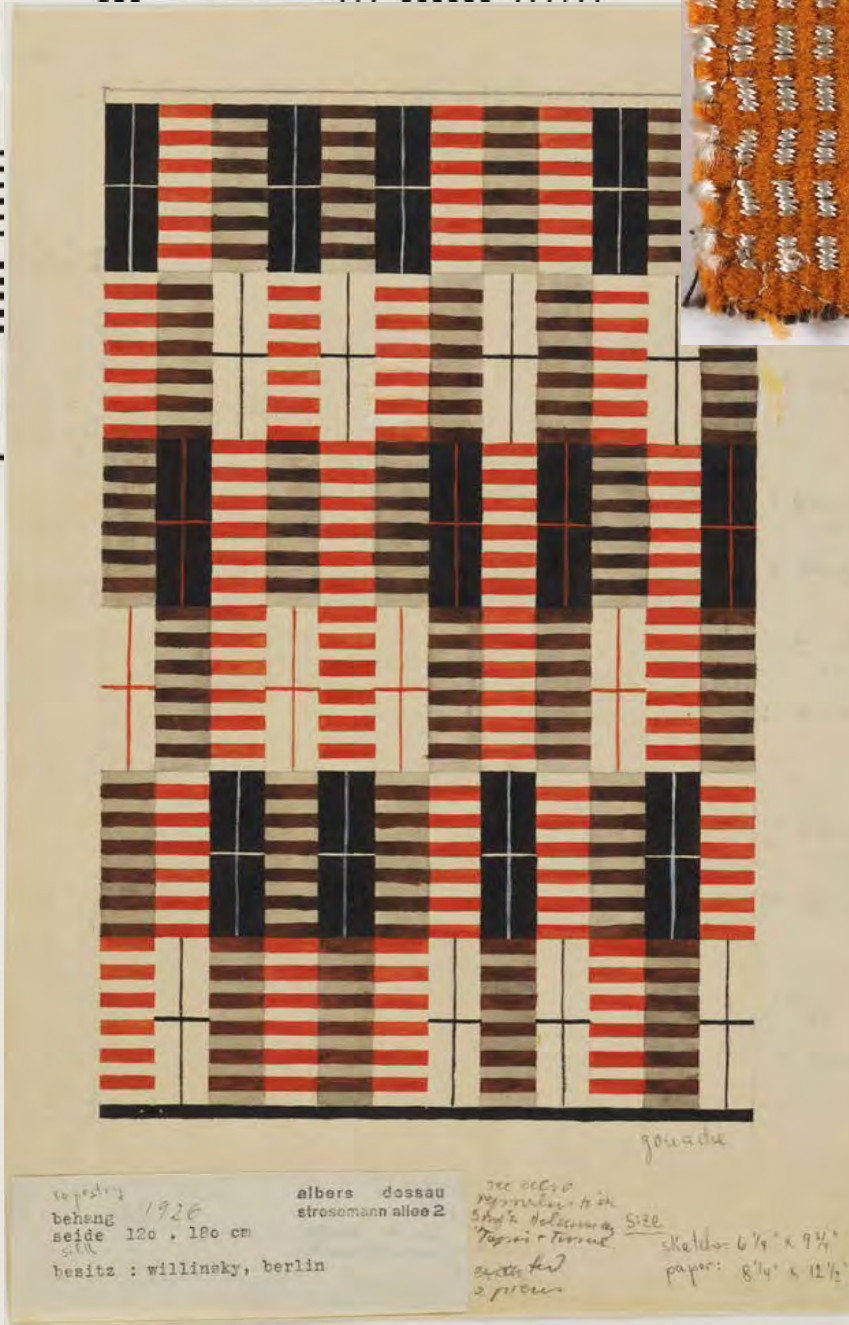
HANDCRAFTED FOOTWEAR
FOR THE MODERN WOMAN



SONIA DELAUNAY



JOSEF & ANNI ALBERS



albers dossau
stroschmann allee 2
1928
behang
seide 120 x 180 cm
besitz : willinsky, berlin

see also
reproduction in
Stijl, Hulsman,
Tegoni + Torsini
sketches: 6 7/8" x 9 1/4"
paper: 8 1/4" x 12 1/2"

gouache



ich (wir) bestelle..... hiermit bis auf Widerruf die vierteljährlich erscheinende Zeitschrift

bauhaus Zeitschrift für Bau und Gestaltung
zum Preise von 4,- Rmk. pro Jahr auf Grund nachstehender

bezugs- und zahlungsbedingungen:
Abonnements haben Geltung bis Ende des laufenden Kalenderjahres. Nicht bis 30 Tage vor Ablauf des laufenden Kalenderjahres schriftlich beim Verlage gekündigte Abonnements gelten als um das nächste Kalenderjahr verlängert. Erteilte Rechnungen sind so zeitig zu begleichen, daß der Verlag spätestens 8 Tage vor Rechnungsdatum über die Rechnungsbeträge verfügen kann. Überfällige Forderungen erhöhen sich um Mahn- und Inkassospesen. Ausfall der Zeitschriftenlieferung ohne Verschulden des Verlages (Streik, höhere Gewalt etc.) berechtigt nicht zum Verlangen nach Minderung des Bezugspreises oder Schadenersatzleistung. Erfüllungsort und Gerichtsstand für beide Teile ist Dessau.

der Bezugspreis für das Abonnement der zu liefernden Zeitschrift soll **per Nachnahme** mit der ersten Nummer eingezogen werden **in Rechnung** gestellt werden.

Tschichold 11/30

name und stand
wohnort
straße u. hausnummer datum

https://www.moma.org/collection/works/37552?artist_id=96&page=1&sov_referrer=artist
<https://www.moma.org/collection/works/2006>
<https://www.moma.org/collection/works/65877>
<https://www.moma.org/collection/works/7644>
<https://www.pinterest.com/pin/260575528431187411/>
<https://www.pinterest.com/pin/260575528431190006/>
<https://www.pinterest.com/pin/2605755284311874227/>
<https://www.moma.org/collection/works/83782>



Customer Profile

Demographics: Women ages 18-35

Location: North America, Europe

Occupation: Student, creative industry, corporate position

Style: feminine, detail-oriented, color blocking, simple sophistication

Favorite Brands: Local and small businesses, Anthropologie, Zara, Mate the Label, Reformation

Hobbies: Hiking, traveling, knitting sweaters, yoga, gardening, decorating

Avg. \$/Footwear Purchase: \$150-250/pair

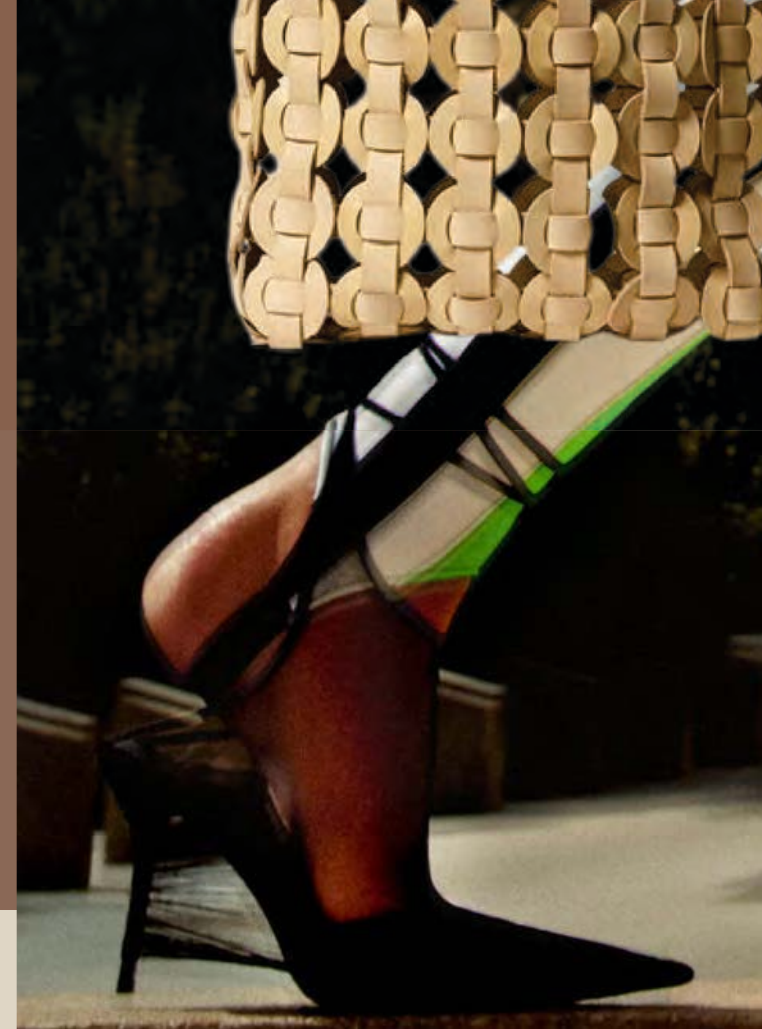


WWW.WGSN.COM/CONTENT/IMAGE_VIEWER/#/IMAGE:35106249
WWW.WGSN.COM/CONTENT/IMAGE_VIEWER/#/IMAGE:35420031
WWW.WGSN.COM/CONTENT/IMAGE_VIEWER/#/IMAGE:35196923
HTTPS://WWW.WGSN.COM/FASHION/ARTICLE/93203
WWW.WGSN.COM/CONTENT/IMAGE_VIEWER/#/IMAGE:35106234

Footwear, Accessories & Jewelry Materials Forecast

A/W 23/24: Hardware & Details

SUBVERSIVE
CUTOUT



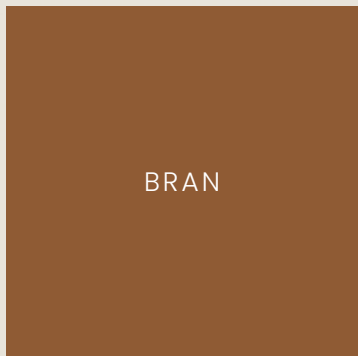
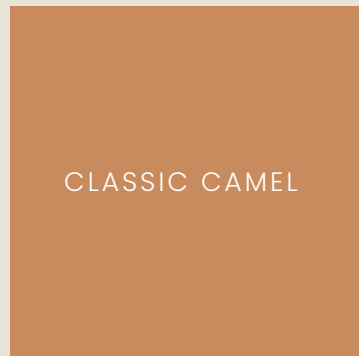
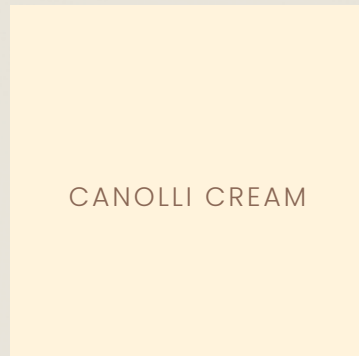
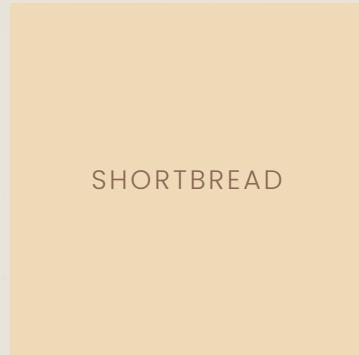
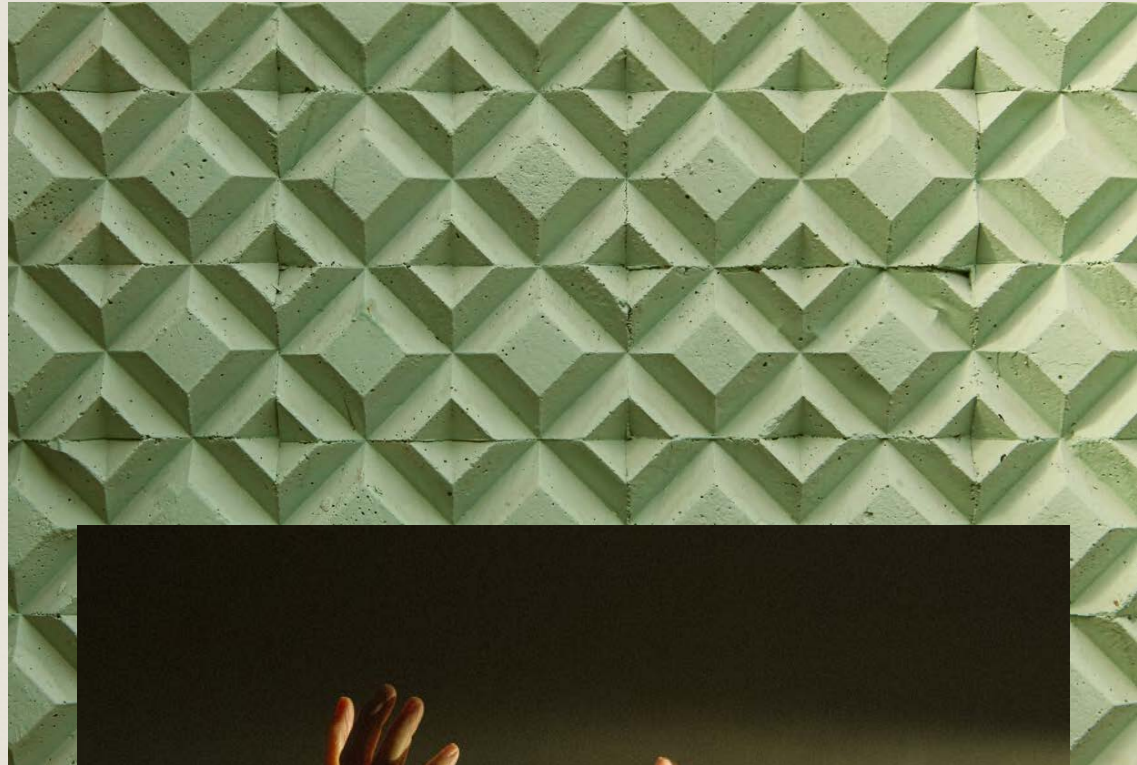
ELEVATED MODULARITY

SUPER STITCH

[WWW.WGSN.COM/CONTENT/IMAGE_VIEWER/#/IMAGE.33662091](https://www.wgsn.com/content/image_viewer/#/image.33662091)
[HTTPS://WWW.PINTEREST.COM/PIN/260575528431190004/](https://www.pinterest.com/pin/260575528431190004/)
[HTTPS://WWW.PINTEREST.COM/PIN/431571576801441260/](https://www.pinterest.com/pin/431571576801441260/)
[HTTPS://WWW.PINTEREST.COM/PIN/260575528430941889/](https://www.pinterest.com/pin/260575528430941889/)
[HTTPS://WWW.PINTEREST.COM/PIN/75576099983446414/](https://www.pinterest.com/pin/75576099983446414/)
[WWW.WGSN.COM/CONTENT/IMAGE_VIEWER/#/IMAGE.35136446](https://www.wgsn.com/content/image_viewer/#/image.35136446)
[HTTPS://WWW.PINTEREST.COM/PIN/260575528431180875/](https://www.pinterest.com/pin/260575528431180875/)

Earthy Neutrals

A/W 22/23



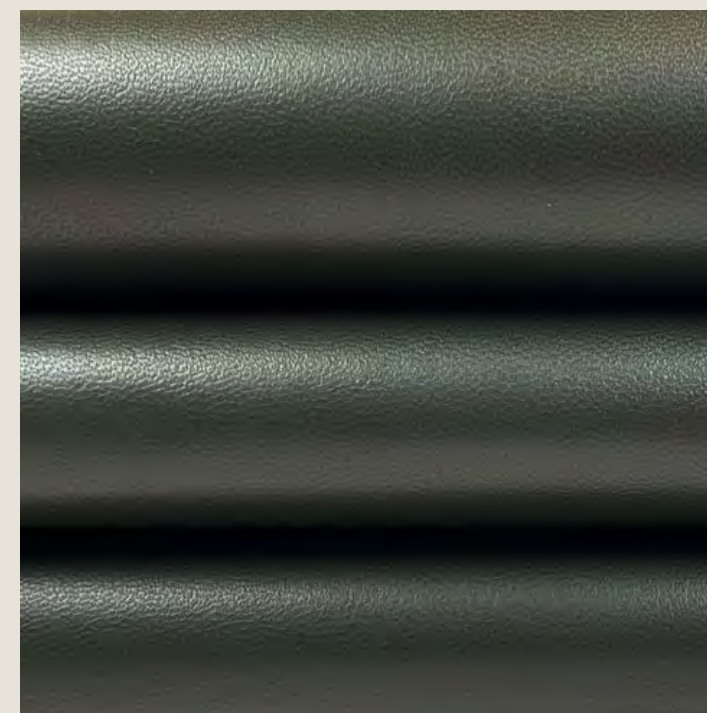
[HTTPS://WWW.INSTAGRAM.COM/P/BVRUJYJQ8E/](https://www.instagram.com/p/BVRUJYJQ8E/)
[HTTPS://WWW.COLOURBEAUTIFULTHINGS.CO.UK/](https://www.colourbeautifultthings.co.uk/) ANNI-ALBERS-
PIONEERING-TEXTILE-ARTIST-AND-PRINTMAKER/
WWW.WGSN.COM/CONTENT/IMAGE_VIEWER/#/IMAGE_34971434
WWW.WGSN.COM/CONTENT/IMAGE_VIEWER/#/IMAGE_35083954
WWW.WGSN.COM/CONTENT/IMAGE_VIEWER/#/IMAGE_34739168



[HTTPS://WWW.LEATHER-AA.COM](https://www.leather-aa.com)



NAME: CHIVE
MATERIAL: SMOOTH LAMBSKIN LEATHER
PANTONE: 19-0323 TPG
THICKNESS: 0.8 MM/2 OZ



NAME: KOMBU GREEN
MATERIAL: SMOOTH LAMBSKIN LEATHER
PANTONE: 19-0417 TPG
THICKNESS: 0.9 MM/2.25 OZ



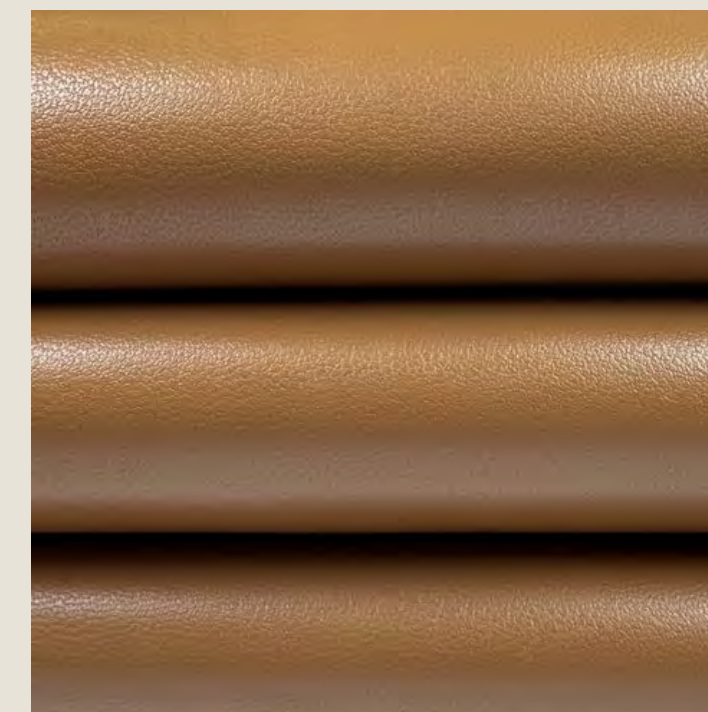
NAME: CANNOLI CREAM
MATERIAL: SMOOTH LAMBSKIN LEATHER
PANTONE: 11-4302 TPG
THICKNESS: 0.9-1.0 MM/2.25-2.5 OZ



NAME: SHORBREAD
MATERIAL: SMOOTH LAMBSKIN LEATHER
PANTONE: 12-0710 TPG
THICKNESS: 0.8 MM/2.0 OZ



NAME: CLASSIC CAMEL
MATERIAL: LAMBSKIN SUEDE LEATHER
PANTONE: 16-1310 TPG
THICKNESS: 0.9 MM/2.25 OZ



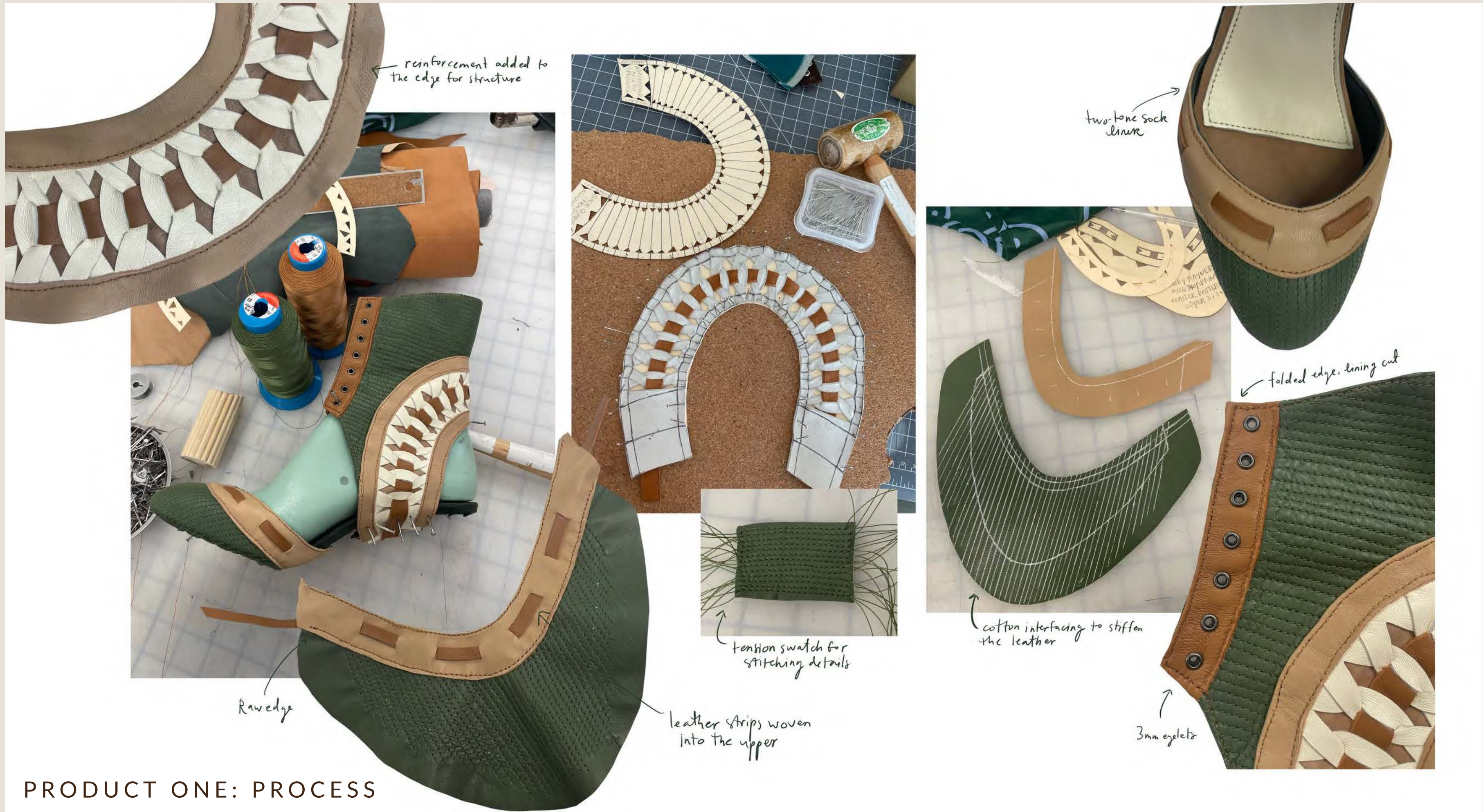
NAME: BRAN
MATERIAL: SMOOTH LAMBSKIN LEATHER
PANTONE: 17-1336 TPG
THICKNESS: 1.0 MM/2.5 OZ



INITIAL SKETCHES



PRODUCT ONE: IDEATION



reinforcement added to the edge for structure

Raw edge

leather strips woven into the upper

tension swatch for stitching details

two-tone sock lining

cotton interfacing to stiffen the leather

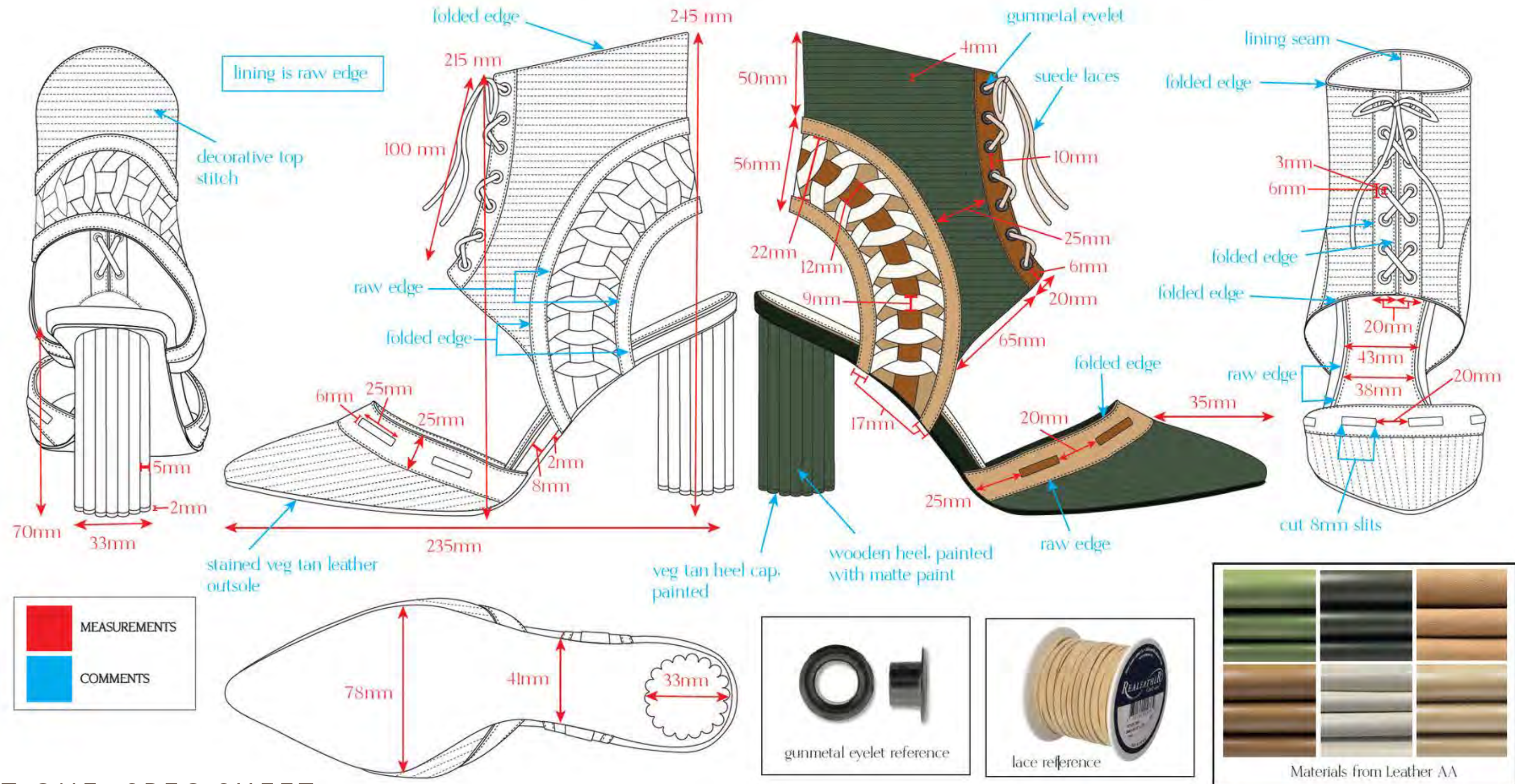
folded edge, lining cut

3mm eyelets

PRODUCT ONE: PROCESS

this document must not be copied or used in any way without written permission from abigail rayner

STYLE NO. 1
last EAC 7655 / 7C







PRODUCT TWO: IDEATION



fitting the elastic strap on the last

pieces adhered to the Green Background + stitched around outer edge



stitching around the edge

two layer sock liner



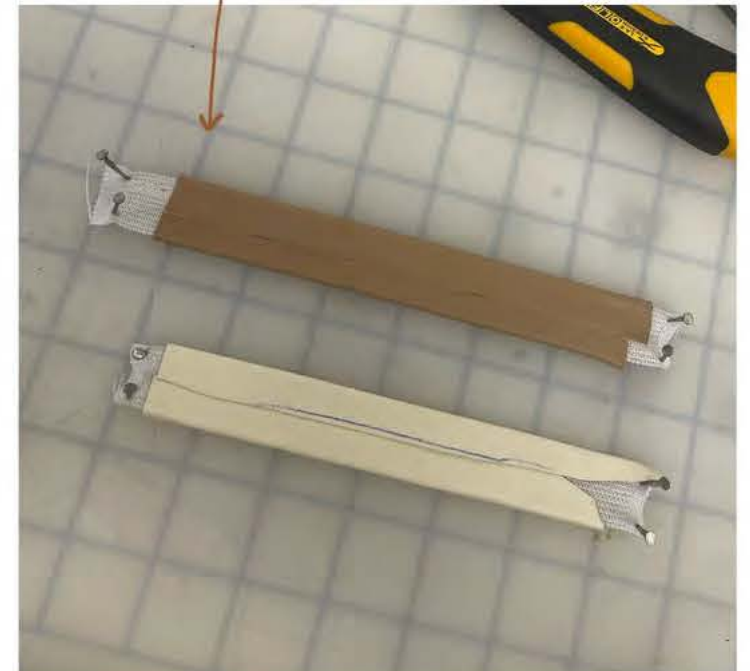
4mm stitch spacing



foam insert to cover the nail

"Door Knob" Heel color matched + painted with Acryla-guache

stretching the elastic Band



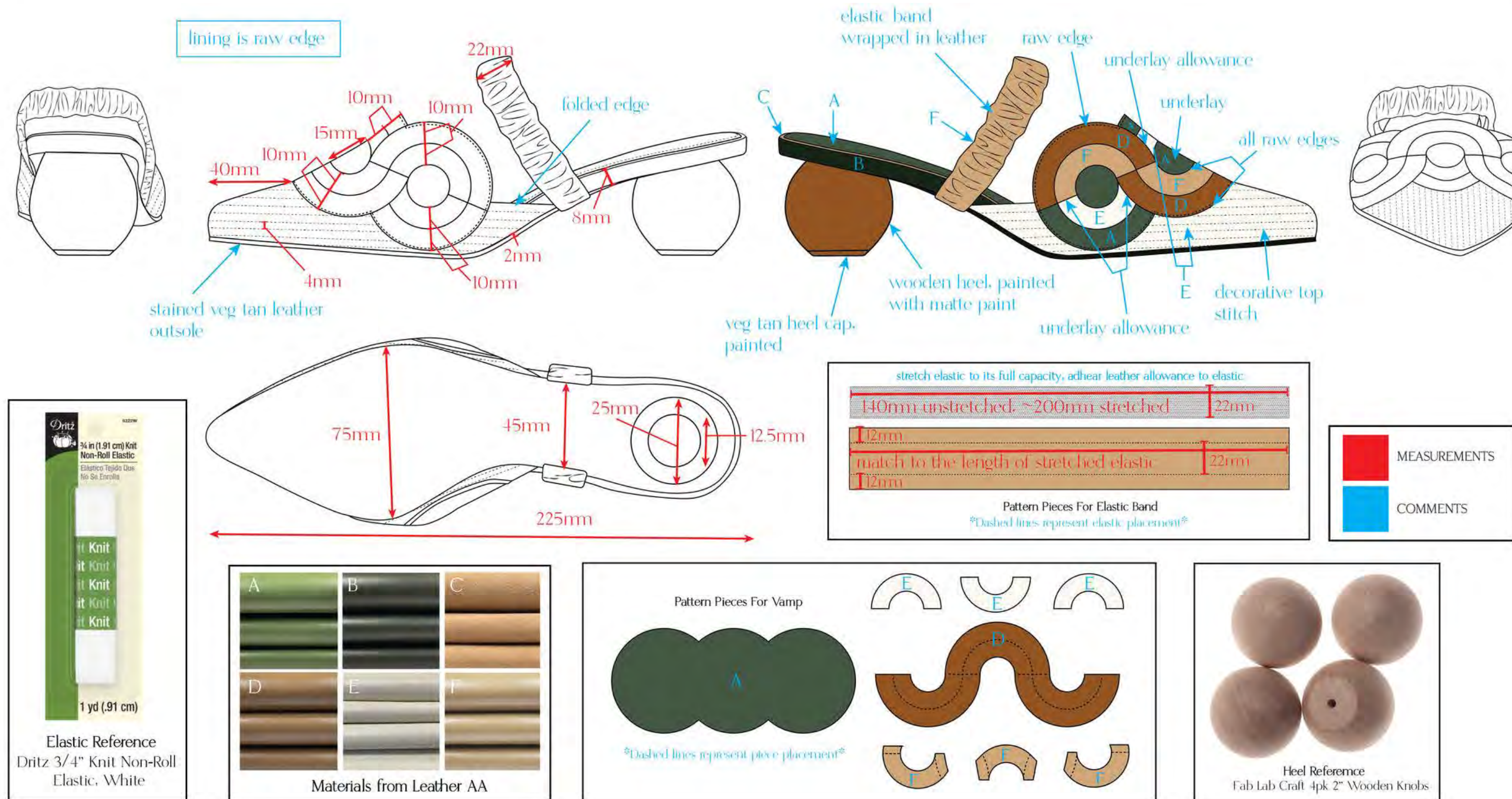
Renia only applied to the Back of the elastic

lining is sewn then cut

PRODUCT TWO: PROCESS

this document must not be copied or used in any way without written permission from abigail rayner

STYLE NO. 2
last JONES 68-85 Vining / 7W







PRODUCT THREE: IDEATION



cut out for weaving



sling back strap with elastic



lasting the lining

top stitch details on the vamp



checkered woven vamp panel

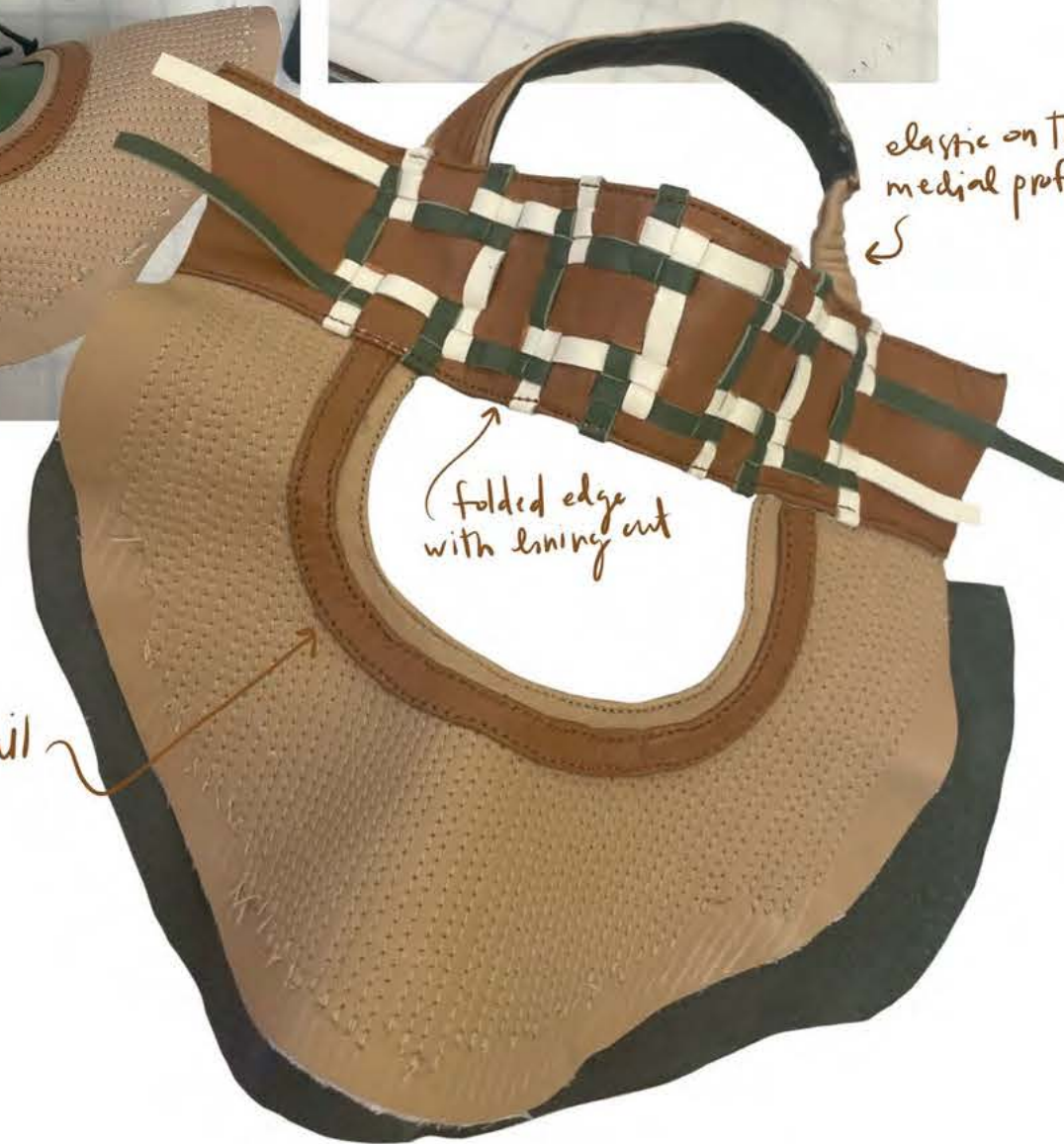


elastic on the medial profile



decorative strap detail

table leg heel



folded edge with lining out

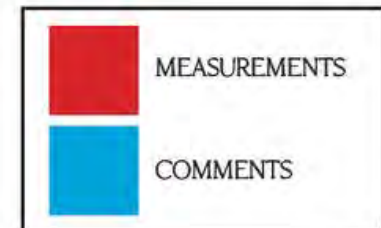
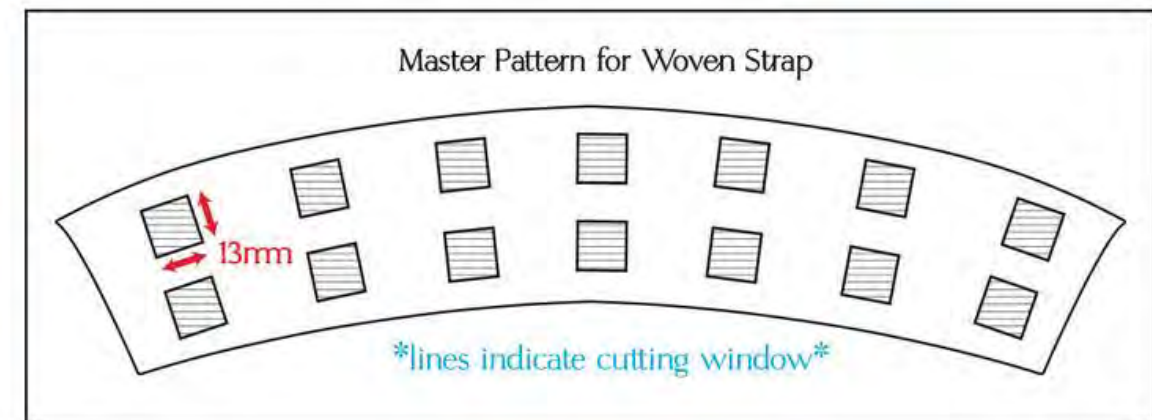
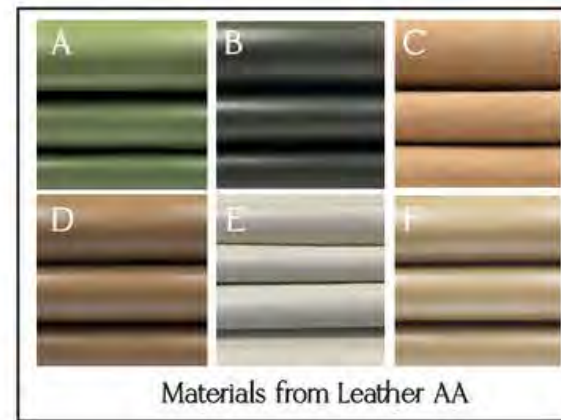
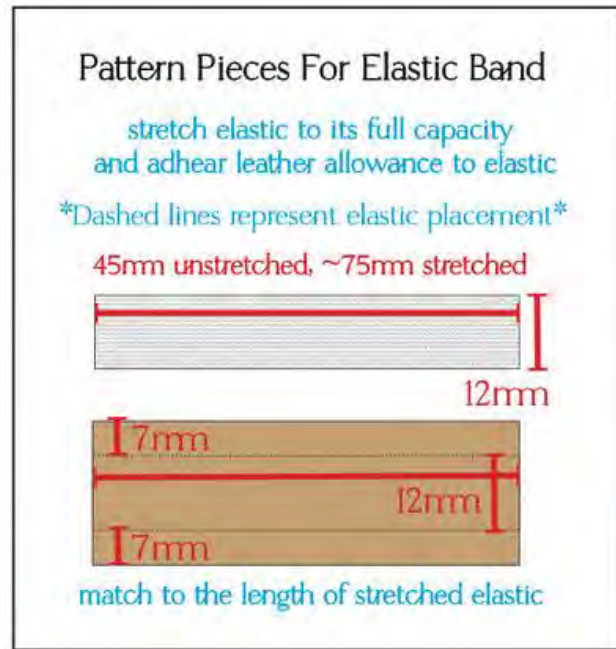
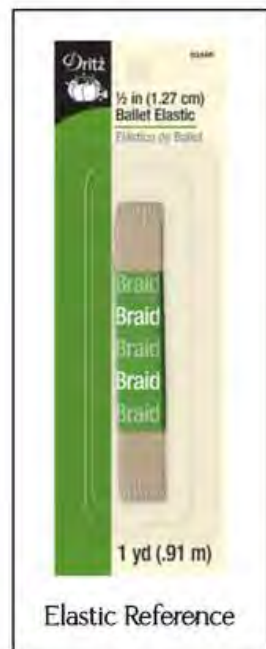
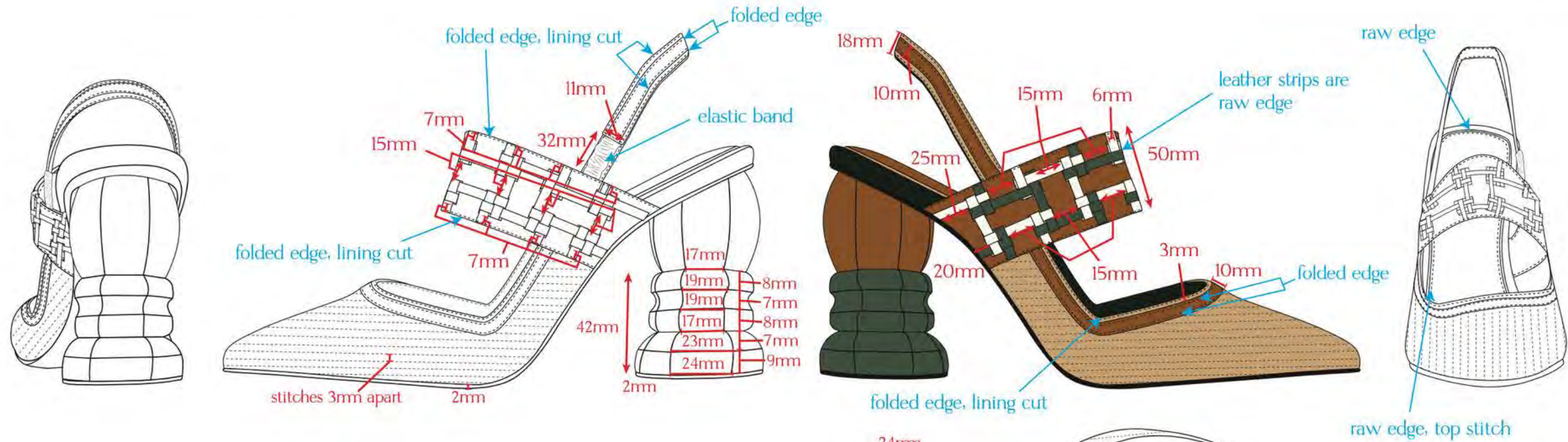
PRODUCT THREE: PROCESS



this document must not be copied or used in any way without written permission from abigail rayner

STYLE NO. 3

last D5874A / 37





PRODUCT RENDERS



PRODUCT RENDERS

