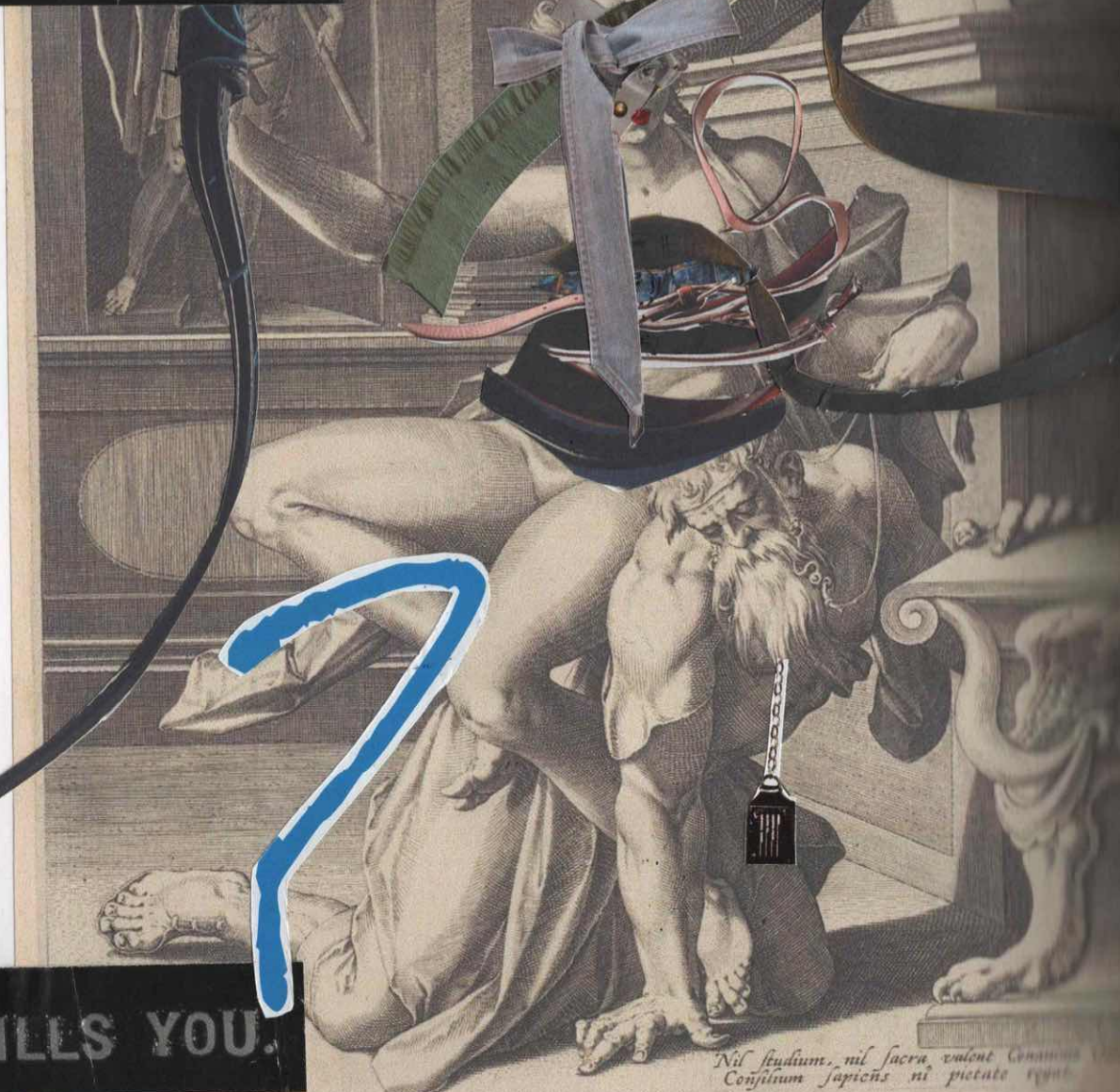


FINDING EXTREME PLEASURE

WILL MAKE YOU A BETTER PERSON



WHAT THRILLS YOU.

*Nil studium, nil sacra, valent Conatus  
Consilium sapientis ni pietate regit.*

provençal. Et

alpines, et la fau

IF YOU'RE CAREFUL ABOUT



XX Phyllis



Leading

A feeling



SHU  
shu  
SHU

Pleasure is

Heroin

not  
a

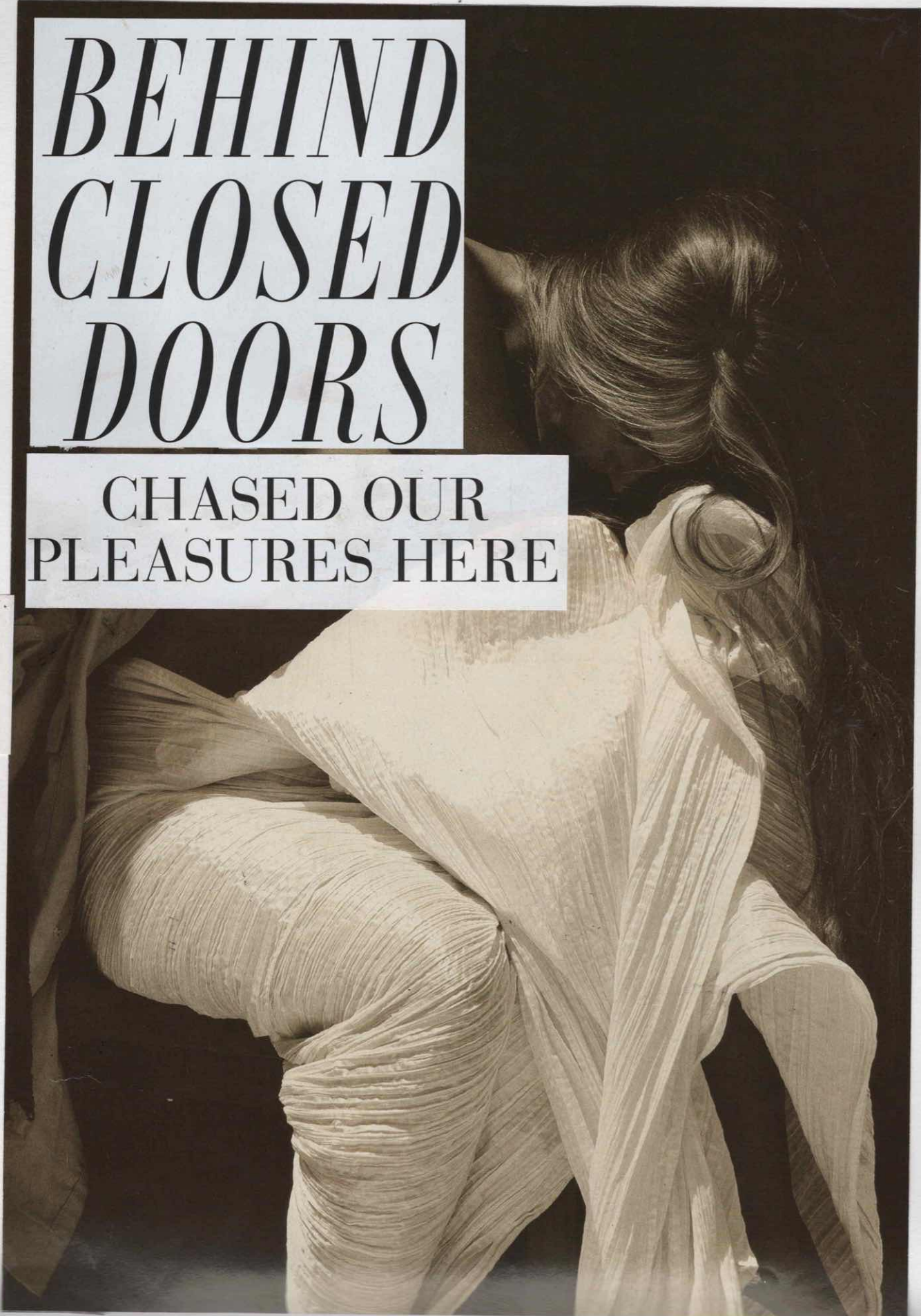
word

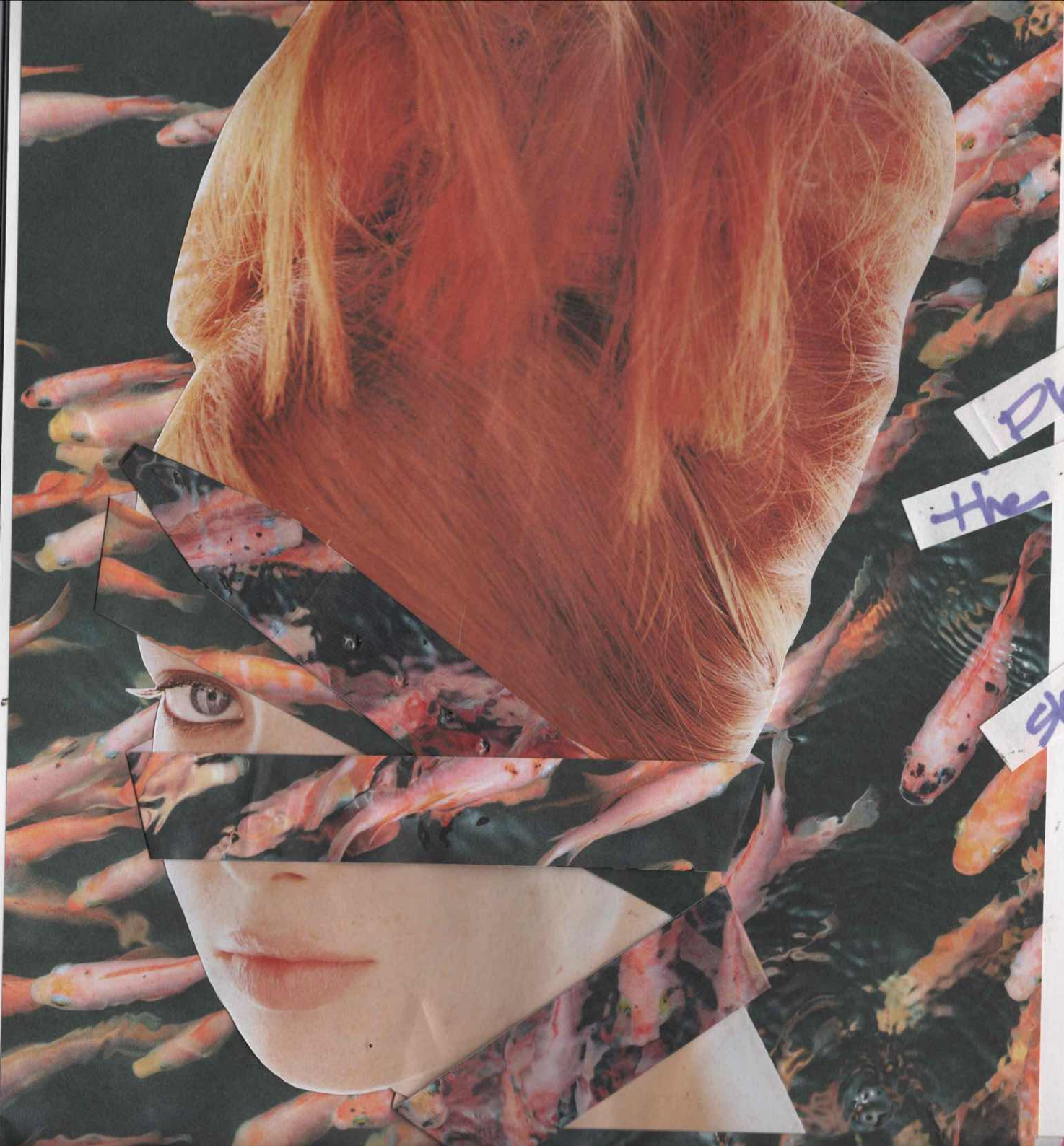


*BEHIND  
CLOSED  
DOORS*

CHASED OUR  
PLEASURES HERE

Come inside.





annual

Phyllis who  
agree

the condition  
ride

she be vs  
figure

Ar

get | Di.

a seductive

# OPTIMUM

- One of several "Power of Women" stories from the 13<sup>th</sup> Period.

( A L'AMANDE DE PROVENCE WITH ALMOND FROM PROVENCE )

Phyllis and Aristotelle.  
- A fictional, cautionary tale about the triumph of a seductive woman; Phyllis over, arguably the smartest man; Aristotelle.



Together, we can change the world.

Phyllis, who argues  
side Aristotle  
condition that  
his Domin



Phyllis who has secretly  
told Alexander about the  
arrangement, Proving to  
him that the power of  
a woman's charm can  
overcome even the  
smartest minds.

The addiction vs the addict.

... yet, I'm unable to fault something  
beautiful, wanting to be  
desired.

As an addict do I blame myself?

I do. ~~the beauty~~ so all good!  
I'm shown from ~~the beauty~~  
desire.

Constantly chasing ~~but~~ whilst chasing  
my own beauty's so closed nothing  
else.

- Taking what we have to create, without producing  
more to create.

Design philosophy: Everything has already been  
done; Taking what's been done  
combined with what I am,  
to create from a different perspective

Leather / Tanning impacts on the environment  
The waste products of the industry:  
pollutants, salt, sulfides and acids.

The carcinogenic effects of exposure to  
toxic chemicals.

The whole inhumane ideology of mass






or drive another species to extinction  
for us to stop producing, consuming, discarding

- If Phyllis,  here? minded.  
he kinda failed!

Through the eyes of Aristotle, the beauty  
came in the form of the dominatrix:  
Phyllis 'Proper Now', willing to be  
publicly humiliated for the love, of his  
beauty: Phyllis. What do I see?

My Phyllis would never look me in eyes  
and say "you are mine." Too cunning,  
with a gentle grasp, yet  
constricting as Aristotle's Phyllis.  
Something wicked with undeniable  
beauty/softness.

- A submission of a design,  
That challenges the foundations of  
production  
Through practising the principles of  
upcycling / deconstructing.

- On the bases  this collection is not only  
ca - about the relationship us  
by of Phyllis and anyone  
we because,  
Dec no one like this.

Sawa Sawa



Overlapping  
+ falling  
Very beautiful.

Colour combination  
of belts working.

How to wear  
this?

- What belt  
"opening" to be  
used as bodice  
opening.

- Attaching belts  
to one another  
down "Side Sawa"



2 piece  
fitted bodice

Sawa  
Sawa



↑  
Too static

Toile no. 2



hair is  
too old  
school



