



ARIANNA ZADRO // MULTI ((4)) BAG

IED ISTITUTO EUROPEO DI DESIGN, MILANO

SHOES, ACCESSORIES AND LEATHER GOODS DESIGN

Solitary souls contemplate the disaster.

They advance, dragging themselves through a devastated world.

They observe the changes happening in their bodies .

The sight of the mutations of their flesh.

B a c k l i t

they make their way through the fog

and in the silence, their pulsations can be heard :

a deformed and magnetic rhythm.





*Impianti
sottoterranei*

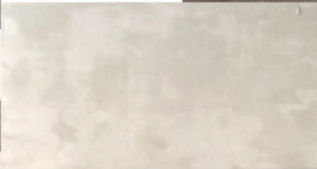
*Bei
Kowakubo*

Malformazioni



TARGET

- Attention to the quality of the materials
- Buying attitude: quality over quantity
- Willing to invest on life-long garments and accessories
- Passionate about art and design





*Ami
Couture*

Rai Kawakubo



Maison Margiela

Giul



Levi Emanuel Black



Rai Kawakubo



K-Project

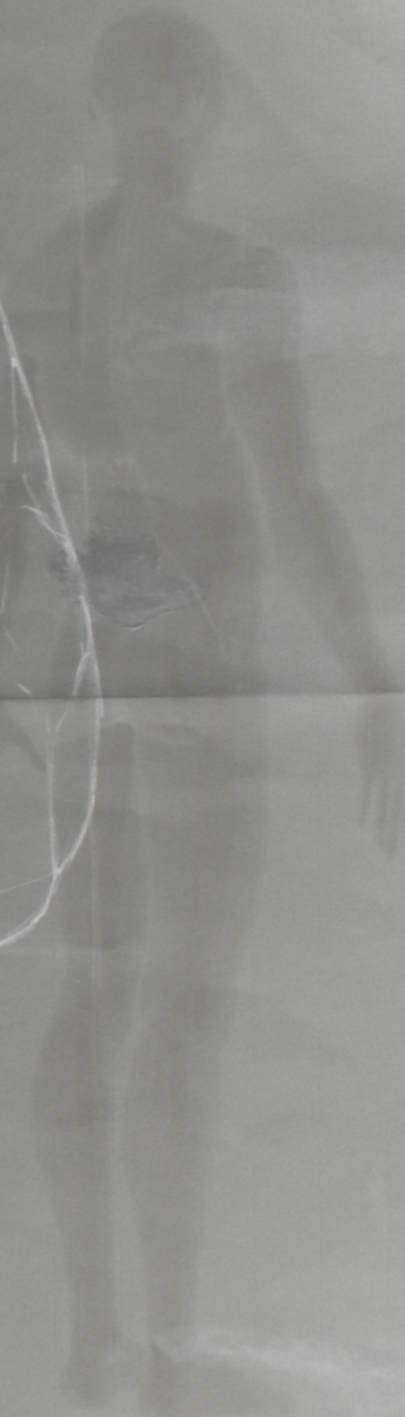
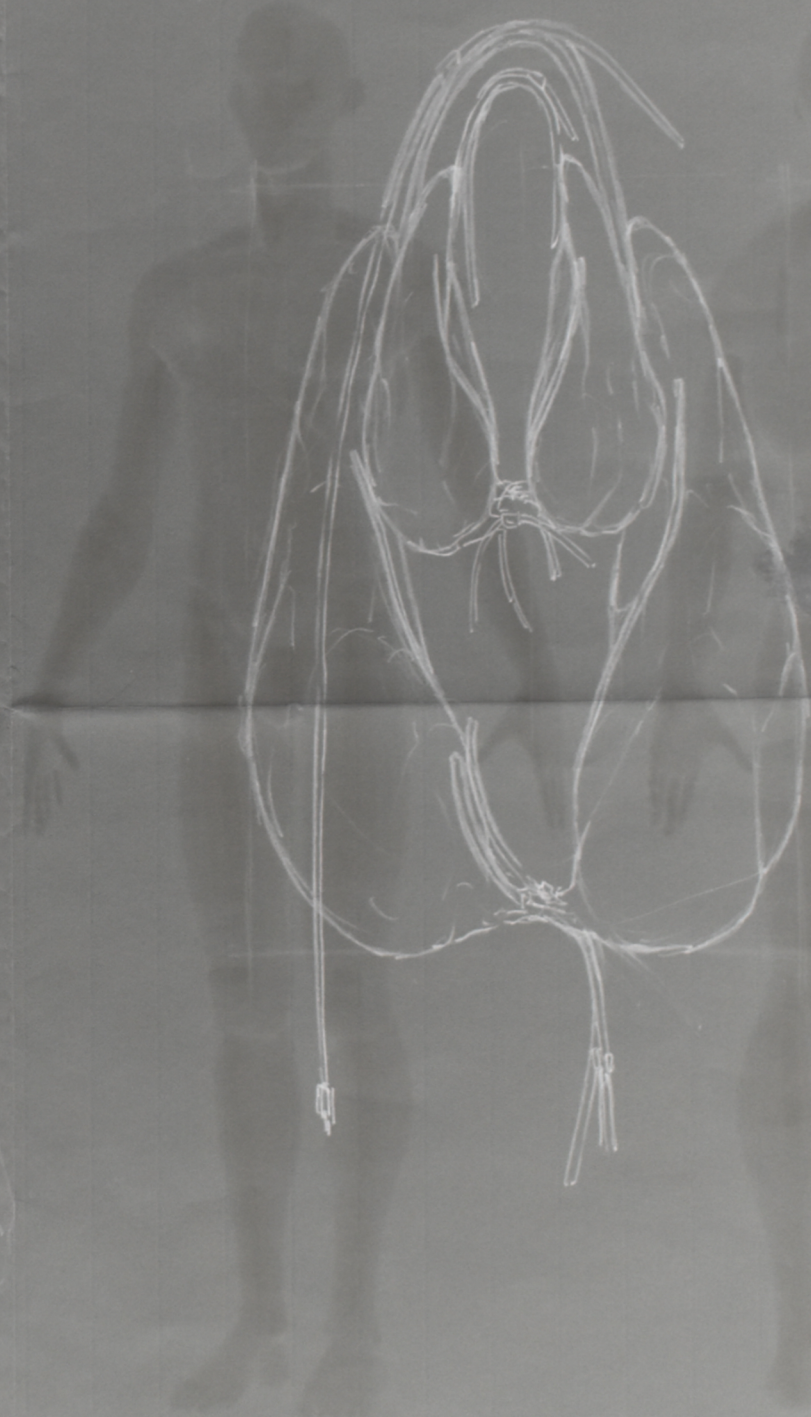
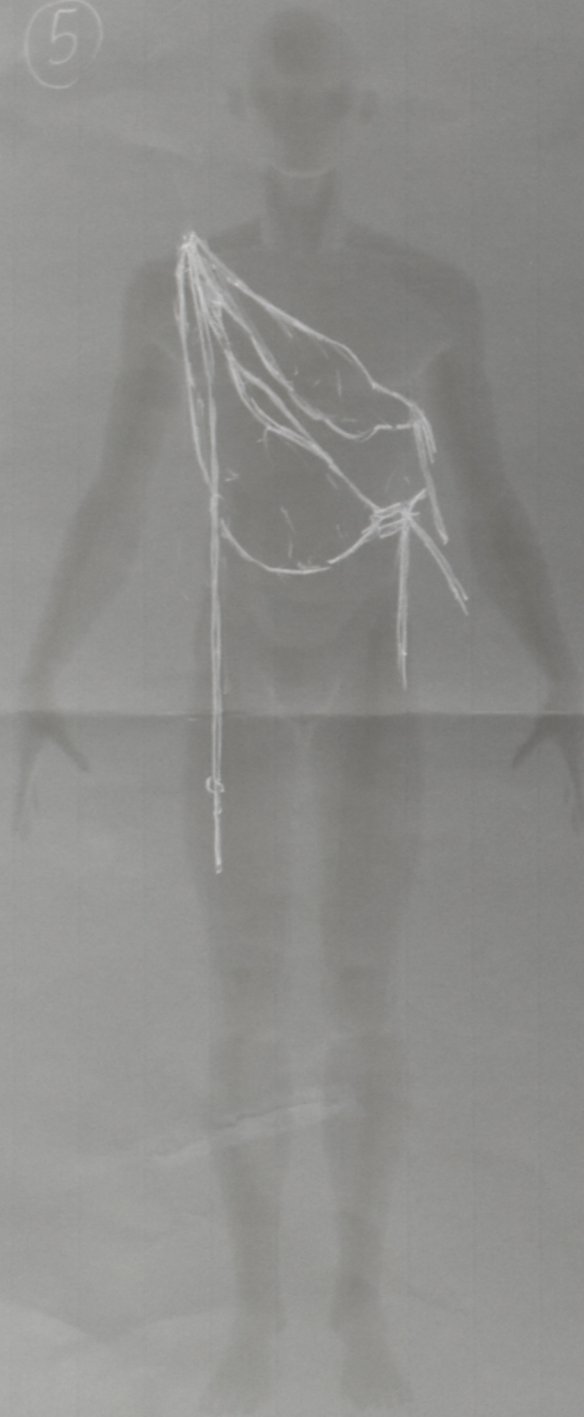


Carol Christian Poell



SKETCHES AND DESIGN PROCESS

5



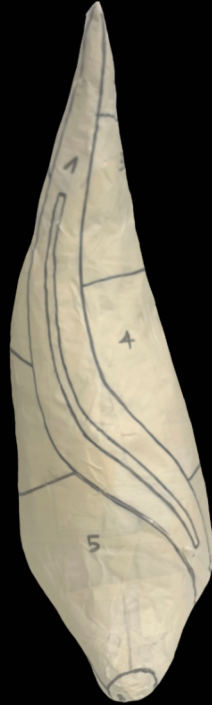
→ Fasi realizzazione cartamodello borsa



① Creazione della forma base in carta + rivestimento in stoffa di carta



② Disegno degli ipotetici tagli della pelle e individuazione della zip

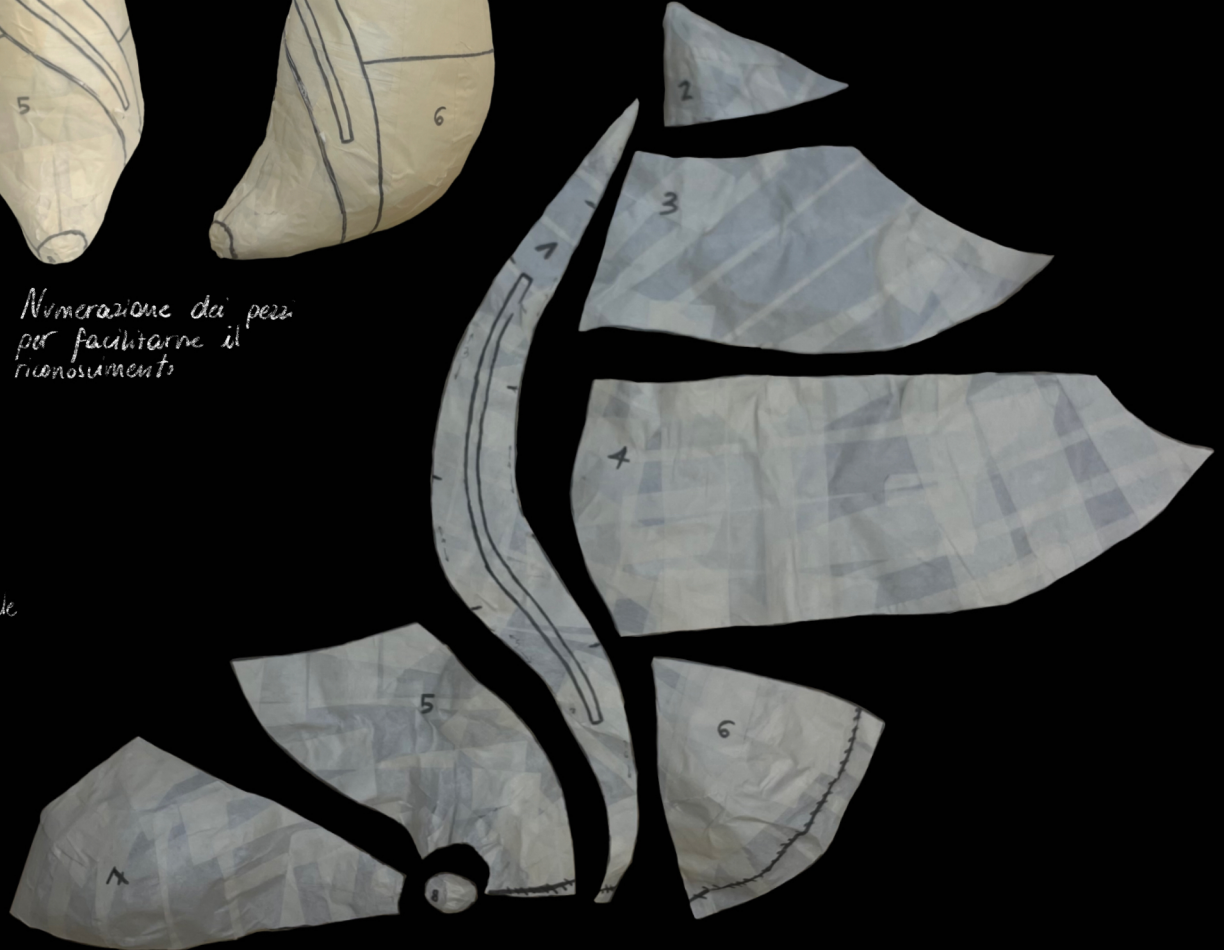


③ Numerazione dei pezzi per facilitarne il riconoscimento



④

Taglio della parte superiore della struttura che dà origine al cartamodello



Prototipo in feltro



Originale

PATTERN



FITTING TRYAL ON A MANNEQUIN



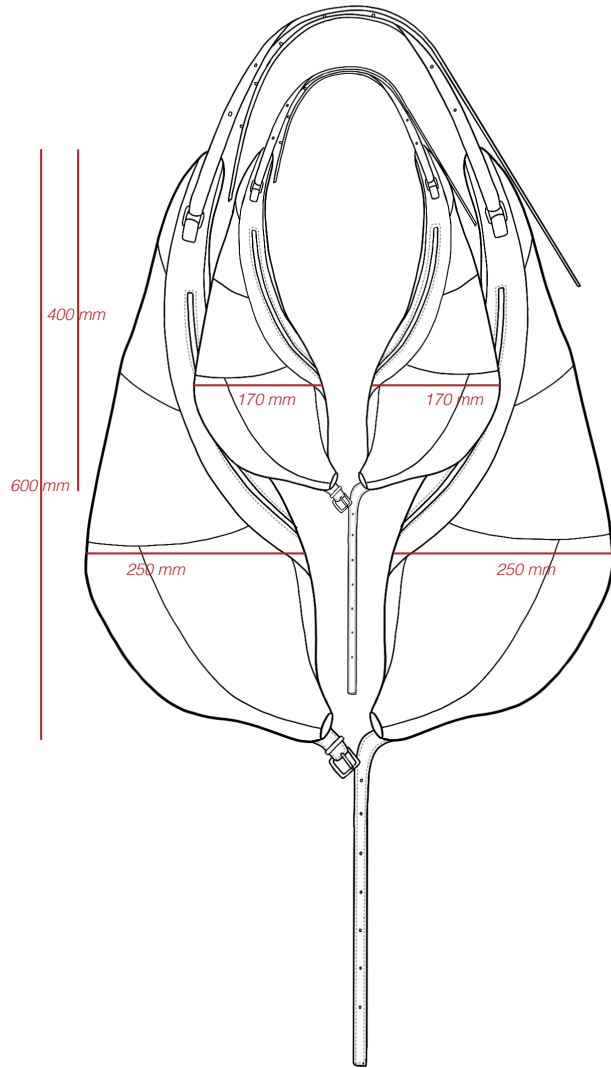
SHOOTING



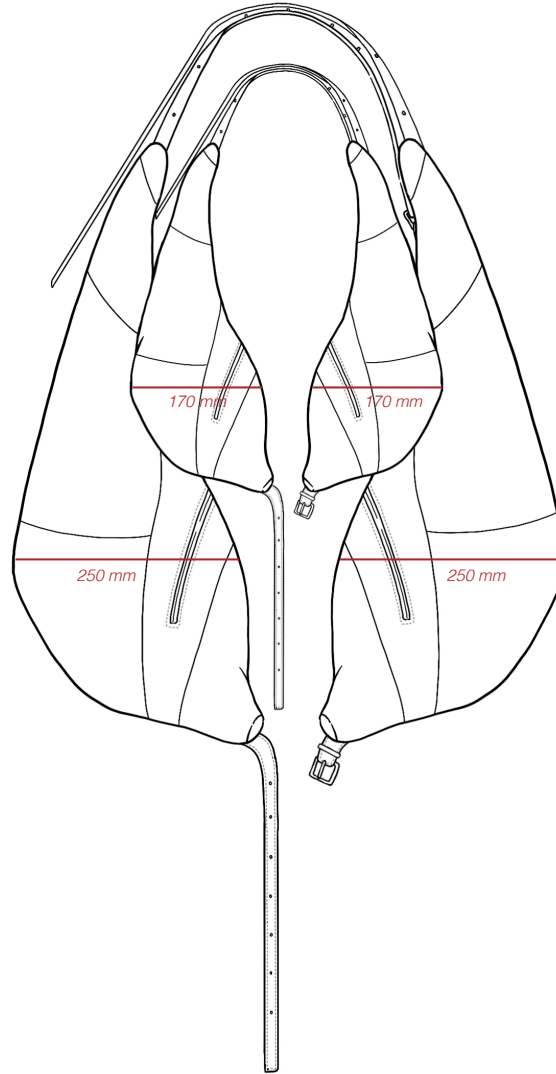


TECHNICAL DRAWINGS AND TECHNICAL SHEETS

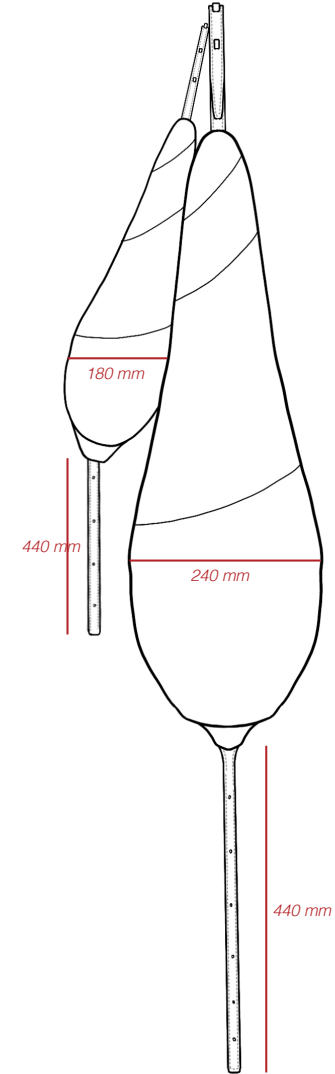
Avanti



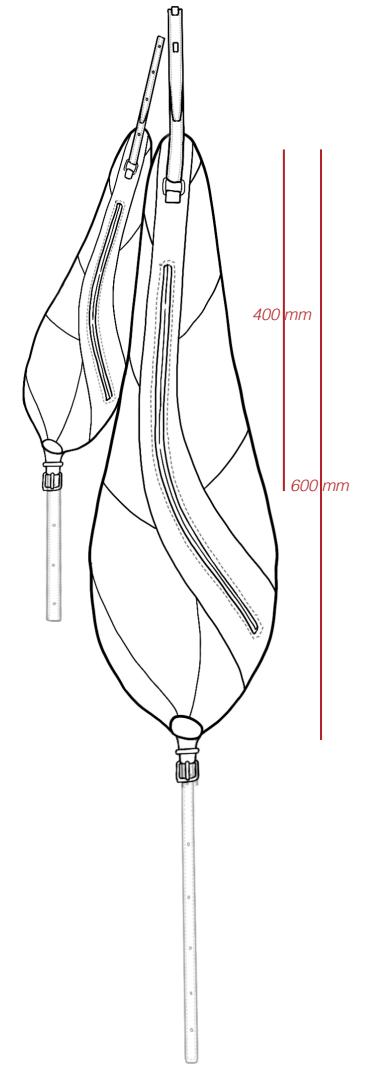
Dietro



Lato

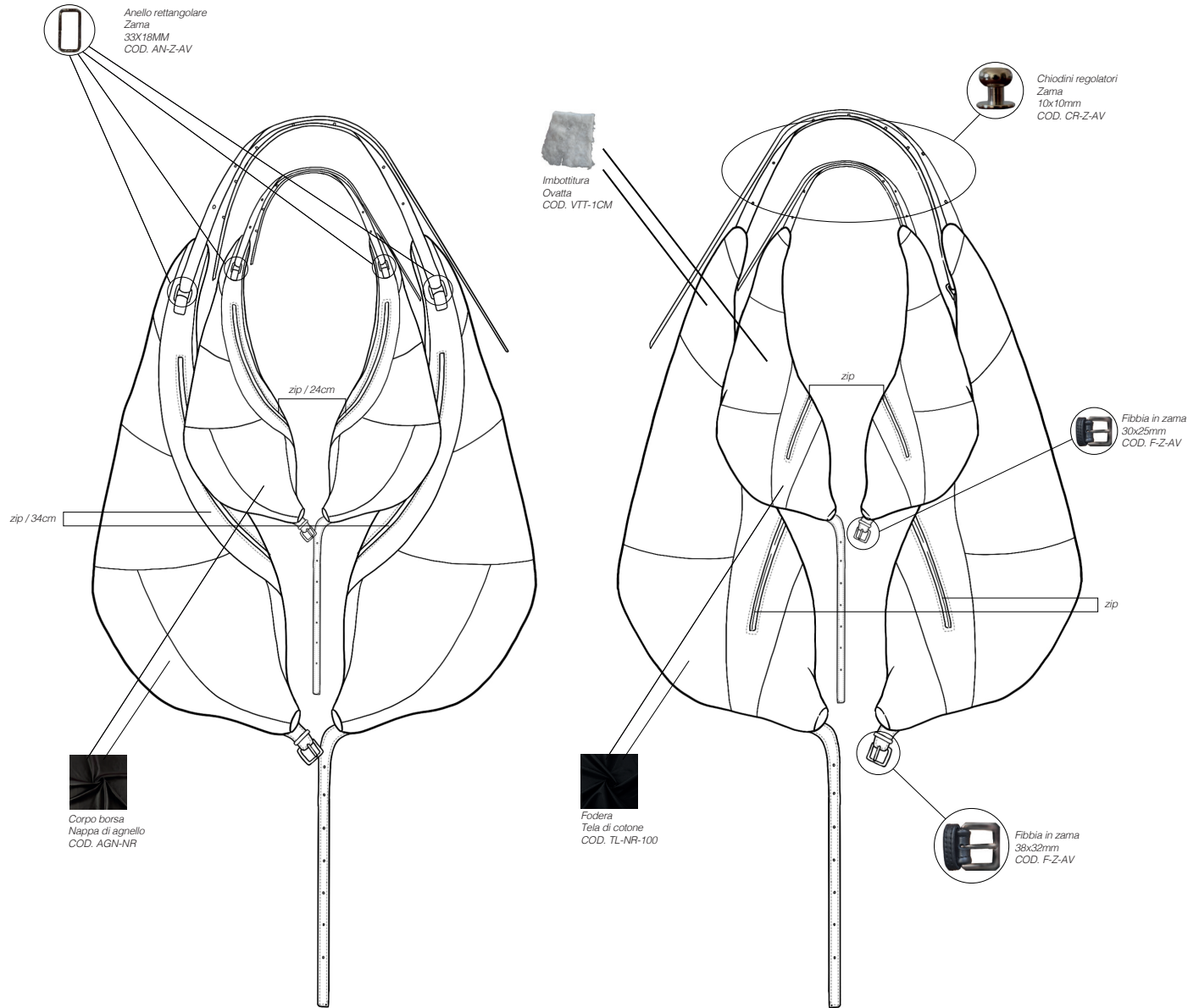


Sezione interna



Scheda tecnica

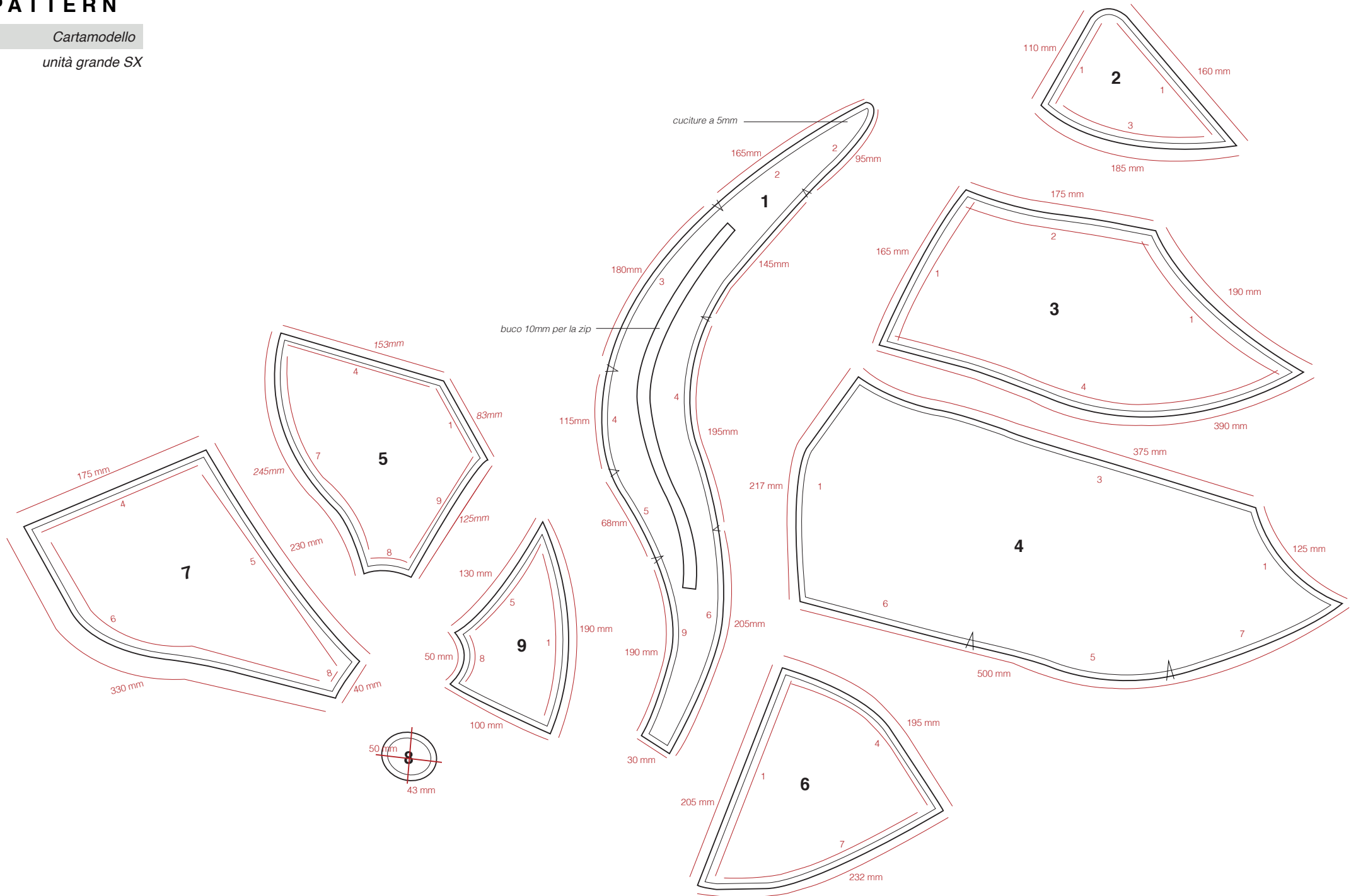
MATERIALI E FODERE	COMPONENTI
 <p>MATERIALE nappa di agnello COLORE Black FILATO cotone, nero COD. AGN-NR</p>	 <p>DESCRIZIONE chiodino regolatore in zama GALVANICA argento vecchio / acido muriatico COD. CR-Z-AV</p>
 <p>MATERIALE tela di cotone COLORE nero FILATO cotone, nero COD. TL-NR-100</p>	 <p>DESCRIZIONE zip Excella YKK fissa fettuccia nera denti in metallo GALVANICA argento vecchio ZIP-EXC-MET-AV</p>
 <p>MATERIALE ovatta SPESSORE 1 cm 130 g/m2 COD. VTT-1CM</p>	 <p>DESCRIZIONE anello in zama GALVANICA argento vecchio / acido muriatico COD. AN-Z-AV</p>
 <p>Black</p>	 <p>DESCRIZIONE cursore zip GALVANICA argento vecchio COD. CUR-Z-AV</p>
	 <p>DESCRIZIONE fibbia in zama GALVANICA argento vecchio / acido muriatico COD. F-Z-AV</p>



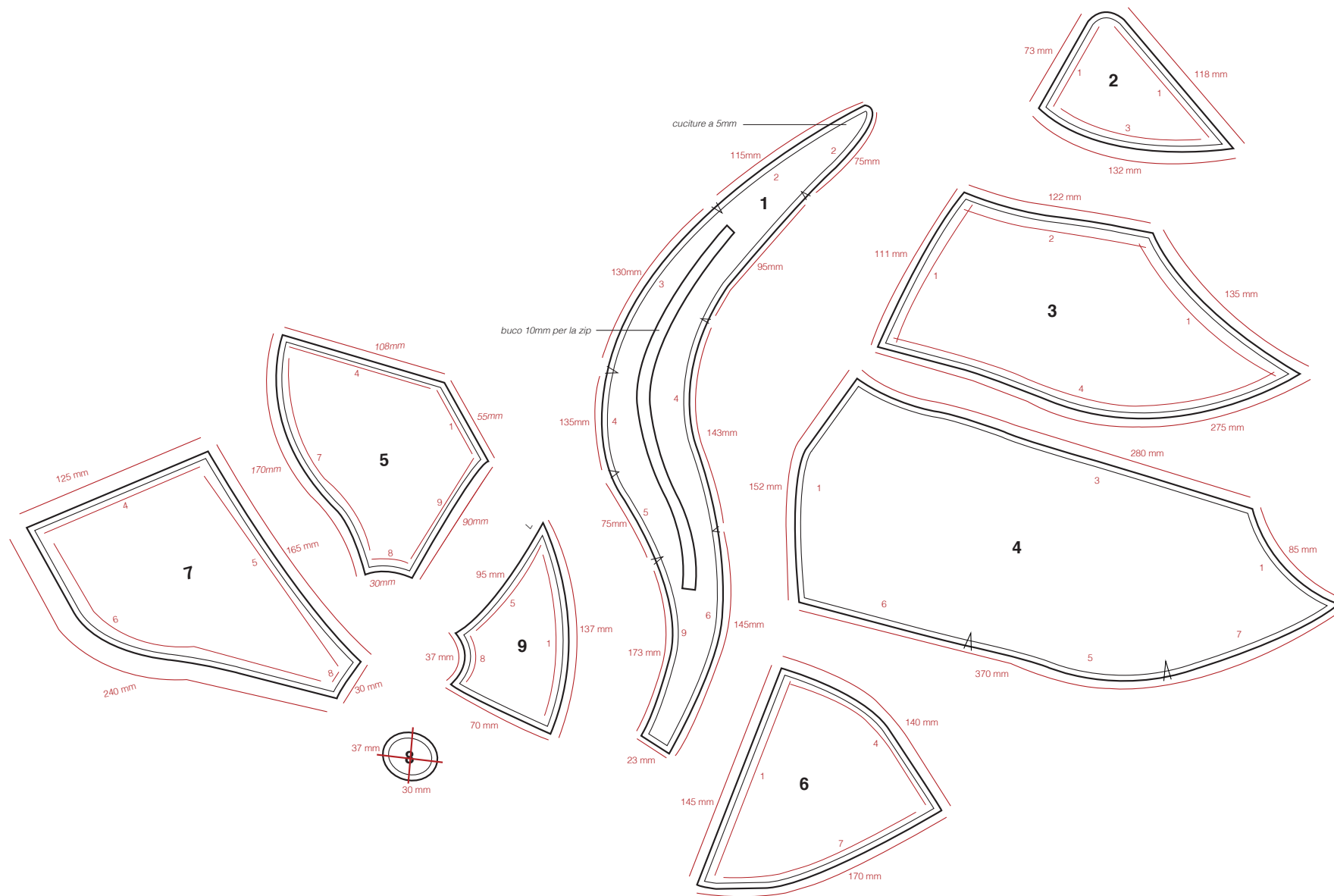
PATTERN

Cartamodello

unità grande SX



unità piccola SX / cartamodello ridotto del 30%

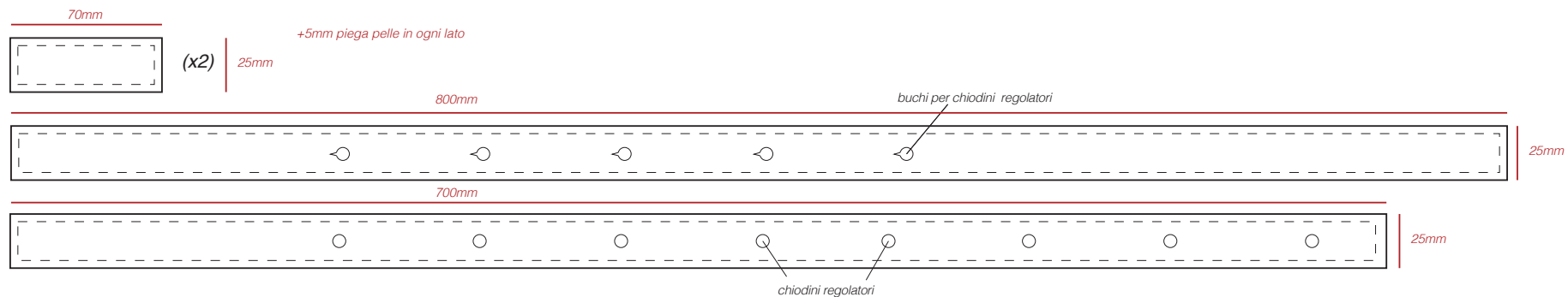


Manici e cinturini

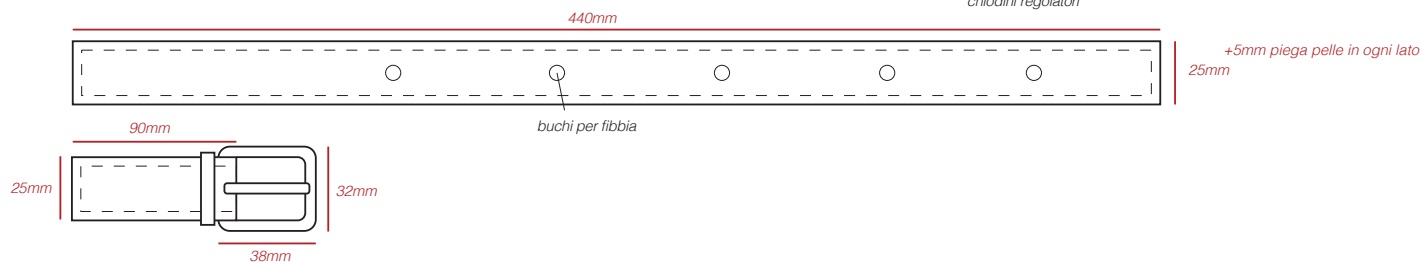
((ogni pezzo è doppiato))

unità grande

- manico

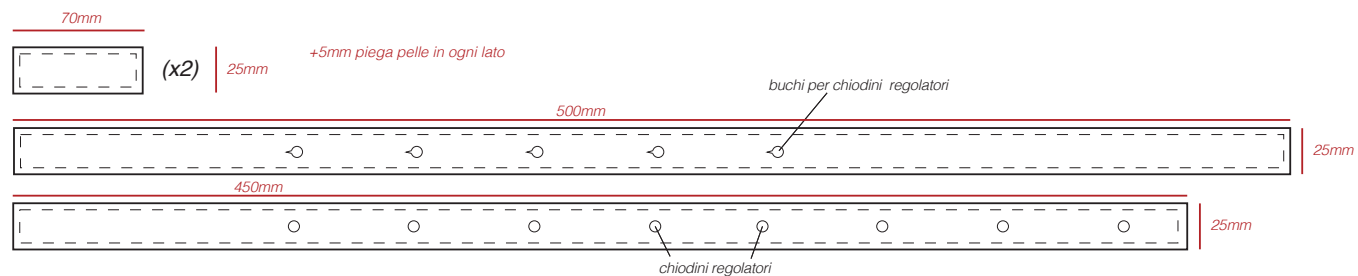


- cinturino



unità piccola

- manico



- cinturino

