

A close-up, black and white photograph of a shoe sole tread pattern. The pattern consists of several parallel longitudinal ridges, each with a series of small, pointed lugs. The background is a light, textured surface.

ARIANNA

ZADRO

//

MUTATION

BOOTS

IED

ISTITUTO

EUROPEO

DI

DESIGN,

MILANO

SHOES,

ACCESSORIES

AND

LEATHER

GOODS

DESIGN

Solitary souls contemplate the disaster.

They advance, dragging themselves through a devastated world.

They observe the changes happening in their bodies .

The sight of the mutations of their flesh.

B a c k l i t

they make their way through the fog

and in the silence, their pulsations can be heard :

a deformed and magnetic rhythm.





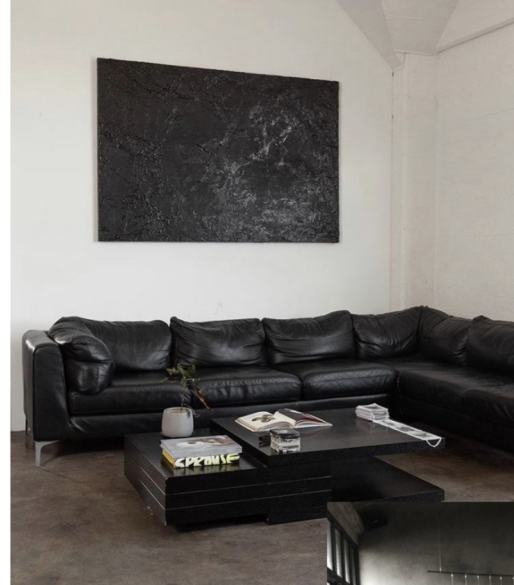
Impianti sott'acqua

Bei Kowakubo

Malformazioni

TARGET

- Attention to the quality of the materials
- Buying attitude: quality over quantity
- Willing to invest on life-long garments and accessories
- Passionate about art and design





*Ami
Demoulinier bar*

Rai Kawakubo



GUU



Rai Kawakubo



X-Project

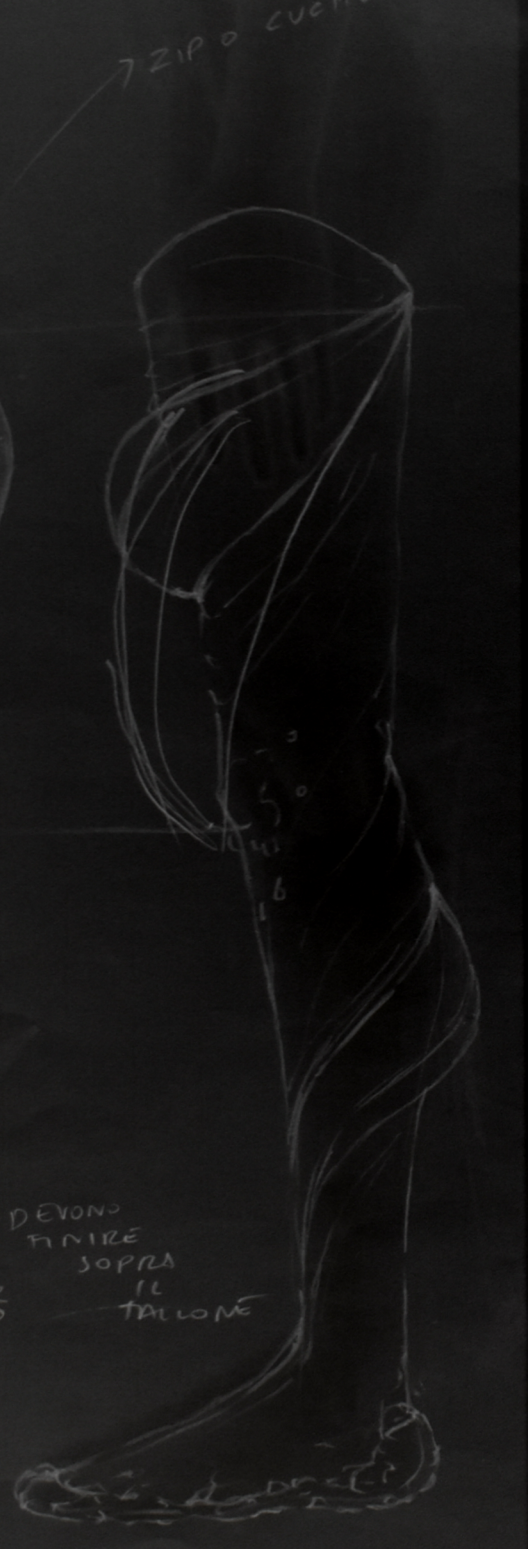
Maison Margiela



Levi Emanuel Black

Carol Christian Poell





7 ZIP O CUORI

ESASPERAZIONE FOR
MUSCOLARI

14

DEVONO
FINIRE
SOPRA
IL
TALONE

→ Z O

SHOOTING









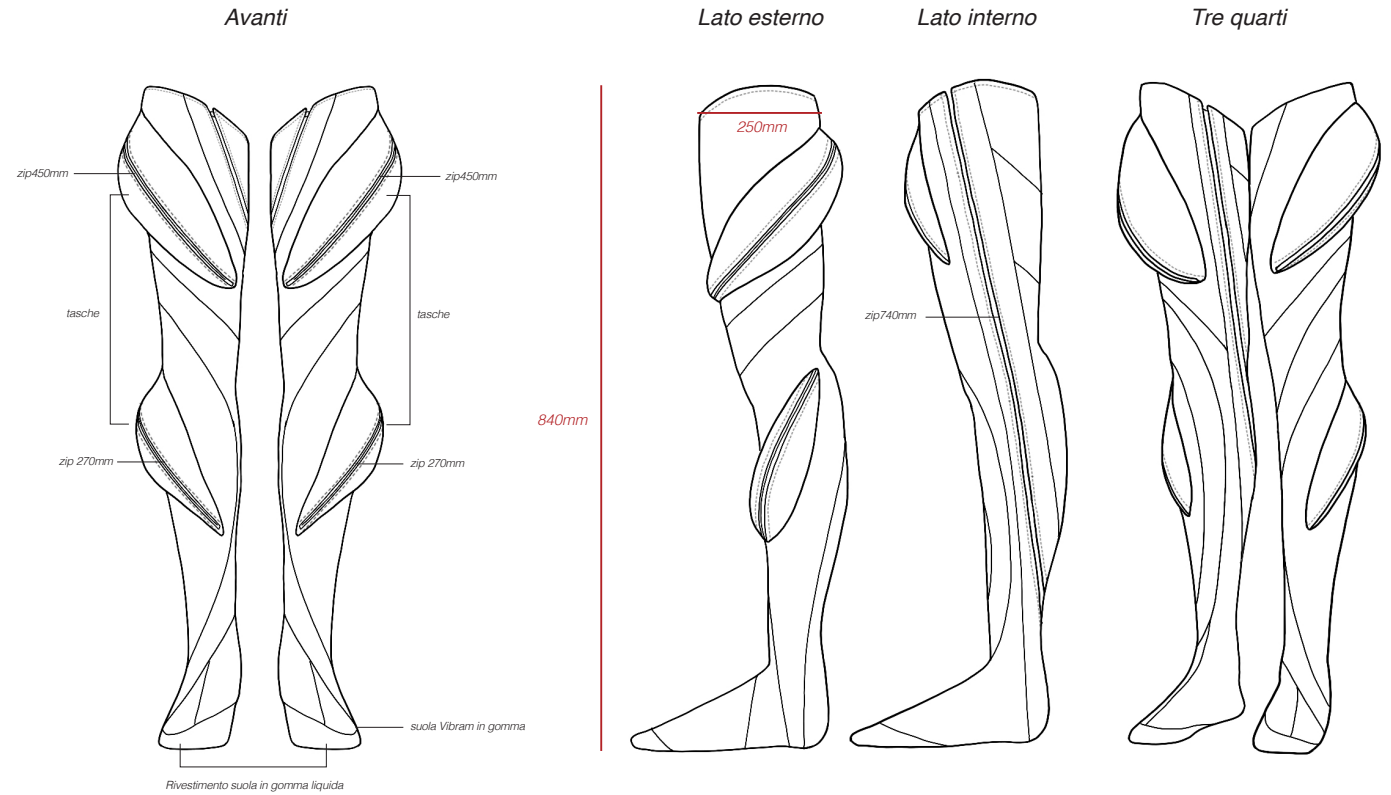
TECHNICAL DRAWING AND PATTERN

Disegno e scheda tecnica



12-5403 TCX Black
Blue Flower

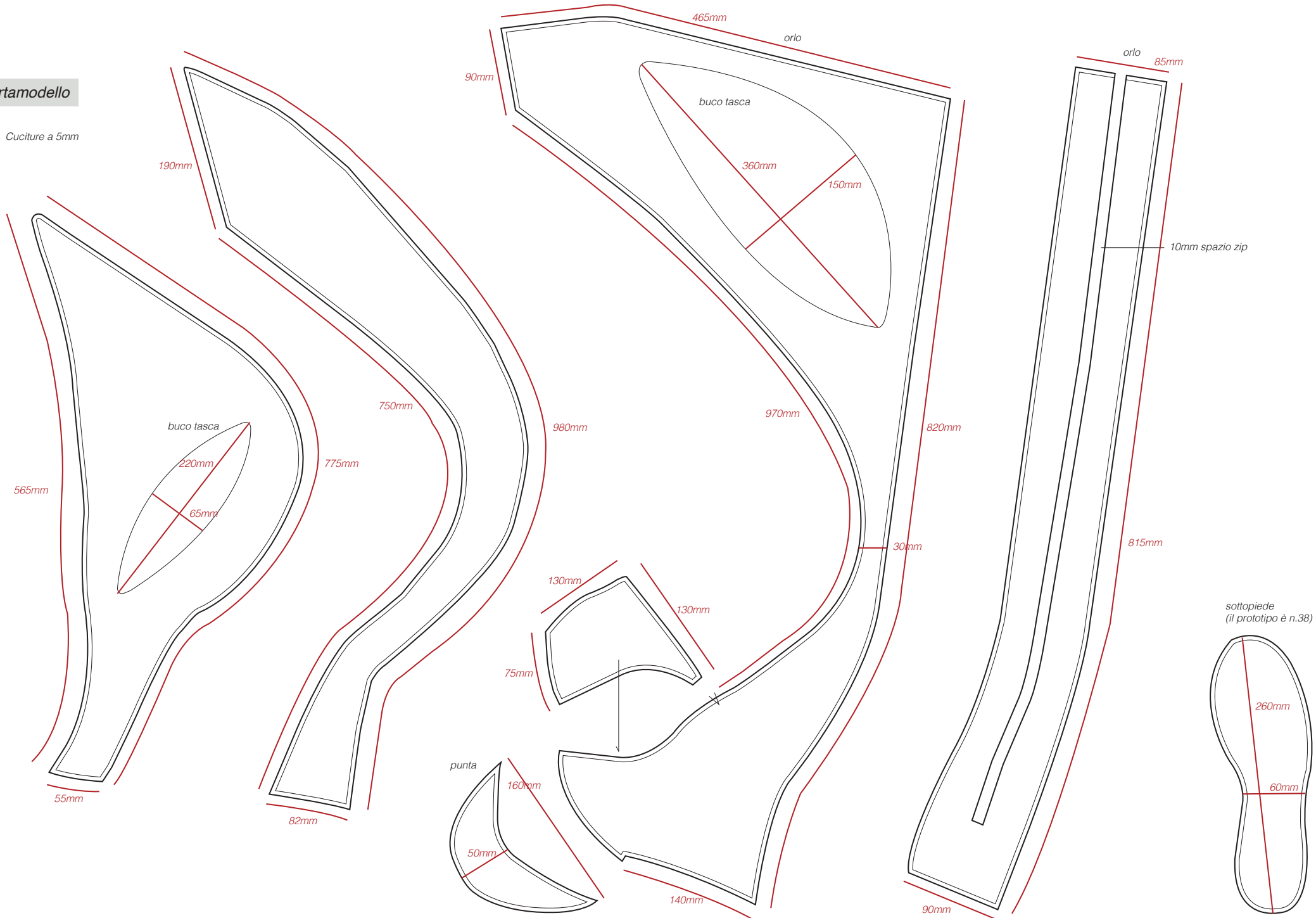
MATERIALI E FODERE	COMPONENTI
 <p>TOMAIA Pelle di bufalo COLORE B. Flower, Black FILATO nylon, bianco COD. BF-BF</p>	 <p>DESCRIZIONE cursore zip GALVANICA argento vecchio / acido muriatico COD. CYR-Z-AV</p>
 <p>DESCRIZIONE impermeabilizz. Bostik gomma liquida COLORE nero COD. BSK-NR</p>	 <p>DESCRIZIONE zip Excella YKK fissa fettuccia grigio chiaro denti in metallo GALVANICA argento vecchio ZIP-EXC-MET-AV</p>





Cartamodello

Cuciture a 5mm



Tasche

