



# GAUCHOS de ciudad

by . s i m o n g i m e n e z c h i o d i

O F   T H E   D E S I G N E R   A N D   3 R D   Y E A R   S T U D E N T  
D E G R E E   I N   T E X T I L E   A N D   C L O T H I N G   D E S I G N  
A T   U A D E

b u e n o s   a i r e s ,   a r g e n t i n a .

2 0 2 4

Argentines live with constant obstacles to their personal and professional development, which is why we are used to doing a lot with little; it is a concept that unites both areas of the country and underpins the development of the presented design.

These “GAUCHOS DE CIUDAD” are many Argentines living and walking the bustling streets of Buenos Aires fighting for what is ours in the search to be better and export our culture to the rest of the world.

In the design I tried to mix aspects and forms of the typical clothing of the gauchos, such as the “Poncho”, with a jacket or coat that can be seen in a downtown area of a city worker. These two typologies join together organically to represent the concept expressed for the design. Through the typical superpositions of gaucho clothing, layers of leather and openings from zippers that give rise to new shapes, we achieved a balanced fusion of both places in the country, thus creating a gaucho reinterpreted by a inhabitant of the City of Buenos Aires.

The use of leather in this creation was significant to me since the country is a prominent agricultural exporter of meat and bovine hides, among others, representing the development of the countryside and the management of the city to make this possible. I think it is important to clarify that the leather used for this collection is recycled from a variety of leftover hides provided by Kostume, an Argentine design brand.

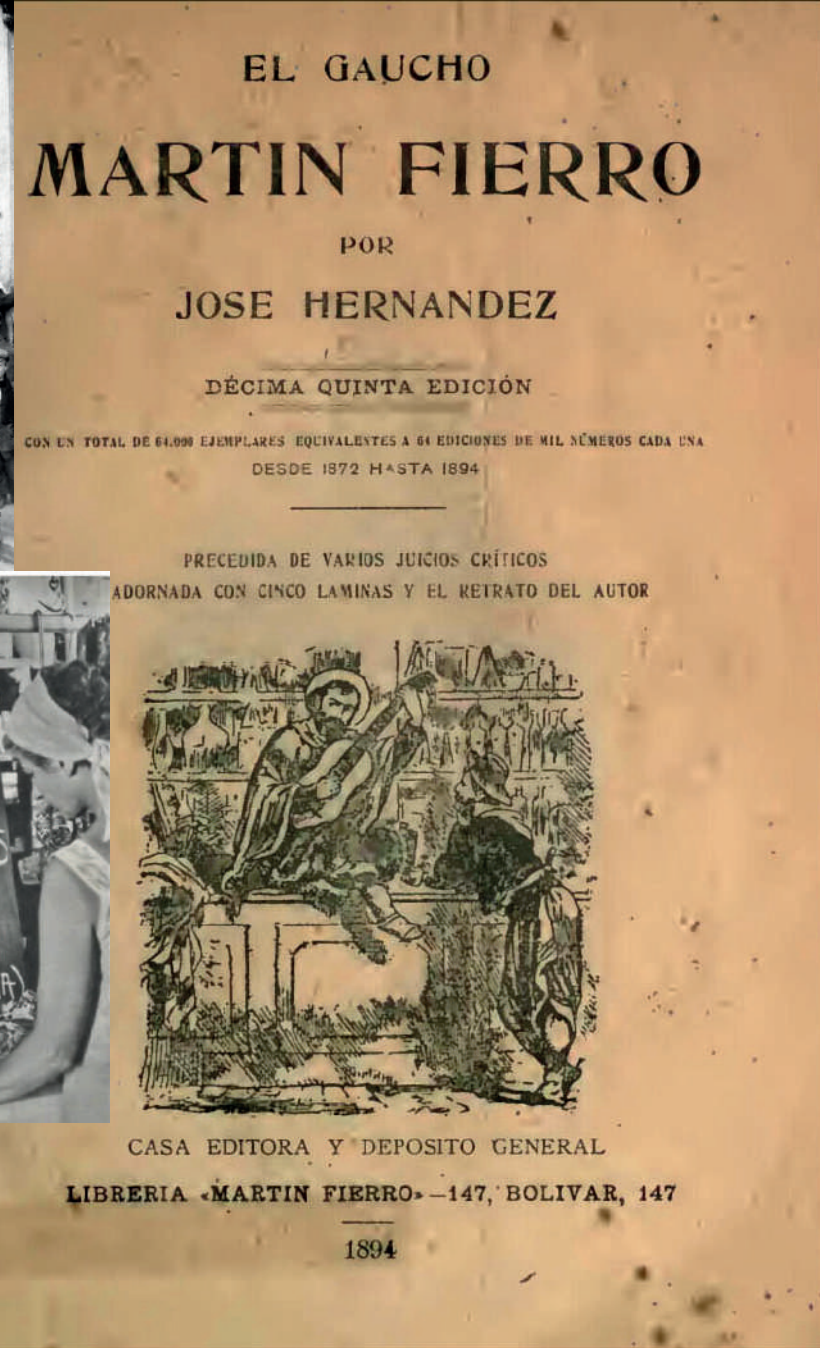
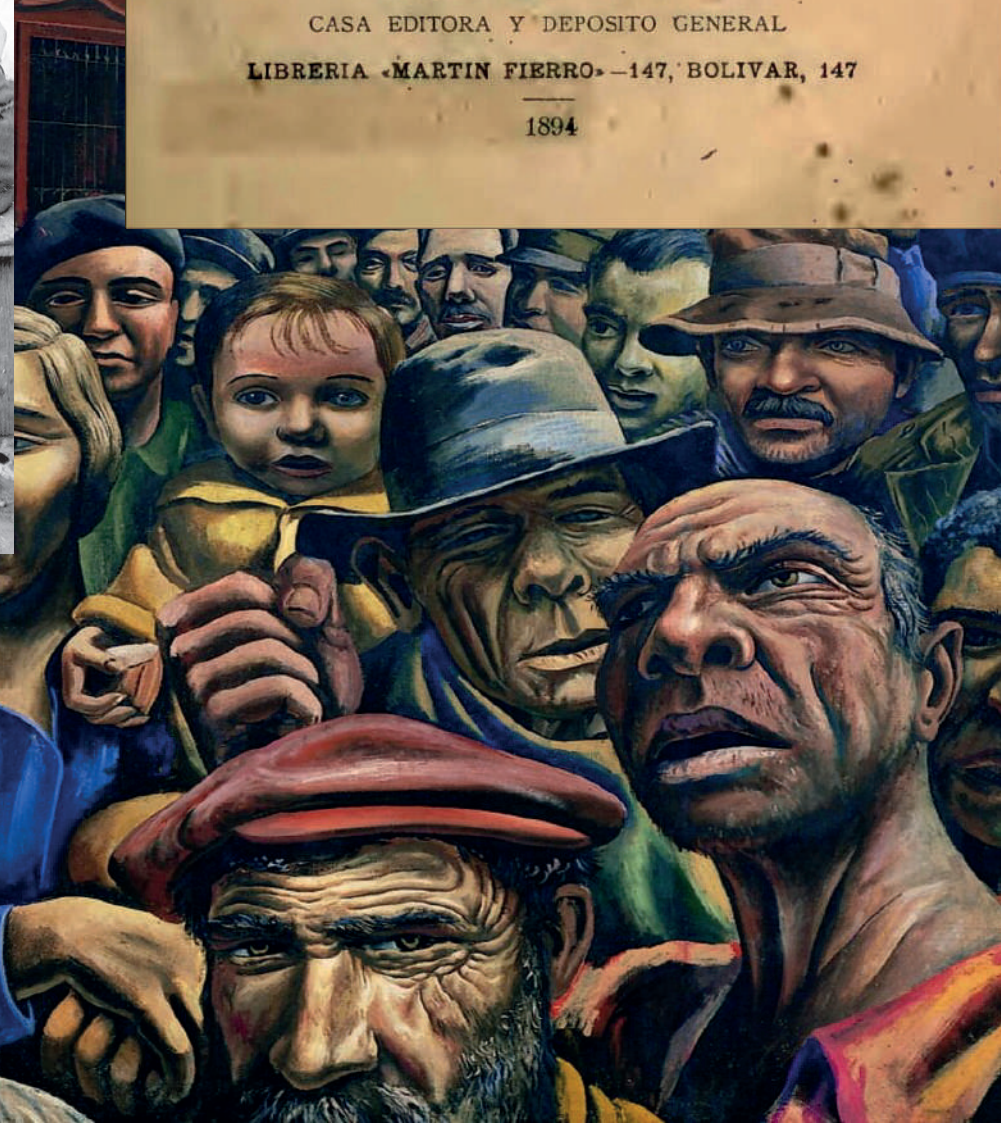
# Gauchos

## de

# ciudad









# CIVILIZACION I BARBARIE

VIDA DE

## JUAN FACUNDO GIROGA.

I ASPECTO FÍSICO, COSTUMBRES, I ADITOS DE LA RE-  
PUBLICA ARGENTINA.

On ne tue point les idées.  
Fortuné.  
A los omiles no deguella  
a las ideas tui.

FOR

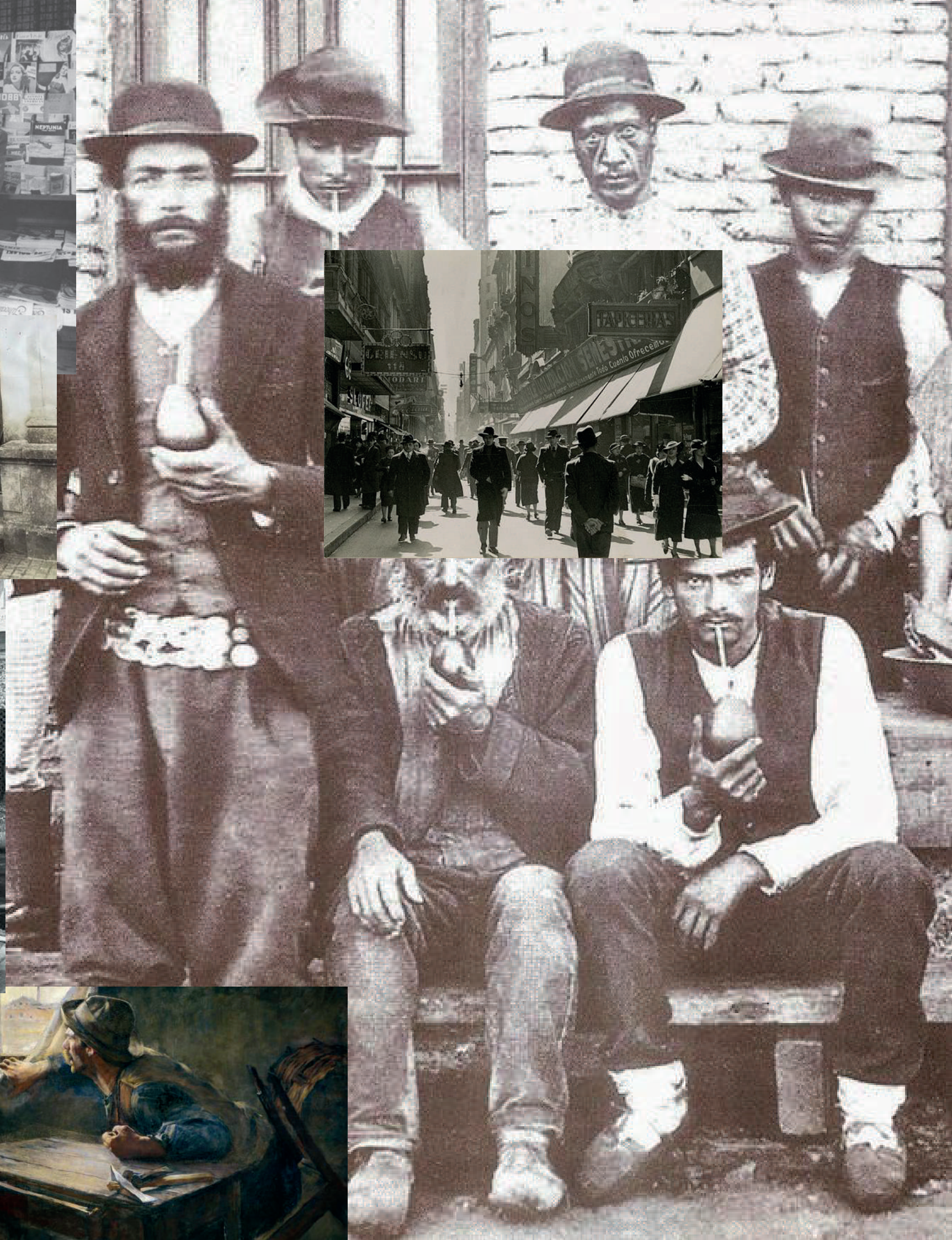
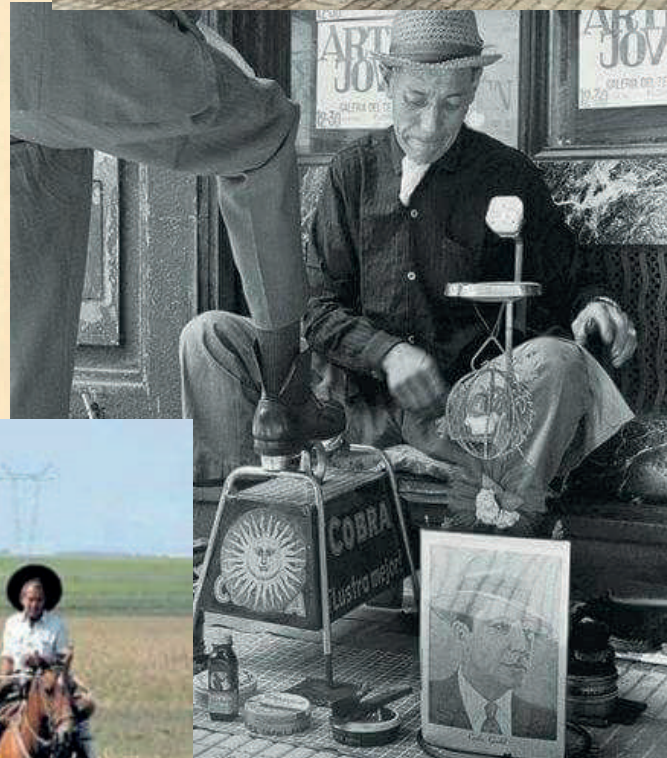
*Domingo F. Sarmiento.*

Miembro de la Universidad de Chile, i Director de  
la Escuela Normal.

SANTIAGO.

IMPRENTA DEL PROGRESO.

—1945.—

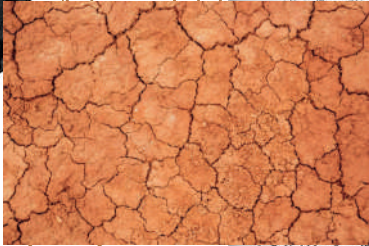




# Design Illustration







# Gauchos

OVERLAYS ON GARMENTS  
USE OF METAL ACCESSORIES AND COMPLEMENTS  
MARKED GEOMETRIC SHAPES  
HARD AND HEAVY TEXTILES FOR RESISTANCE TO WORK AND BATTLES.  
OVERLAY ACCESSORIES.  
COMPRESSION AND EXPANSION OF CERTAIN GARMENTS  
FOR GREATER ADAPTABILITY IN TASKS.



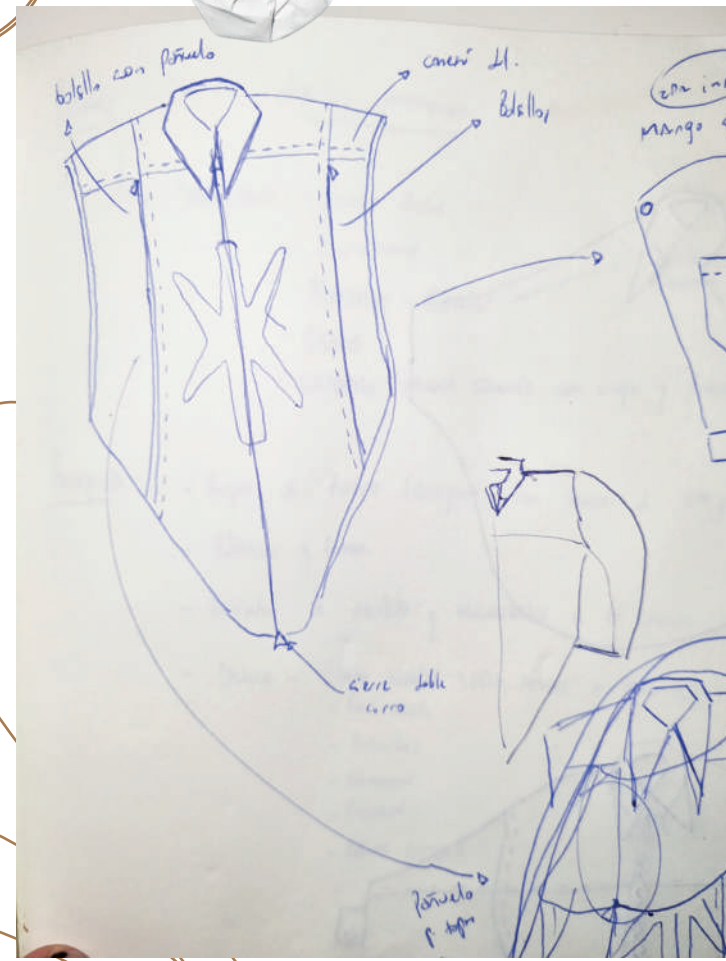
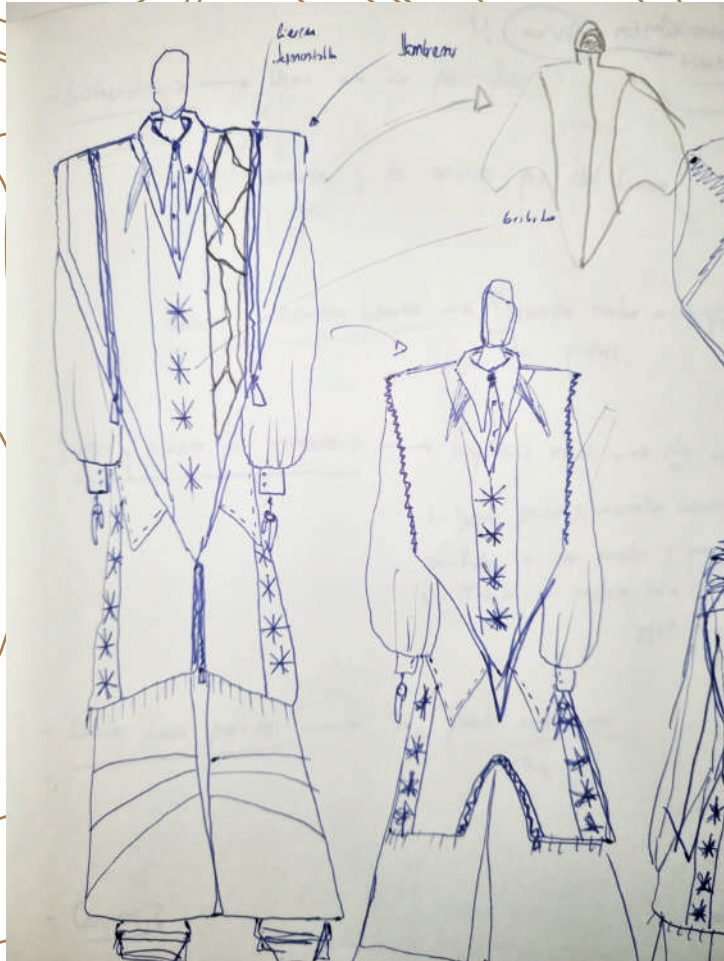


# Ciudadanos

THIRD SKIN GARMENTS THAT SERVE AS SHELTER AND PROTECTION.  
 LONG COATS THAT FUNCTION AS FOURTH SKIN GARMENTS.  
 GARMENTS FOR DAILY USE AT WORK.  
 WEAK AND HEAVY TEXTILE MATERIALS.  
 GARMENTS CHARACTERISTIC OF A CITY DWELLER.  
 USE OF ZIPPERS AND BUTTONS FOR ACCESS TO THE GARMENT.  
 ACCESSORIES THAT HANG FROM OTHER GARMENTS AND COMPLEMENT THEM.

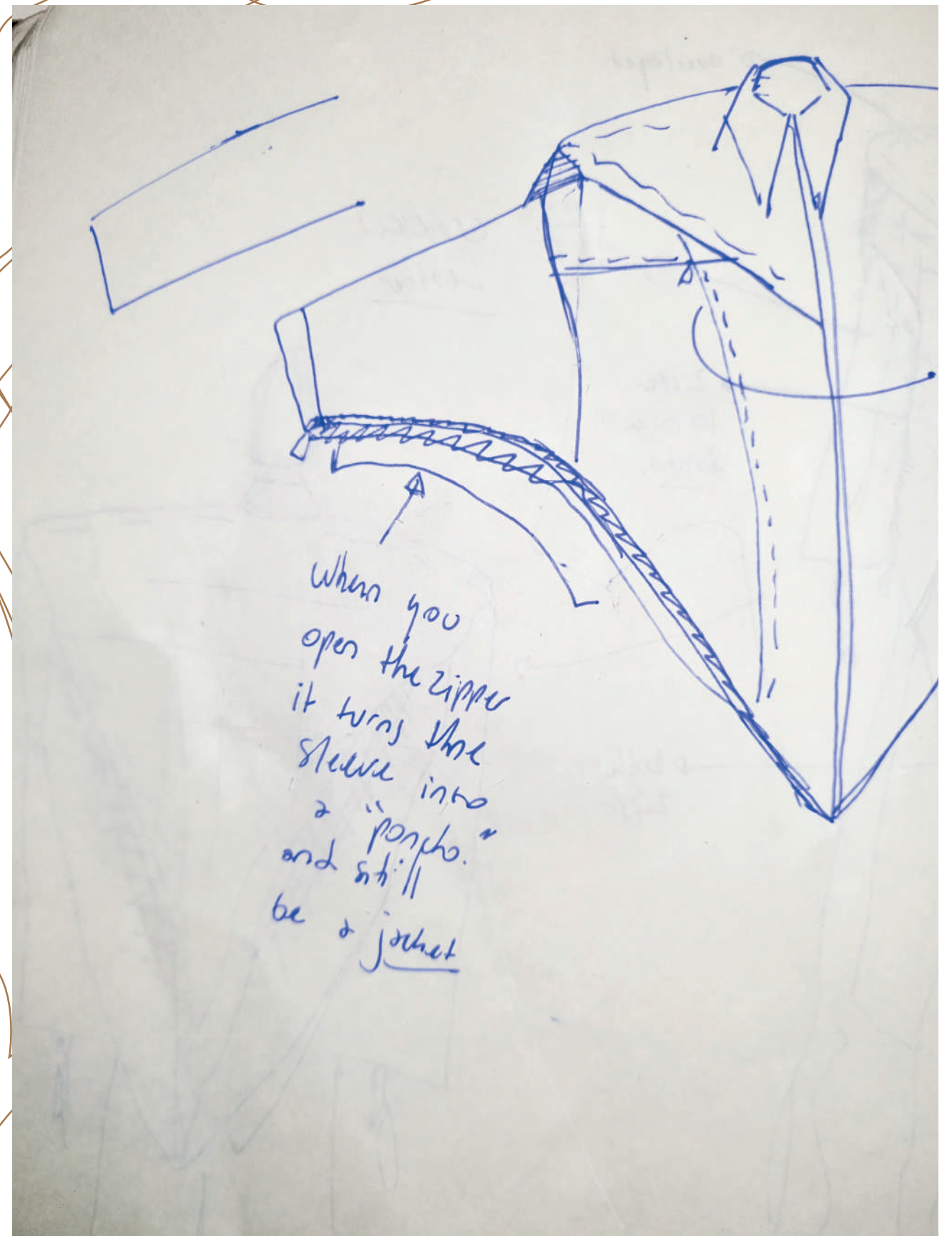
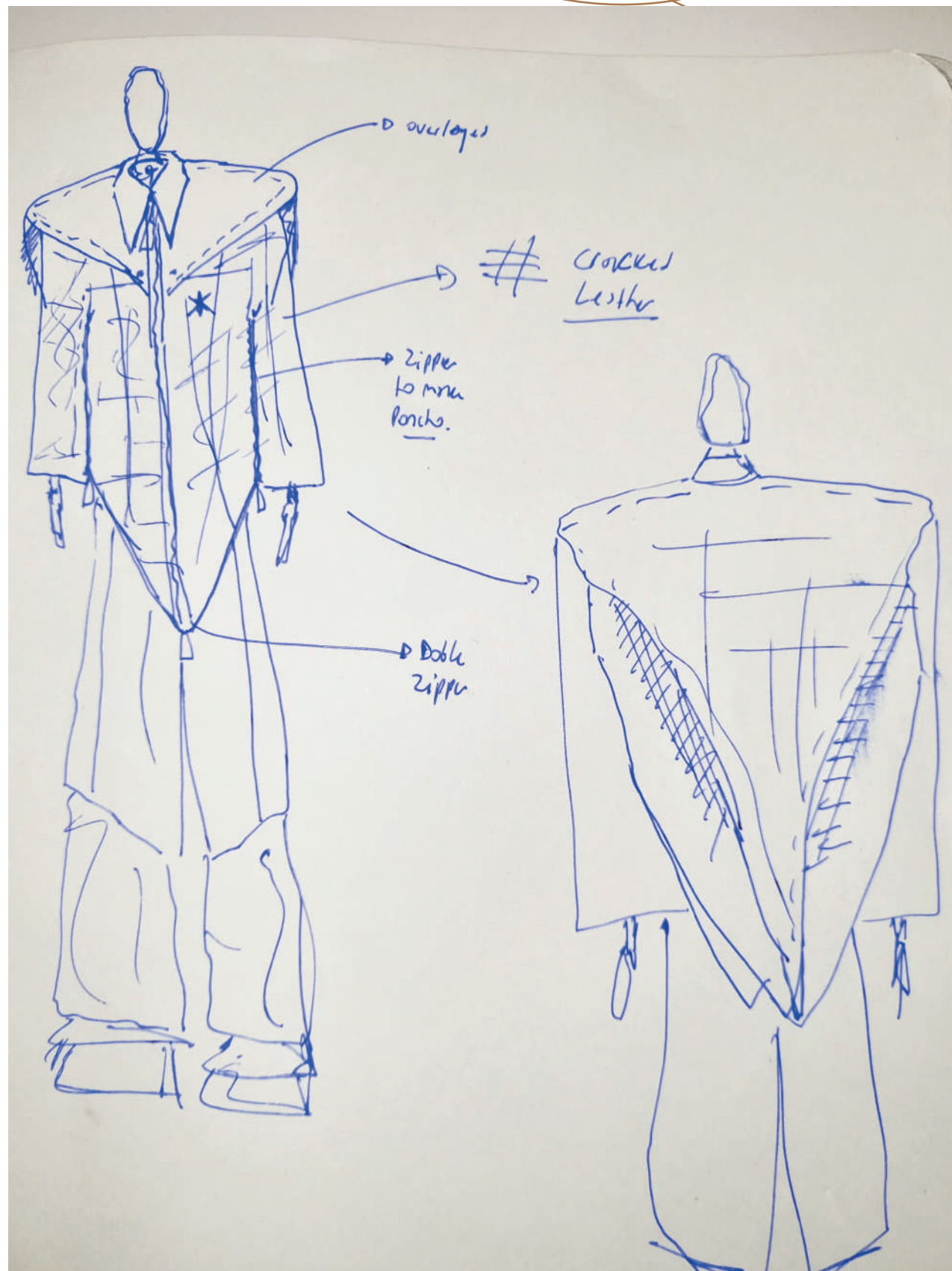


# Process





# Final





# Testing systems and leather



1. Main silhouette (left sleeve open and right sleeve closed closure location test).



2. Side view of sleeve with armpit line closure system closed.



3. Green - location and route that the removable closure would take to open and close the area.



4. Side view of sleeve with zipper under armpit open to achieve the "Poncho" silhouette



5. Observation of how the garment would look when the zipper located along the armpit line is open and removed.



6. Close-up of how the open sleeve would look.



7. Front view to show a morphological change that can be achieved thanks to the double carriage closure that would be on the front of the garment, also functioning as an access system to it.

These images were taken from a video in which I tested a jacket I had previously made from leftover leather. I decided to work on the shape and systems I wanted to achieve in the design for this competition.

The garment to be developed will not have the same proportions since a much larger and looser fit like that of a coat is sought.



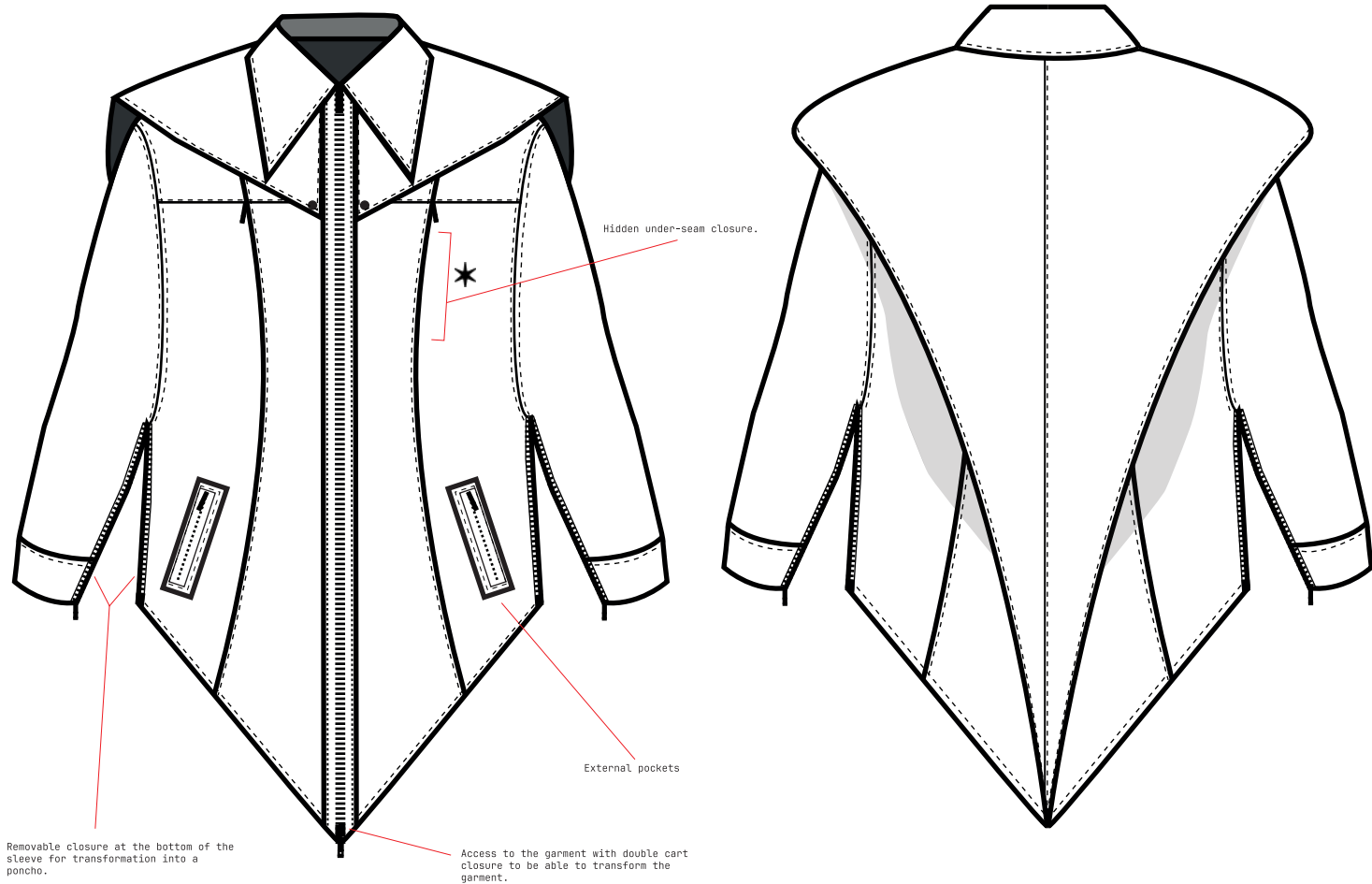
# • Testing systems and leather



Overlap test that references the system in which gauchos wear their garments.



## FLATS

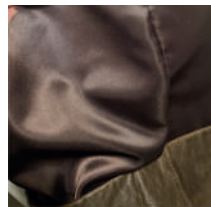


“GAUCHOS DE CIUDAD”  
DESIGNED BY. SIMON GIMENEZ CHIODI  
SEASON - AW24’  
01/06/2024



### Leather

Cowhide leather with a crackled effect referring to the land and pavement of the countryside and city. Donated by Kostume (Argentine design brand).



### Lining

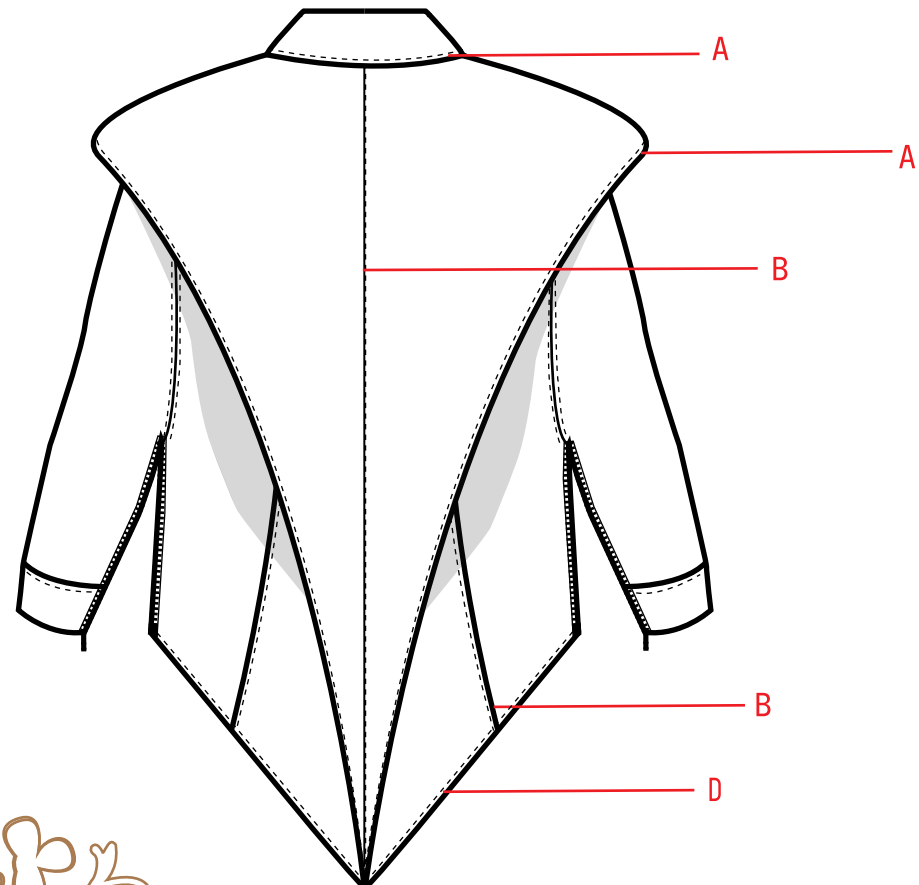
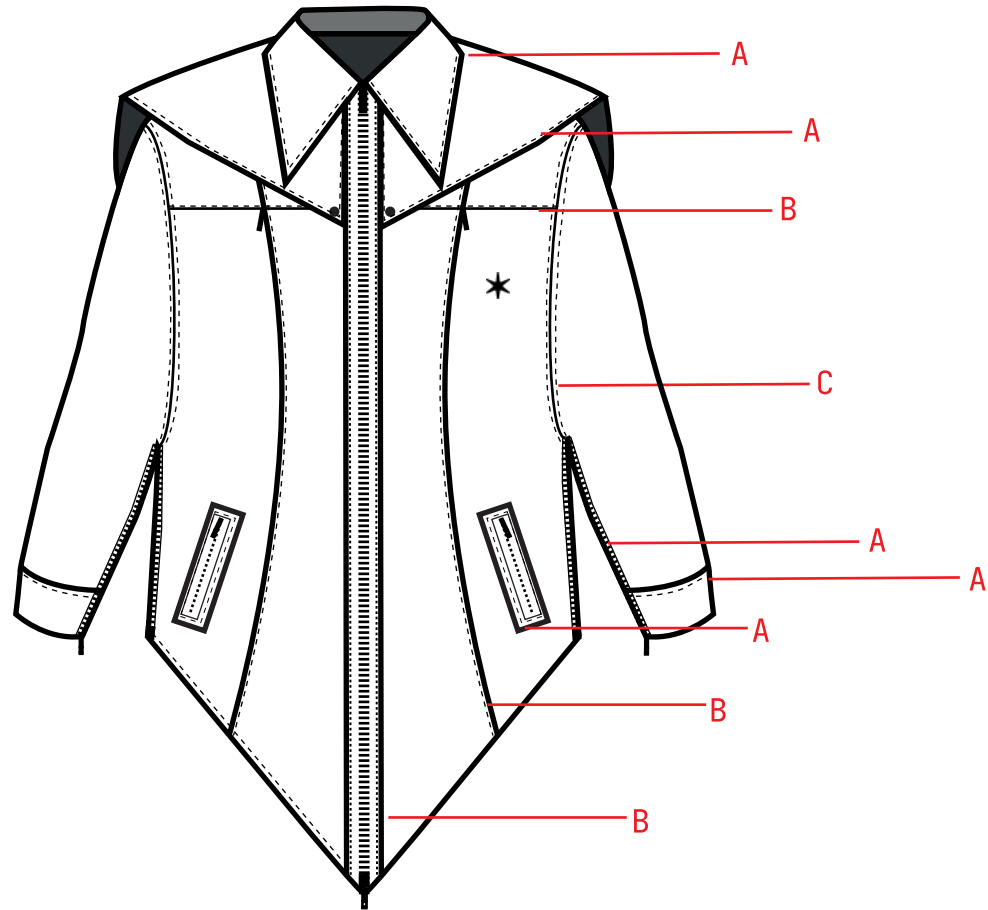
Satin repurposed from vintage jacket used for design testing.



### Padding

Cotton friselina. Donated by Kostume (Argentine design brand)

## SEAMS



## “GAUCHOS DE CIUDAD”

DESIGNED BY. SIMON GIMENEZ CHIODI

SEASON - AW24’

01/06/2024

**A**   
2 LAYER, RAW EDGES, TOP STITCH 4MM.

**B**   
1 LAYER, RAW EDGES, TOP STITCH 4MM.

**C**   
OPEN SEAM, TOP STITCH 5MM.

**D**   
TURNED EDGE, TOP STITCH 4MM.

