



BITTERSWEET SYMPHONY

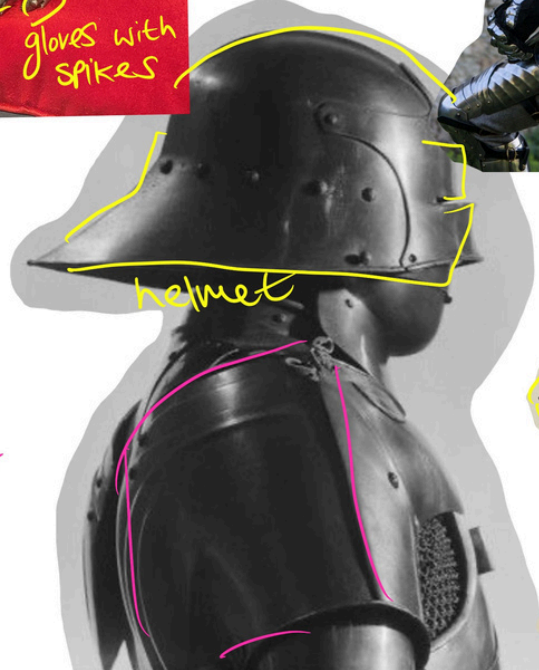
INTRODUCTION

People around the world live very complex lives that include epidemics, wars and other difficult events. While we live a complex reality, we don't always want to show outwardly what we really feel. In my project I examine how a garment can be a protective tool and enable the control between exposure and concealment that a person wants to adapt to himself.

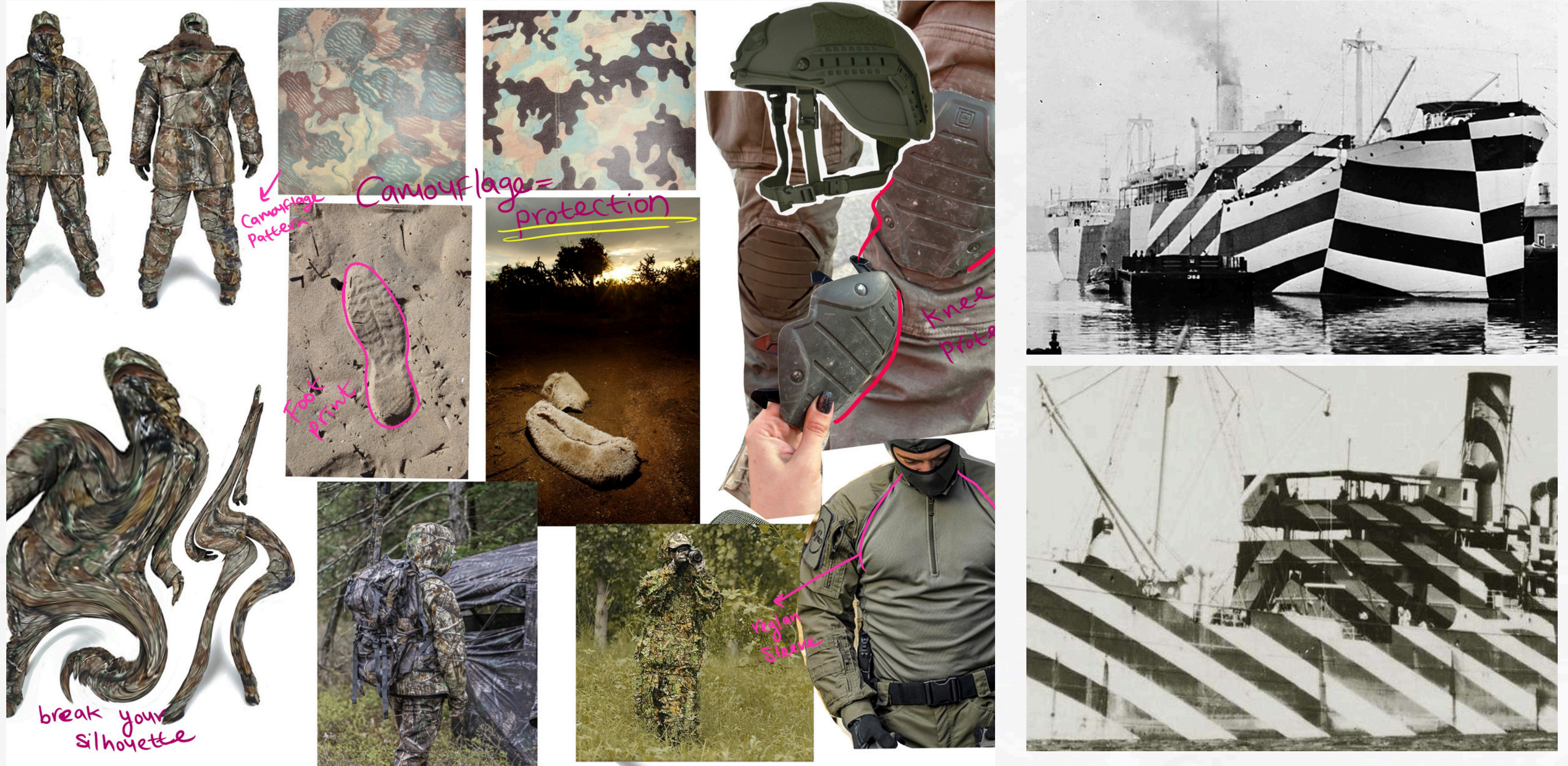
PROTECTIVE ELEMENTS



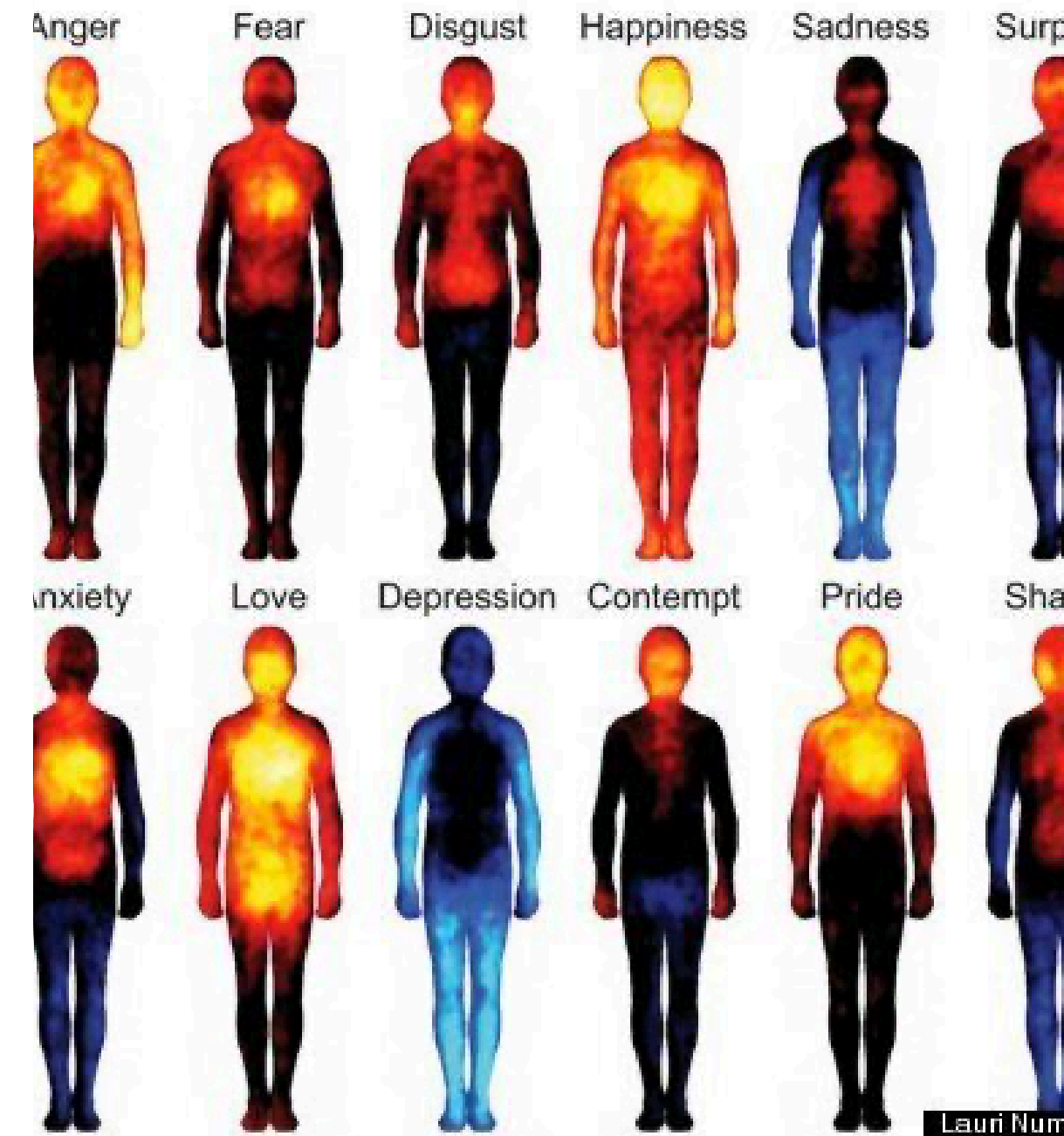
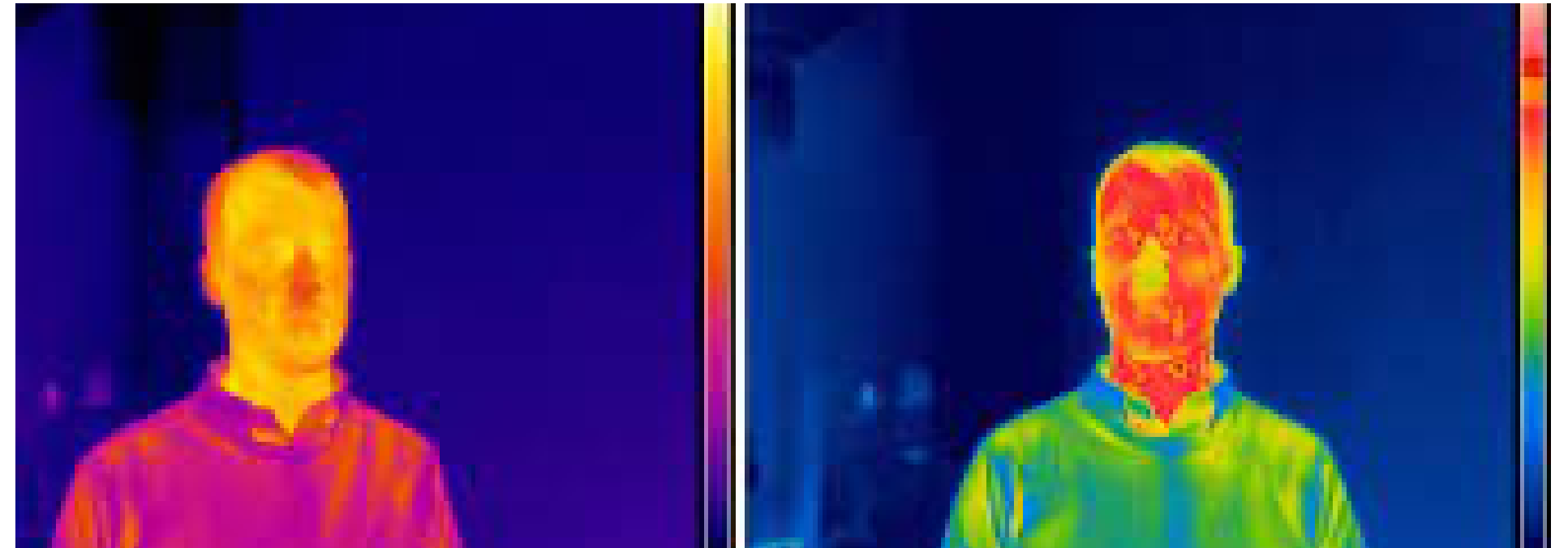
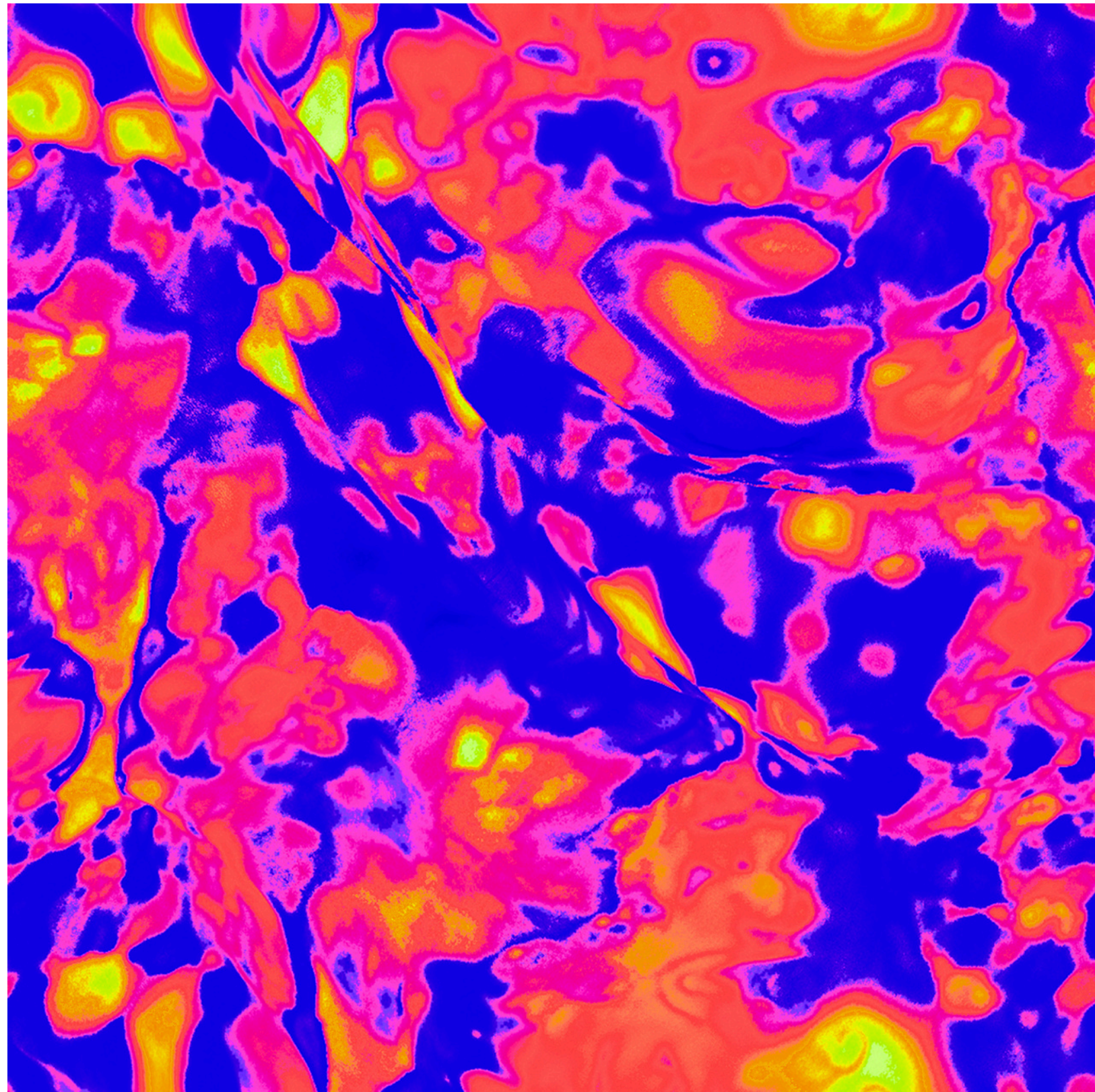
Knights protective elements



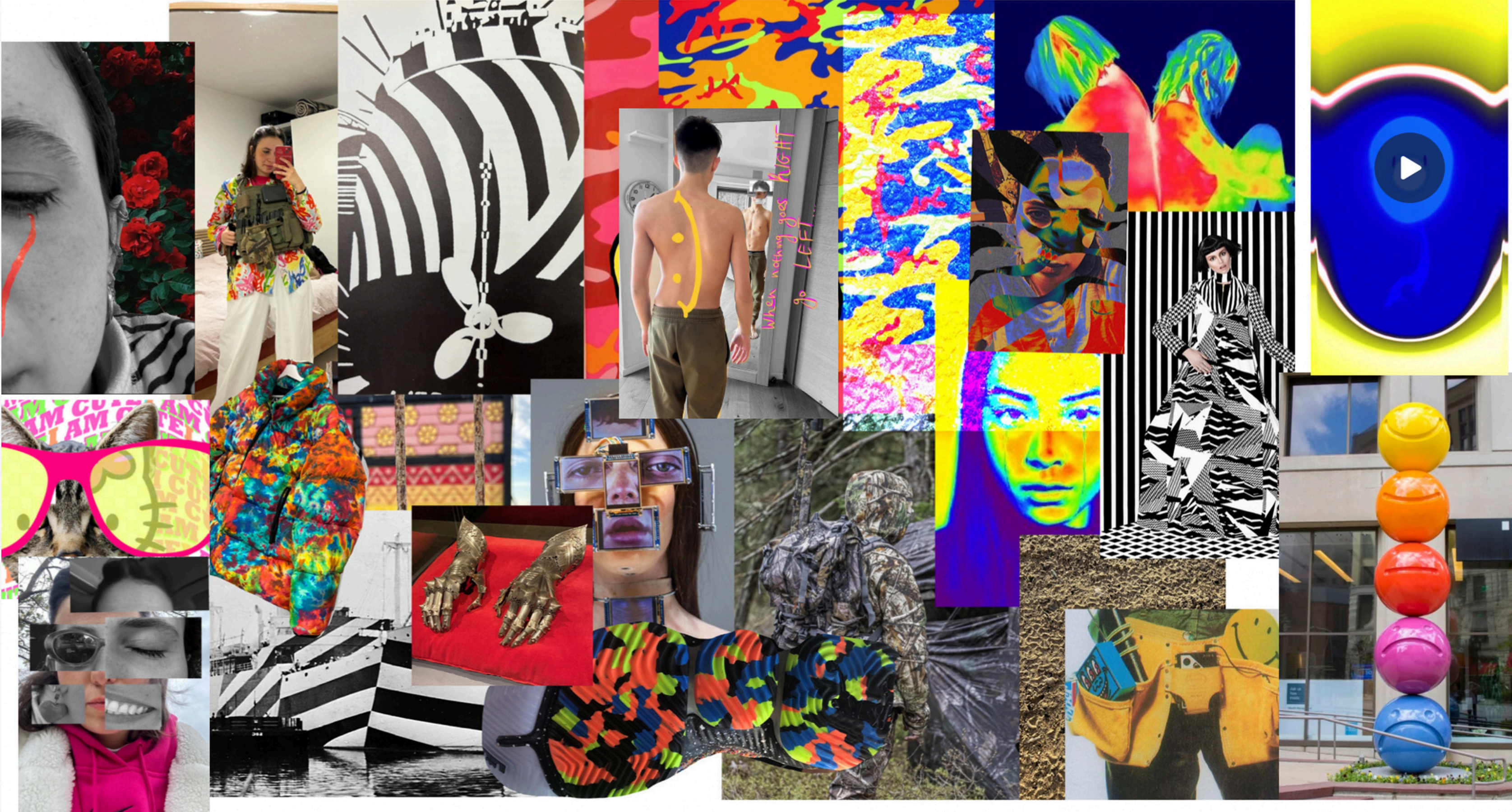
CAMOUFLAGE AS PROTECTION



THERMAL MOOD PRINT



INSPIRATION



FINAL COLLECTION





**IN THE COLLECTION, IT WAS IMPORTANT TO ME
TO CONVEY THE FEELING THAT EVEN IF THINGS
LOOK A CERTAIN WAY, THEY ARE NOT REALLY
SO, FOR EXAMPLE IN THE USE OF A PRINT OF
MILITARY BOOTS THAT LOOK REAL BUT ARE
PRINTED, A CREATION OF OPTICAL ILLUSION**

SHOES MAKING PROGRSS



original army boot



