

PREPARED FOR:

**RLSD**

PROJECT NAME:

**International Student  
Design Competition**

PREPARED BY:

**Bar Grexa, Founder  
of Atelier Cabella**

# Legacy in Leather

18-06-2025

+421915652341

hello@atelier-cabella.com

# 01 Concept Overview

In a world addicted to novelty, Atelier Cabella stands for something quieter, more radical: longevity. We return to the forgotten promise of true luxury — that the finest things are made to endure.

Our submission, Legacy in Leather, is a celebration of slow luxury: handcrafted, made-to-order, and built to age beautifully. This piece is designed not to follow trends, but to transcend them. It's made from full-traceability leather, sourced exclusively from tanneries offering complete visibility from hide to finish.

Every element — from thread to hardware — is meticulously selected and logged in a digital product passport. This embedded, scannable record chronicles provenance, materials, repairs, and the evolving story of the piece, turning a handbag into a living document of craftsmanship and care.

Rooted in the heritage of fine European leatherwork and crafted with the future in mind, this is more than a bag — it is a living heirloom. Designed to weather time, restore gracefully, and never be replaced — only repaired, reimaged, and remembered.

# 02 Design Focus

We present a multifunctional leather item—part wardrobe essential, part legacy piece—that embodies our restoration-first philosophy. Whether worn, carried, or displayed, it is designed to evolve gracefully with time, showing that true luxury lies in what we preserve, not replace.

Our design focus centers on heritage silhouettes reinterpreted for longevity — timeless styles that outlast fleeting trends. Each piece is conceived with repairability at its core, from reinforced stress points and modular construction. Seam placement and stitching techniques are carefully considered to allow for future disassembly and restoration. Materials are chosen not only for their beauty but for their ability to age gracefully and endure repairs.

# 03 Commercial Viability

Designed with scalability in mind, our submission balances elevated craftsmanship with simplified construction methods. The goal is to offer a luxury-quality piece that is feasible to produce in small or medium batches, using existing artisan networks and restoration workshops.

# Sustainability Considerations

---

01

## **Full-Traceability Materials**

We will exclusively use leather sourced from tanneries that provide complete transparency from hide to finish, ensuring ethical sourcing, reduced environmental impact, and alignment with regenerative agricultural practices where possible.

02

## **Built-In Repairability**

Each design is intentionally crafted for disassembly and restoration — from replaceable components to repair-friendly construction. This reduces waste and extends product lifespan, aligning with circular design principles.

03

## **Digital Product Passport**

Every item includes a scannable digital passport that logs provenance, materials used, and repair history — encouraging transparency, responsible ownership, and long-term engagement with the piece.

04

## **Made-to-Order, Not Mass-Produced**

To minimize overproduction and unnecessary waste, our pieces are made to order. This slow manufacturing model ensures thoughtful consumption and avoids the environmental costs of unsold inventory.

Atelier Cabella's approach to design and craftsmanship aligns with key UN Sustainable Development Goals, embedding sustainability into every stage of the product lifecycle.

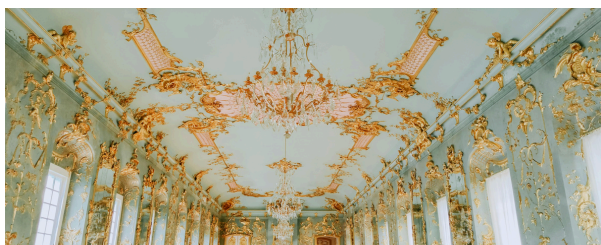
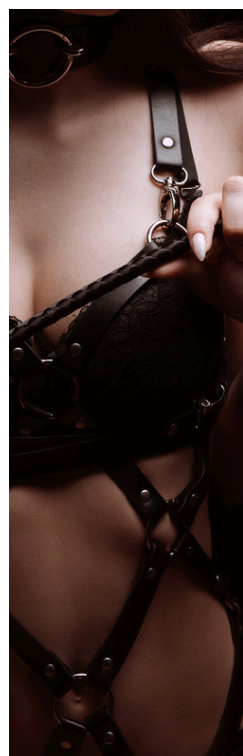
- **SDG12: Responsible Consumption and Production:** Our focus on durability, repairability, and circular design directly addresses SDG12—promoting sustainable consumption patterns, reducing waste, and encouraging reuse and repair in line with global efforts
- **SDG8: Decent Work and Economic Growth:** Our reliance on skilled European artisans, ethical labor practices, and preservation of traditional craftsmanship contributes to inclusive economic growth and dignified employment within the luxury goods sector

# Sketches

---



# Design Inspiration



# Technical Specifications

---

## 1. Materials

- Primary Material: Full-grain leather
- Origin: To be confirmed
- Tannery: TBC, certified by Leather Working Group (Gold Rated)
- Traceability: 100% back to farm
- Lining (if any): 100% leather
- Thread: Waxed linen thread (European origin) & bonded nylon thread (Country of origin: Thailand)
- Hardware: Solid brass (Sourced from China)
- Edge Finish: Hand-painted with water-based edge coat (solvent-free)

## 2. Construction & Repairability

- Modular panel construction with visible, accessible stitching lines
- Reinforced stress points using reinforcement materials \
- Hardware fixed with screw components for easy replacement
- All parts can be disassembled for repair or component replacement except for gusset and parts of the flap which are glued to stabilizer

## 3. Sustainability & Circularity

- Made-to-order model – no overproduction
- Digital product passport embedded via serial number
- Materials used: Leather working group certification and tannery details
- Repair log: Owner notes / care history
- Restoration-ready design: Designed for in-house and third-party artisan repair
- Packaging: Recycled cardboard box, cotton dust bag, zero plastic

## 4. Production & Lifecycle

- Production site: Prague, Czech Republic
- Artisan involvement: One named artisan per bag
- Estimated production time: 8-10 weeks
- Expected lifespan: 20+ years with proper care
- End-of-life plan: Return-to-maker program for repurposing/restoration

# Prototypes - Design No. 1



# Prototypes - Design No. 2

---

