

Everyday Woman

The everyday woman has inspired me profoundly, especially through my mother, a single parent who was the very essence of resilience and love. Her remarkable strength in raising three children alone was more than commendable; it was awe-inspiring. Even as a young girl, I dreamed of becoming even a fraction of the extraordinary woman she was, if that was possible. To me, she was nothing short of a superhero.

Her dedication knew no bounds—waking up at 4 a.m. and often not resting until nearly midnight, all to provide for us. I was in awe of her tireless work ethic, as she willingly sacrificed her own well-being to ensure her children had a brighter future. It moved me deeply to witness her unwavering hope and relentless encouragement every single day.

She possessed a unique magic, turning our tears into laughter, ensuring that joy always overshadowed our fears. Amidst all her struggles, she somehow found the strength to nurture us with love and warmth. This powerful influence inspired me to create the collection titled "Everyday Woman," a tribute to the undying spirit of women like her.

To truly honor them with every fiber of our being, we pour our hearts into every action and word, showing just how deeply we respect them.

Apparel Design Specifications

Two-Piece Set: Leather Jacket and Skirt

1. Leather Jacket

This fitted leather jacket features a strong architectural design that enhances the upper body's volume with a tailored, contoured fit throughout the waist and hips, creating a modern silhouette.

- **Shoulders:** The jacket begins with high, double-layered shoulders, padded internally to create a bold, elevated effect. Interfacing supports the sharp geometry and dimensional presence.
- **Sleeves:** The three-quarter length sleeves are cut slim and slightly tapered, ending just below the elbow to offer a refined contrast to the strong shoulder line.
- **Collar:** A high Chinese collar stands 4–5 cm tall, fitting closely around the neck with minimal seam detailing for a clean, authoritative neckline.
- **Fit:** Tailored through the torso with gentle waist shaping that hugs the body's natural curve. The hem hits slightly below the hips for a sharp, contoured finish.
- **Pockets:** Includes two cargo pockets at the side seams, positioned slightly forward for visual accessibility. The boxed construction with flap closures adds utility and subtle volume to the lower part without disrupting the jacket's clean lines.
- **Materials:**
 - **Shell:** 100% genuine medium-weight leather with a smooth or matte finish.
 - **Lining:** Breathable satin or stretch polyester for enhanced comfort and ease of movement.
 - **Padding:** High-density foam and layered felt at the shoulders for added structure.
 - **Closure:** Center front closure with a concealed zipper; pocket flaps may use snap buttons or hidden Velcro.

2. Leather Skirt

This sleek, fitted leather skirt is designed to complement the structured leather jacket.

- **Design Elements:** Features a deconstructed fringe peplum and braided cord detailing just below the hip line, with a bold front-center opening 'gap' measuring 4–5 inches. The peplum adds volume and movement, while the central opening introduces edge and asymmetry.

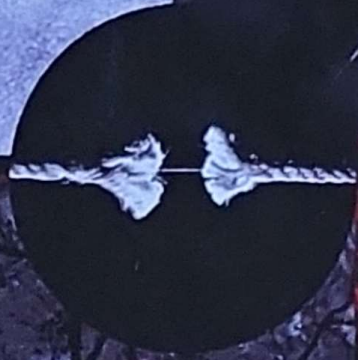
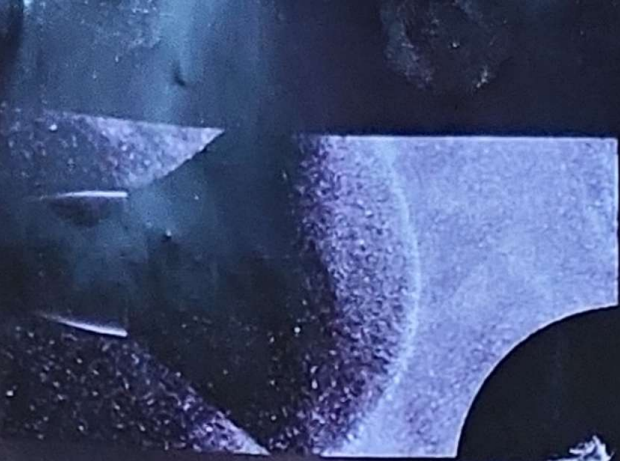
Silhouette: High-waisted, body-hugging pencil silhouette ending at the knee, with a faced waistband.

Materials:

- Genuine leather
- Stretch satin poly blend

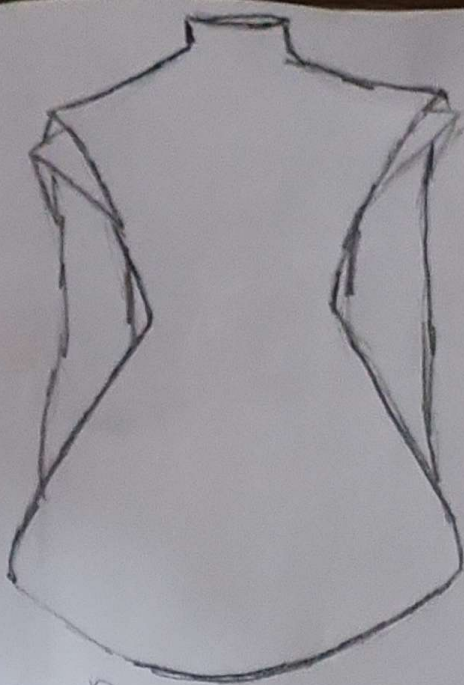
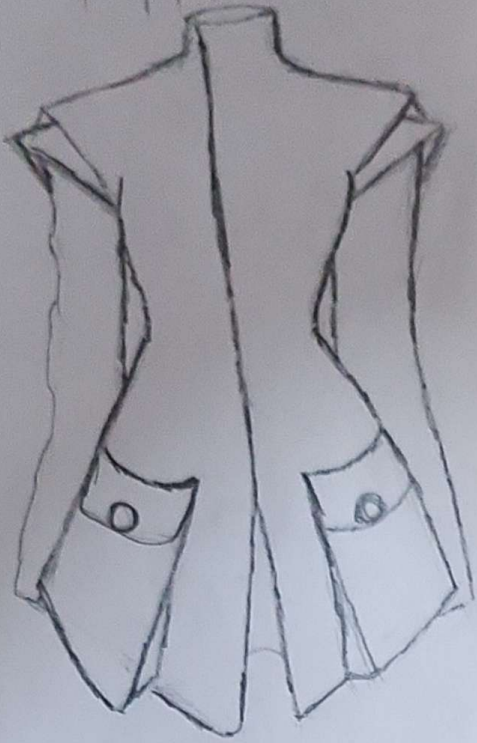
- Peplum in either the same leather or a contrasting finish
- Zipper: invisible zip

3 Sleeve Lace Material



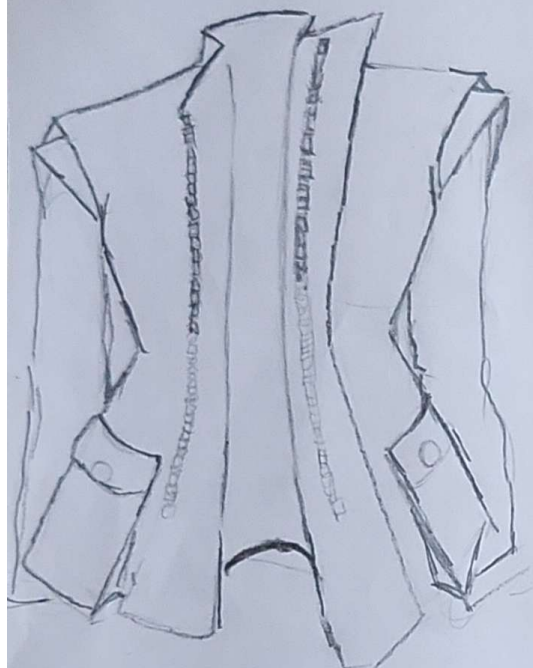


FRONT



BACK

FRONT SKIRT



BACK SKIRT

OPEN
JACKET

