





Yige Wang  
Spring/Summer 2024  
WATCHTOWER



## CONCEPT

Watchtower is a visual discourse on the philosophy of the body, celebrating the softness within the structured discipline and exploring the identity when rules become a canvas for individual expression. This collection initiated by a personal journey of revisiting the ancient city wall of Xi'an, draws inspiration from Michel Foucault's concept of categorization, delving into the philosophy of the body and the structured orders and rules that govern our existence.



“Categorisations are produced by the very act of emphasizing some characteristics and transposing them into concepts, thereby eliminating other characteristics and neutralizing them as far as possible.”

—Paul-Michel Foucault







INSPIRATION

The research started with the visual resemblance of the concept. I envisioned a conflict between texture and materials, choosing leather and knit fabric as they are representative for me. After experimenting, leather straps and stretchy fabric proved the most effective. Sewing leather straps onto the jersey created gaps when stretched, capturing the essence of organic existence. This technique can be applied to various body parts to achieve different shapes based on their natural curves.



After considering several options, I found the braid pattern, commonly used in sweaters, to be the best choice. To achieve the desired effect, soak the leather piece and place it on the resin mold. Then, beat and tap it repeatedly until it becomes luminous, indicating the process is complete. The final step is wet molding, which also captures the essence of the concept.





MATERIAL CHART

F\_01 Denim  
100%-cotton

F\_02 Cady  
70%Silk-20%Viscose-10%Polyester

F\_03 Ponte-de-roma  
80%Polyester-10%Rayon-10%Spandex

F\_04 Pinstripe  
70%Wool-20%Cotton-10%Polyester

L\_05 Bonaudo

L\_06 Vegetable Tanned

L\_07 Nappa  
50%Polyurethane-50%Polyester

L\_08 Buttero

L\_09 Incas

L\_10 Buttero

F\_11 Georgette  
90%Silk-10%Polyester

T\_12 Amber Bead

T\_13 Waxed Cord

COLOR CHART

C\_01 Ecrú 11-0809TPX

C\_02 Winter Wheat 14-1119TPX

C\_03 Winter Wheat 19-1241TPX

C\_04 Tortoise Shell 14-1119TPX

C\_05 Cappuccino 19-1220TPX

C\_06 Deep Taupe 18-1312TPX

C\_07 Jet Set 19-5708TPX

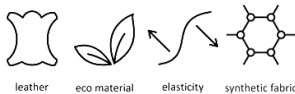
C\_08 Black 19-0303TPX







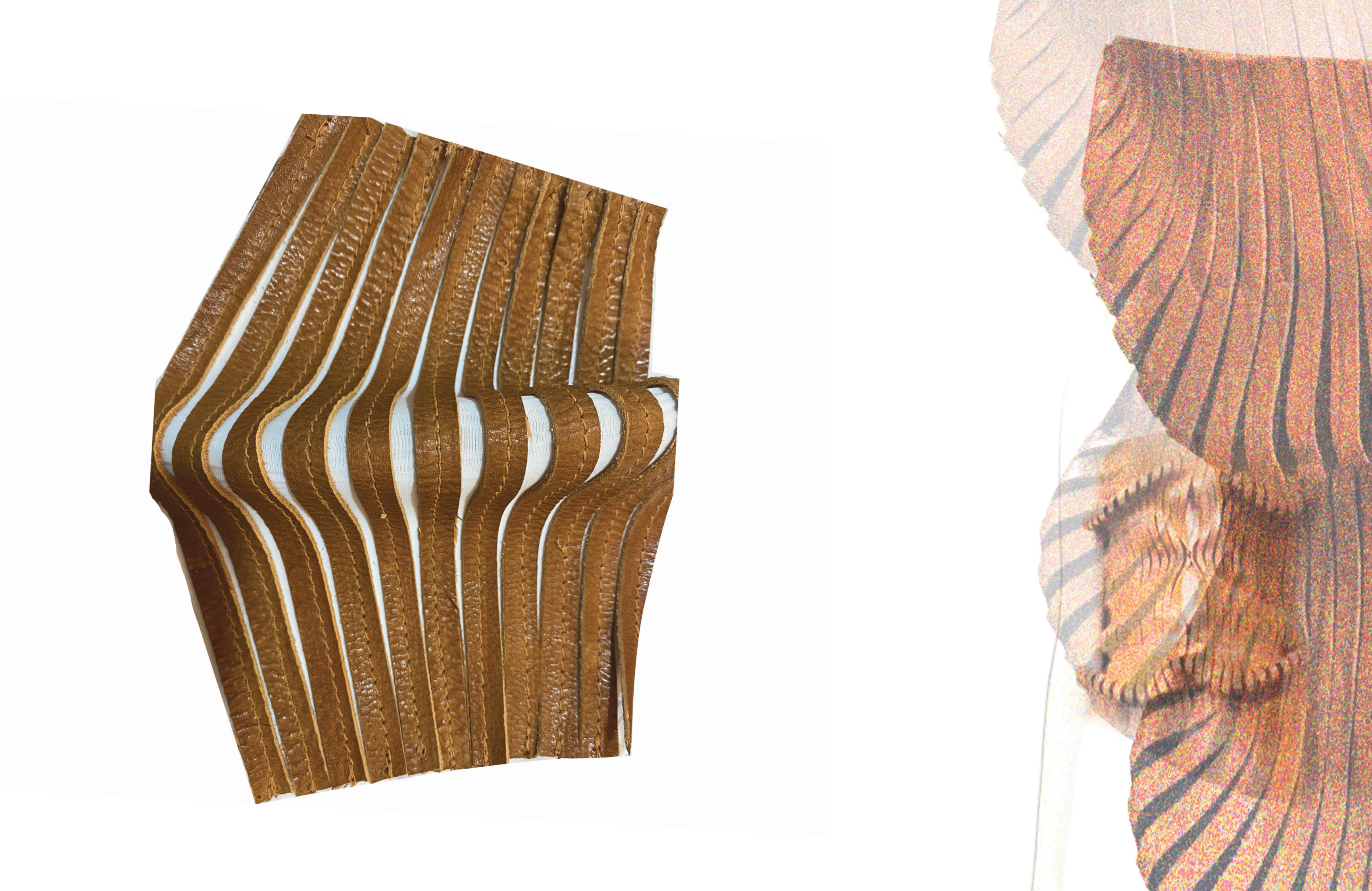




Technique: Sewing Leather Straps on Knit Fabric with Boning

**Description:**  
This manipulation technique involves sewing leather straps onto knit fabric and incorporating boning while stretching the material. The process creates a structured yet flexible piece that combines the durability of leather with the comfort and versatility of knit fabric. The boning provides additional support and shape, making this method ideal for creating sculptural garments and accessories.

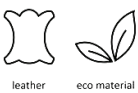
- Process:**
1. Preparation: Cut the leather straps and knit fabric to the desired size and shape. Ensure all materials are ready and your sewing machine is equipped with appropriate needles.
  2. Stretching: Secure the knit fabric in a stretching frame or use another method to keep it taut.
  3. Positioning: Arrange the leather straps on the knit fabric in your desired pattern or design.
  4. Sewing: Carefully sew the leather straps onto the knit fabric, ensuring each stitch is secure. Use a sewing machine suitable for handling both materials.
  5. Adding Boning: Sew boning along the lines where extra support and structure are needed. The boning should be sewn while the fabric is still stretched to maintain tension.







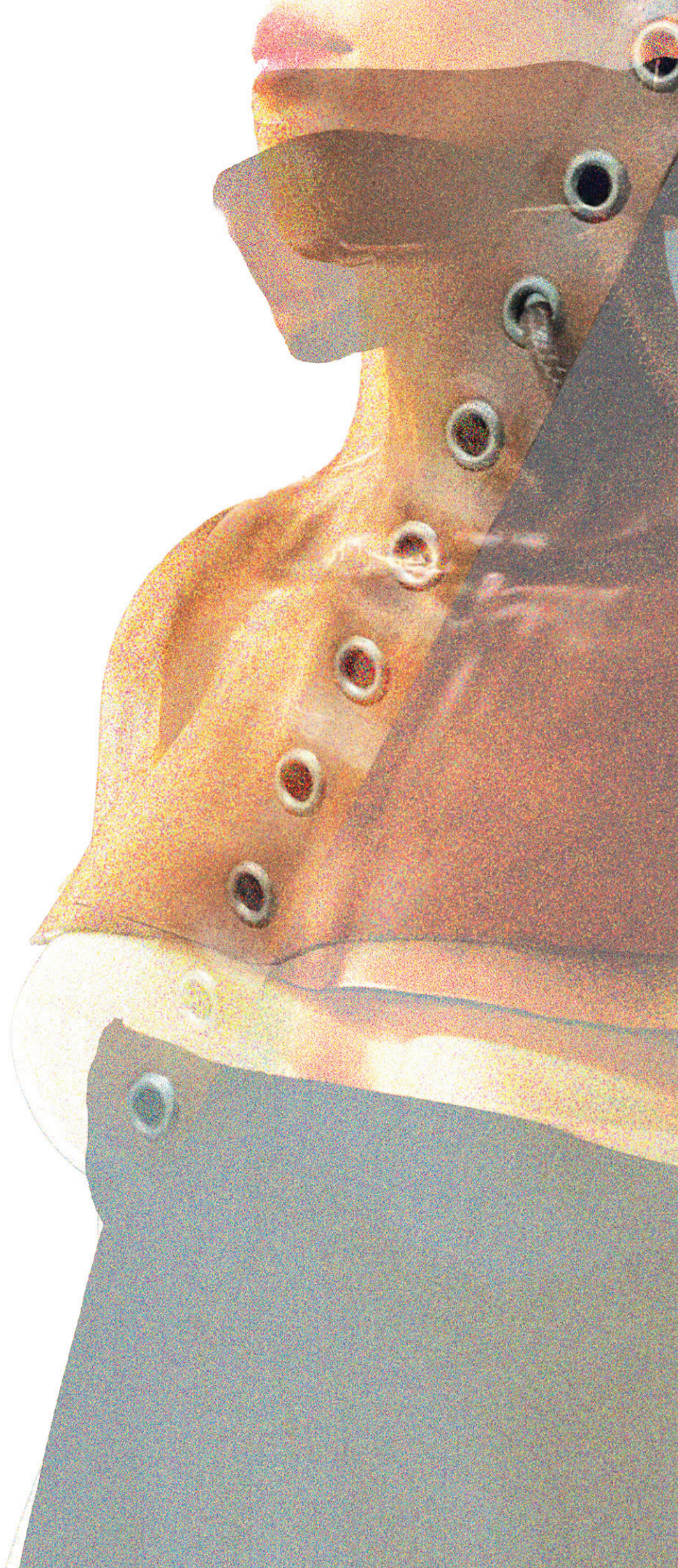




Technique: Wet Molding

**Description:**  
The wet molding technique involves soaking vegetable-tanned leather in water to make it pliable. Once flexible, the leather is shaped over a mold or form that mimics the contours of the chin, shoulders, and upper chest. As the leather dries, it hardens and retains the shape of the form, creating a precise, anatomical fit. This method combines traditional craftsmanship with innovative design, resulting in a unique, form-fitting piece.

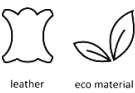
- Process:**
1. Soaking: Immerse the leather in water until it becomes pliable (15-30 minutes).
  2. Molding: Place the wet leather over the mold, stretching and shaping it to fit smoothly.
  3. Securing: Use clamps or weights to hold the leather in place as it dries.
  4. Drying: Allow the leather to dry completely, which may take several hours to overnight.
  5. Finishing: Trim excess leather, refine edges, and add any decorative elements or protective finish.











Technique: Wet Molding

Description:

The wet molding technique involves soaking vegetable-tanned leather in water to make it pliable. Once flexible, the leather is shaped over a mold or form that mimics the contours of the chin, shoulders, and upper chest. As the leather dries, it hardens and retains the shape of the form, creating a precise, anatomical fit. This method combines traditional craftsmanship with innovative design, resulting in a unique, form-fitting piece.

Process:

1. Soaking: Immerse the leather in water until it becomes pliable (15-30 minutes).
2. Molding: Place the wet leather over the mold, stretching and shaping it to fit smoothly.
3. Securing: Use clamps or weights to hold the leather in place as it dries.
4. Drying: Allow the leather to dry completely, which may take several hours to overnight.
5. Finishing: Trim excess leather, refine edges, and add any decorative elements or protective finish.











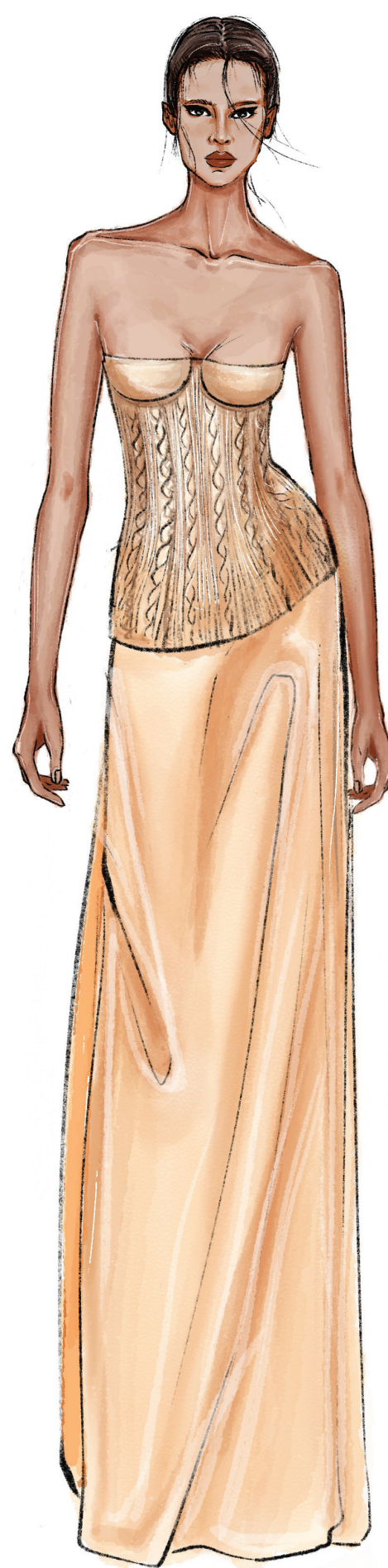
Outfit\_1



Outfit\_2



Outfit\_3



Outfit\_4

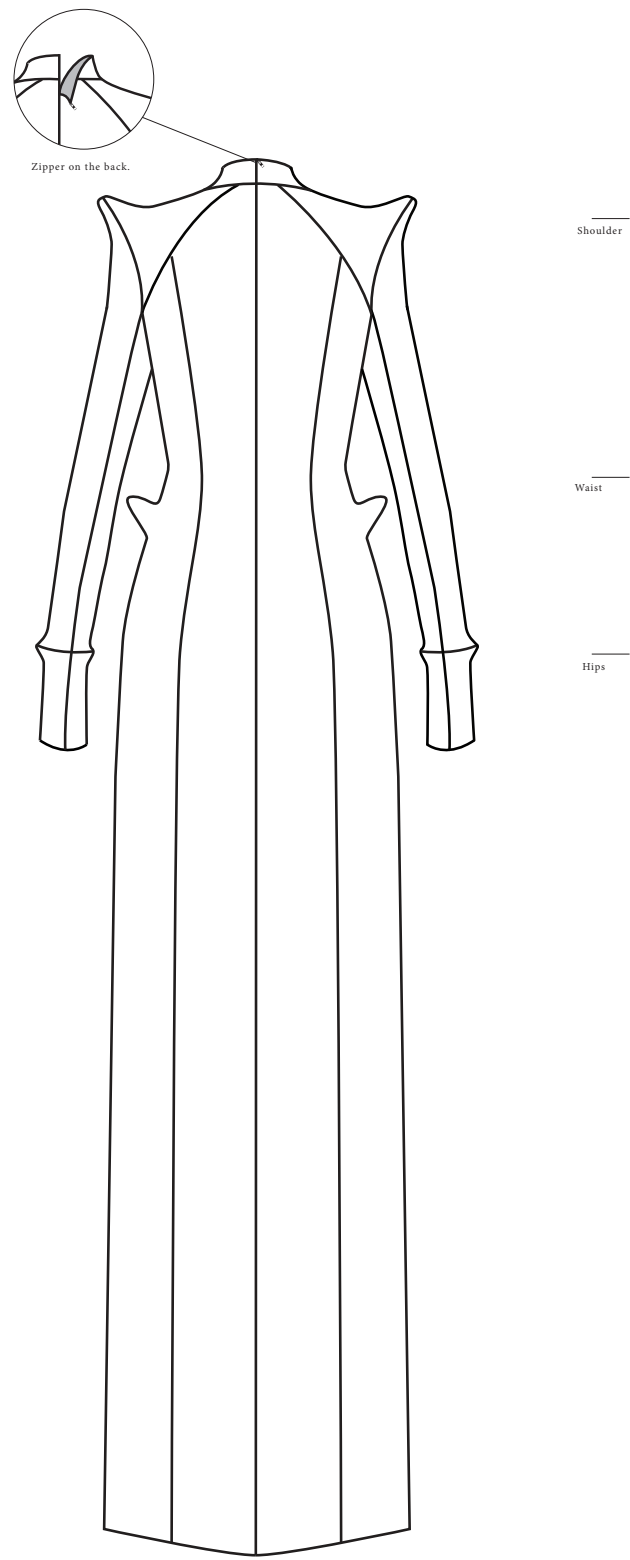


Outfit\_5

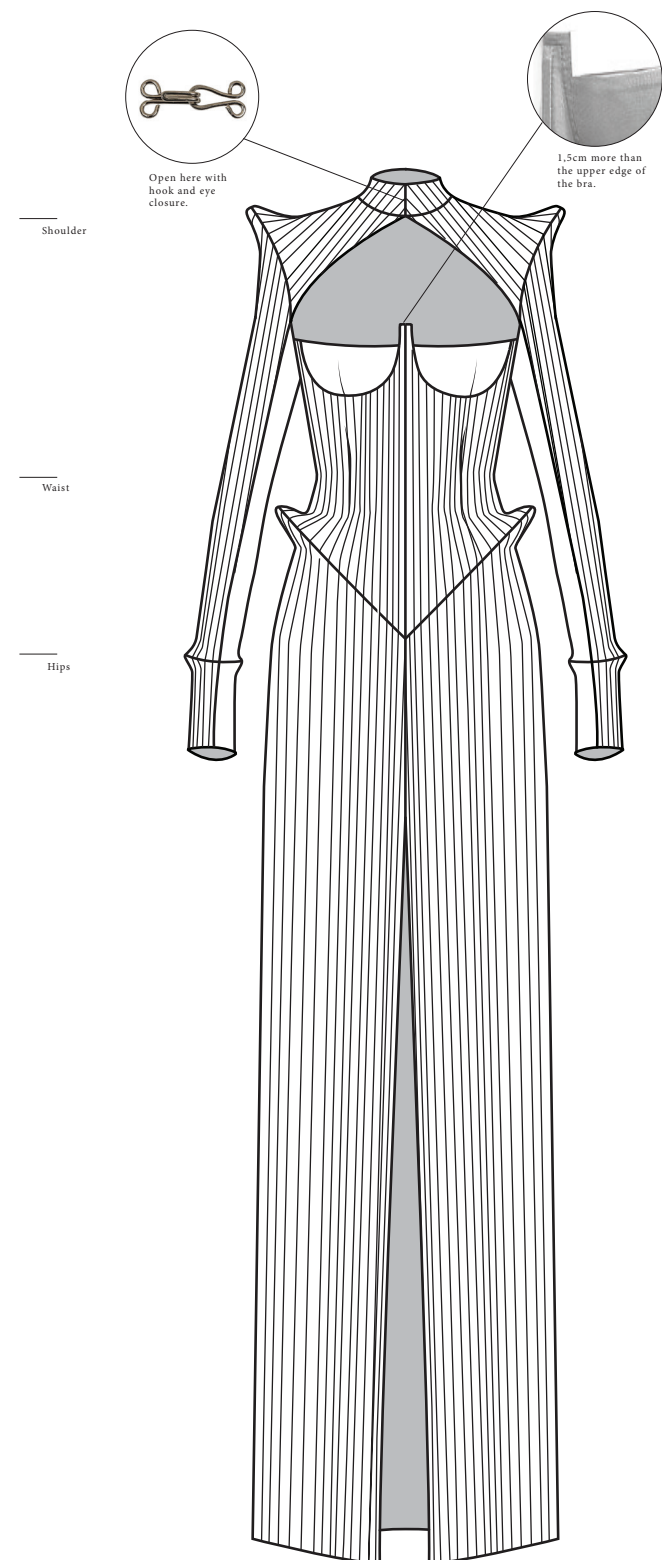


Outfit\_6





Back



Front

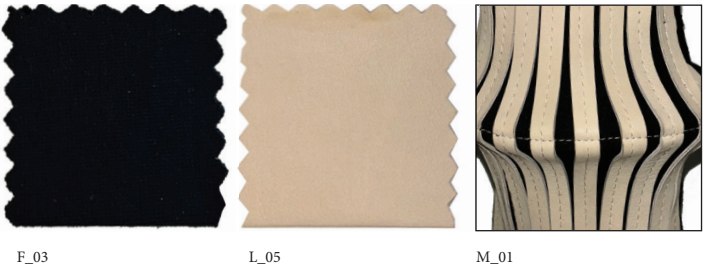
WATCHTOWER



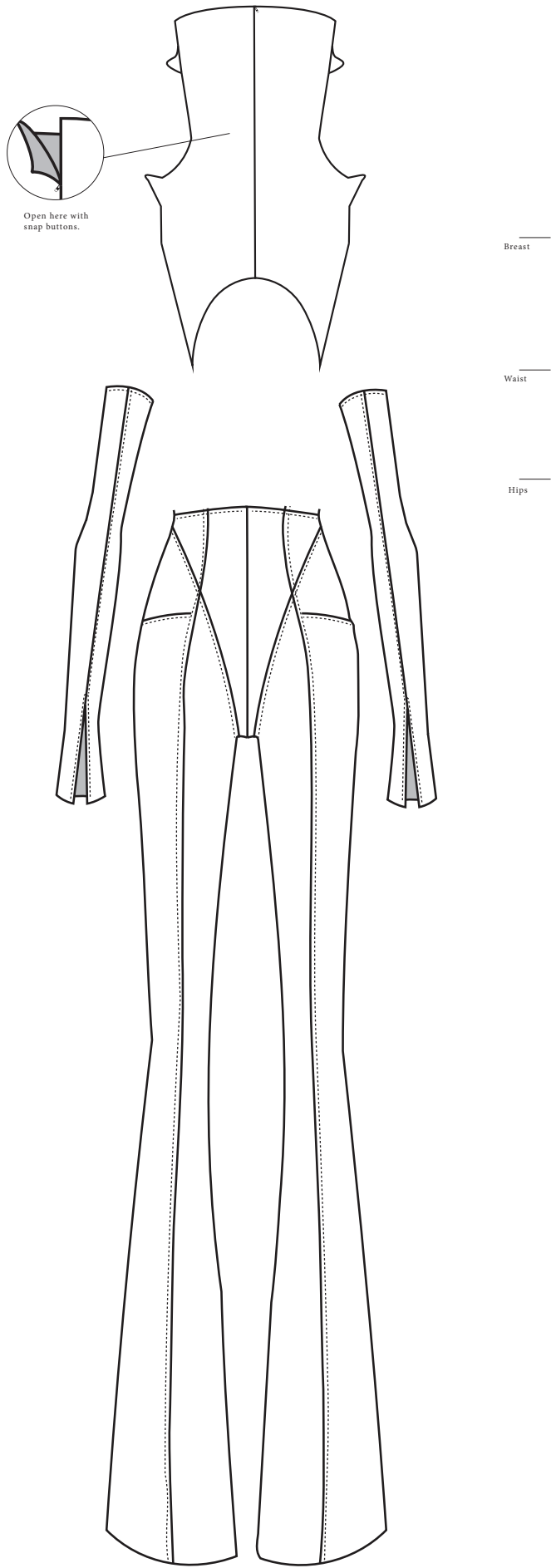
PRODUCT CHART

Outfit\_1

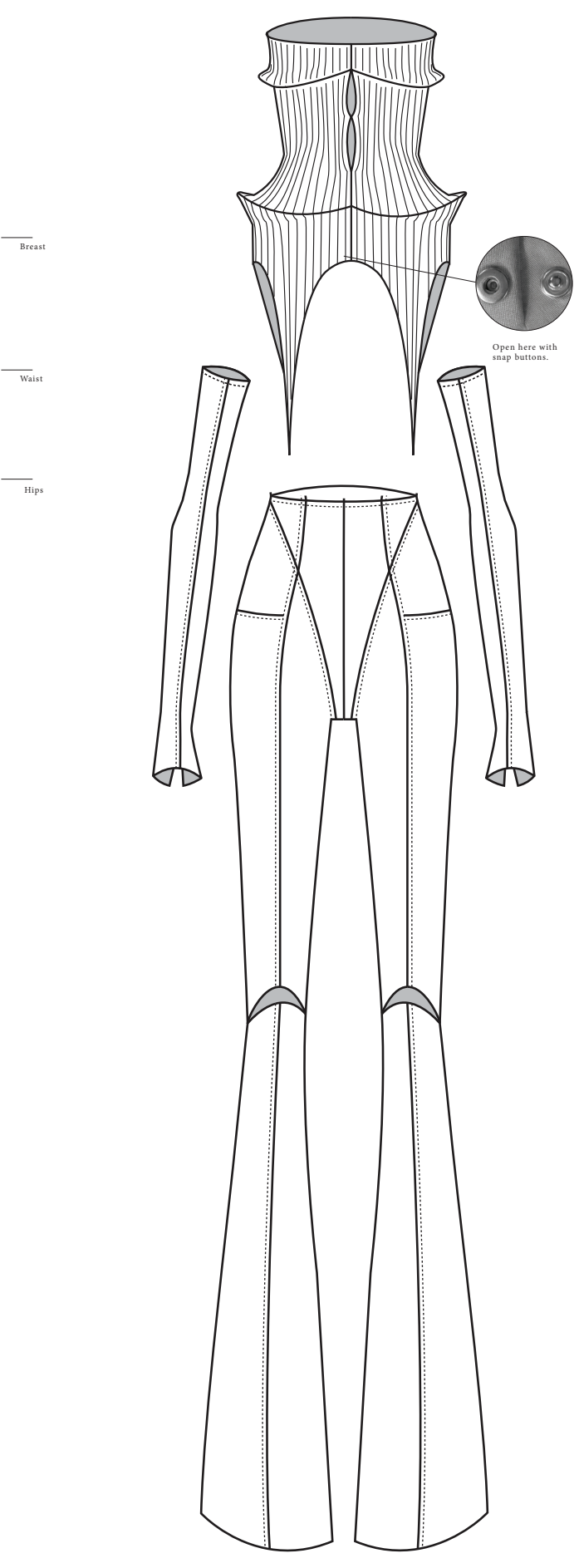
Long coat with leather manipulation all over the front. Bonings are applied to the pelvis, shoulders and wrists to create the strected effect. Leather straps are dettattached 10cm from the hem.







Back



Front

WATCHTOWER

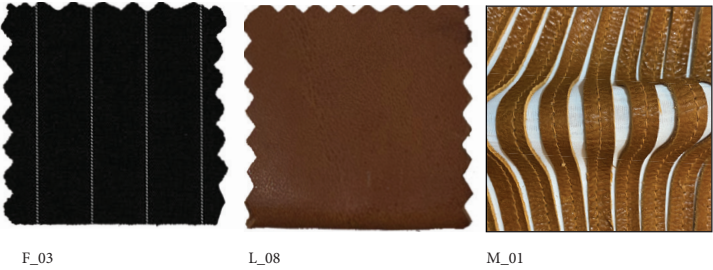


PRODUCT CHART

Outfit\_2

Corset with leather strap manipulation. Boning are applied at the lower breast and the waist.

Semi-sheer asymmetric skirt with pieces of straps attached between the hem of skirt and the corset.







Back



Front

WATCHTOWER



PRODUCT CHART

Outfit\_4

Corset dress with manipulation of molded leather in a braid pattern. An asymmetrical skirt is attached to the waist, and hand stitching creates the folds.



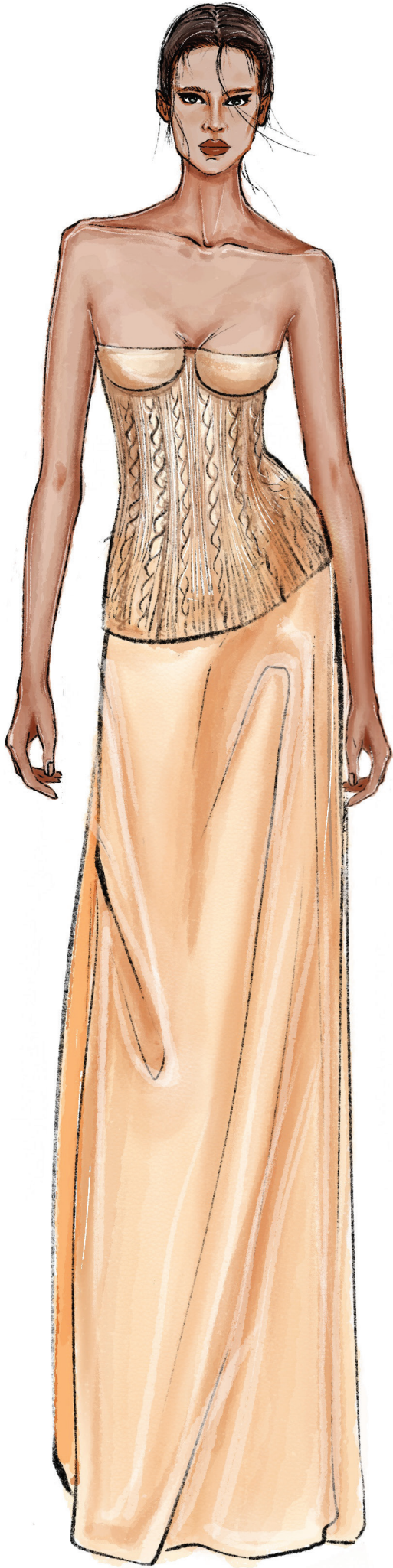
F\_03



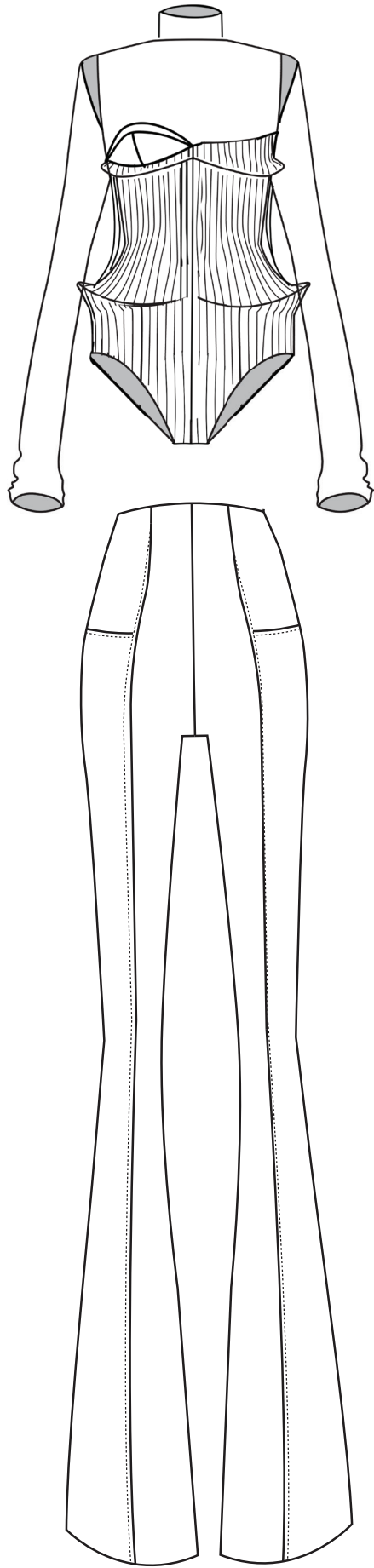
L\_05



M\_03







Shoulder

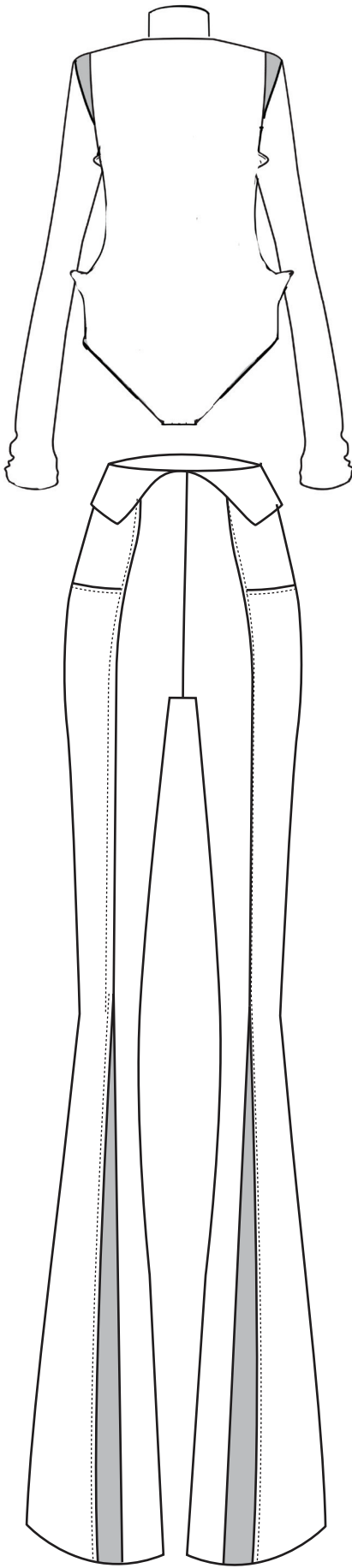
Waist

Hips

Waist

Hips

Back



Shoulder

Waist

Hips

Waist

Hips

Front

WATCHTOWER



PRODUCT CHART

Outfit\_5

Vest in molded leather opens on the sides.  
Trousers are attached by snaps to the vest over  
the waist. Molded leather belts and cords with  
beads hang around the waist and drape down.



F\_03



L\_05



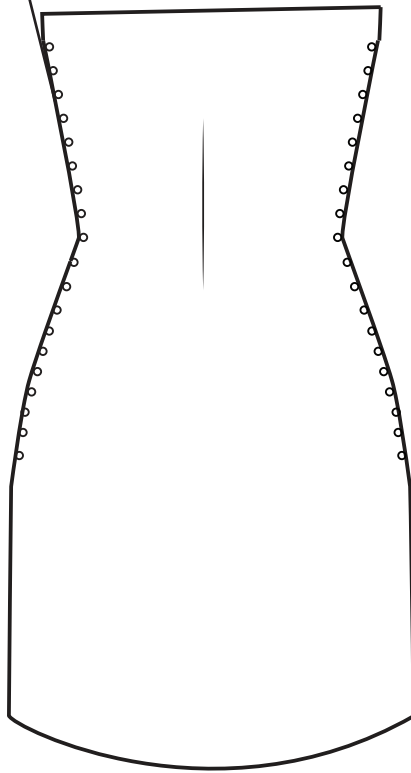
M\_03







Eyelets are applied here, closed with leather rope.



Shoulder

Waist

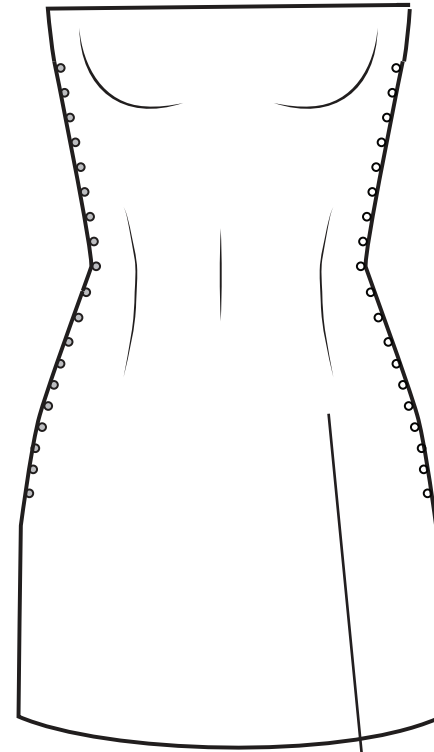
Hips

Back

Shoulder

Waist

Hips



Cross stitch over shoulder seam.

Front

WATCHTOWER



PRODUCT CHART

Outfit\_3

Leather molded top from the upper breast to the lower lips, closed by leather cords through eyelets. Pinstripe jumpsuit with a corset, slits on the back of the wrist and knee.



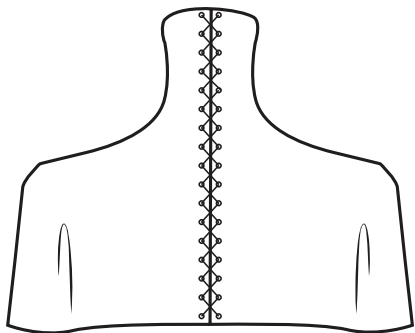
L\_09



M\_03



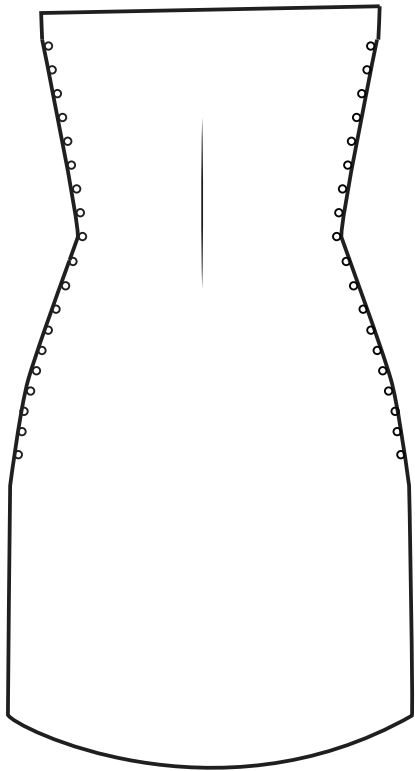




Shoulder

Waist

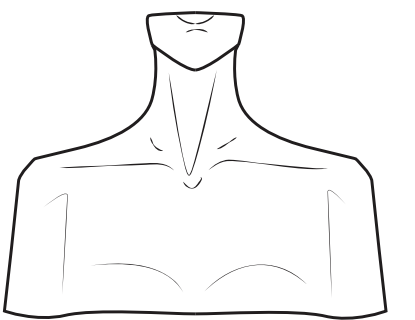
Shoulder



Waist

Hips

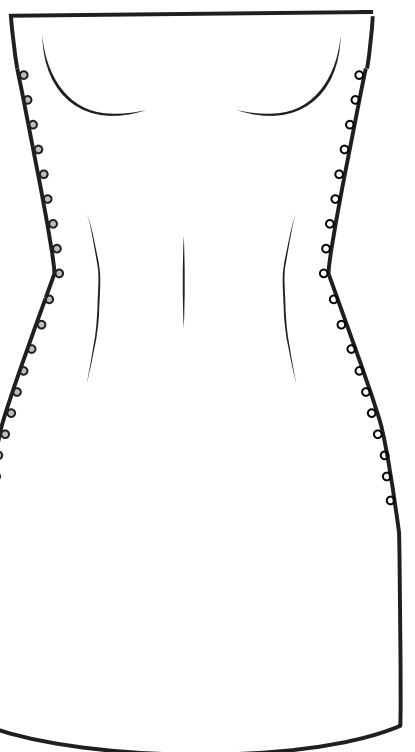
Back



Shoulder

Waist

Shoulder



Waist

Hips

Front

WATCHTOWER



PRODUCT CHART

Outfit\_6  
Leather molded corset opens by eyelets on the sides. Dress with gathering around the shoulder and hips, zipper on the back.



L\_10



M\_02

