

REAL
LEATHER.
STAY
DIFFERENT.
2025

Royal Plume Bag

Blending Nature with Style

Create Real Leather Product with Slow Fashion
Concept Blending with Timeless Design



**REAL
LEATHER.
STAY
DIFFERENT.**

2025

PROJECT INTRODUCTION

INTRODUCTION

Promote Slow Fashion

- ❖ Slow fashion is all about sustainability, ethical production, and **timeless design—making** it a perfect fit for your Royal Plume Bag : A Peacock-Inspired Bag Design project.
- ❖ The **Peacock-Inspired Bag Design** merges artistic elegance with the principles of slow fashion, **creating a product that is both visually stunning and environmentally responsible.**



LEATHER.
STAY
DIFFERENT.
2025

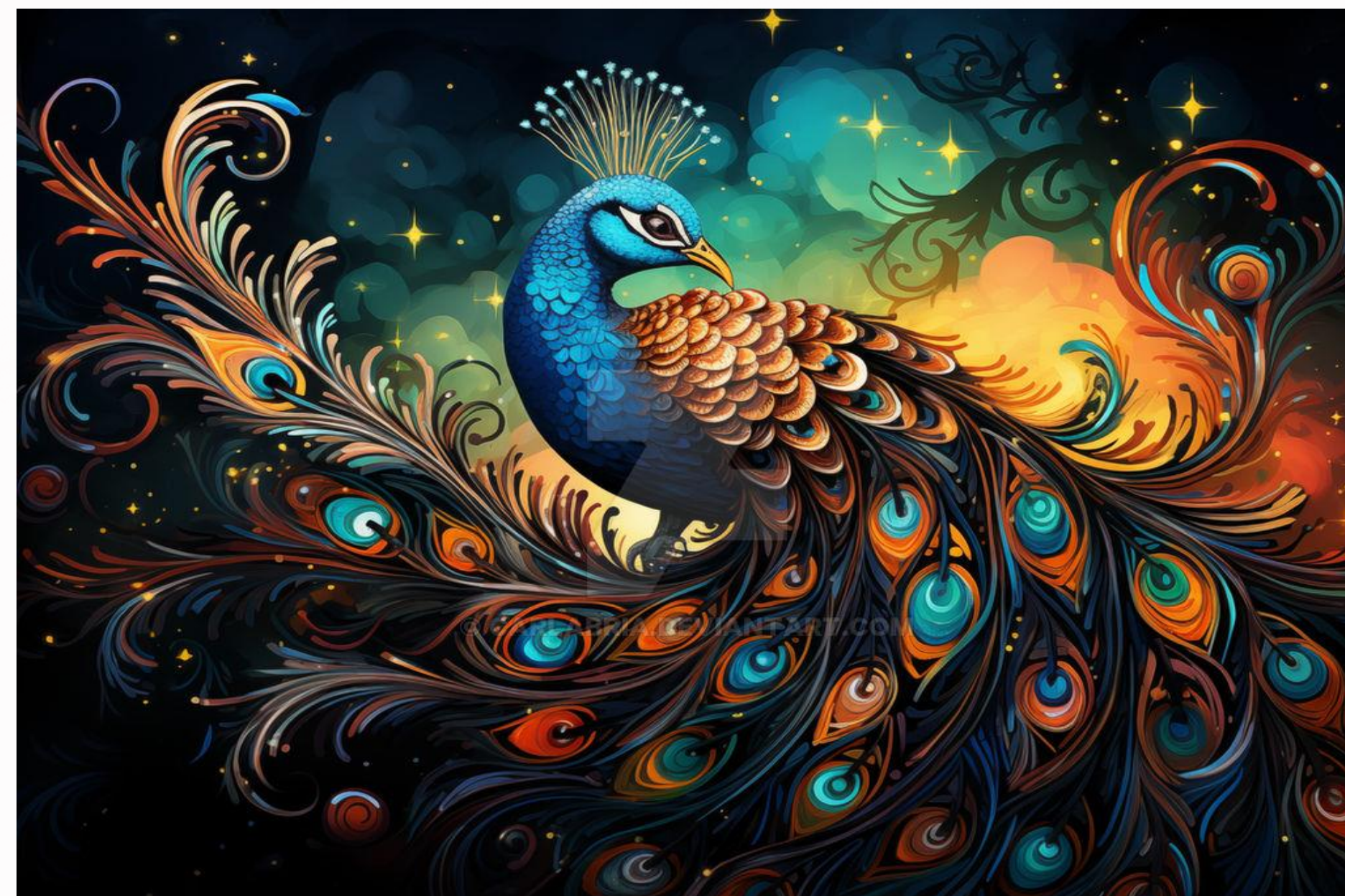
Promote Slow Fashion

❖ **Slow fashion emphasizes sustainability**, ethical production, and timeless design, making it the perfect framework for crafting a **bag that embodies the regal beauty of peacock feathers while minimizing environmental impact.**



Timeless Design and Quality

- ❖ A peacock-inspired bag (**Royal Plume Bag**) embodies elegance, craftsmanship, and durability, making it a perfect representation of timeless design and quality.
- ❖ Inspired by the regal beauty of peacock feathers, this project integrates luxurious materials, intricate detailing, and sustainable practices to create a product that transcends fleeting fashion trends.



**LEATHER.
STAY
DIFFERENT.
2025**

Stylish and Versatile Options



❖A peacock-inspired bag offers a unique blend of style and versatility, making it a standout accessory for various occasions.

❖The rich, iridescent hues of peacock feathers serve as an inspiration for elegant designs that can transition seamlessly from casual to formal settings.



Stylish and Versatile Options

- ❖ Whether crafted from sustainable materials or adorned with intricate embroidery, these bags embody both fashion-forward aesthetics and practical functionality.
- ❖ A structured tote with subtle peacock motifs can add sophistication to a professional ensemble, while a vibrant clutch with feather-like embellishments can be the perfect statement piece for an evening event.



The Future of Fashion:

- ❖ The future of fashion is increasingly being shaped by the principles of slow fashion, emphasizing sustainability, ethical production, and conscious consumerism.
- ❖ As the industry moves away from fast fashion's disposable culture, slow fashion is gaining momentum by promoting quality over quantity, encouraging timeless designs, and fostering responsible manufacturing practices. this project aim paving the way for a more responsible and fashionable future with timeless design.



REAL
LEATHER.
STAY
DIFFERENT.
2025

INSPIRATION



REAL
LEATHER.
STAY
DIFFERENT.

2025

The Peacock Essence: A Fusion of Art & Utility



REAL
LEATHER.
STAY
DIFFERENT.

2025



Natural Elements

- **Peacock feathers** are a stunning example of natural structural coloration, meaning their vibrant hues come not from pigments but from microscopic structures that reflect and refract light.
- This phenomenon creates the iridescent blues, greens, and golds that make peacock feathers so mesmerizing.

REAL
LEATHER.
STAY
DIFFERENT.

2025



Natural Elements

- The intricate patterns and shimmering colors of peacock feathers serve both aesthetic and evolutionary purposes.
- The feathers' unique structure consists of keratin platelets arranged in a way that scatters light, producing the dazzling effect.

**REAL
LEATHER.
STAY
DIFFERENT.**

2025

Art and Craftsmanship

- Peacock feathers have long been admired for their artistic beauty and craftsmanship, inspiring various forms of creative expression.
- Their iridescent colors and intricate patterns can convert into luxury choice for fashion, jewelry, home décor, and fine art.

REAL
LEATHER.
STAY
DIFFERENT.

2025



Symbolism and Storytelling

- Peacock feathers iridescent hues and intricate patterns make them powerful symbols of beauty, wisdom, immortality, and protection.
- peacock feathers have been used in storytelling and folklore to represent vision, confidence, and transformation. Their presence in dreams and omens is often interpreted as a sign of renewal, protection, and embracing one's uniqueness

REAL
LEATHER.
STAY
DIFFERENT.

2025

Color Palette

- Peacock feathers are known for their rich, iridescent color palette, featuring deep blues, vibrant greens, and shimmering golds.
- These colors are not created by pigments but by microscopic structures that reflect and refract light, producing their signature glow.

REAL
LEATHER.
STAY
DIFFERENT.

2025

Functional Design

- Peacock feathers are not just visually stunning; they also exhibit functional design principles that have inspired various fashion product design.
- Their structural coloration—created by microscopic arrangements rather than pigments—allows them to produce iridescent hues that change depending on the angle of light. This natural optical effect has influenced designs in Leather, coatings, and even biomimetic technology.

**REAL
LEATHER.
STAY
DIFFERENT.**

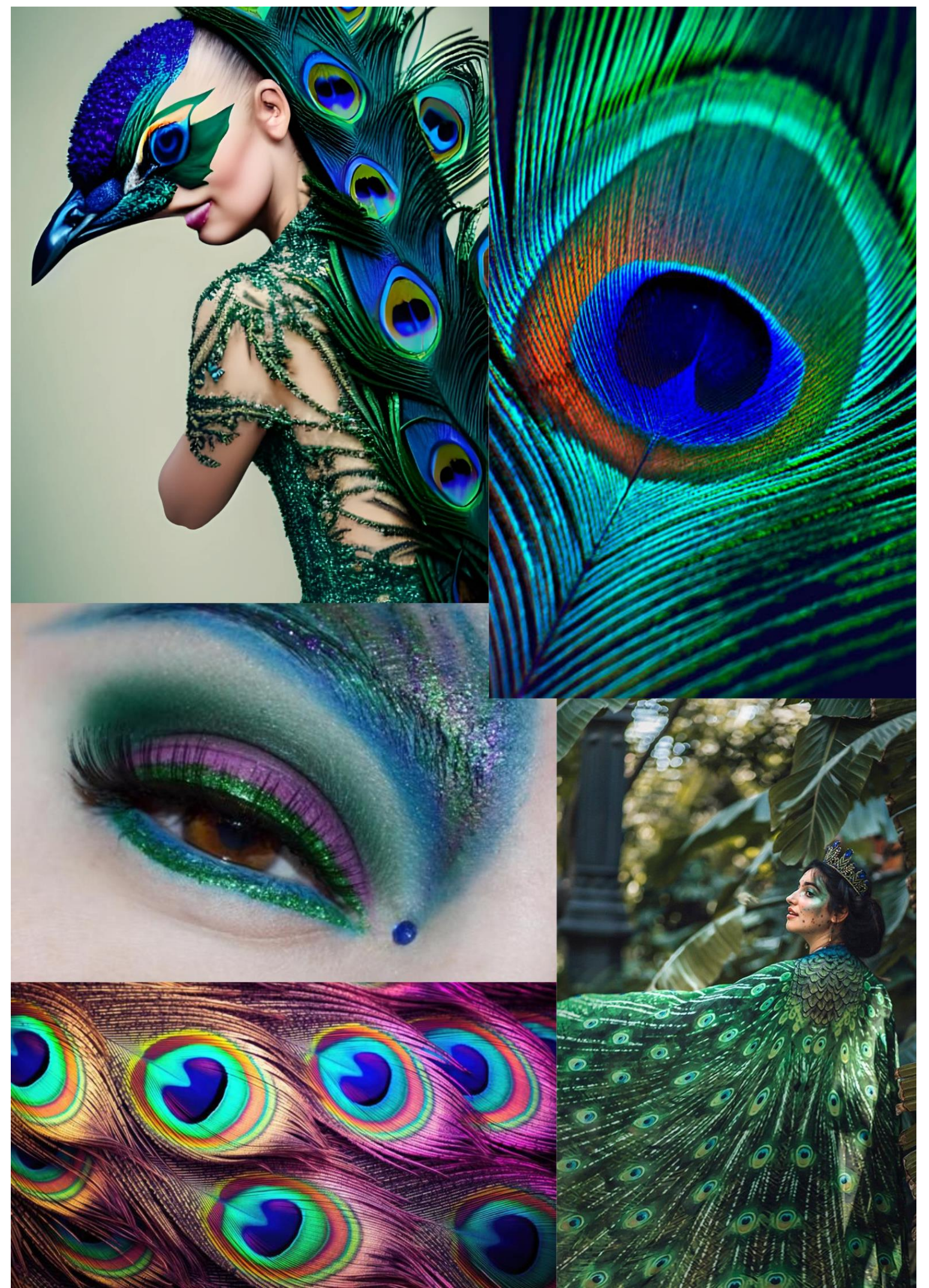
2025

FASHION BOARD

**REAL
LEATHER.
STAY
DIFFERENT.
2025**

Inspiration Board

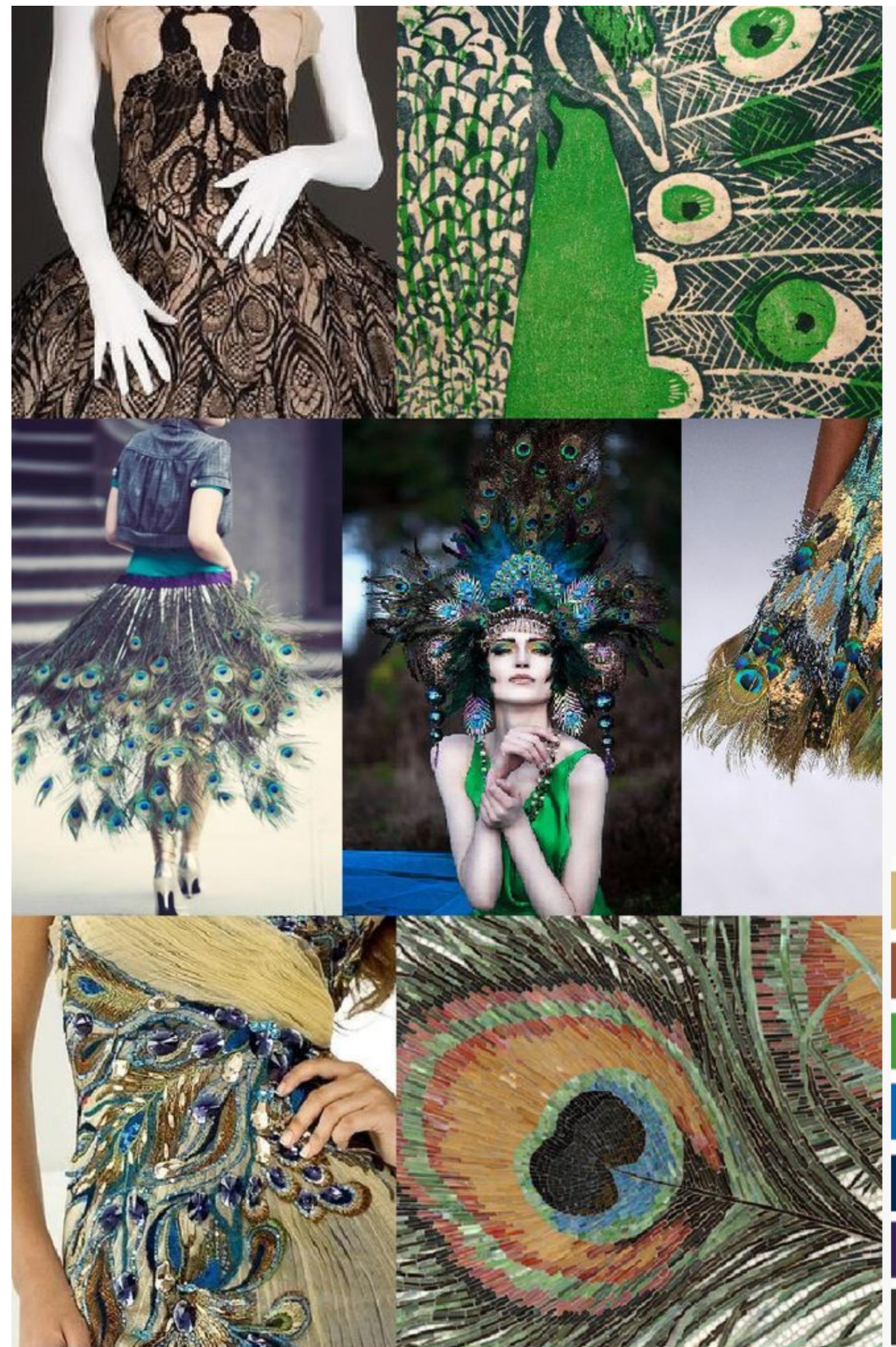
- Elegance Structure
- Iridescent hues
- Symbols of beauty
- Wisdom
- Immortality
- Mesmerizing



**REAL
LEATHER.
STAY
DIFFERENT.
2025**

Theme Board

- Self-expression
- Confidence
- Sensation
- Emotional depth
- Pride
- Renewal



THEME BOARD

**REAL
LEATHER.
STAY
DIFFERENT.**

2025

Mood Board

- Protection
- Openness
- Authenticity
- Intuition
- Emotional clarity



MOOD BOARD

**REAL
LEATHER.
STAY
DIFFERENT.
2025**

Color Board

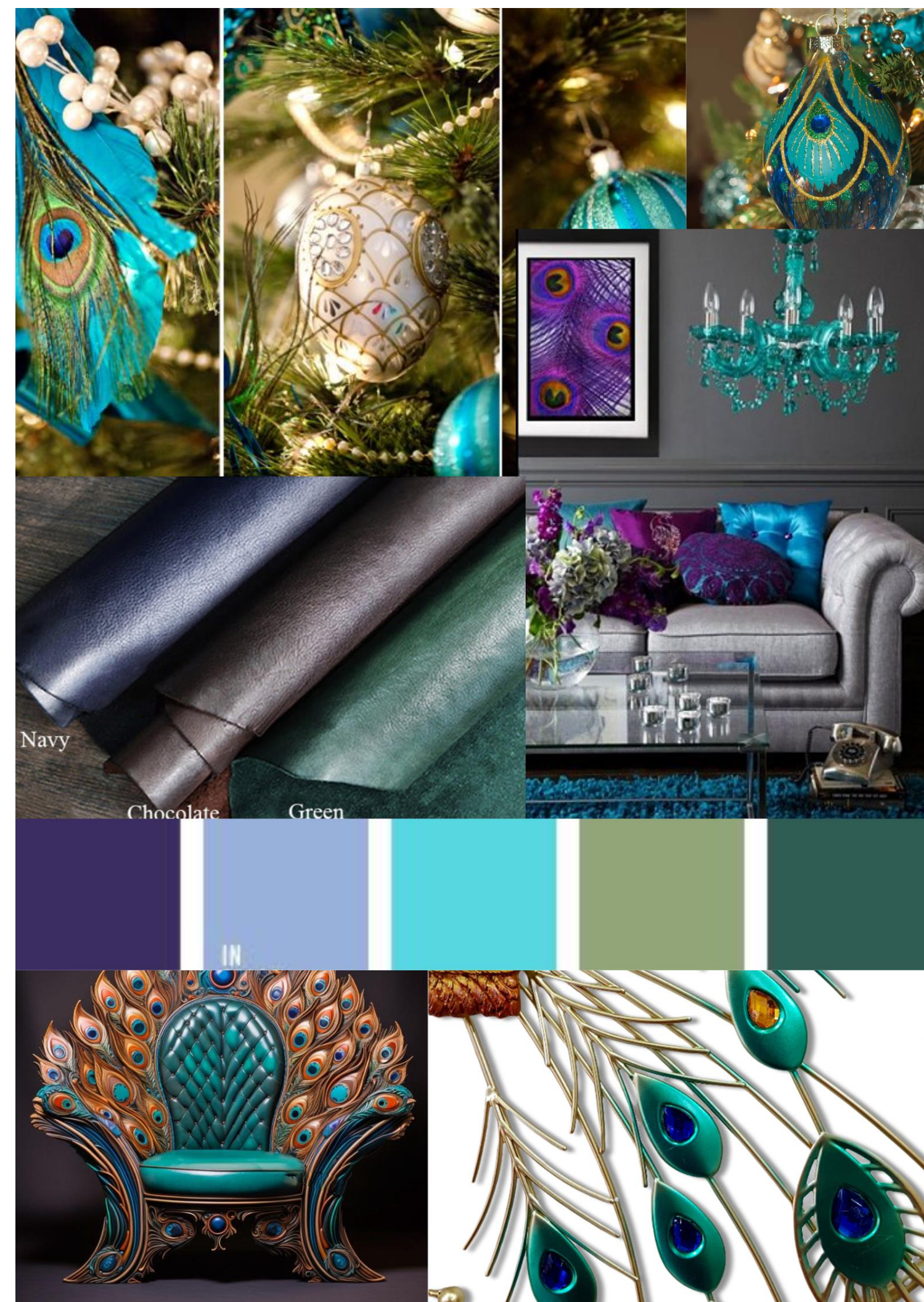
- Blue = Peace, Wisdom, and Truth
- Green= Growth, Abundance, and Renewal
- White= Kindness, Wisdom, and Rebirth



**REAL
LEATHER.
STAY
DIFFERENT.
2025**

Material Board

- Leather
- Beads
- Dying
- Accessories
- Fabric
- Crafted wood
- Texture



**REAL
LEATHER.
STAY
DIFFERENT.
2025**

Client Board

- Elegance
- Uniqueness
- Artistic craftsmanship
- Bold statement
- Luxury
- Sophistication
- Connection to Nature



Name: Tiffany Haddish
Location: South Los Angeles
Job: Actress
Personality: Fun
Age Range: 25-45

A photograph of a modern office interior, overlaid with a semi-transparent green filter. The office features wooden desks, ergonomic chairs, and numerous potted plants, including a large central planter box. Large windows in the background let in natural light. The text "Blending Nature with Style" and "Collocation Development" is centered in white serif font.

Blending Nature with Style

Collocation Development

**REAL
LEATHER.
STAY
DIFFERENT.
2025**

Design One



Material

1. Cow leather(Pull up leather)
2. Wire
3. Zipper
4. D-Ring
5. Woven Fabric for bag lining

REAL
LEATHER.
STAY
DIFFERENT.
2025

Design Two



Material

1. Cow leather(Pull up leather)
2. Beads
3. Zipper
4. Golden D-Ring
5. Woven Fabric for bag lining

REAL
LEATHER.
STAY
DIFFERENT.
2025

Design Three



Material

1. Cow leather(Pull up leather)
2. Wire
3. Zipper
4. D-Ring
5. Woven Fabric for bag lining

**REAL
LEATHER.
STAY
DIFFERENT.
2025**

Design Four



Material

1. Cow leather(Pull up leather)
2. Wire
3. Zipper
4. D-Ring
5. Woven Fabric for bag lining

REAL
LEATHER.
STAY
DIFFERENT.
2025

Design Five



Material

1. Cow leather(Pull up leather)
2. Wire
3. Zipper
4. D-Ring
5. Woven Fabric for bag lining

**REAL
LEATHER.
STAY
DIFFERENT.
2025**

Design Six



Material

1. Cow leather(Pull up leather)
2. Wire
3. Zipper
4. D-Ring
5. Woven Fabric for bag lining



**REAL
LEATHER.
STAY
DIFFERENT.
2025**

Design Seven



Material

1. Cow leather(Pull up leather)
2. Wire
3. Zipper
4. D-Ring
5. Woven Fabric for bag lining

THANK YOU

Biniyam Solomon

 +251-921243999

 biniko139@gmail.com

**Leather Product Designer and Researcher
@ Bahir Dar University**

