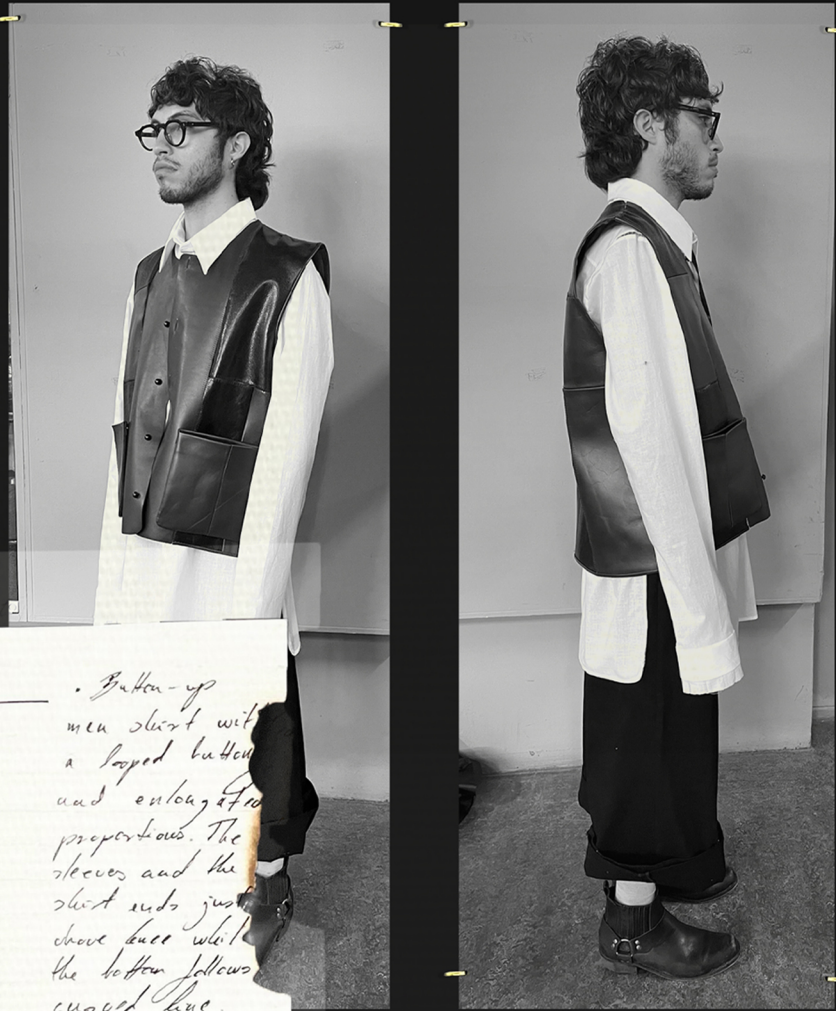


CHRONOMETRY [TIME UNHALTED]





~ Button-up Shirt:

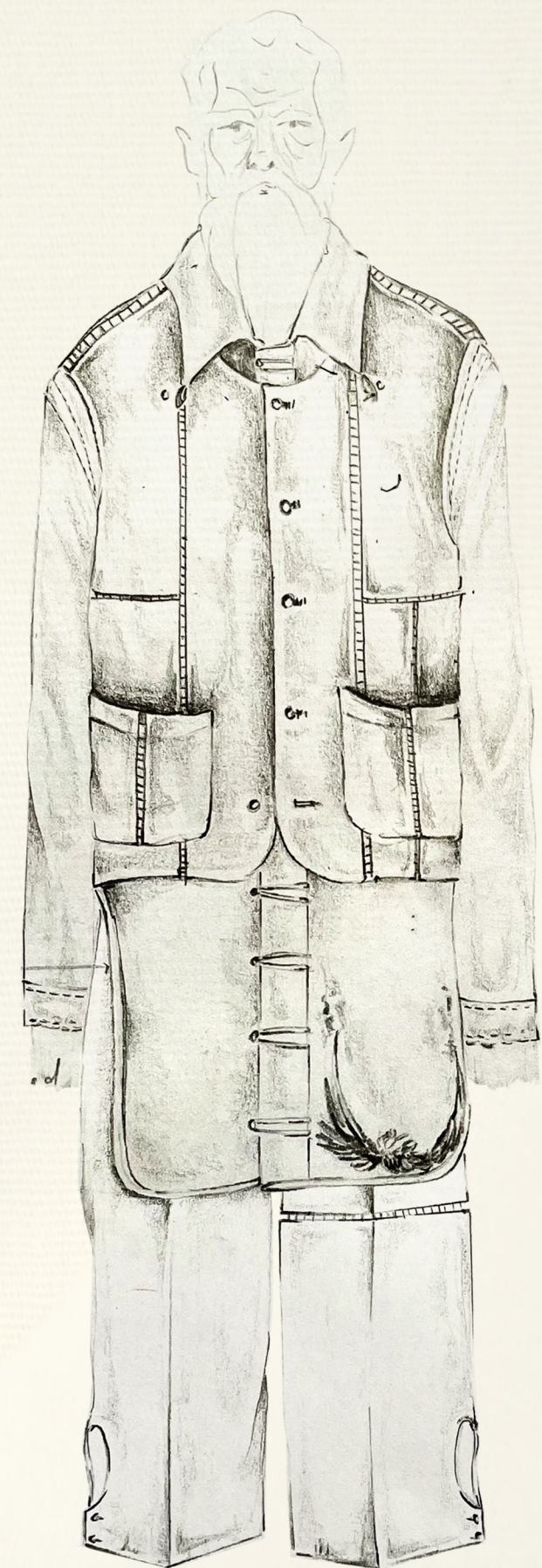
. Button-up men shirt with a lapel button and enlarged proportions. The sleeves and the shirt ends just above knee while the bottom follows curved line.

~ Leather Vest:

. A workwear leather vest made of 22 panels that is held together by joining them with blanket stitches, after which they're stitched to each other by tightened handstitches. The edges are finished by leather pipe or burned edges. The opening has cut buttonholes that are embraced by golden repair stitches. It has two patchwork pockets that are both detachable by sewing.



Look 1





CHRONOMETRY [ TIME UNHALTED ]

ILLUSTRATION





CHRONOMETRY [ TIME UNHALTED ]





LEATHER PATCHWORK VEST, CONSISTING OF 22 PANELS WHICH ARE FIRST HAND FRAMED BY BLANKET STITCHES AND AFTERWARDS CAREFULLY HANDSEWN TOGETHER WITH LENGTHENED STITCHING TO CREATE AN OPENED STRUCTURE AT THE CONNECTION LINES TO CONTRAST THE HEAVINESS OF THE LEATHER BY THE OPENED SPACE AND THE INTRICACY OF THE HAND-WORK. THE GARMENT IS ENRICHED WITH GOLDEN STITCHES THAT NARROW DOWN THE BUTTONHOLES. THE PIECE'S A CELEBRATION OF CRAFT, SYMBOLIZING PATIENCE AND HUMILITY.







BUTTONED OPENING WITH BURNED  
EDGE BUTTON HOLES THAT HAVE  
BEEN 'REPAIRED' BY GOLDEN REPAIR  
STITCHES

HAND-STITCHED DETAILING TO  
CONNECT PANELS

DETACHABLE POCKETS WITH A  
HAND-STITCHED DETAILING AT THE  
CF, AND 4 METAL PUSH BUTTONS AT  
THE BACK SIDE FOR ATTACHMENT.



LEATHER PIPING, USING THE SAME LEATHER THAT  
HAS BEEN USED FOR THE BODY OF THE GARMENT.  
ONE SIDE OF THE PIPING IS SEWN TO THE BODICE,  
AND THE OTHER SIDE IS FINISHED BY BLANKET  
STITCHES MADE BY HAND









THANK YOU FOR YOUR PRECIOUS TIME

---

TEL: +36303680901

EMAIL: SZABODORKA11@GMAIL.COM

INSTAGRAM: SZABODORKA11