



Duality Of Skin

BY Arielle Silberstein

Art;Design;Reality

Anish Kapoor is a famous British-Indian Jewish artist born in Mumbai in 1954. He is considered one of the most important and influential artists of our time. He is best known for his giant sculptures, which combine geometric shapes and modern materials.

One of his most famous works is "Cloud Gate" in Chicago; a giant polished stainless steel sculpture in the shape of a bean, which reflects the city's skyline.

Kapoor specializes in using materials such as polished stainless steel, brightly colored pigments, and the use of "Venetta Black" - the blackest material in existence.

His works incorporate elements of optical illusion, reflection, and the blurring of boundaries between the object and the environment.

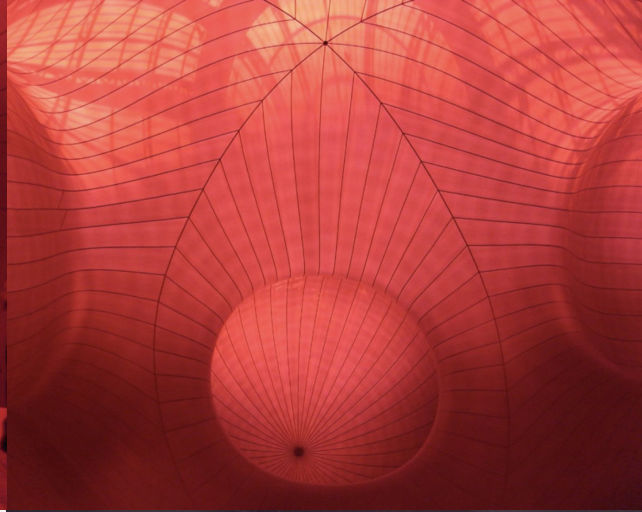
He has won numerous awards, including the prestigious Turner Prize in 1991.

Kapoor is also famous for having acquired the exclusive rights to use "Venetta Black" in the field of art, which sparked controversy in the global art community.

His works are exhibited in museums and public spaces around the world, and they attract much attention due to their large dimensions and the impressive visual effects they create.



moodboard;



"Leviathan".

"Leviathan" was a huge installation that was presented in 2011 at the Grand Palais in Paris, as part of the MONUMENTA exhibition series. It was one of Kapoor's most ambitious works.

The work was a huge inflatable structure in dark burgundy red, which stretched for about 35 meters in length and about 35 meters in height. Visitors could enter the structure, where they found themselves in a dark and mysterious space. The experience was described as a kind of entering a living body, or like being in the belly of a whale - hence the name of the work.

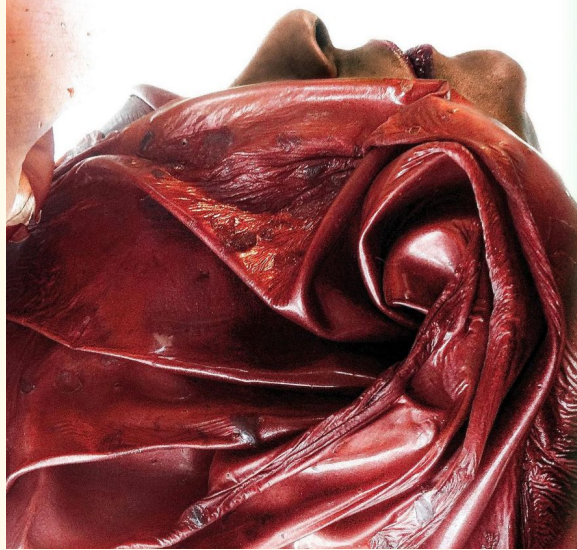
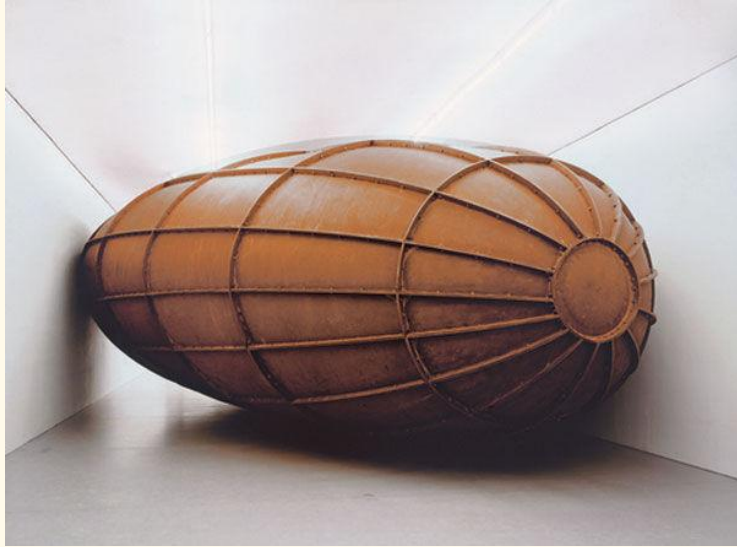
What made the work particularly special was the way it played with the visitors' perception of space and the way it corresponded with the magnificent structure of the Grand Palais itself. The work created a fascinating dialogue between the classical architecture of the building and the organic and modern forms of the "leviathan".

This is an example of how Kapoor combines monumental art with an intimate and personal experience for the viewer.

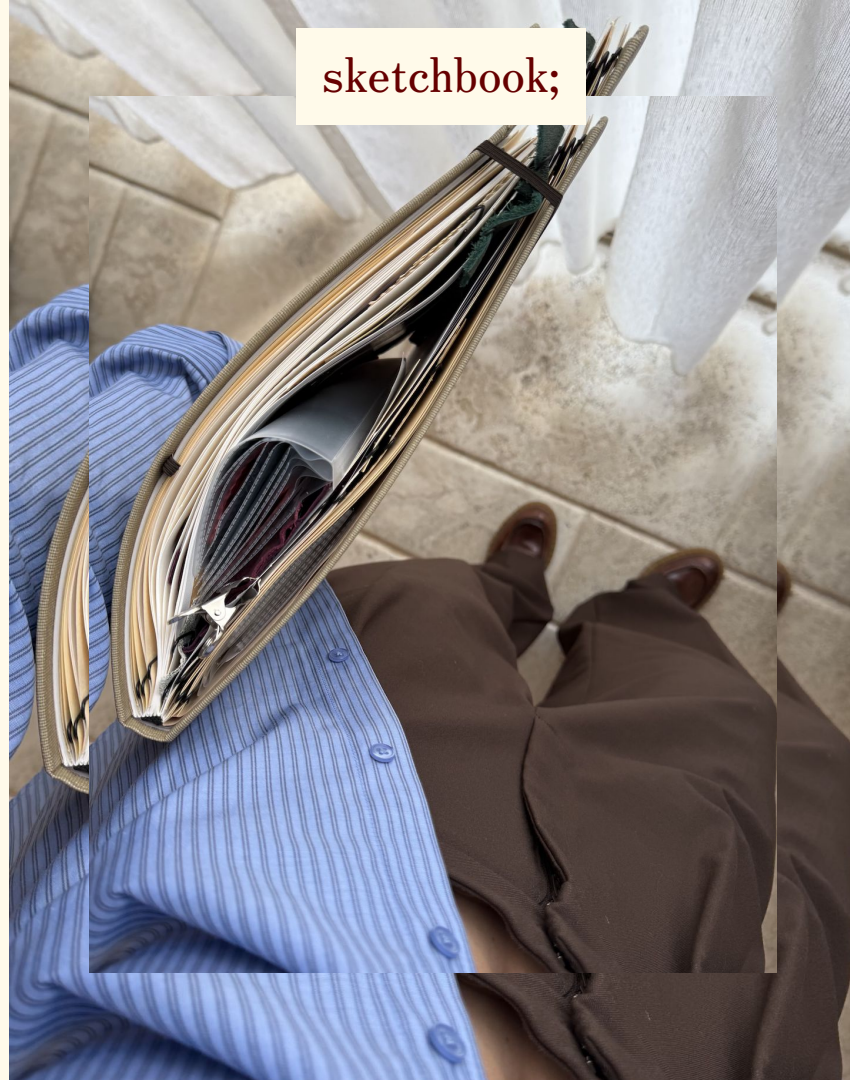
Anish Kapoor's work "Levitan" deeply resonates with the experience of Israeli society following the events of 7th of October.

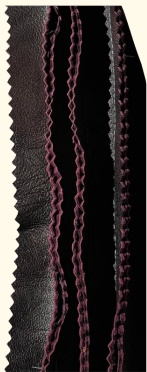
Like the vast, dark space that Kapoor created in the Grand Palais, which appears from the outside as a monumental and threatening structure but invites the viewer to an intimate and vulnerable experience inside, Israeli society also experiences a constant tension between the need to demonstrate external resilience and internal vulnerability and trauma.



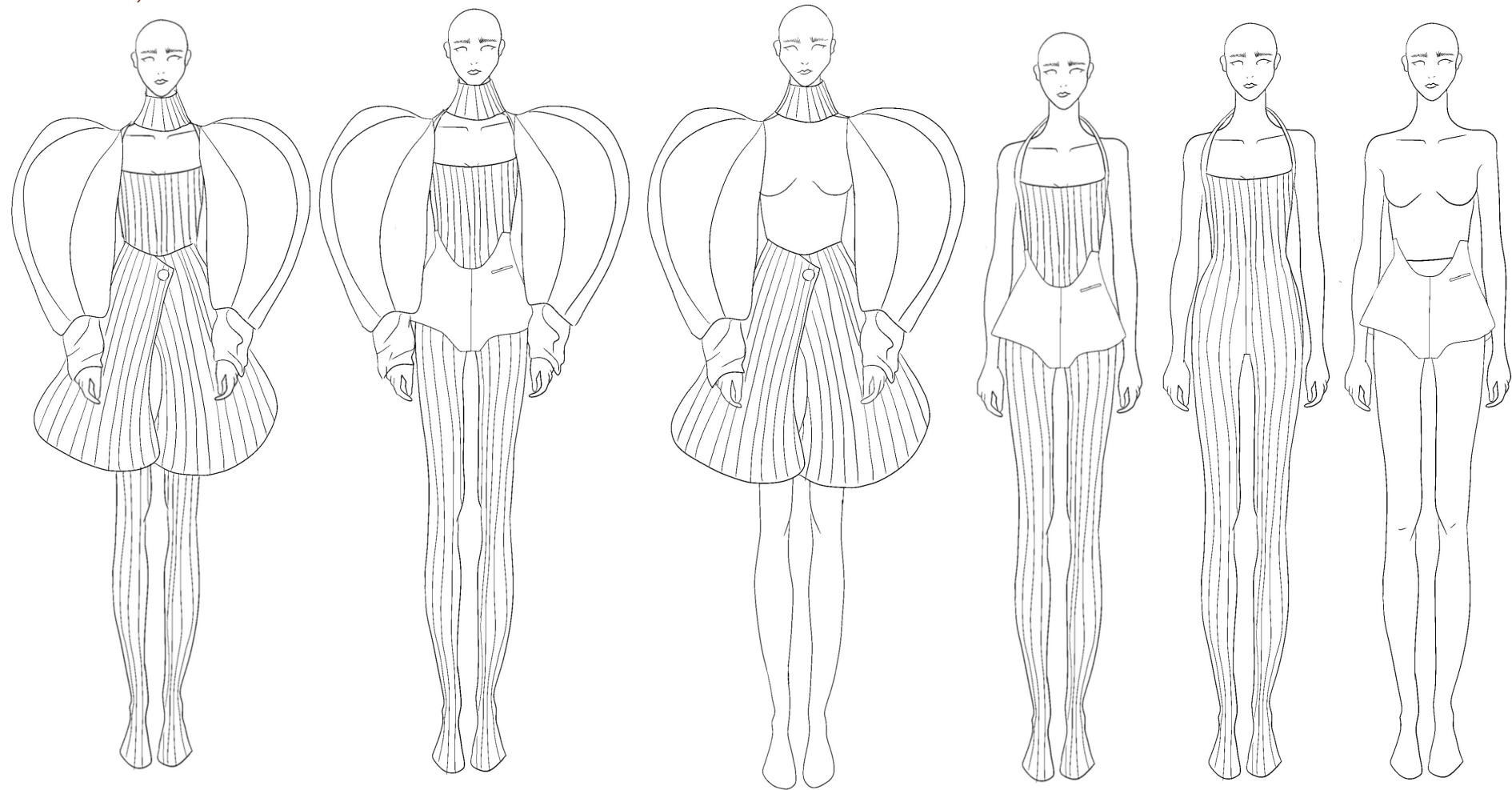


sketchbook;



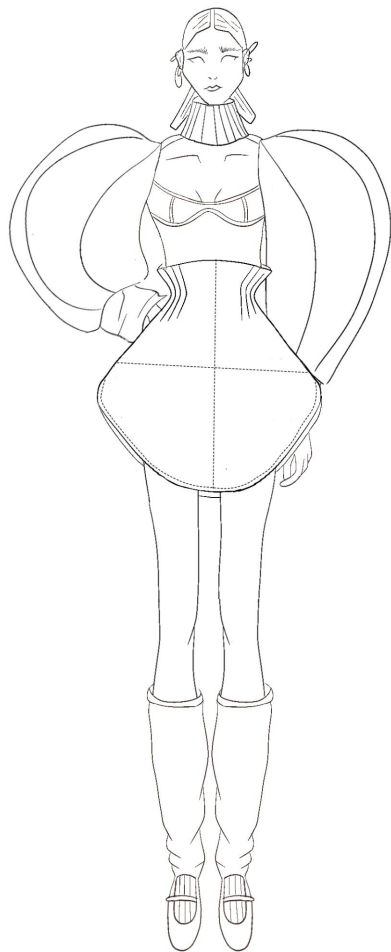
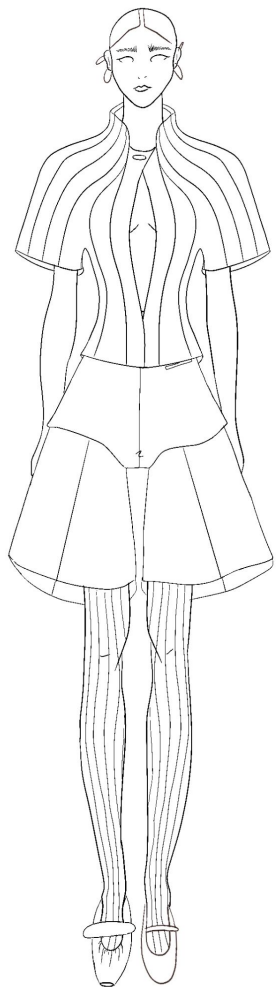


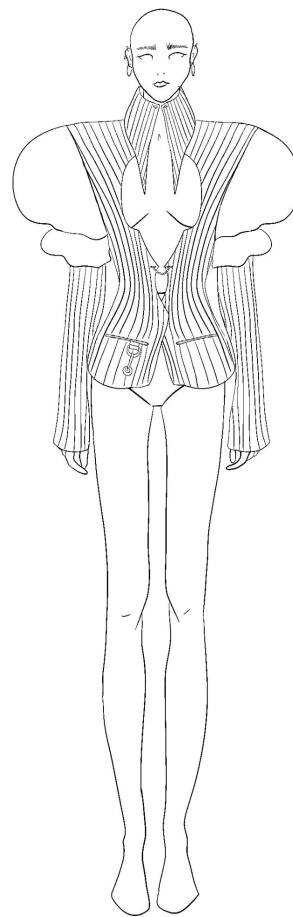
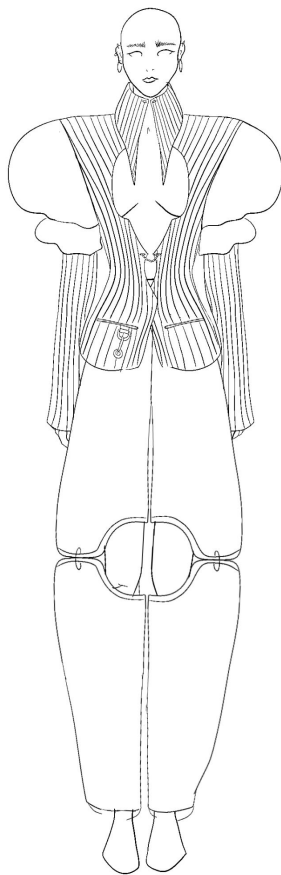
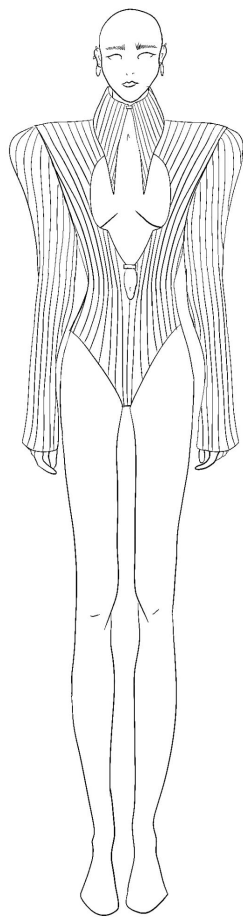
sketches;



Duality Of Skin

Arielle Silberstein





the process;







01



02



03



04



05



06



—> > cow leather

the details;



—> > Hand leather stitching

the pants;





01



02



03

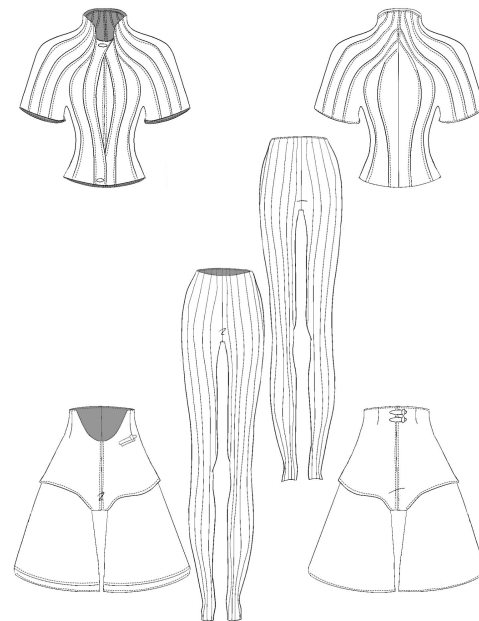
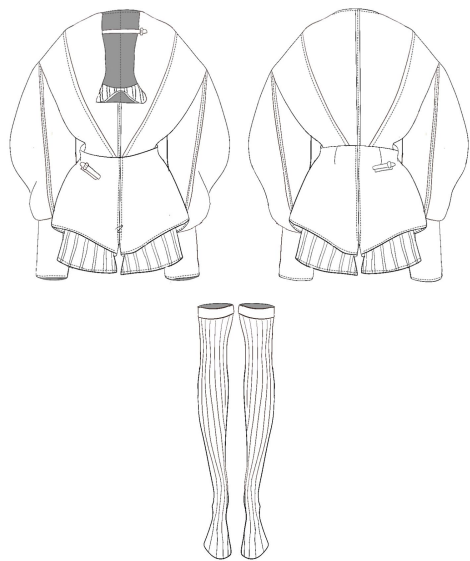
—> > sheep leather

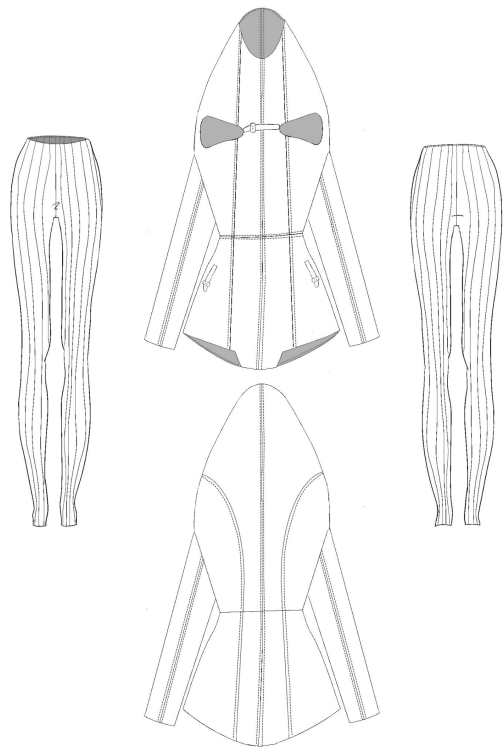
the fitting;
no.1

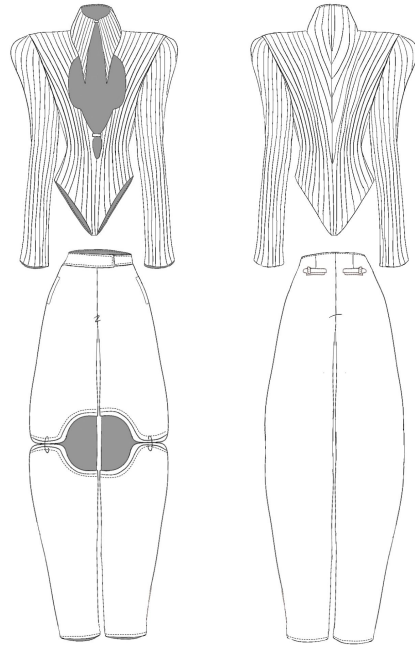
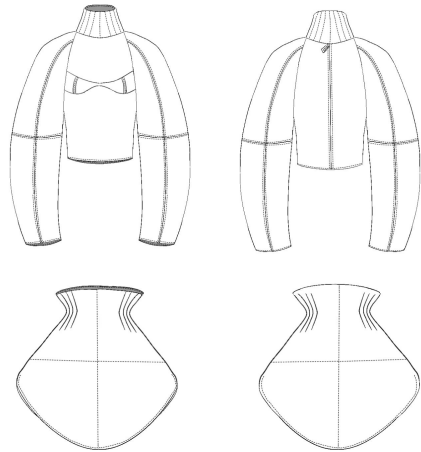


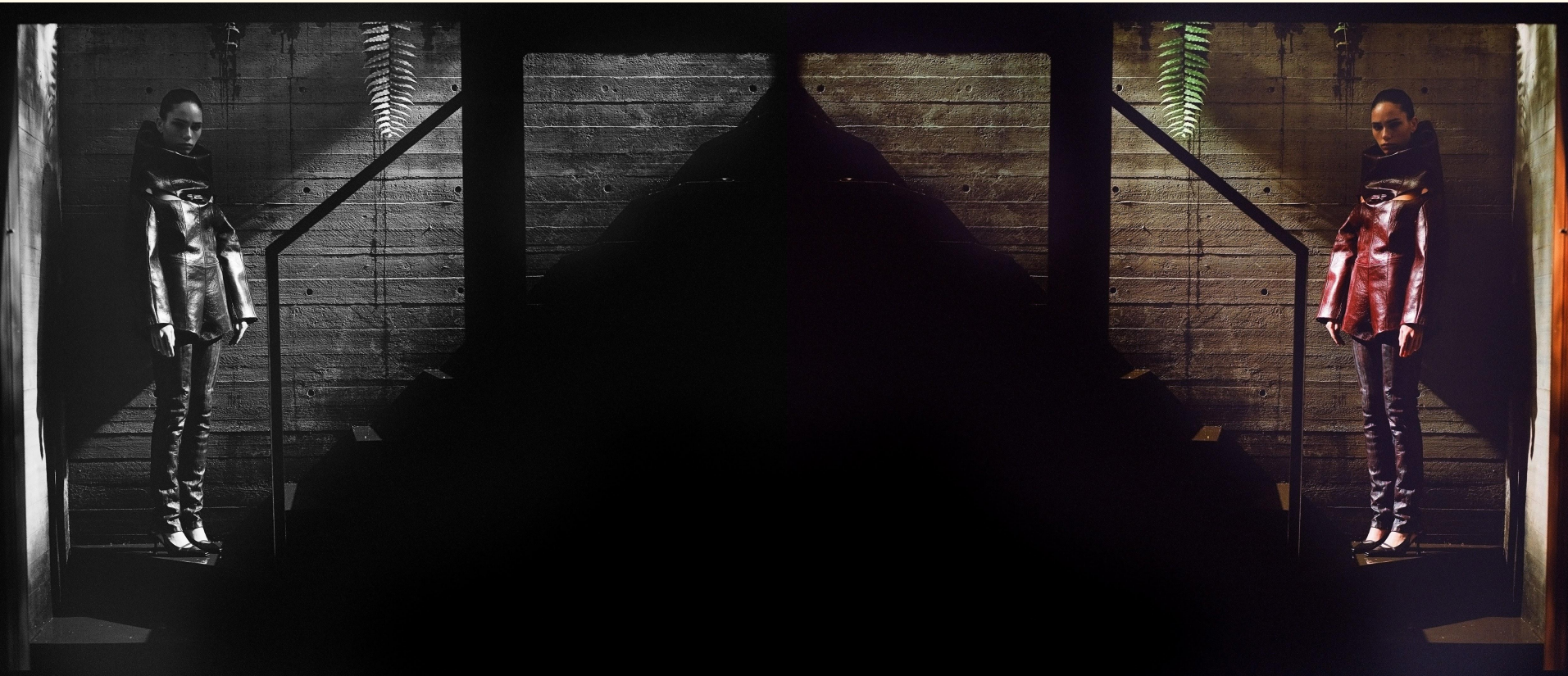
duality of skin COLLECTION;













Duality Of Skin



Arielle Silberstein



Duality Of Skin



Arielle Silberstein



Duality Of Skin

Arielle Silberstein



Thank You.