



# ARANI

LUXURY LEATHER GOODS

REAL LEATHER STAY DIFFERENT

Africa Talent Leather Design Showcase

2025

In an era, full of automation and mass production, Arani Luxury leather goods pride itself in bespoke, 100% handmade leathersgoods; from cutting and stitching, to beveling and edge finishing. Not only do we pay homage to the ancient saddle stitching technique from the 18 th century but also incorporate modern tech into our leather goods, therefore; creating products that are rooted in tradition but reimagined for the future.

Artistry, utility and innovation are at the heart of Arani. This piece is more than an accessory; it is a statement of legacy and intention. In a nutshell craftsmanship with a classic soul but a modern mind. At its core, lies a rich full-grain cowhide leather body, with a full sheepskin lining interior surgically saddle stitched. The bag is then meticulously hand painted to evoke awe, wonder and flaunt the beauty of Africa.

It highlights the rich golden sunset and rhythmic life of the Swahili coast that feels like a return to something ancient and pure; Each stroke is a narrative. The hardware is hand forged by master artisans in brass recycled from padlocks. Inside this timeless masterpiece lies the future:

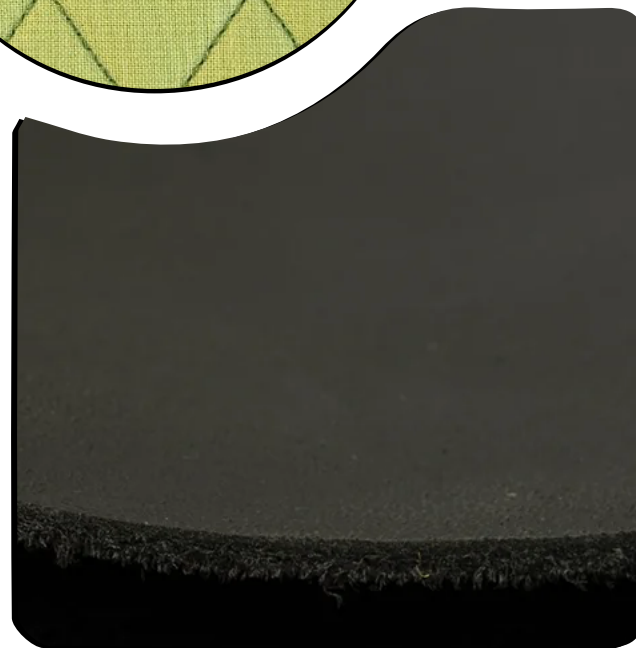
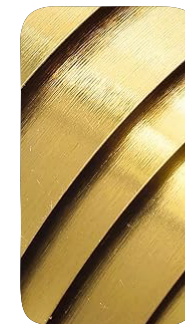
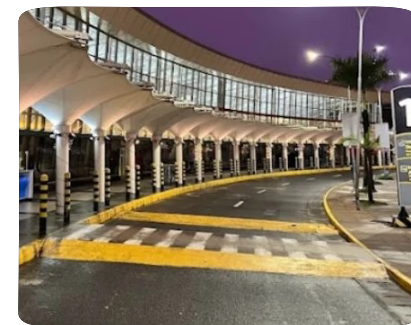
an integrated air tag tracker for smart security and a built-in power bank keeping the modern user effortlessly connected without sacrificing elegance. These elements are carefully embedded maintaining a minimal design while enhancing functionality.

The Arani Ya-Mwisho luxury duffle bag is a celebration of slow luxury, master hand craftsmanship, interdisciplinary art and a new era in African-made luxury leather goods. This is a product where everything is intentional, from the artisans' hands to the savvy end user. Crafted not produced.

We strive to see the impact of beauty on human emotions through this masterpiece, a journey through craft, technology and the rich African culture.

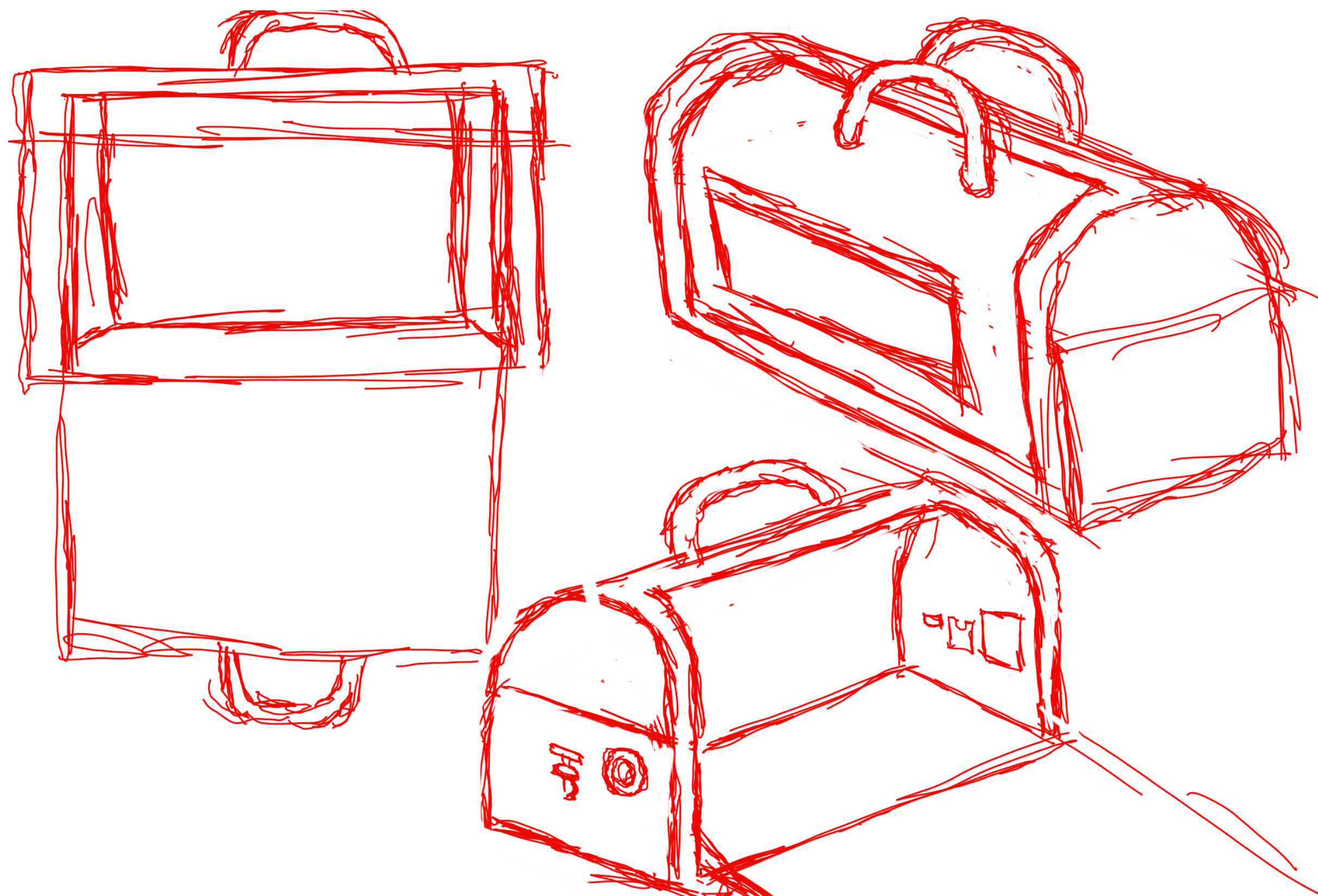
**REAL  
LEATHER.  
STAY  
DIFFERENT.**



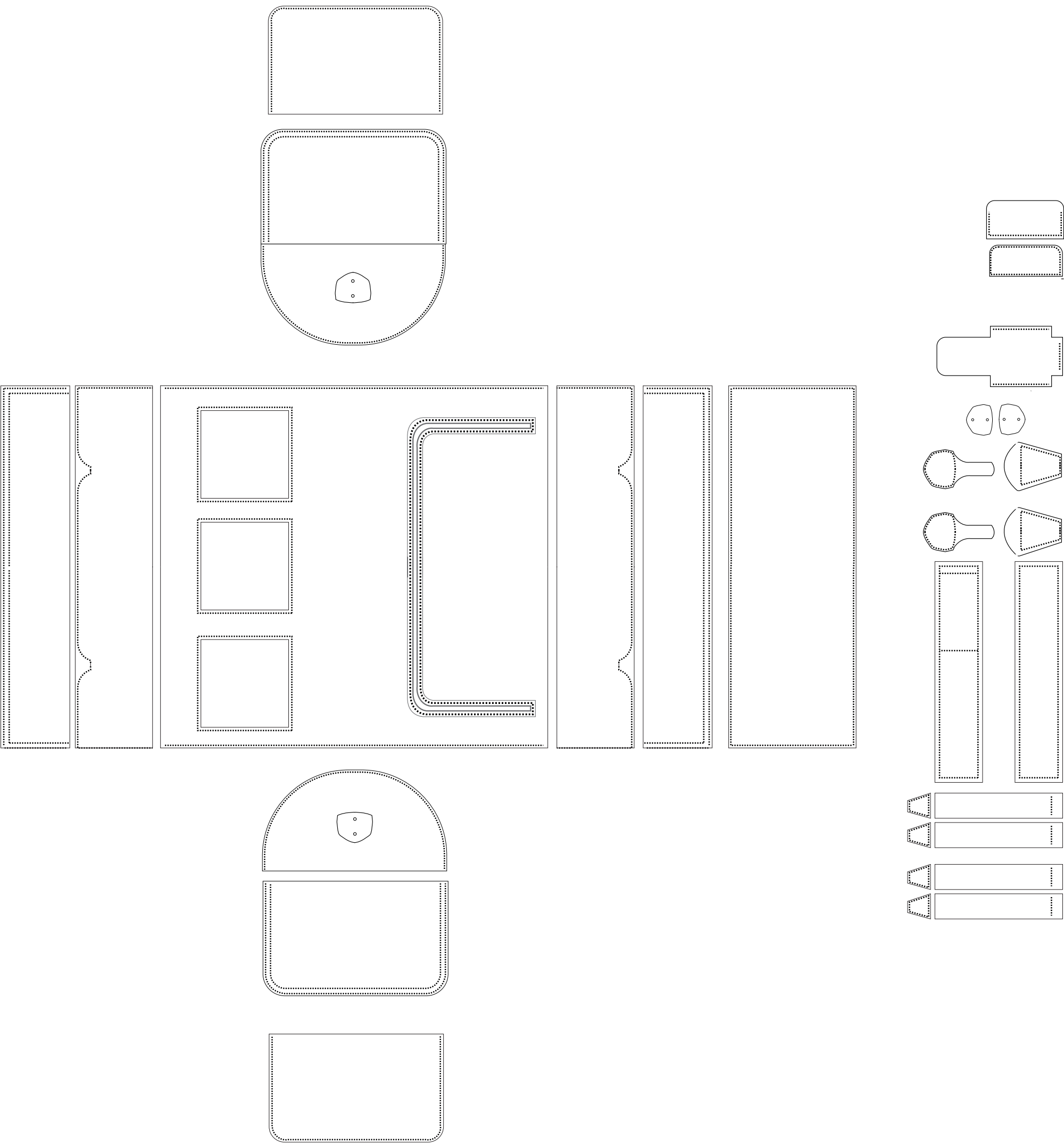


REAL  
LEATHER.  
STAY  
DIFFERENT.





REAL  
LEATHER.  
STAY  
DIFFERENT.



REAL  
LEATHER.  
STAY  
DIFFERENT.



Fig.1

-Brass Feet

-Red Stitching

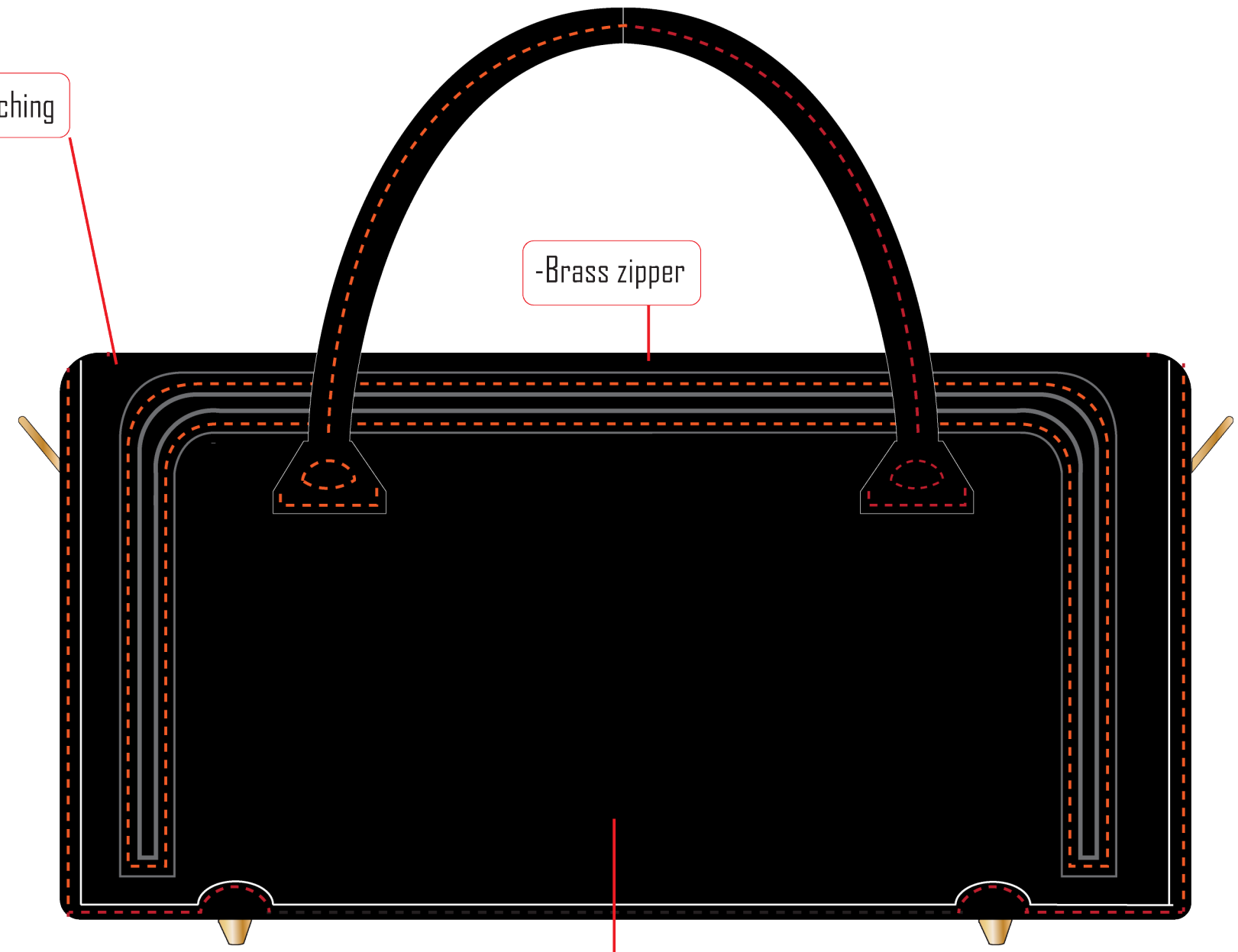


Fig.2

-Brass zipper

Oil pull up leather

Side View

Front View

REAL  
LEATHER.  
STAY  
DIFFERENT.





Fig .3

open sections to be hand painted on

Rear View

**REAL  
LEATHER.  
STAY  
DIFFERENT.**

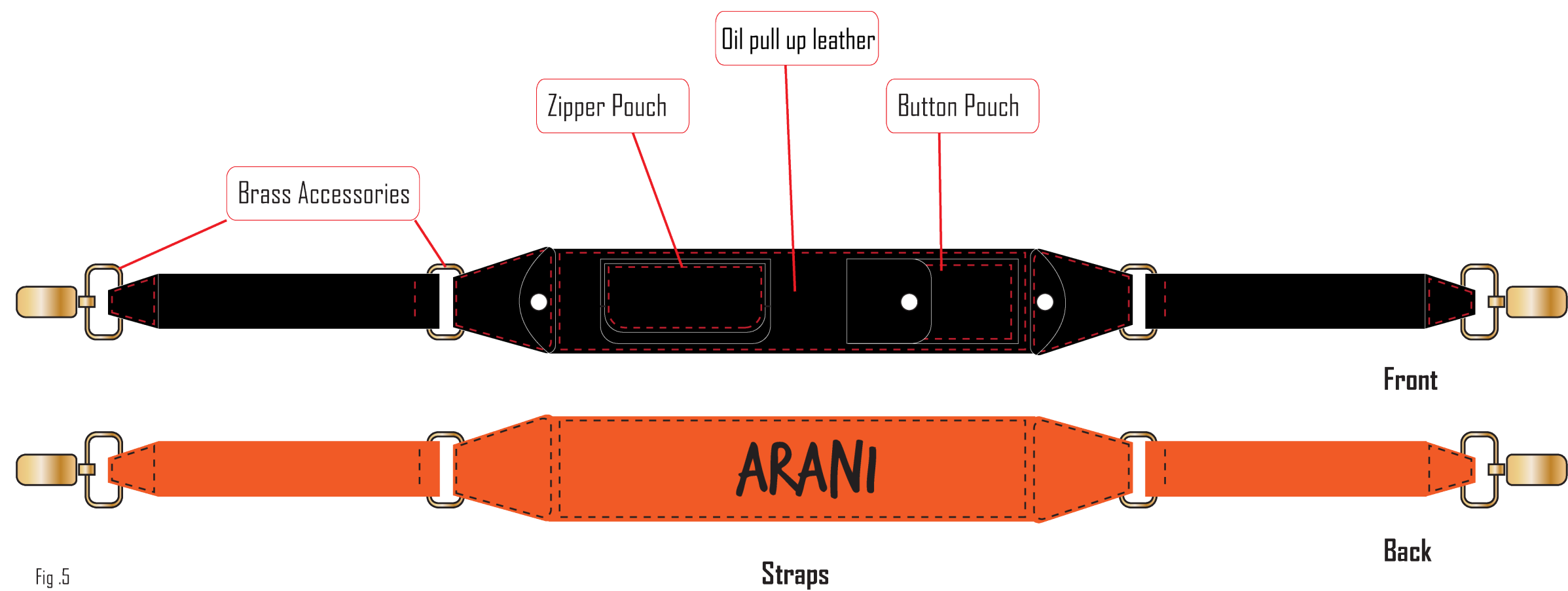


Fig .5

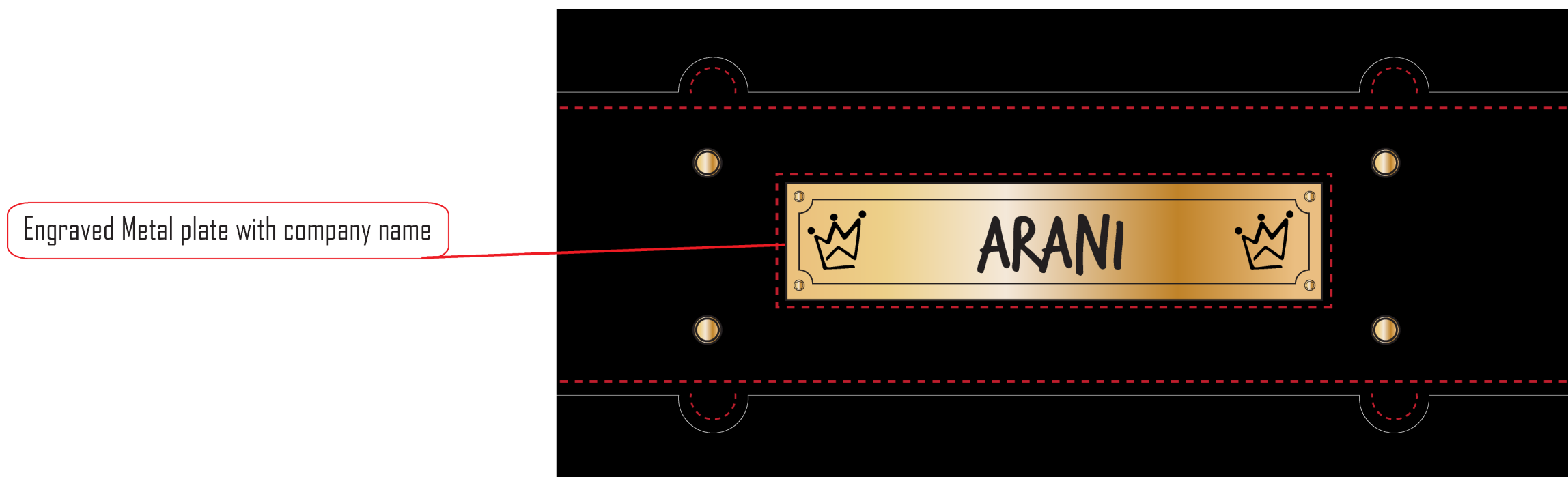
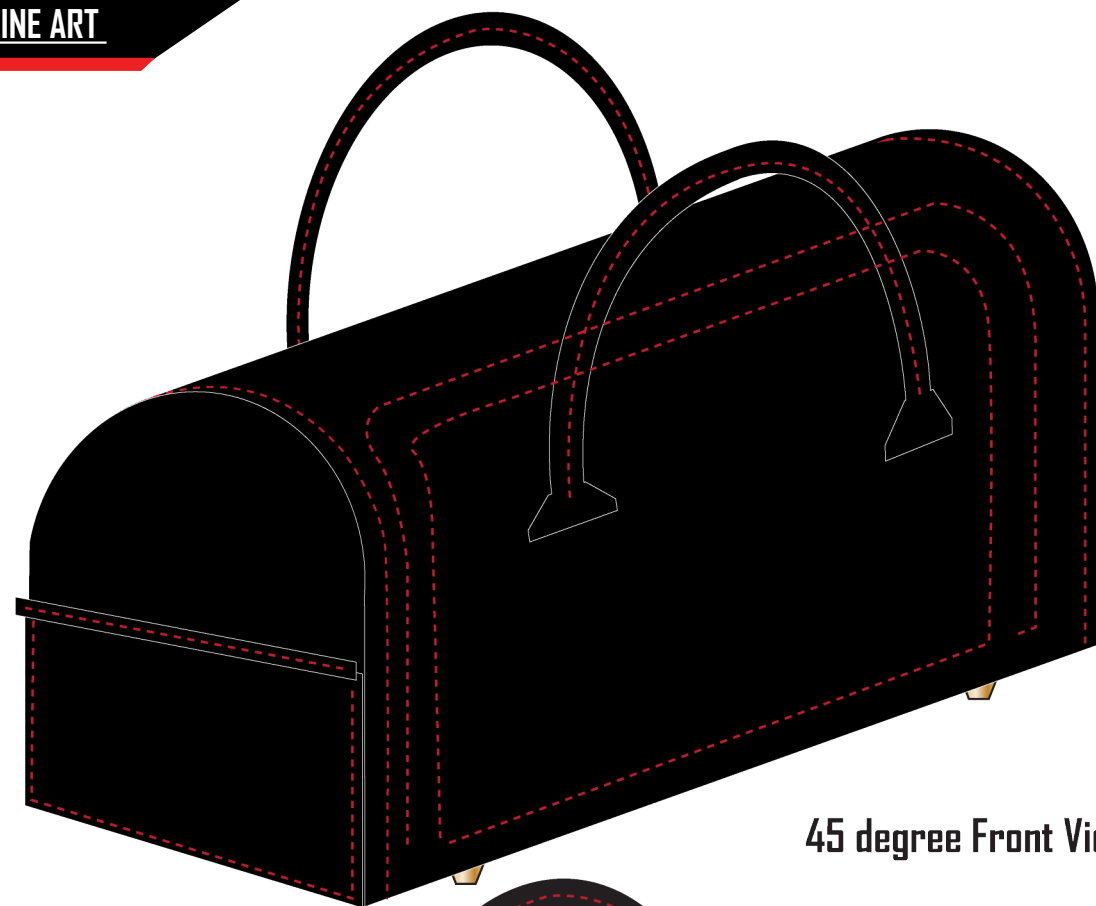


Fig .6

Bottom View



45 degree Front View



45 degree Back View

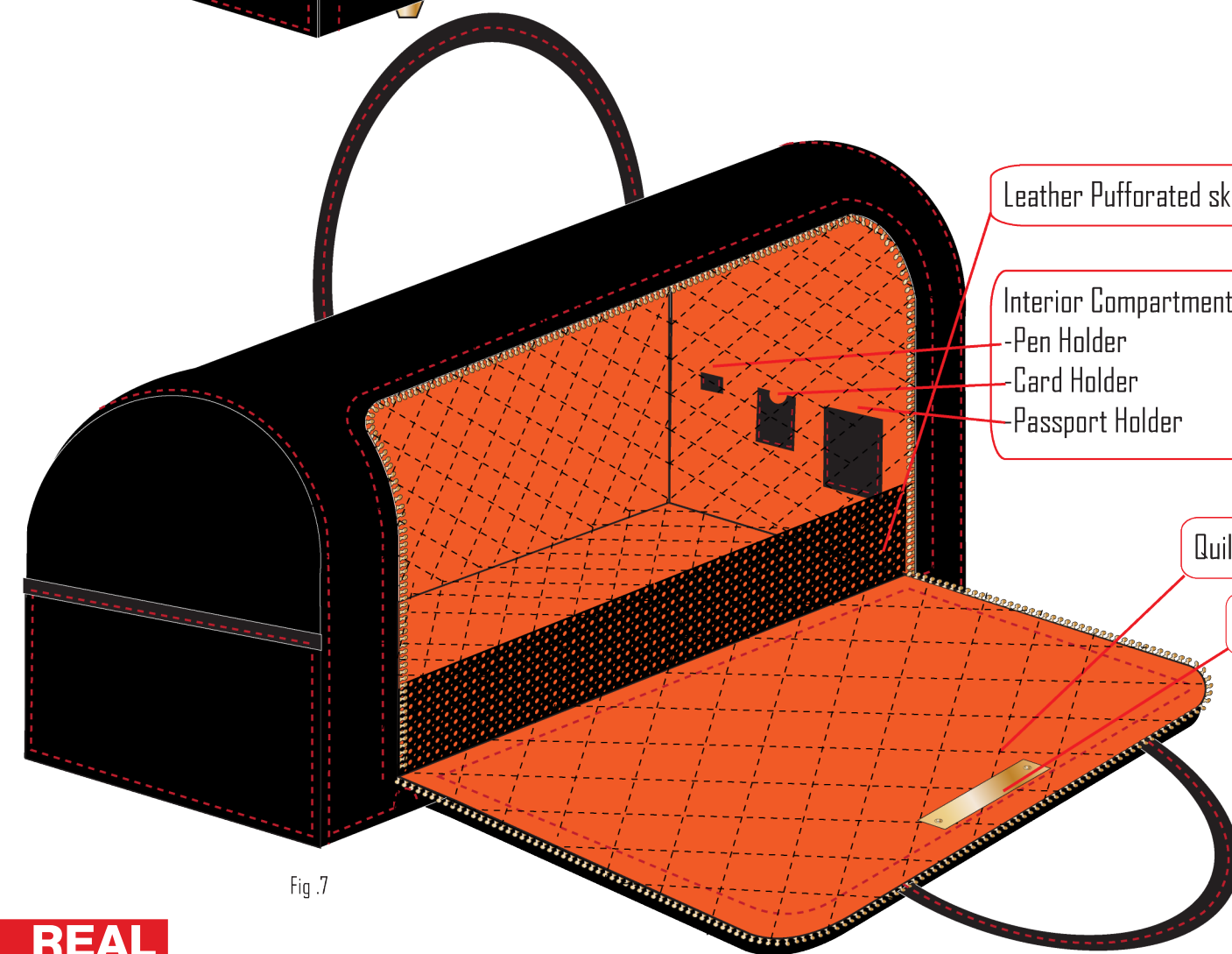
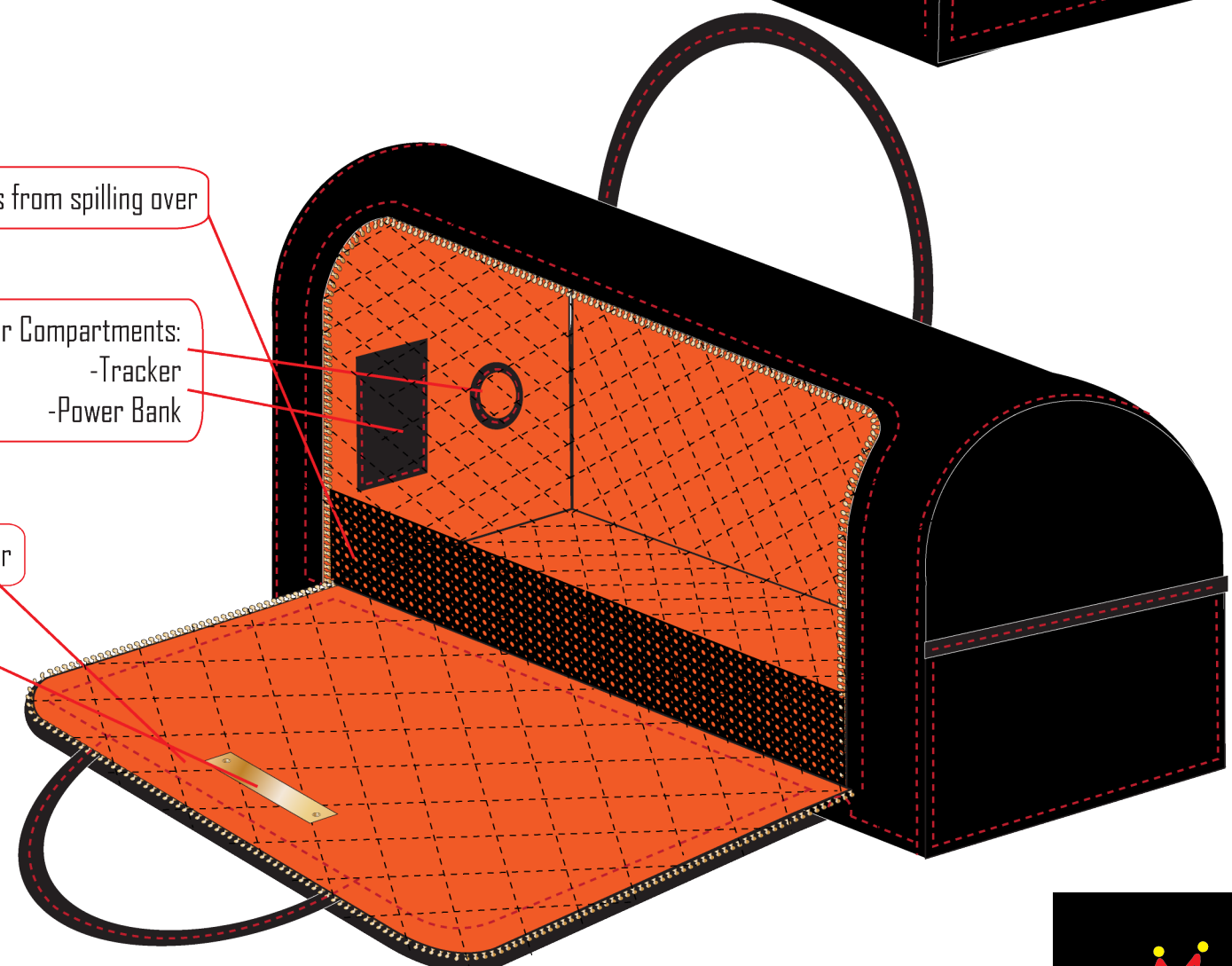


Fig. 7

Internal View



45 Degrees (Right)

45 Degrees (left)

Leather Pufforated skin used for securing items from spilling over

Interior Compartments:  
-Pen Holder  
-Card Holder  
-Passport Holder

Interior Compartments:  
-Tracker  
-Power Bank

Quilted Black stitched interior

Metal Engraved Plate

**REAL  
LEATHER.  
STAY  
DIFFERENT.**





Fig .8

**REAL  
LEATHER.  
STAY  
DIFFERENT.**