



BOHO LUXE LEATHER BAG

DESIGNER SANA MAHMOOD

Category :Accessories(Bag)

FOOTWEAR DESIGN AND DEVELOPMENT
INSTITUTE

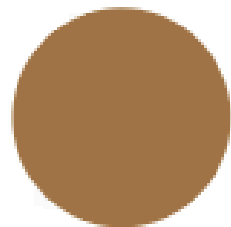
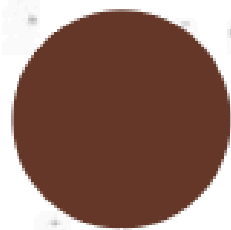
sanakth09@gmail.com

Bo

1. A person who acts free of re
2. One who
3. A free

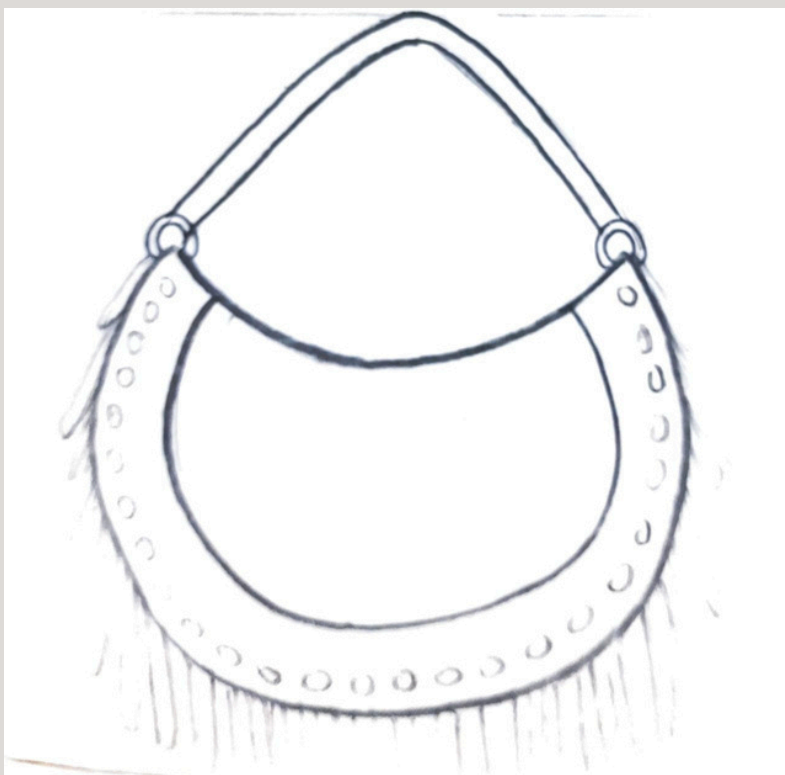
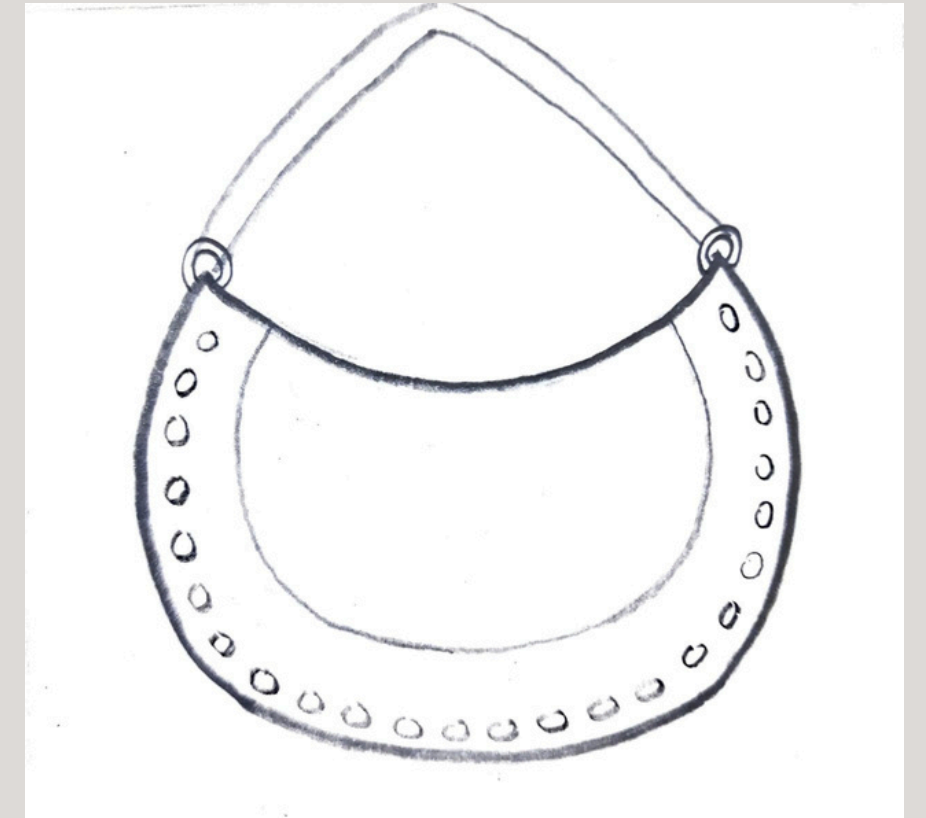
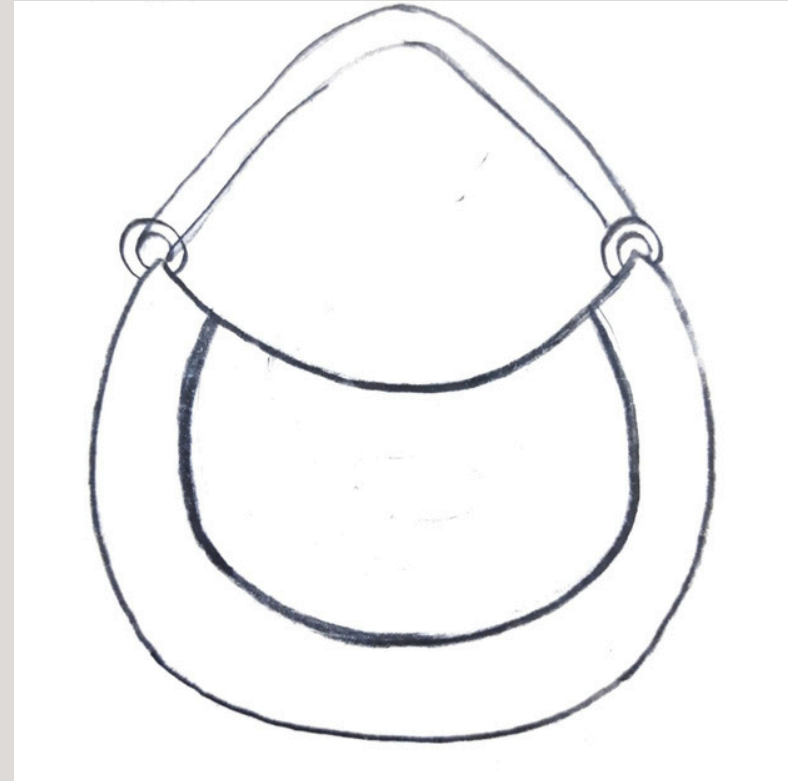
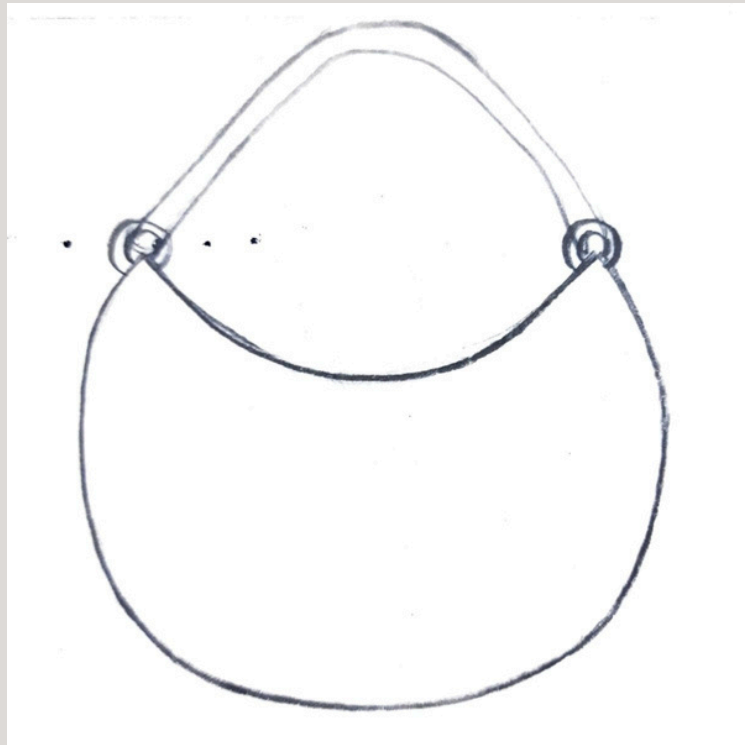
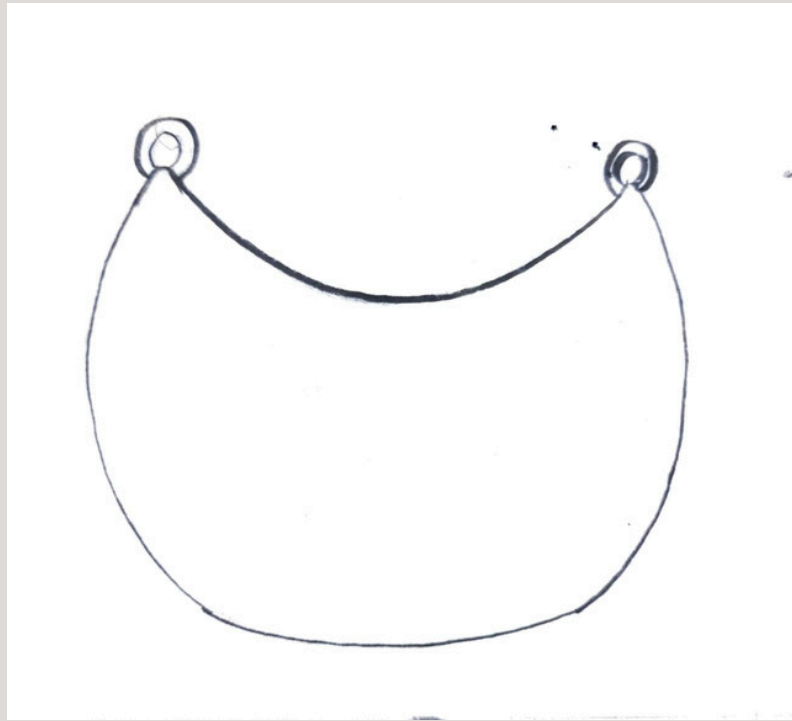
bohemian
(n.) Gypsy. Wanderer.
A person, musician, artist
or writer who lives a free
spirited life and believes
in freedom and love.





Bohemian Luxe

IDEATION



FINAL SKETCH



Front view



Back view

FINAL PRODUCT



Handcrafted Bag made with 100% real leather and stone embellishment

BAG DETAILS

Braided edges

Rivetss



Patch Workk

Green stone

Twisted suede handle

Fringes

Feature	Detail
Main Leather	Veg-tanned cow leather (dark brown and tan),
Accent Leather	suede (handle & fringe)
Hardware	brass rivets and buckles
Gemstone	green stone
Dimensions	11.5 inch W × 11 inch H
Weight	~620 g
Lining	velvet
Closures	Closures Magnetic
Sustainability	Sustainability All leather is chrome-free; no synthetic lining; hardware is brass (recyclable); minimal stitching waste

Design intent centers on effortless versatility and sensory delight. A softly structured comfortable bag, eliminating the boxy stiffness associated with traditional hobo bags. The twisted suede rope handle massages the palm with a velvety grip, and every movement sets the suede fringe dancing—adding kinetic glamour to the wearer's stride. Brass-toned rivets trace an elegant arc across the front, framing a hand-braided edges crowned by a green stone. Together these details create a jewelry-like focal point that stands in for overt logos, positioning the bag as understated luxury.

Material selection is guided by a chrome-free, vegetable-tanned philosophy. cowhide—sourced as a meat-industry by-product—forms the main panels; tan suede off-cuts are re-purposed for the braided edging and fringe, maximizing hide usage. Cutting layouts are nested digitally to achieve less than five percent scrap, and any unavoidable remnants are diverted to a local craft collective for small-goods production.

Lining is peace-silk twill, chosen for both its cruelty-free harvest and breathability in hot climates.

There is no fur, exotic skin, or synthetic PU coating; hardware is brass—fully recyclable and designed to patina gracefully rather than flake or rust. Critical seams use saddle stitching, allowing future repair rather than forced replacement. modular handle encourage owners to restyle the piece season after season, extending emotional as well as physical durability.

By marrying timeless desert aesthetics with contemporary functionality and ethical craftsmanship, the Bohemian Luxe Bag embodies Real Leather. Stay Different's celebration of slow fashion, circular design, and artisanal excellence—proving that luxury and responsibility can, and should, travel together.

THANKYOU