

sara jacqueline morandini

ombraque



water. air. earth. fire.
realms of the cosmos where all
things come into being and
coexist.

light/shadow. good/evil.
positive/negative. nuances of
human instinctive nature.

the drives within the individual
are examined, uncovering his
primordial essence.
in the archetype, one finds the
primal model of all things, the
contents of the collective
unconscious.

origin. chaos. creation.







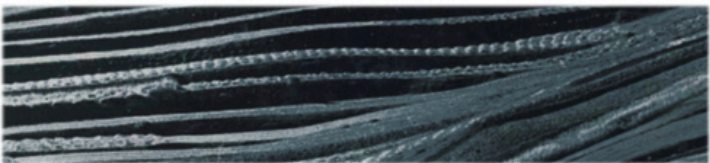
PANTONE®
12-0910 TCX
Lamb's Wool



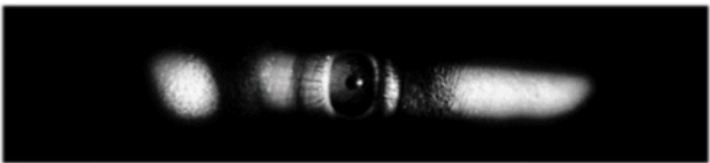
PANTONE®
17-3920 TCX
English Manor



PANTONE®
19-4312 TSX
Submerged



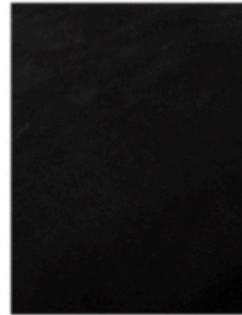
PANTONE®
20-0198 TPM
Moondrop Grapes



New Zealand
Lambskin



Full-grain
pebbled Calf
Leather



Smooth Calfskin
with a matte
finish



Embossed
Crocodile
Leather



ARGENT GLACÉ



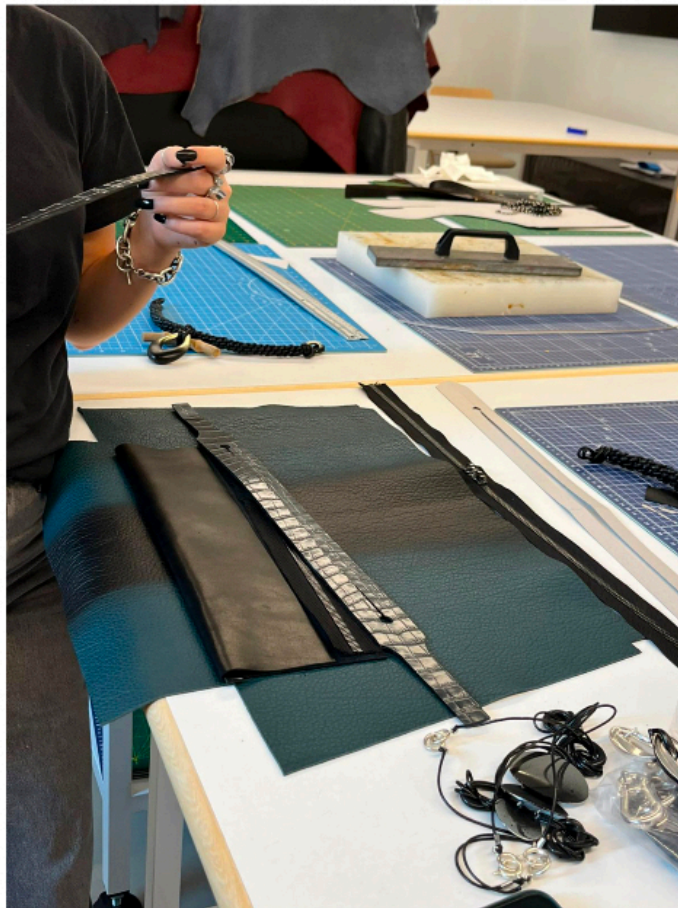
ARGENT DÉGRADÉ



LUMIÈRE DÉGRADÉE

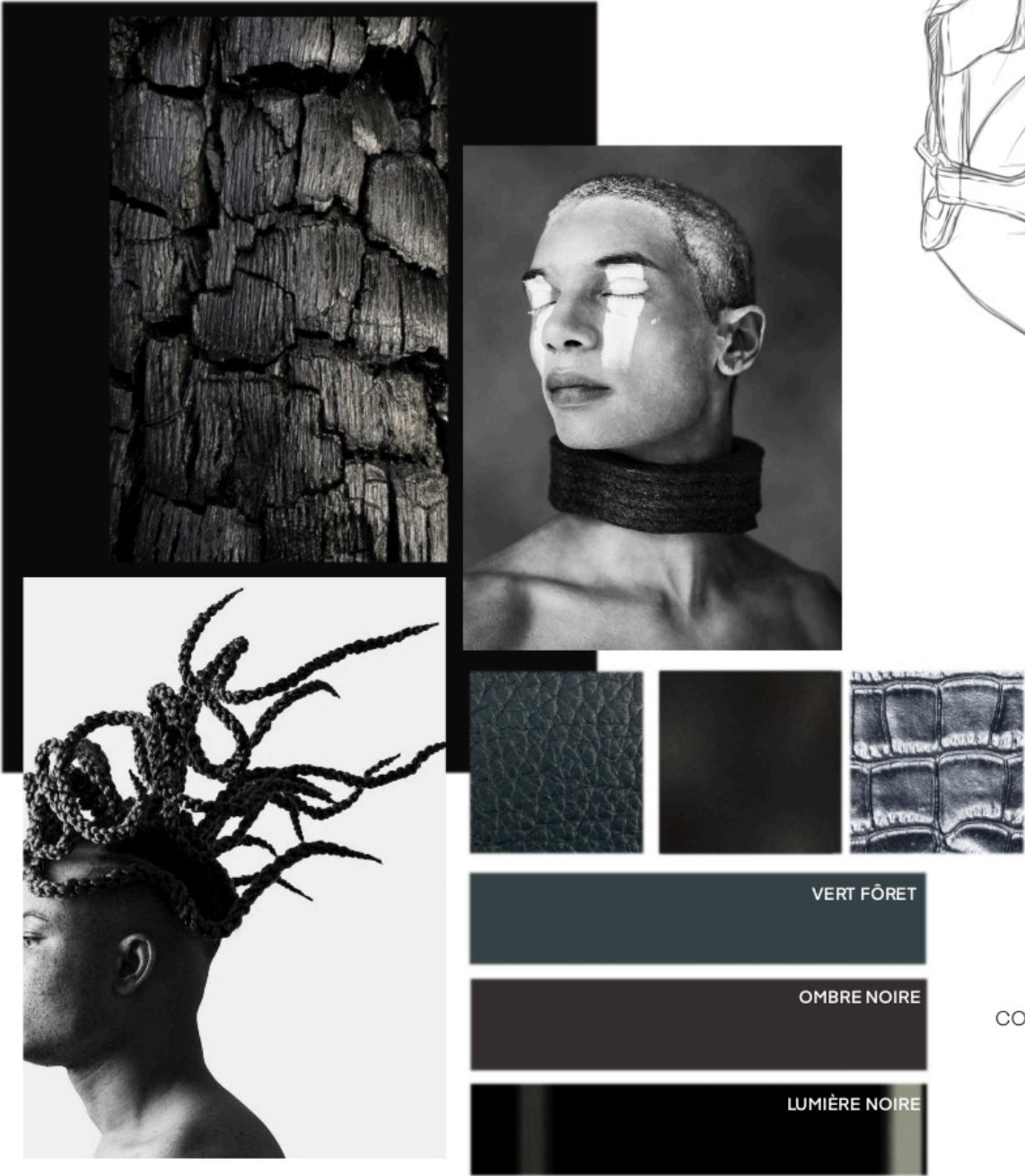


LUMIÈRE NOIRE



dimensions: 39 x 23 x 18 cm handle drop length: 16 cm

duffle bag in full-grain pebbled calf leather with front external nappa pocket and embossed crocodile leather detailing. handle with adjustable leather lacing.



handle with leather lacing

metal buckle in silver finish

internal lining in alcantara

zip closure

external pocket with braided leather zip puller

conical stud detail

metal hardware in gunmetal and matte black finishes



dimensions: 39 x 23 x 18 cm handle drop length: 16 cm
duffle bag in full-grain pebbled calf leather with front external nappa pocket and embossed crocodile leather detailing. handle with adjustable leather lacing.

sara jacqueline morandini | ombrage

handle with leather lacing

metal buckle in silver finish

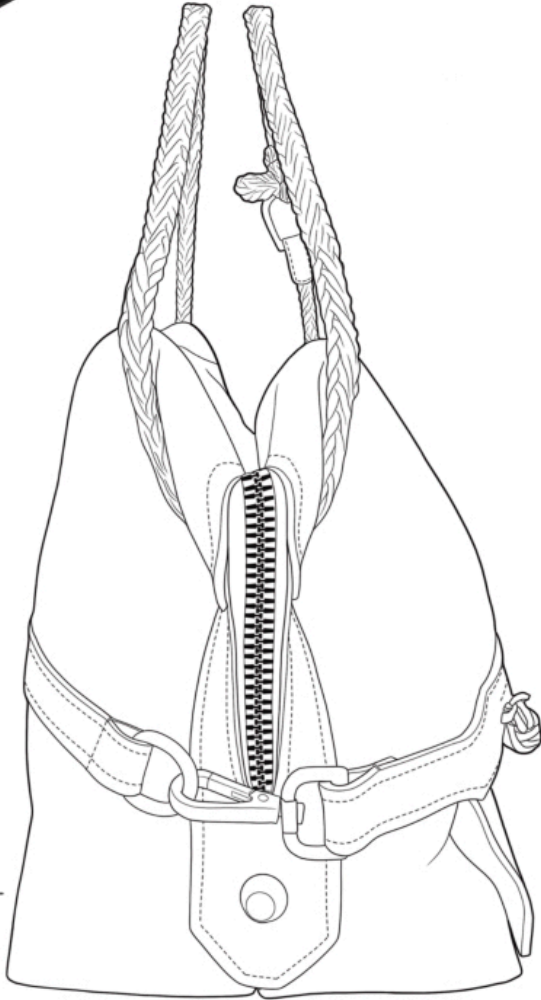
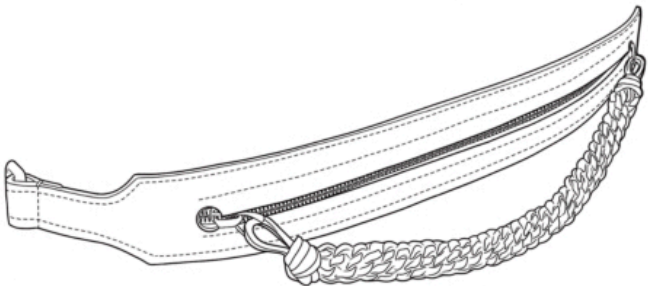
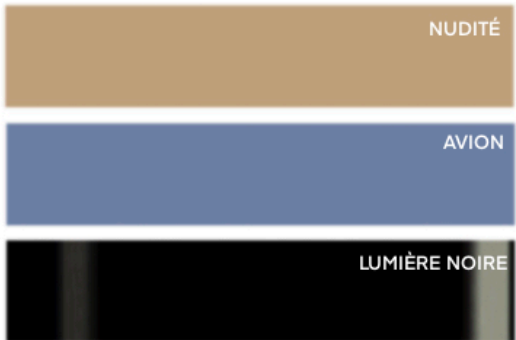
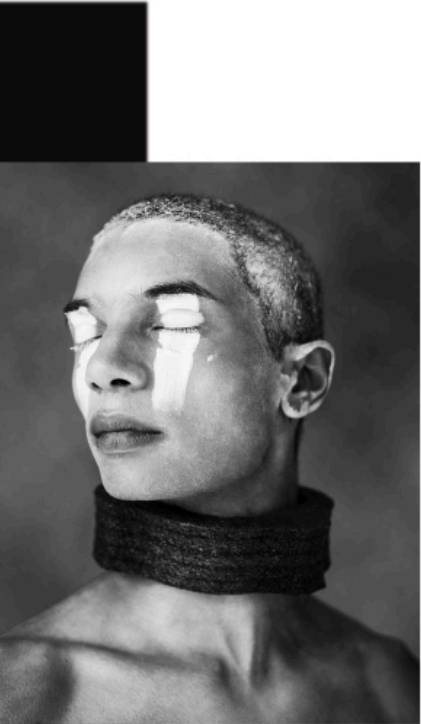
internal lining in alcantara

zip closure

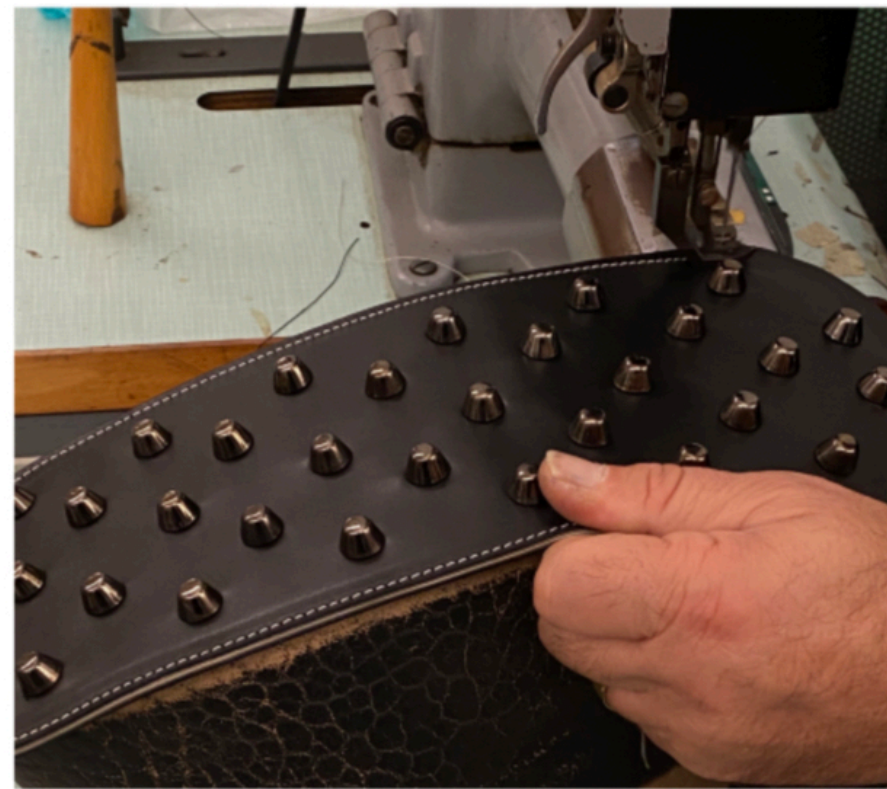
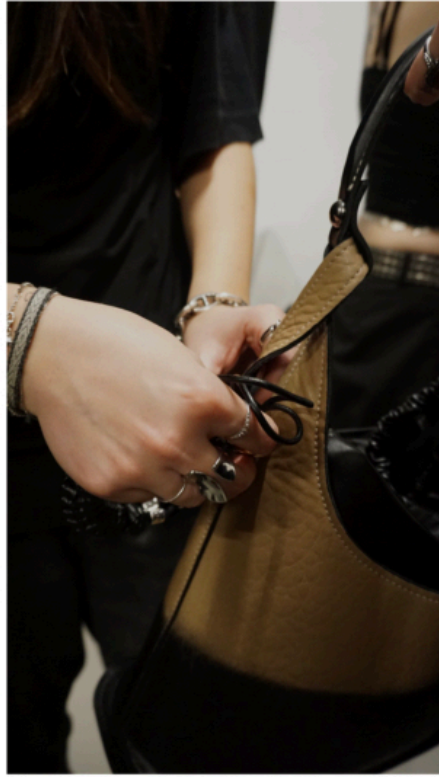
external pocket
with braided
leather zip puller

conical stud
detail

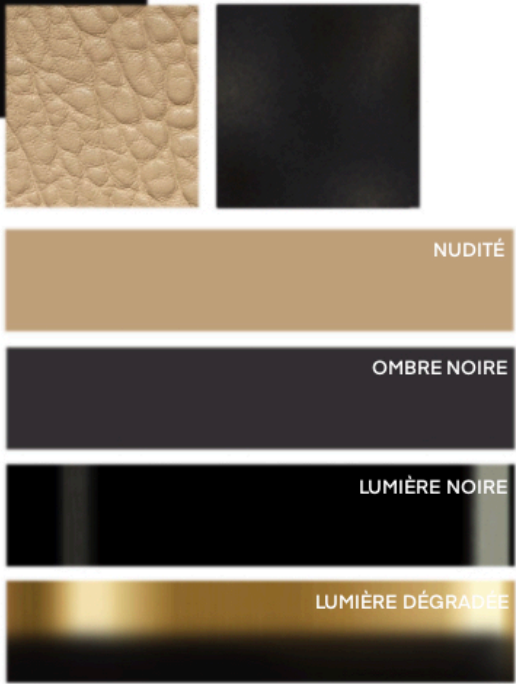
metal hardware in gunmetal and
matte black finishes



dimensions: 39 x 23 x 18 cm handle drop length: 16 cm
variants: "New Zealand" lambskin in Nude / "New Zealand" lambskin in Avion / metallic-grain calfskin
duffle bag with external nappa leather pocket on the front panel, featuring embossed crocodile details. adjustable handle with leather lacing.



dimensions: 37 x 28 x 14 cm handle drop length: 20 cm
hobo bag in "New Zealand" lambskin with internal pouch and nappa leather base. smooth calf leather handle with stud detailing.



riveted half-dome studs in
gunmetal finish

smooth calf
leather handle

internal pouch in
nappa leather

oval spring rings
in gold finish

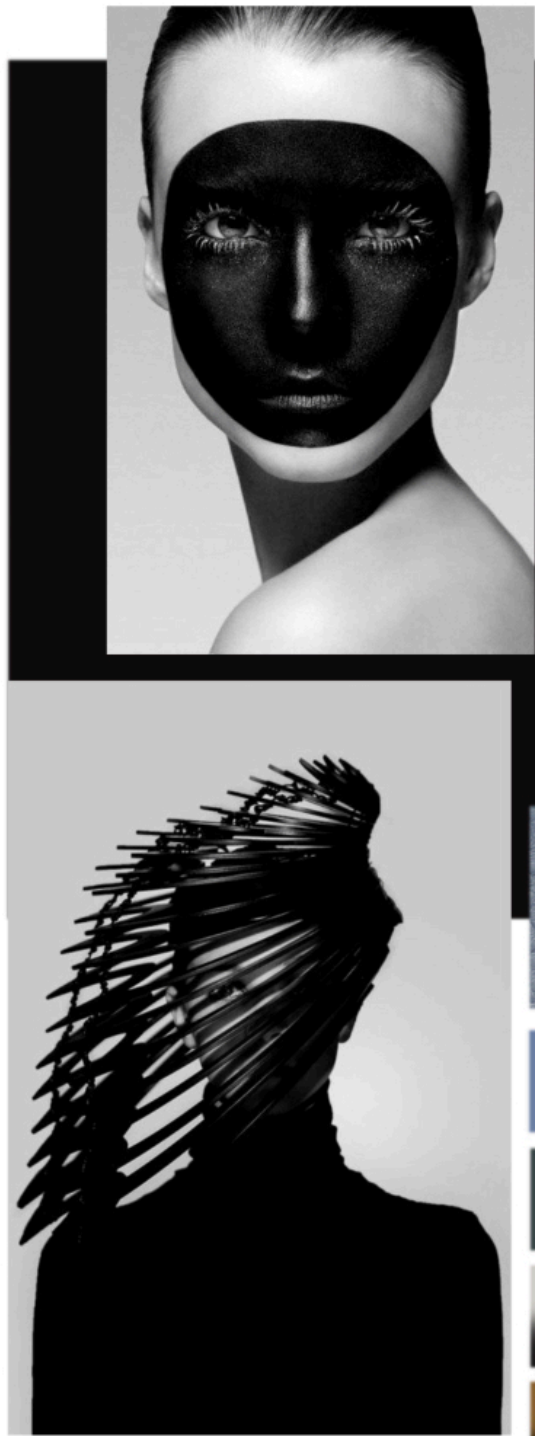
braided trim with
shaded gold drop
detail and bamboo
accent

metal hardware in gunmetal and
gold finishes

leather lining

dimensions: 37 x 28 x 14 cm handle drop length: 20 cm
hobo bag in “New Zealand” lambskin with internal pouch and nappa leather base. smooth calf leather handle with stud detailing.

sara jacqueline morandini | ombrage



riveted half-dome studs with
gunmetal finish

smooth calf
leather handle

internal pouch in
nappa leather

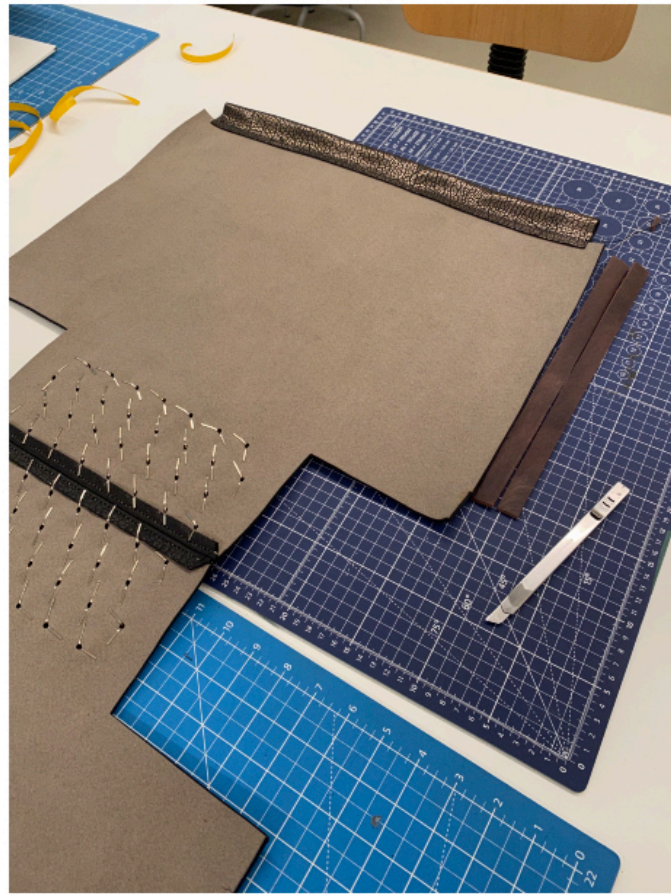
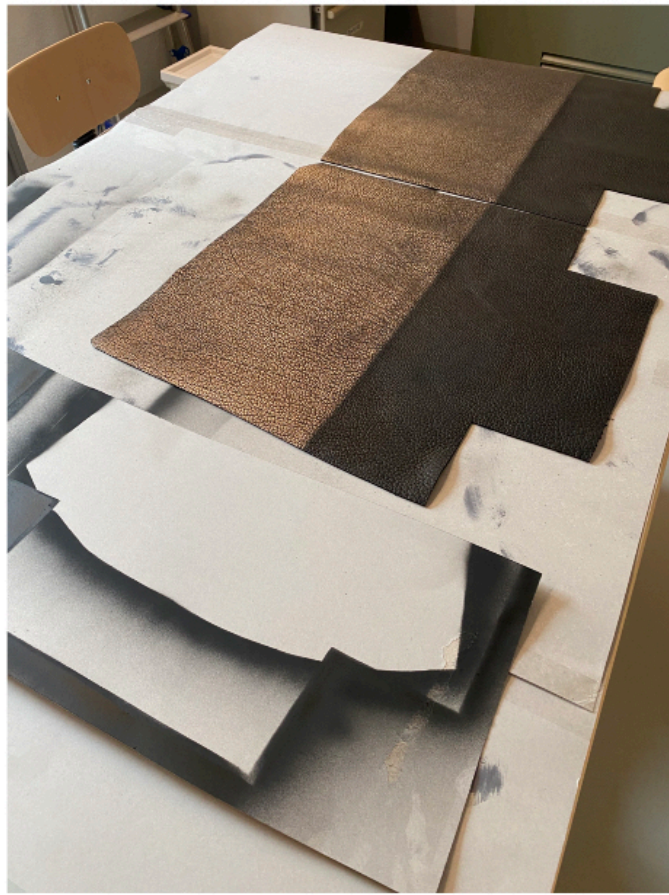
oval spring rings
with silver finish

braided trim with
shaded silver drop
detail and bamboo
accent

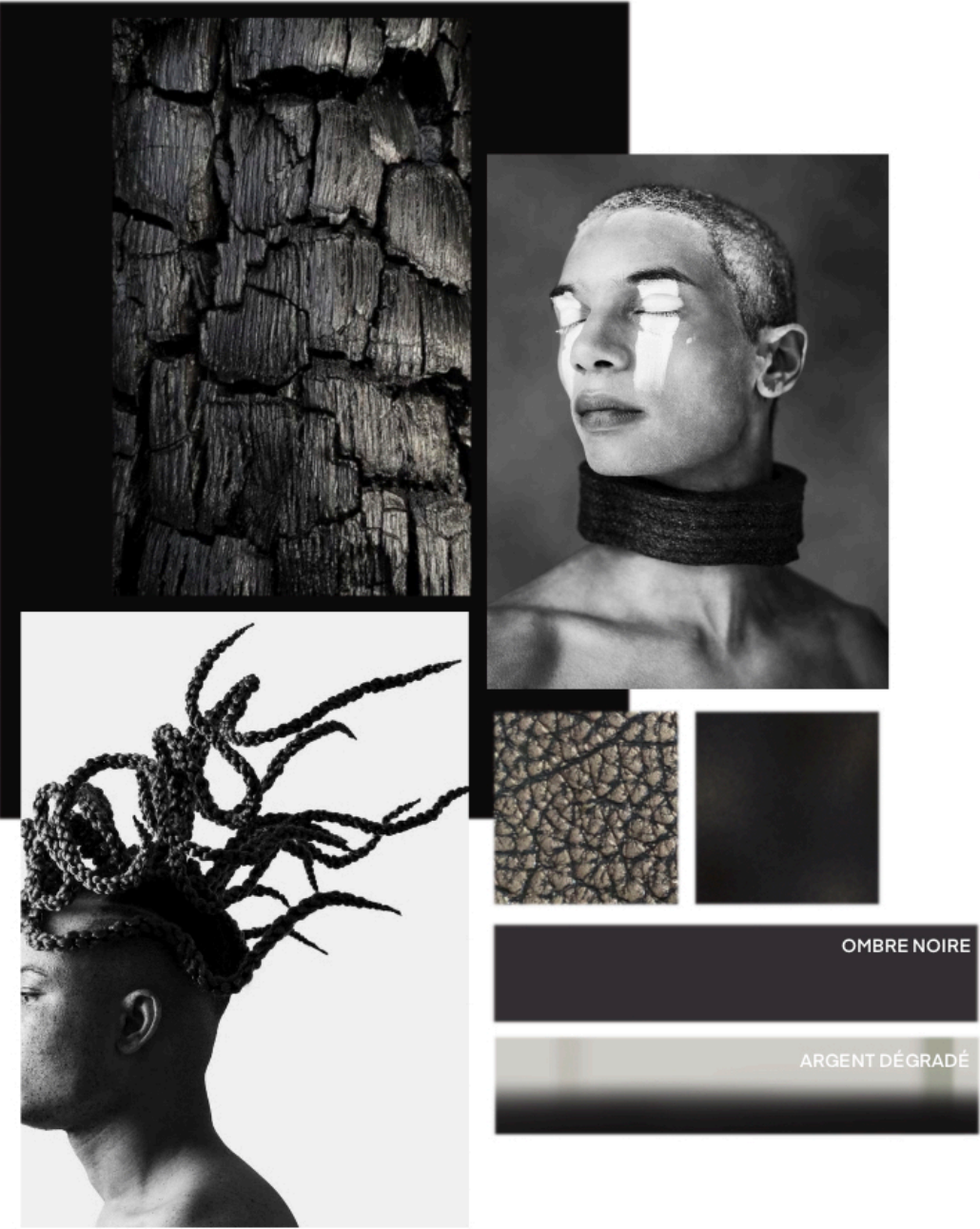
metal hardware in gunmetal and
silver finishes

leather lining

dimensions: 37 x 28 x 14 cm handle drop length: 20 cm
variants: "New Zealand" lambskin in Avion / full-grain pebbled calf leather / metallic-grain calfskin
hobo bag with internal pouch and nappa leather base. smooth calf leather handle with stud detailing.



dimensions: 30 x 35 x 23 cm handle drop length: 30 cm
soft hobo bag in metallic full-grain pebbled calf leather with drawstring closure, central trim, and black gradient on the front panel. handle with braided leather detailing.



handle with braided
leather detailing

drawstring closure with
braided leather cords

metal tips in
silver finish

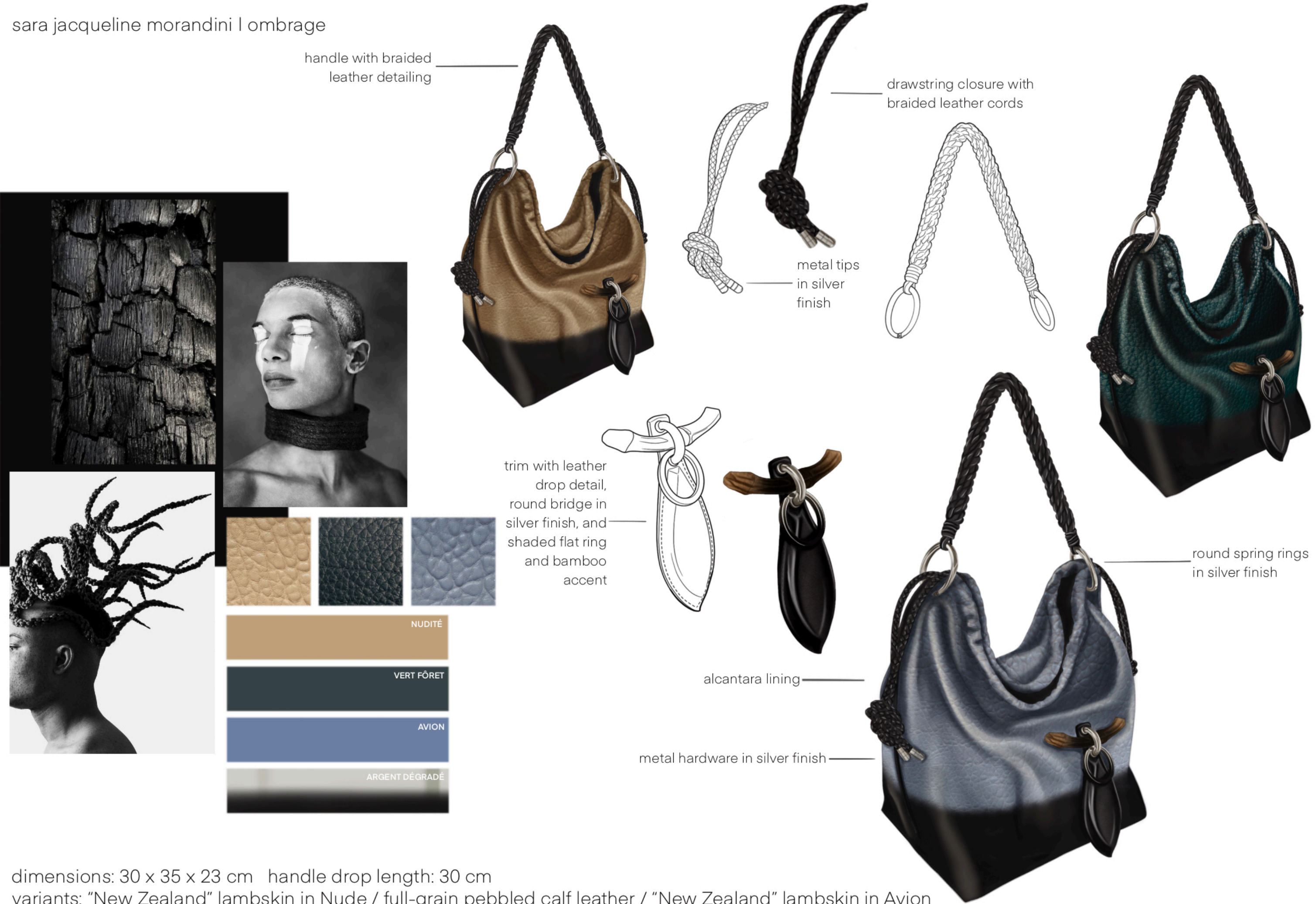
trim with leather
drop detail, round
bridge in silver
finish, and shaded
flat ring and
bamboo accent

round spring rings
in silver finish

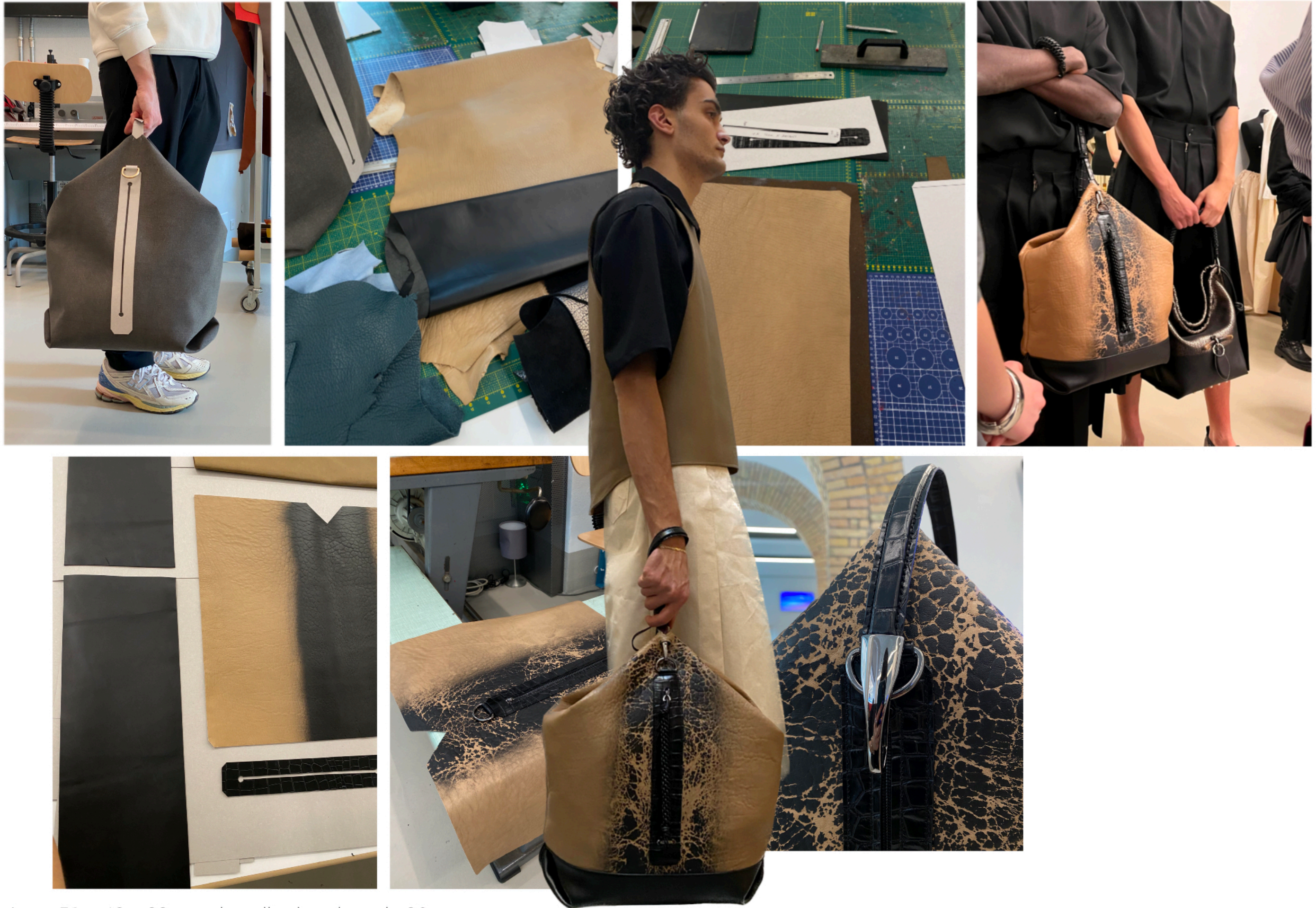
alcantara lining

metal hardware in silver finish

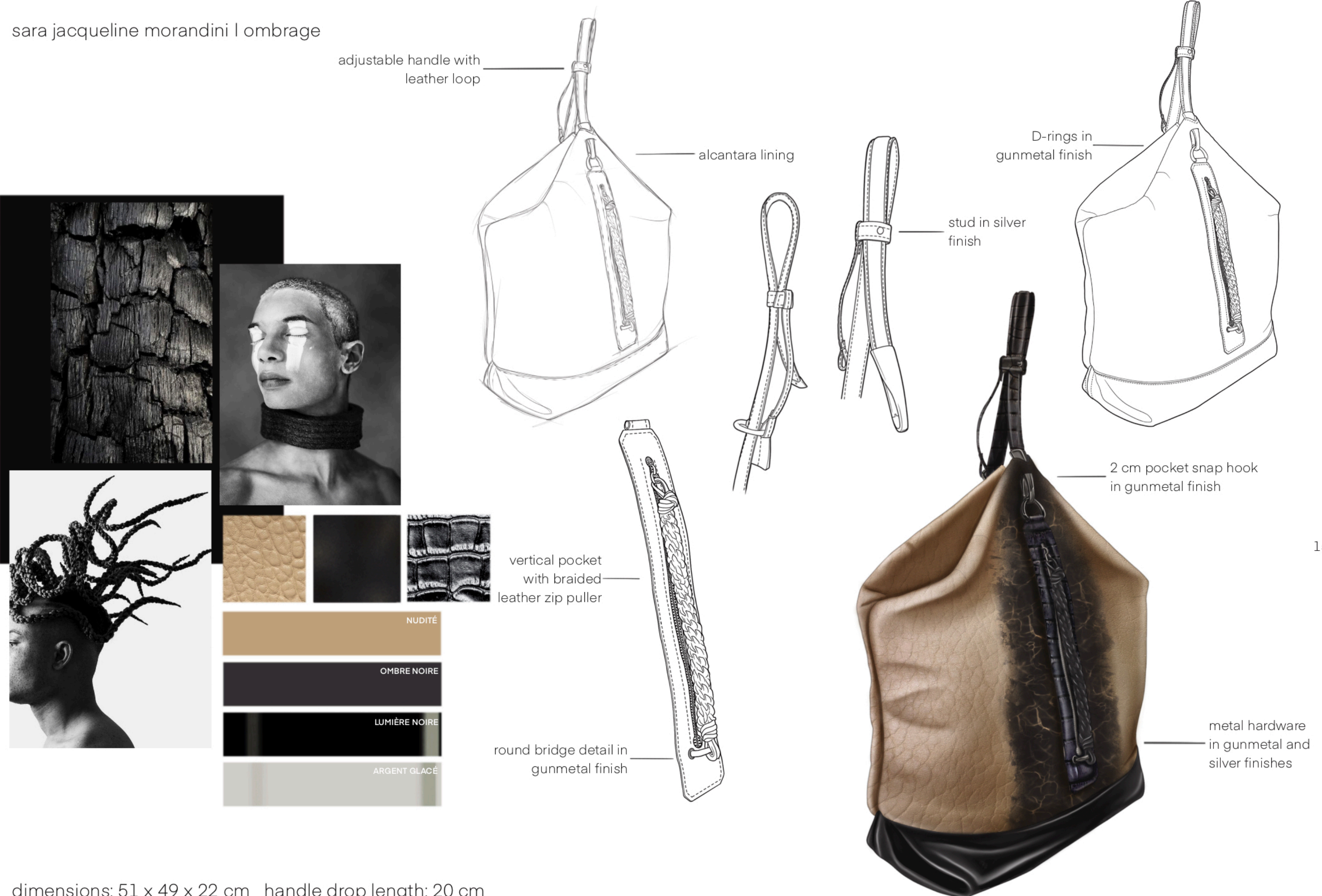
dimensions: 30 x 35 x 23 cm handle drop length: 30 cm
soft hobo bag in metallic full-grain pebbled calf leather with drawstring closure, central trim, and black gradient on the front panel. handle with braided leather detailing.



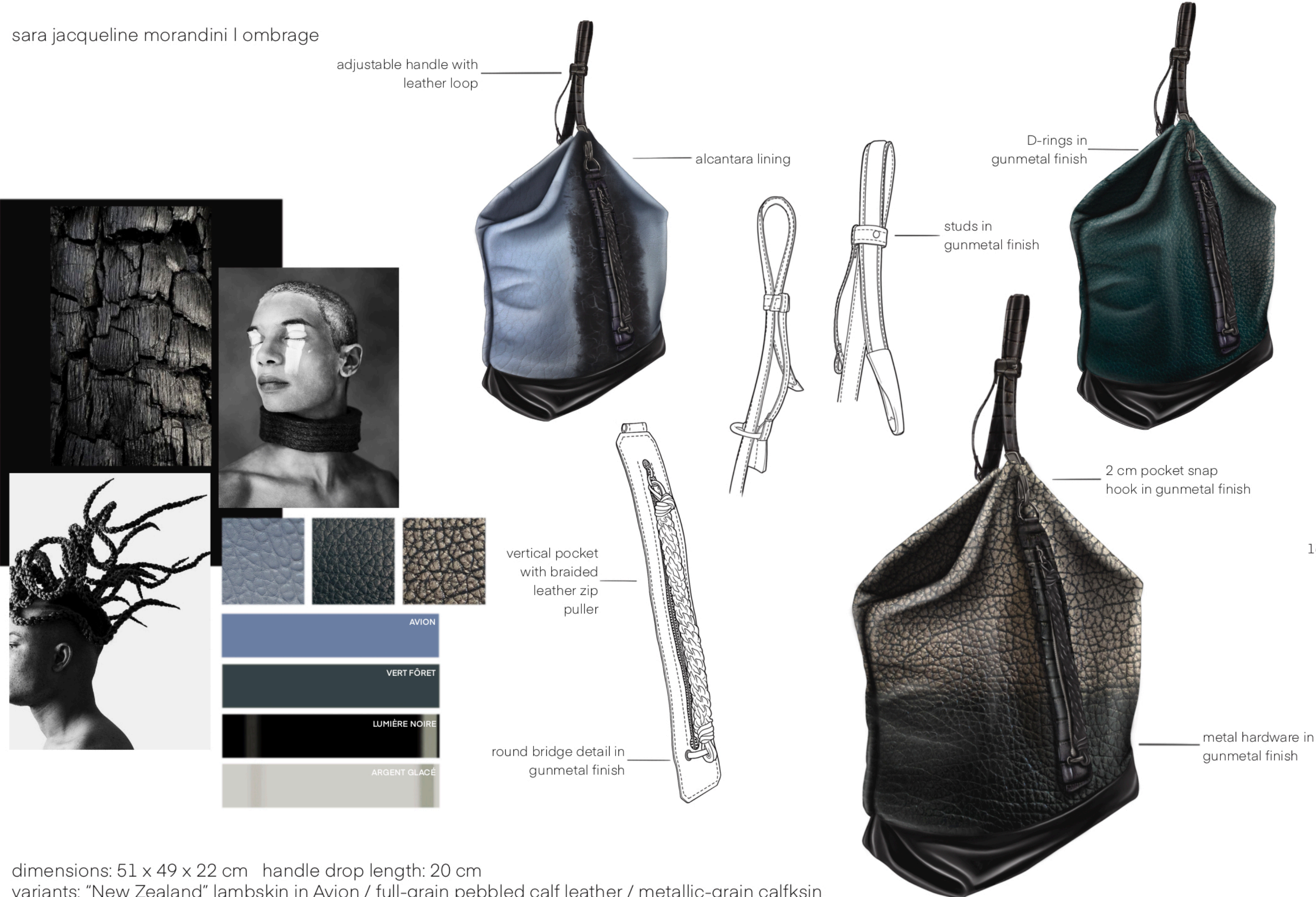
dimensions: 30 x 35 x 23 cm handle drop length: 30 cm
variants: "New Zealand" lambskin in Nude / full-grain pebbled calf leather / "New Zealand" lambskin in Avion
soft hobo bag with drawstring closure, central trim, and black gradient on the panels. handle with braided leather detailing.



dimensions: 51 x 49 x 22 cm handle drop length: 20 cm
shoulder bag in "New Zealand" lambskin with vertical central pocket and black gradient effect. adjustable handle in embossed crocodile leather.



dimensions: 51 x 49 x 22 cm handle drop length: 20 cm
shoulder bag in “New Zealand” lambskin with vertical central pocket and black gradient effect. adjustable handle in embossed crocodile leather.



adjustable handle with leather loop

alcantara lining

D-rings in gunmetal finish

studs in gunmetal finish

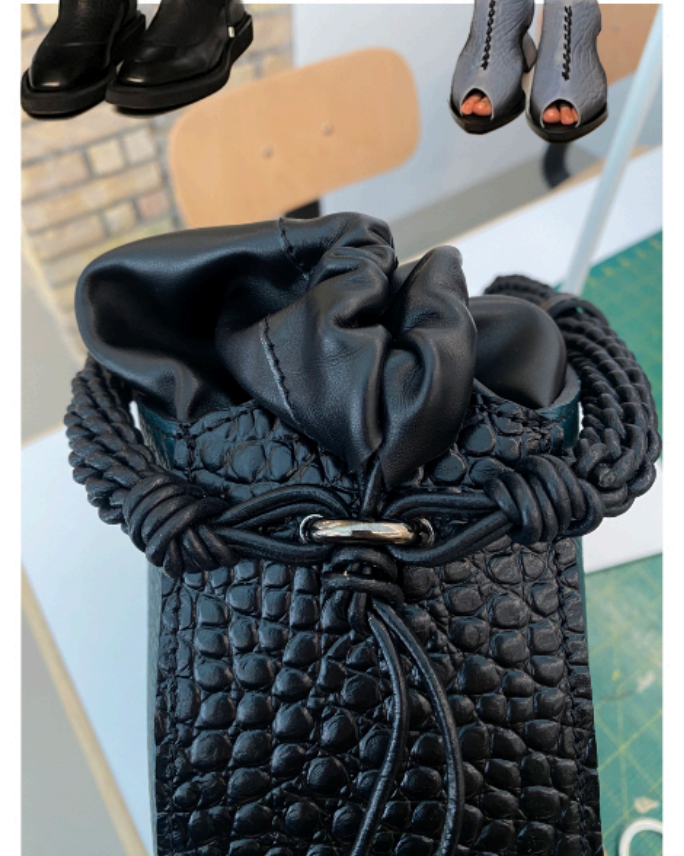
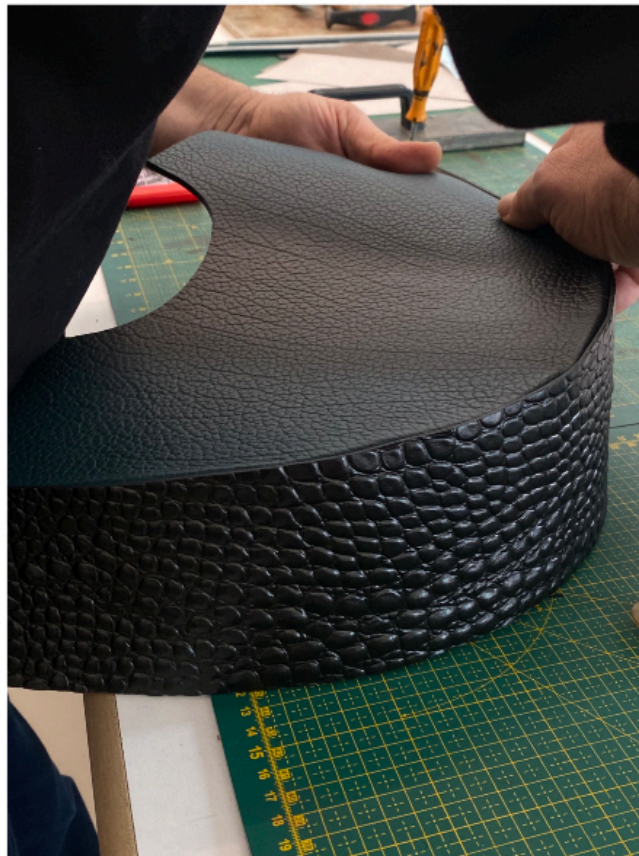
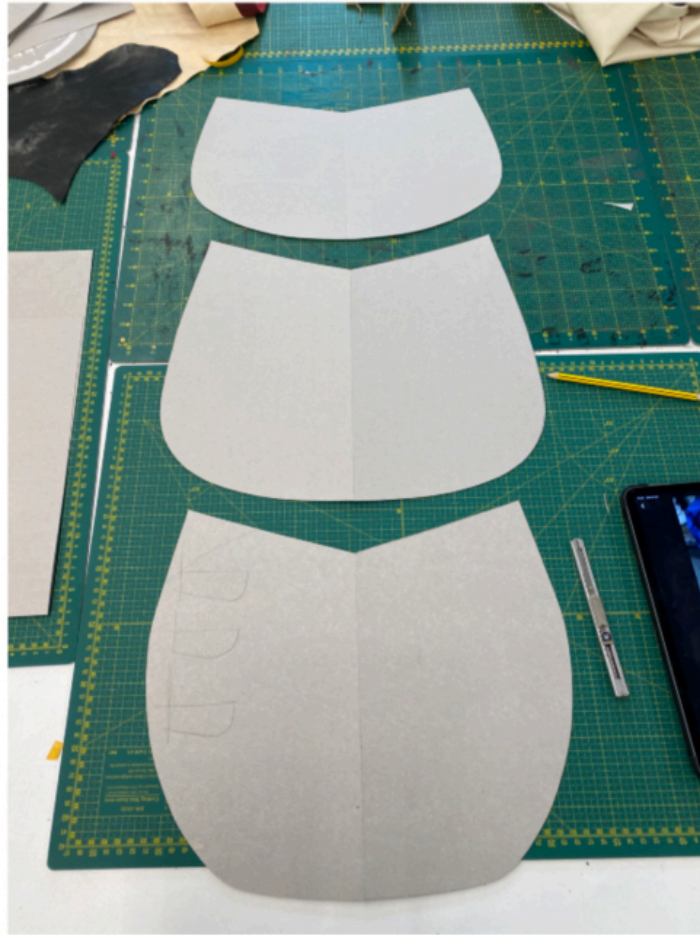
2 cm pocket snap hook in gunmetal finish

vertical pocket with braided leather zip puller

round bridge detail in gunmetal finish

metal hardware in gunmetal finish

dimensions: 51 x 49 x 22 cm handle drop length: 20 cm
variants: "New Zealand" lambskin in Avion / full-grain pebbled calf leather / metallic-grain calfskin
shoulder bag featuring a central vertical pocket and a subtle black gradient. adjustable handle in embossed crocodile leather.



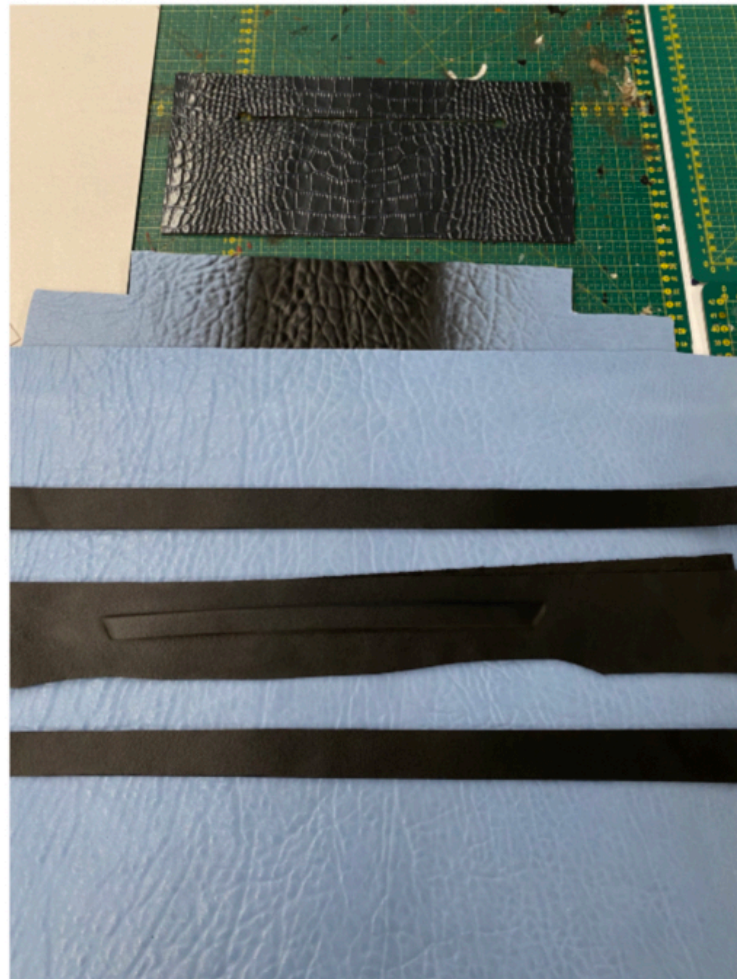
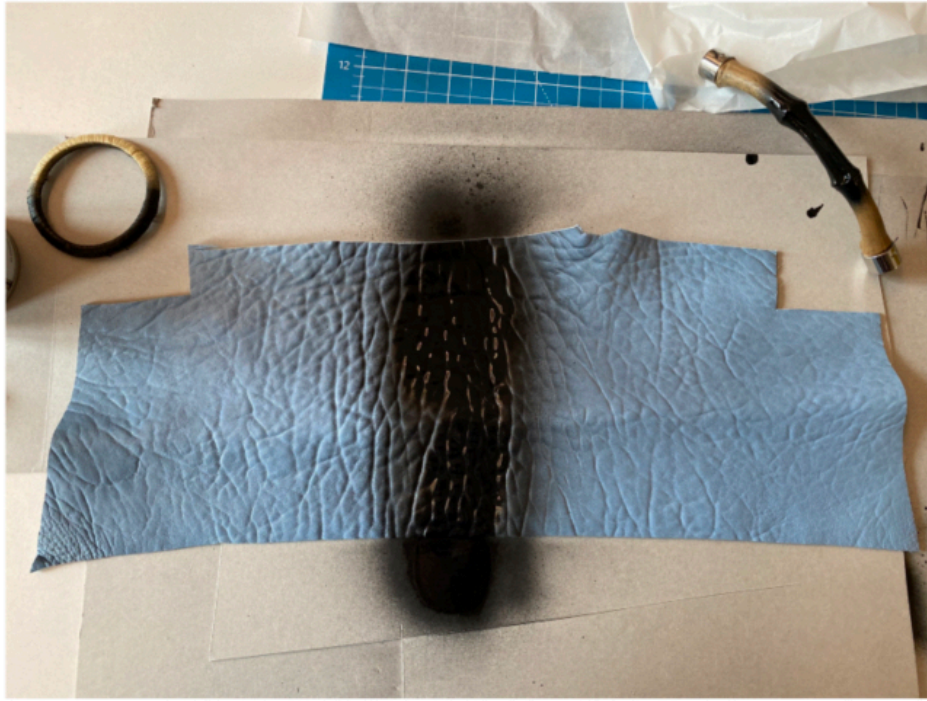
dimensions: 33 x 25 x 9 cm handle drop length: 10 cm
half moon bag in full-grain pebbled calf leather with vertical gradient and central trim. nappa leather pouch and embossed crocodile leather sides. handles with leather braid detailing.



dimensions: 33 x 25 x 9 cm handle drop length: 10 cm
half moon bag in full-grain pebbled calf leather with vertical gradient and central trim. nappa leather pouch and embossed crocodile leather sides. handles with leather braid detailing.



dimensions: 33 x 25 x 9 cm handle drop length: 10 cm
variants: metallic-grain calfskin / "New Zealand" lambskin in Avion / "New Zealand" lambskin in Nude
half moon bag with a vertical gradient and central trim. nappa leather pouch and embossed crocodile side panels. handles with braided leather detailing.



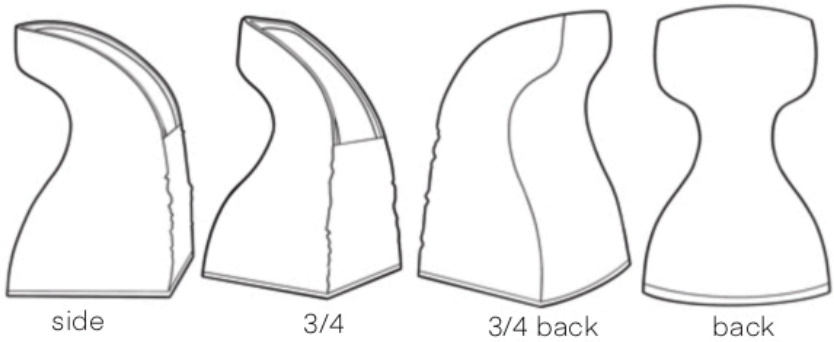
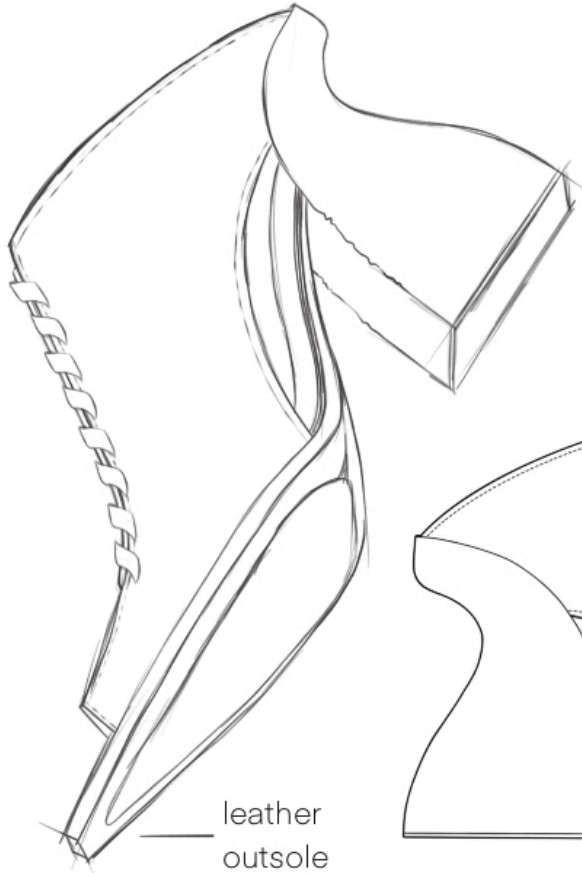
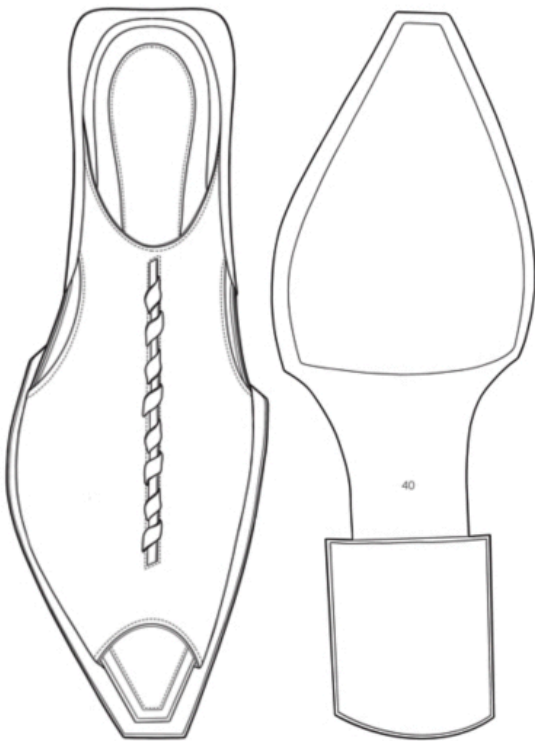
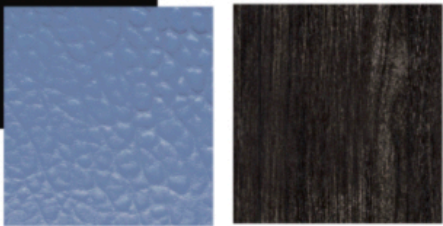
dimensions: 44 x 46 x 8 cm handle drop length: 12 cm
tote bag in "New Zealand" lambskin with patch pocket in embossed crocodile leather on the back, and black gradient effect. smooth leather handle and shoulder strap with leather lacing.



dimensions: 44 x 46 x 8 cm handle drop length: 12 cm
tote bag in “New Zealand” lambskin with patch pocket in embossed crocodile leather on the back, and black gradient effect. smooth leather handle and shoulder strap with leather lacing.



dimensions: 44 x 46 x 8 cm handle drop length: 12 cm
variants: "New Zealand" lambskin in Nude / metallic-grain calfskin / full- grain pebbled calf leather
tote bag with back patch pocket in embossed crocodile leather and black gradient on the front panel. smooth calfskin in leather handle and shoulder strap with leather lacing.

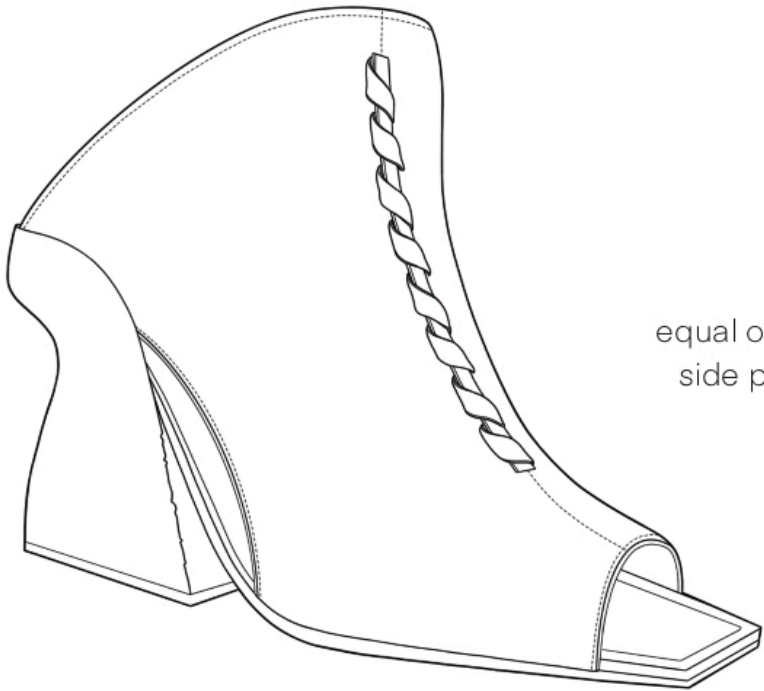


heel in varnished beechwood. the internal part has a "raw finish"



handmade leather lacing on the raw edge

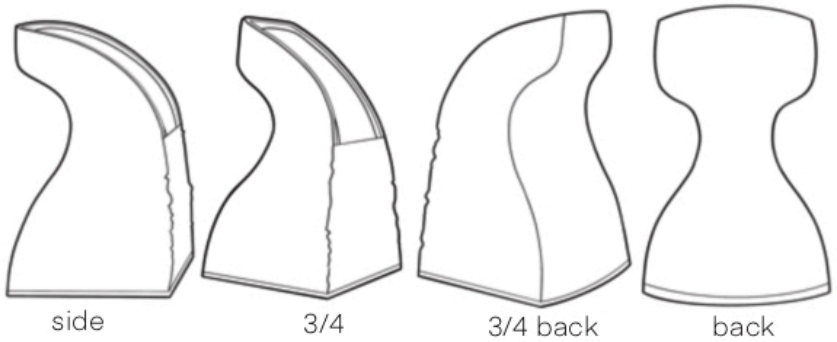
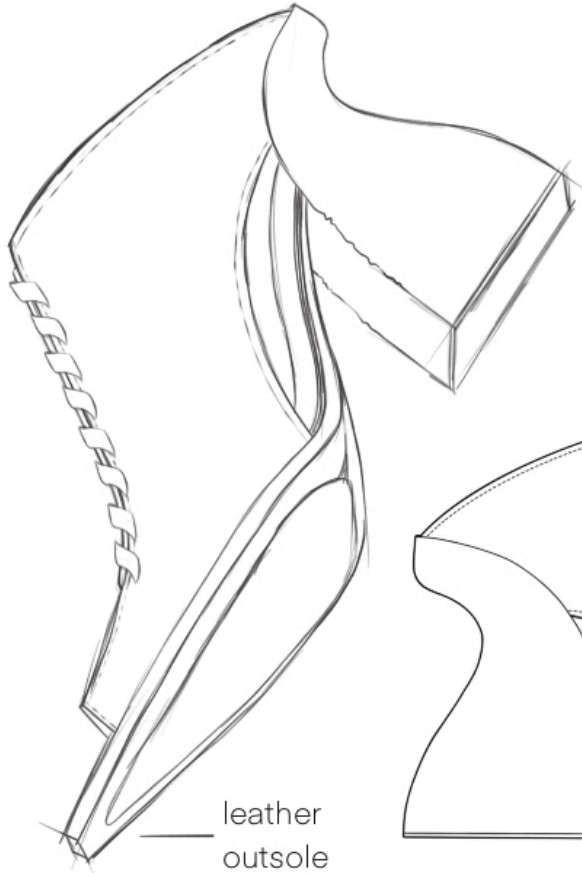
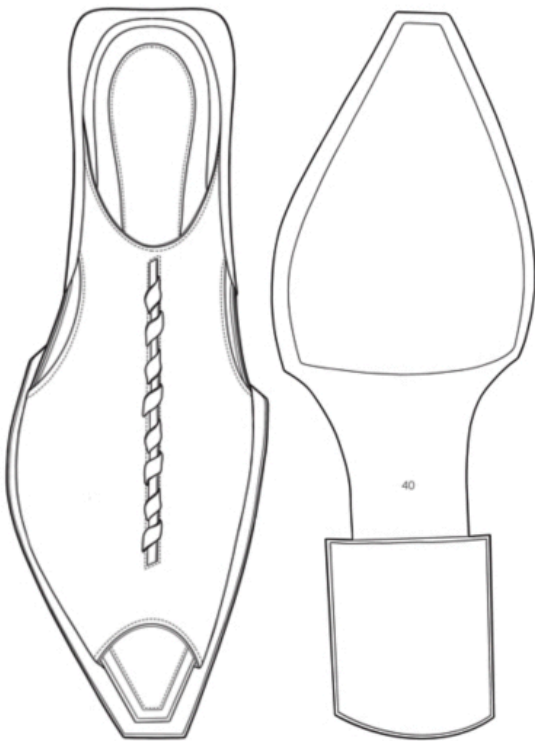
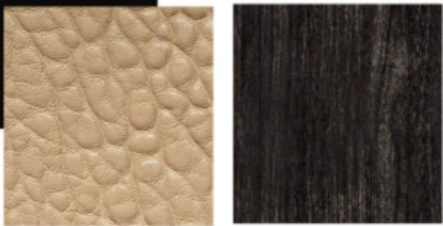
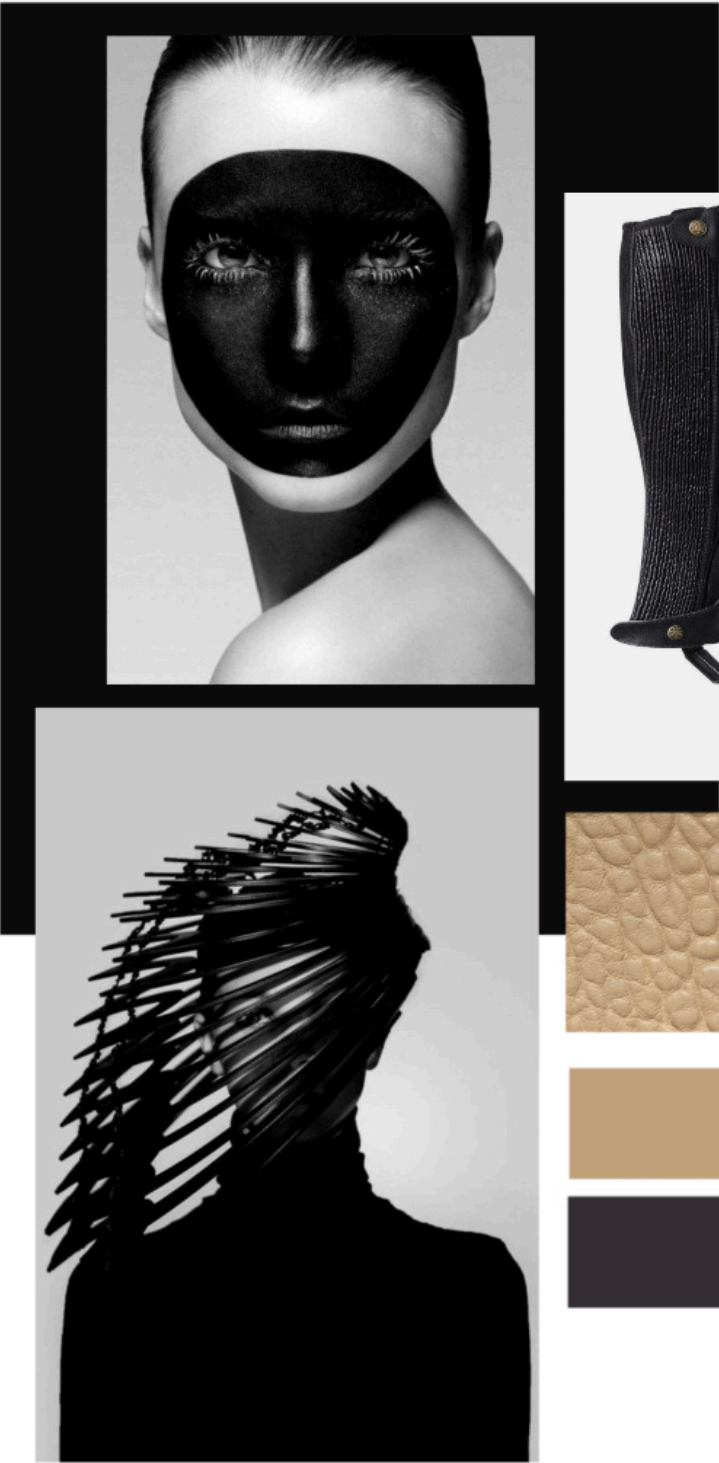
leather outsole



equal open side parts



heel height: 6 cm heel "hollow crown" height: 2 cm
sabot in "New Zealand" lambskin with an ebony-varnished beechwood heel and an "hollow crown" to place the heel section of the feet.

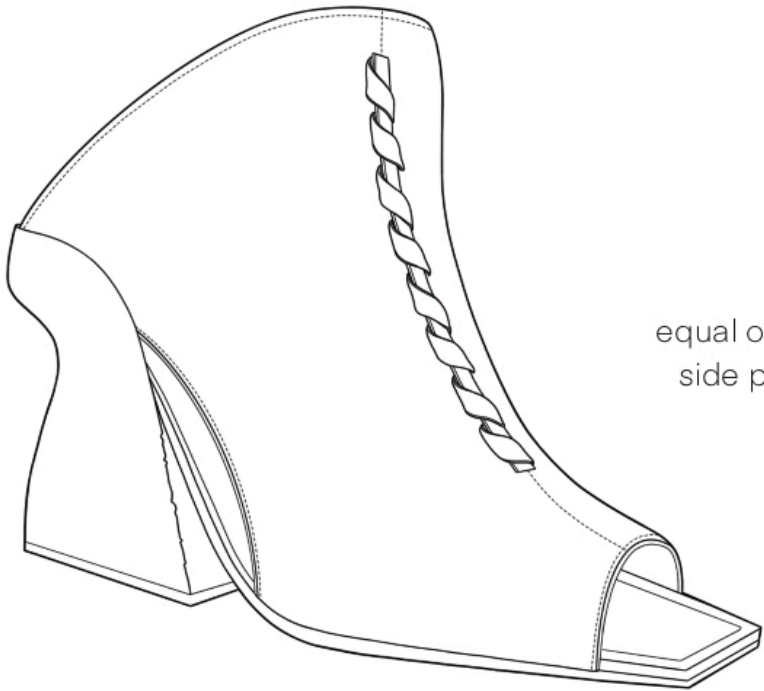


heel in varnished beechwood. the internal part has a "raw finish"



handmade leather lacing on the raw edge

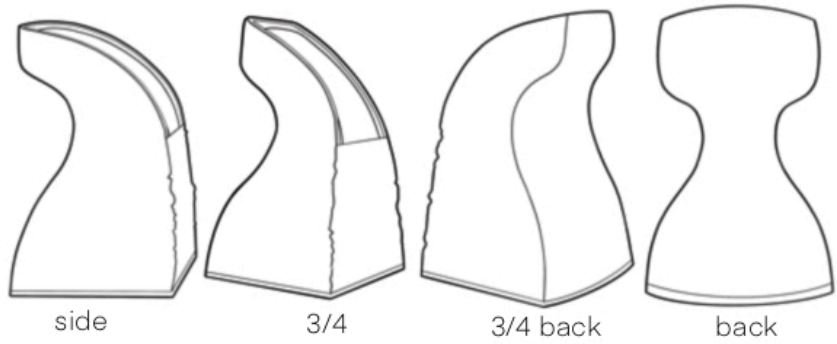
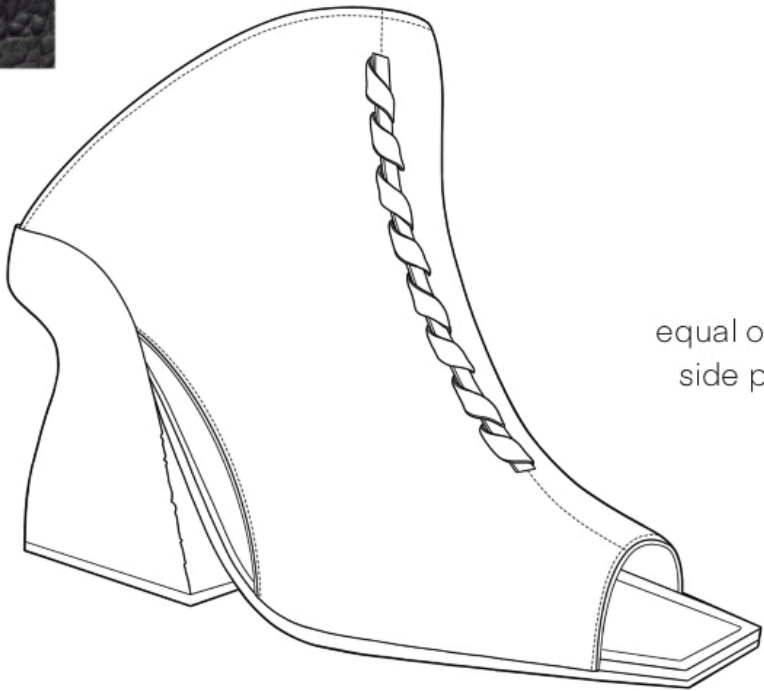
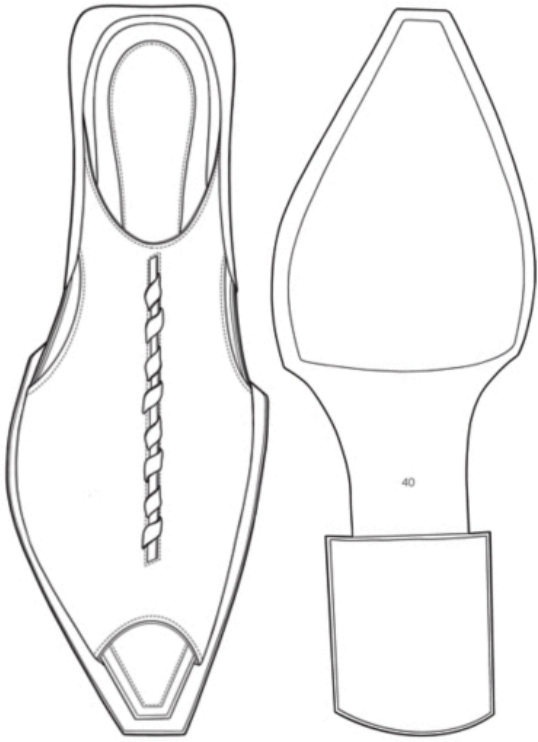
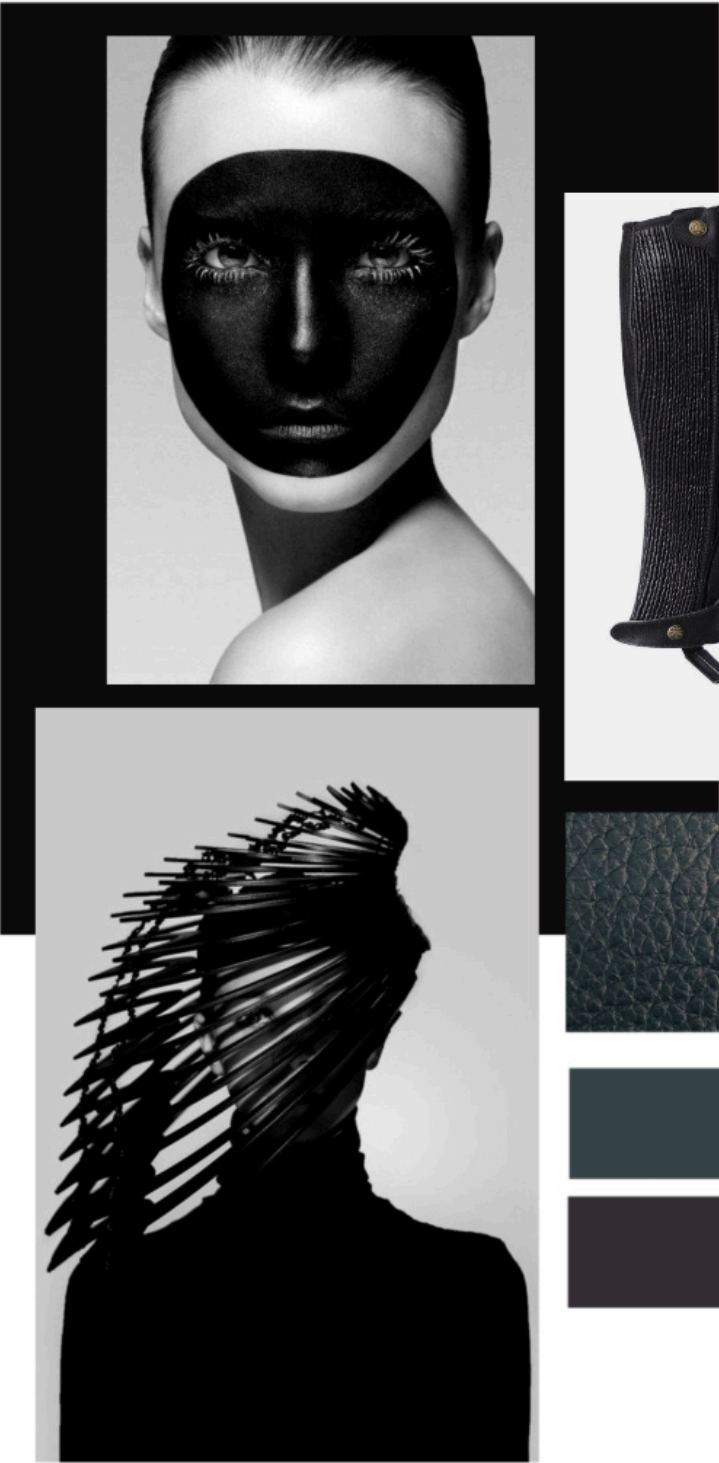
leather outsole



equal open side parts

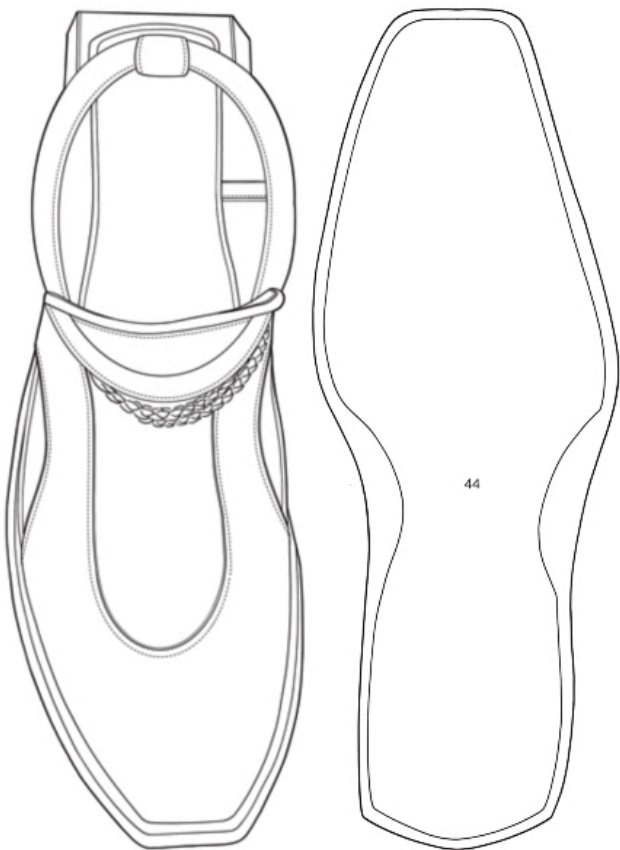


heel height: 6 cm heel "hollow crown" height: 2 cm
sabot in "New Zealand" lambskin with an ebony-varnished beechwood heel and an "hollow crown" to place the heel section of the feet.

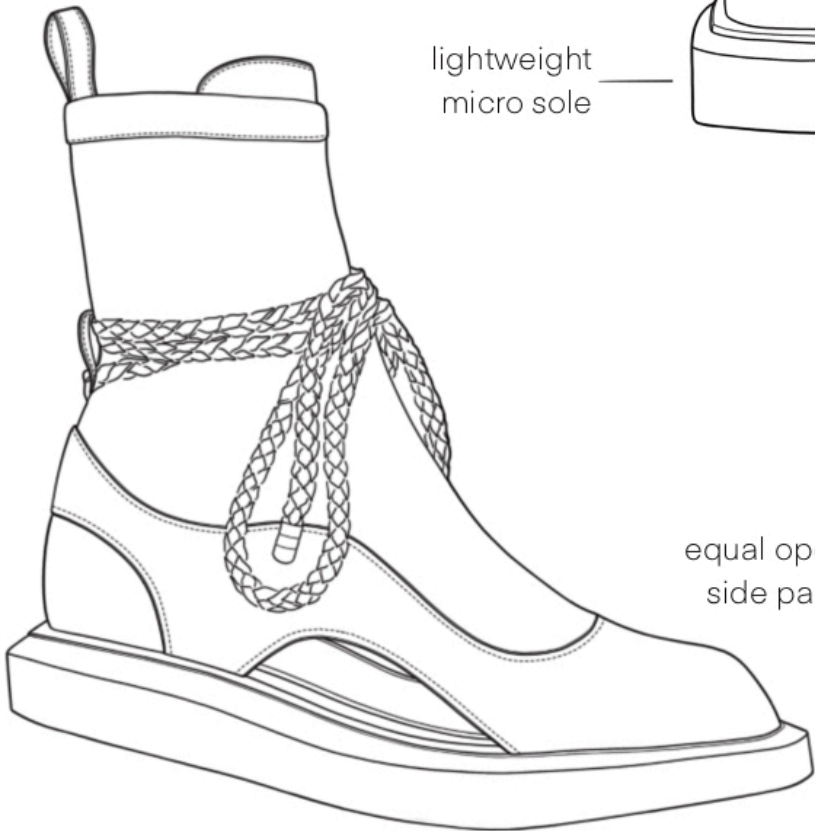


heel height: 6 cm heel "hollow crown" height: 2 cm
variants: full-grain pebbled calf leather / metallic-grain calfskin / "New Zealand" lambskin in Black
sabot with an ebony-varnished beechwood heel and an "hollow crown" to place the heel section of the feet.

zip puller gunmetal finish



lightweight
micro sole



leather loop

leather braided rope



small metal steel detail at
the end of the rope

bottom upper part stiff leather

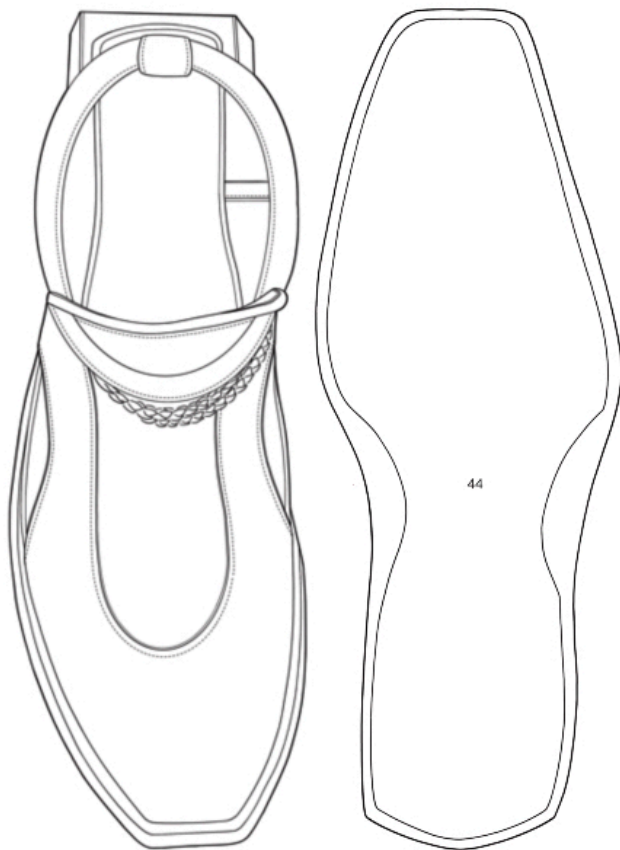
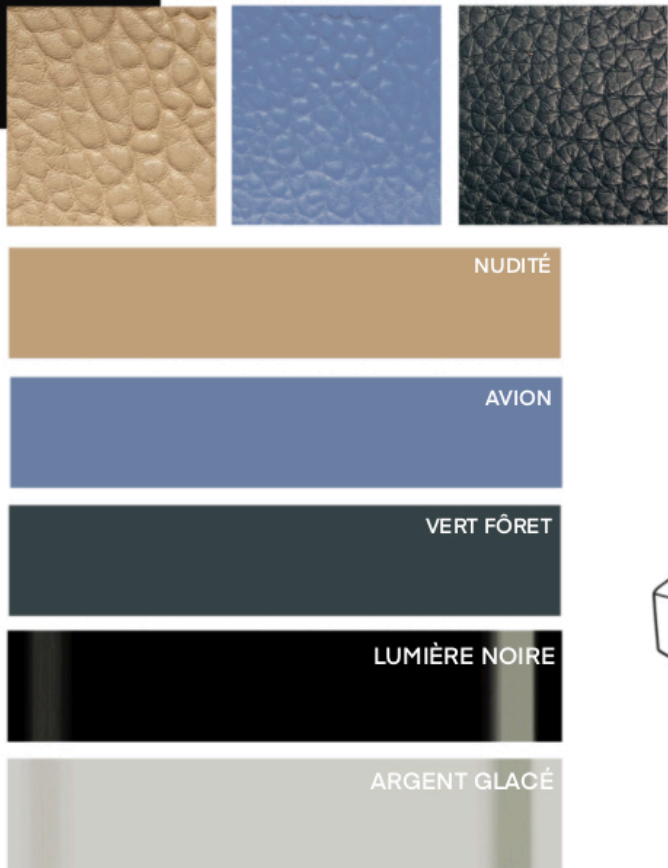
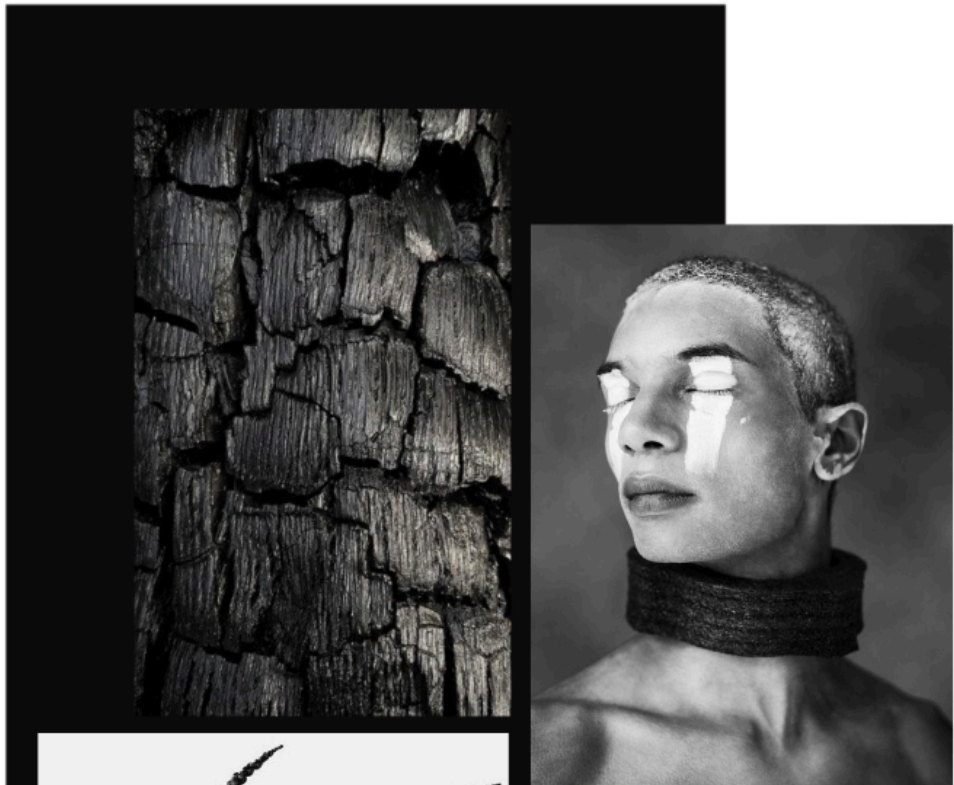


equal open
side parts



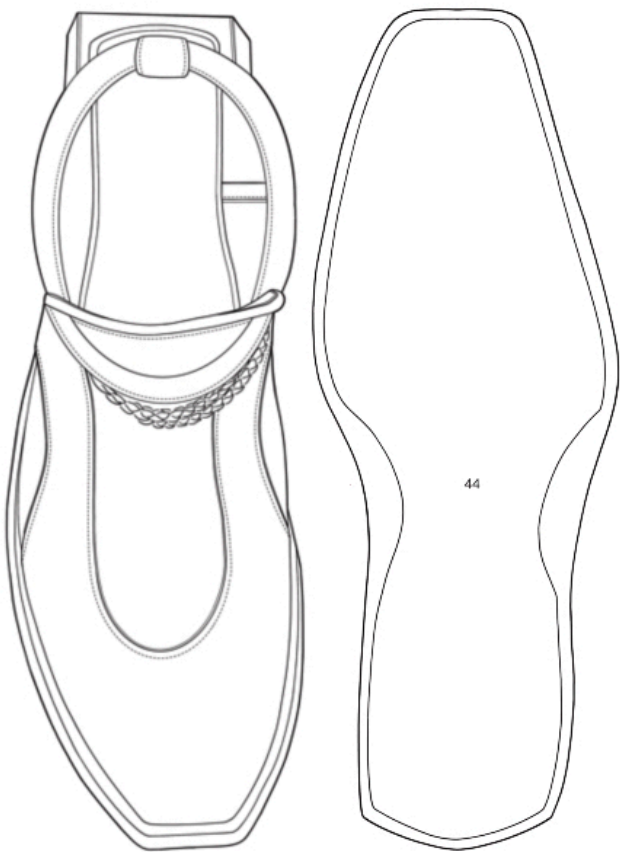
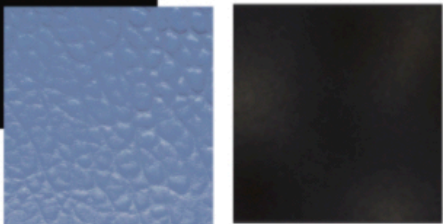
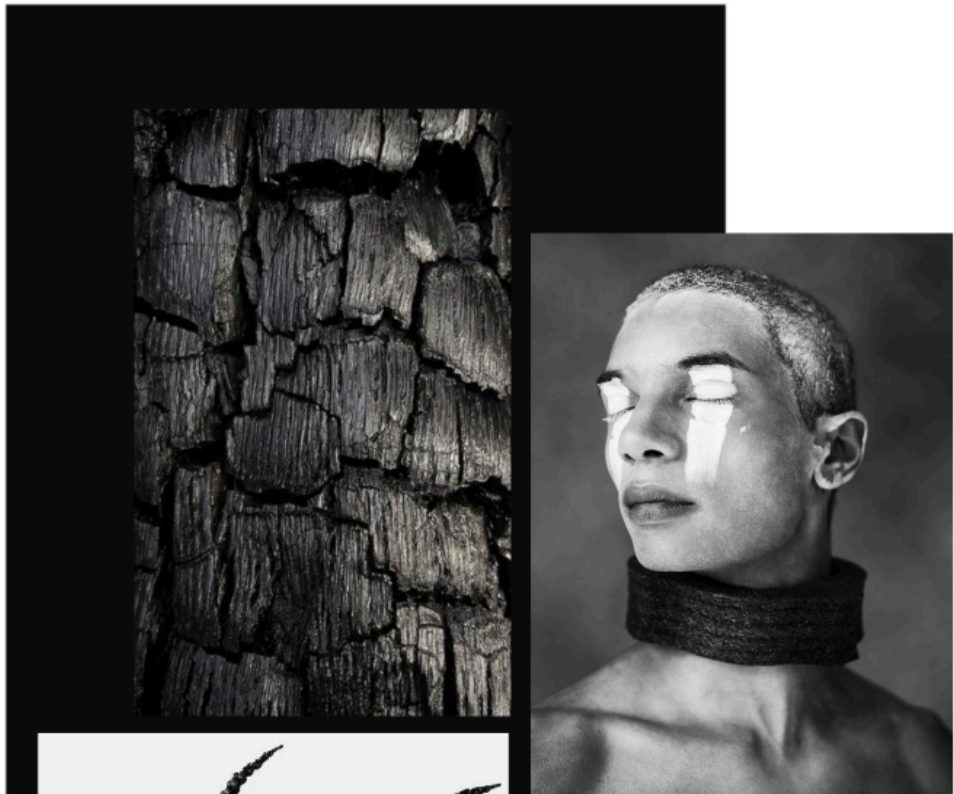
hidden zip inside
(gunmetal finish)

ankle boot in "New Zealand" lambskin with a lightweight micro sole. Internal zip fastening, and leather braided rope.



variants: "New Zealand" lambskin in Nude / "New Zealand" lambskin in Avion / full-grain calf leather ankle boot with a lightweight micro sole. Internal zip fastening, and leather braided rope.

zip puller gunmetal finish



44

lightweight
micro sole



leather loop

leather braided rope



small metal steel detail at
the end of the rope

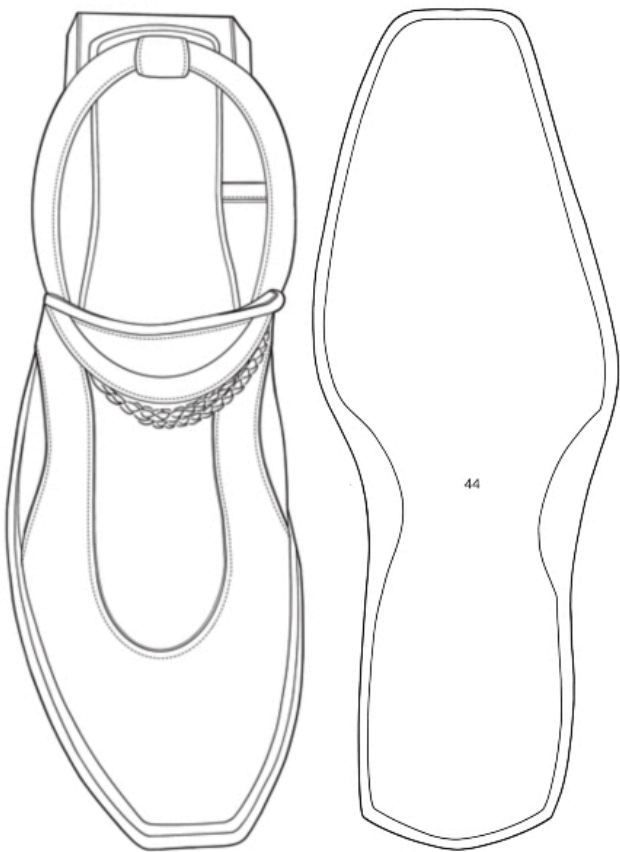
bottom upper part stiff leather



hidden zip inside
(gunmetal finish)



zip puller gunmetal finish



leather loop

leather braided rope



small metal steel detail at the end of the rope

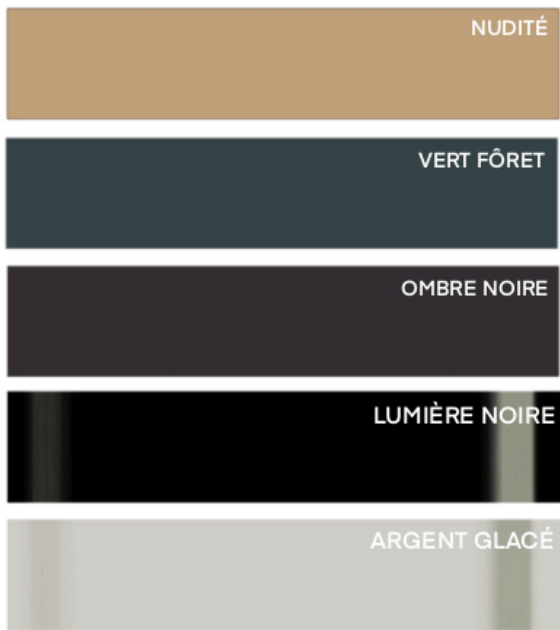
bottom upper part stiff leather



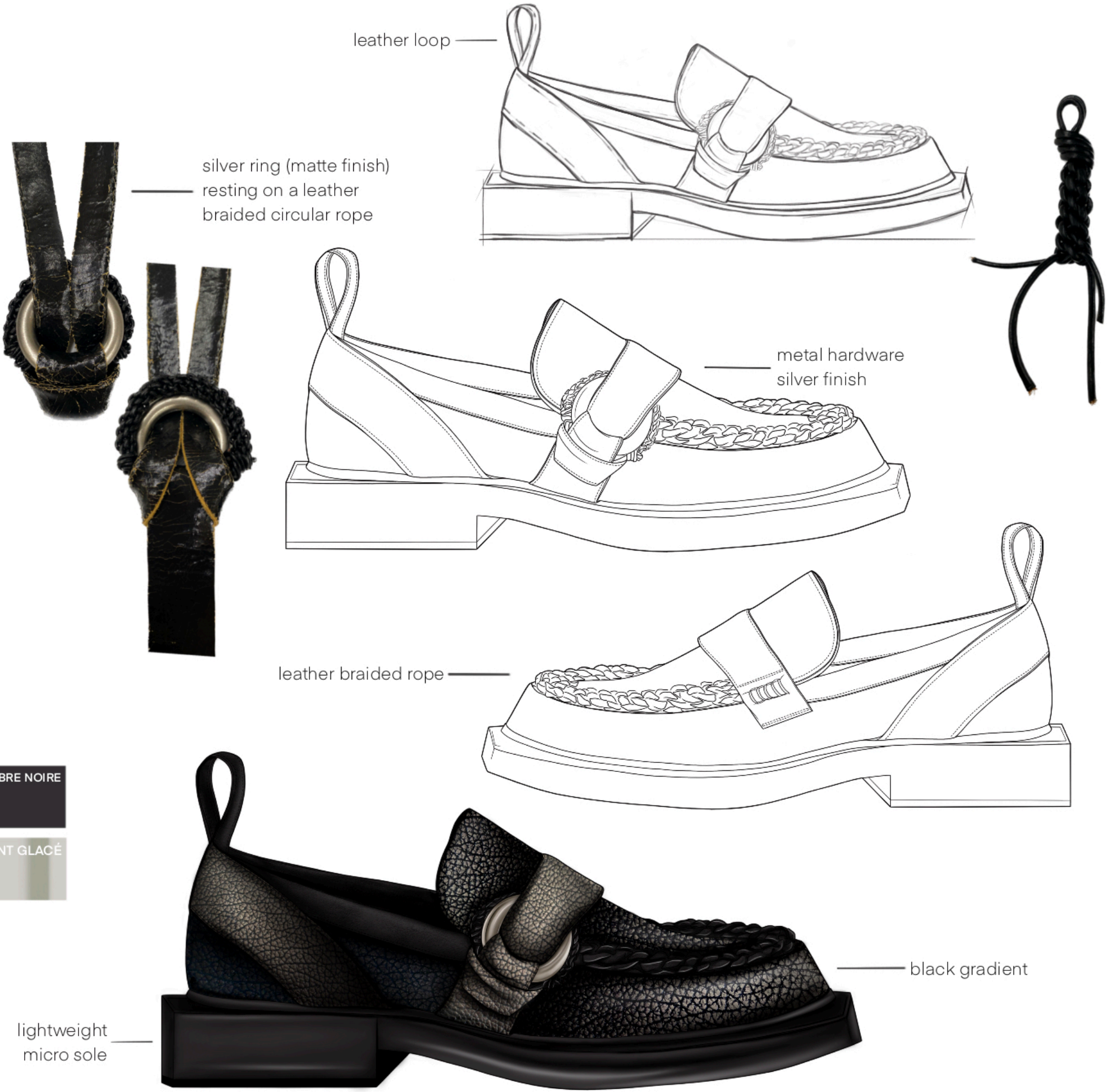
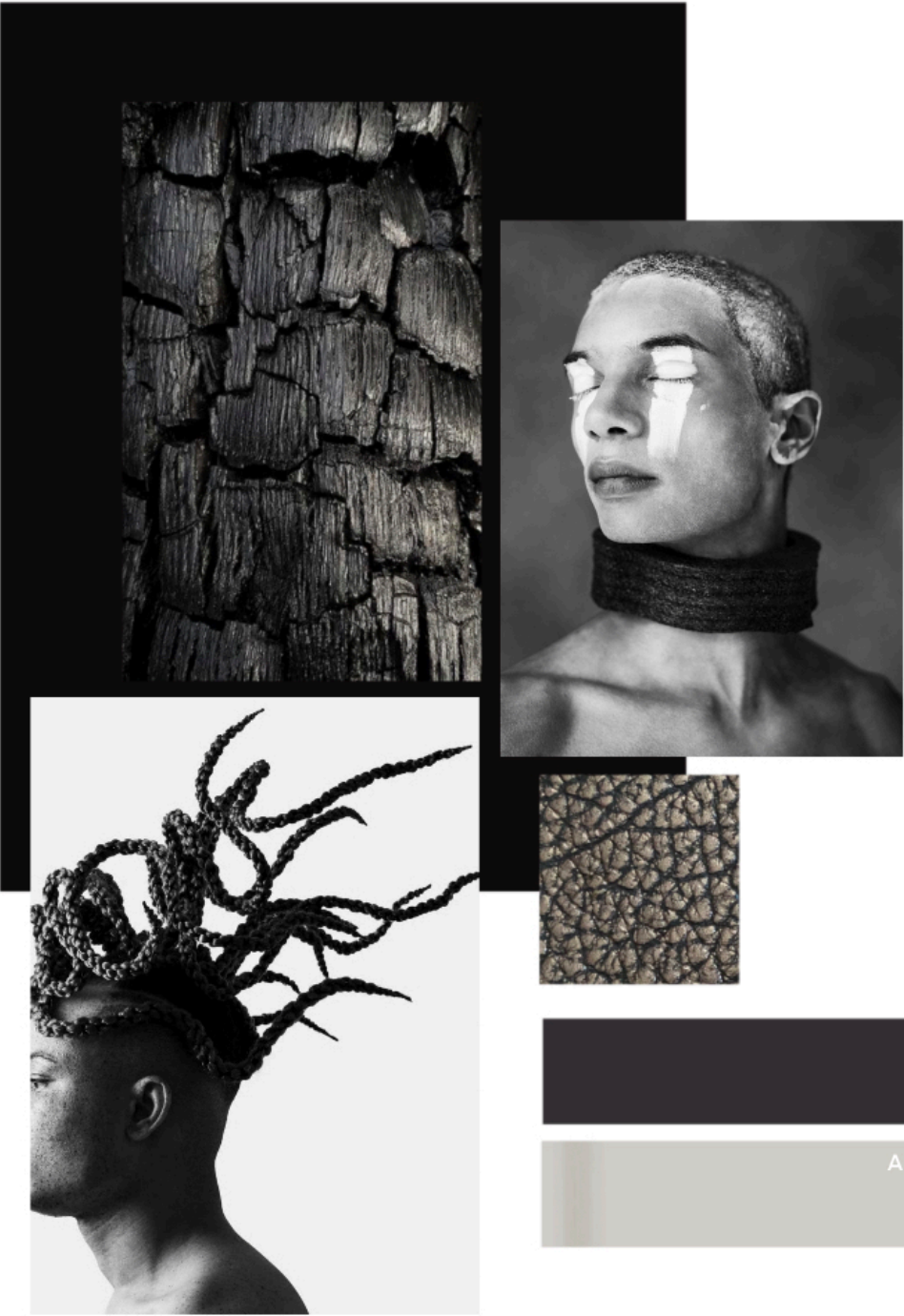
lightweight micro sole



hidden zip inside (gunmetal finish)



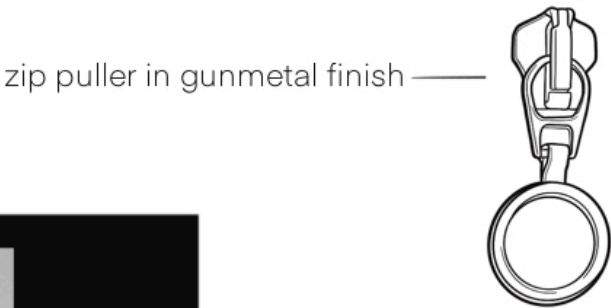
variants: "New Zealand" lambskin / full-grain pebbled calf leather / metallic-grain calfskin ankle boot with a lightweight micro sole. Internal zip fastening, and leather braided rope.



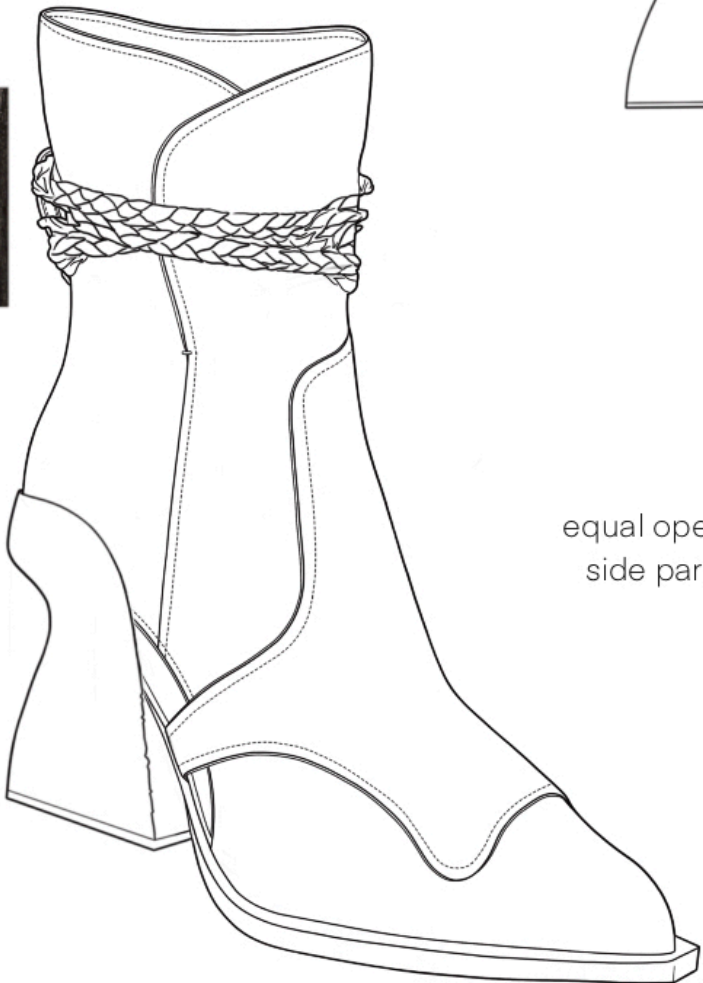
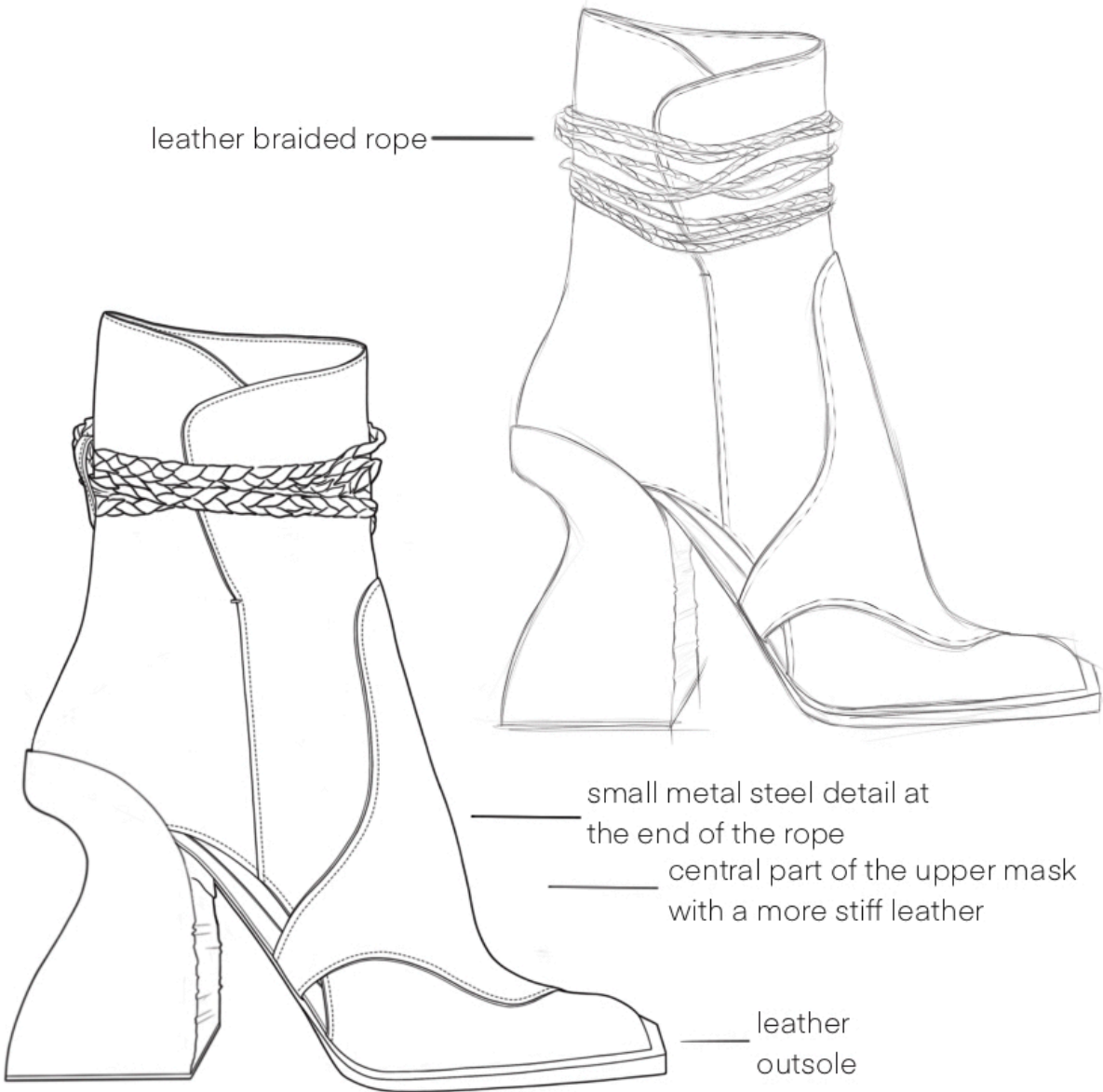
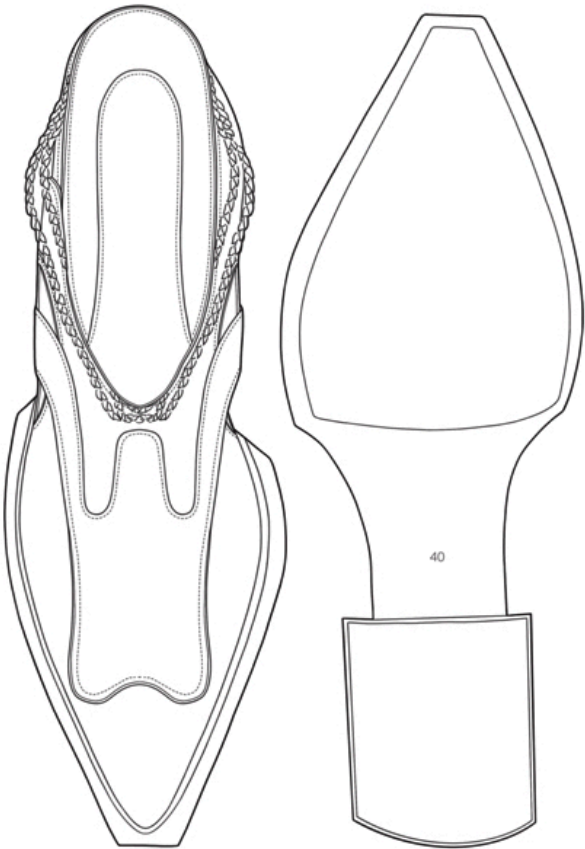
loafer in metallic-grain calfskin with a lightweight micro sole. leather braided detail on the apron.



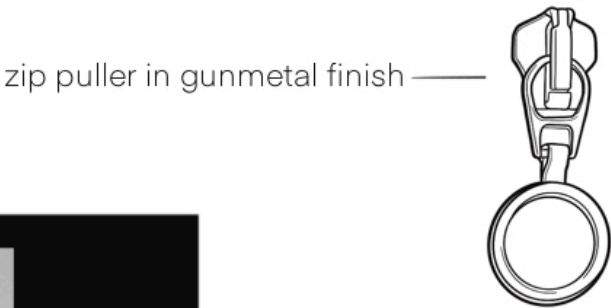
variants: "New Zealand" lambskin / full-grain pebbled calf leather / metallic-grain calfskin in Avion loafer with a lightweight micro sole. leather braided detail on the apron.



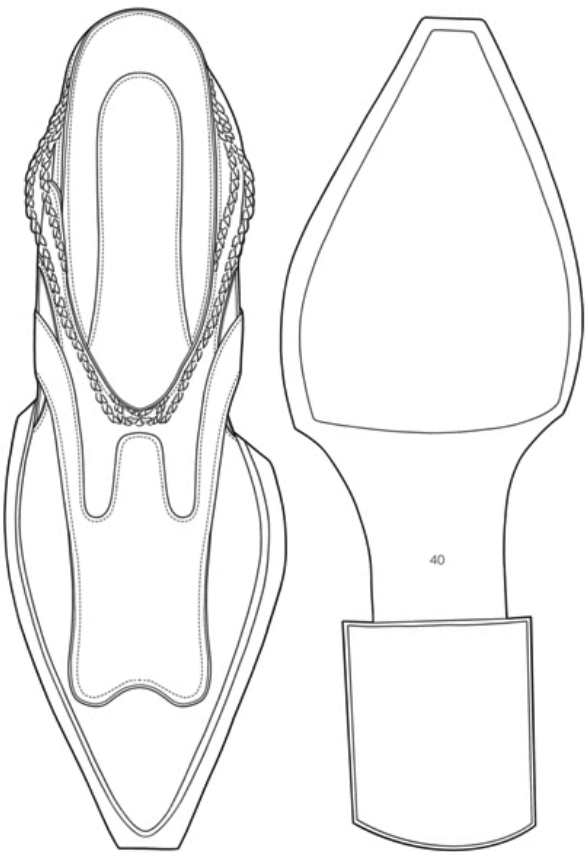
heel in varnished beechwood. the internal part has a "raw finish"



heel height: 6 cm heel "hollow crown" height: 2 cm
ankle boot in "New Zealand" lambskin featuring a smooth calfskin apron and wooden heel. Internal zip and leather braided rope.



heel in varnished beechwood. the internal part has a "raw finish"



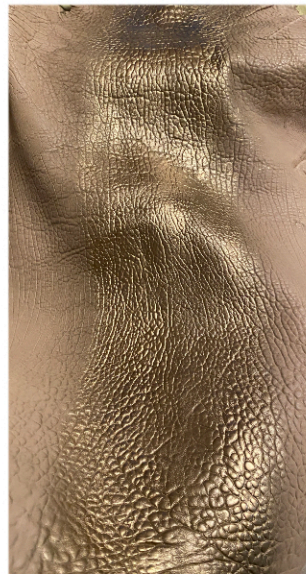
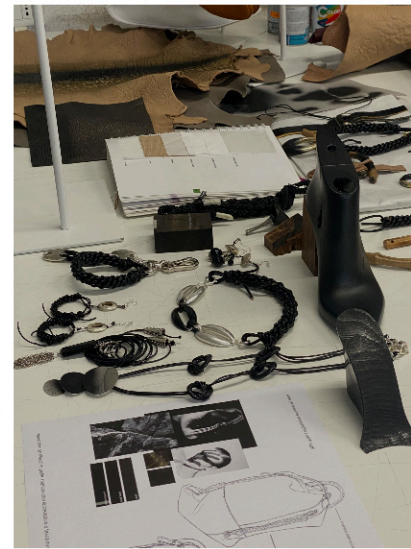
heel height: 6 cm heel "hollow crown" height: 2 cm
variants: "New Zealand" lambskin in Nude / "New Zealand" lambskin in Avion / metallic-grain calfskin
ankle boot with a smooth calfskin apron and wooden heel. Internal zip and leather braided rope.











Experimentation with **shading effects**
on New Zealand lambskin and
creation of **handmade jewellery**
integrated with braiding techniques.



Visuals from the preview presentation and backstage of the runway show held at Accademia Costume e Moda in Rome on **12 April 2025**.



Visuals from the runway show held at Accademia Costume e Moda in Rome on **12 April 2025**.