

LUCA DIGIACOMANTONIO

GALLERIA CAPOVOLTA

HAUTE COUTURE COLLECTION

Art has historically and culturally founded its status of autonomy and freedom by overcoming and exploring its limits and always pushing its own language a little "further", even using the body itself as a "support" and as a field of investigation.

Galleria Capovolta is a collection that spans art, fashion and unique personalities who have turned their living and social conditions into art. A personal gallery of life stories and strong characters that have changed the perception of a stereotyped "normality" that becomes a subjectively objective reality.

The Collection comes to life from questions asked of me, from memories and from my life and family history.

Art as a reflection of the self and vehicle of an aesthetic, fashion as a passion and obsession, two elements that have always accompanied me on my life path.

The research develops starting from the relationship between **Art and Fashion** and how art has been a fundamental vehicle for expressing realities, strong personalities and Normalities often considered universal but which in reality are extremely unique and subjective. The art of the 1920s with **Lili Elbe**, the first transgender woman in history, and **Cecil Beaton**, who with **Stephen Tennant** created a unique aesthetic of its kind, the years of neorealism in **Rome** and the Dolce Vita, seen through the eyes of **Giò Stajano** and **Renato Guttuso**, the strong personalities of **Lisetta Carmi**, **April Ashley** and **Mina** are the fulcrum of the project.

Polyglot artists, attentive to the influences of their eras and pioneers of "revolutions" in the artistic, photographic and fashion fields. Souls who, with their character and their extremely strong personality, have created something unique and wonderful. People who have always looked ahead while maintaining a fixed point on what were their passions, inclinations and activities.

A "personal gallery" of life stories and strong characters who have transformed the perception of "normality" challenges the rigid and often restrictive boundaries imposed by society. These individuals have broken the mold, rejected labels, and redefined what it means to be authentic, creating a reality in which subjectivity becomes objective through their determination. Each story is a trace of courage and self-affirmation, in which the self is not adapted to existing standards, but imposes its existence in an unmistakable way.

The collection wants to represent precisely this: an extremely free and courageous person who pursues his dream and makes it a lifestyle, a person who asserts himself for who he is.

Research nourishes the Collection with embroidery, workmanship, studies of shape and color and ensures that every topic studied has a transposition into the creation of the garments.

Precious fabrics, refinement, luxury and uniqueness are the cornerstones of the entire project.

GALLERIA CAPOVOLTA



LUCA DIGIACOMANTONIO



FRA I COLORI DEL SUD
(Sopra , un quadro di Giò Staiano.)



GRAFISMO, SEGNO 1970,
CONTRASTO.

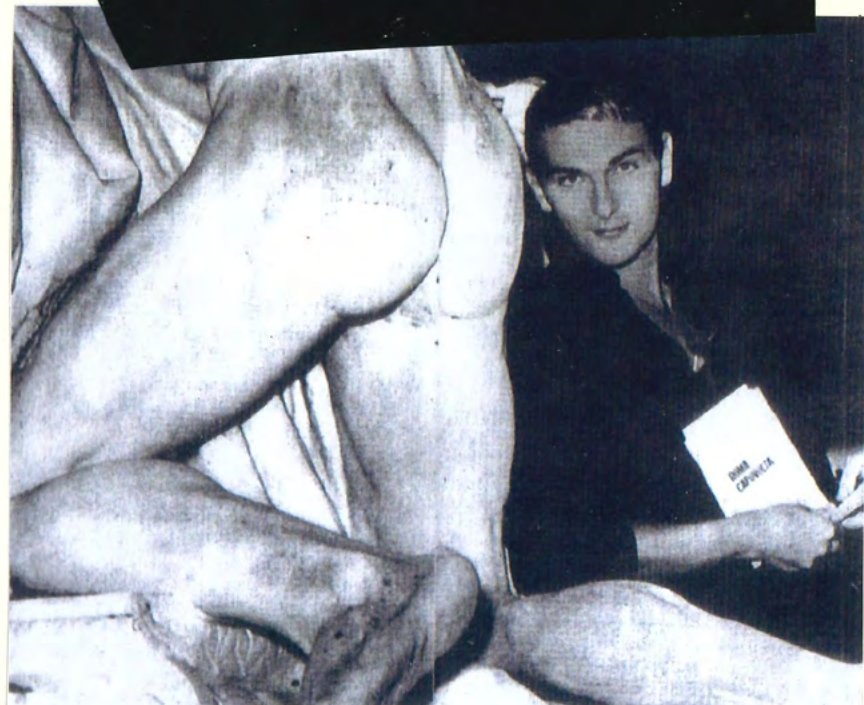
LA DOLCE VITA A ROMA

TO
SECRET
NOBLE
PARADISE





Con Novella Parigini e la sua modella Marilù Saint-George nella fontana della Barcaccia in piazza di Spagna, durante il "bagno" che ispirò a Fellini la scena più celebre de *La dolce vita*, Roma 1959.



Roma, Villa Borghese, monumento a Goethe, in occasione dell'uscita di *Roma capovolta*, nel 1959.

Giovanni Ciacci

LA CONTESSA

La scandalosa vita di
Giò Stajano



Con una postfazione di Willy Vaira



RICAMO "SOSPESO"
 ROVERE BOVIBUS
 CROSTICATA SETA
 CON METALLO E
 DETTAGLIO CATERA
 SU TOP.

LA "CONTESSA"
GIO STASSANO

CIRCU
BEATON



RICHARD
GUSTAV
GIBBY
EFFETTO
SONDRA

TRANS
WATER
20'S



↓
DETAGLI
LITENACI



APRIL
ASHLEY
60'S

↓
APPLICAZIONE
TESSUTO RUSSO
EFFETTO
VENTAGLIO.

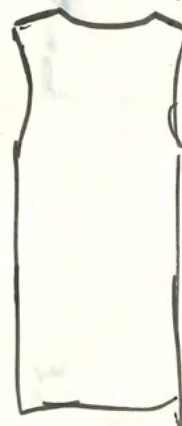
↓
MOOD
40'S



JACQUARD e ERRORE
MILANO.

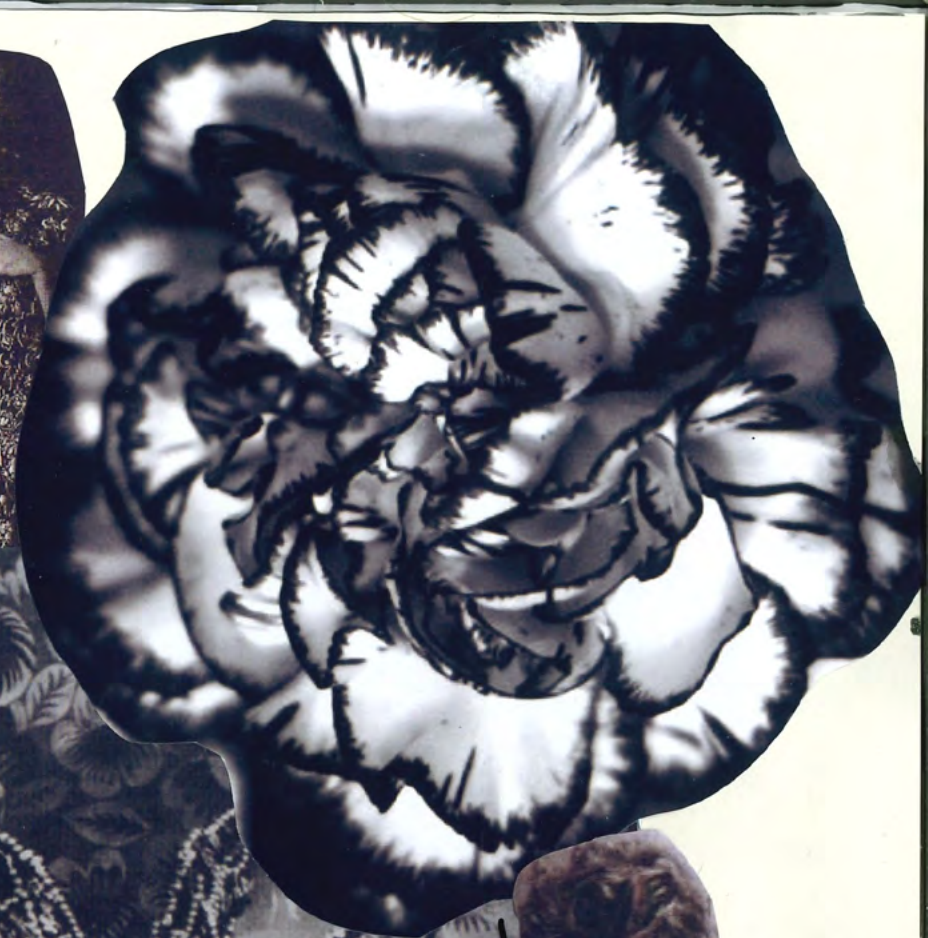


4
CSCU
BEATON
←

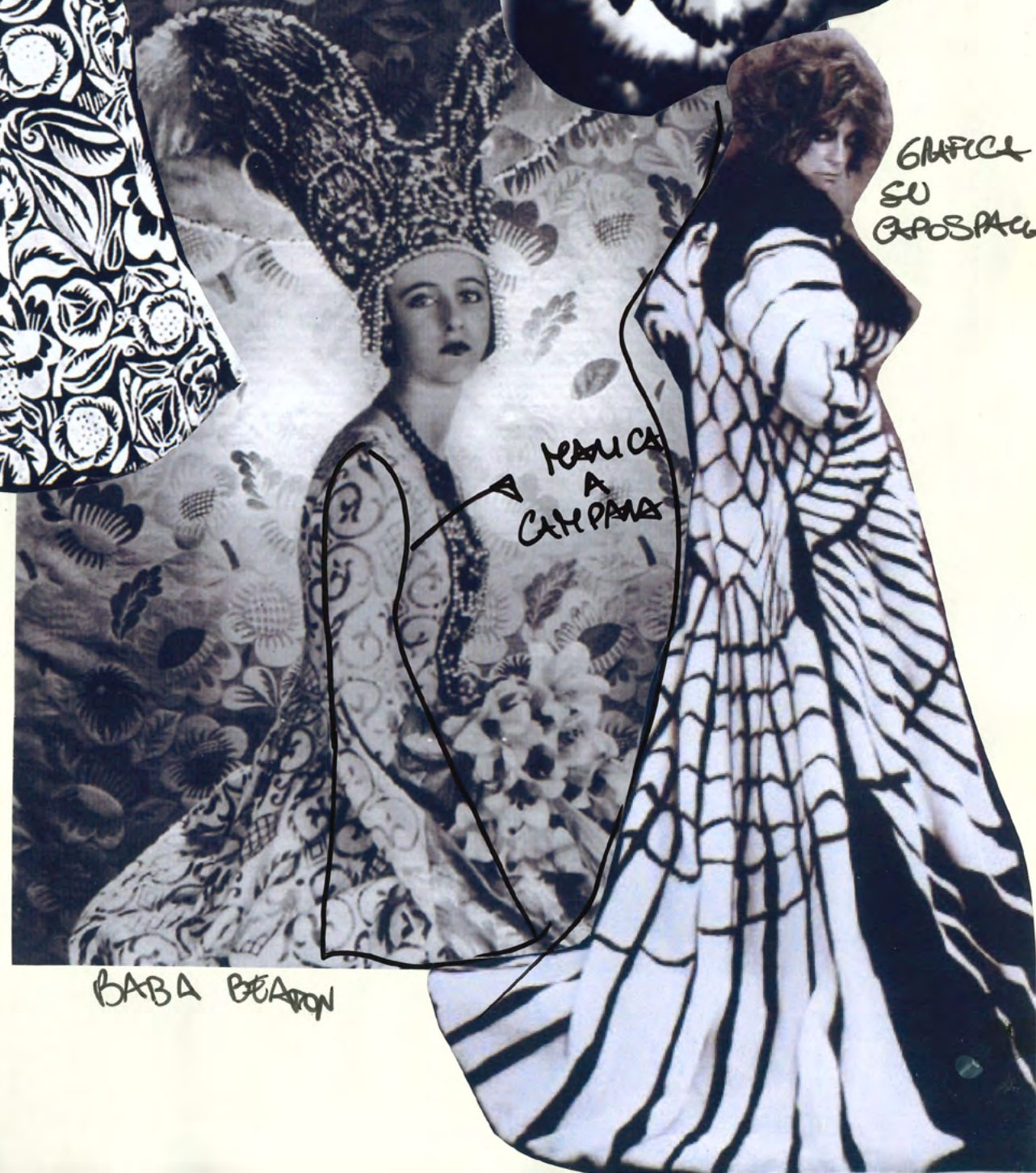


TOP
A "TRAP"
RICAMATO
SU
UOMO

SCOLATURA
CON
ORTEUS
NEL
DIBITO



GRAFICA
SU
CROSPACCA

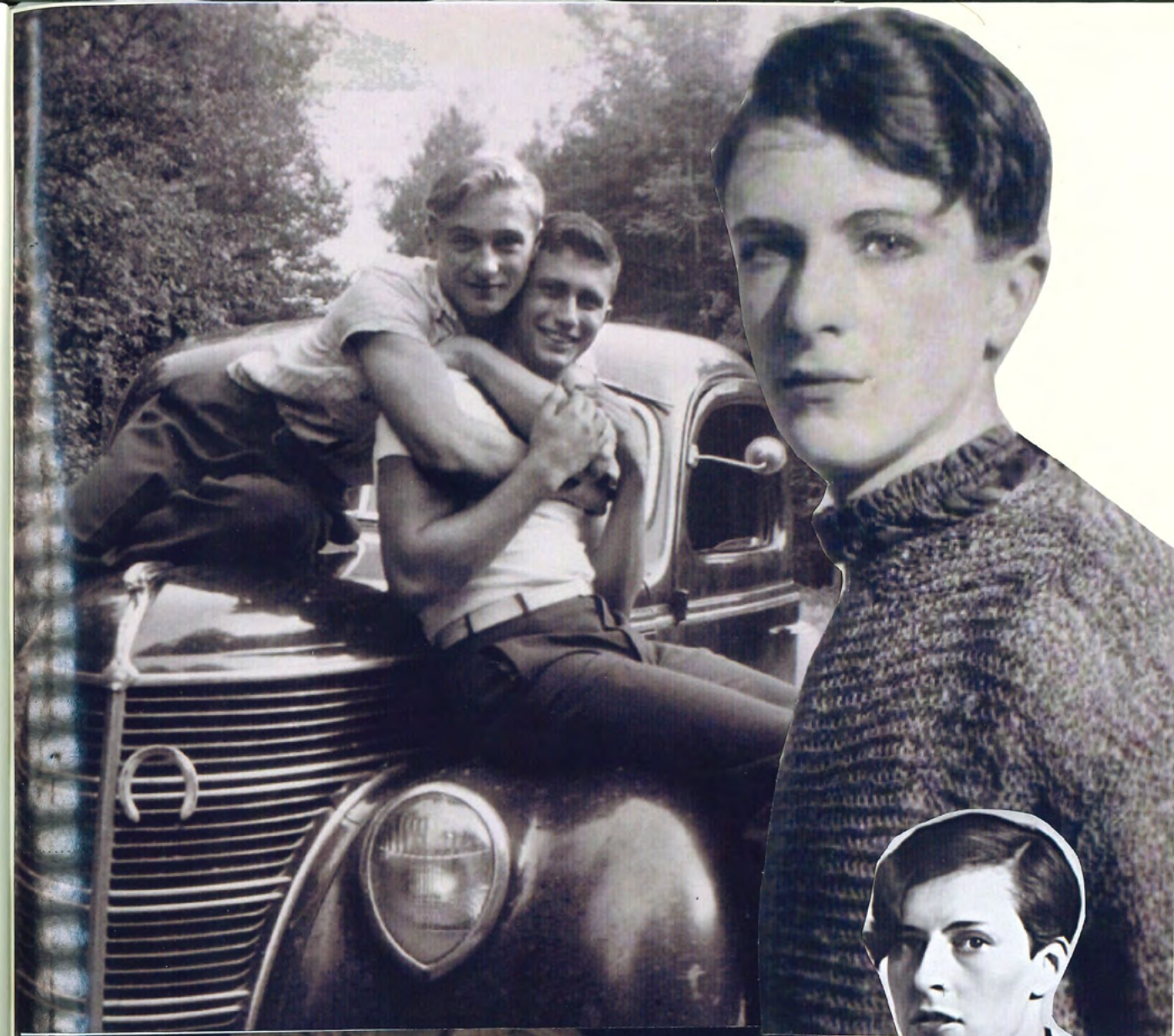


MANICA
A
CAMPANA

BABA BEATON









LOOK
COMPLETO.

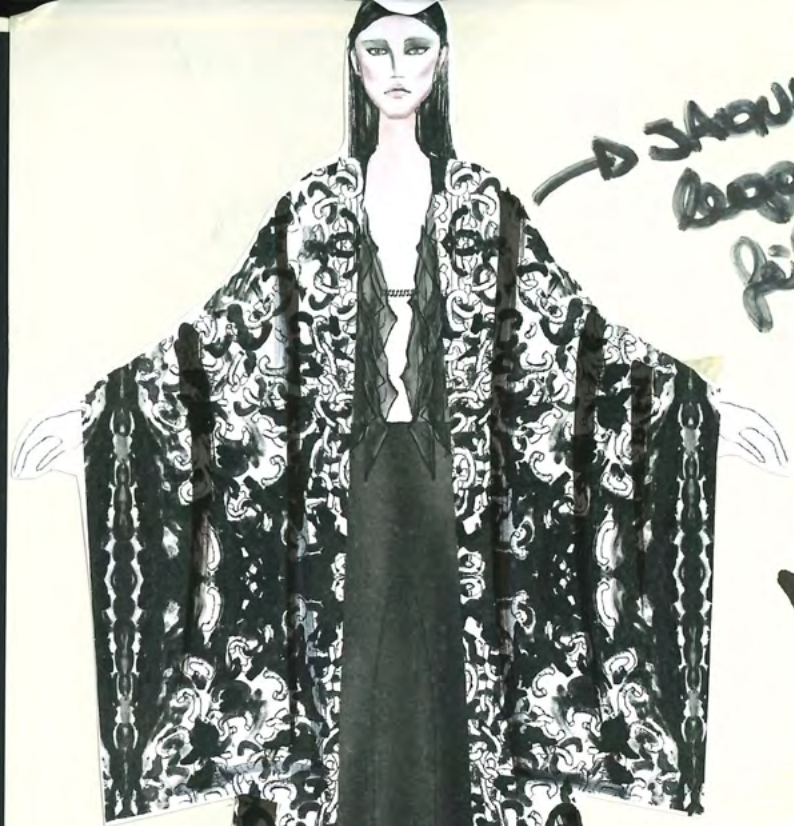


VESTAGLIA

CHE DIVENTA
CAPPOTTO, ABITO,
CAMICIA UNICA.

MANTILLA e
EFFETTO
CAPPA.

PIAGINE
sulla
scollatura



→ JACQUARD
Bogge
fil come
avulato l'oro

VESTAGLIA / HERON



→ COLO CON PIEGHE



→ GRAFISTICO B/W

→ PECUCCIA.
WTA/SIA.



ANCHE
FORMA NOTRO
SOSPESA

Base pelle
+ inserti pelle
in rilievo.
"AZZATI" CON
CAVETTO

→ TIPO PUNTO
ASCIUTTO
26 27 28
0 MONTA -



→ FIORE pelle
→ CAVETTO

DIPINTO
A TACCA



CHIAVE STAMPATO A QUADRO



PROPRIETÀ CLAUDIO
DANESI

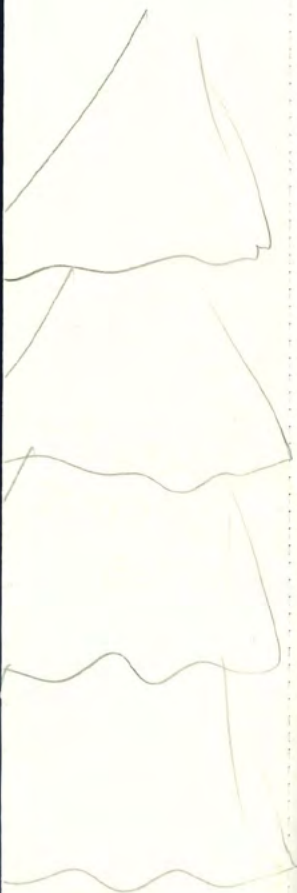


RENATO GUTTUSO

(s.t.), 1965; chine su carta, cm 35 x 58 49.5 x 69.5

Conse Federico G. G. G. G.
Per l'arte tipografica

E. G. G. G.

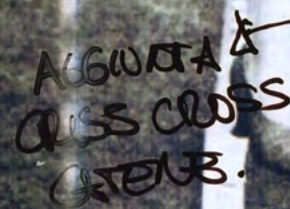


A fashion sketch of a woman with dark hair and bangs. She is wearing a white long-sleeved top with a black asymmetrical collar and a black skirt with a large, dark, ruffled or layered texture. The sketch is signed 'S. B.' in the top left corner.

↓
OPHOLUS
PHTHALOLUS
PHTHALOLUS
PHTHALOLUS
PHTHALOLUS

✓
Gronzike
Gronz.

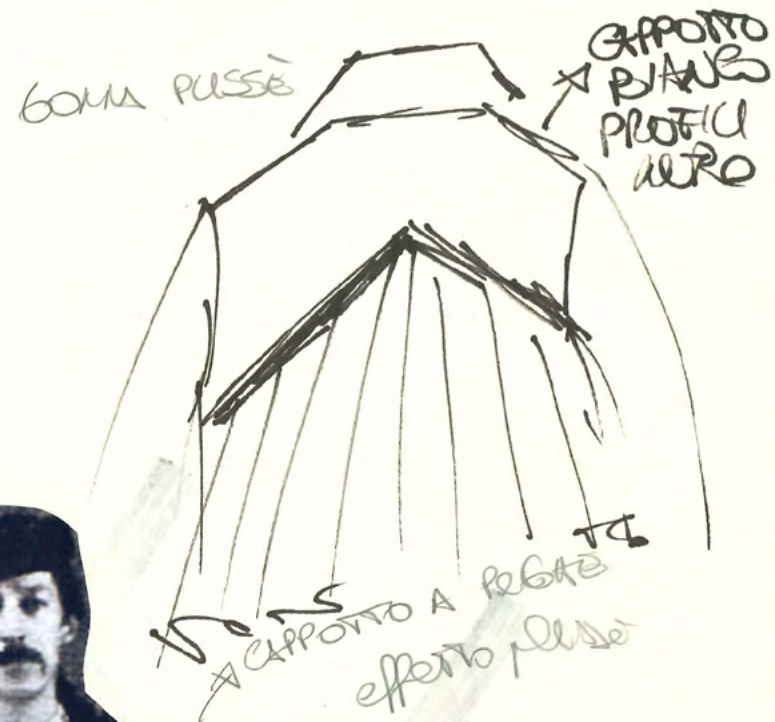
QUANTITATIVE &
QUALITATIVE

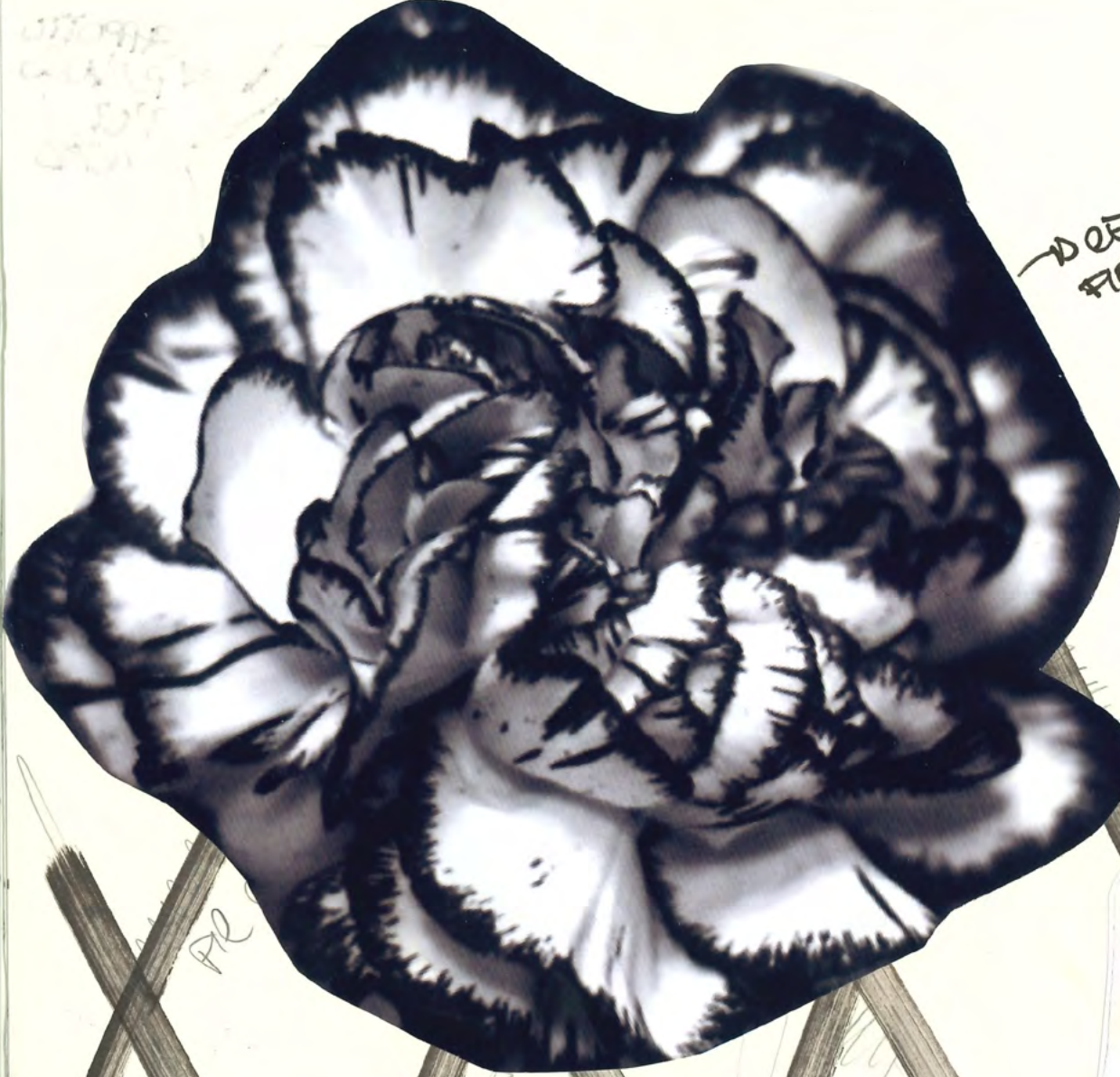


PIEGARE E
ANCHE
SU
CROSPALLO

PIEZA ALTERNAS

PIED
CHIFFON +
TEX + RESM

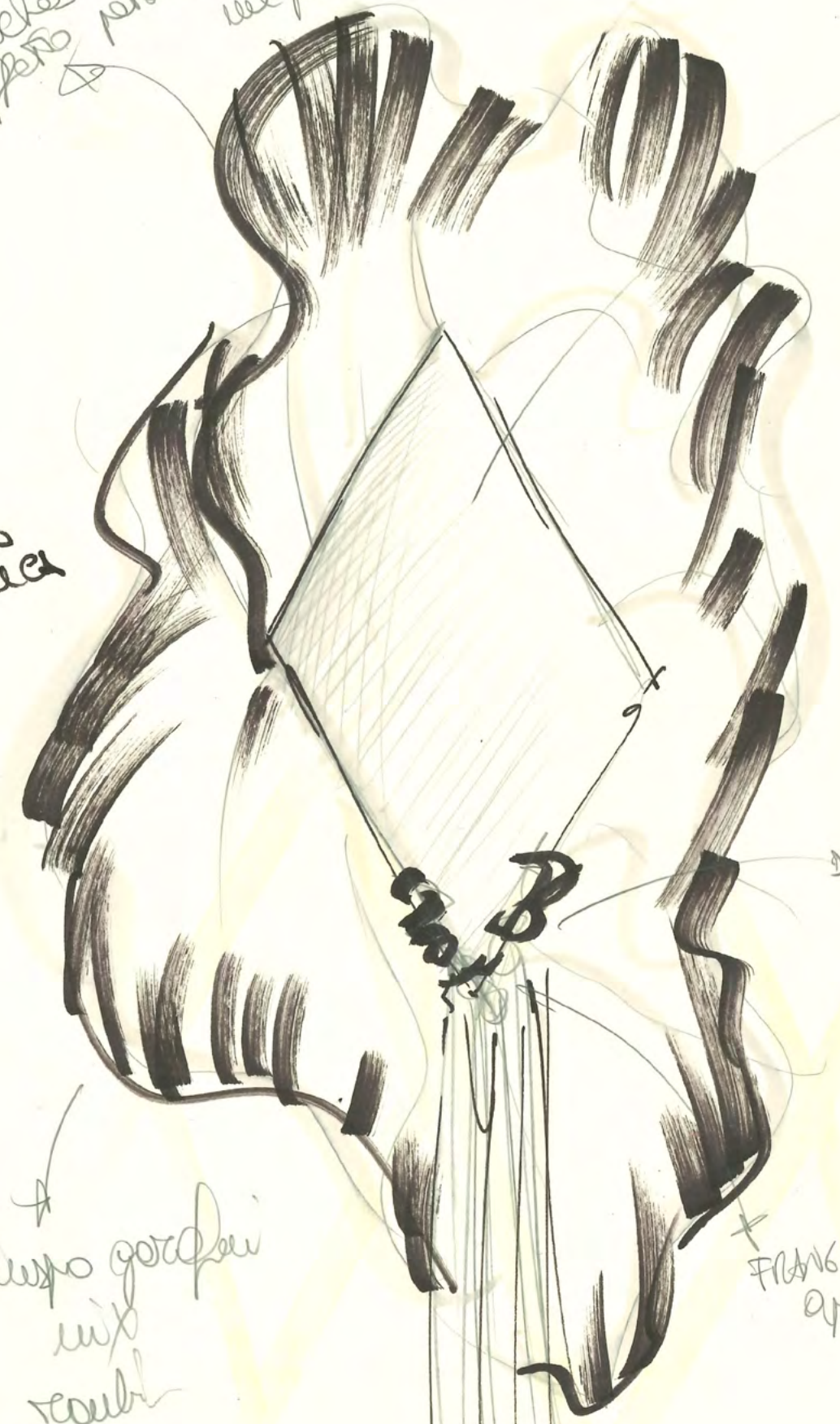




DETTAGLIO
FIORIS



lavori bianchi
effetti
petali
dipinti
nel fiore
fioris



Tulle
bianco
uso
infuso
per
corpo

RICHIAMI
SU TONCI

di pietra

A
lavoro grafico
mix
tutti

+ FRANGIA
aperta

PREGAB INDOLENTI



TONCA
KALUCA
E SODUCATURA

YESTICA

*Souvenir de bon temps
de la chambre
Mitzel & Co. elles
le 21 Mars
1928.*



OPKONB SU
CLAPOTTO



ALLUCIATORA

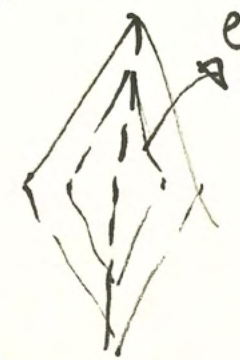
SU GANCIA 2
SU CLAPOTTO
+ GIACCA

TABCO
SU
GIACCA

Carrozzina
raube
a pagine

GRONAZIONE
NONBI A "PAGAB"

EXCORTO
ENTROLE





CATENE CHE
DETERMINANO
FRANGIA

→ MONDO FRANGIA e
COTONE



→ TOP. CON
CATENE O
FRANGIA CRISTALLI



→ SAQUARD
CON FRANGIA
FRANGIA O
RICAMATO.



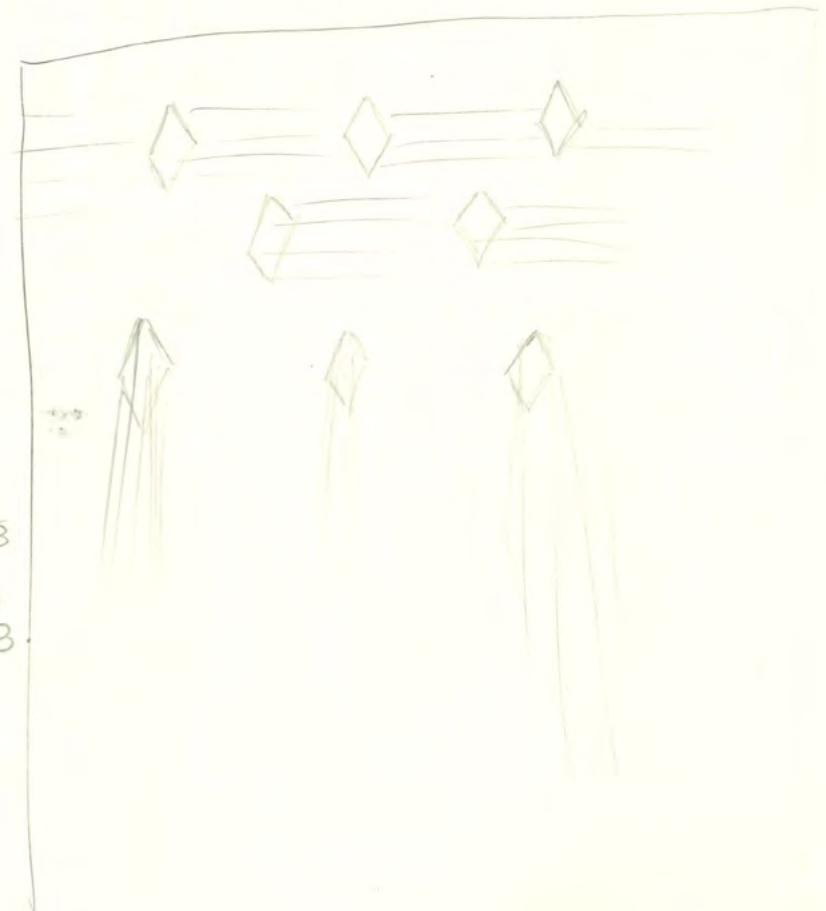
FRANGIA +
FRANGIA SAQUARD.

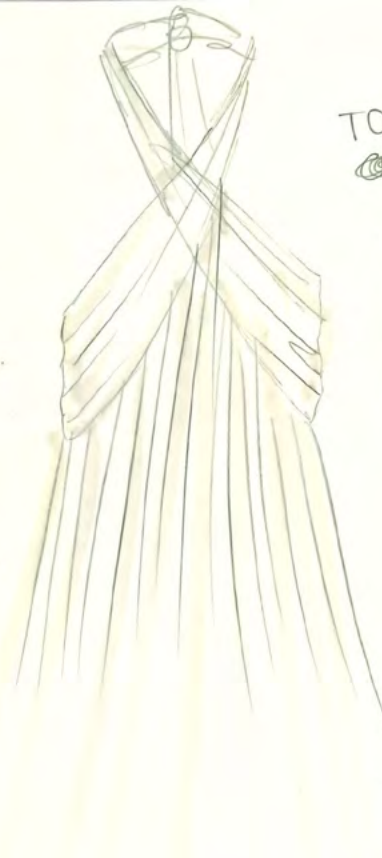
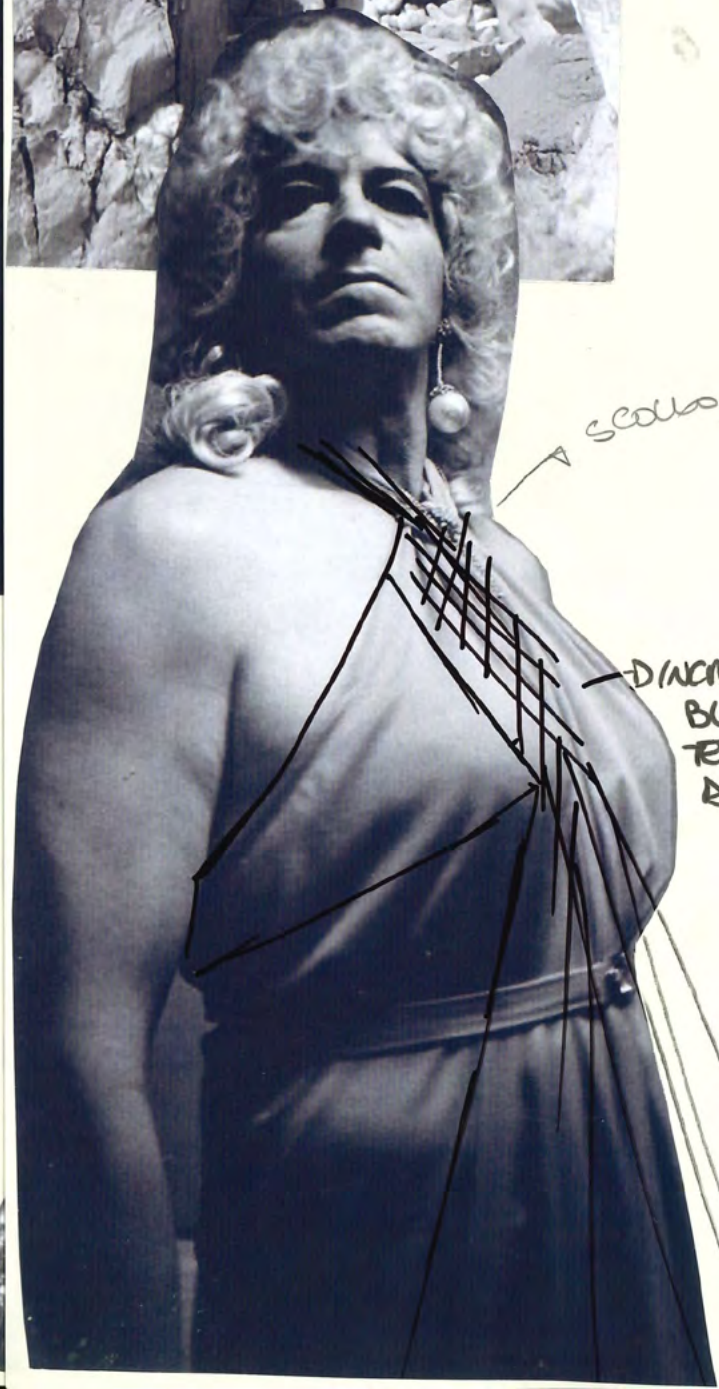
→ SAQUARD EFFETTO PELLO SOTTO LA
PELICCIA CON COLLOLETTO VISCOSA

→ FRANGIA e SAQUARD
PELO SOTTO LA.

MONDO pelliccia vera +
SAQUARD CHE CREA
EFFETTO pelliccia

SAQUARD
FIL COUPÉ
SU BASE
TRASPARENTE
IN SETA +
FIL COUPÉ
CON CATENE
CHE FANNO
COTONE LUNGO.





TOP. INCROCIATO

MODELLO SETA MUSA



O MOLTO X
BUTTERO
DUBBI



INCROCIO
BUTTERO TESSUTO.

ANCHE SU
CINTURA X
LARGO

FRANCA BUTTERO
TESSUTO.

SCOLLO

INCROCIO
BUTTERO
TESSUTO SUL
BRACCIO.



CHIE
STAMPATO
A QUADRO
NELLO FULM



TOP INCROCIATO
CON FILLO

↓
LUNGA
ANCHE NELLA
DOLCE.

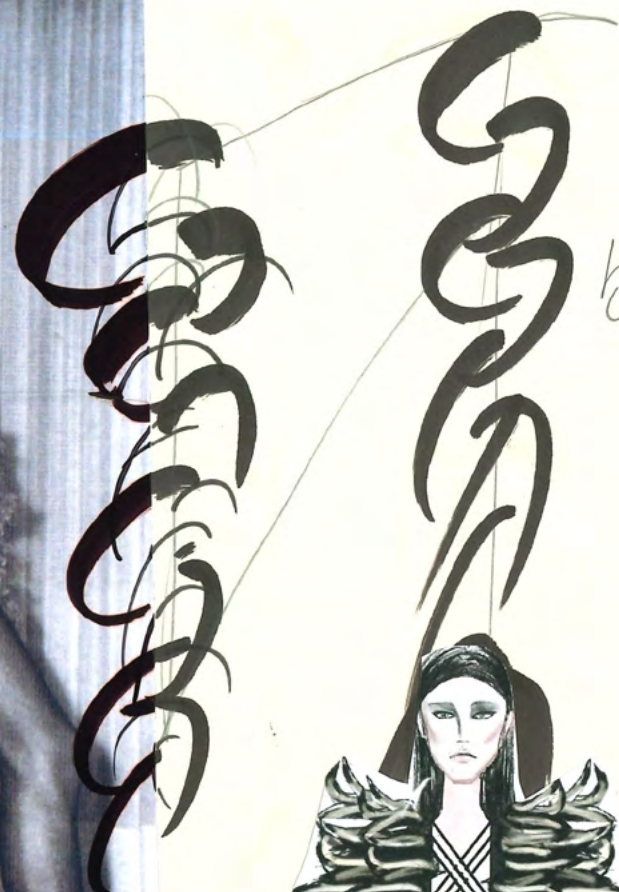
INCROCIO MOLTO
DOBLE "SOSPESO"
"MARSIA"





Il duo Flon-Flons in scena, a Roma, negli anni Sessanta (da sinistra Nefertiti e Giò).

PIUMA DE TESSUTO.



WITTO
CASSO.



EFFETTO PIUMA
CON FASCE SBIECO
GAZAR STILANBATE

TOTO
TESSUTO
GOMILI
CON CATTION
STRANIERO.



leggero
di ballo

scollato
die..



PESTATO
DI
GAZAR
11/12/1970



PIUMA
COSTRUITA

EFFETTO "PIUMA"
MONTATO 6/12/1970
SU CAROSPELLI
E ABITO.

GAZAR e
Pelle

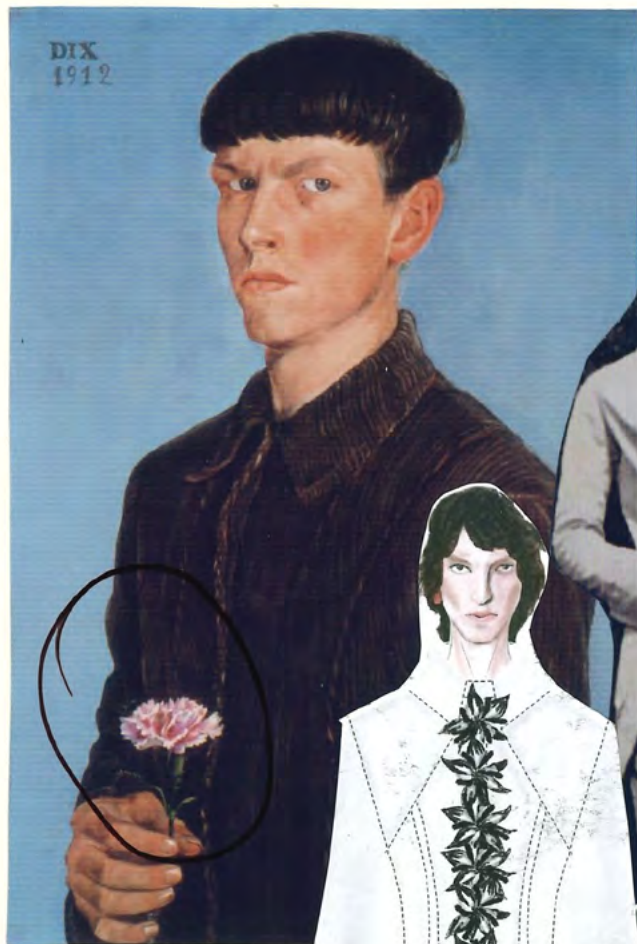
CON FETTUCCIA
PESCE
APPLICATA
SUIA FONDA



LAONAZIONE ROMBO/ROCCAS
SU CAPPOTTO e
TESSUTO +
leggero.

RIPIRESA ANCHE DAI GAROFANO.

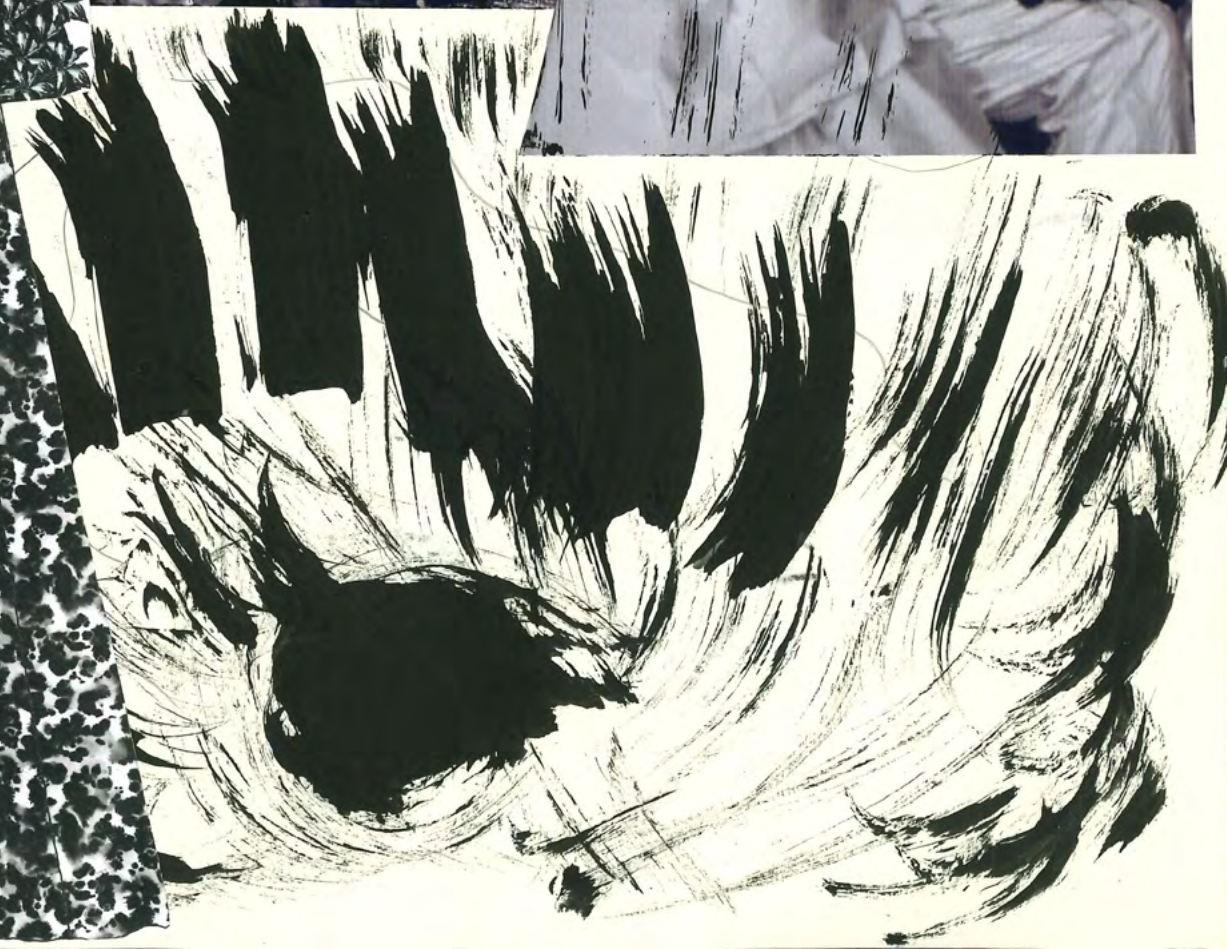
GAROFANO IN PELLE
CINTATO DA ROCCAS
+
PITTURA A TEMPO STUCCO



TESSUTO
PEAN OTTO



GAROFANI



ROBBO
INTAGLIATO.
CON
FORO CENTRALE
E FRANGIA
PELLE APPICATA.

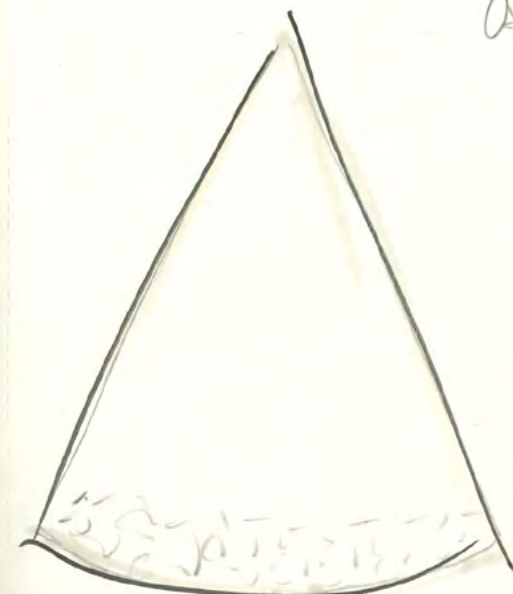


CAVORAZIONE NUOVO TRIANGOLO

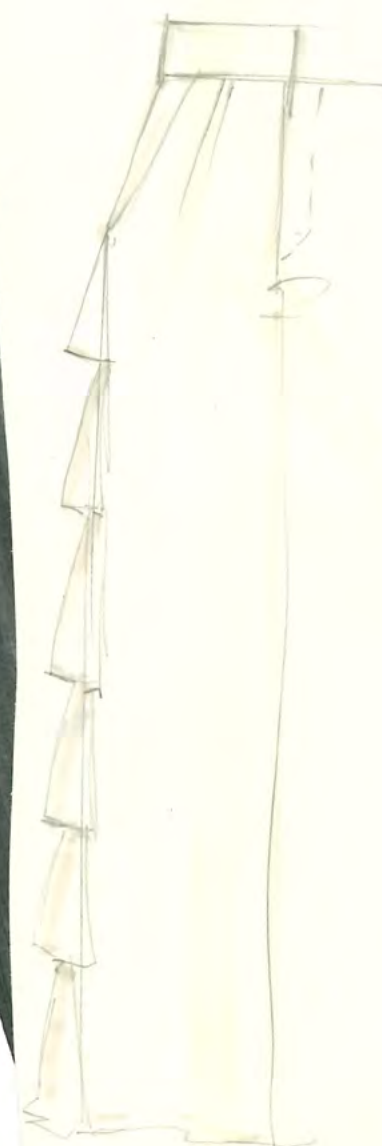
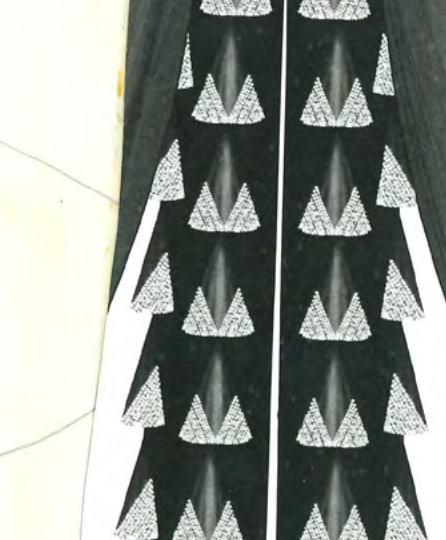
D APPICATA A TELA
SU TESSUTO

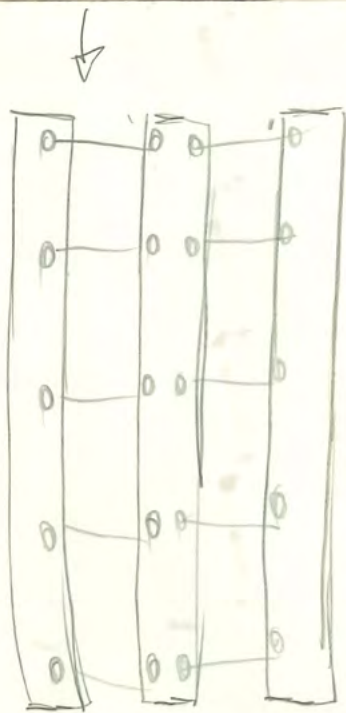
D RICHIAMO
NEL FONDO

SU CINTO PANA.

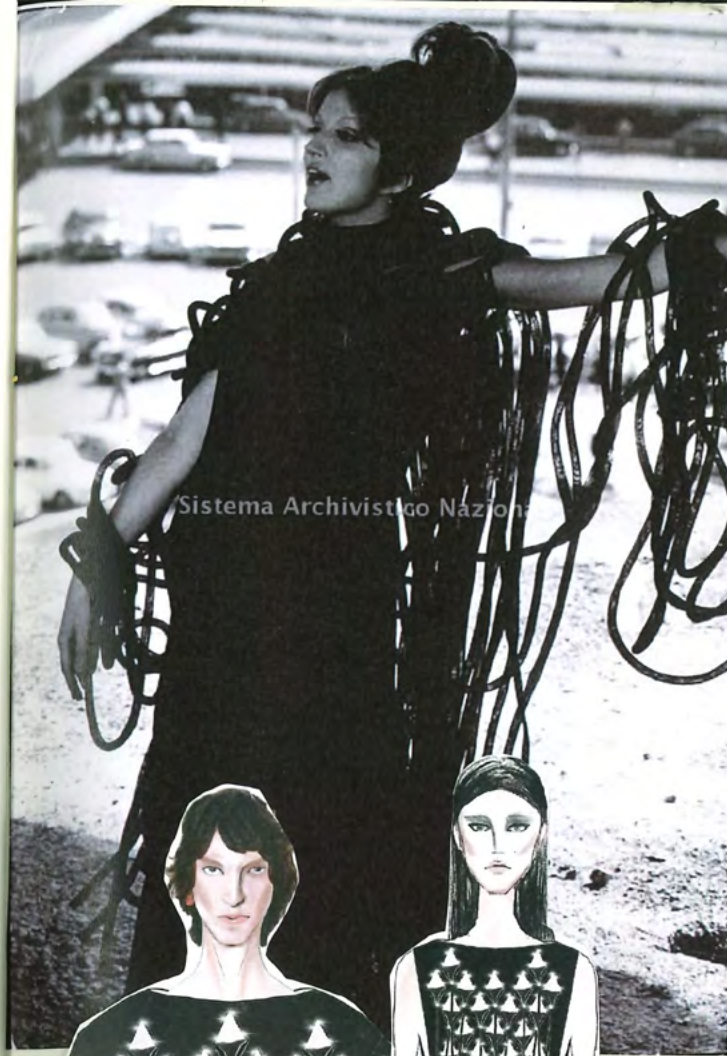


Mosell





ARUL ASACOR
Aut 60

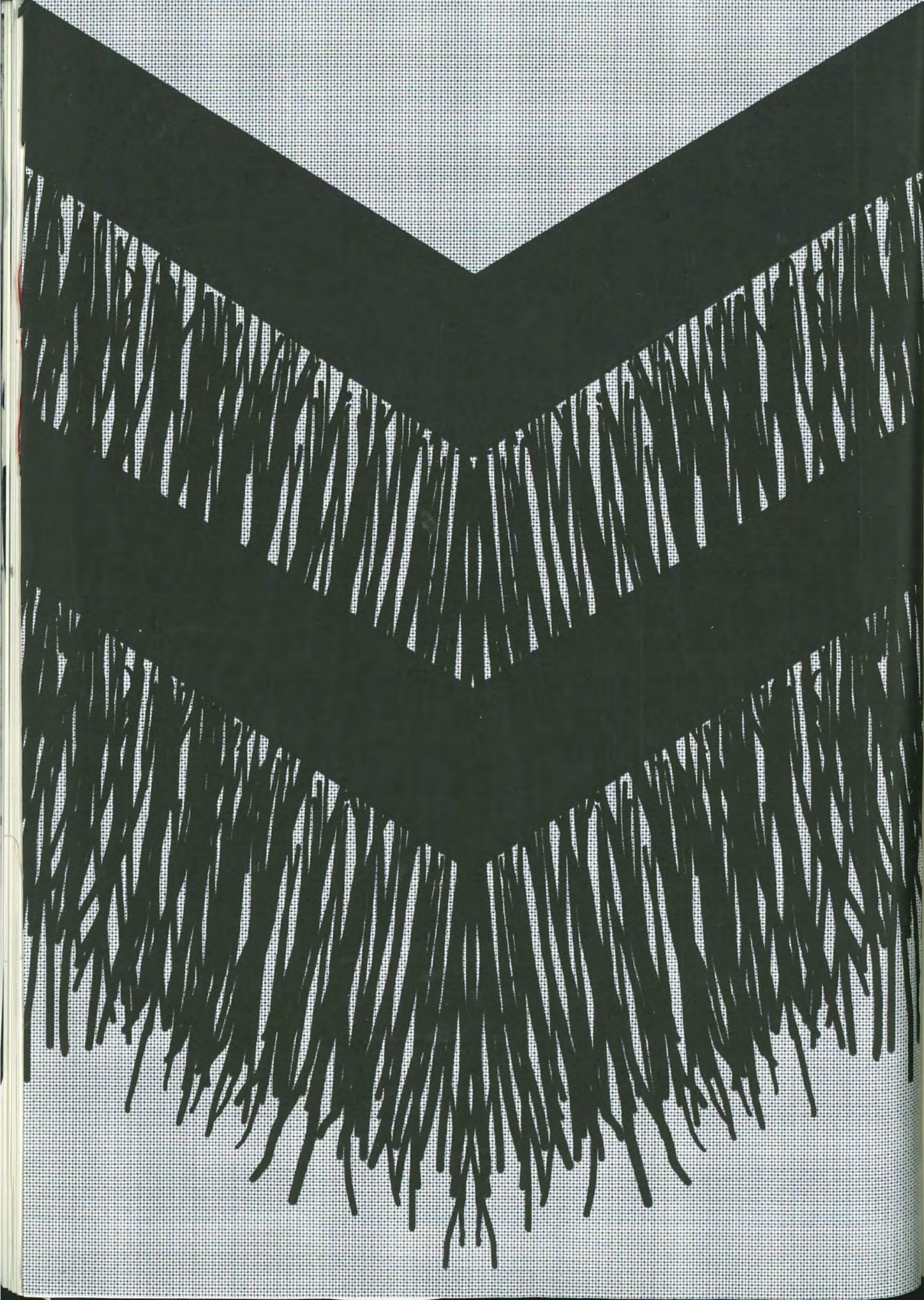


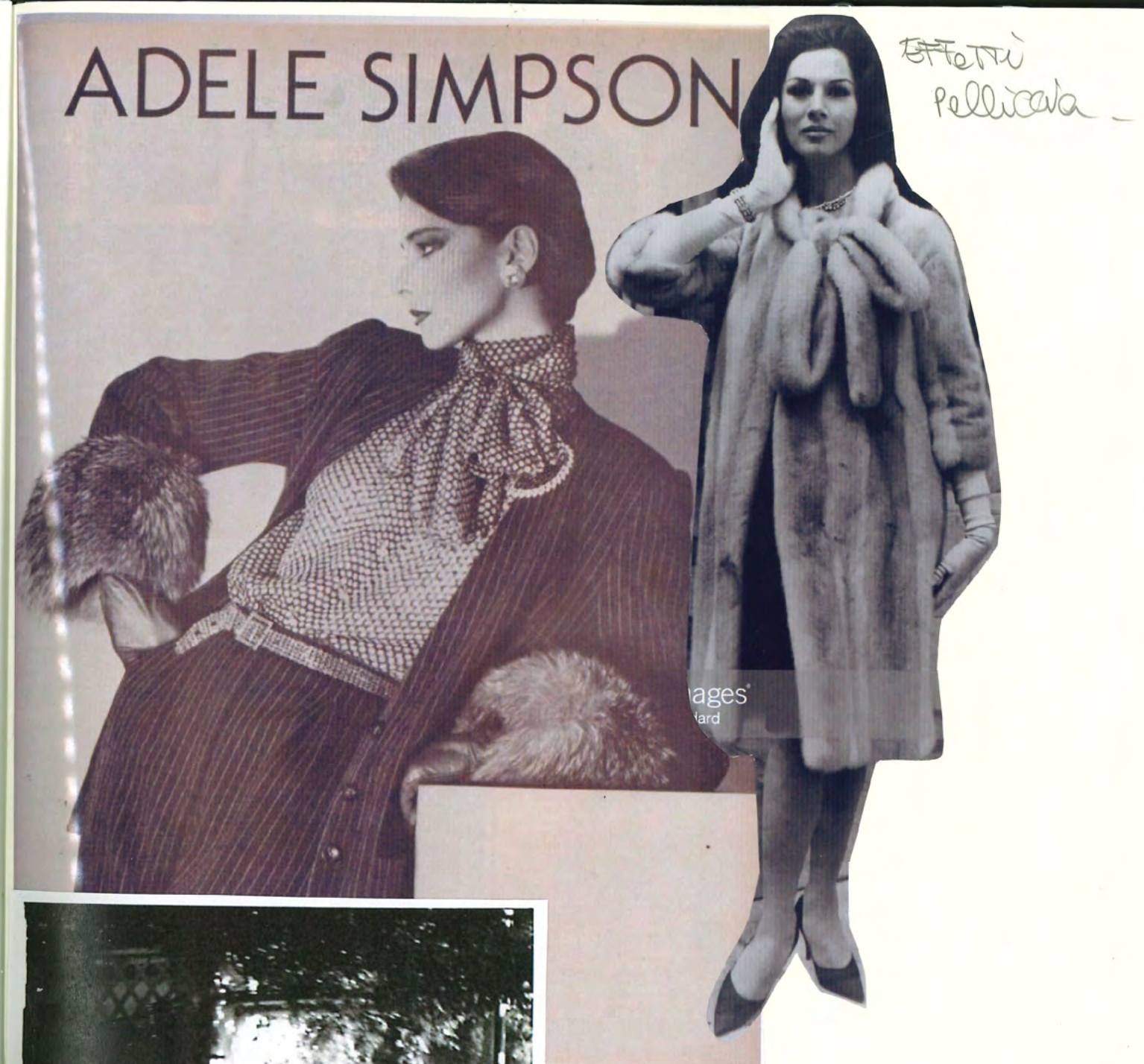
TIPO BUDZU
TBSURO
O
CATELO

DIETRO
CATELO

BOVOCOR
INSTABLO
MOTEBI E
FRANGIA









LA VALLA MODA
STILE E STAR NELLA STORIA DELLA RAI

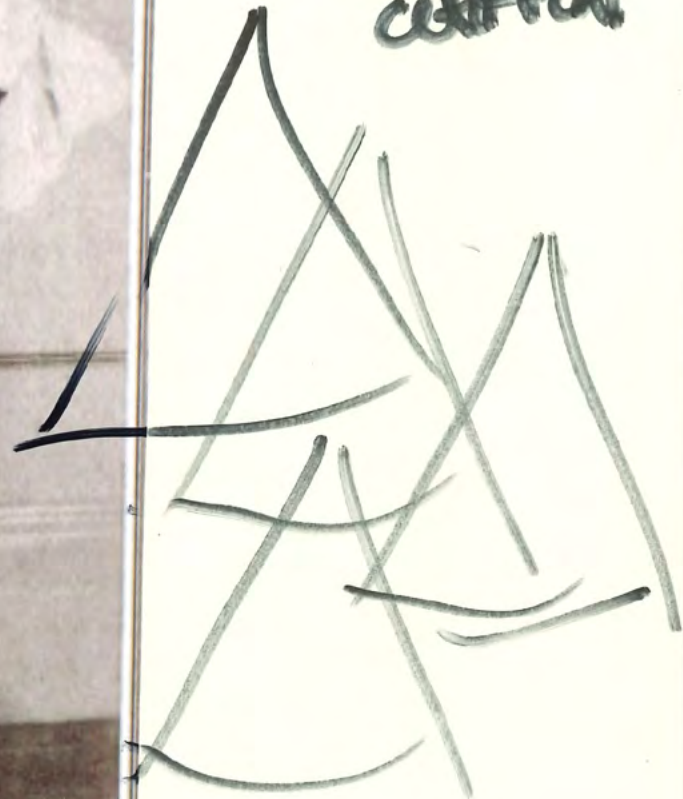


CREATO
omph
omph
omph
omph
omph

PIRELLA GÖTTSCHE
LIVIANO
CAPOTTO.



SPICCHI
TESSUTO
TRIANGOLO
SU ABITO
CUFFIONI



SPICCHI





↓ CAMICIA BIANCA
RICATO SUKHOUSSEI
FORO CANTO.

LA CAMICIA.

RICATO
"A SGLICE" ←
APPLICATO SU
CAMICIA

+ UNOZIONE
TESSUTO.

LINEA DITTA ←
SCOLLO A BARCA.

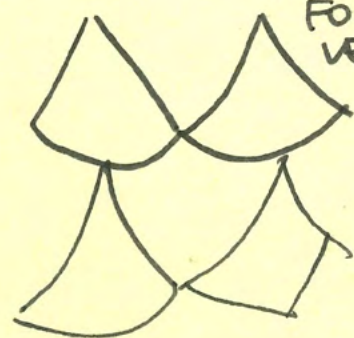


←
L'UNIONE
DIRETTA
A
PAGINE



Creare
con
la Tè
e

catene
100%
FONDA
VERA



FARE ALTRI FOTO
VOLANT +
AGGIUNGERE
MATERICO e FARLO
GLORIOSO.

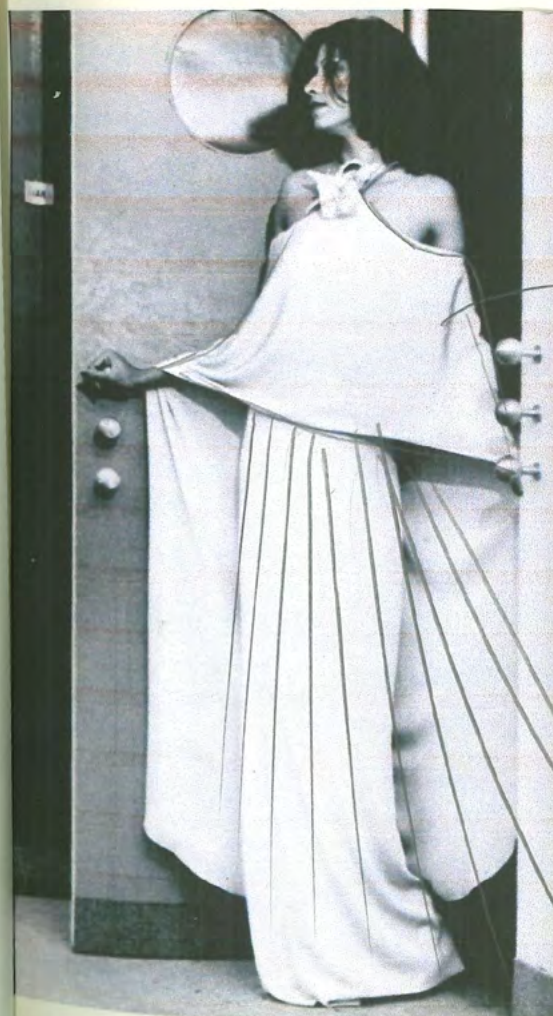




CAPIZZOLA
SU ABITO

CAPPA
ATTACATA
AL PUNTO
LTA

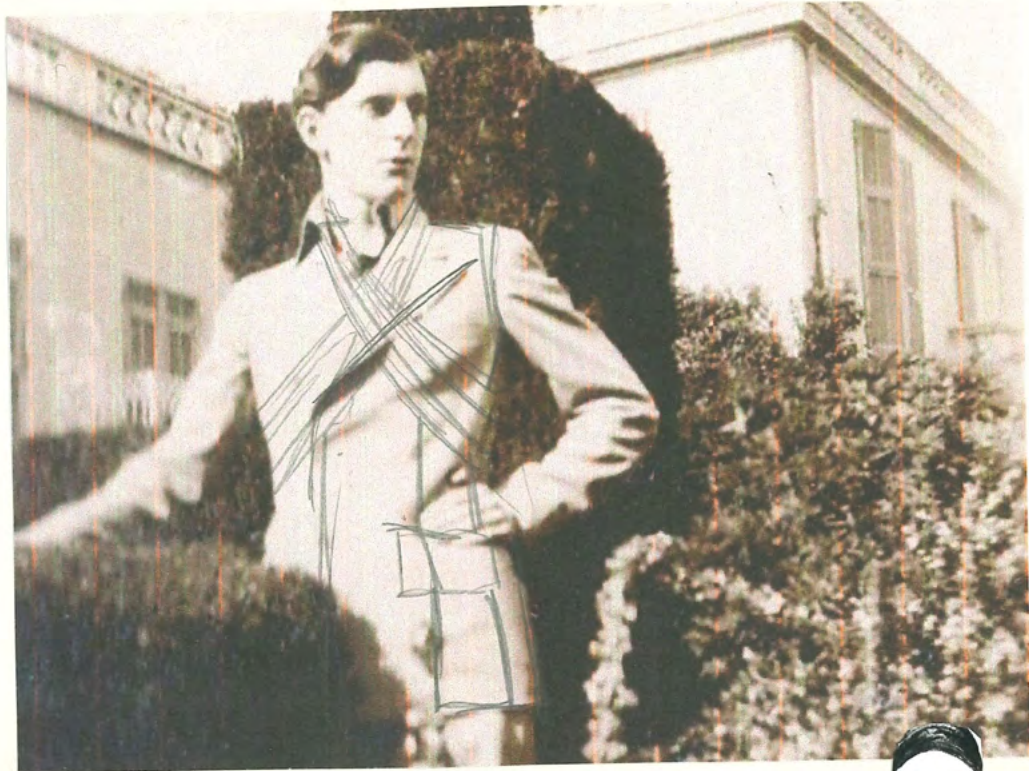
FILATO



TOP VOTO SU
SHORT O
BONA FRANGE
LUNGHE

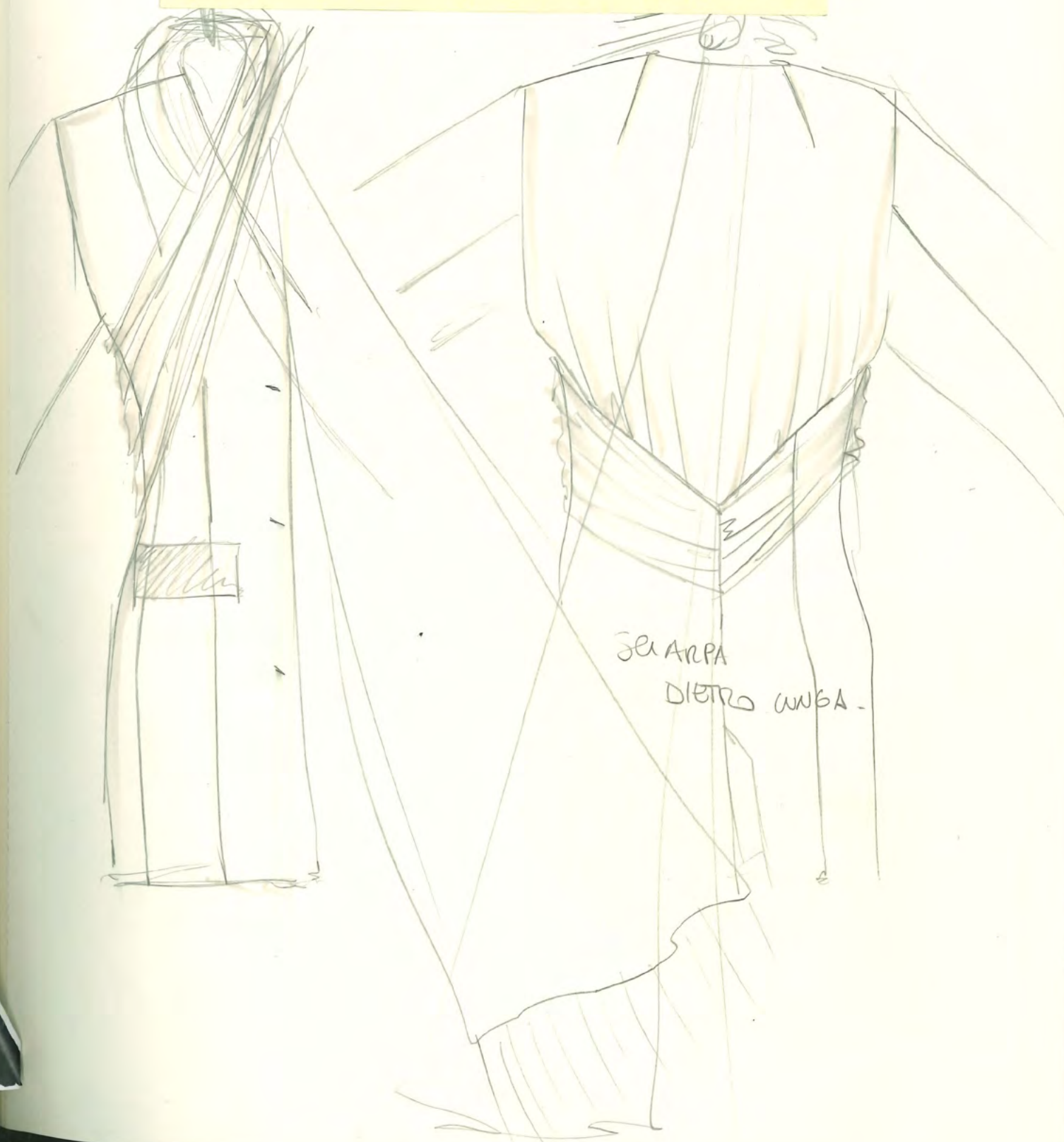
Stampo
cane gattuso

corale



GIACCA MODELLO
PAGARET GRES

+ @ INCROCHIO TOP
DUAAT TOP MISS
BILANI



SEARPA
DIETRO WNGA -



by the way more about - Compensated. H.

by the way more about - Compensated. H.

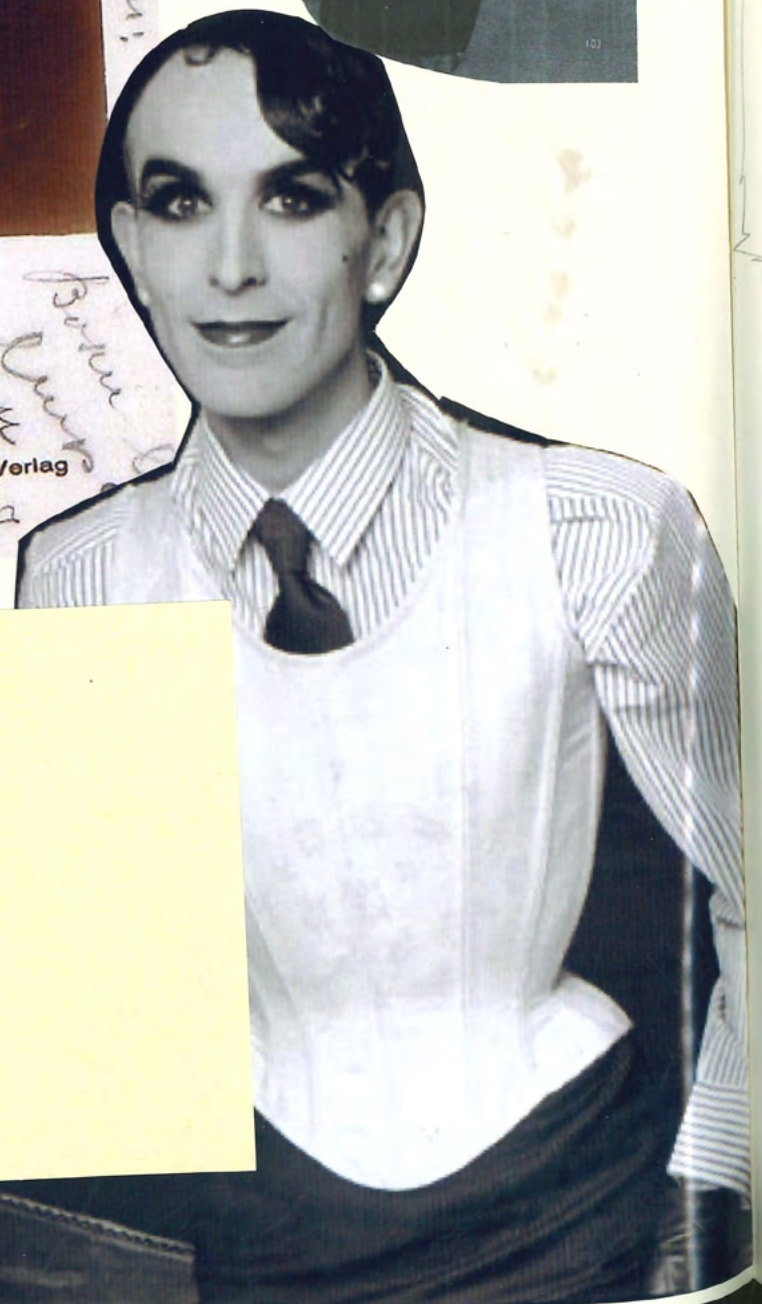
Bonnie me de... Ver... in...



Bonnie me de...

Elga Brink

Bonnie me de... Ver...



Bonnie me de...



+ CINTURA
+ FASOLA
SOPRA

DIETRO PROBAB