

The background is a dark charcoal grey. On the left side, there are several thick, flowing, grey brushstrokes that curve upwards and outwards. On the bottom right, there are more grey brushstrokes, including a large, thick, curved stroke that forms a partial circle.

SHIELDS

BY ISLAM NASHEF

MENTORED BY
ELIORA LEMMER GINSBURG

ABOUT ME

My name is **Islam Nashef**, an artist and a designer maker from Taybeh in occupied Palestine. I study fashion and jewelry design, with a particular focus on shoemaking at Bezalel Academy Of Arts And Design in Jerusalem. I do not see myself as a traditional fashion designer, but rather as a producer of art through fashion—using materials and experimentation as essential tools for personal and existential expression.

My experience as a Palestinian living under occupation is not merely a backdrop to my work; it is deeply embedded in it. My daily life, my language, my movement, and even my relationship with objects are shaped by this political reality. Therefore, my designs often reflect a layered, emotionally charged identity. I draw inspiration from my surroundings, emotions, and interactions with unconventional materials. Fabric, leather, and metal become spaces for exploring the self and archiving emotion.

Within the Palestinian art scene, fashion is rarely recognized as a valid form of contemporary art. I aim to challenge this exclusion and propose fashion as an expressive medium capable of carrying political narratives, human experience, and aesthetic vision. For me, fashion is not ornament or commodity—it is a visual language, a presence, and a form of soft resistance.



MOOD BOARD



CONCEPT

This collection explores the tension between the ego's desire to protect, control, and impress, and the contrasting emotions of vulnerability, tenderness, and a deep yearning for love – all while seeking a renewed sense of inner harmony.

The garments are designed with elements that resemble armor, evoking a modern-day warrior aesthetic.

Leather was chosen as the primary material for its strength and adaptability, serving both as a durable fabric and a symbolic shield – much like skin, which safeguards the body's fragility.

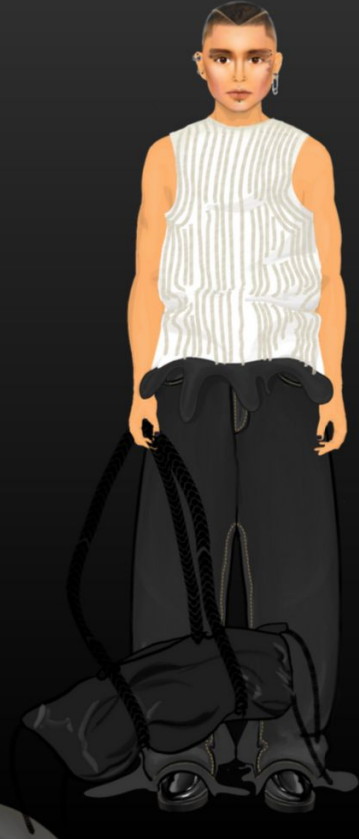
The designs range from structured, tailored silhouettes that emphasize the body's shape to looser, more fluid forms that incorporate supportive elements. A zigzag stitch is used as a functional technique for connecting multiple seams. The black-and-white palette reflects the interplay of opposing emotional forces.

Ultimately, the look aims to project confidence – even in moments of inner doubt.

Materials: Nappa leather, cotton rope

Working techniques : Creating reliefs using ropes, hardening and stabilizing using lamination with hymo.

THE COLLECTION



THE COLLECTION

SHIELDS

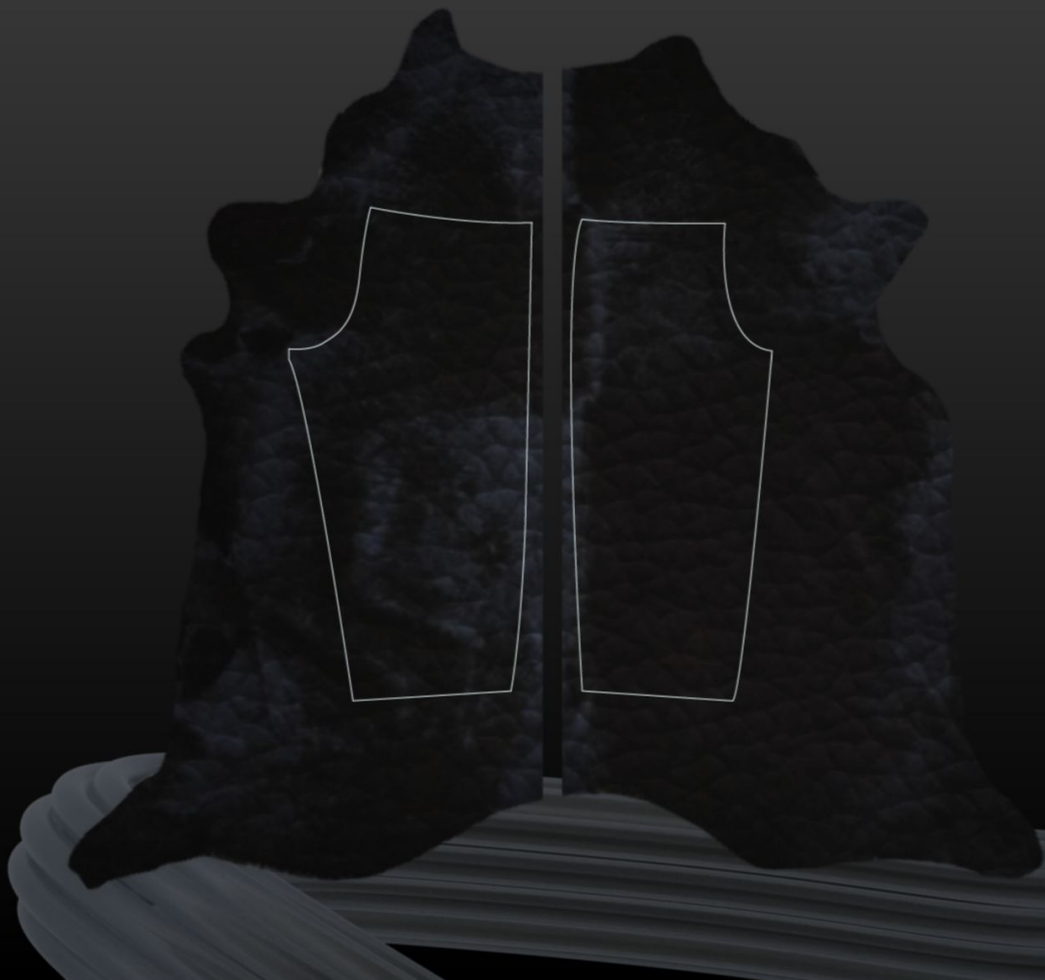


THE CHOSEN DESIGN



THE CHOSEN DESIGN

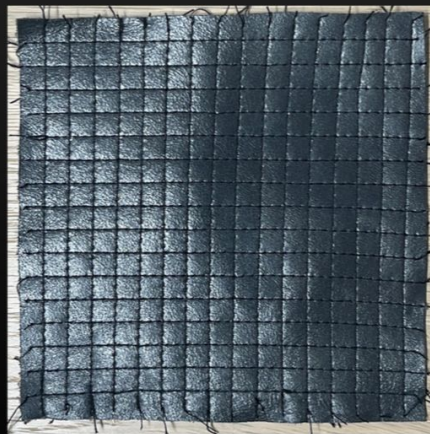
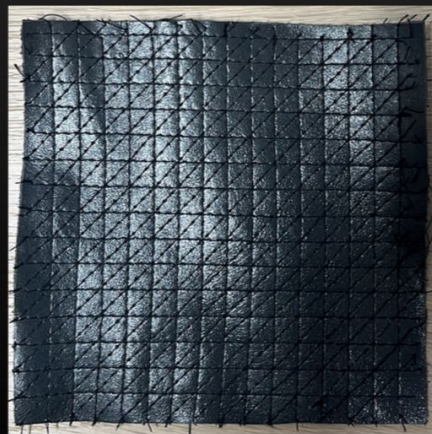




MATTER

R&D

**HOW TO WORK
WITH
NAPPA
LEATHER**





PROCESS



PROCESS



PROCESS



PROCESS



PROCESS



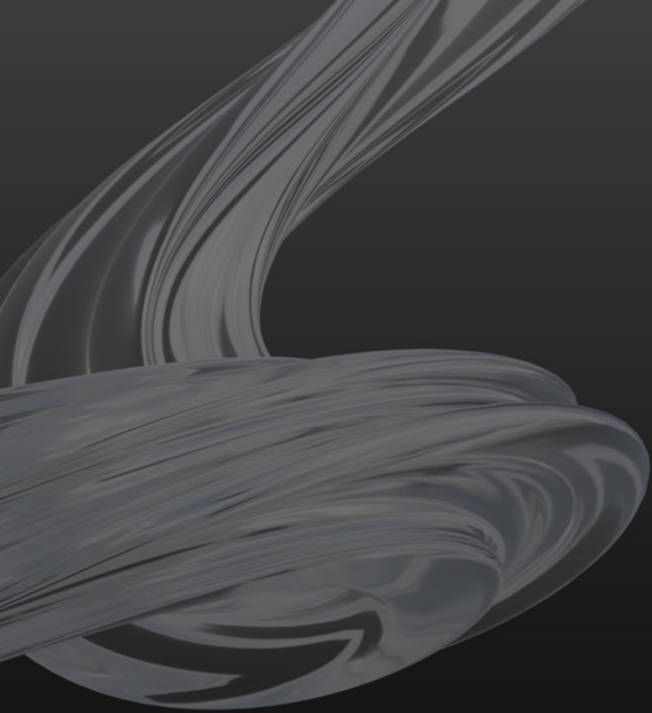
PROCESS











THANK YOU





CONTACT ME :

islamnashef.12@gmail.com

IG: @Nashefislaam