

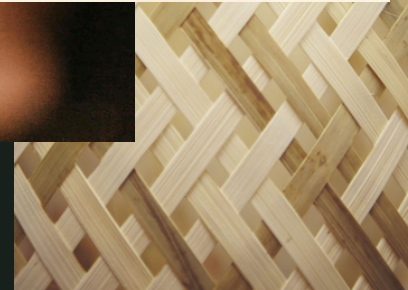
個人袋包設計

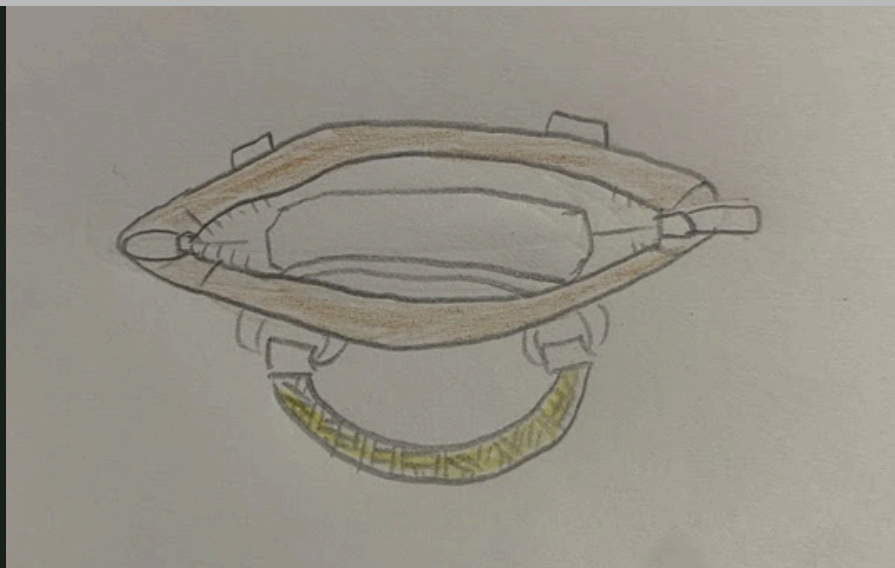
Personal Bag Design Project



意象版

Mood Board





作品簡介

Introduction to the work

此款托特包以環保皮革(佔50%)建構包底及提把，確保結構穩固耐用。包身巧妙使用竹編棉布及皮革拼接，並有一個皮革口袋在包包外側，包口則是以拉鍊做開闔，包體內側也有一個口袋，非對稱的材質結合，展現兼具永續理念及現代簡約風格。

This tote bag is made of eco-friendly leather (50%) with a bottom and handle to ensure a stable and durable structure. The body of the bag is cleverly made of bamboo cotton and leather splicing, and there is a leather pocket on the outside of the bag, the mouth of the bag is opened and closed with a zipper, and there is also a pocket on the inside of the bag.



設計理念

Design concept

以天然環保的植鞣革做基底佔作品的50%，再採用天然的再生材質竹編以及棉布做結合，設計成硬挺的袋包，可以讓整體更加簡約實用，款式以大眾日常的手提袋出發，增加一些小口袋讓小東西有地方放不會找不到。

The base of natural and environmentally friendly vegetable-tanned leather accounts for 50% of the work, and then uses natural recycled materials bamboo weaving and cotton fabric as a combination, designed into a stiff bag, which can make the overall more simple and practical.



設計圖

尺寸:
寬度:上緣40CM、下緣32CM
(上寬下窄)
高度:28CM(不含提把)
底寬:12CM
提把高度:22CM

竹編
Bamboo weaving

Dimensions:
Width: 40cm on the upper edge, 32cm on
the bottom edge (wide at the top and
narrow at the bottom) Height: 28cm
(excluding handle) Bottom width: 12cm
Handle height: 22cm

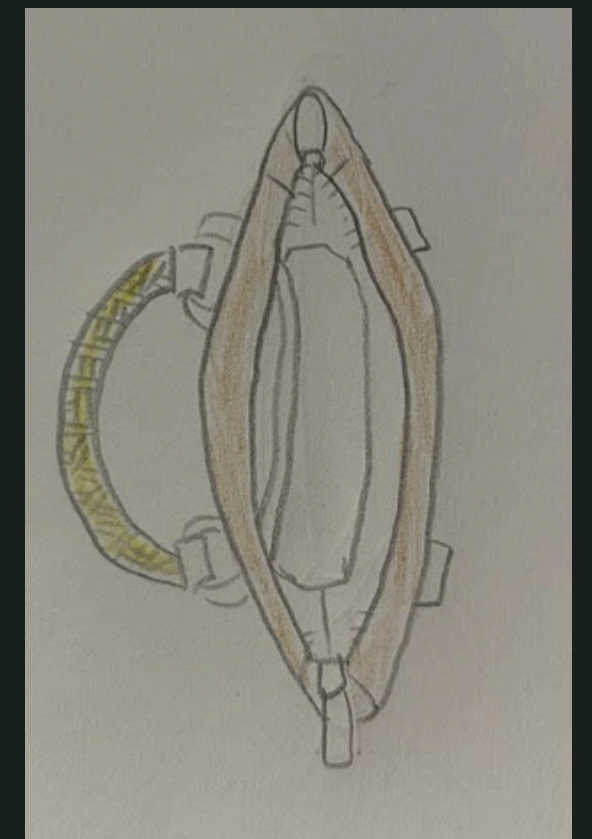
環保皮革
Eco-friendly leather

正面圖
Front view

棉布
Cotton

拉鍊
Zipper

側面圖
Side view



俯視圖
Top view



Thank you

