

Bianca Gallian Guimarães
Real Leather Stay Different Entry

About me

My name is Bianca, I am 21 years old, and I am currently in the 7th semester of my Fashion Design degree. My work is centered on the relationship between conceptual fashion, material experimentation, and product development. My experience as a Product Care Intern at Gucci deeply shaped my understanding of luxury craftsmanship, particularly in relation to leather goods, material durability, finishing, and the emotional value of well-constructed products.

With additional experience in fashion retail and product-focused environments, I have developed a strong sensitivity to detail, construction, and the narrative potential of materials. Through my practice, I seek to create pieces that combine artistic expression with technical intention, transforming garments into objects of identity, memory, and transformation.

Epilógue- My Entry Project

Epilógue is a collection born from an imagined world after collapse, a poetic end-of-world landscape where destruction becomes the foundation for reinvention. Inspired by the deconstructed and conceptual language of Maison Margiela, the collection explores tension between ruin and sophistication, fragility and resistance.

Leather is the central material of the project, chosen for its symbolic and physical strength. More than a luxury element, leather is treated as a narrative surface: marked, transformed, cut, and reconstructed to embody memory and survival.

Through asymmetrical cuts, raw finishes, unconventional assemblies, and experimental surface treatments, the garments challenge traditional ideas of structure and wearability.

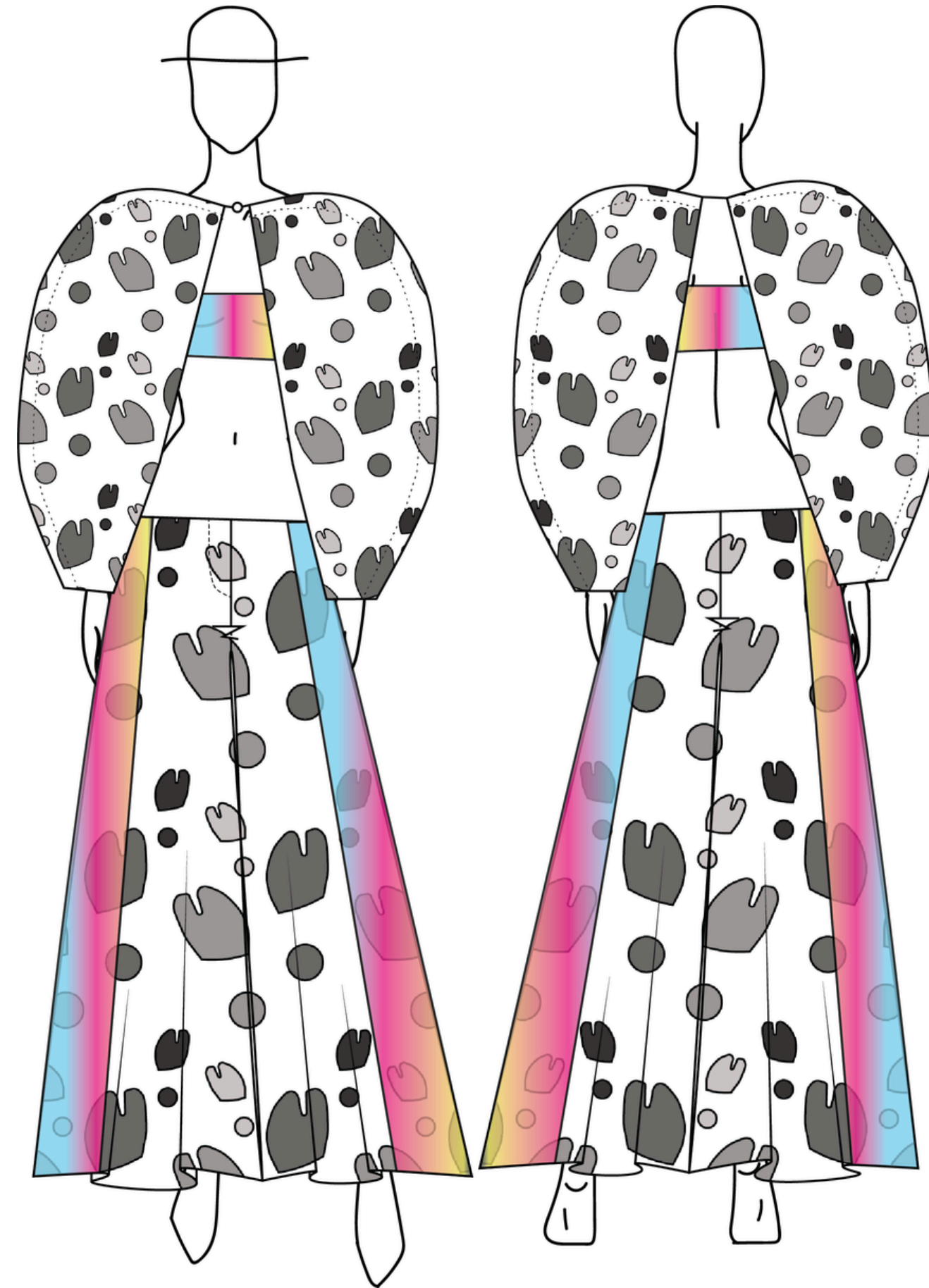
Each piece proposes a new silhouette shaped by collapse, where imperfection becomes intentional and fragmentation becomes beauty.

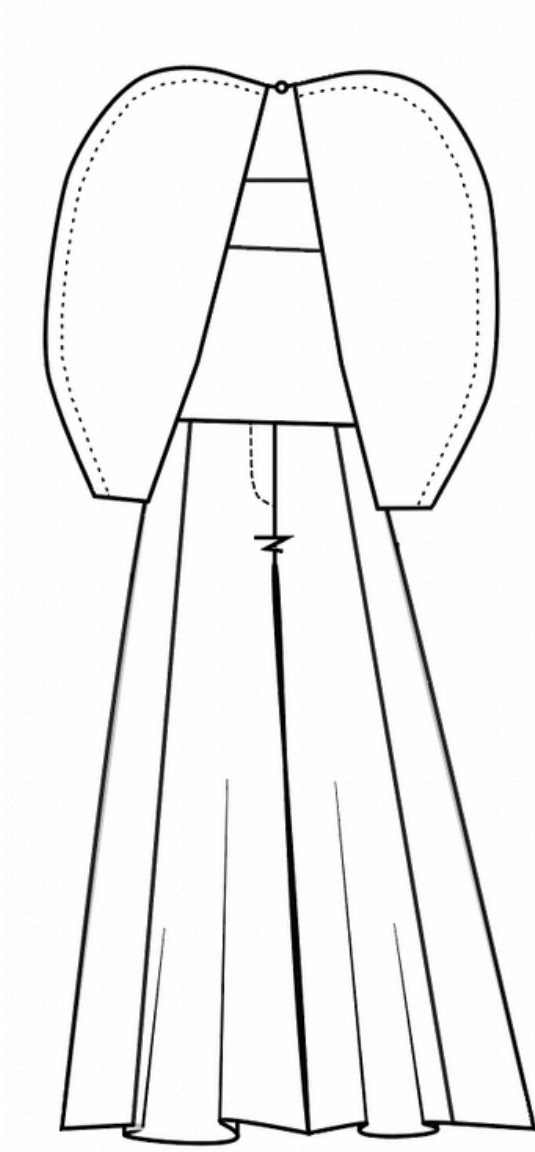
Epilógue transforms leather into a medium of emotional architecture, where craftsmanship and deconstruction coexist. The collection is not only about dressing the body, but about expressing a contemporary condition: a world in tension, where even in ruin, beauty can still emerge with force, elegance, and meaning.



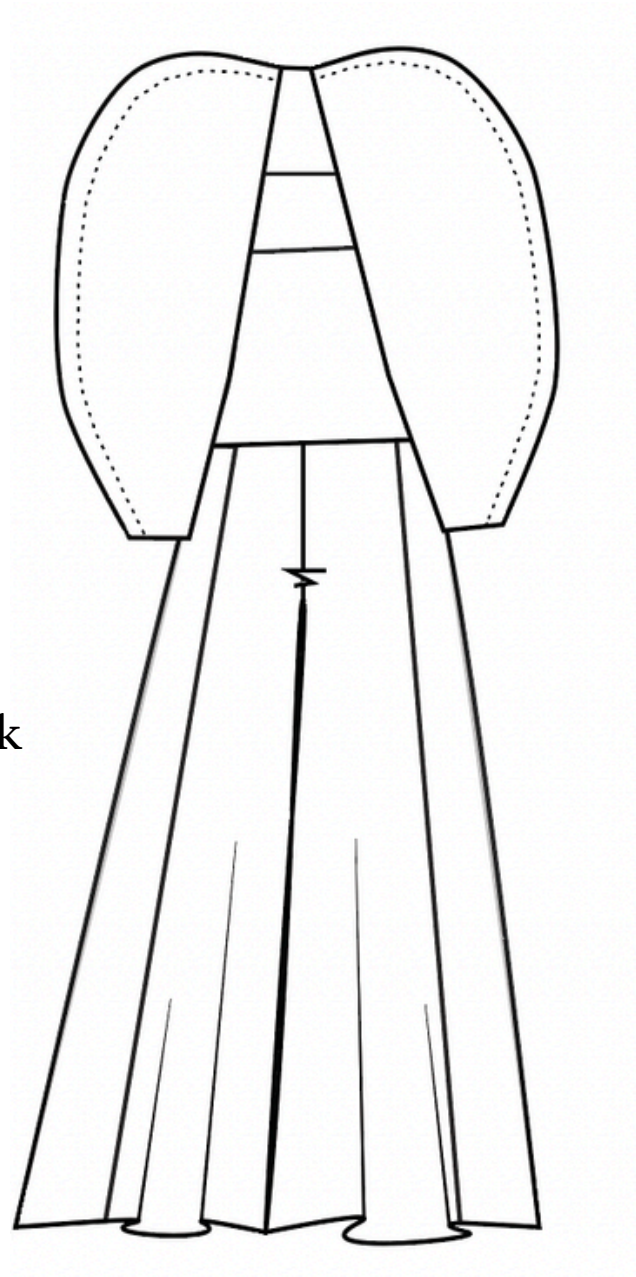
1405

-colors and materials to be adapted





front



back

- Materials:
- Pressure Button
 - Patterned fabric
 - Zipper
 - Thread
 - Leather options
- (based on the samples):



