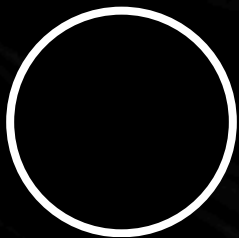
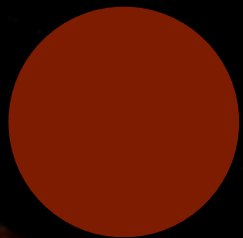


A white hoop snake is coiled on a large, grey, textured rock. The snake's body is thick and cylindrical, with a smooth, white surface. Its head is positioned towards the right side of the frame, with its mouth slightly open, revealing a dark interior. The background is dark and out of focus, suggesting a natural, rocky environment. The lighting is soft, highlighting the texture of the rock and the smoothness of the snake's skin.

HOOP

SNAKE



CONCEPT

A dark luxury clutch bag collection inspired by the symbolism of the snake, representing mystery, power, and relationships that continue to linger in memory. The design emphasizes the serpent's flowing curves, snake-scale patterns, and gold metallic details, creating a look that is both luxurious and intriguingly enigmatic.

BUDGET

- price 12,000 – 25,000 bath

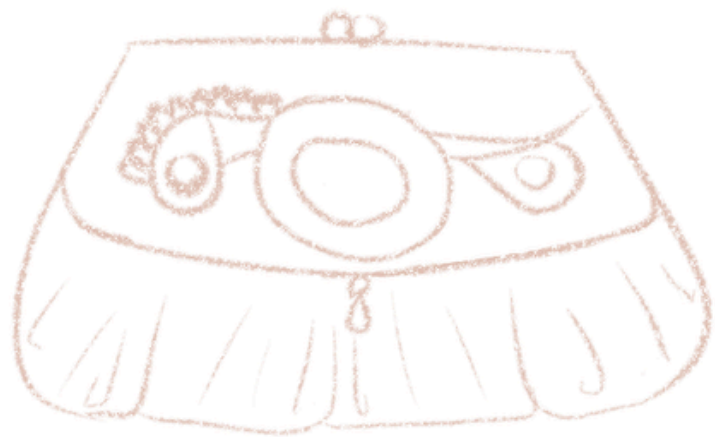
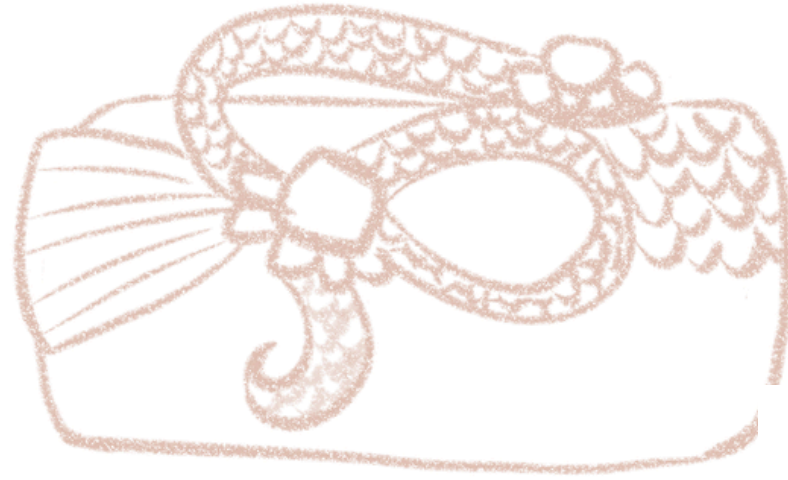
MATERIAL

- leather 50%
- velvet 30%
- lace & satin 15%
- stone 5%

TARGET GROUP

Women aged 40-50 with middle to high income who appreciate luxury fashion, distinctive design, and use clutch bags for evening events and special occasions.

SKETCH

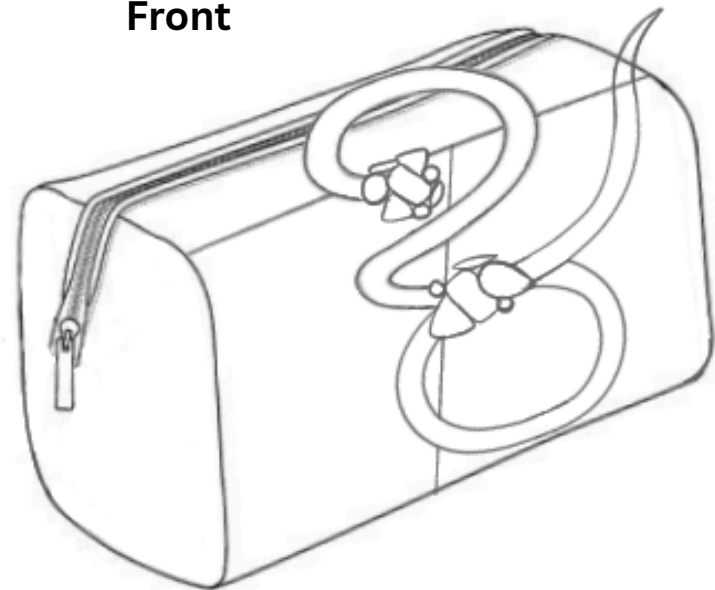


SKETCH

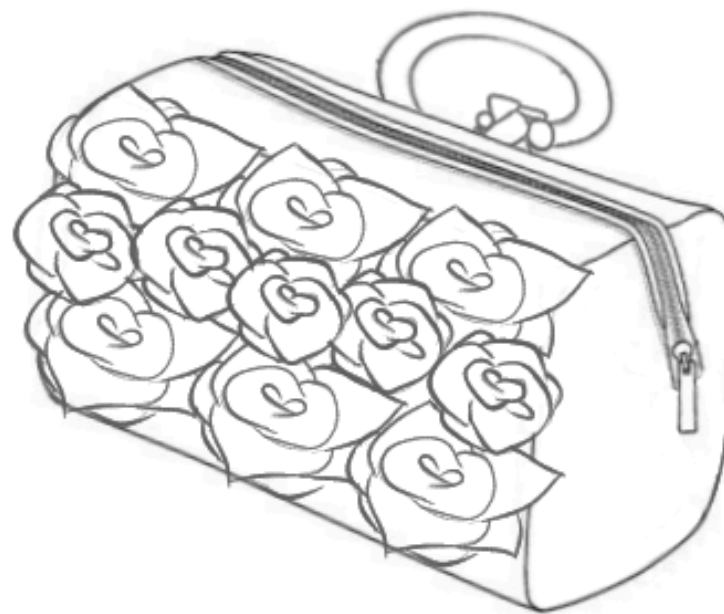




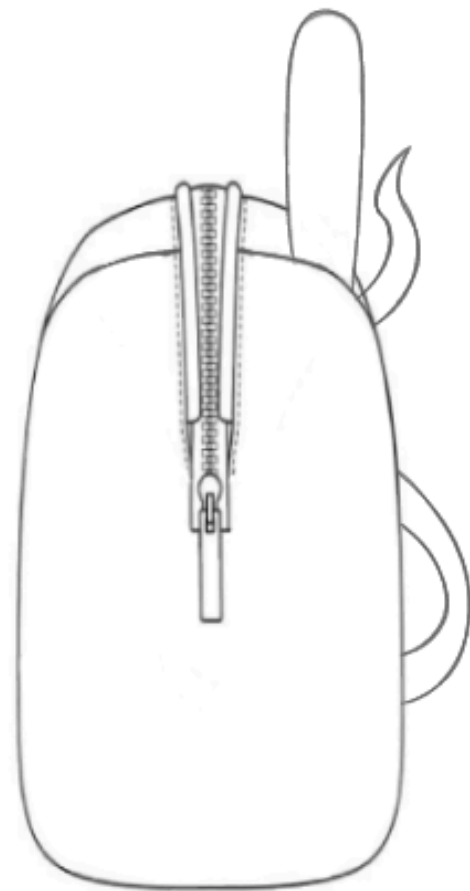
Front



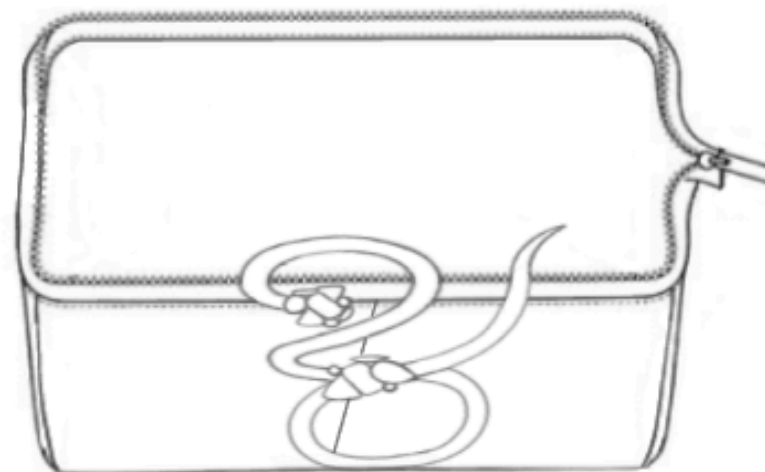
Back



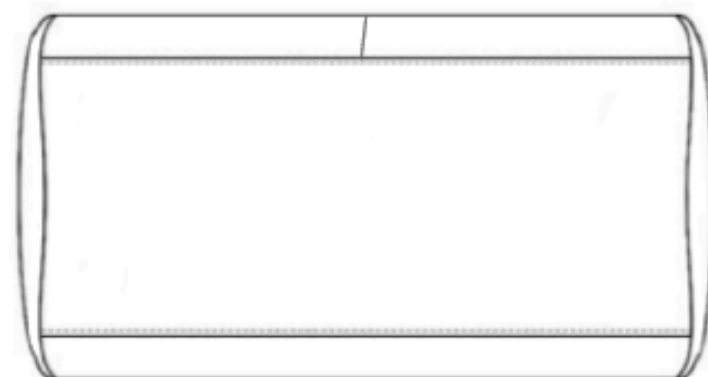
Top



Ruffles



Side

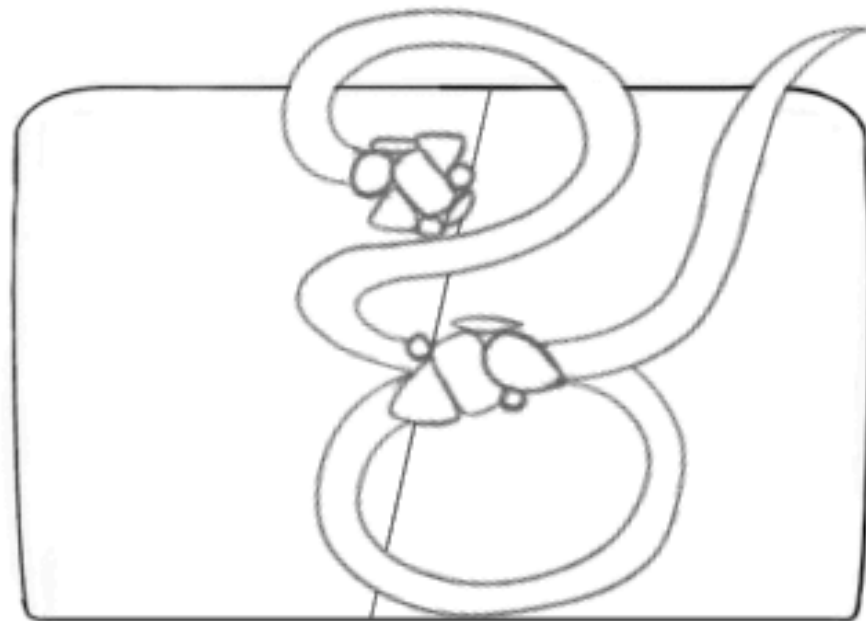


Bottom

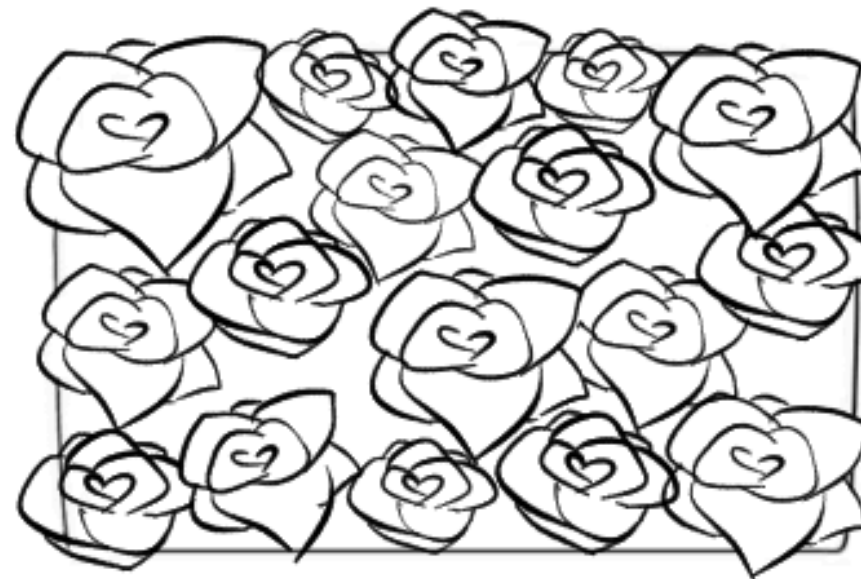
Top



Front



Back



Scale
inches

4.5



Side right

Side left



Bottom



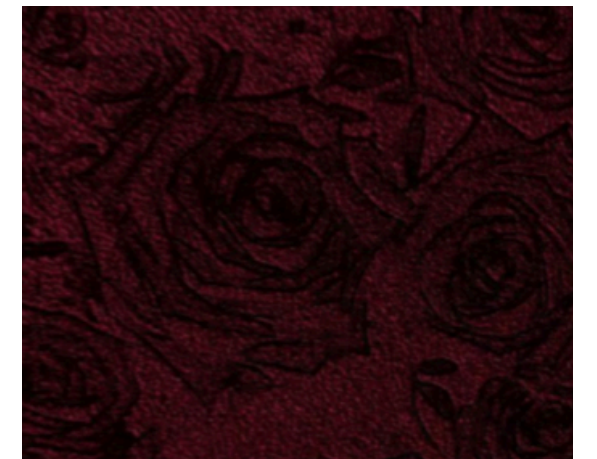
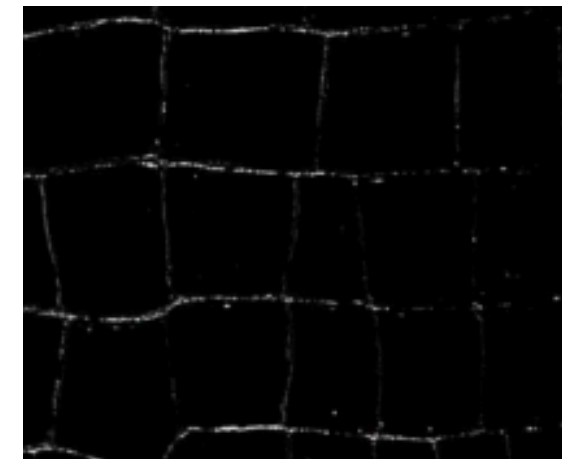
9



MOCK - UP

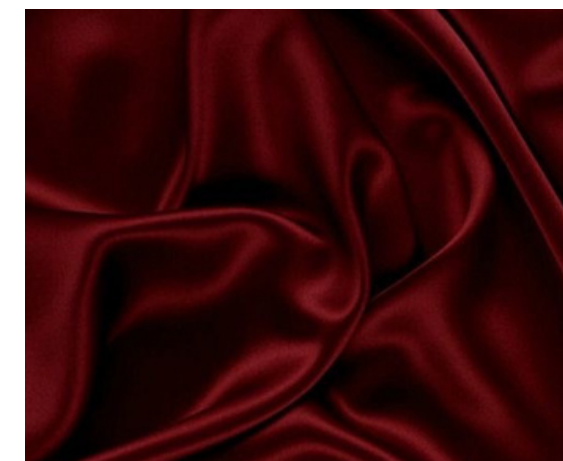


MATERIAL



LEATHER

LACE



SATIN

VELVET

PROCESS



FINAL

