



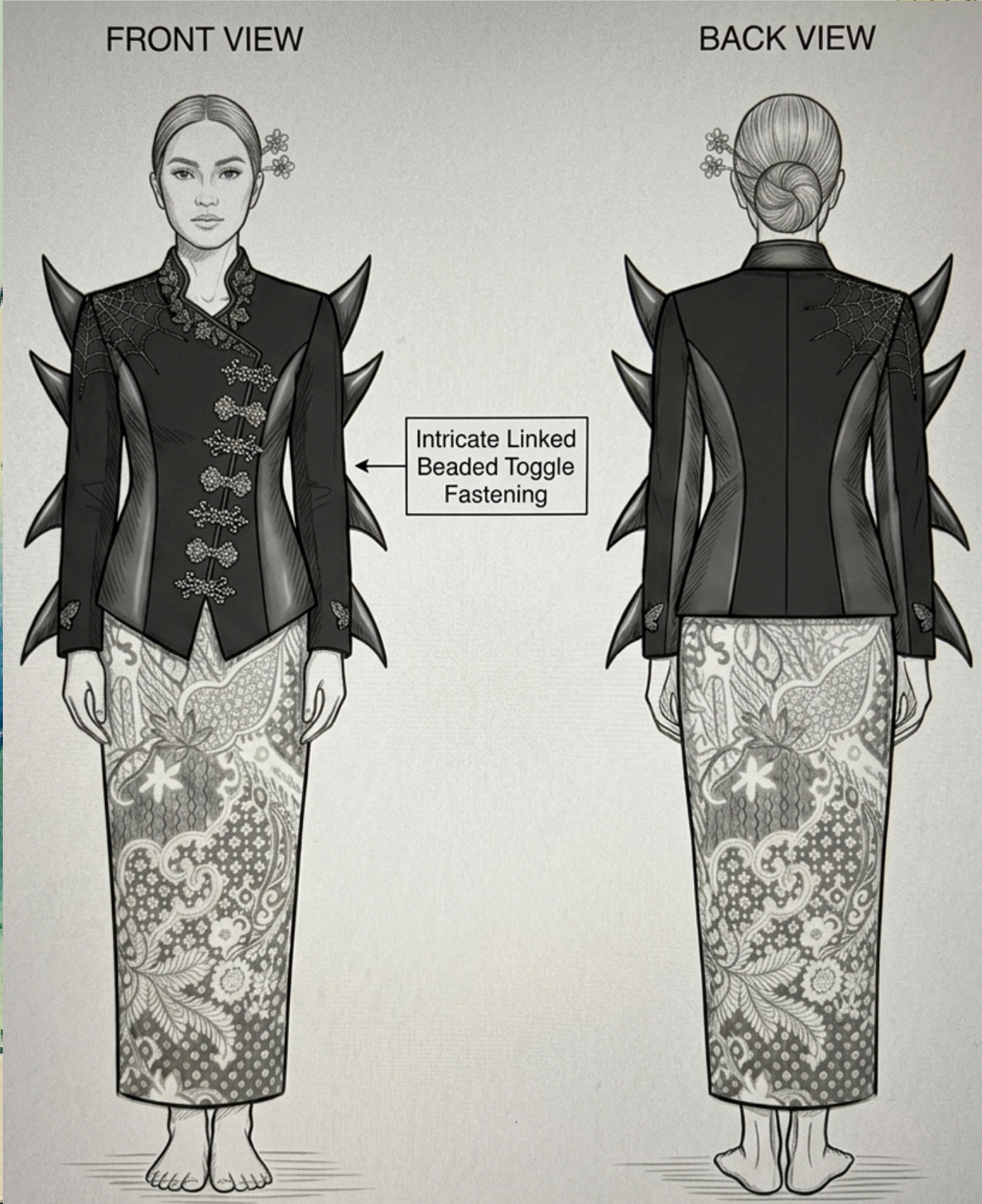
WILDS

Threads of Resilience

Introduction

My design inspiration comes from spiders and Javanese culture. Spiders symbolize patience and resilience, and I express the extension and power of spider webs through the lines and structure of the clothing. At the same time, I combine traditional Batik patterns and techniques, allowing the design to retain the delicacy and depth of Eastern culture within a modern style, presenting a modern Eastern aesthetic that blends tradition and innovation.





Top



The upper body is made of black leather, highlighting its structural design.

The arms are wrapped in leather on both sides, mimicking the shape of spider legs to create a smooth, three-dimensional silhouette.

Skirt

The A-line skirt features a side slit for easy movement.

Traditional Batik fabric they usually Apply wax to the fabrics (woven cloth, cotton, or silk)

Printed leather

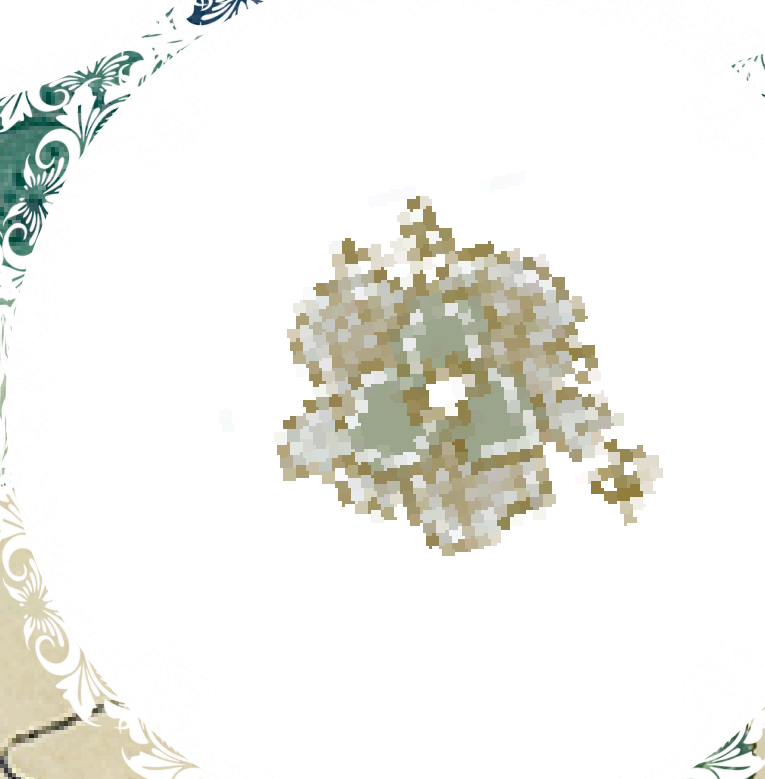
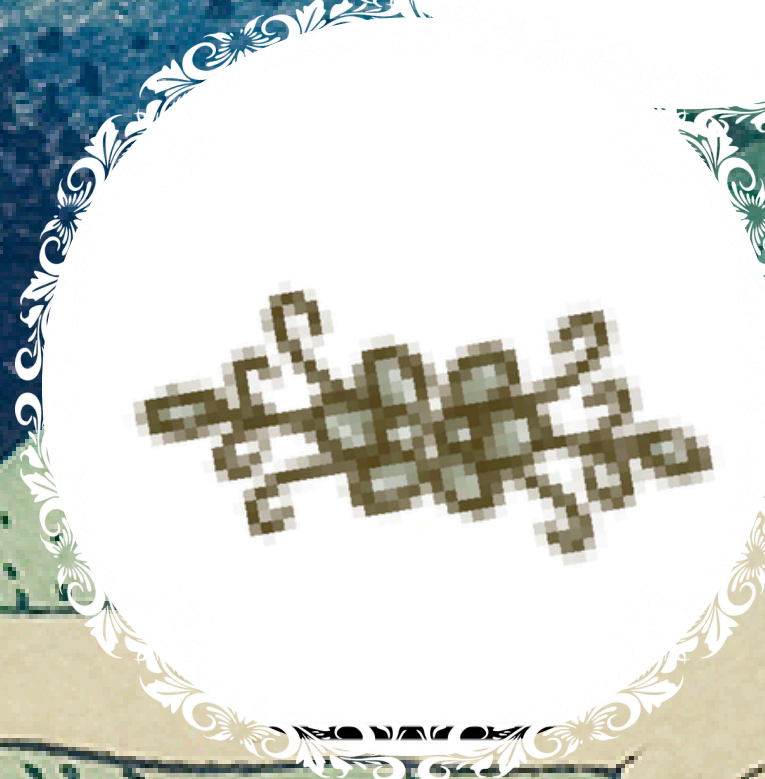
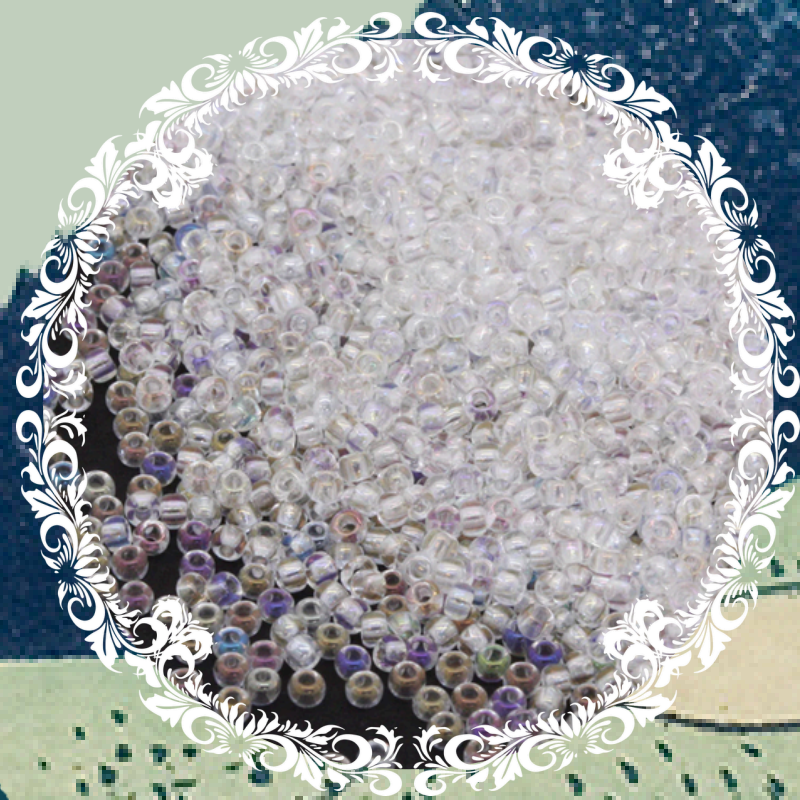


Accessories

Gold-plated accessories: The shoulder ornaments will be shaped like a spider web (made of beads).



Traditional Indonesian brooch



The background is a traditional Japanese-style illustration. It features a large, snow-capped mountain in the center, a winding river or stream on the left, and various plants and flowers on the right. Two birds are flying in the upper left corner. The overall style is reminiscent of a woodblock print or a traditional ink wash painting with a muted color palette.

Thank You