

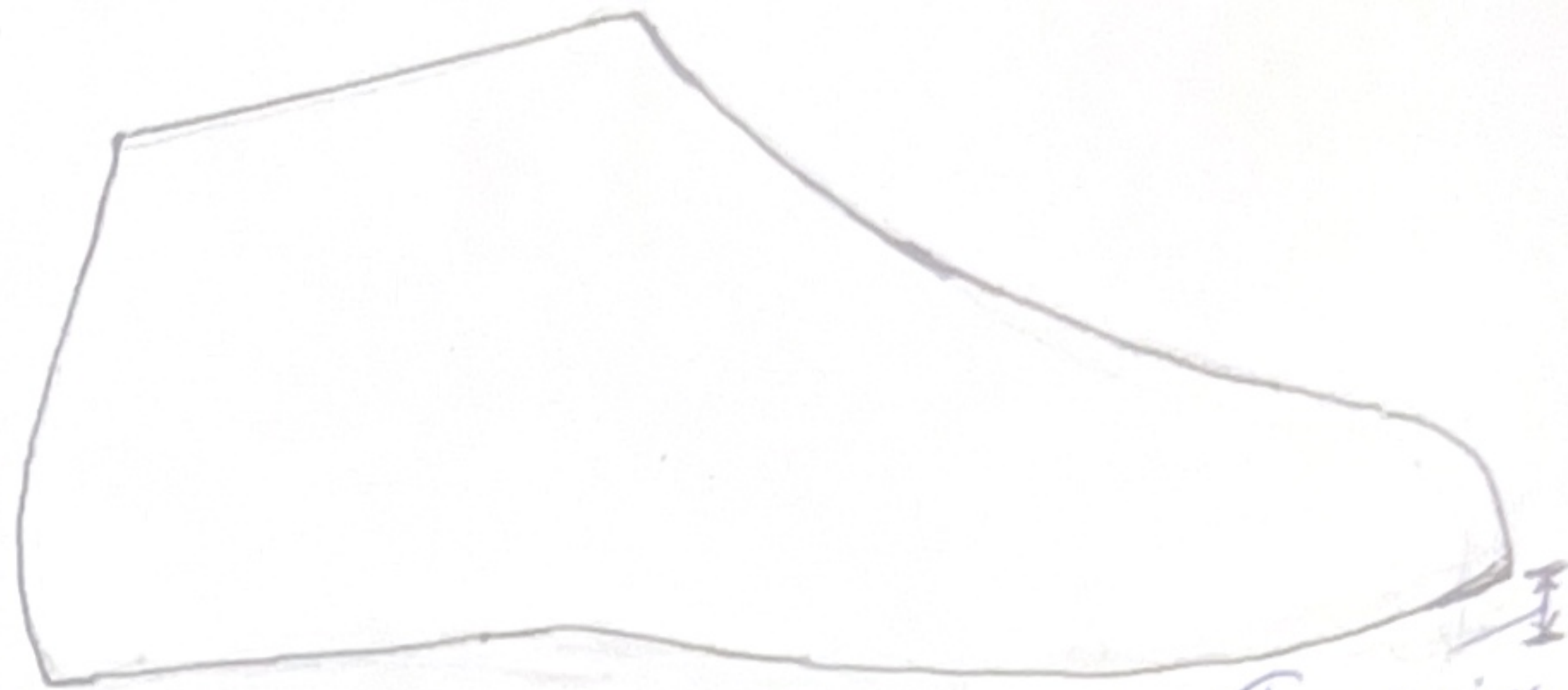
LAST MODIFICATIONS

SIZE 36 Sample Size

SIDE PROFILE

ADJUSTMENTS CONSIDERED

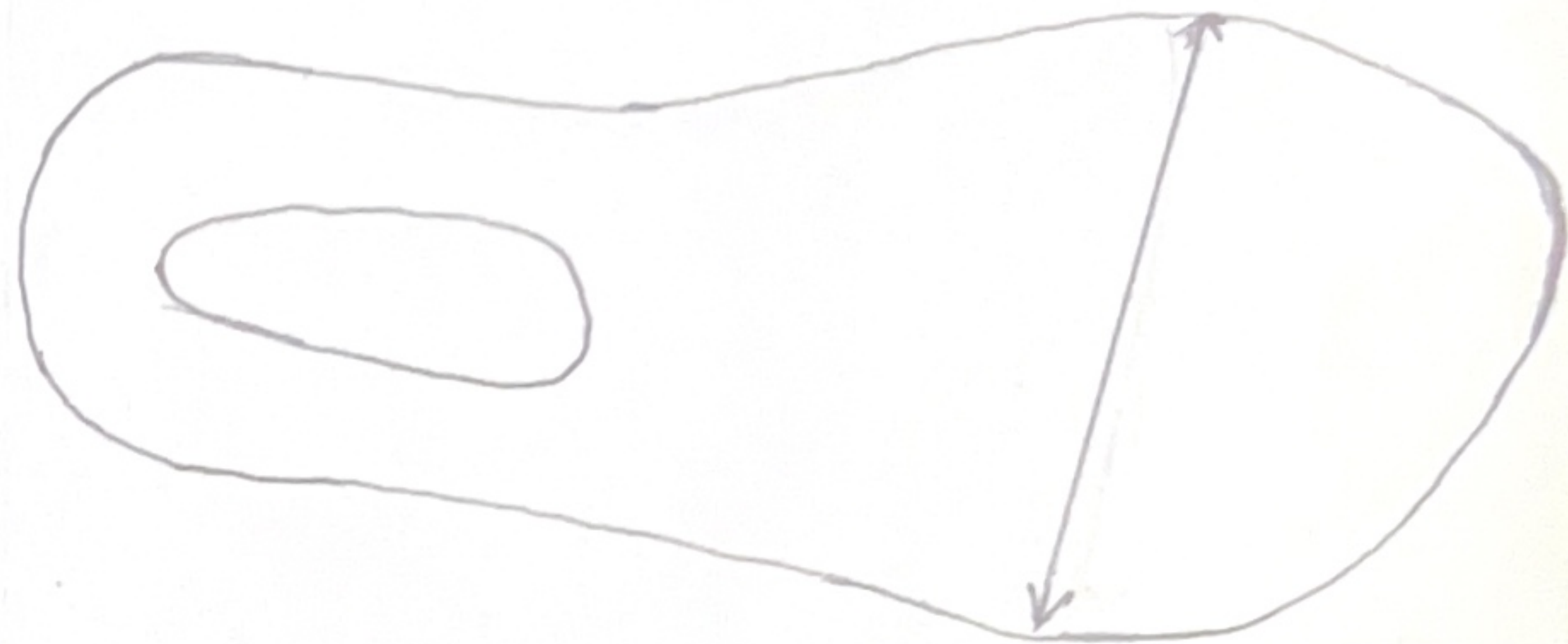
- Lower toe spring last. (less than 1cm)
- Enabling smooth forward rolling during the walking.



TOP VIEW

Lower Toe spring

- Spread toe box to align with toe formation



BOTTOM VIEW

- > Wide ball width to allow toe comfort.



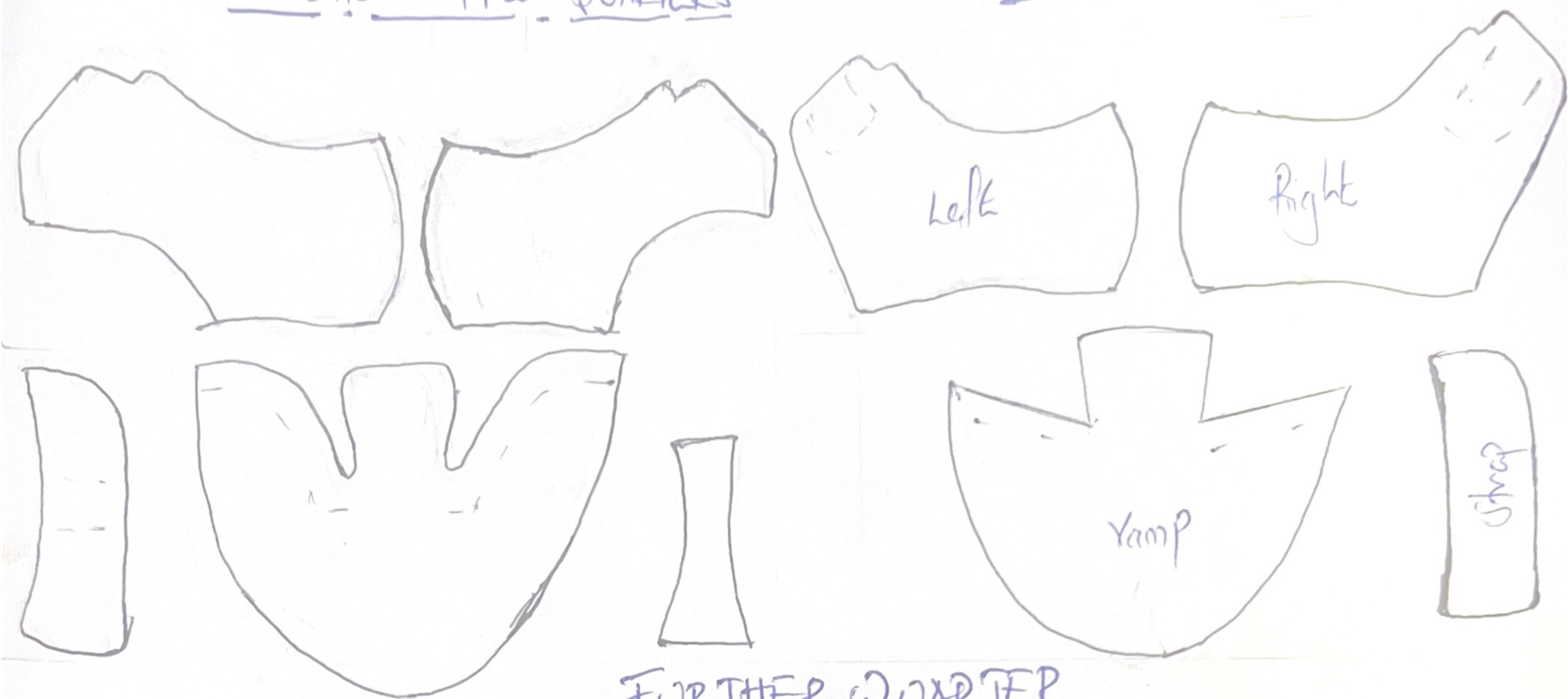
PRIMARY ADJUSTMENTS ON SHOE UPPER

PHASE 1

- For efficient production, backstraps & curves at the quarter-vamp joining were eliminated.

COMMON UPPER QUARTERS

ADJUSTED

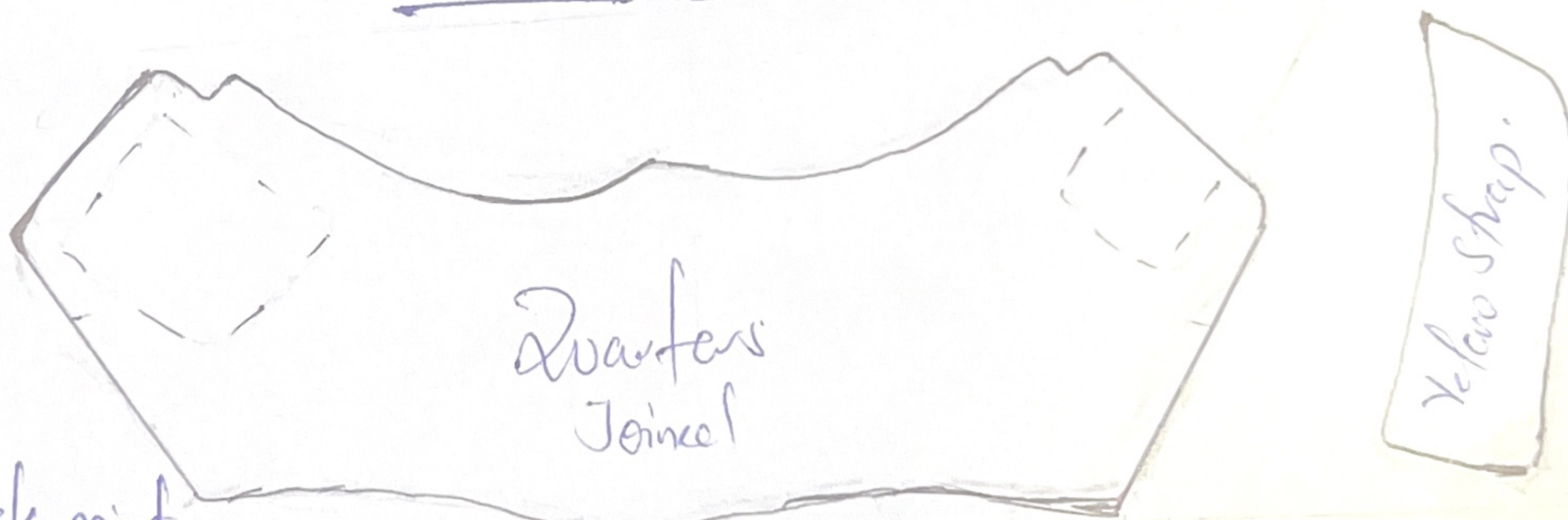


FURTHER QUARTER ADJUSTMENT

- Joined quarters
→ Reduced stitch work.

→ Strong counter area

→ Hide visible lock point.



INTERIOR

→ Cotton fabric vamp lining.

→ Cow leather lining at the counter area.

→ Quarters lined with a black knit polyester mesh fabric laminated with foam.



INSOLE, MIDSOLE & SOLE CONSTRUCTION

INSOLE

→ leather lining (Full)

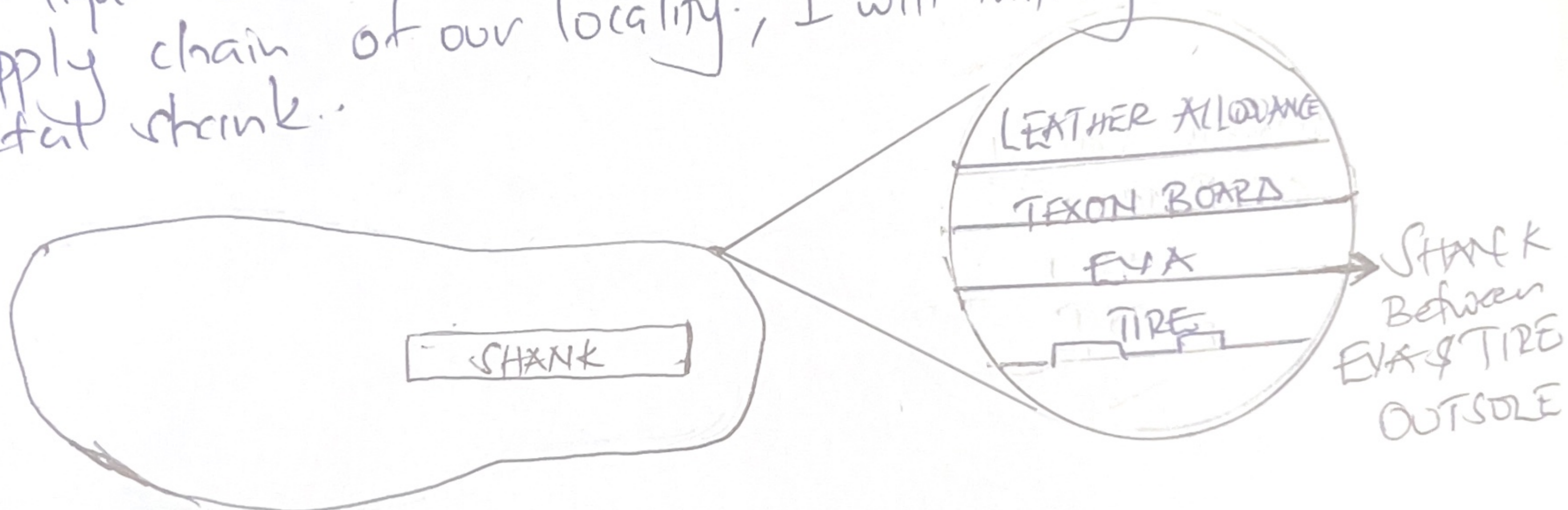
→ Soft Oval EVA FOAM.

* For comfort under neath the feet



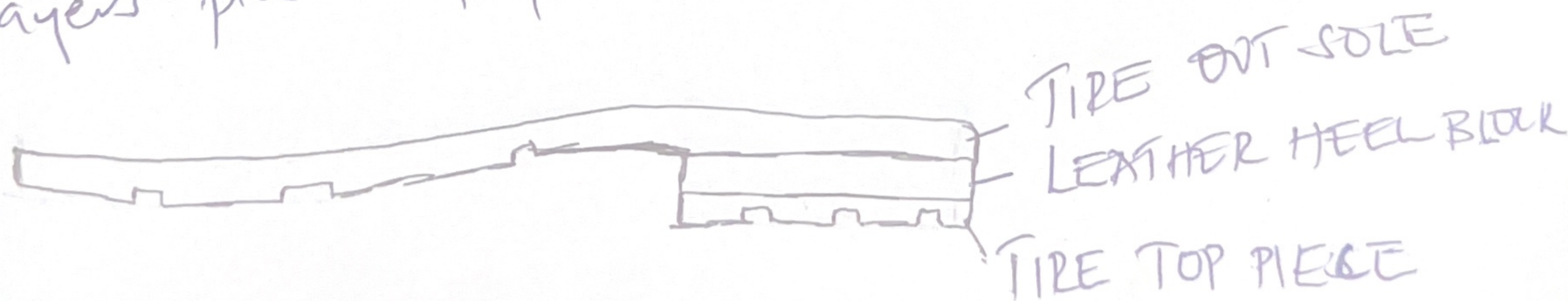
MIDSOLE

(Joined to the upper using a ~~rough~~ stitch down construction)
 → The upper will be joined to a texon and EVA foam layer for more bounce and long life. Thus keeping the shoe pain light. Due to the absence of T.P.U chanks in the supply chain of our locality, I will initially consider a metal shank.



SOLE

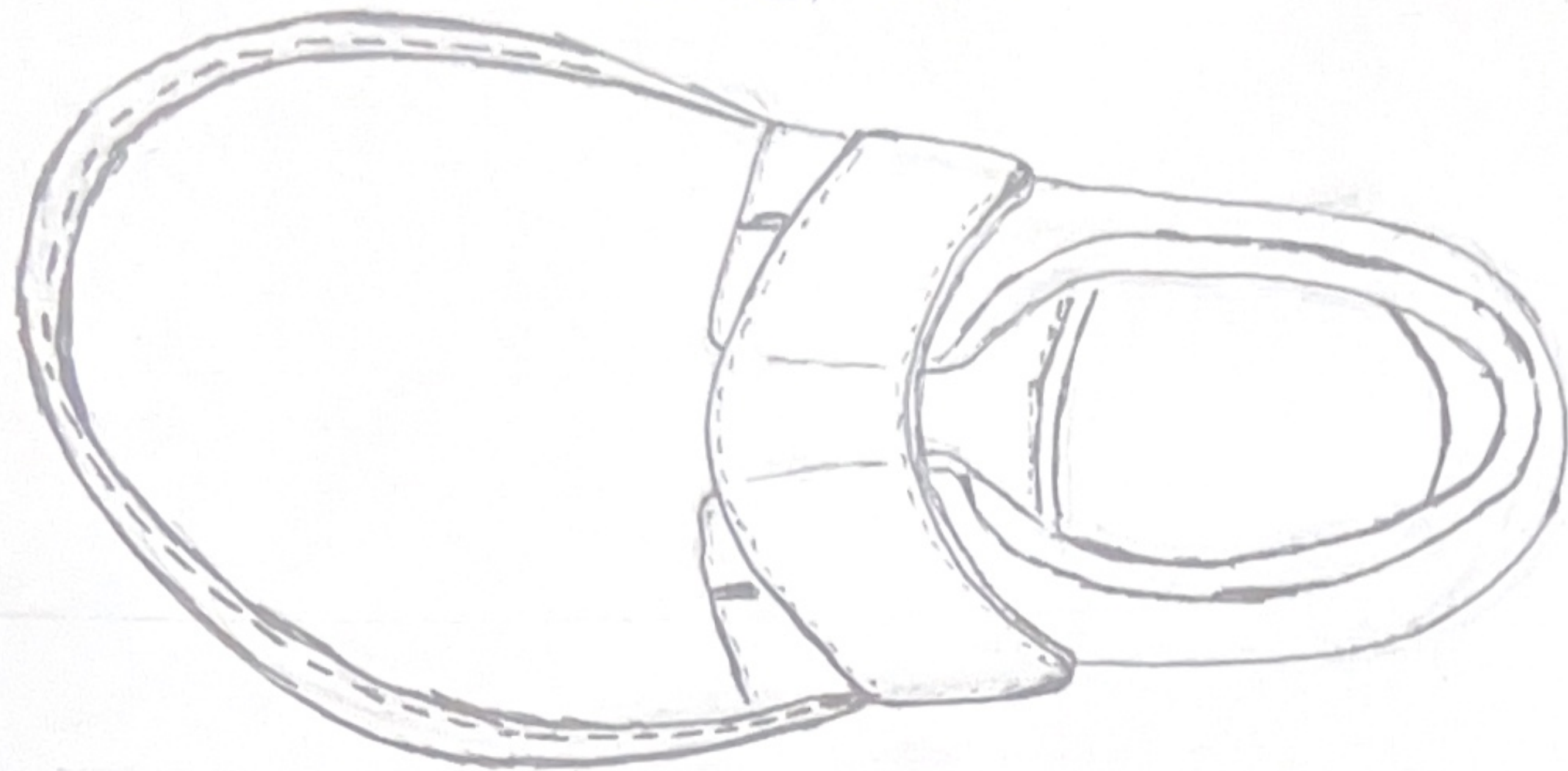
Assembled using tire outsole and leather heel block layers plus a top piece made out of tire.



FINAL SKETCH CONCEPT

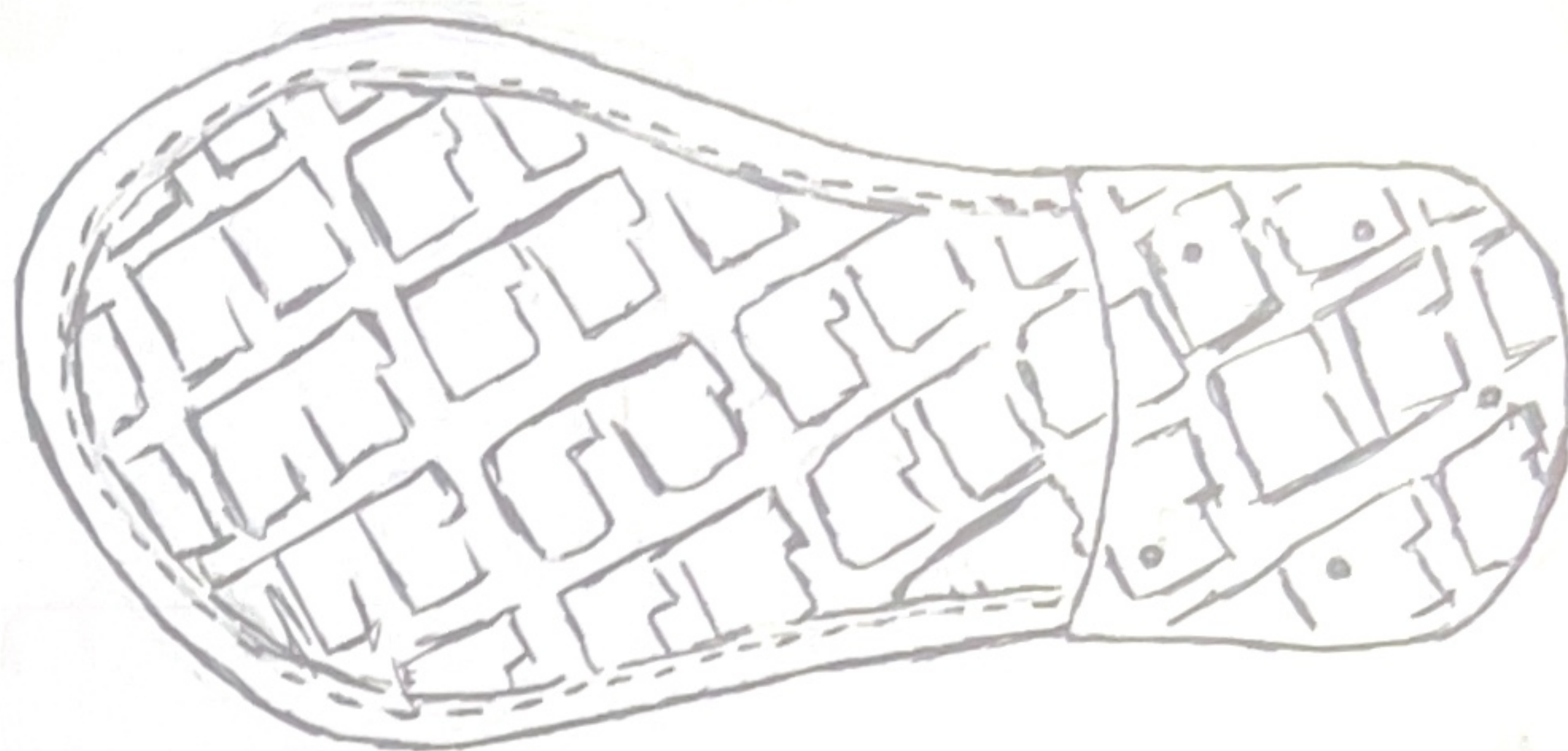
TOP VIEW

- Wide toe box, spread for toe relaxing.
- Cushioned top line & tongue.
- Stitch down construction.



BOTTOM VIEW

- Bottom stitched to upper.
- Nails in the top lift for firm grip.



SIDE VIEW (OUTSIDE)

- Lower toe spring
- Lower heel and heel breast for an extra grip on slippery surfaces.



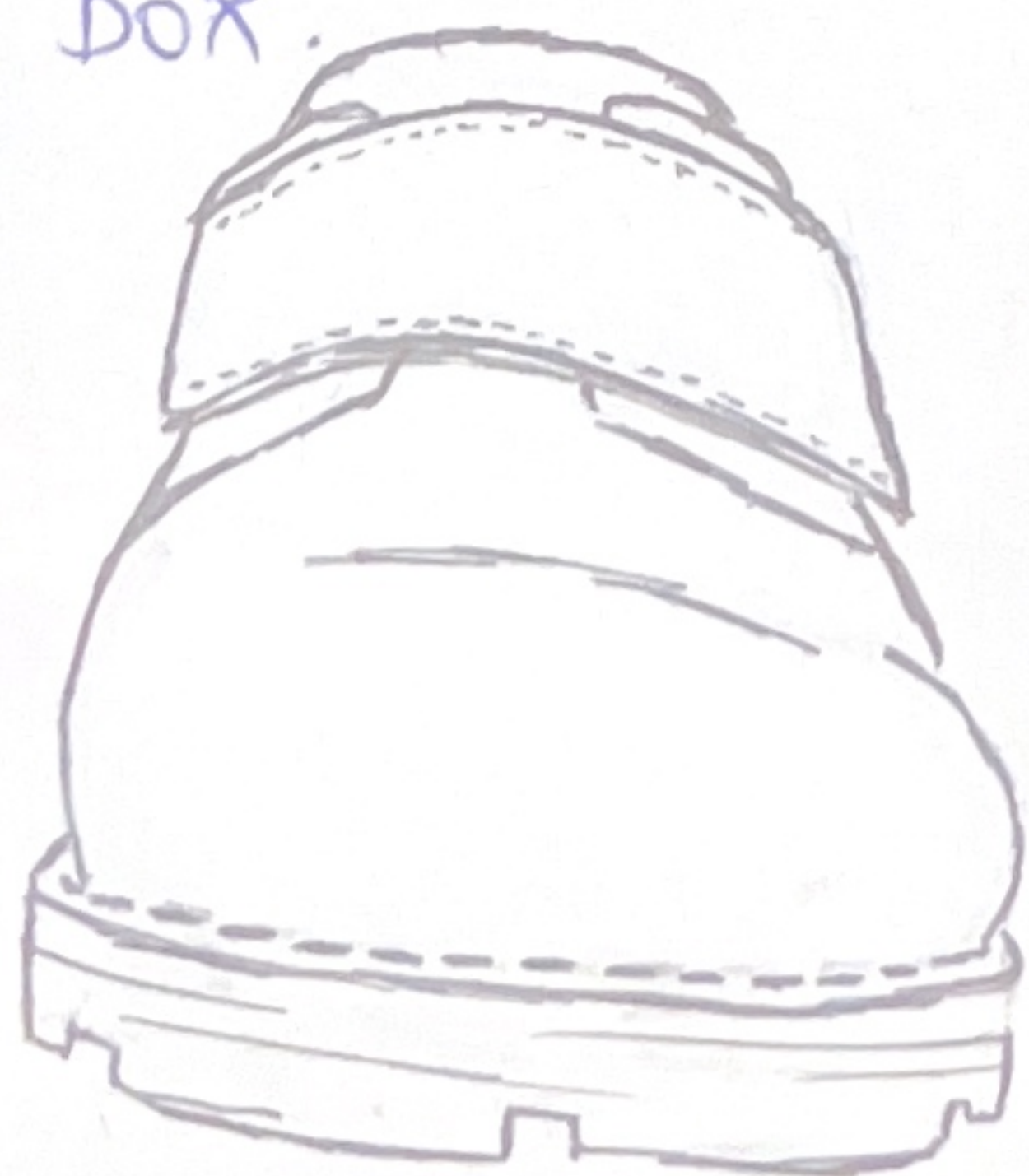
SIDE VIEW (INSIDE)

- Large velcro strap for a more firm grip and easy use.
- Lower heel for stability.



FRONT VIEW

- Roomy toe box.



BACK/REAR VIEW

