

The background image shows a dark, moody landscape with layered rock formations and a small stream. The text is overlaid on this scene.

The marks of time and  
the eternity of nature

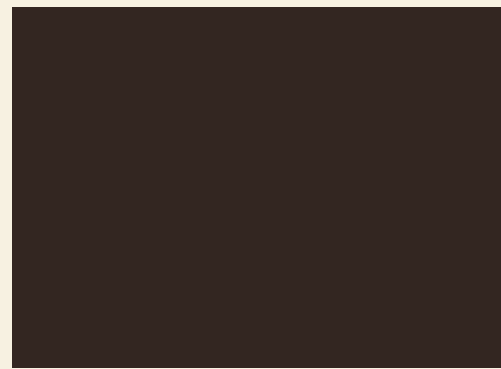
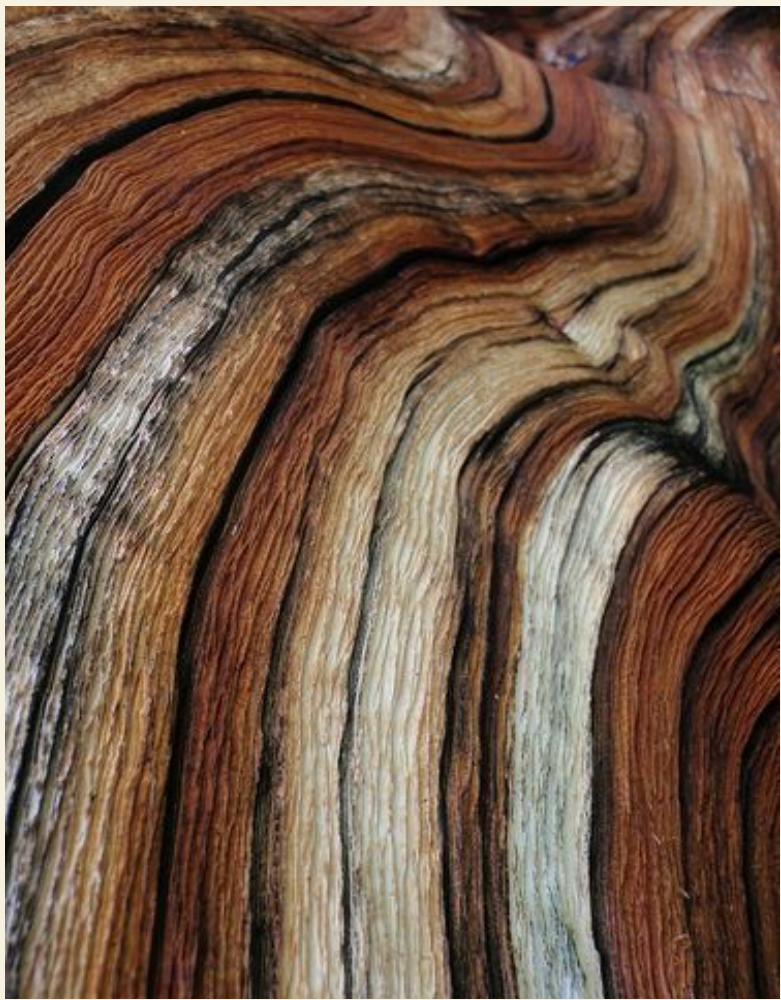
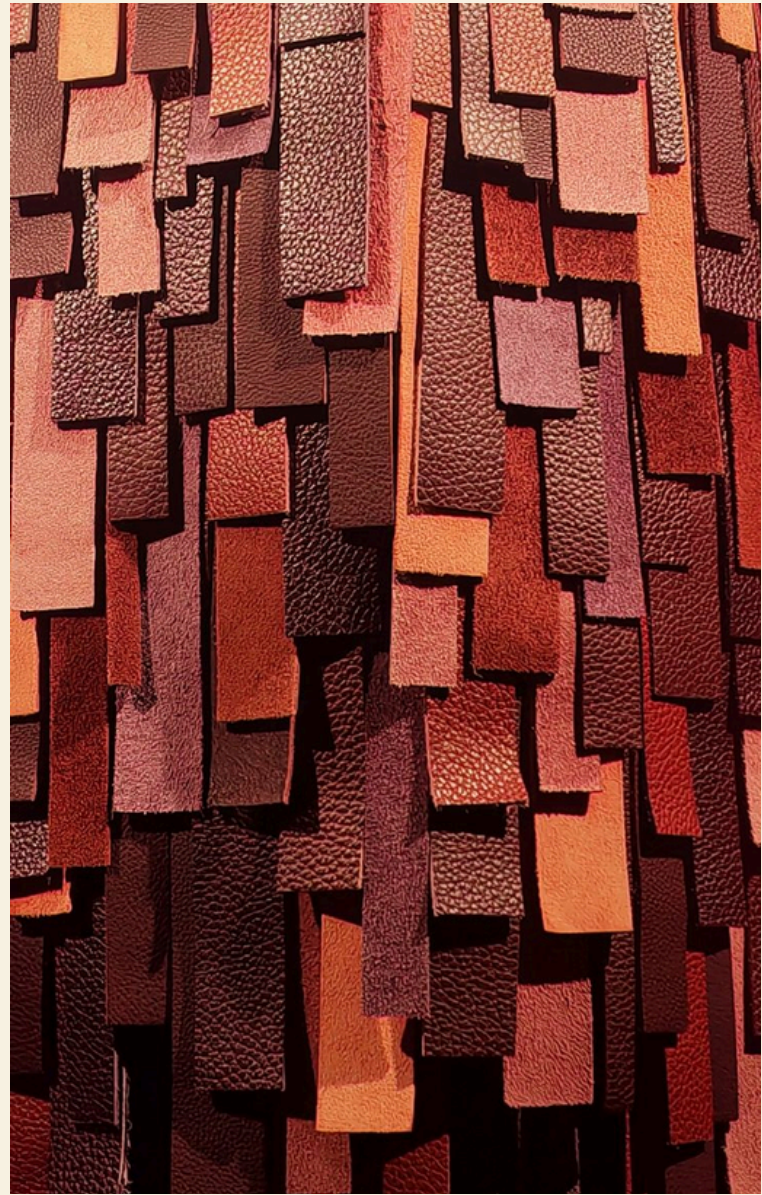
**I am Mariana Monteiro, I was born in São Paulo, Brazil. I am a fifth-semester Fashion Design student at the Centro Universitário de Belas Artes.**

**I value more sustainable and conscious fashion. Based on my learning and studies at university, I seek to make at least a small difference in the world and in the consumer mindset of the population.**

**I'm pursuing opportunities that will make this a reality, as well as showcasing the diverse beauty of Brazil to the world.**

**Thanks!**





# Chapada Diamantina

Chapada Diamantina is one of the main ecotourism destinations in Brazil, internationally recognized for its natural beauty.

Located in the center of the state of Bahia, it has an area equivalent to 32,000 km<sup>2</sup>, encompassing 24 municipalities, with a density of 11.48 inhabitants/km<sup>2</sup> (BRAZIL).

It is home to a wide variety of ecosystems, such as the Cerrado, Atlantic Forest, rocky fields and Caatinga, possessing an invaluable richness of fauna and flora, and offers trails with breathtaking views.

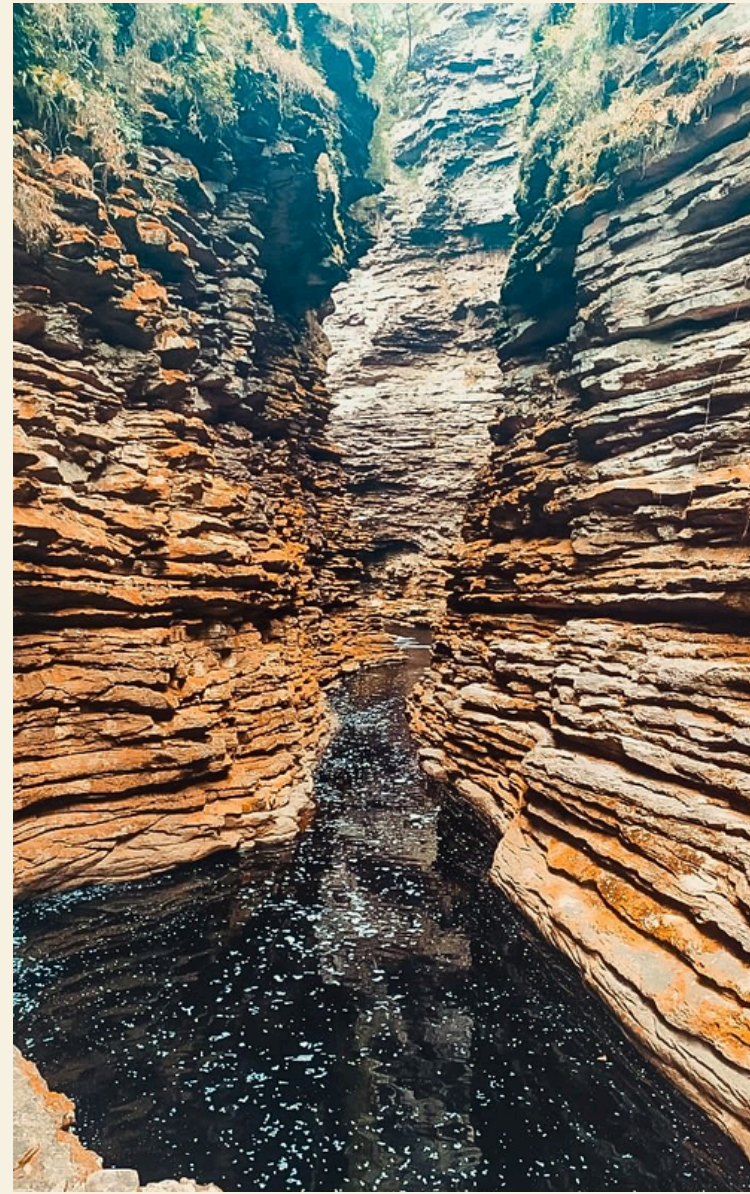
The cities still retain their colonial architecture today, a result of the diamond rush that transformed Brazil into the world's diamond producer in the early 20th century. This is how the Chapada Diamantina region got its name. Among all the beautiful sights, the one explored in depth in this work will be the Buracão Waterfall.



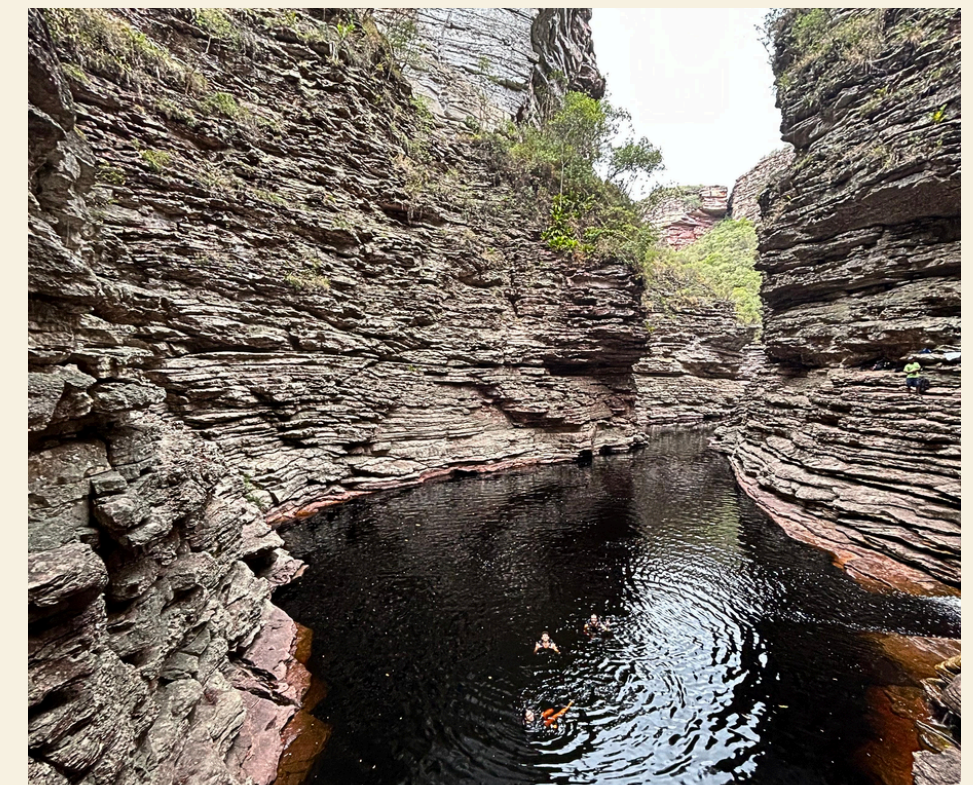
**Buracão Waterfall, located in the municipality of Ibicoara, is accessed via a trail, offering views from both above and below its 85-meter drop. To access it from below, one must swim through the canyon, past large, layered rock walls that create a corridor leading to the main pool, where one can finally see the incredible Buracão Waterfall, one of the most beautiful in the entire Chapada Diamantina region.**

**The water is recognized by its dark color, not because of pollution, as it is extremely clear, but because of the decomposition of organic matter, generating a chemical phenomenon that is very common in the waters of the region.**

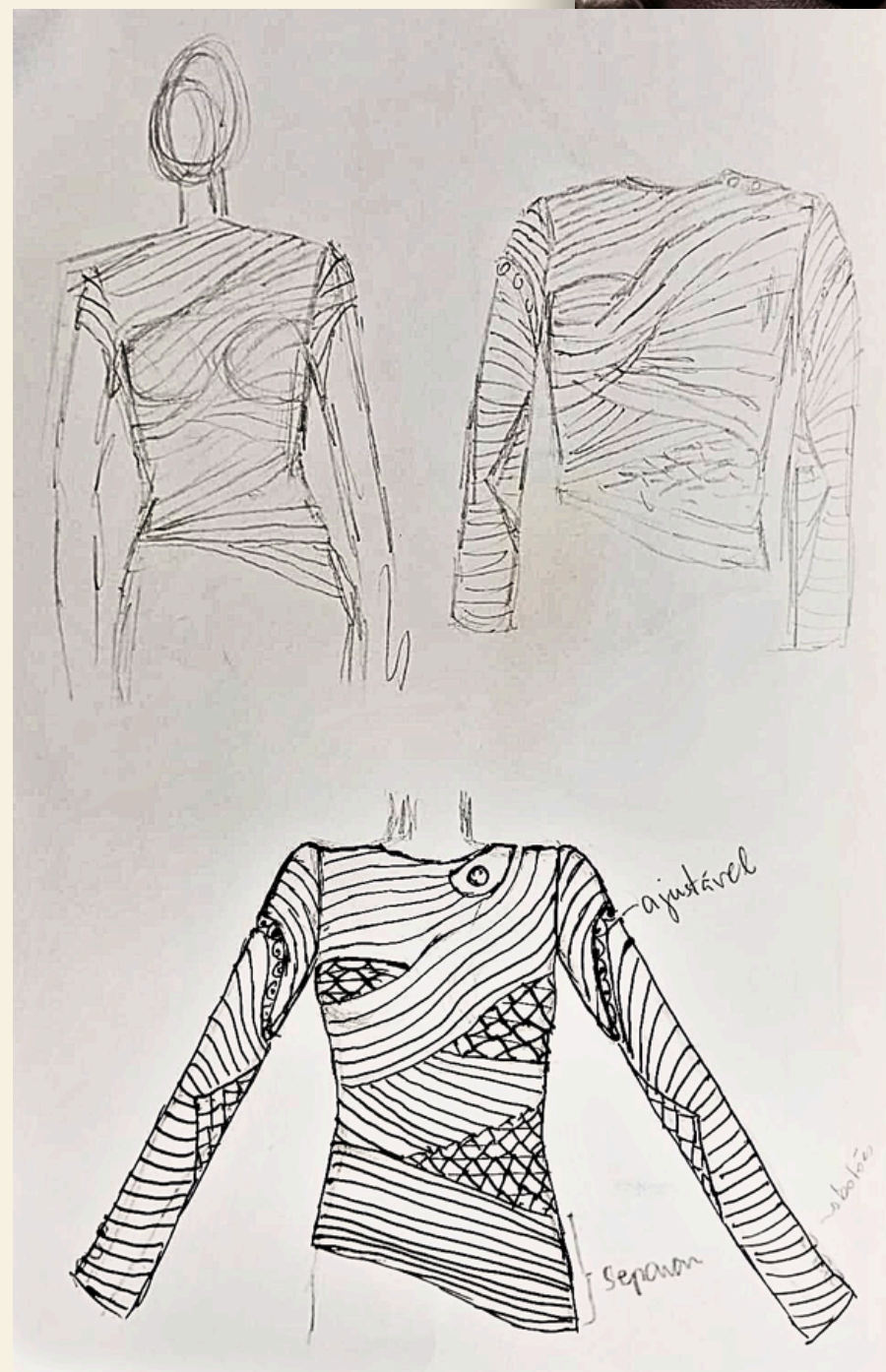
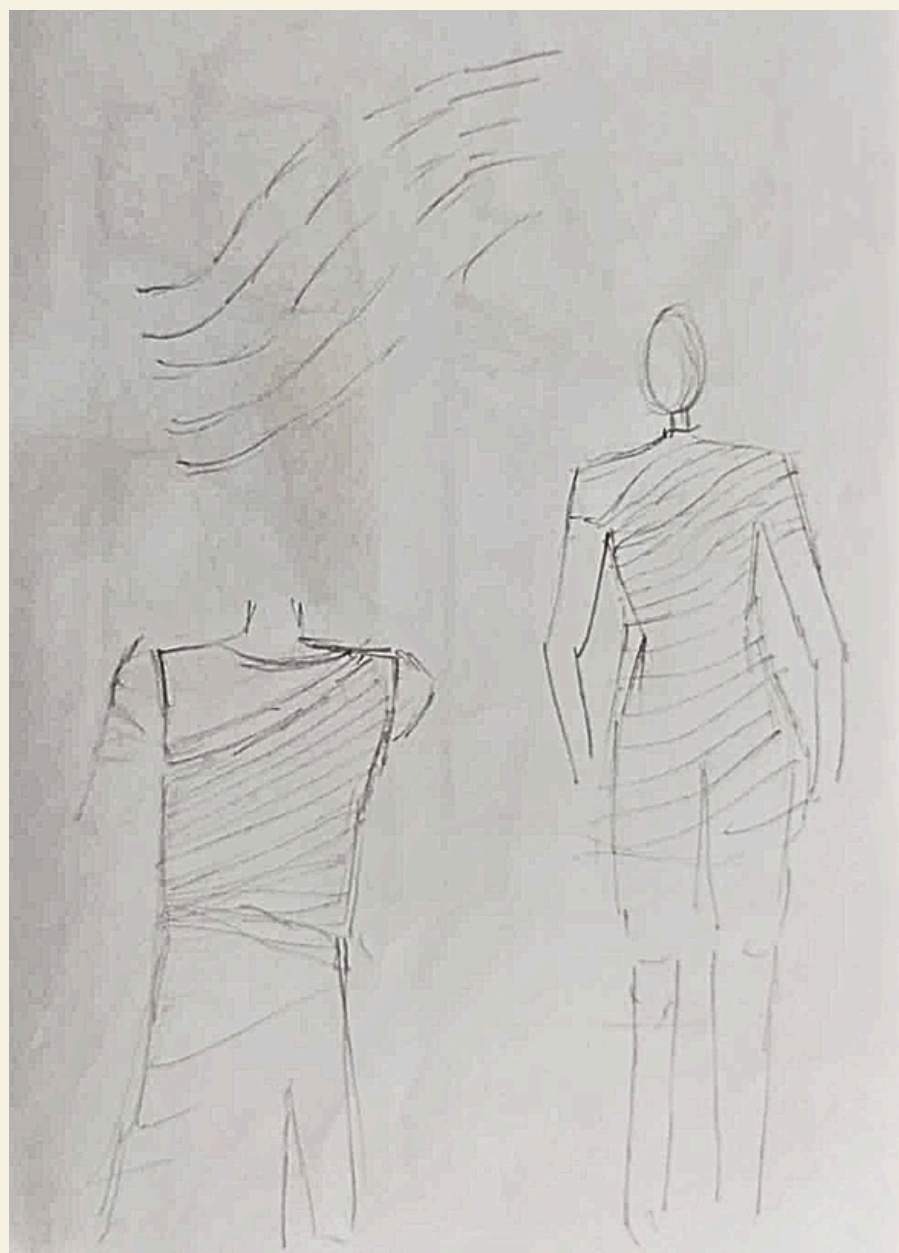
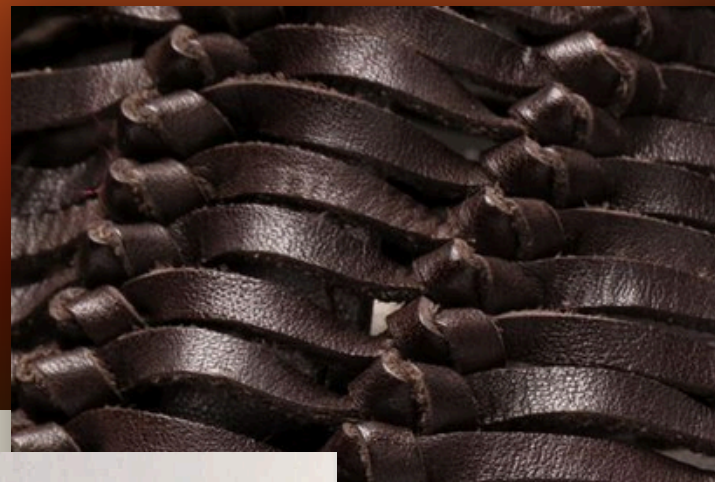
**Being underwater is very interesting because, due to its black color, when viewed from outside the water, the rest of the submerged body shows a gradient, with the part closest to the surface in a yellowish tone, which fades to orange, red, and finally to complete darkness.**



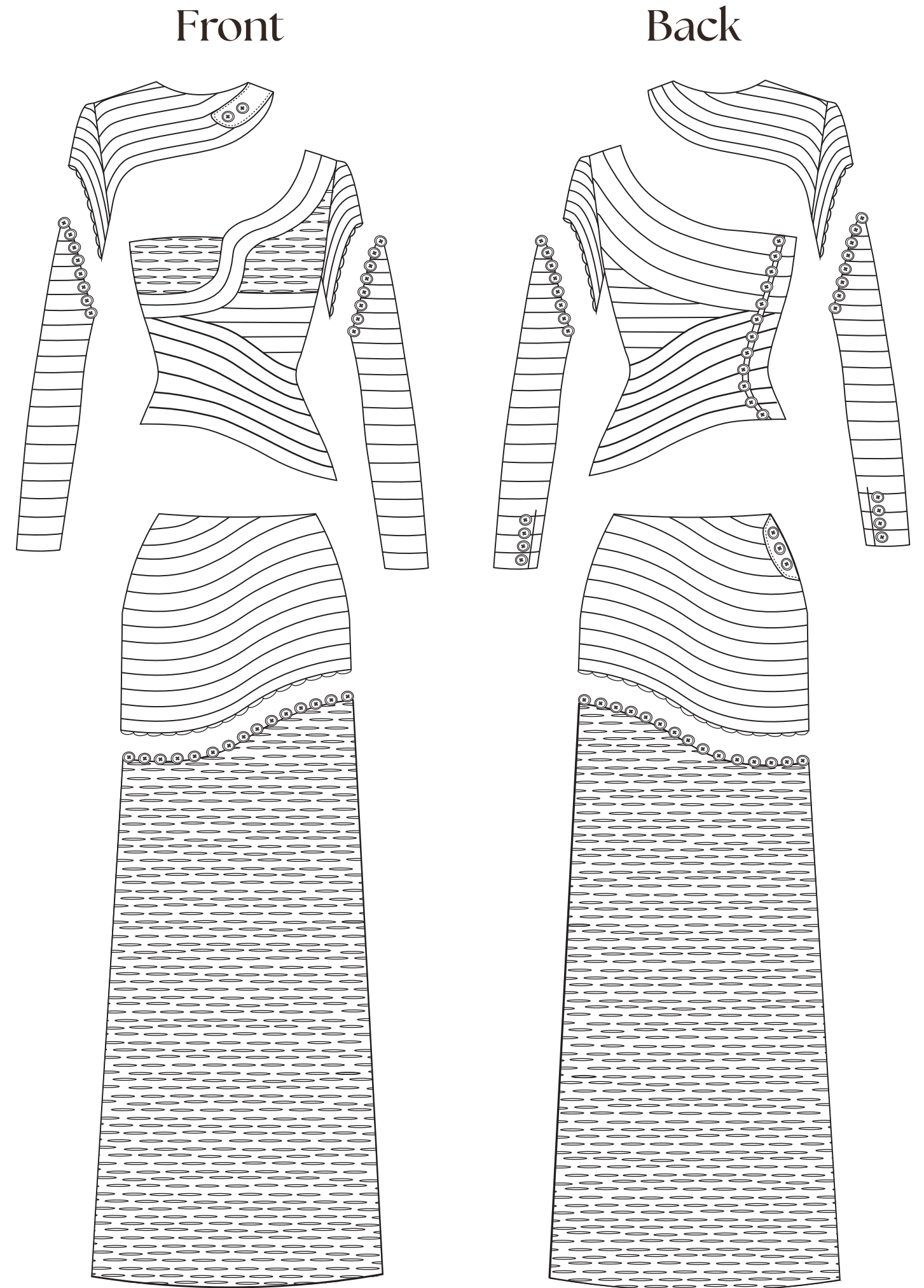
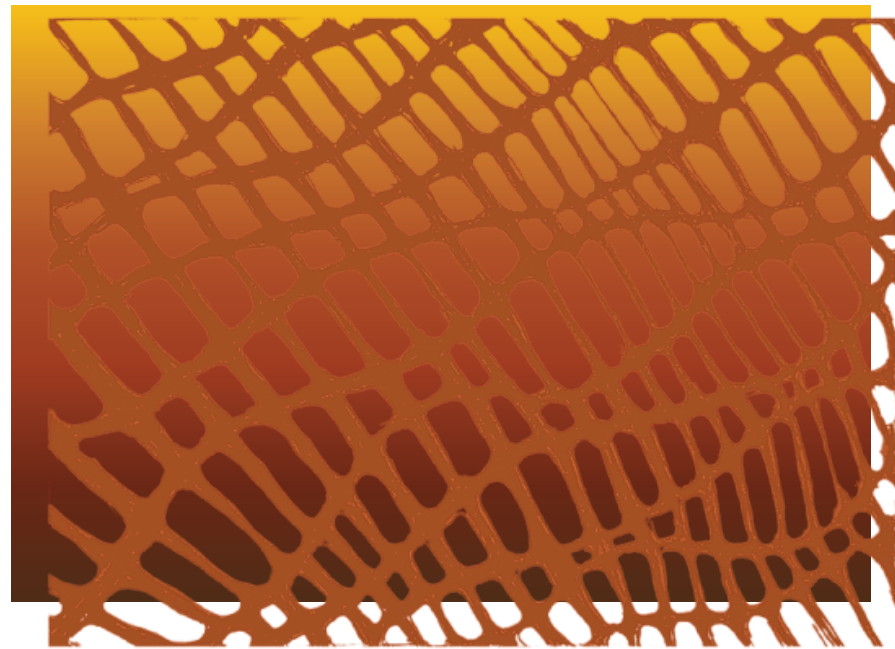
# WATER



# Sketches

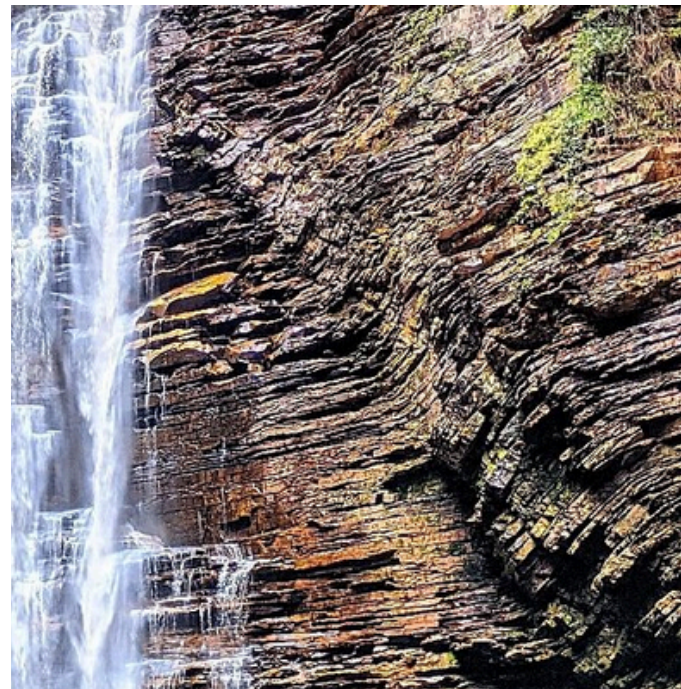
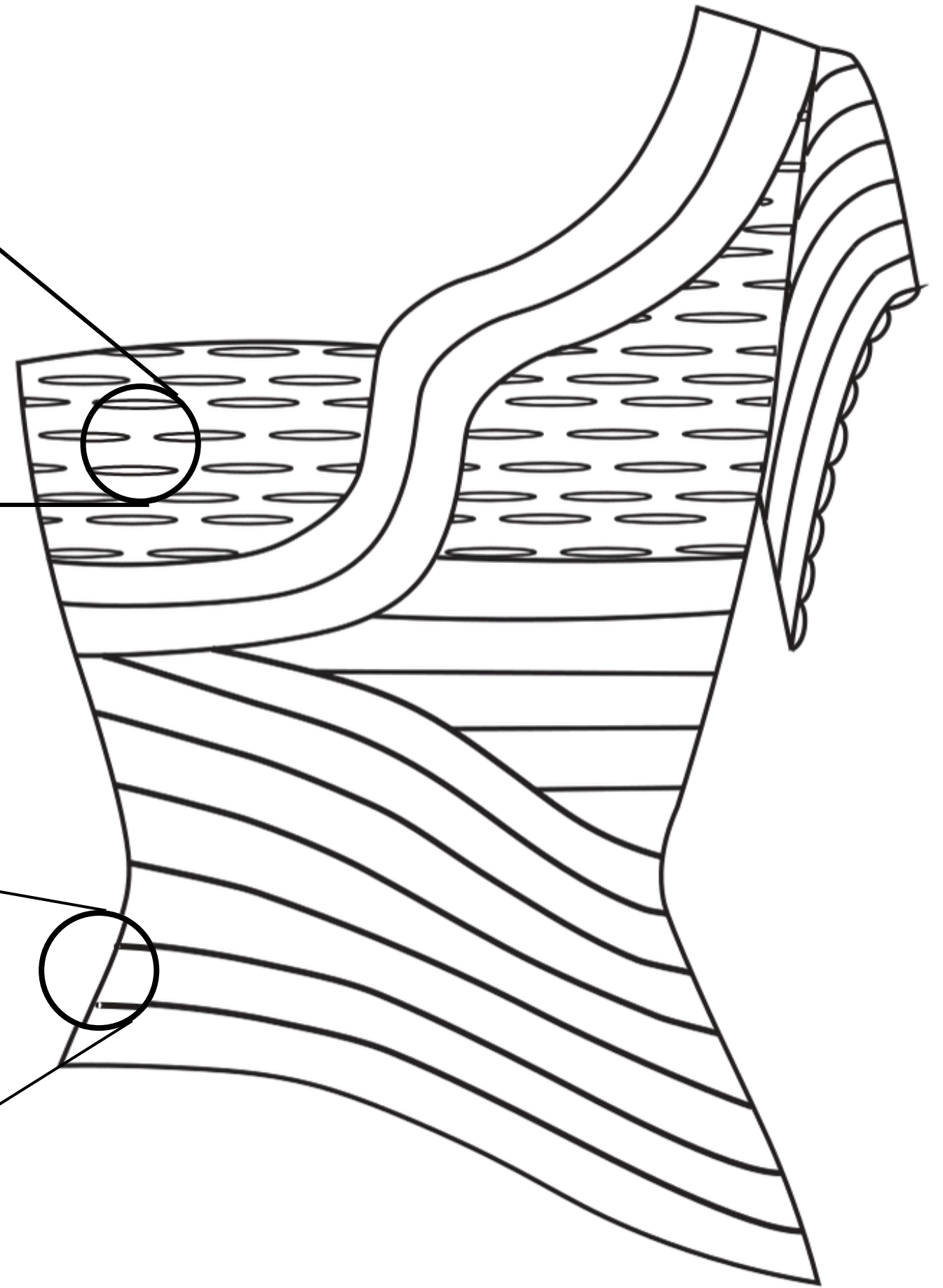
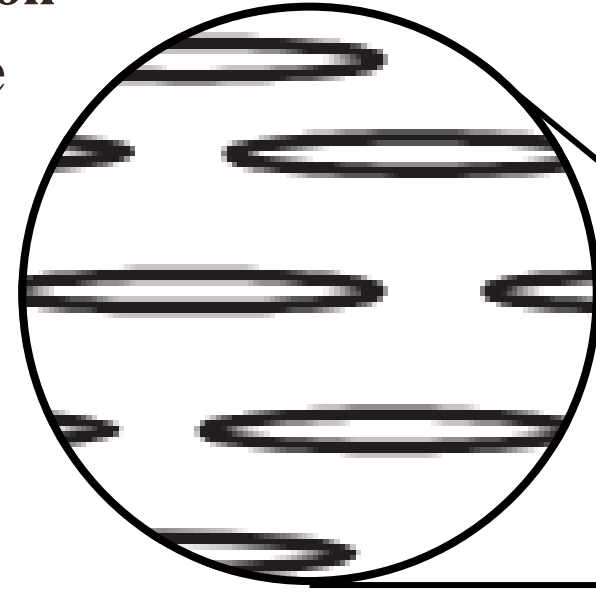
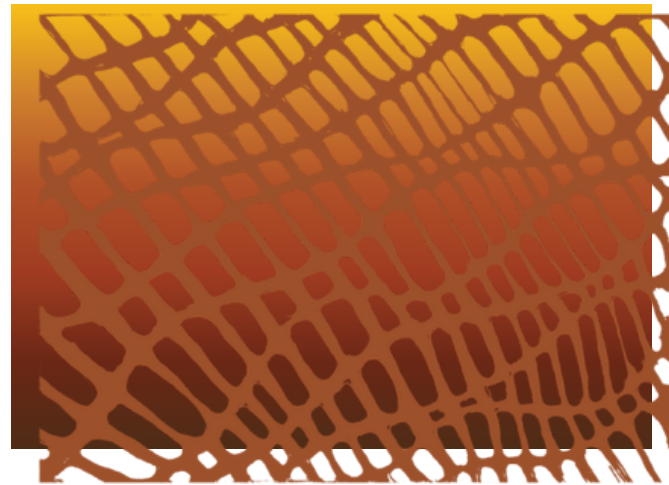


# My Look

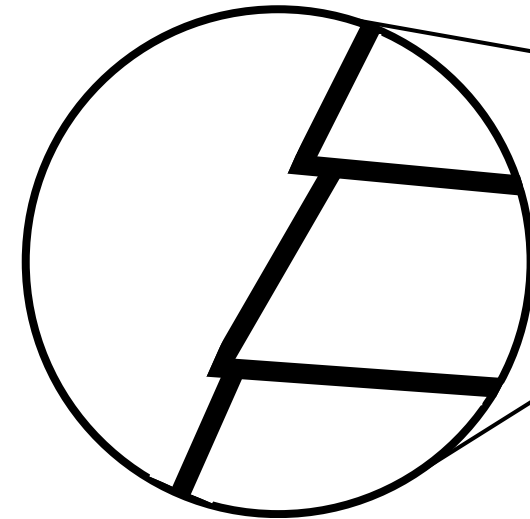


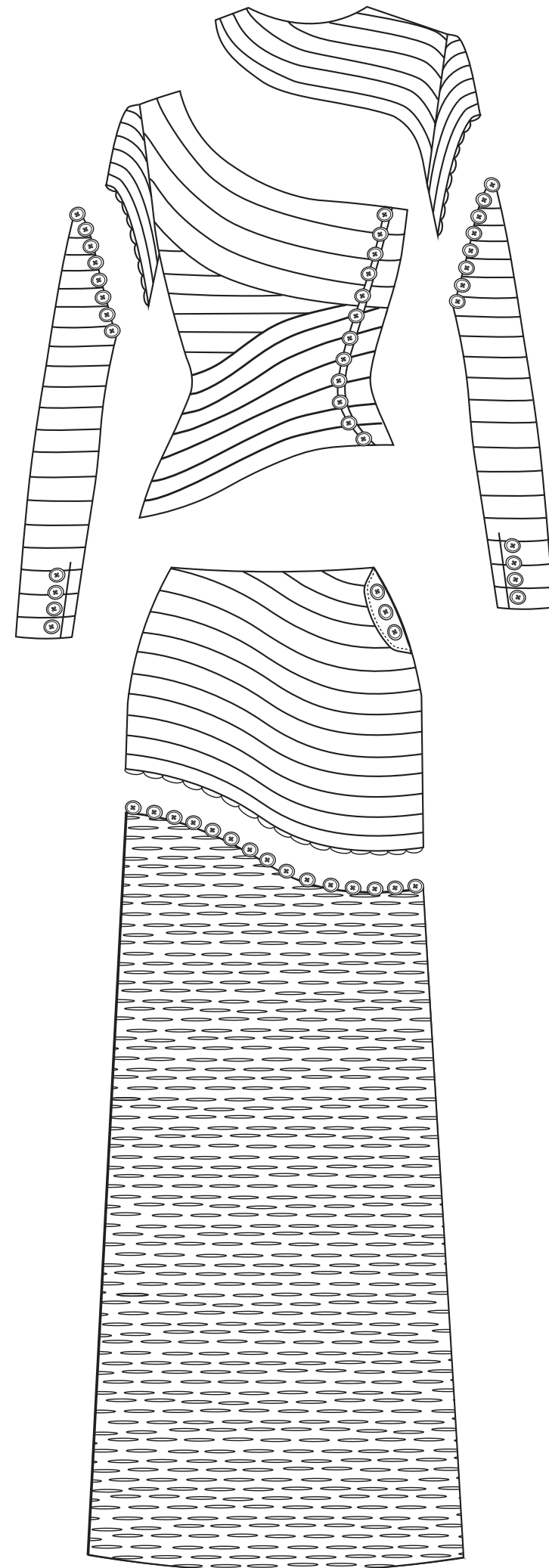
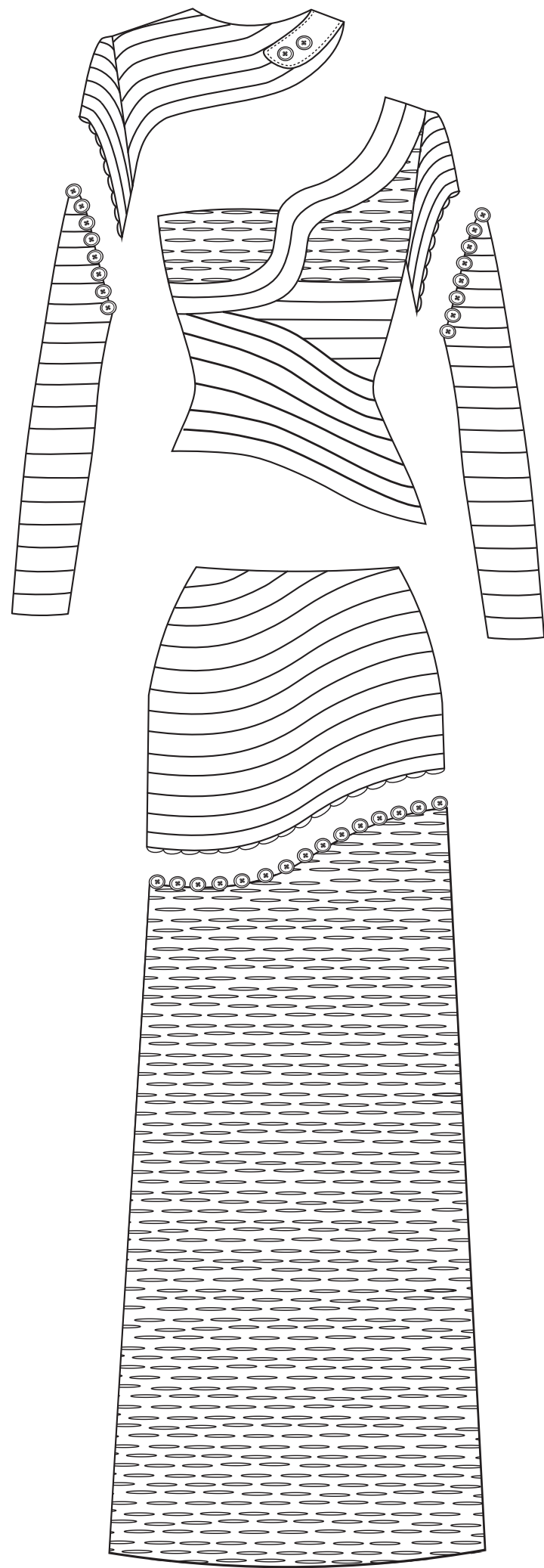


**Two layers of leather, one with cutouts to symbolize the stones and their erosion over time with water. The bottom layer represents water in a gradient.**



**Inspired by the grooves made by water, each strip is a layer of leather.**





**Versatile pieces, as the tops can be worn with long or short sleeves, just like the skirt, adapting to the weather and different occasions, creating various outfit possibilities by buttoning or unbuttoning them.**

# Materials

- Bovine leather
- Elastic
- Button
- Satin
- Sewing thread
- Leather dye
- Shoulder pad

