

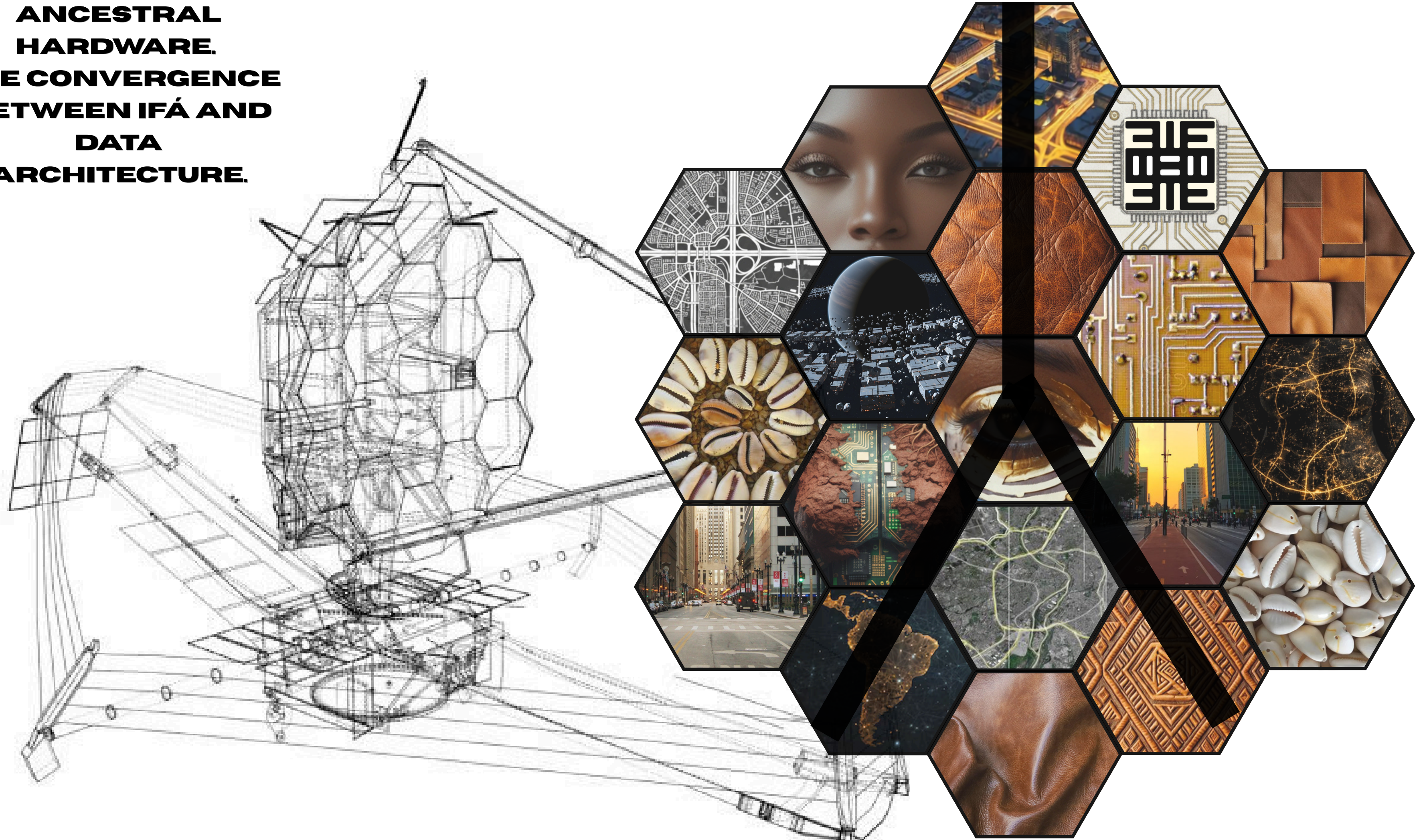
ANCESTRAL CARTOGRAPHY

**ODU - DATA AND THE BIOMETRY OF
LEATHER.**



AMANDINKRA

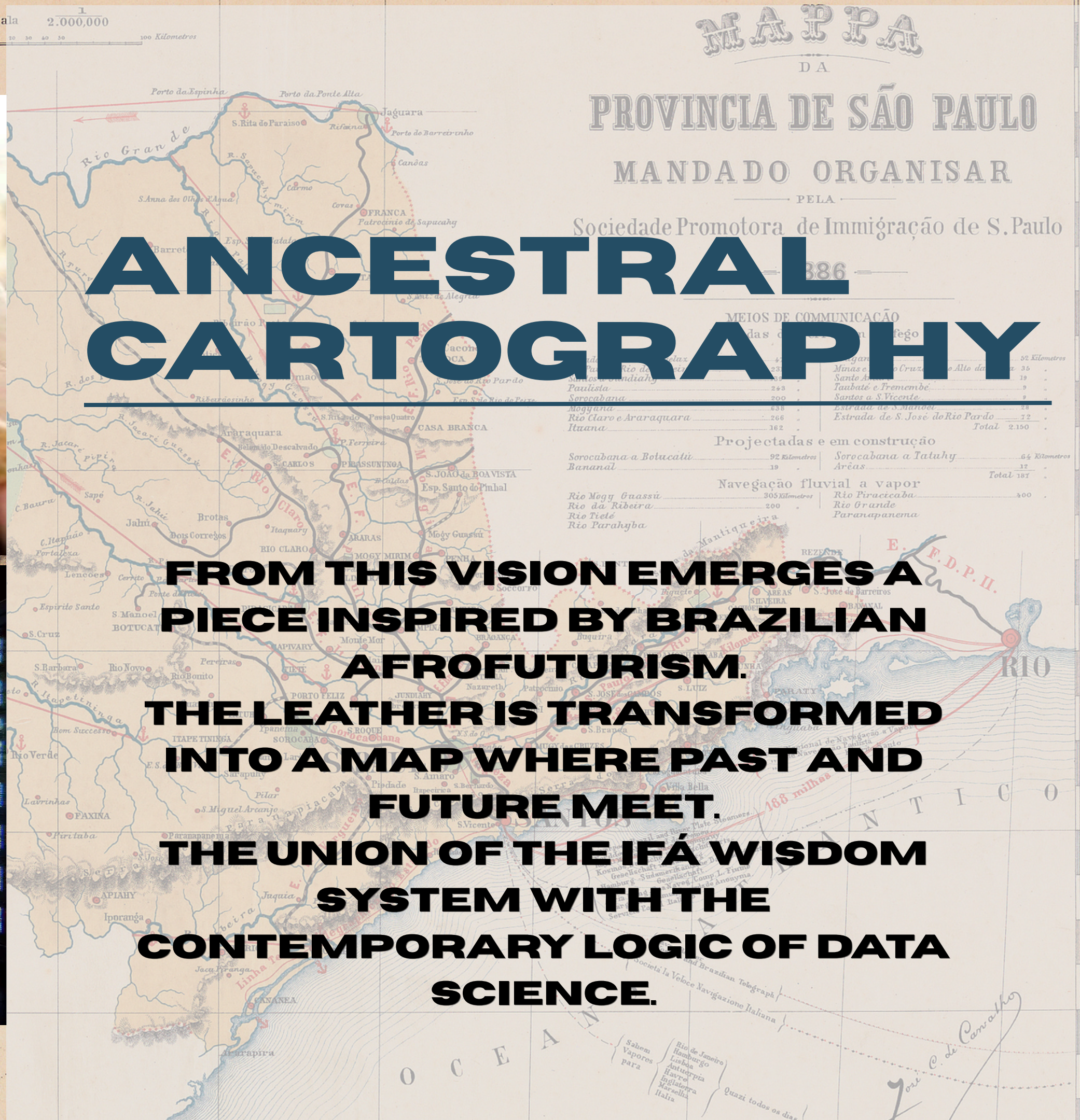
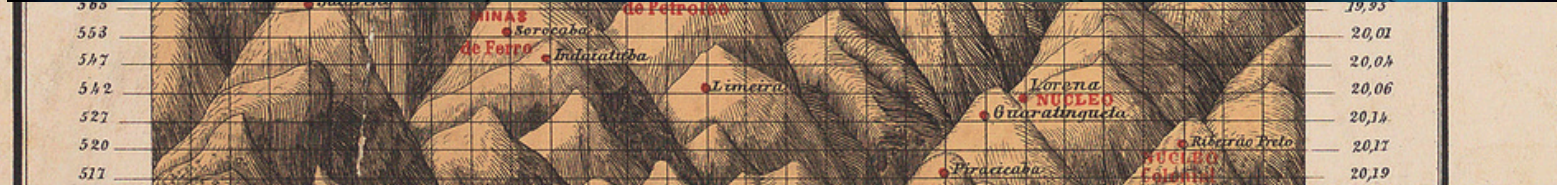
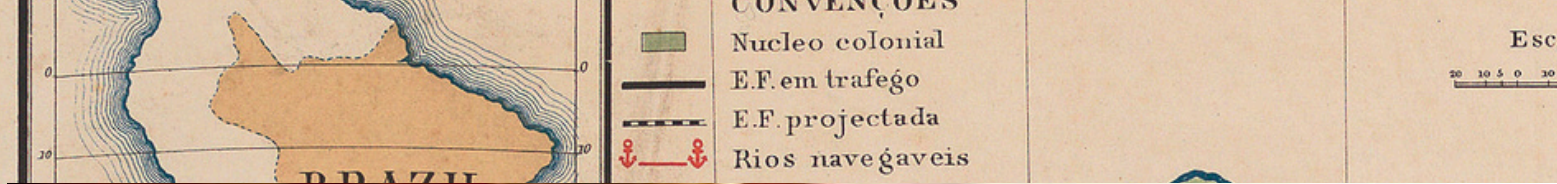
**ANCESTRAL
HARDWARE.
THE CONVERGENCE
BETWEEN IFÁ AND
DATA
ARCHITECTURE.**



**THIS PROJECT PROPOSES NATURAL
LEATHER AS A LIVING ARCHIVE OF
MEMORY.**

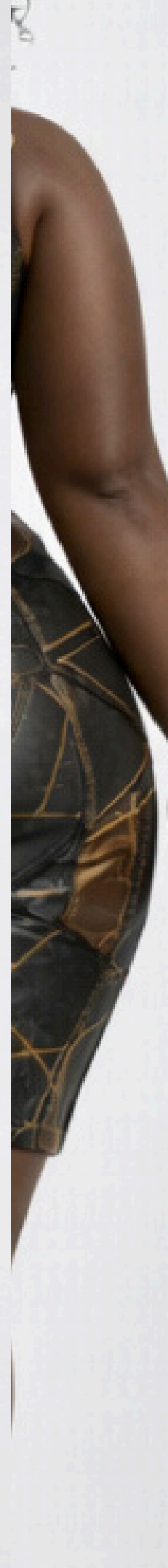
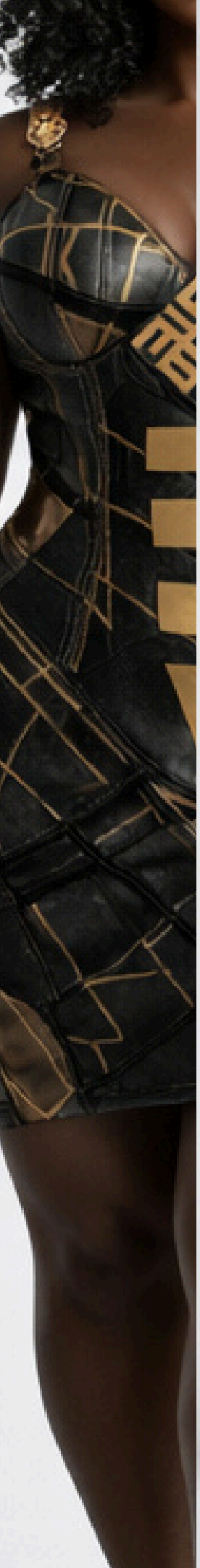


**IT HOLDS MARKS, TEXTURE, AND TIME.
EACH SURFACE BEARS SIGNS OF LIFE.**



ANCESTRAL CARTOGRAPHY

FROM THIS VISION EMERGES A PIECE INSPIRED BY BRAZILIAN AFROFUTURISM. THE LEATHER IS TRANSFORMED INTO A MAP WHERE PAST AND FUTURE MEET. THE UNION OF THE IFÁ WISDOM SYSTEM WITH THE CONTEMPORARY LOGIC OF DATA SCIENCE.





THE SURFACE WILL FEATURE MARQUETRY IN BLACK LEATHER OF VARIOUS SHAPES AND TEXTURES TO REPRESENT THE NEIGHBORHOODS OF SÃO PAULO. THE GRAND AVENUES APPEAR AS GOLDEN LINES MADE WITH LEATHER PAINT MIXED WITH REFLECTIVE PIGMENT, RESEMBLING ELECTRONIC CIRCUITS, AND STITCHED WITH THREAD TO REPRESENT THE STREETS. THESE LINES STRUCTURE THE BODY AND DEFINE A SILHOUETTE, ENVELOPING IT LIKE A CLOAK THAT INDICATES PATHS AND WISDOM. I MADE A CREPE FABRIC TO HAVE A PERFECT SILHOUETTE ON A PLUS-SIZE BODY AND DID SOME SCALE TESTS ON A SMALL MANNEQUIN BY GLUING ON THE PRINTED MAP OF SÃO PAULO.

