

# ABSTRACT DEPLETED TERRAIN

OMER CARMELI

SHENKAR COLLEGE





I'm 25 years old and a graduate of the Fashion Design Department at Shenkar. I grew up around a zoo, where my mother worked as the Head of the Education Department. This experience shaped my perspective on nature and the relationship between humans and the environment.

I aspire to create timeless garments through refined silhouettes, rich textures, craftsmanship, and material exploration, believing that longevity is one of the most meaningful forms of sustainability.

Through my work, I seek to deepen the connection between people, the materials they wear, and the natural world from which they originate.

Abstract Depleted Terrain began with the work of Edward Burtynsky, whose aerial photographs document landscapes transformed by mining, pollution, industrial waste, and resource extraction.

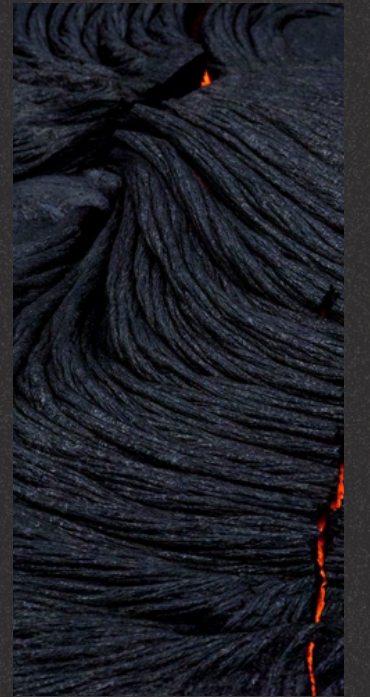
His images reveal an unsettling contrast between abstract beauty and environmental degradation, exposing the lasting traces of human intervention on the natural world. They became the starting point for an exploration of the relationship between landscape, natural resources, and industry.



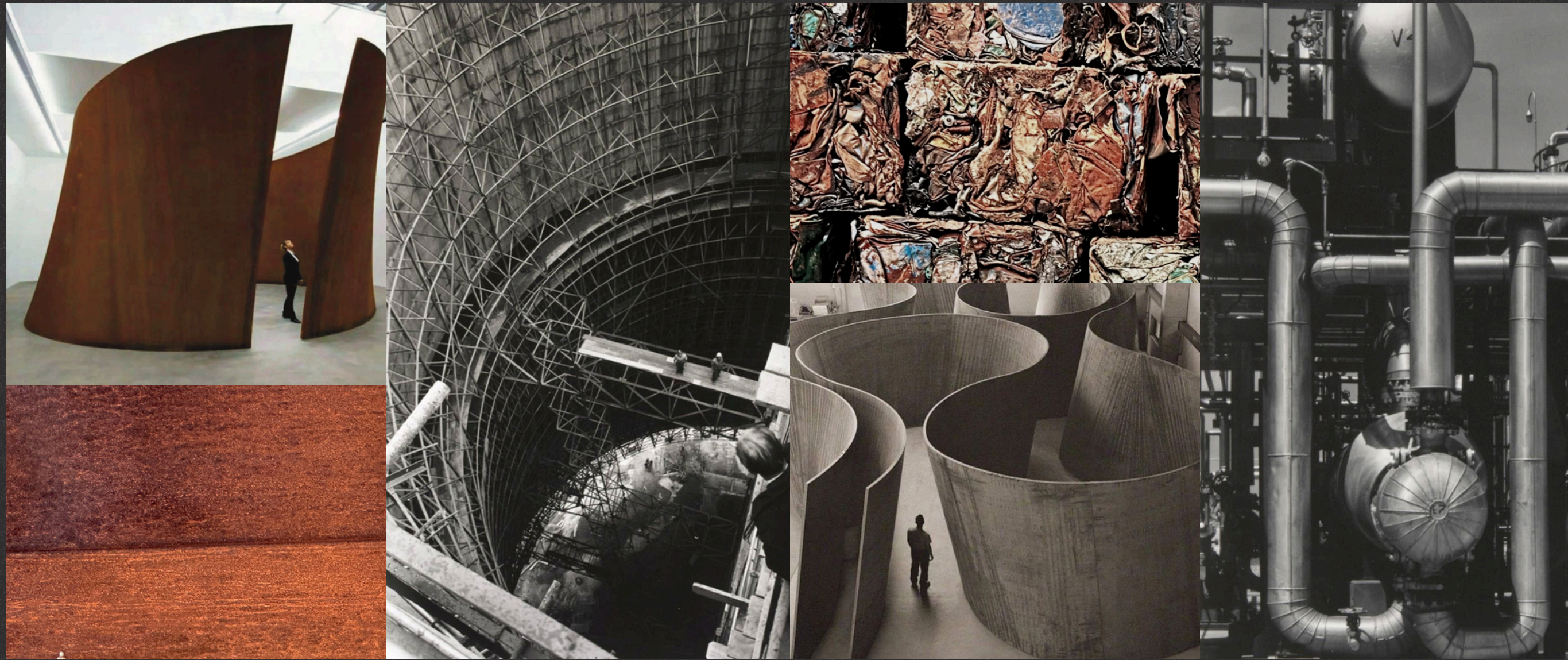
EDWARD BURTYNSKY, TAILINGS POND #2, 2018



EDWARD BURTYNSKY, SALT PAN #24, 2016.



The industrial landscape is shaped by constant extraction, production, and disposal. Compressed waste, rusted metal, and vast infrastructures reveal the scars made by a system built on endless accumulation.



RICHARD SERRA (SCULPTURE); EDWARD BURTYNSKY / URBAN MINES, DENSIFIED OIL DRUMS #4, 1997.

Their monumental scale diminishes the human figure, emphasizing the overwhelming power of industry.

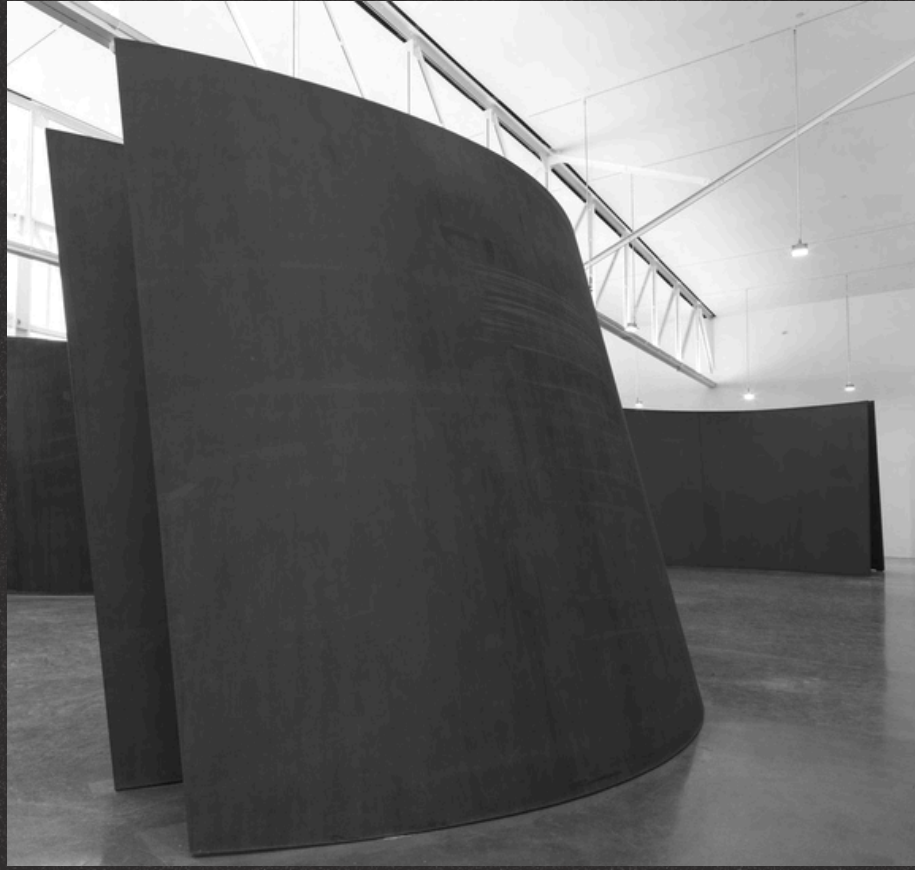
Compressed waste bales are the central inspiration behind the design. Their dense, heavy forms, created by pressing discarded materials into compact blocks, influenced the look's sculptural silhouette, compressed construction, textured surface, and sense of weight.



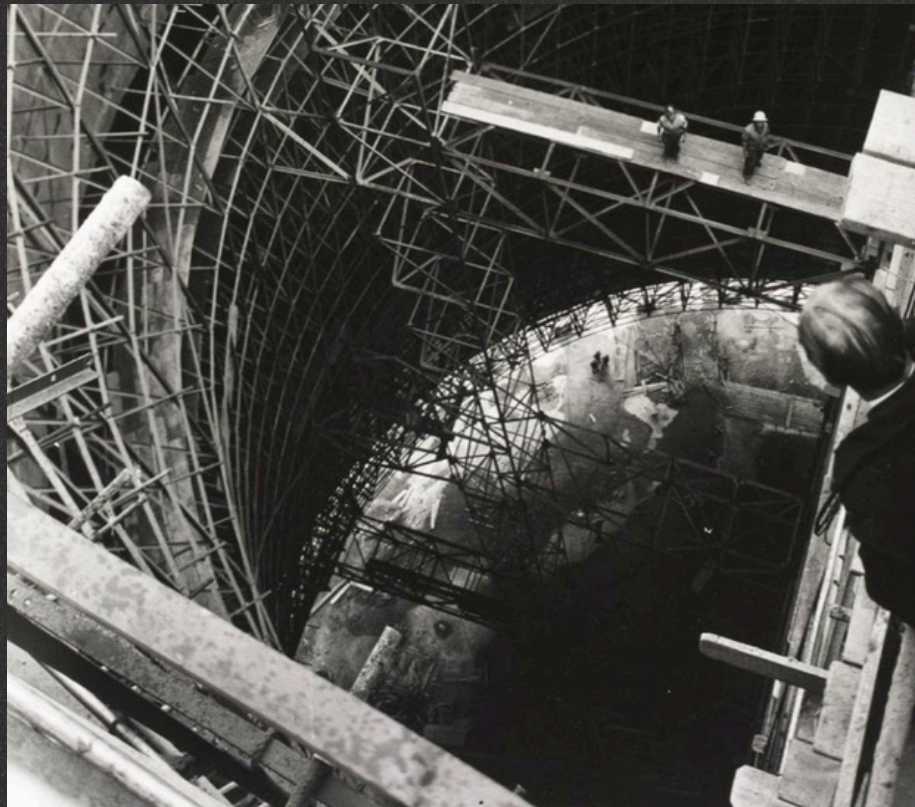
EDWARD BURTYNSKY / URBAN MINES,  
DENSIFIED OIL DRUMS #4, 1997.







RICHARD SERRA



Initial design sketches







Rust  
effect  
finish

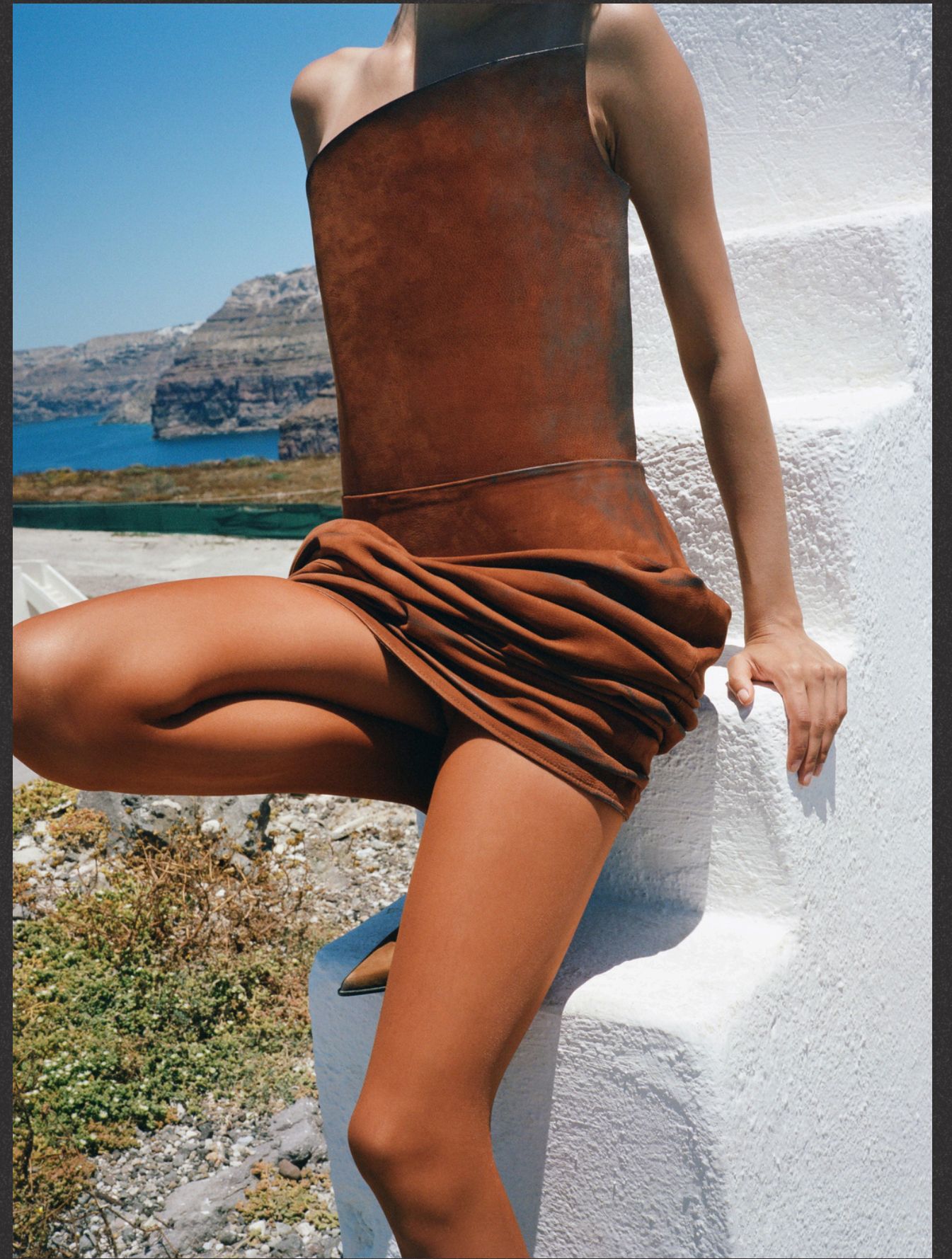


toil - checking garment construction



Dyeing  
the tights  
to match the  
rust color









OMER CARMELI

CARMOMER@GMAIL.COM

+972-546833351

CREDITS

PHOTOGRAPHER | TAL BRUSHEL

HAIR & MAKEUP | GITLA BRUSHEL

MODEL | ANNA SOPILKO

SPECIAL THANKS

GRADUATION PROJECT MENTORS | YOSSI KATZAV & JACQUELINE SOFER

