



# ASSEMBLED MOTION

"Where the street becomes  
language"

# **STORY INSPIRATION**

**I wasn't raised in silence; I was raised in motion.**

**My childhood had a soundtrack: engines rumbling, basslines vibrating through metal frames, conductors calling out destinations like spoken poetry. The streets didn't just shape me, they dressed me. Every matatu ride, every corner, every passing glance became part of my visual language. I learned early that identity is not fixed, it is assembled. A leather jacket passed down through generations, oversized silhouettes worn like armor, and clothing shaped by survival became symbols of self-expression and presence.**

**Growing up surrounded by matatu culture, graffiti, movement, and fearless individuality inspired me to transform these experiences into wearable pieces that reflect resilience, identity, and urban expression.**

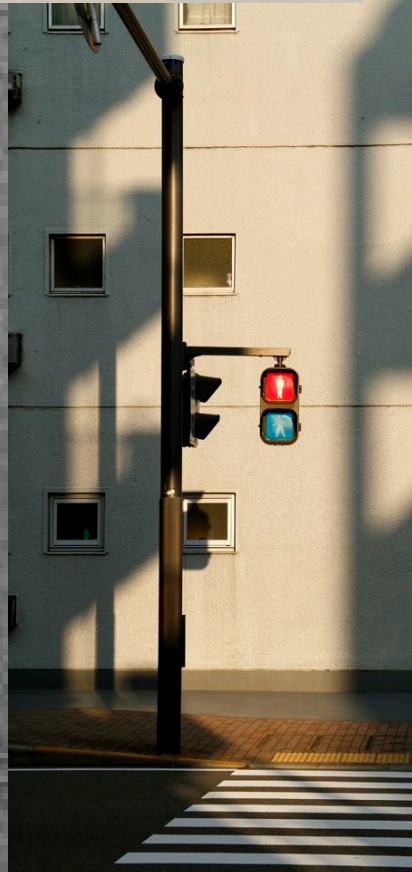
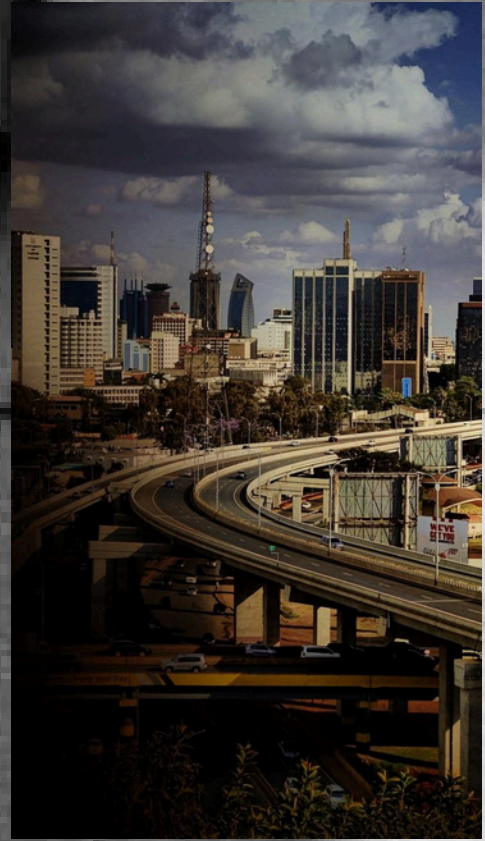


# **CONCEPT**

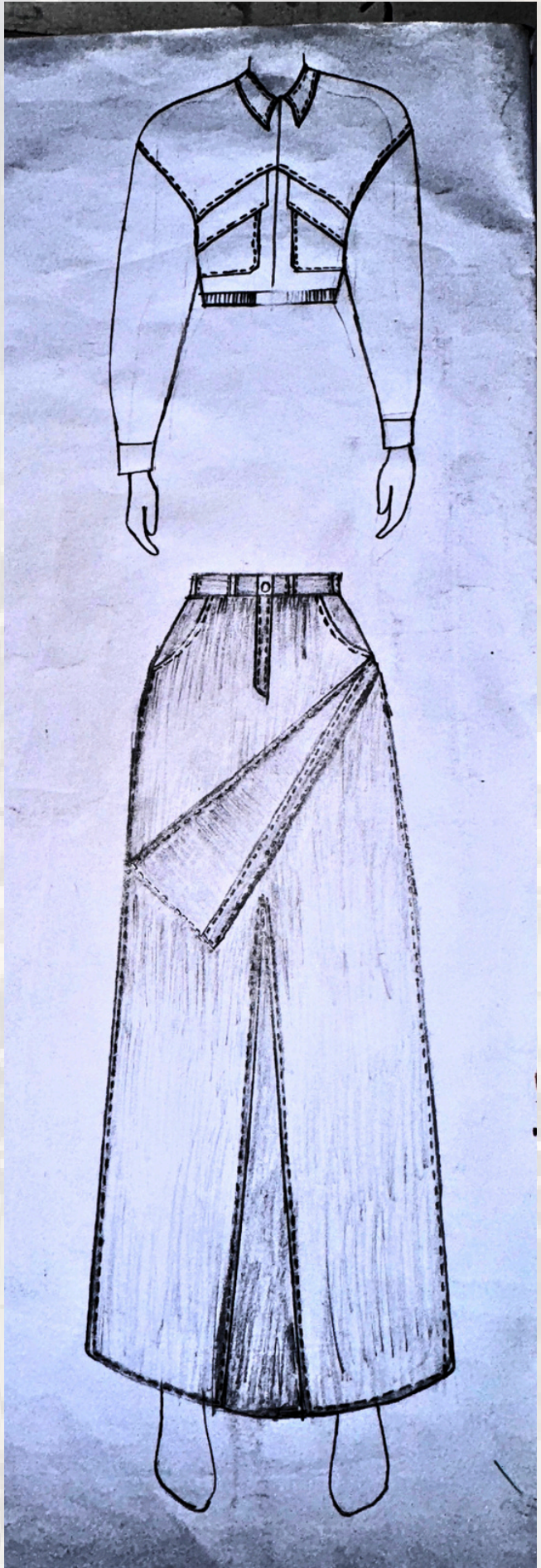
**“Assembled Motion” is a leather collection inspired by the visual energy of Nairobi’s streets and matatu culture. The collection explores how fashion becomes a language of survival, confidence, rebellion, and identity within urban spaces.**

**Through structured leather panels, oversized silhouettes, visible stitching, and asymmetrical construction, the garments reflect movement, protection, and self-expression. Each piece represents the experience of navigating the city while unapologetically claiming space and visibility.**

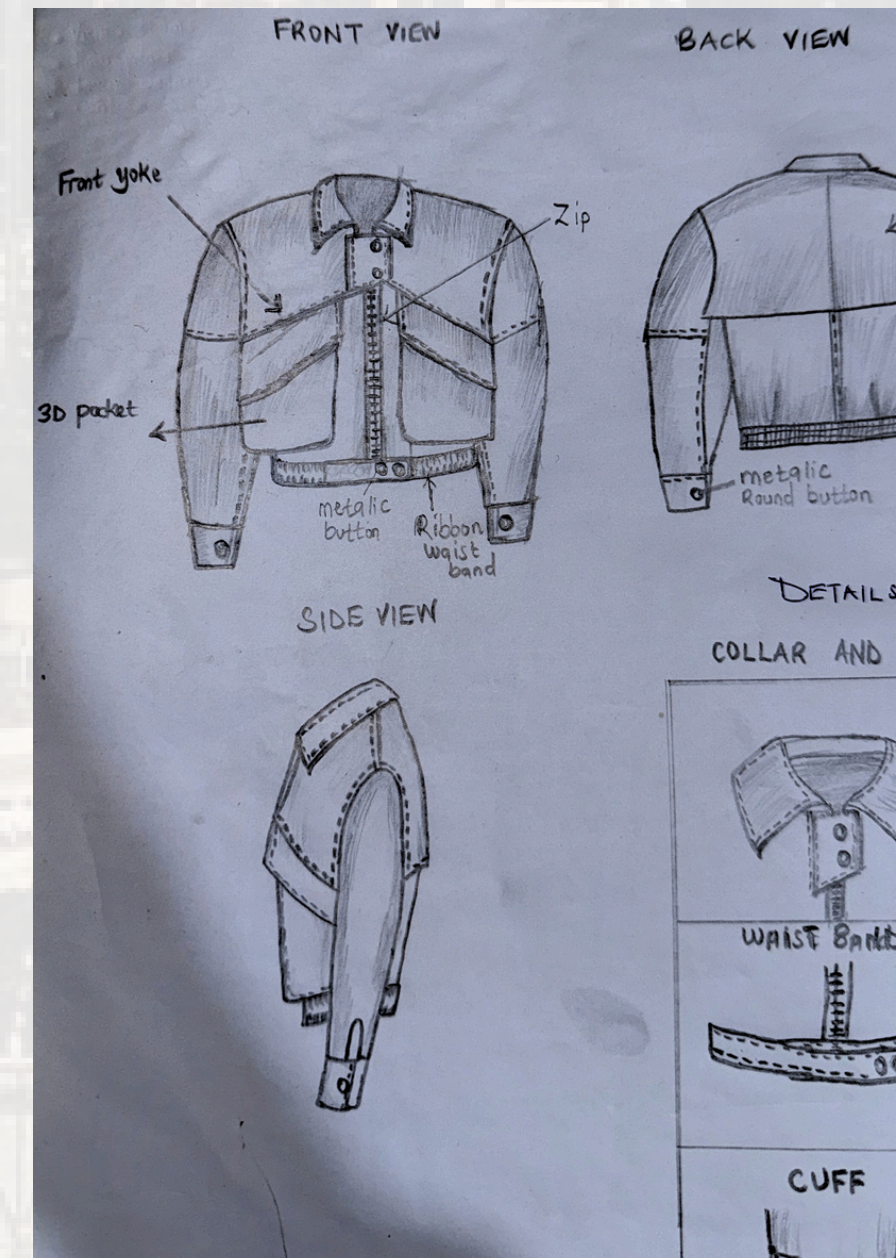
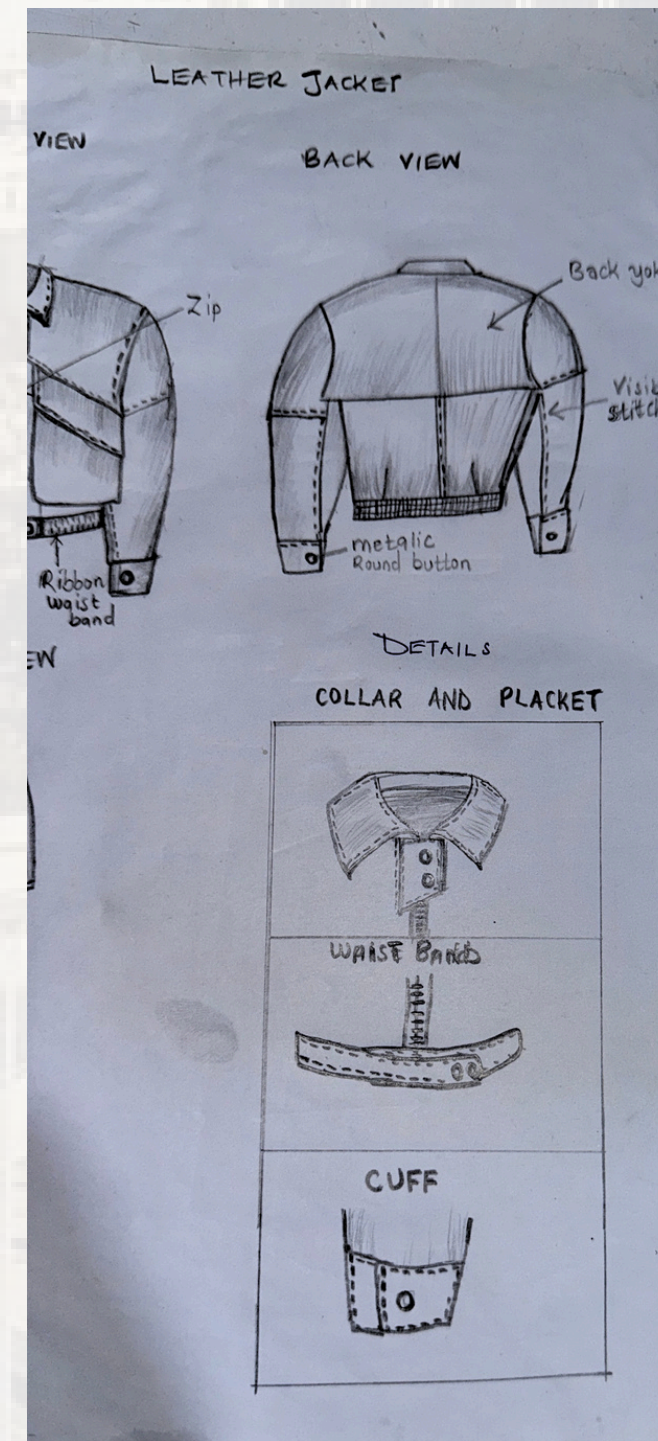
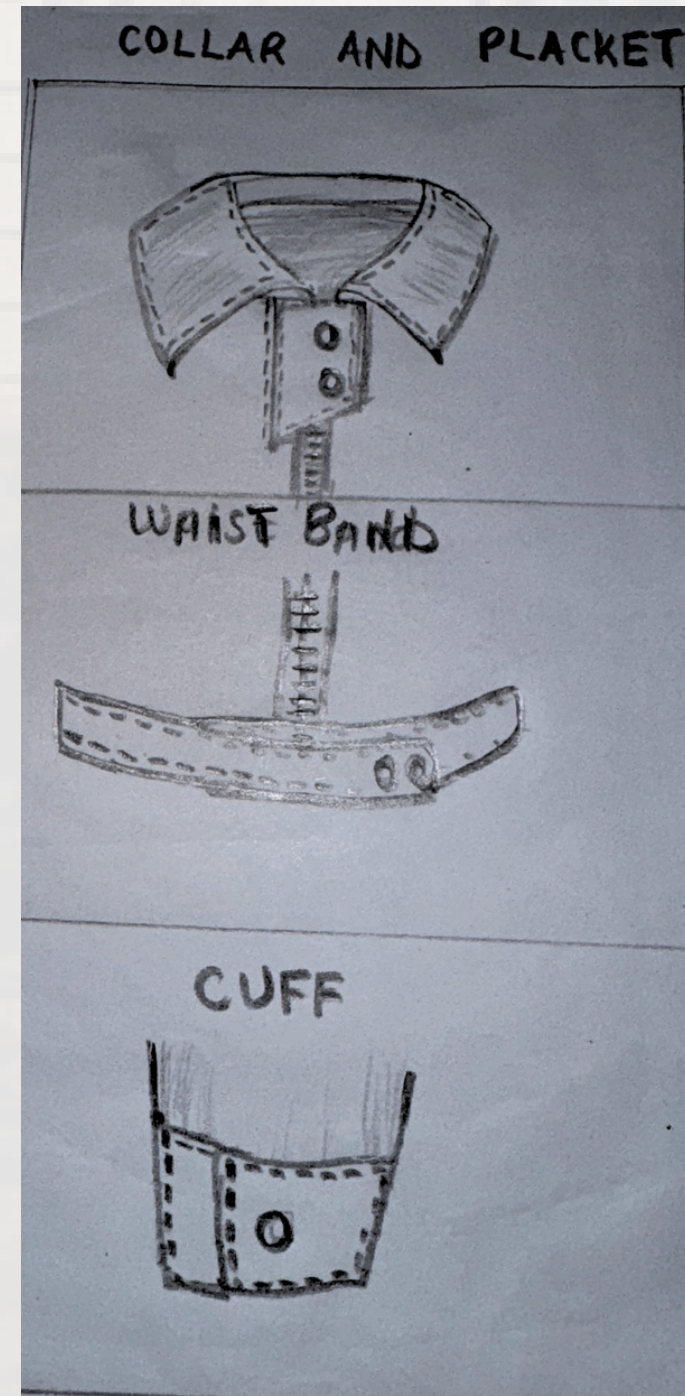
# MOODBOARD



# DESIGN



# SKETCHES



# **COLOR & MATERIALS**

## **COLOR PALETTE**

- **Black**
- **Deep green**
- **Charcoal grey**
- **Metallic silver**

## **MATERIALS**

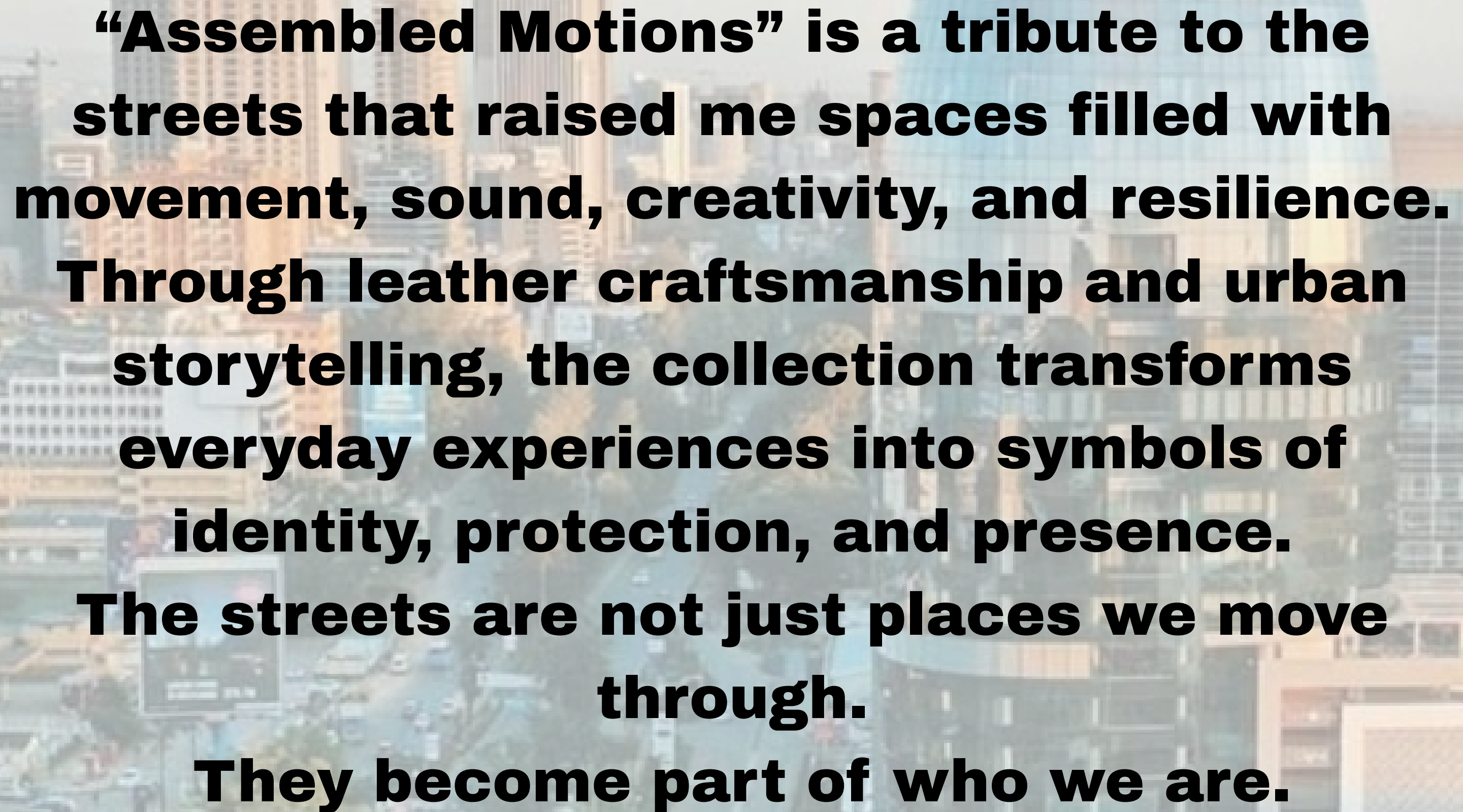
- **Leather**
- **Upcycled fabric**
- **Metal hardware**

**The materials reflect the raw textures of the city metal, movement, graffiti, and worn surfaces shaped by everyday urban life.**

# TARGET AUDIENCE

**This collection is designed for individuals who use fashion as a form of identity and self-expression.**

**It speaks to people connected to urban culture, creativity, individuality, and fearless personal style.**

An aerial view of a city skyline, featuring a prominent blue dome-shaped building in the center. The text is overlaid on the image in a bold, black, sans-serif font.

**“Assembled Motions” is a tribute to the streets that raised me spaces filled with movement, sound, creativity, and resilience. Through leather craftsmanship and urban storytelling, the collection transforms everyday experiences into symbols of identity, protection, and presence. The streets are not just places we move through. They become part of who we are.**

**THANK YOU**

