

“FROM NATURE TO FLAME”

GOURD SHOULDER BAG

NATURE. CURVE. IGNITION.

Inspired by the organic curves of the gourd and the nostalgic charm of matchsticks, this sculptural shoulder bag blends natural forms with handcrafted detail. Woven stripes represent ignition, energy and transformation.

INSPIRATION



GOURD MATCHSTICKS

COLOR PALETTE



MULTIPLE ANGLES



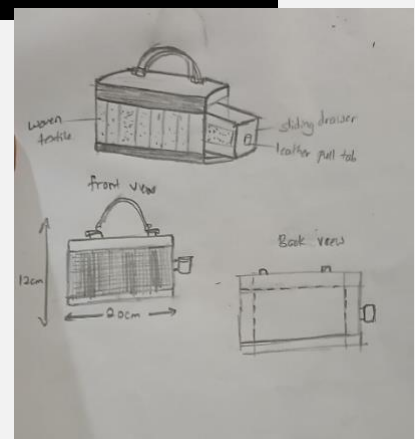
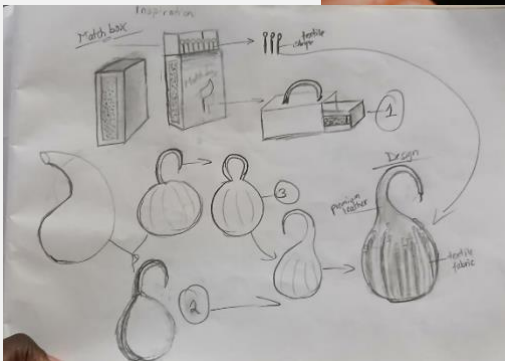
FRONT VIEW SIDE VIEW



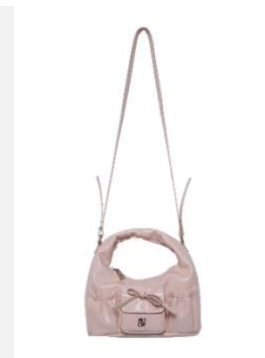
TOP VIEW



SOURCE OF INSPIRATION



MOODBOARD



Design Concept: “From Nature to Flame”

This collection is a contemporary exploration of how ordinary objects can be transformed into meaningful fashion accessories through storytelling, craftsmanship, and material innovation. Inspired by the organic beauty of the gourd and the symbolic function of the matchbox, the designs merge nature and utility into wearable statement pieces for fashion-conscious individuals who appreciate uniqueness and artistic expression.

The journey began with the gourd, a natural object traditionally associated with growth, nourishment, and handcrafted culture. Its smooth curves, rounded volume, and flowing stem inspired the sculptural silhouette of the shoulder bag. The continuous curved handle mimics the vine-like connection of the gourd, creating a seamless form that feels organic, soft, and fluid. This natural influence introduces a sense of calmness, authenticity, and timeless beauty into the design.

In contrast, the matchbox became a symbol of ignition, transformation, and human interaction. Small yet powerful, the matchbox represents the spark of creativity and the idea that simple objects can hold strong meaning. Its geometric form inspired the structured box bag, while the sliding drawer mechanism was translated into a functional fashion element that allows the bag to open like a real matchbox. This playful yet refined feature brings innovation and interaction into everyday wear.

To connect both inspirations visually, woven stripe textile details were incorporated into the leather surfaces. These stripes abstractly represent rows of matchsticks, introducing rhythm, texture, and movement while adding warmth and artisanal character. The combination of leather and woven textile creates a balance between structure and softness, modernity, and tradition.

The collection is designed for individuals who seek more than just accessories. It is created for fashion-conscious people who value originality, craftsmanship, and designs that tell a story. The bags function as everyday wearable pieces while maintaining a sculptural and artistic identity, allowing the wearer to express individuality through contemporary handcrafted fashion.

DESIGN ONE



GOURD SHOULDER BAG

NATURE. CURVE. IGNITION.

Inspired by the organic curves of the gourd and the nostalgic charm of matchsticks, this sculptural shoulder bag blends natural forms with handcrafted detail. Woven stripes represent ignition, energy and transformation.

INSPIRATION



GOURD MATCHSTICKS

COLOR PALETTE

- OLIVE GREEN
- BEIGE
- DEEP RED
- FOREST GREEN
- NATURAL BEIGE

DETAILS



WOVEN STRIPE TEXTILE DETAIL SMOOTH ZIPPER CLOSURE SCULPTURAL CURVED HANDLE

MULTIPLE ANGLES



FRONT VIEW SIDE VIEW 3/4 VIEW BACK VIEW



TOP VIEW BOTTOM VIEW

DIMENSIONS (CM)



29 22 14

MATERIALS

- PREMIUM LEATHER
- WOVEN STRIPE TEXTILE



NATURE INSPIRED CRAFTED TEXTURE IGNITE YOUR STORY

DESIGN PROCESS

GOURD SHOULDER BAG

NATURE. CURVE. IGNITION.

1. INSPIRATION

Inspired by the organic curves of the gourd and the nostalgic charm of matchsticks, this sculptural shoulder bag blends natural forms with handcrafted detail.

Woven stripes represent ignition, energy and transformation.



GOURD



MATCHSTICKS

3. MOODBOARD

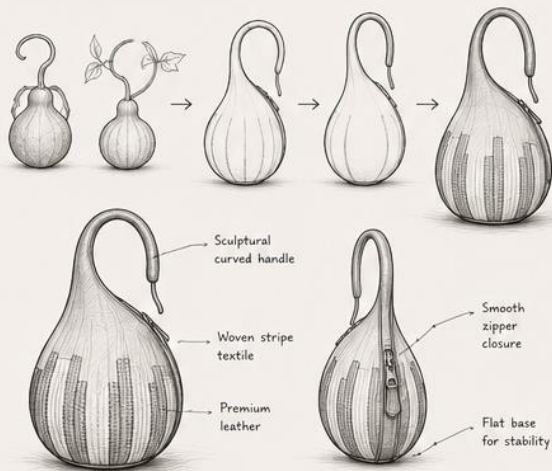


NATURAL • ORGANIC • TEXTURED • WARM • ARTISANAL • TRANSFORMATION



OLIVE GREEN • FOREST GREEN • DEEP RED • NATURAL BEIGE • WARM BEIGE • BRASS

5. DESIGN DEVELOPMENT



DESIGN INTENT

The Gourd Shoulder Bag celebrates the beauty of natural forms and the warmth of handcrafted details. It transforms an organic shape into a functional fashion piece that is both artistic and timeless.

2. CONCEPT

A sculptural shoulder bag that takes inspiration from the natural form of a gourd.

Its curved handle flows seamlessly from the body, creating a harmonious silhouette.

Woven stripe detailing, inspired by matchsticks, adds texture, contrast and a story of ignition and transformation.

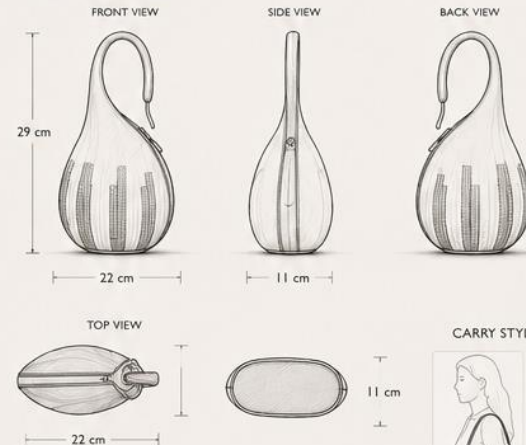


4. MATERIALS & DETAILS



- Woven stripe textile adds texture and rhythm
- Premium leather ensures durability and a refined finish
- Smooth zipper for secure closure
- Sculptural handle for comfort and unique silhouette
- Cotton or linen inner lining with pocket for organization
- Brass hardware for a timeless touch

6. MEASUREMENTS



SPECIFICATIONS	
Dimensions (H x W x D)	29 cm x 22 cm x 11 cm
Handle Drop	24 cm
Material	Premium Leather, Woven Stripe Textile
Lining	Cotton / Linen
Hardware	Brass
Closure	Zipper
Weight (Approx.)	450 g

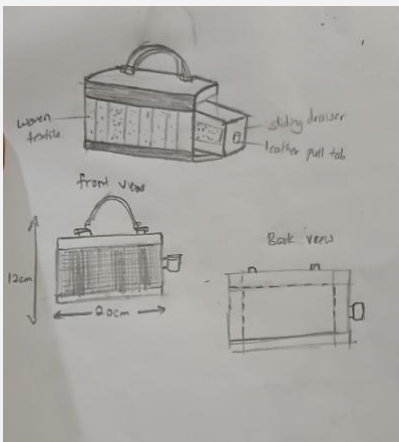
CARRY STYLES



SHOULDER CARRY

CROSSBODY CARRY

DESIGN TWO



DESIGN PROCESS

MATCHBOX BOX BAG

NATURE. CURVE. IGNITION.

1. INSPIRATION

Inspired by the simplicity and function of a matchbox, a symbol of ignition, energy and transformation. The design merges natural textures with geometric structure to create a functional bag that carries a story.



MATCHBOX



GOURD

2. CONCEPT

A box-shaped bag that reflects the clean geometry of a matchbox. The sliding drawer allows practical function while the woven stripe fabric and natural tones connect it to organic inspiration.



FRONT VIEW



OPEN DRAWER VIEW

3. MOODBOARD



NATURAL • ORGANIC • TEXTURED • WARM • ARTISANAL • FUNCTIONAL



OLIVE GREEN FOREST GREEN DEEP RED NATURAL BEIGE WARM BEIGE BRASS

4. MATERIALS & DETAILS



WOVEN STRIPE TEXTILE



PREMIUM LEATHER



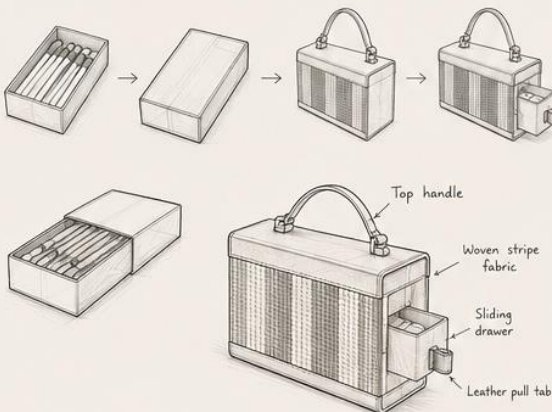
BRASS HARDWARE



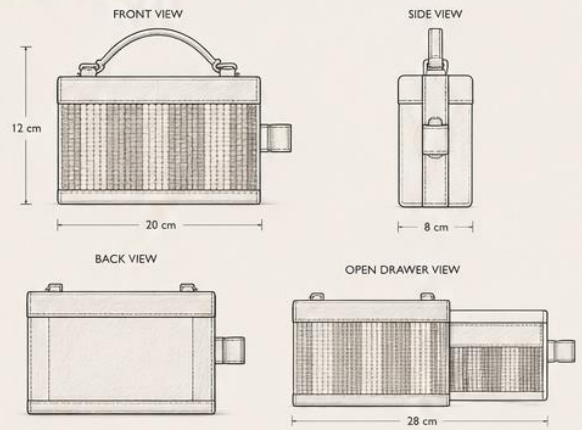
LEATHER PULL TAB

- Woven stripe textile adds texture and rhythm
- Premium leather ensures durability and structure
- Brass hardware adds a refined, timeless touch
- Sliding drawer for easy access and secure storage
- Top handle for versatile hand carry styling

5. DESIGN DEVELOPMENT



6. MEASUREMENTS



DESIGN INTENT

The Matchbox Box Bag is a blend of nostalgia and innovation. It transforms a simple, everyday object into a functional fashion piece that celebrates craftsmanship, natural inspiration and modern design.

SPECIFICATIONS

Dimensions (Closed)	20 cm (L) x 12 cm (H) x 8 cm (W)
Dimensions (Open)	28 cm (L) x 12 cm (H) x 8 cm (W)
Handle Drop	4 cm
Material	Premium Leather, Woven Stripe Textile
Hardware	Brass
Closure	Sliding Drawer
Weight (Approx.)	450 g



CARRY OPTIONS

- Top Handle
- Handheld
- Crossbody (With Strap)